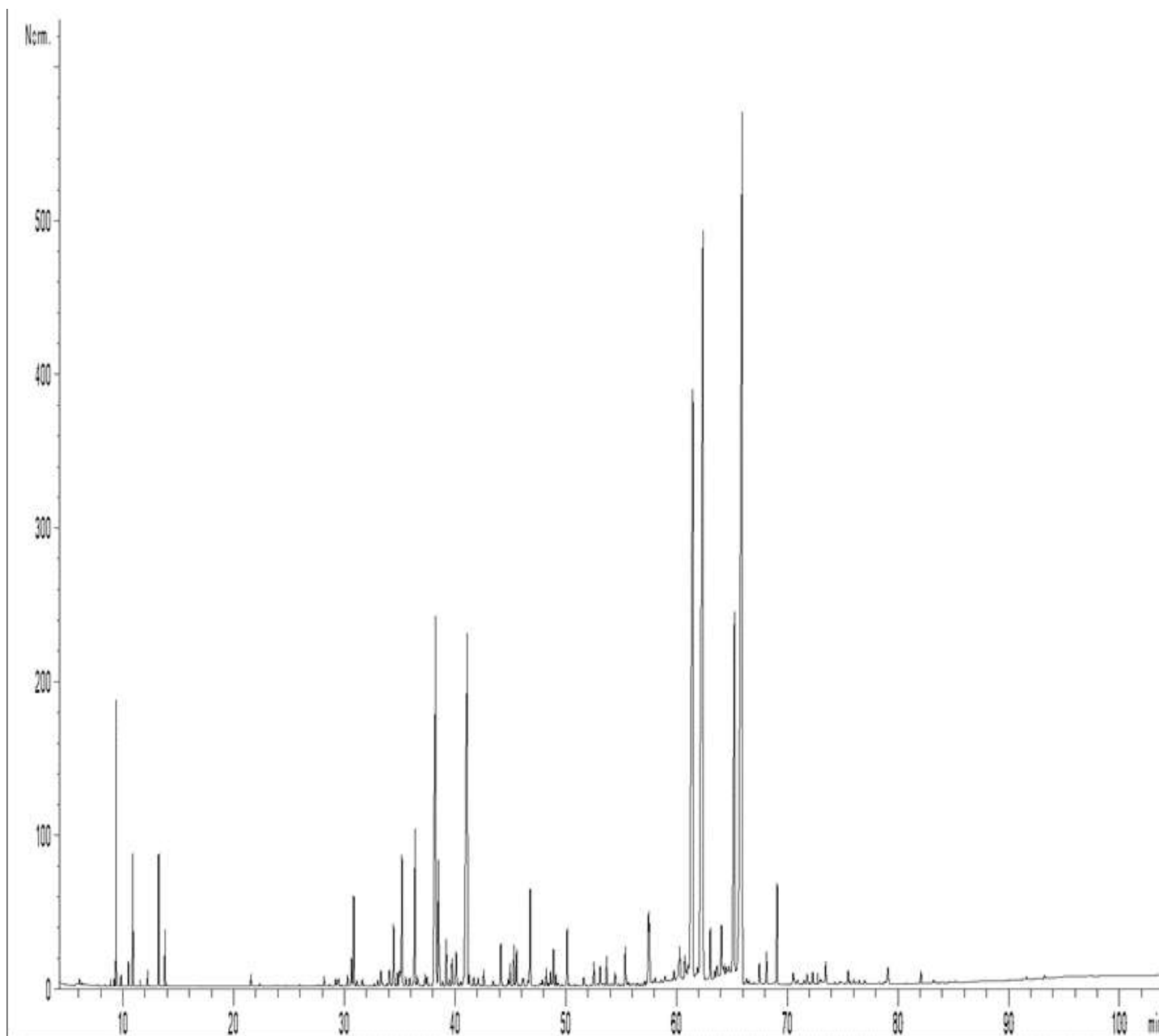


GCMS ANALYSIS

PRODUCT NAME: TURMERIC ESSENTIAL OIL - 11148

DATE: May 05, 2021



Due to volume turnover, this report is not lot specific, It is representative of the quality of this oil produced by the manufacturer of this product, Specific lots may vary slightly as is the case in natural products.

GCMS ANALYSIS (cont'd.)

PRODUCT NAME: TURMERIC ESSENTIAL OIL - 11148

Peak	RT (min)	Component name	%
1	6,06	alpha-PINENE	0,02
2	6,32	TOLUENE	0,01
3	8,89	delta3-CARENE	0,03
4	9,21	beta-MYRCENE	0,04
5	9,39	alpha-PHELLANDRENE	1,34
6	9,83	alpha-TERPINENE	0,06
7	10,50	LIMONENE	0,13
8	10,89	1,8-CINEOLE	0,76
9		beta-PHELLANDRENE	
10	12,23	gamma-TERPINENE	0,09
11	13,24	p-CYMENE	0,76
12	13,80	TERPINOLENE	0,33
13	16,32	5-HEPTENE-2-ONE, 6-METHYL-	0,01
14	21,55	alpha,p-DIMETHYLSTYRENE	0,09
15	22,35	COMPOUND Mw=152	0,02
16	28,16	1-METHYL-4-ACETYLCYCLOHEX-1-ENE	0,08
17	28,64	alpha-cis-BERGAMOTENE	0,02
18	29,21	alpha-CEDRENE	0,07
19	29,47	alpha-SANTALENE	0,11
20	30,28	alpha-trans-BERGAMOTENE	0,09
21	30,64	CURCUMENE ISOMER Mw=202	0,28
22	30,85	beta-CARYOPHYLLENE	0,81
23	31,09	TERPINENE-4-OL	0,06
24	31,61	COMPOUND Mw=178	0,06
25	32,69	COMPOUND Mw=202	0,02
26	33,03	CURCUMENE ISOMER	0,06
27	33,31	CURCUMENE ISOMER	0,14
28	33,42	SANTALENE ISOMER	0,03
29	34,06	CURCUMENE ISOMER	0,20
30	34,45	alpha-ACORADIENE	0,66

Disclaimer & Caution

Please refer to all relevant technical information specific to the product, prior to use, The information contained in this document is obtained from current and reliable sources, Essentially You Oils, provides the information contained herein, but makes no representation as to its comprehensiveness or accuracy, Individuals receiving this information must exercise their independent judgment in determining its appropriateness for a particular purpose, The user of the product is solely responsible for compliance with all laws and regulations applying to the use of the products, including intellectual property rights of third parties, As the ordinary or otherwise use(s) of this product is outside the control of Essentially You Oils, no representation or warranty, expressed or implied, is made as to the effect(s) of such use(s), (including damage or injury), or the results obtained, The liability of Essentially You Oils, is limited to the value of the goods and does not include any consequential loss, Essentially You Oils, shall not be liable for any errors or delays in the content, or for any actions taken in reliance thereon, Essentially You Oils, shall not be responsible for any damages resulting from use of or reliance upon this information, In the event of any dispute, the Customer hereby agrees that Jurisdiction is limited to the province of Ontario.

GCMS ANALYSIS (cont'd.)

PRODUCT NAME: TURMERIC ESSENTIAL OIL - 11148

Peak	RT (min)	Component name	%
31	34,78	CARVOTANACETONE	0,12
32	34,96	alpha-HUMULENE	0,13
33	35,06	E-beta-FARNESENE	0,10
34	35,19	POLYENIC SESQUITERPENE Mw=202	1,27
35	35,52	Z-beta-FARNESENE	0,10
36	35,89	CURCUMENE ISOMER	0,08
37	36,39	gamma-CURCUMENE	1,62
38	36,60	alpha-TERPINEOL	0,10
39	37,29	POLYENIC SESQUITERPENE Mw=202	0,11
40	37,45	SESQUITERPENE	0,09
41	37,69	SESQUITERPENE Mw=202	0,02
42	38,20	SESQUITERPENE Mw=202	0,50
43	38,26	alpha-ZINGIBERENE	5,36
44	38,52	beta-BISABOLENE	1,12
45	38,59	COMPOUND Mw=218	0,16
46	38,86	SESQUITERPENE Mw=202	0,05
47	39,21	beta-CURCUMENE	0,42
48	39,47	AROMATIC COMPOUND	0,07
49	39,73	SESQUITERPENE Mw=202	0,30
50	40,10	E,E-alpha-FARNESENE	0,41
51	40,30	COMPOUND Mw=200	0,02
52	40,51	p-METHYLACETOPHENONE	0,04
53	41,10	alpha-CURCUMENE	5,34
54	41,12	beta-SESQUIPELLANDRENE	1,71
55	41,28	POLYENIC SESQUITERPENE Mw=202	0,14
56	41,70	COMPOUND Mw=220	0,09
57	42,11	POLYENIC SESQUITERPENE Mw=202	0,07
58	42,59	trans-SABINOL	0,13
59	43,43	SESQUITERPENE	0,04
60	44,14	POLYENIC SESQUITERPENE Mw=202	0,37

Disclaimer & Caution

Please refer to all relevant technical information specific to the product, prior to use, The information contained in this document is obtained from current and reliable sources, Essentially You Oils, provides the information contained herein, but makes no representation as to its comprehensiveness or accuracy, Individuals receiving this information must exercise their independent judgment in determining its appropriateness for a particular purpose, The user of the product is solely responsible for compliance with all laws and regulations applying to the use of the products, including intellectual property rights of third parties, As the ordinary or otherwise use(s) of this product is outside the control of Essentially You Oils, no representation or warranty, expressed or implied, is made as to the effect(s) of such use(s), (including damage or injury), or the results obtained, The liability of Essentially You Oils, is limited to the value of the goods and does not include any consequential loss, Essentially You Oils, shall not be liable for any errors or delays in the content, or for any actions taken in reliance thereon, Essentially You Oils, shall not be responsible for any damages resulting from use of or reliance upon this information, In the event of any dispute, the Customer hereby agrees that Jurisdiction is limited to the province of Ontario.

GCMS ANALYSIS (cont'd.)

PRODUCT NAME: TURMERIC ESSENTIAL OIL - 11148

Peak	RT (min)	Component name	%
61	44,79	ALIPHATIC ALCOHOL	0,07
62	44,98	CURCUMENIC COMPOUND	0,22
63	45,31	METHOXYPHENOLIC COMPOUND Mw=178 ISOMER	0,36
64	45,57	METHOXYPHENOLIC COMPOUND Mw=178 ISOMER	0,34
65	46,09	COMPOUND Mw=218	0,06
66	46,18	beta-VETIVENE	0,07
67	46,57	AROMATIC COMPOUND	0,05
68	46,63	POLYENIC SESQUITERPENE Mw=202	0,03
69	46,79	DEHYDROCURCUMENE	0,90
70	47,73	SABINOL ISOMER	0,02
71	47,88	AROMATIC COMPOUND	0,06
72	48,04	COMPOUND Mw=248	0,03
73	48,25	ALIPHATIC ALCOHOL	0,16
74	48,41	AROMATIC COMPOUND Mw=220	0,02
75	48,62	COMPOUND Mw=152	0,12
76	48,89	COMPOUND Mw=220	0,35
77	49,11	CURCUMENOL ISOMER	0,12
78	49,32	COMPOUND Mw=220	0,04
79	50,13	METHYL PHENYL PENTANONE ISOMER Mw=176	0,54
80	51,62	beta-CALACORENE	0,08
81	52,54	AROMATIC COMPOUND Mw=200	0,25
82	53,12	CURCUMENIC COMPOUND Mw=218	0,21
83	53,69	CURCUMENIC COMPOUND Mw=218	0,29
84	54,45	AROMATIC COMPOUND	0,14
85	55,38	CURCUMENIC COMPOUND Mw=218	0,39
86	55,49	AROMATIC COMPOUND	0,06
87	55,64	NEROLIDOL	0,06
88	57,11	AROMATIC COMPOUND	0,06
89	57,30	CURCUMENIC COMPOUND Mw=218	0,05
90	57,48	CURCUMENIC COMPOUND Mw=218	0,83

Disclaimer & Caution

Please refer to all relevant technical information specific to the product, prior to use, The information contained in this document is obtained from current and reliable sources, Essentially You Oils, provides the information contained herein, but makes no representation as to its comprehensiveness or accuracy, Individuals receiving this information must exercise their independent judgment in determining its appropriateness for a particular purpose, The user of the product is solely responsible for compliance with all laws and regulations applying to the use of the products, including intellectual property rights of third parties, As the ordinary or otherwise use(s) of this product is outside the control of Essentially You Oils, no representation or warranty, expressed or implied, is made as to the effect(s) of such use(s), (including damage or injury), or the results obtained, The liability of Essentially You Oils, is limited to the value of the goods and does not include any consequential loss, Essentially You Oils, shall not be liable for any errors or delays in the content, or for any actions taken in reliance thereon, Essentially You Oils, shall not be responsible for any damages resulting from use of or reliance upon this information, In the event of any dispute, the Customer hereby agrees that Jurisdiction is limited to the province of Ontario.

GCMS ANALYSIS (cont'd.)

PRODUCT NAME: TURMERIC ESSENTIAL OIL - 11148

Peak	RT (min)	Component name	%
91	57,57	CURCUMENIC COMPOUND Mw=218	0,47
92	58,08	AROMATIC COMPOUND	0,06
93	58,97	CURCUMENIC COMPOUND Mw=218	0,06
94	59,79	AROMATIC COMPOUND	0,11
95	60,21	SESQUITERPENOL	0,19
96	60,31	CURCUMENIC COMPOUND Mw=218	0,31
97	60,77	CURCUMENIC COMPOUND Mw=218	0,28
98	60,90	TURMERONE ISOMER	0,07
99	61,06	SESQUITERPENOL	0,17
100	61,48	DIHYDRO-ar-TURMERONE	12,21
101	61,90	AROMATIC COMPOUND	0,08
102	62,39	alpha-TUMERONE Mw=218	19,47
103	63,06	AROMATIC COMPOUND Mw=234	0,46
104	63,45	CARVACROL	0,07
105	63,66	AROMATIC COMPOUND	0,16
106	64,06	AROMATIC COMPOUND Mw=234	0,60
107	64,31	TUMERONE COMPOUND Mw=216	0,13
108	64,49	COMPOUND Mw=214	0,10
109	64,72	AROMATIC COMPOUND	0,09
110	65,24	beta-TUMERONE Mw=218 (CURLONE)	5,45
111	65,62	AROMATIC COMPOUND	0,48
112	65,95	Ar-TUMERONE Mw=216	22,71
113	66,34	AROMATIC COMPOUND Mw=220	0,07
114	66,52	SESQUITERPENIC EPOXIDE	0,05
115	66,96	AROMATIC COMPOUND	0,03
116	67,49	AROMATIC COMPOUND Mw=220	0,21
117	68,13	AROMATIC COMPOUND Mw=220	0,30
118	69,11	E-alpha-ATLANTONE	1,41
119	70,54	ZINGIBERENOL	0,12
120	70,65	SESQUITERPENOL	0,06

Disclaimer & Caution

Please refer to all relevant technical information specific to the product, prior to use, The information contained in this document is obtained from current and reliable sources, Essentially You Oils, provides the information contained herein, but makes no representation as to its comprehensiveness or accuracy, Individuals receiving this information must exercise their independent judgment in determining its appropriateness for a particular purpose, The user of the product is solely responsible for compliance with all laws and regulations applying to the use of the products, including intellectual property rights of third parties, As the ordinary or otherwise use(s) of this product is outside the control of Essentially You Oils, no representation or warranty, expressed or implied, is made as to the effect(s) of such use(s), (including damage or injury), or the results obtained, The liability of Essentially You Oils, is limited to the value of the goods and does not include any consequential loss, Essentially You Oils, shall not be liable for any errors or delays in the content, or for any actions taken in reliance thereon, Essentially You Oils, shall not be responsible for any damages resulting from use of or reliance upon this information, In the event of any dispute, the Customer hereby agrees that Jurisdiction is limited to the province of Ontario.

GCMS ANALYSIS (*cont'd.*)

PRODUCT NAME: TURMERIC ESSENTIAL OIL - 11148

Peak	RT (min)	Component name	%
121	70,96	SESQUITERPENONE Mw=218	0,06
122	71,52	COMPOUND Mw=164	0,05
123	71,80	BENZOFURAN, 2,3-DEHYDRO Mw=120	0,13
124	72,31	AROMATIC COMPOUND	0,12
125	72,97	NAPHTALENIC COMPOUND Mw=230	0,06
126	73,08	AROMATIC COMPOUND	0,06
127	73,48	COMPOUND Mw=234	0,31
128	75,52	AROMATIC COMPOUND Mw=176	0,12
129	75,69	COMPOUND Mw=230	0,03
130	76,01	AROMATIC COMPOUND	0,07
131	76,51	COMPOUND Mw=232	0,04
132	77,01	AROMATIC COMPOUND	0,06
133	79,09	AROMATIC COMPOUND	0,27
134	82,07	AROMATIC COMPOUND Mw=218	0,11
135	83,21	AROMATIC COMPOUND Mw=234	0,03
136	85,21	XANTHORRHIZOL	0,02
		TOTAL	99,96

Disclaimer & Caution

Please refer to all relevant technical information specific to the product, prior to use, The information contained in this document is obtained from current and reliable sources, Essentially You Oils, provides the information contained herein, but makes no representation as to its comprehensiveness or accuracy, Individuals receiving this information must exercise their independent judgment in determining its appropriateness for a particular purpose, The user of the product is solely responsible for compliance with all laws and regulations applying to the use of the products, including intellectual property rights of third parties, As the ordinary or otherwise use(s) of this product is outside the control of Essentially You Oils, no representation or warranty, expressed or implied, is made as to the effect(s) of such use(s), (including damage or injury), or the results obtained, The liability of Essentially You Oils, is limited to the value of the goods and does not include any consequential loss, Essentially You Oils, shall not be liable for any errors or delays in the content, or for any actions taken in reliance thereon, Essentially You Oils, shall not be responsible for any damages resulting from use of or reliance upon this information, In the event of any dispute, the Customer hereby agrees that Jurisdiction is limited to the province of Ontario.