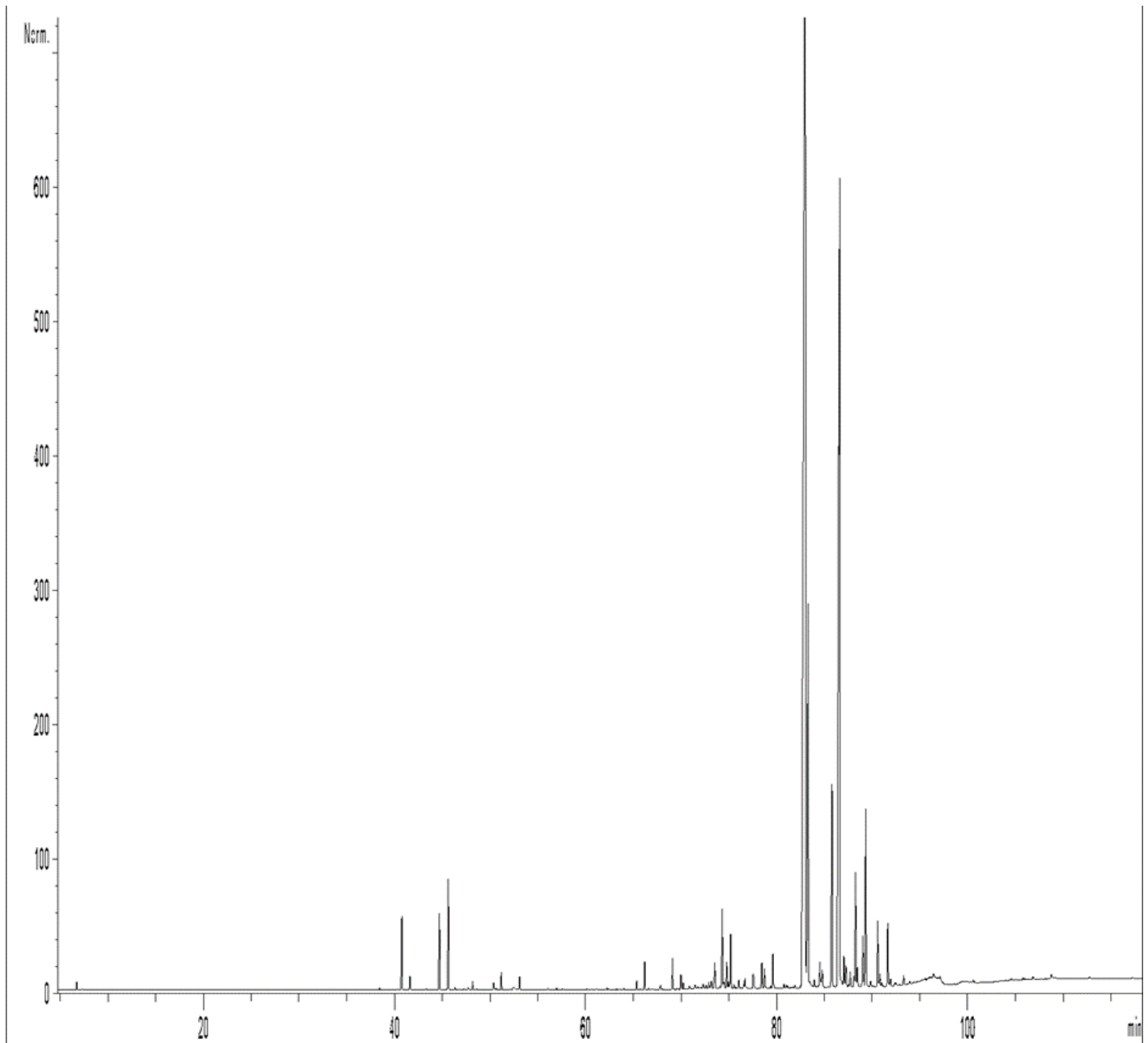


GCMS ANALYSIS

PRODUCT NAME: SANDALWOOD ESSENTIAL OIL (EAST INDIAN) - 11130

DATE: February 17, 2021



Due to volume turnover, this report is not lot specific, It is representative of the quality of this oil produced by the manufacturer of this product, Specific lots may vary slightly as is the case in natural products.

GCMS ANALYSIS (cont'd.)

PRODUCT NAME: SANDALWOOD ESSENTIAL OIL (EAST INDIAN) - 11130

Peak	RT (min)	Compound name	%
1	4,73	ACETONE	0,01
2	6,75	SANTENE	0,05
3	7,32	TRICYCLENE	0,01
4	38,44	alpha-cis-BERGAMOTENE	0,02
5	40,34	alpha-CEDRENE	0,01
6	40,78	alpha-SANTALENE	1,00
7	41,62	alpha-trans-BERGAMOTENE	0,18
8	43,29	SESQUITERPENE	0,03
9	44,71	epi-beta-SANTALENE	1,05
10	45,64	beta-SANTALENE	1,61
11	46,35	FARNESENE ISOMER	0,03
12	46,79	SANTALENE ISOMER	0,01
13	46,96	SANTALENE ISOMER	0,01
14	47,32	CURCUMENE ISOMER	0,03
15	47,73	FARNESENE ISOMER	0,04
16	48,18	gamma-CURCUMENE	0,10
17	48,59	PHOTOSANTALOL ISOMER	0,02
18	50,39	beta-BISABOLENE	0,09
19	50,43	PHOTOSANTALOL ISOMER	0,03
20	50,67	BERGAMOTENE ISOMER	0,03
21	51,19	beta-CURCUMENE	0,22
22	52,13	alpha-FARNESENE	0,01
23	52,47	BERGAMOTENE ISOMER	0,11
24	52,92	beta-SESQUIPELLANDRENE	0,02
25	53,09	alpha-CURCUMENE	0,18
26	56,08	COMPOUND Mw=147	0,02
27	56,97	PHOTOSANTALOL ISOMER	0,03
28	57,61	SESQUITERPENIC EPOXIDE	0,02
29	60,17	COMPOUND Mw=216	0,01
30	60,66	SESQUITERPENIC EPOXIDE	0,01

Disclaimer & Caution:

Please refer to all relevant technical information specific to the product, prior to use, The information contained in this document is obtained from current and reliable sources, Essentially You Oils, provides the information contained herein, but makes no representation as to its comprehensiveness or accuracy, Individuals receiving this information must exercise their independent judgment in determining its appropriateness for a particular purpose, The user of the product is solely responsible for compliance with all laws and regulations applying to the use of the products, including intellectual property rights of third parties, As the ordinary or otherwise use(s) of this product is outside the control of Essentially You Oils, no representation or warranty, expressed or implied, is made as to the effect(s) of such use(s), (including damage or injury), or the results obtained, The liability of Essentially You Oils, is limited to the value of the goods and does not include any consequential loss, Essentially You Oils, shall not be liable for any errors or delays in the content, or for any actions taken in reliance thereon, Essentially You Oils, shall not be responsible for any damages resulting from use of or reliance upon this information, In the event of any dispute, the Customer hereby agrees that Jurisdiction is limited to the province of Ontario.

GCMS ANALYSIS (cont'd.)

PRODUCT NAME: SANDALWOOD ESSENTIAL OIL (EAST INDIAN) - 11130

Peak	RT (min)	Compound name	%
31	61,14	AROMATIC COMPOUND	0,02
32	62,23	DENDROSALIN	0,03
33	62,42	COMPOUND Mw=206	0,02
34	63,26	SESQUITERPENOL	0,02
35	63,40	SESQUITERPENONE Mw=218	0,01
36	63,61	SESQUITERPENIC EPOXIDE	0,02
37	64,01	AROMATIC COMPOUND	0,02
38	65,36	SESQUITERPENOL	0,11
39	66,19	alpha-PHOTOSANTALOL A	0,35
40	66,61	BERGAMOTOL ISOMER	0,02
41	67,05	SESQUITERPENOL	0,02
42	67,86	NEROLIDOL	0,07
43	68,03	ALIPHATIC ESTER	0,01
44	69,11	alpha-PHOTOSANTALOL B	0,42
45	69,99	PHOTOSANTALOL ISOMER	0,20
46	70,23	SESQUITERPENOL	0,08
47	70,88	SESQUISABINENE HYDRATE ISOMER	0,07
48	71,50	SANTENYL COMPOUND	0,10
49	71,74	SANTENIC SESQUITERPENOL	0,04
50	71,87	SESQUITERPENOL	0,03
51	72,09	SESQUITERPENOL	0,04
52	72,32	ALIPHATIC ESTER	0,11
53	72,61	SESQUITERPENIC EPOXIDE	0,08
54	72,91	SESQUITERPENIC EPOXIDE	0,12
55	73,18	AROMATIC OXYGENED COMPOUND Mw=216	0,16
56	73,49	epi-beta-BISABOLOL	0,16
57	73,55	beta-BISABOLOL	0,34
58	74,08	SESQUITERPENOL	0,06
59	74,32	alpha-SANTALAL	1,27
60	74,51	SANTALOL ISOMER	0,14

Disclaimer & Caution:

Please refer to all relevant technical information specific to the product, prior to use, The information contained in this document is obtained from current and reliable sources, Essentially You Oils, provides the information contained herein, but makes no representation as to its comprehensiveness or accuracy, Individuals receiving this information must exercise their independent judgment in determining its appropriateness for a particular purpose, The user of the product is solely responsible for compliance with all laws and regulations applying to the use of the products, including intellectual property rights of third parties, As the ordinary or otherwise use(s) of this product is outside the control of Essentially You Oils, no representation or warranty, expressed or implied, is made as to the effect(s) of such use(s), (including damage or injury), or the results obtained, The liability of Essentially You Oils, is limited to the value of the goods and does not include any consequential loss, Essentially You Oils, shall not be liable for any errors or delays in the content, or for any actions taken in reliance thereon, Essentially You Oils, shall not be responsible for any damages resulting from use of or reliance upon this information, In the event of any dispute, the Customer hereby agrees that Jurisdiction is limited to the province of Ontario.

GCMS ANALYSIS (cont'd.)

PRODUCT NAME: SANDALWOOD ESSENTIAL OIL (EAST INDIAN) - 11130

Peak	RT (min)	Compound name	%
61	74,78	SANTALOL ISOMER	0,43
62	74,98	BERGAMOTOL ISOMER	0,11
63	75,20	AROMATIC COMPOUND Mw=216	0,81
64	75,55	BERGAMOTOL ISOMER	0,06
65	75,75	SANTALOL ISOMER	0,02
66	76,06	COMPOUND Mw=216	0,14
67	76,56	epi-alpha-BISABOLOL	0,06
68	76,69	alpha-BISABOLOL	0,17
69	77,55	COMPOUND Mw=166	0,26
70	77,61	SANTALIC COMPOUND Mw=218	0,10
71	78,45	SANTALOL ISOMER	0,43
72	78,72	SESQUITERPENOL Mw=222	0,32
73	79,39	SANTALOL ISOMER	0,04
74	79,62	DIMETHYL METHYLPENTENYL NORBORNANOL	0,51
75	79,70	SESQUIPELLANDROL ISOMER Mw=222	0,06
76	80,78	SANTALOL ISOMER	0,07
77	81,03	CURCUMENOL ISOMER	0,06
78	81,17	SESQUITERPENOL	0,04
79	81,92	BERGAMOTOL ISOMER	0,08
80	82,46	SESQUITERPENOL	0,03
81	83,00	Z-alpha-SANTALOL	44,80
82	83,30	Z-alpha-BERGAMOTOL	6,64
83	83,48	SANTALOL ISOMER	0,23
84	83,96	BERGAMOTOL ISOMER	0,22
85	84,53	SANTALOL ISOMER	0,41
86	84,58	SANTALOL ISOMER	0,11
87	84,79	BERGAMOTOL ISOMER	0,35
88	85,79	Epi-beta-SANTALOL	3,38
89	86,59	Z-beta-SANTALOL	20,35
90	87,05	SANTALOL ISOMERE	0,49

Disclaimer & Caution:

Please refer to all relevant technical information specific to the product, prior to use, The information contained in this document is obtained from current and reliable sources, Essentially You Oils, provides the information contained herein, but makes no representation as to its comprehensiveness or accuracy, Individuals receiving this information must exercise their independent judgment in determining its appropriateness for a particular purpose, The user of the product is solely responsible for compliance with all laws and regulations applying to the use of the products, including intellectual property rights of third parties, As the ordinary or otherwise use(s) of this product is outside the control of Essentially You Oils, no representation or warranty, expressed or implied, is made as to the effect(s) of such use(s), (including damage or injury), or the results obtained, The liability of Essentially You Oils, is limited to the value of the goods and does not include any consequential loss, Essentially You Oils, shall not be liable for any errors or delays in the content, or for any actions taken in reliance thereon, Essentially You Oils, shall not be responsible for any damages resulting from use of or reliance upon this information, In the event of any dispute, the Customer hereby agrees that Jurisdiction is limited to the province of Ontario.

GCMS ANALYSIS (cont'd.)

PRODUCT NAME: SANDALWOOD ESSENTIAL OIL (EAST INDIAN) - 11130

Peak	RT (min)	Compound name	%
91	87,26	SANTALOL ISOMER	0,49
92	87,72	BERGAMOTOL ISOMER	0,25
93	88,11	SANTALOL ISOMER	0,17
94	88,27	SANTALOL ISOMER	1,75
95	88,46	SANTALYL ACETATE ISOMER	0,35
96	89,04	Z-gamma-CURCUMENE-12-OL	0,94
97	89,34	LANCEOL	2,73
98	89,85	SESQUITERPENIC COMPOUND Mw=218	0,11
99	90,59	NUCIFEROL Mw=218	0,99
100	90,82	SESQUITERPENIC COMPOUND Mw=218	0,22
101	90,99	CURCUMENOL ISOMER	0,08
102	91,66	SESQUITERPENIC COMPOUND Mw=218	1,01
103	91,92	SESQUITERPENIC COMPOUND Mw=218	0,16
104	92,49	SESQUITERPENOL	0,14
105	93,30	SESQUITERPENIC COMPOUND Mw=218	0,15
106	93,96	SESQUITERPENIC EPOXIDE	0,05
107	96,45	SESQUITERPENOL	0,11
108	100,61	SESQUITERPENIC COMPOUND Mw=218	0,04
109	105,81	SANTALIC COMPOUND Mw=232	0,03
110	106,84	SESQUITERPENIC COMPOUND Mw=218	0,06
111	108,76	OXYGENED SESQUITERPENIC COMPOUND	0,14
112	112,74	OXYGENED SESQUITERPENIC COMPOUND	0,03
		TOTAL	99,91

Disclaimer & Caution:

Please refer to all relevant technical information specific to the product, prior to use, The information contained in this document is obtained from current and reliable sources, Essentially You Oils, provides the information contained herein, but makes no representation as to its comprehensiveness or accuracy, Individuals receiving this information must exercise their independent judgment in determining its appropriateness for a particular purpose, The user of the product is solely responsible for compliance with all laws and regulations applying to the use of the products, including intellectual property rights of third parties, As the ordinary or otherwise use(s) of this product is outside the control of Essentially You Oils, no representation or warranty, expressed or implied, is made as to the effect(s) of such use(s), (including damage or injury), or the results obtained, The liability of Essentially You Oils, is limited to the value of the goods and does not include any consequential loss, Essentially You Oils, shall not be liable for any errors or delays in the content, or for any actions taken in reliance thereon, Essentially You Oils, shall not be responsible for any damages resulting from use of or reliance upon this information, In the event of any dispute, the Customer hereby agrees that Jurisdiction is limited to the province of Ontario.