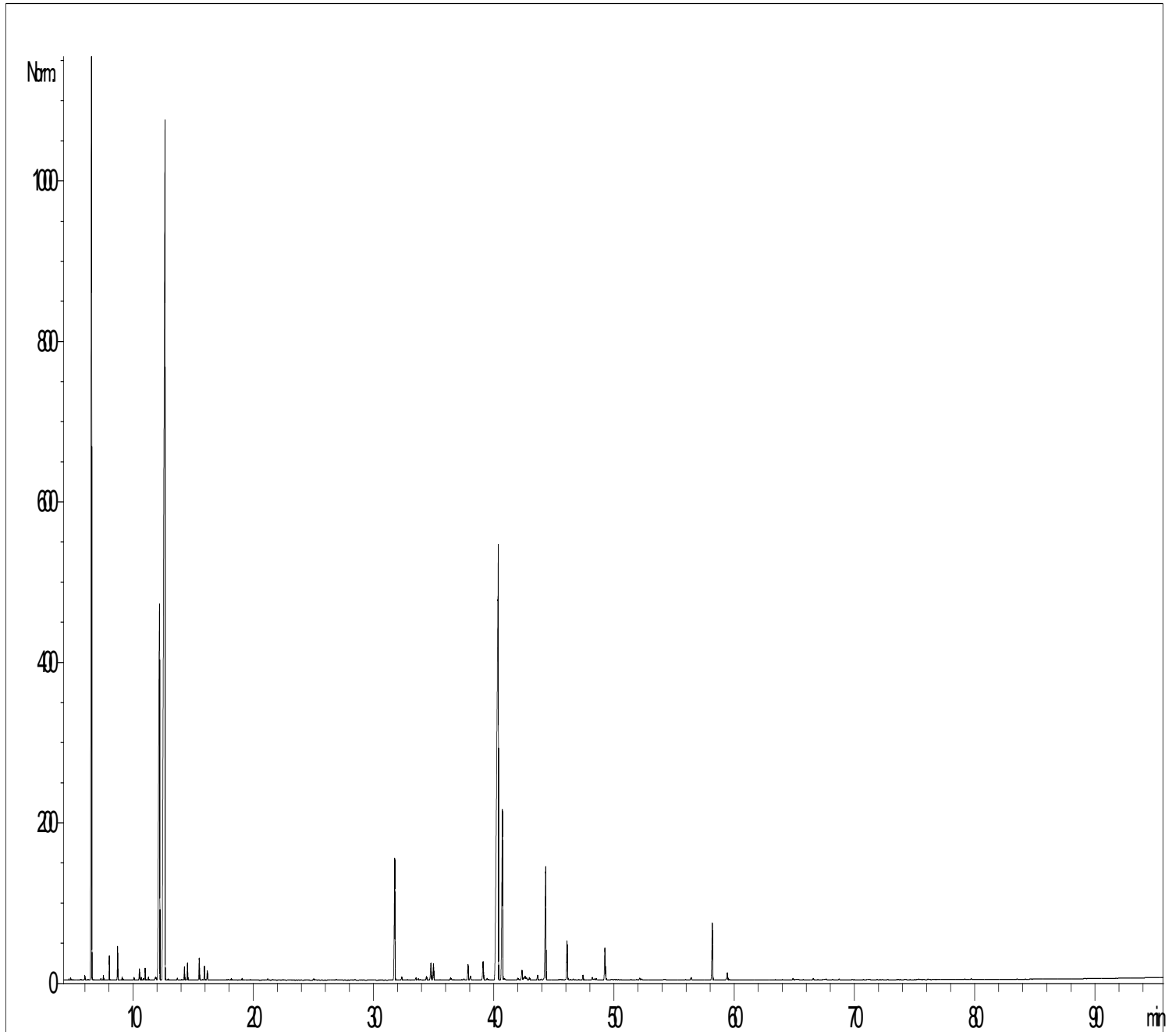


GCMS ANALYSIS

PRODUCT NAME: MYRTLE ESSENTIAL OIL - 11096

Date: May 30, 2020



*Due to volume turnover, this report is not lot specific. It is representative of the quality of this oil produced by the manufacturer of this product. Specific lots may vary slightly as is the case in natural products.*

## GCMS ANALYSIS (cont'd.)

PRODUCT NAME: MYRTLE ESSENTIAL OIL - 11096

Peak	RT (min)	Compound	%
1	4,1	ACETONE	0,03
2	4,6	2-BUTANONE	0,01
3	4,8	BUTANAL 2-METHYL	0,02
4	6,0	3-PENTANONE, 2,4-DIMETHYL	0,04
5	6,5	<b>alpha-PINENE</b>	<b>22,73</b>
6	6,6	alpha-THUYENE	0,10
7	7,3	alpha-FENCHENE	0,01
8	7,5	CAMPHENE	0,04
9	8,0	ISOBUTYL ISOBUTYRATE	0,25
10	8,7	beta-PINENE	0,39
11	9,0	SABINENE	0,04
12	9,2	PINADIENE	0,01
13	10,1	delta3-CARENE	0,03
14	10,5	beta-MYRCENE	0,15
15	10,7	alpha-PHELLANDRENE	0,04
16	10,8	psi-LIMONENE	0,02
17	11,0	ISOBUTYL 2-METHYLBUTYRATE	0,18
18	11,3	alpha-TERPINENE	0,04
19	11,9	AMYL ISOBUTYRATE	0,09
20	12,2	<b>LIMONENE</b>	<b>11,39</b>
21	12,6	<b>1,8-CINEOLE</b>	<b>29,90</b>
22	12,9	2-HEXENAL	0,02
23	13,6	Cis-beta-OCIMENE	0,03
24	14,0	Trans-ARBUSCULON	0,01
25	14,3	gamma-TERPINENE	0,19
26	14,5	Trans-beta-OCIMENE	0,25
27	15,5	p-CYMENE	0,33
28	15,8	ALIPHATIC ESTER	0,01
29	15,9	2-METHYLBUTYL 2-METHYLBUTYRATE	0,21
30	16,2	TERPINOLENE	0,14

### Disclaimer & Caution

Please refer to all relevant technical information specific to the product, prior to use, The information contained in this document is obtained from current and reliable sources, Essentially You Oils, provides the information contained herein, but makes no representation as to its comprehensiveness or accuracy, Individuals receiving this information must exercise their independent judgment in determining its appropriateness for a particular purpose, The user of the product is solely responsible for compliance with all laws and regulations applying to the use of the products, including intellectual property rights of third parties, As the ordinary or otherwise use(s) of this product is outside the control of Essentially You Oils, no representation or warranty, expressed or implied, is made as to the effect(s) of such use(s), (including damage or injury), or the results obtained, The liability of Essentially You Oils, is limited to the value of the goods and does not include any consequential loss, Essentially You Oils, shall not be liable for any errors or delays in the content, or for any actions taken in reliance thereon, Essentially You Oils, shall not be responsible for any damages resulting from use of or reliance upon this information, In the event of any dispute, the Customer hereby agrees that Jurisdiction is limited to the province of Ontario.

GCMS ANALYSIS (cont'd.)

PRODUCT NAME: MYRTLE ESSENTIAL OIL - 11096

Peak	RT (min)	Compound	%
31	18,2	PINOL	0,02
32	19,1	6-METHYL-5-HEPTEN-2-ONE	0,03
33	19,8	1-HEXANOL	0,01
34	21,2	PINENE OXIDE	0,02
35	21,6	3-HEXEN-1-OL	0,01
36	22,4	ALIPHATIC ESTER	0,02
37	25,0	alpha,p-DIMETHYLSTYRENE	0,03
38	25,1	LINALOOL Cis-OXIDE	0,02
39	25,4	LIMONENE EPOXYDE	0,01
40	26,2	ACETIC ACID	0,01
41	26,9	FENCHYL ACETATE	0,02
42	27,3	Cis-3-HEXENYL ISOVALERATE	0,02
43	28,4	alpha-COPAENE	0,02
44	29,5	CAMPHOR	0,01
<b>45</b>	<b>31,8</b>	<b>LINALOOL</b>	<b>2,37</b>
46	32,3	LINALYL ACETATE	0,06
47	32,8	ISOBUTYRIC ACID	0,02
48	33,5	ALIPHATIC ESTER	0,04
49	33,7	BORNYL ACETATE + AROMATIC COMPOUND	0,04
50	33,9	FENCHOL	0,02
51	34,4	beta-ELEMENE	0,07
52	34,7	beta-CARYOPHYLLENE	0,38
53	35,0	TERPINENE-4-OL	0,32
54	35,5	HOTRIENOL	0,01
55	36,4	MYRTENAL	0,05
56	36,5	Cis-p-2,8-MENTHADIEN-1-OL	0,02
57	36,7	Cis-beta-TERPINEOL	0,02
58	37,3	GERMACRENE A	0,02
59	37,5	PULEGONE	0,04
60	37,8	Trans-SABINYL ACETATE	0,32

Disclaimer & Caution

Please refer to all relevant technical information specific to the product, prior to use, The information contained in this document is obtained from current and reliable sources, Essentially You Oils, provides the information contained herein, but makes no representation as to its comprehensiveness or accuracy, Individuals receiving this information must exercise their independent judgment in determining its appropriateness for a particular purpose, The user of the product is solely responsible for compliance with all laws and regulations applying to the use of the products, including intellectual property rights of third parties, As the ordinary or otherwise use(s) of this product is outside the control of Essentially You Oils, no representation or warranty, expressed or implied, is made as to the effect(s) of such use(s), (including damage or injury), or the results obtained, The liability of Essentially You Oils, is limited to the value of the goods and does not include any consequential loss, Essentially You Oils, shall not be liable for any errors or delays in the content, or for any actions taken in reliance thereon, Essentially You Oils, shall not be responsible for any damages resulting from use of or reliance upon this information, In the event of any dispute, the Customer hereby agrees that Jurisdiction is limited to the province of Ontario.

## GCMS ANALYSIS (cont'd.)

PRODUCT NAME: MYRTLE ESSENTIAL OIL - 11096

Peak	RT (min)	Compound	%
61	38,0	Trans-PINOCARVEOL	0,10
62	39,0	delta-TERPINEOL	0,10
63	39,1	ESTRAGOLE	0,34
64	39,4	Trans-VERBENOL	0,04
65	39,6	gamma-SELINENE	0,02
66	40,4	<b>MYRTENYL ACETATE</b>	<b>17,86</b>
67	40,7	<b>alpha-TERPINEOL</b>	<b>3,90</b>
68	40,8	BORNEOL	0,05
69	42,0	beta-SELINENE	0,05
70	42,3	exo-2-HYDROXYCINEOL ACETATE	0,23
71	42,5	alpha-SELINENE	0,04
72	42,6	NERYL ACETATE	0,08
73	42,7	beta-BISABOLENE	0,06
74	42,9	Trans-CARVYL ACETATE	0,05
75	43,6	MYRTANYL ACETATE ISOMER	0,10
76	43,9	MYRTANYL ACETATE ISOMER	0,02
77	44,3	<b>GERANYL ACETATE</b>	<b>2,56</b>
78	46,1	MYRTENOL	0,82
79	46,6	Trans-p-MENTHA-1,8-DIEN-2-OL	0,02
80	47,1	NEROL	0,02
81	47,4	NERYL BUTYRATE	0,10
82	48,1	GERMACRENE B	0,06
83	48,3	COMPOUND Mw=152	0,03
84	48,5	Trans-CARVEOL	0,03
85	49,2	GERANIOL	0,72
86	49,8	MYRTENYL ESTER	0,02
87	50,2	Cis-CARVEOL	0,02
88	50,4	PHENYLETHYLIC ESTER	0,02
89	50,6	TERPENIC ESTER	0,02
90	51,4	MYRTENYL ESTER	0,02

### Disclaimer & Caution

Please refer to all relevant technical information specific to the product, prior to use, The information contained in this document is obtained from current and reliable sources, Essentially You Oils, provides the information contained herein, but makes no representation as to its comprehensiveness or accuracy, Individuals receiving this information must exercise their independent judgment in determining its appropriateness for a particular purpose, The user of the product is solely responsible for compliance with all laws and regulations applying to the use of the products, including intellectual property rights of third parties, As the ordinary or otherwise use(s) of this product is outside the control of Essentially You Oils, no representation or warranty, expressed or implied, is made as to the effect(s) of such use(s), (including damage or injury), or the results obtained, The liability of Essentially You Oils, is limited to the value of the goods and does not include any consequential loss, Essentially You Oils, shall not be liable for any errors or delays in the content, or for any actions taken in reliance thereon, Essentially You Oils, shall not be responsible for any damages resulting from use of or reliance upon this information, In the event of any dispute, the Customer hereby agrees that Jurisdiction is limited to the province of Ontario.

## GCMS ANALYSIS (cont'd.)

PRODUCT NAME: MYRTLE ESSENTIAL OIL - 11096

Peak	RT (min)	Compound	%
91	51,9	GERANYL BUTYRATE	0,02
92	52,1	NERYL METHYLBUTYRATE	0,04
93	52,3	TERPENIC ESTER	0,02
94	55,9	2-PHENYLETHYL VALERATE	0,02
95	56,4	CARYOPHYLLENE EPOXIDE	0,05
96	58,2	METHYLEUGENOL	1,17
97	59,3	EPOXY-6,7-HUMULENE	0,02
98	59,4	MYRTO-LACTONE A Mw=236	0,15
99	59,6	NEROLIDOL	0,01
100	64,8	MYRTO-LACTONE B Mw=250	0,04
101	65,1	FLAVESONE	0,06
102	66,6	Trans-METHYLISOEUGENOL	0,03
103	67,6	ISO-LEPTOSPERMONE	0,04
104	68,7	ELEMICINE	0,02
105	69,8	EUDESMA-7-EN-4-OL	0,01
106	76,0	AROMATIC COMPOUND	0,02
107	79,7	AROMATIC COMPOUND	0,02
		<b>TOTAL</b>	<b>99,99</b>

### Disclaimer & Caution

Please refer to all relevant technical information specific to the product, prior to use, The information contained in this document is obtained from current and reliable sources, Essentially You Oils, provides the information contained herein, but makes no representation as to its comprehensiveness or accuracy, Individuals receiving this information must exercise their independent judgment in determining its appropriateness for a particular purpose, The user of the product is solely responsible for compliance with all laws and regulations applying to the use of the products, including intellectual property rights of third parties, As the ordinary or otherwise use(s) of this product is outside the control of Essentially You Oils, no representation or warranty, expressed or implied, is made as to the effect(s) of such use(s), (including damage or injury), or the results obtained, The liability of Essentially You Oils, is limited to the value of the goods and does not include any consequential loss, Essentially You Oils, shall not be liable for any errors or delays in the content, or for any actions taken in reliance thereon, Essentially You Oils, shall not be responsible for any damages resulting from use of or reliance upon this information, In the event of any dispute, the Customer hereby agrees that Jurisdiction is limited to the province of Ontario.