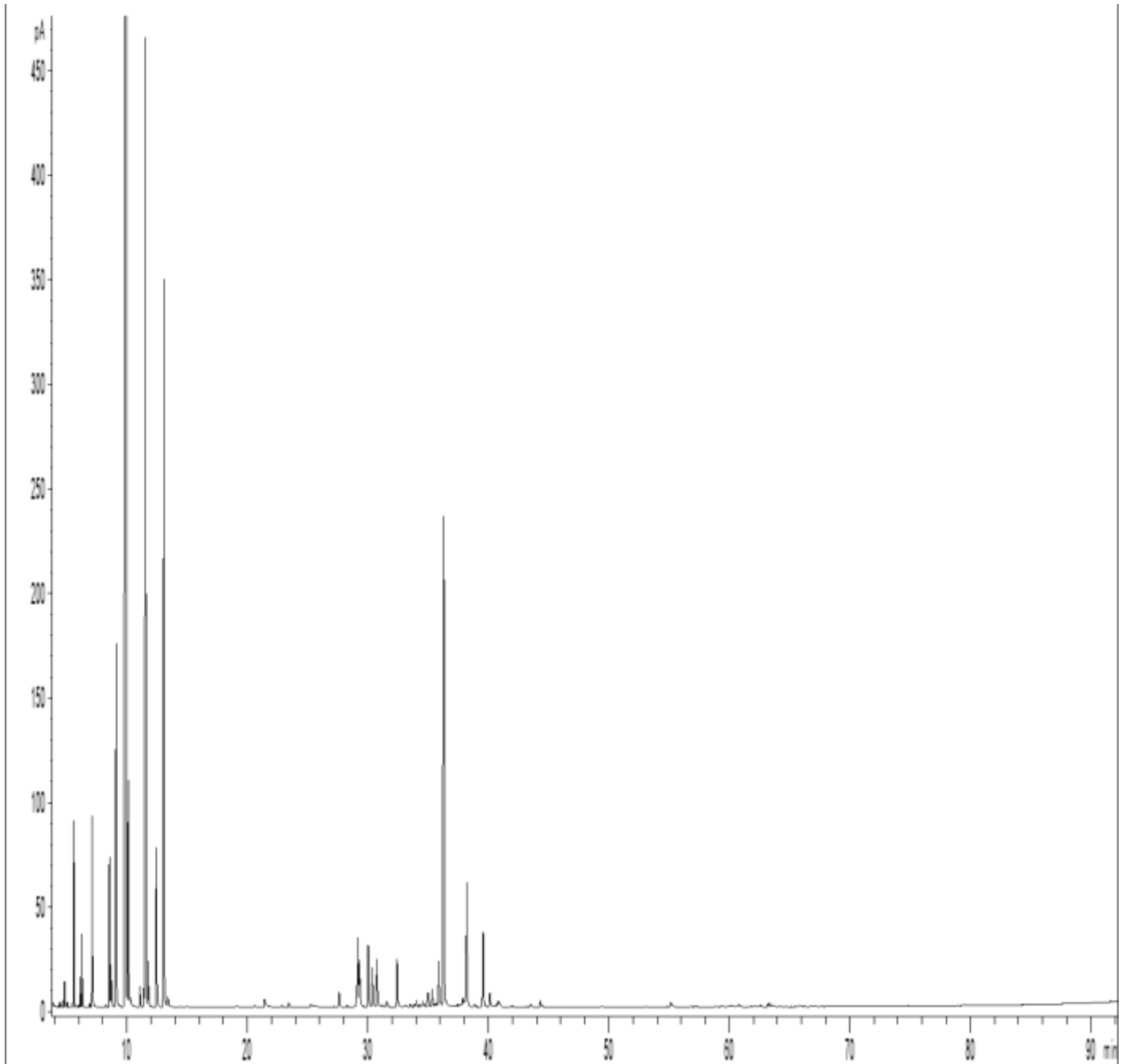


GCMS ANALYSIS

PRODUCT NAME: LIME (KEY LIME) PERU ESSENTIAL OIL - 11318
DATE: September 14, 2020



Due to volume turnover, this report is not lot specific. It is representative of the quality of this oil produced by the manufacturer of this product. Specific lots may vary slightly as is the case in natural products.

GCMS ANALYSIS (cont'd.)

PRODUCT NAME: LIME (KEY LIME) PERU ESSENTIAL OIL - 11318

Peak	RT (min)	Compound name	%
1	4,44	NONANE	0,02
2	4,73	METHYL HEXATRIENE	0,04
3	4,84	METHYL HEXATRIENE ISOMER	0,18
4	5,06	METHYL HEXATRIENE ISOMER + BORNYLENE	0,05
5	5,41	TRICYCLENE	0,02
6	5,60	alpha-PINENE	1,15
7	5,61	alpha-THUYENE	0,01
8	6,00	METHYL CYCLOHEXADIENE ISOMER	0,02
9	6,13	alpha-FENCHENE	0,21
10	6,28	CAMPHENE	0,52
11	6,92	TERPENE ISOMER	0,03
12	7,11	beta-PINENE	1,48
13	7,12	DEHYDROXYLINALOOL OXIDE A	0,30
14	-	SABINENE	Nd
15	7,43	TERPENE ISOMER	0,01
16	8,25	gamma-PYRONENE	0,02
17	8,30	TERPENE ISOMER	0,02
18	8,56	beta-MYRCENE	1,20
19	8,69	alpha-PHELLANDRENE	0,40
20	8,74	psi-LIMONENE	0,09
21	9,07	1,4-CINEOLE	1,81
22	9,11	alpha-TERPINENE	3,15
23	9,38	1,8-CINEOLE, 2,3-DEHYDRO-	0,04
24	9,94	LIMONENE	43,75
25	10,11	1,8-CINEOLE	2,07
26	10,30	beta-PHELLANDRENE	0,15
27	10,48	1,3,8-p-MENTHATRIENE	0,03
28	11,09	Cis-beta-OCIMENE	0,21
29	11,40	OCIMENE QUINTOXYDE Mw=154	0,17
30	11,56	gamma-TERPINENE	11,37

Disclaimer & Caution

Please refer to all relevant technical information specific to the product, prior to use, The information contained in this document is obtained from current and reliable sources, Essentially You Oils, provides the information contained herein, but makes no representation as to its comprehensiveness or accuracy, Individuals receiving this information must exercise their independent judgment in determining its appropriateness for a particular purpose, The user of the product is solely responsible for compliance with all laws and regulations applying to the use of the products, including intellectual property rights of third parties, As the ordinary or otherwise use(s) of this product is outside the control of Essentially You Oils, no representation or warranty, expressed or implied, is made as to the effect(s) of such use(s), (including damage or injury), or the results obtained, The liability of Essentially You Oils, is limited to the value of the goods and does not include any consequential loss, Essentially You Oils, shall not be liable for any errors or delays in the content, or for any actions taken in reliance thereon, Essentially You Oils, shall not be responsible for any damages resulting from use of or reliance upon this information, In the event of any dispute, the Customer hereby agrees that Jurisdiction is limited to the province of Ontario.

GCMS ANALYSIS (cont'd.)

PRODUCT NAME: LIME (KEY LIME) PERU ESSENTIAL OIL - 11318

Peak	RT (min)	Compound name	%
31	11,78	Trans-beta-OCIMENE	0,53
32	12,45	p-CYMENE	1,83
33	13,09	TERPINOLENE	8,41
34	13,41	TERPINOLENE ISOMER	0,19
35	13,65	OCTANAL	0,02
36	14,48	1,3,7-NONATRIENE, 4,8-DIMETHYL-	0,01
37	14,95	TRIDECANE	0,01
38	15,04	PINOL	0,01
39	19,08	MENTHATRIENIC COMPOUND	0,04
40	20,63	AROMATIC COMPOUND	0,04
41	21,44	alpha-p-DIMETHYLSTYRENE	0,23
42	21,88	4,8-TERPINOLENE EPOXIDE	0,03
43	22,86	SESQUITERPENE	0,03
44	23,45	delta-ELEMENE	0,07
45	25,26	DECANAL	0,11
46	27,19	beta-PINOCAMPHONE	0,01
47	27,62	LINALOOL	0,22
48	28,27	alpha-cis-BERGAMOTENE	0,04
49	29,15	TERPINENE-1-OL	1,01
50	29,31	FENCHOL	0,83
51	30,04	alpha-trans-BERGAMOTENE	0,90
52	30,39	beta-CARYOPHYLLENE	0,67
53	30,76	TERPINENE-4-OL	0,78
54	31,19	SESQUITERPENE	0,03
55	31,37	SESQUITERPENE	0,01
56	31,57	COMPOUND Mw=154	0,13
57	32,43	Cis-beta-TERPINEOL	0,69
58	33,18	GERMACRENE A	0,03
59	33,51	SESQUITERPENE	0,05
60	33,87	beta-SANTALENE	0,04

Disclaimer & Caution

Please refer to all relevant technical information specific to the product, prior to use, The information contained in this document is obtained from current and reliable sources, Essentially You Oils, provides the information contained herein, but makes no representation as to its comprehensiveness or accuracy, Individuals receiving this information must exercise their independent judgment in determining its appropriateness for a particular purpose, The user of the product is solely responsible for compliance with all laws and regulations applying to the use of the products, including intellectual property rights of third parties, As the ordinary or otherwise use(s) of this product is outside the control of Essentially You Oils, no representation or warranty, expressed or implied, is made as to the effect(s) of such use(s), (including damage or injury), or the results obtained, The liability of Essentially You Oils, is limited to the value of the goods and does not include any consequential loss, Essentially You Oils, shall not be liable for any errors or delays in the content, or for any actions taken in reliance thereon, Essentially You Oils, shall not be responsible for any damages resulting from use of or reliance upon this information, In the event of any dispute, the Customer hereby agrees that Jurisdiction is limited to the province of Ontario.

GCMS ANALYSIS (cont'd.)

PRODUCT NAME: LIME (KEY LIME) PERU ESSENTIAL OIL - 11318

Peak	RT (min)	Compound name	%
61	34,02	Z-OCIMENOL	0,10
62	34,33	ISOBORNEOL	0,04
63	34,58	alpha-HUMULENE	0,08
64	34,68	delta-TERPINEOL	0,04
65	35,00	gamma-SELINENE	0,31
66		E-beta-FARNESENE	
67	35,35	p-MENTH-8-EN-OL ISOMER	0,26
68	35,54	E-OCIMENOL	0,04
69	35,70	SESQUITERPENE	0,07
70	35,89	CALARENE	0,28
71	35,90	BORNEOL	0,40
72	36,06	gamma-CURCUMENE	0,06
73	36,30	alpha-TERPINEOL	6,90
74	36,61	gamma-TERPINEOL	1,18
75	36,62	GURJUNENE ISOMER	0,01
76	37,08	GERMACRENE D	0,01
77	37,36	SESQUITERPENE	0,02
78	37,50	EREMOPHILENE	0,05
79	37,71	DODECANAL	0,05
80	37,89	beta-SELINENE	0,16
81	38,00	cis-p-MENTHA-1,2-DIEN-8-OL	0,07
82	38,07	NERYL ACETATE	0,09
83	38,22	beta-BISABOLENE	1,88
84	38,84	beta-CURCUMENE	0,05
85	39,57	E,E-alpha-FARNESENE	1,10
86	40,12	delta-SELINENE	0,21
87	40,18	GERANYL ACETATE	0,07
88	40,49	1-DECANOL	0,01
89	40,68	SELINA-4,7-DIENE	0,04
90	40,82	alpha-PANASINSEN	0,09

Disclaimer & Caution

Please refer to all relevant technical information specific to the product, prior to use, The information contained in this document is obtained from current and reliable sources, Essentially You Oils, provides the information contained herein, but makes no representation as to its comprehensiveness or accuracy, Individuals receiving this information must exercise their independent judgment in determining its appropriateness for a particular purpose, The user of the product is solely responsible for compliance with all laws and regulations applying to the use of the products, including intellectual property rights of third parties, As the ordinary or otherwise use(s) of this product is outside the control of Essentially You Oils, no representation or warranty, expressed or implied, is made as to the effect(s) of such use(s), (including damage or injury), or the results obtained, The liability of Essentially You Oils, is limited to the value of the goods and does not include any consequential loss, Essentially You Oils, shall not be liable for any errors or delays in the content, or for any actions taken in reliance thereon, Essentially You Oils, shall not be responsible for any damages resulting from use of or reliance upon this information, In the event of any dispute, the Customer hereby agrees that Jurisdiction is limited to the province of Ontario.

GCMS ANALYSIS (cont'd.)

PRODUCT NAME: LIME (KEY LIME) PERU ESSENTIAL OIL - 11318

Peak	RT (min)	Compound name	%
91	40,93	trans-alpha-BISABOLENE	0,09
92	43,16	4-ETHYL-GUAIACOL	0,01
93	43,49	GERMACRENE B	0,06
94	44,33	p-CYMENE-8-OL	0,09
95	44,47	GERANIOL	0,03
96	49,42	TETRADECANAL	0,02
97	55,14	CARYOPHYLLENOL	0,08
98	55,28	JUNEOL	0,03
99	57,27	AROMATIC COMPOUND	0,02
100	58,88	SESQUITERPENOL	0,01
101	59,37	SESQUITERPENOL	0,01
102	59,86	SESQUITERPENOL	0,01
103	59,96	PENTADECANAL	0,01
104	60,13	SESQUITERPENOL	0,03
105	60,80	10-epi-gamma-EUDESMOL	0,04
106	61,75	SESQUITERPENOL	0,01
107	62,43	SESQUITERPENOL	0,01
108	62,62	SESQUITERPENOL	0,04
109	63,18	alpha-BISABOLOL	0,04
110	63,30	HIMACHALOL ISOMER	0,06
111	63,55	AROMATIC COMPOUND Mw=166	0,04
112	63,69	SESQUITERPENOL	0,02
113	65,80	NORBORNANOL DIMETHYL METHYLPENTENYL	0,03
114	79,55	AROMATIC COMPOUND	0,02
		TOTAL	100,00

Nd : Not detected (< 33 ppm)

Disclaimer & Caution

Please refer to all relevant technical information specific to the product, prior to use, The information contained in this document is obtained from current and reliable sources, Essentially You Oils, provides the information contained herein, but makes no representation as to its comprehensiveness or accuracy, Individuals receiving this information must exercise their independent judgment in determining its appropriateness for a particular purpose, The user of the product is solely responsible for compliance with all laws and regulations applying to the use of the products, including intellectual property rights of third parties, As the ordinary or otherwise use(s) of this product is outside the control of Essentially You Oils, no representation or warranty, expressed or implied, is made as to the effect(s) of such use(s), (including damage or injury), or the results obtained, The liability of Essentially You Oils, is limited to the value of the goods and does not include any consequential loss, Essentially You Oils, shall not be liable for any errors or delays in the content, or for any actions taken in reliance thereon, Essentially You Oils, shall not be responsible for any damages resulting from use of or reliance upon this information, In the event of any dispute, the Customer hereby agrees that Jurisdiction is limited to the province of Ontario.