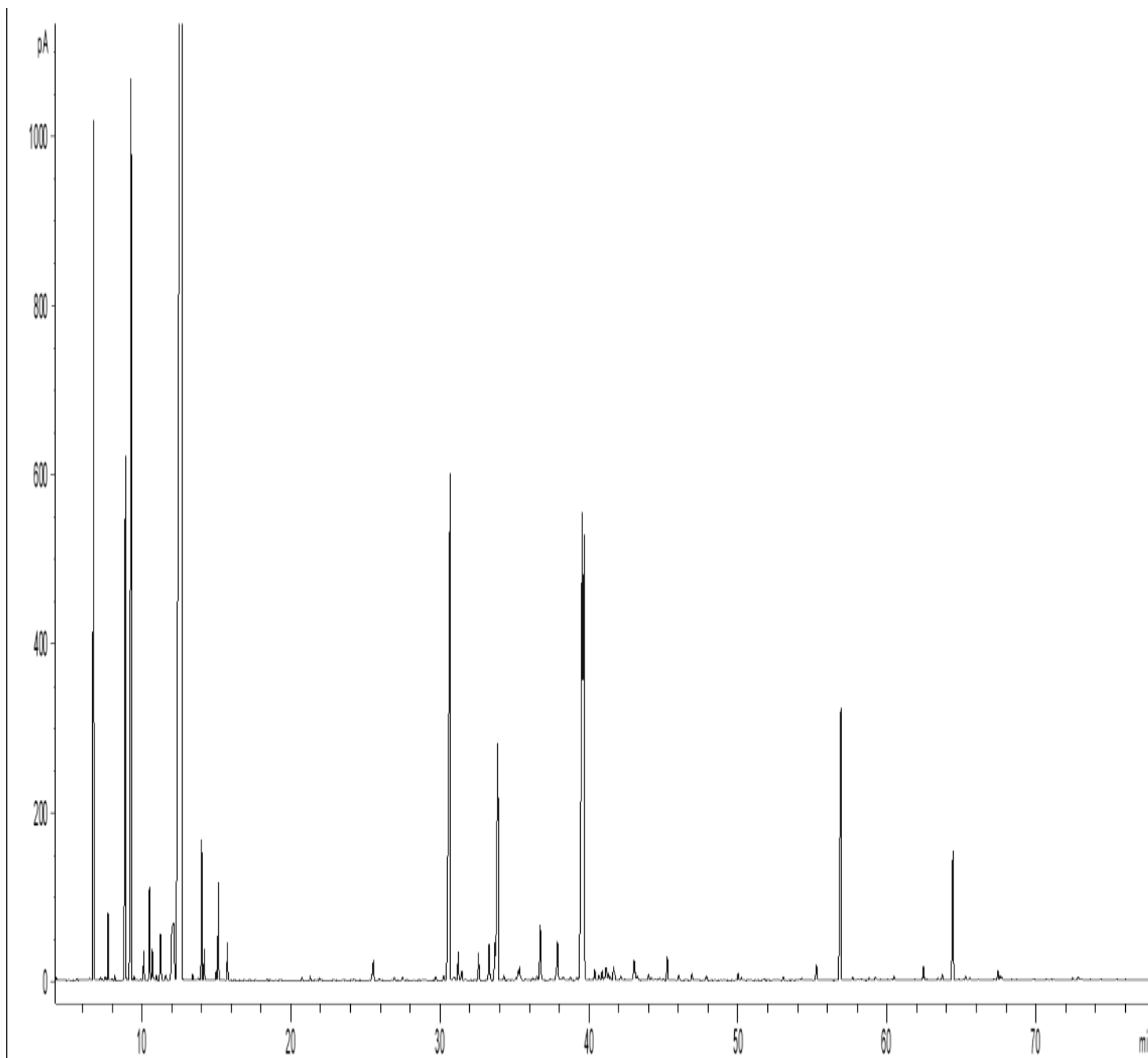


GCMS ANALYSIS

PRODUCT NAME: LAUREL LEAF ESSENTIAL OIL - 11076

DATE: December 14, 2020



*Due to volume turnover, this report is not lot specific, It is representative of the quality of this oil produced by the manufacturer of this product, Specific lots may vary slightly as is the case in natural products.*

## GCMS ANALYSIS

PRODUCT NAME: LAUREL LEAF ESSENTIAL OIL - 11076

Peak	RT (min)	Compound	%
1	6,47	TRICYCLENE	0,02
2	6,76	<b>alpha-PINENE</b>	<b>5,72</b>
3		alpha-THUYENE	
4	7,22	ALIPHATIC ESTER	0,02
5	7,32	ETHYL 2-METHYLBUTYRATE	0,01
6	7,52	PROPYL ISOBUTYRATE	0,02
7	7,59	alpha-FENCHENE	0,01
8	7,73	CAMPHENE	0,42
9	8,00	HEXANAL	0,01
10	8,18	BUTYL ISOBUTYRATE	0,03
11	8,89	<b>beta-PINENE</b>	<b>4,08</b>
12	9,27	<b>SABINENE</b>	<b>7,52</b>
13	9,47	THUYA-2,4-DIENE	0,03
14	10,12	delta3-CARENE	0,22
15	10,51	beta-MYRCENE	0,75
16	10,69	alpha-PHELLANDRENE	0,27
17	10,96	ISOBUTYL 2-METHYLBUTYRATE	0,05
18	11,24	alpha-TERPINENE	0,50
19	11,59	1,8-CINEOLE, 2,3-DEHYDRO	0,05
20	12,10	LIMONENE	1,46
21	12,70	<b>1,8-CINEOLE</b>	<b>43,23</b>
22	13,40	ALIPHATIC ESTER	0,04
23	13,79	Cis-beta-OCIMENE	0,02
24	14,01	gamma-TERPINENE	0,93
25	14,18	Trans-beta-OCIMENE	0,19
26	14,98	m-CYMENE	0,07
27	15,13	p-CYMENE	0,65
28	15,73	TERPINOLENE	0,25
29	18,39	ALIPHATIC ESTER	0,01
30	20,74	3-HEXEN-1-OL	0,03

### Disclaimer & Caution:

Please refer to all relevant technical information specific to the product, prior to use, The information contained in this document is obtained from current and reliable sources, Essentially You Oils, provides the information contained herein, but makes no representation as to its comprehensiveness or accuracy, Individuals receiving this information must exercise their independent judgment in determining its appropriateness for a particular purpose, The user of the product is solely responsible for compliance with all laws and regulations applying to the use of the products, including intellectual property rights of third parties, As the ordinary or otherwise use(s) of this product is outside the control of Essentially You Oils, no representation or warranty, expressed or implied, is made as to the effect(s) of such use(s), (including damage or injury), or the results obtained, The liability of Essentially You Oils, is limited to the value of the goods and does not include any consequential loss, Essentially You Oils, shall not be liable for any errors or delays in the content, or for any actions taken in reliance thereon, Essentially You Oils, shall not be responsible for any damages resulting from use of or reliance upon this information, In the event of any dispute, the Customer hereby agrees that Jurisdiction is limited to the province of Ontario.

## GCMS ANALYSIS

PRODUCT NAME: LAUREL LEAF ESSENTIAL OIL - 11076

Peak	RT (min)	Compound	%
31	21,29	2-NONANONE	0,03
32	21,91	TRICYCLO UNDECANOL Mw=166	0,02
33	22,87	COMPOUND Mw=152	0,01
34	24,21	alpha-p-DIMETHYLSTYRENE	0,02
35	25,45	alpha-CUBEBENE	0,05
36	25,53	Trans-THUYANOL	0,17
37	25,90	SESQUITERPENE	0,02
38	26,95	YLANGENE	0,03
39	27,49	alpha-COPAENE	0,04
40	29,72	alpha-GURJUNENE	0,04
41	30,23	beta1-CUBEBENE	0,05
42	30,68	<b>LINALOOL</b>	<b>7,54</b>
43	30,92	Cis-THUYANOL	0,03
44	30,97	2-DODECANONE	0,03
45	31,22	LINALYL ACETATE	0,22
46	31,46	Trans-p-MENTH-2-EN-1-OL	0,10
47	31,71	4-ACETYLCYCLOHEXEN-1-ENE, 1-METHYL-	0,02
48	32,59	BORNYL ACETATE	0,25
49	33,30	beta-ELEMENE	0,39
50	33,69	KETON COMPOUND Mw=170	0,05
51	33,70	beta-CARYOPHYLLENE	0,34
52	33,88	<b>TERPINENE-4-OL</b>	<b>2,77</b>
53	34,27	HOTRIENOL	0,02
54	34,28	SESQUITERPENE	0,03
55	34,64	ALIPHATIC ESTER	0,01
56	35,08	SESQUITERPENE	0,02
57	35,25	cis-p-MENTH-2-EN-1-OL	0,11
58	35,34	4-THUYEN-2-alpha-YL ACETATE	0,15
59	35,74	CADINA-3,5-DIENE	0,02
60	36,24	gamma-GURJUNENE	0,03

**Disclaimer & Caution:**

Please refer to all relevant technical information specific to the product, prior to use, The information contained in this document is obtained from current and reliable sources, Essentially You Oils, provides the information contained herein, but makes no representation as to its comprehensiveness or accuracy, Individuals receiving this information must exercise their independent judgment in determining its appropriateness for a particular purpose, The user of the product is solely responsible for compliance with all laws and regulations applying to the use of the products, including intellectual property rights of third parties, As the ordinary or otherwise use(s) of this product is outside the control of Essentially You Oils, no representation or warranty, expressed or implied, is made as to the effect(s) of such use(s), (including damage or injury), or the results obtained, The liability of Essentially You Oils, is limited to the value of the goods and does not include any consequential loss, Essentially You Oils, shall not be liable for any errors or delays in the content, or for any actions taken in reliance thereon, Essentially You Oils, shall not be responsible for any damages resulting from use of or reliance upon this information, In the event of any dispute, the Customer hereby agrees that Jurisdiction is limited to the province of Ontario.

## GCMS ANALYSIS

PRODUCT NAME: LAUREL LEAF ESSENTIAL OIL - 11076

Peak	RT (min)	Compound	%
61	36,51	SELINENE ISOMER	0,05
62	36,73	delta-TERPENYL ACETATE	0,59
63	37,43	Trans-PINOCARVEOL	0,03
64	37,88	delta-TERPINEOL	0,46
65	38,07	ESTRAGOL	0,02
66	38,16	alpha-HUMULENE	0,02
67	38,27	cis-PIPERITOL	0,04
68	38,75	LAVANDULAL	0,03
69	39,18	gamma-MUUROLENE	0,05
70	39,55	<b>TERPENYL ACETATE</b>	<b>8,52</b>
71	39,69	<b>alpha-TERPINEOL</b>	<b>3,36</b>
72	39,70	BORNEOL	0,12
73	40,39	GERMACRENE D	0,11
74	40,66	10,11-HIMACHALA-3,4-DIENE	0,07
75	40,89	Z,E-alpha-FARNESENE	0,10
76	41,04	NERYL ACETATE	0,03
77	41,16	beta-SELINENE	0,10
78	41,17	alpha-MUUROLENE	0,08
79	41,33	alpha-SELINENE	0,07
80	41,45	SESQUITERPENE	0,03
81	41,66	SESQUITERPENE	0,05
82	41,67	BICYCLOGERMACRENE	0,15
83	42,14	trans-PIPERITOL	0,06
84	42,41	SESQUITERPENE	0,02
85	43,03	delta-CADINENE	0,23
86	43,12	gamma-CADINENE	0,07
87	43,25	GERANYL ACETATE	0,05
88	44,02	alpha-BISABOLENE	0,06
89	44,19	trans-p-MENTHA-1,2-DIEN-8-OL	0,03
90	44,44	CADINA-1,4-DIENE	0,02

**Disclaimer & Caution:**

Please refer to all relevant technical information specific to the product, prior to use, The information contained in this document is obtained from current and reliable sources, Essentially You Oils, provides the information contained herein, but makes no representation as to its comprehensiveness or accuracy, Individuals receiving this information must exercise their independent judgment in determining its appropriateness for a particular purpose, The user of the product is solely responsible for compliance with all laws and regulations applying to the use of the products, including intellectual property rights of third parties, As the ordinary or otherwise use(s) of this product is outside the control of Essentially You Oils, no representation or warranty, expressed or implied, is made as to the effect(s) of such use(s), (including damage or injury), or the results obtained, The liability of Essentially You Oils, is limited to the value of the goods and does not include any consequential loss, Essentially You Oils, shall not be liable for any errors or delays in the content, or for any actions taken in reliance thereon, Essentially You Oils, shall not be responsible for any damages resulting from use of or reliance upon this information, In the event of any dispute, the Customer hereby agrees that Jurisdiction is limited to the province of Ontario.

## GCMS ANALYSIS

PRODUCT NAME: LAUREL LEAF ESSENTIAL OIL - 11076

Peak	RT (min)	Compound	%
91	44,74	SESQUITERPENE	0,03
92	45,01	MYRTENOL	0,02
93	45,26	NEROL	0,23
94	45,58	2-TRIDECANONE	0,01
95	46,04	COMPOUND Mw=202	0,06
96	46,92	ALIPHATIC ESTER	0,07
97	47,23	trans-CARVEOL	0,01
98	47,87	CALAMENENE	0,01
99	47,88	p-CYMENE-8-OL	0,01
100	47,89	GERANIOL	0,04
101	50,02	ALIPHATIC ESTER	0,07
102	50,24	SESQUITERPENIC EPOXIDE	0,03
103	51,74	alpha-CALACORENE	0,02
104	53,03	SESQUITERPENOL	0,04
105	54,29	COMPOUND Mw=190	0,03
106	55,27	CARYOPHYLLENE OXIDE	0,17
107	56,91	<b>E-METHYLEUGENOL</b>	<b>3,22</b>
108	57,70	LEDOL	0,03
109	58,24	GERMACRENE D-4-OL	0,02
110	58,35	Epi-CUBENOL	0,02
111	58,80	JUNEOL	0,03
112	59,23	CUBENOL	0,04
113	60,34	SESQUITERPENOL	0,02
114	60,48	SESQUITERPENOL	0,04
115	62,46	VIRIDIFLOROL	0,14
116	63,43	SPATHULENOL	0,03
117	63,71	CINNAMYL ACETATE	0,07
118	64,43	EUGENOL	1,26
119	64,80	SESQUITERPNOL	0,02
120	65,28	METHYLISOEUGENOL	0,04

**Disclaimer & Caution:**

Please refer to all relevant technical information specific to the product, prior to use, The information contained in this document is obtained from current and reliable sources, Essentially You Oils, provides the information contained herein, but makes no representation as to its comprehensiveness or accuracy, Individuals receiving this information must exercise their independent judgment in determining its appropriateness for a particular purpose, The user of the product is solely responsible for compliance with all laws and regulations applying to the use of the products, including intellectual property rights of third parties, As the ordinary or otherwise use(s) of this product is outside the control of Essentially You Oils, no representation or warranty, expressed or implied, is made as to the effect(s) of such use(s), (including damage or injury), or the results obtained, The liability of Essentially You Oils, is limited to the value of the goods and does not include any consequential loss, Essentially You Oils, shall not be liable for any errors or delays in the content, or for any actions taken in reliance thereon, Essentially You Oils, shall not be responsible for any damages resulting from use of or reliance upon this information, In the event of any dispute, the Customer hereby agrees that Jurisdiction is limited to the province of Ontario.

## GCMS ANALYSIS

PRODUCT NAME: LAUREL LEAF ESSENTIAL OIL - 11076

Peak	RT (min)	Compound	%
121	65,56	alpha-MUUROLOL	0,02
122	67,45	ELEMICIN	0,10
123	67,60	alpha-CADINOL	0,04
124	67,70	beta-EUDESMOL	0,04
125	70,71	SESQUITERPENIC EPOXIDE	0,02
126	71,03	SESQUITERPENOL	0,02
127	72,48	CHAVICOL	0,03
128	72,83	ISOEUGENOL	0,04
129	108,12	Trans-ELEMICIN	0,03
		<b>TOTAL</b>	<b>99,97</b>

### Disclaimer & Caution:

Please refer to all relevant technical information specific to the product, prior to use, The information contained in this document is obtained from current and reliable sources, Essentially You Oils, provides the information contained herein, but makes no representation as to its comprehensiveness or accuracy, Individuals receiving this information must exercise their independent judgment in determining its appropriateness for a particular purpose, The user of the product is solely responsible for compliance with all laws and regulations applying to the use of the products, including intellectual property rights of third parties, As the ordinary or otherwise use(s) of this product is outside the control of Essentially You Oils, no representation or warranty, expressed or implied, is made as to the effect(s) of such use(s), (including damage or injury), or the results obtained, The liability of Essentially You Oils, is limited to the value of the goods and does not include any consequential loss, Essentially You Oils, shall not be liable for any errors or delays in the content, or for any actions taken in reliance thereon, Essentially You Oils, shall not be responsible for any damages resulting from use of or reliance upon this information, In the event of any dispute, the Customer hereby agrees that Jurisdiction is limited to the province of Ontario.