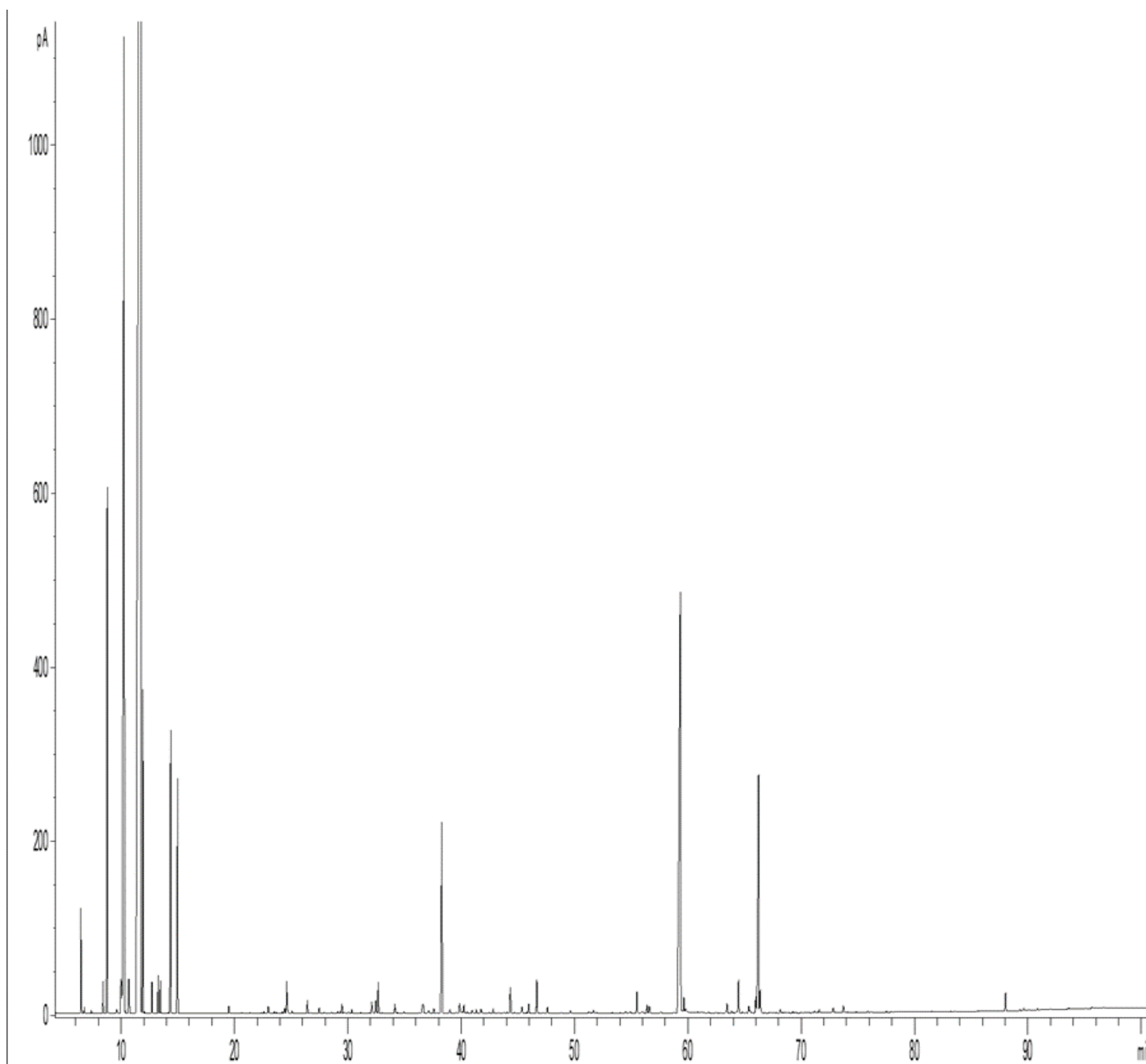


GCMS ANALYSIS

PRODUCT NAME: ELEMI ESSENTIAL OIL - 11051

DATE: February 25, 2021



Due to volume turnover, this report is not lot specific, It is representative of the quality of this oil produced by the manufacturer of this product, Specific lots may vary slightly as is the case in natural products.

GCMS ANALYSIS (cont'd.)

PRODUCT NAME: ELEMI ESSENTIAL OIL - 11051

Peak	RT (min)	Compound	%
1	6,43	alpha-PINENE	0,49
2	6,48	alpha-THUYENE	0,31
3	6,73	TOLUENE	0,03
4	7,36	CAMPHENE	0,02
5	8,40	beta-PINENE	0,22
6	8,76	SABINENE	3,60
7	9,60	delta3-CARENE	0,05
8	9,99	beta-MYRCENE	0,53
9	10,25	alpha-PHELLANDRENE	12,26
10	10,32	psi-LIMONENE	0,04
11	10,66	alpha-TERPINENE	0,41
12	11,73	LIMONENE	55,67
13	11,91	beta-PHELLANDRENE	1,94
14	12,05	COSMENE ISOMER	0,01
15	12,71	cis-beta-OCIMENE	0,19
16	13,25	gamma-TERPINENE	0,24
17	13,44	trans-beta-OCIMENE	0,22
18	14,37	p-CYMENE	2,33
19	14,98	TERPINOLENE	2,04
20	19,51	ALLO-OCIMENE	0,05
21	22,59	SESQUITERPENE	0,02
22	22,98	alpha-p-DIMETHYLSTYRENE	0,06
23	23,51	LIMONENE cis-1,2-EPOXIDE	0,02
24	24,23	LIMONENE trans-1,2-EPOXIDE	0,02
25	24,44	alpha-CUBEBENE	0,05
26	24,62	trans-THUYANOL	0,28
27	25,09	delta-ELEMENE	0,02
28	26,44	alpha-COPAENE	0,12
29	27,48	CAMPHOR	0,06
30	27,94	DILL ETHER	0,01

Disclaimer & Caution:

Please refer to all relevant technical information specific to the product, prior to use, The information contained in this document is obtained from current and reliable sources, Essentially You Oils, provides the information contained herein, but makes no representation as to its comprehensiveness or accuracy, Individuals receiving this information must exercise their independent judgment in determining its appropriateness for a particular purpose, The user of the product is solely responsible for compliance with all laws and regulations applying to the use of the products, including intellectual property rights of third parties, As the ordinary or otherwise use(s) of this product is outside the control of Essentially You Oils, no representation or warranty, expressed or implied, is made as to the effect(s) of such use(s), (including damage or injury), or the results obtained, The liability of Essentially You Oils, is limited to the value of the goods and does not include any consequential loss, Essentially You Oils, shall not be liable for any errors or delays in the content, or for any actions taken in reliance thereon, Essentially You Oils, shall not be responsible for any damages resulting from use of or reliance upon this information, In the event of any dispute, the Customer hereby agrees that Jurisdiction is limited to the province of Ontario.

GCMS ANALYSIS (cont'd.)

PRODUCT NAME: ELEMI ESSENTIAL OIL - 11051

Peak	RT (min)	Compound	%
31	28,56	beta-BOURBONENE	0,01
32	29,11	alpha-GURJUNENE	0,02
33	29,31	cis-p-MENTH-3-EN-7-AL	0,02
34	29,48	cis-p-MENTH-2-EN-1-OL	0,08
35	29,65	SESQUITERPENE	0,01
36	30,07	SESQUITERPENE	0,01
37	30,35	trans-p-MENTH-2-EN-1-OL	0,04
38	31,15	epsilon-CADINENE	0,02
39	32,12	beta-ELEMENE	0,13
40	32,48	beta-CARYOPHYLLENE	0,13
41	32,69	TERPINENE-4-OL	0,29
42	34,15	cis-p-2,8-MENTHADIEN-1-OL	0,08
43	34,16	cis-p-MENTH-2-EN-1-OL	0,02
44	34,94	GERMACRENE A	0,01
45	36,32	SESQUITERPENE	0,01
46	36,55	CRYPTONE	0,03
47	36,63	alpha-HUMULENE	0,08
48	36,64	trans-p-2,8-MENTHADIEN-1-OL	0,08
49	37,14	CARVOTANACETONE	0,04
50	37,58	LAVANDULAL	0,04
51	38,30	alpha-TERPINEOL	2,13
52	39,01	GERMACRENE D	0,04
53	39,57	alpha-MUUROLENE	0,02
54	39,86	PIPERITONE	0,14
55	40,09	BICYCLOGERMACRENE	0,02
56	40,25	CARVONE	0,09
57	40,54	cis-ISOPIPERITENOL	0,01
58	40,97	trans-PIPERITOL	0,03
59	41,34	trans-ISOPIPERITENOL	0,04
60	41,75	delta-CADINENE	0,04

Disclaimer & Caution:

Please refer to all relevant technical information specific to the product, prior to use, The information contained in this document is obtained from current and reliable sources, Essentially You Oils, provides the information contained herein, but makes no representation as to its comprehensiveness or accuracy, Individuals receiving this information must exercise their independent judgment in determining its appropriateness for a particular purpose, The user of the product is solely responsible for compliance with all laws and regulations applying to the use of the products, including intellectual property rights of third parties, As the ordinary or otherwise use(s) of this product is outside the control of Essentially You Oils, no representation or warranty, expressed or implied, is made as to the effect(s) of such use(s), (including damage or injury), or the results obtained, The liability of Essentially You Oils, is limited to the value of the goods and does not include any consequential loss, Essentially You Oils, shall not be liable for any errors or delays in the content, or for any actions taken in reliance thereon, Essentially You Oils, shall not be responsible for any damages resulting from use of or reliance upon this information, In the event of any dispute, the Customer hereby agrees that Jurisdiction is limited to the province of Ontario.

GCMS ANALYSIS (cont'd.)

PRODUCT NAME: ELEMI ESSENTIAL OIL - 11051

Peak	RT (min)	Compound	%
61	41,83	gamma-CADINENE	0,01
62	42,83	COMPOUND Mw=140	0,04
63	43,78	SESQUITERPENE	0,02
64	44,35	trans-SABINOL	0,26
65	45,37	AROMATIC COMPOUND	0,08
66	45,96	trans-CARVEOL	0,09
67	46,68	p-CYMENE-8-OL	0,33
68	47,61	cis-CARVEOL	0,06
69	49,64	SESQUITERPENOL	0,02
70	51,25	SESQUITERPENOL	0,02
71	51,48	SESQUITERPENOL	0,01
72	51,67	alpha-PHELLANDRENE DIMER ISOMER	0,03
73	51,92	CUBEBOL	0,01
74	54,51	LIMONENE-10-OL	0,02
75	54,85	PERILLYL ALCOHOL	0,01
76	54,95	alpha-PHELLANDRENE DIMER ISOMER	0,01
77	55,50	METHYLEUGENOL	0,21
78	55,96	SESQUITERPENOL	0,04
79	56,40	SESQUITERPENOL	0,09
80	56,60	SESQUITERPENIC EPOXIDE	0,08
81	57,63	ELEMOL ISOMER	0,02
82	58,79	p-CRESOL	0,01
83	59,33	CYCLOOCTANONE	0,05
84	59,34	ELEMOL	8,64
85	59,64	GUAJOL	0,16
86	59,80	CYCLOHEXANEMETHANOL, 4-HYDROXY-alpha-alpha-4-TRIMETHYL-	0,07
87	63,45	gamma-EUDESOL	0,10
88	63,84	AGAROSPIROL	0,02
89	64,29	alpha-MUUROLOL	0,01
90	64,46	2-ACETYLCYCLOPENTANONE	0,34

Disclaimer & Caution:

Please refer to all relevant technical information specific to the product, prior to use, The information contained in this document is obtained from current and reliable sources, Essentially You Oils, provides the information contained herein, but makes no representation as to its comprehensiveness or accuracy, Individuals receiving this information must exercise their independent judgment in determining its appropriateness for a particular purpose, The user of the product is solely responsible for compliance with all laws and regulations applying to the use of the products, including intellectual property rights of third parties, As the ordinary or otherwise use(s) of this product is outside the control of Essentially You Oils, no representation or warranty, expressed or implied, is made as to the effect(s) of such use(s), (including damage or injury), or the results obtained, The liability of Essentially You Oils, is limited to the value of the goods and does not include any consequential loss, Essentially You Oils, shall not be liable for any errors or delays in the content, or for any actions taken in reliance thereon, Essentially You Oils, shall not be responsible for any damages resulting from use of or reliance upon this information, In the event of any dispute, the Customer hereby agrees that Jurisdiction is limited to the province of Ontario.

GCMS ANALYSIS (cont'd.)

PRODUCT NAME: ELEMI ESSENTIAL OIL - 11051

Peak	RT (min)	Compound	%
91	65,37	CARVACROL	0,07
92	65,48	BULNESOL	0,03
93	65,99	alpha-EUDESOL	0,17
94	66,23	ELEMICIN	3,01
95	66,37	beta-EUDESOL	0,28
96	68,16	trans-LIMONENE-1,2-DIOL	0,03
97	71,20	KETONE COMPOUND	0,02
98	71,60	SESQUITERPENIC EPOXIDE	0,03
99	72,85	COMPOUND Mw=168	0,06
100	73,72	SESQUITERPENIC EPOXIDE	0,08
101	75,88	COMPOUND Mw=168	0,02
102	77,52	EUDESOL ISOMER	0,02
103	88,03	EUDESOL ISOMER	0,20
104	89,64	SESQUITERPENIC EPOXIDE	0,03
105	90,86	SESQUITERPENIC EPOXIDE	0,02
106	93,64	SESQUITERPENIC EPOXIDE	0,02
107	95,68	SESQUITERPENIC EPOXIDE	0,02
		TOTAL	100,00

Disclaimer & Caution:

Please refer to all relevant technical information specific to the product, prior to use, The information contained in this document is obtained from current and reliable sources, Essentially You Oils, provides the information contained herein, but makes no representation as to its comprehensiveness or accuracy, Individuals receiving this information must exercise their independent judgment in determining its appropriateness for a particular purpose, The user of the product is solely responsible for compliance with all laws and regulations applying to the use of the products, including intellectual property rights of third parties, As the ordinary or otherwise use(s) of this product is outside the control of Essentially You Oils, no representation or warranty, expressed or implied, is made as to the effect(s) of such use(s), (including damage or injury), or the results obtained, The liability of Essentially You Oils, is limited to the value of the goods and does not include any consequential loss, Essentially You Oils, shall not be liable for any errors or delays in the content, or for any actions taken in reliance thereon, Essentially You Oils, shall not be responsible for any damages resulting from use of or reliance upon this information, In the event of any dispute, the Customer hereby agrees that Jurisdiction is limited to the province of Ontario.