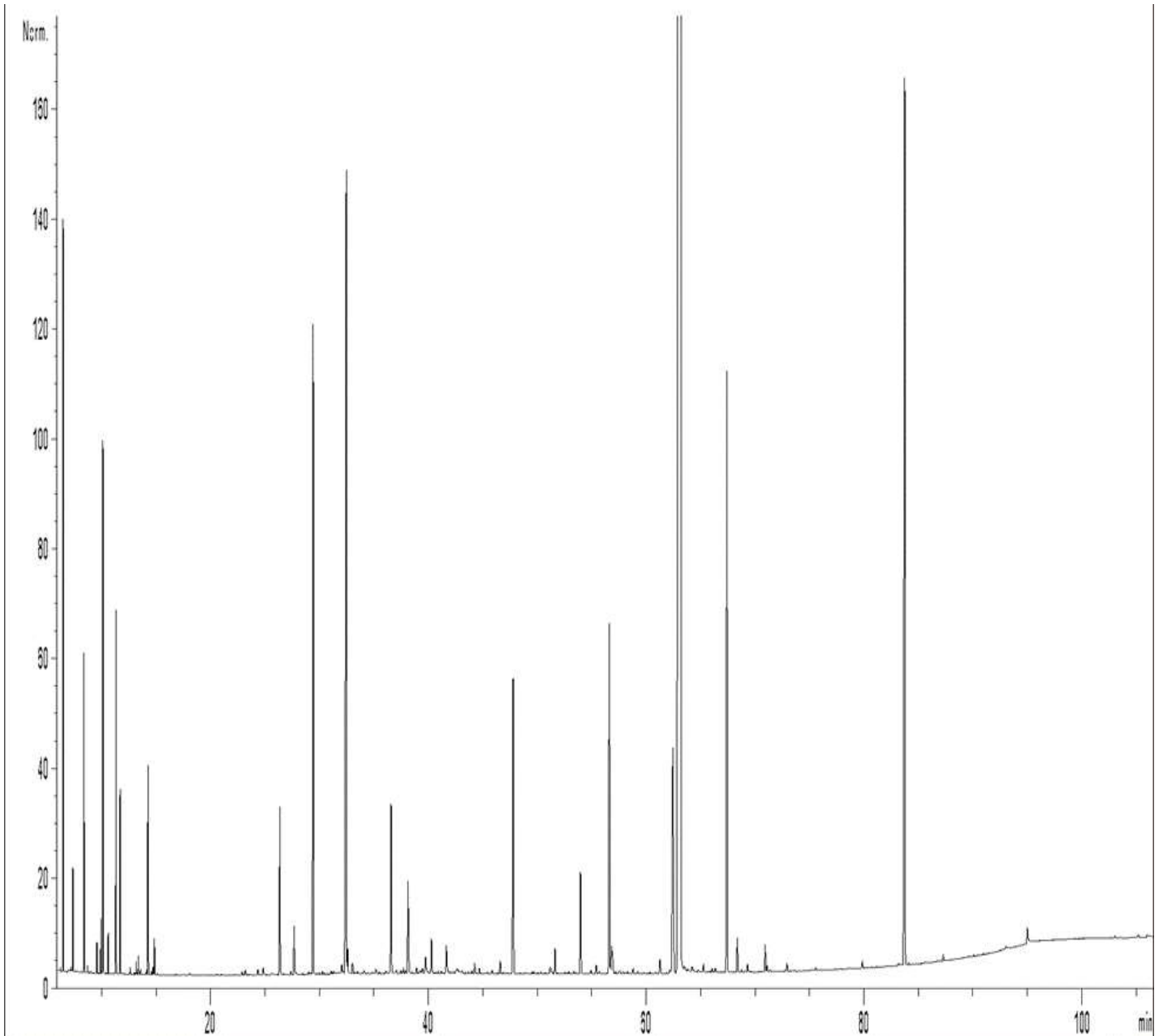


GCMS ANALYSIS

PRODUCT NAME: CINNAMON LEAF ESSENTIAL OIL - 11034

DATE: March 04, 2021



Due to volume turnover, this report is not lot specific, It is representative of the quality of this oil produced by the manufacturer of this product, Specific lots may vary slightly as is the case in natural products.

GCMS ANALYSIS (cont'd.)

PRODUCT NAME: CINNAMON LEAF ESSENTIAL OIL - 11034

Peak	RT (min)	Compound	%
1	6,45	alpha-PINENE	0,89
2	6,49	alpha-THUYENE	0,05
3	7,16	alpha-FENCHENE	0,01
4	7,36	CAMPHENE	0,15
5	8,38	beta-PINENE	0,50
6	8,71	SABINENE	0,01
7	9,55	delta3-CARENE	0,05
8	9,91	beta-MYRCENE	0,09
9	10,09	alpha-PHELLANDRENE	0,94
10	10,58	alpha-TERPINENE	0,07
11	11,30	LIMONENE	0,69
12	11,69	1,8-CINEOLE	0,37
13		beta-PHELLANDRENE	
14	12,62	cis-beta-OCIMENE	0,01
15	13,17	gamma-TERPINENE	0,03
16	13,36	trans-beta-OCIMENE	0,04
17	13,56	STYRENE	0,01
18	14,11	m-CYMENE	0,01
19	14,24	p-CYMENE	0,46
20	14,56	ISOTERPINOLENE	0,01
21	14,72	2-METHYLBUTYL 2-METHYLBUTYRATE	0,02
22	14,83	TERPINOLENE	0,08
23	22,91	alpha,p-DIMETHYLSTYRENE	0,01
24	23,21	LINALOOL cis-OXIDE	0,01
25	24,35	alpha-CUBEBENE	0,01
26	24,85	LINALOOL trans-OXIDE	0,02
27	26,37	alpha-COPAENE	0,52
28	27,39	beta-BOURBONENE	0,01
29	27,68	BENZALDEHYDE	0,17
30	29,02	beta1-CUBEBENE	0,01

Disclaimer & Caution

Please refer to all relevant technical information specific to the product, prior to use, The information contained in this document is obtained from current and reliable sources, Essentially You Oils, provides the information contained herein, but makes no representation as to its comprehensiveness or accuracy, Individuals receiving this information must exercise their independent judgment in determining its appropriateness for a particular purpose, The user of the product is solely responsible for compliance with all laws and regulations applying to the use of the products, including intellectual property rights of third parties, As the ordinary or otherwise use(s) of this product is outside the control of Essentially You Oils, no representation or warranty, expressed or implied, is made as to the effect(s) of such use(s), (including damage or injury), or the results obtained, The liability of Essentially You Oils, is limited to the value of the goods and does not include any consequential loss, Essentially You Oils, shall not be liable for any errors or delays in the content, or for any actions taken in reliance thereon, Essentially You Oils, shall not be responsible for any damages resulting from use of or reliance upon this information, In the event of any dispute, the Customer hereby agrees that Jurisdiction is limited to the province of Ontario.

GCMS ANALYSIS (cont'd.)

PRODUCT NAME: CINNAMON LEAF ESSENTIAL OIL - 11034

Peak	RT (min)	Compound	%
31	29,43	LINALOOL	1,95
32	30,28	trans-p-MENTH-2-EN-1-OL	0,01
33	31,10	ISOCARYOPHYLLENE	0,01
34	32,06	beta-ELEMENE	0,03
35	32,47	beta-CARYOPHYLLENE	3,30
36	32,59	TERPINENE-4-OL	0,08
37	33,00	AROMADENDRENE	0,03
38	33,03	HOTRIENOL	0,02
39	34,08	cis-p-MENTH-2-EN-1-OL	0,01
40	35,18	ALLO-AROMADENDRENE	0,02
41	36,08	ZONARENE	0,02
42	36,58	alpha-HUMULENE	0,59
43	37,05	CARVOTANACETONE	0,02
44	37,48	LAVANDULAL	0,01
45	37,72	gamma-MUUROLENE	0,02
46	37,90	LEDENE	0,01
47	38,14	alpha-TERPINEOL	0,30
48	38,21	BORNEOL	0,03
49	38,89	GERMACRENE D	0,02
50	39,21	beta-SELINENE	0,03
51	39,44	alpha-SELINENE	0,03
52	39,73	BENZYL ACETATE	0,06
53	39,79	alpha-MUUROLENE	0,03
54	40,28	BICYCLOGERMACRENE	0,12
55	41,65	delta-CADINENE	0,09
56	41,69	gamma-CADINENE	0,03
57	42,61	BENZENEPROPANAL	0,06
58	43,07	CADINA-1,4-DIENE	0,02
59	43,98	NEROL	0,01
60	44,25	trans-SABINOL	0,04

Disclaimer & Caution

Please refer to all relevant technical information specific to the product, prior to use, The information contained in this document is obtained from current and reliable sources, Essentially You Oils, provides the information contained herein, but makes no representation as to its comprehensiveness or accuracy, Individuals receiving this information must exercise their independent judgment in determining its appropriateness for a particular purpose, The user of the product is solely responsible for compliance with all laws and regulations applying to the use of the products, including intellectual property rights of third parties, As the ordinary or otherwise use(s) of this product is outside the control of Essentially You Oils, no representation or warranty, expressed or implied, is made as to the effect(s) of such use(s), (including damage or injury), or the results obtained, The liability of Essentially You Oils, is limited to the value of the goods and does not include any consequential loss, Essentially You Oils, shall not be liable for any errors or delays in the content, or for any actions taken in reliance thereon, Essentially You Oils, shall not be responsible for any damages resulting from use of or reliance upon this information, In the event of any dispute, the Customer hereby agrees that Jurisdiction is limited to the province of Ontario.

GCMS ANALYSIS (cont'd.)

PRODUCT NAME: CINNAMON LEAF ESSENTIAL OIL - 11034

Peak	RT (min)	Compound	%
61	44,68	2-PHENYLETHYL ACETATE	0,02
62	45,85	CALAMENENE	0,01
63	46,50	p-CYMENE-8-OL	0,03
64	46,59	GERANIOL	0,02
65	47,70	SAFROLE	0,93
66	47,78	BENZYL ALCOHOL	0,05
67	51,19	TETRADECANAL	0,05
68	51,62	BENZENE PROPANOL ACETATE	0,08
69	53,97	CARYOPHYLLENE OXIDE	0,38
70	54,93	SESQUITERPENIC EPOXIDE	0,01
71	55,41	METHYLEUGENOL	0,03
72	56,61	E-CINNAMALDEHYDE	1,28
73	56,82	3-PHENYLPROPANOL	0,10
74	56,87	epoxy-6,7-HUMULENE	0,06
75	57,58	CUBENOL	0,01
76	58,80	GLOBULOL	0,02
77	61,26	SPATHULENOL	0,06
78	62,16	PENTADECANONE TRIMETHYL	0,02
79	62,45	CINNAMYL ACETATE	1,30
80	63,17	EUGENOL	77,22
81	63,51	T-CADINOL	0,02
82	64,23	alpha-MUUROLOL	0,03
83	65,26	CARVACROL	0,03
84	66,05	ISOSPATHULENOL	0,01
85	66,35	alpha-CADINOL	0,02
86	67,42	EUGENYL ACETATE	2,08
87	68,37	CINNAMIC ALCOHOL	0,13
88	69,31	CARYOPHYLLA-2,6-DIEN-5-alpha-OL	0,03
89	70,92	CHAVICOL	0,09
90	71,11	SESQUITERPENIC EPOXIDE	0,02

Disclaimer & Caution

Please refer to all relevant technical information specific to the product, prior to use, The information contained in this document is obtained from current and reliable sources, Essentially You Oils, provides the information contained herein, but makes no representation as to its comprehensiveness or accuracy, Individuals receiving this information must exercise their independent judgment in determining its appropriateness for a particular purpose, The user of the product is solely responsible for compliance with all laws and regulations applying to the use of the products, including intellectual property rights of third parties, As the ordinary or otherwise use(s) of this product is outside the control of Essentially You Oils, no representation or warranty, expressed or implied, is made as to the effect(s) of such use(s), (including damage or injury), or the results obtained, The liability of Essentially You Oils, is limited to the value of the goods and does not include any consequential loss, Essentially You Oils, shall not be liable for any errors or delays in the content, or for any actions taken in reliance thereon, Essentially You Oils, shall not be responsible for any damages resulting from use of or reliance upon this information, In the event of any dispute, the Customer hereby agrees that Jurisdiction is limited to the province of Ontario.

GCMS ANALYSIS (cont'd.)

PRODUCT NAME: CINNAMON LEAF ESSENTIAL OIL - 11034

Peak	RT (min)	Compound	%
91	72,92	SESQUITERPENIC EPOXIDE	0,03
92	75,58	CINNAMALDEHYDE, 2-METHOXY-	0,02
93	79,86	EUGENOL, METHOXY-	0,02
94	83,20	alpha-PHELLANDRENE DIMER ISOMER	0,01
95	83,74	BENZYL BENZOATE	3,45
96	87,29	2-PHENYLETHYL BENZOATE	0,02
97	95,02	PALMITIC ACID	0,06
		TOTAL	100,00

Disclaimer & Caution

Please refer to all relevant technical information specific to the product, prior to use, The information contained in this document is obtained from current and reliable sources, Essentially You Oils, provides the information contained herein, but makes no representation as to its comprehensiveness or accuracy, Individuals receiving this information must exercise their independent judgment in determining its appropriateness for a particular purpose, The user of the product is solely responsible for compliance with all laws and regulations applying to the use of the products, including intellectual property rights of third parties, As the ordinary or otherwise use(s) of this product is outside the control of Essentially You Oils, no representation or warranty, expressed or implied, is made as to the effect(s) of such use(s), (including damage or injury), or the results obtained, The liability of Essentially You Oils, is limited to the value of the goods and does not include any consequential loss, Essentially You Oils, shall not be liable for any errors or delays in the content, or for any actions taken in reliance thereon, Essentially You Oils, shall not be responsible for any damages resulting from use of or reliance upon this information, In the event of any dispute, the Customer hereby agrees that Jurisdiction is limited to the province of Ontario.