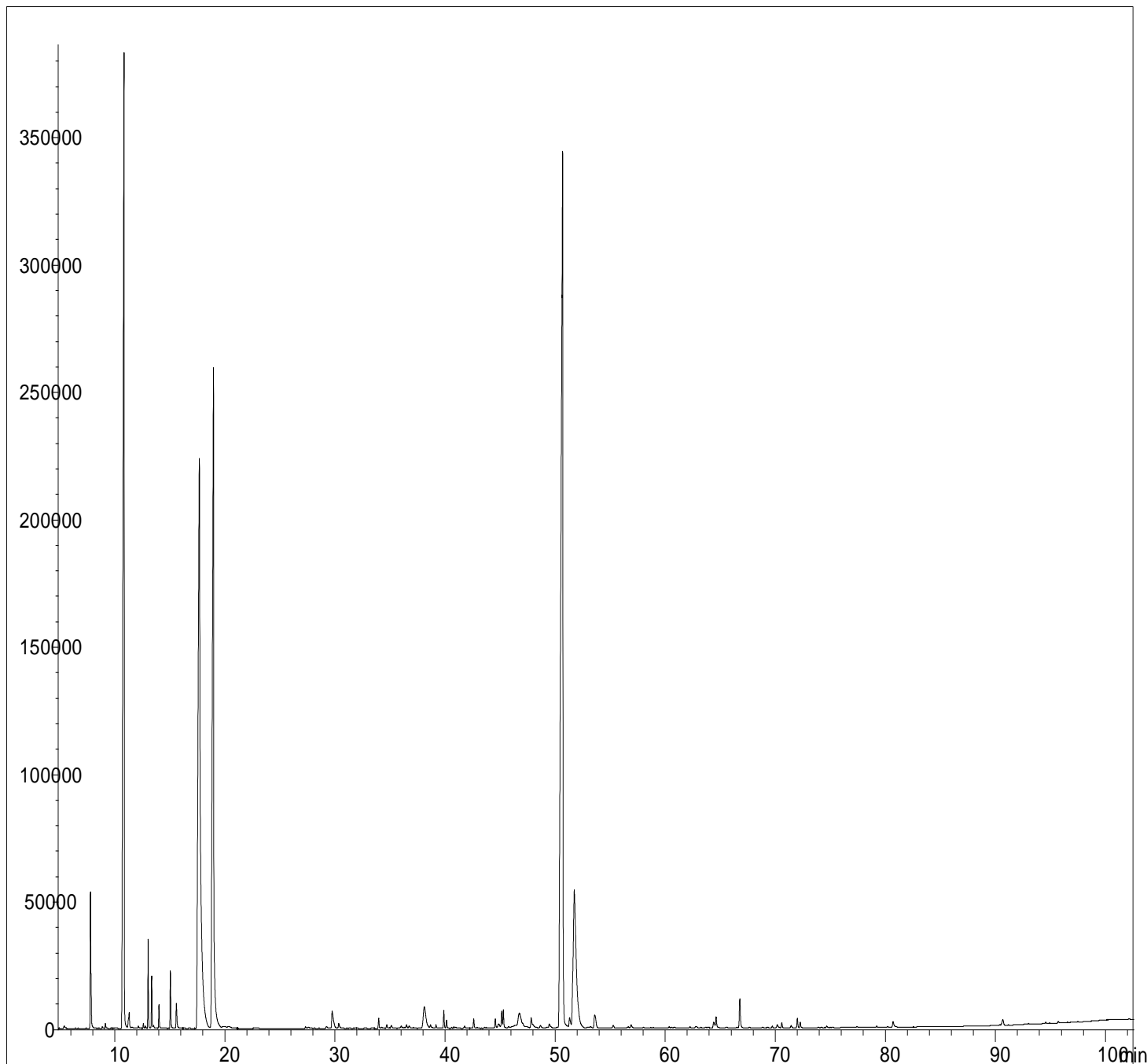


GCMS ANALYSIS

PRODUCT NAME: CUMIN ESSENTIAL OIL - 11044

DATE: April 10, 2017



*Due to volume turnover, this report is not lot specific. It is representative of the quality of this oil produced by the manufacturer of this product. Specific lots may vary slightly as is the case in natural products.*

### GCMS ANALYSIS (cont'd.)

PRODUCT NAME: CUMIN ESSENTIAL OIL - 11044

Peak	RT (min)	COMPONENT name	%
1	5,4	2-METHYLBUTANAL + ETHANOL	0,05
2	7,7	<b>α-PINENE</b>	<b>1,09</b>
3	7,9	α-THUYENE	0,34
4	7,9	CYCLOHEXANE METHYLETHYLIDENE ISO, Mw=124	0,04
5	8,2	TOLUENE	0,01
6	8,9	α-FENCHENE	0,02
7	9,2	CAMPHENE	0,06
8	10,1	DIMETHYL OCTADIENE ISOMER	0,01
9	10,8	<b>β-PINENE</b>	<b>17,57</b>
10	11,2	ISOAMYL ACETATE	0,13
11	11,3	SABINENE	0,16
12	11,5	PINADIENE	0,02
13	11,6	THUYADIENE	0,02
14	12,1	p-MENTH-2-ENE	0,03
15	12,6	Δ3-CARENE	0,05
16	12,8	COMPONENT Mw=122	0,02
17	13,0	<b>β-MYRCENE</b>	<b>0,77</b>
18	13,4	<b>α-PHELLANDRENE</b>	<b>0,48</b>
19	13,4	ψ-LIMONENE	0,01
20	13,5	METHYL ETHYL BENZENE ISOMER	0,05
21	14,0	α-TERPINENE	0,23
22	14,3	2-HEXENAL	0,01
23	14,5	2,3-DEHYDRO-1,8-CINEOLE	0,01
24	15,1	LIMONENE	0,59
25	15,6	β-PHELLANDRENE + 1,8-CINEOLE	0,37
26	16,4	FURAN, 2-PENTYL-	0,01
27	16,8	Cis-β-OCIMENE	0,01
28	17,7	<b>γ-TERPINENE</b>	<b>20,49</b>
29	19,0	<b>p-CYMENE</b>	<b>14,96</b>
30	19,9	ISOTERPINOLENE	0,11
31	20,4	TERPINOLENE	0,11

#### Disclaimer & Caution

Please refer to all relevant technical information specific to the product, prior to use, The information contained in this document is obtained from current and reliable sources, Essentially You Oils, provides the information contained herein, but makes no representation as to its comprehensiveness or accuracy, Individuals receiving this information must exercise their independent judgment in determining its appropriateness for a particular purpose, The user of the product is solely responsible for compliance with all laws and regulations applying to the use of the products, including intellectual property rights of third parties, As the ordinary or otherwise use(s) of this product is outside the control of Essentially You Oils, no representation or warranty, expressed or implied, is made as to the effect(s) of such use(s), (including damage or injury), or the results obtained, The liability of Essentially You Oils, is limited to the value of the goods and does not include any consequential loss, Essentially You Oils, shall not be liable for any errors or delays in the content, or for any actions taken in reliance thereon, Essentially You Oils, shall not be responsible for any damages resulting from use of or reliance upon this information, In the event of any dispute, the Customer hereby agrees that Jurisdiction is limited to the province of Ontario.

## GCMS ANALYSIS (cont'd.)

PRODUCT NAME: CUMIN ESSENTIAL OIL - 11044

Peak	RT (min)	COMPONENT name	%
32	27,3	MENTHATRIENE ISOMER	0,03
33	29,2	MENTHATRIENE ISOMER	0,05
34	29,8	$\alpha$ ,p-DIMETHYLSTYRENE	0,47
35	30,4	MENTHATRIENE ISOMER	0,10
36	30,7	ACETIC ACID	0,01
37	31,3	$\alpha$ -CUBEBENE + Trans-THUYANOL	0,02
38	32,7	AROMATIC COMPONENT	0,01
39	34,0	DAUCENE	0,13
40	34,3	$\alpha$ -COPAENE	0,02
41	34,7	ALIPHATIC ALCOHOL	0,06
42	35,1	TERPENIC KETONE ISOMER Mw=152	0,05
43	36,0	LINALOOL	0,05
44	36,2	IONONE COMPONENT	0,02
45	36,3	SESQUITERPENE	0,02
46	36,5	LINALYL ACETATE + $\beta$ 1-CUBEBENE	0,06
47	36,7	Cis-p-MENTH-3-EN-7-AL	0,06
48	37,3	Trans-p-MENTH-2-EN-1-OL	0,01
49	37,7	4-CARANONE	0,02
50	38,1	p-MENTH-3-EN-7-AL	0,88
51	38,4	FENCHOL	0,04
52	38,7	TERPENIC KETONE	0,08
53	39,1	$\alpha$ ,trans-BERGAMOTENE	0,04
54	39,9	TERPINENE-4-OL	0,22
55	40,1	$\beta$ -CARYOPHYLLENE	0,11
56	40,6	SESQUITERPENE	0,01
57	40,8	Cis-DIHYDROCARVONE	0,02
58	41,0	$\beta$ -CEDRENE	0,02
59	41,2	Cis-p-MENTH-2-EN-1-OL	0,01
60	41,8	MYRTENAL	0,04
61	42,0	SABINACETONE	0,02
62	42,6	THUYENYL ACETATE ISOMER + trans-PINOCARVEOL	0,13

### Disclaimer & Caution

Please refer to all relevant technical information specific to the product, prior to use, The information contained in this document is obtained from current and reliable sources, Essentially You Oils, provides the information contained herein, but makes no representation as to its comprehensiveness or accuracy, Individuals receiving this information must exercise their independent judgment in determining its appropriateness for a particular purpose, The user of the product is solely responsible for compliance with all laws and regulations applying to the use of the products, including intellectual property rights of third parties, As the ordinary or otherwise use(s) of this product is outside the control of Essentially You Oils, no representation or warranty, expressed or implied, is made as to the effect(s) of such use(s), (including damage or injury), or the results obtained, The liability of Essentially You Oils, is limited to the value of the goods and does not include any consequential loss, Essentially You Oils, shall not be liable for any errors or delays in the content, or for any actions taken in reliance thereon, Essentially You Oils, shall not be responsible for any damages resulting from use of or reliance upon this information, In the event of any dispute, the Customer hereby agrees that Jurisdiction is limited to the province of Ontario.

## GCMS ANALYSIS (cont'd.)

PRODUCT NAME: CUMIN ESSENTIAL OIL - 11044

Peak	RT (min)	COMPONENT name	%
63	43,6	ZONARENE	0,02
64	43,8	AROMATIC COMPONENT	0,01
65	44,6	E- $\beta$ -FARNESENE	0,13
66	44,9	NERAL + CRYPTONE	0,12
67	45,2	CARVOTANACETONE	0,24
68	45,3	$\alpha$ -TERPINEOL	0,23
69	46,3	BORNEOL	0,14
70	46,8	DAUCENE ISOMER	0,75
71	47,0	SESQUITERPENE	0,12
72	47,2	CARVENONE	0,08
73	50,5	SESQUITERPENE	0,01
74	47,8	PELLANDRAL	0,21
75	48,0	SESQUITERPENE + CARVONE	0,11
76	48,7	$\alpha$ -FARNESENE	0,07
77	49,3	$\delta$ -CADINENE	0,04
78	49,5	TIGLIC ACID	0,12
79	50,7	<b>CUMINAL</b>	<b>26,90</b>
80	51,3	MYRTENOL	0,25
81	51,7	<b>p-MENTH-1,3-DIEN-7-AL</b>	<b>6,70</b>
82	51,8	<b>p-MENTH-1,4-DIEN-7-AL</b>	
83	52,4	SABINOL ISOMER + $\beta$ -DAMASCENONE	0,06
84	52,9	Trans-ANETHOLE	0,04
85	53,2	Trans-CARVEOL	0,05
86	53,6	p-CYMENE-8-OL	0,39
87	55,3	TERPENIC ESTER	0,06
88	56,6	TERPENIC ESTER	0,04
89	56,9	SABINOL ISOMER	0,08
90	58,0	HYDROXYETHYL ISOBUTYL BENZENE Mw=178	0,02
91	60,4	$\alpha$ -PELLANDRENE- $\Delta$ -5,6-DIMERE	0,02
92	62,3	PERILLIC ALCOHOL	0,02
93	62,8	CARYOPHYLLENE EPOXIDE + COMPONENT Mw=150	0,04

### Disclaimer & Caution

Please refer to all relevant technical information specific to the product, prior to use, The information contained in this document is obtained from current and reliable sources, Essentially You Oils, provides the information contained herein, but makes no representation as to its comprehensiveness or accuracy, Individuals receiving this information must exercise their independent judgment in determining its appropriateness for a particular purpose, The user of the product is solely responsible for compliance with all laws and regulations applying to the use of the products, including intellectual property rights of third parties, As the ordinary or otherwise use(s) of this product is outside the control of Essentially You Oils, no representation or warranty, expressed or implied, is made as to the effect(s) of such use(s), (including damage or injury), or the results obtained, The liability of Essentially You Oils, is limited to the value of the goods and does not include any consequential loss, Essentially You Oils, shall not be liable for any errors or delays in the content, or for any actions taken in reliance thereon, Essentially You Oils, shall not be responsible for any damages resulting from use of or reliance upon this information, In the event of any dispute, the Customer hereby agrees that Jurisdiction is limited to the province of Ontario.

## GCMS ANALYSIS (cont'd.)

PRODUCT NAME: CUMIN ESSENTIAL OIL - 11044

Peak	RT (min)	COMPONENT name	%
94	64,4	p-MENTHA-1,4-DIEN-7-OL	0,14
95	64,6	CAROTOL	0,17
96	65,6	CEDRENE OXIDE	0,02
97	66,5	CAPRYLIC ACID	0,02
98	66,8	CUMINOL	0,50
99	67,7	AROMATIC COMPONENT Mw=234	0,01
100	69,3	SPATHULENOL	0,01
101	69,7	ISOTHYMOL	0,02
102	70,2	PENTADECANONE TRIMETHYL	0,05
103	70,6	THYMOL	0,06
104	71,4	ISOCARVACROL	0,04
105	72,0	CARVACROL	0,13
106	72,3	4(1-METHYLETHYL) PHENOL	0,07
107	74,7	EUDESMOL ISOMER	0,03
108	77,4	DAUCOL	0,02
109	79,2	DILLAPIOL	0,03
110	80,7	AROMATIC COMPONENT Mw=168	0,14
111	90,7	TERPENIC COMPONENT	0,13
112	93,0	AROMATIC COMPONENT	0,05
113	94,6	TERPENIC COMPONENT	0,02
114	95,7	AROMATIC COMPONENT	0,03
115	97,5	AROMATIC COMPONENT	0,01
116	102,1	AROMATIC COMPONENT	0,02
		<b>TOTAL</b>	<b>99,43</b>

### Disclaimer & Caution

Please refer to all relevant technical information specific to the product, prior to use, The information contained in this document is obtained from current and reliable sources, Essentially You Oils, provides the information contained herein, but makes no representation as to its comprehensiveness or accuracy, Individuals receiving this information must exercise their independent judgment in determining its appropriateness for a particular purpose, The user of the product is solely responsible for compliance with all laws and regulations applying to the use of the products, including intellectual property rights of third parties, As the ordinary or otherwise use(s) of this product is outside the control of Essentially You Oils, no representation or warranty, expressed or implied, is made as to the effect(s) of such use(s), (including damage or injury), or the results obtained, The liability of Essentially You Oils, is limited to the value of the goods and does not include any consequential loss, Essentially You Oils, shall not be liable for any errors or delays in the content, or for any actions taken in reliance thereon, Essentially You Oils, shall not be responsible for any damages resulting from use of or reliance upon this information, In the event of any dispute, the Customer hereby agrees that Jurisdiction is limited to the province of Ontario.