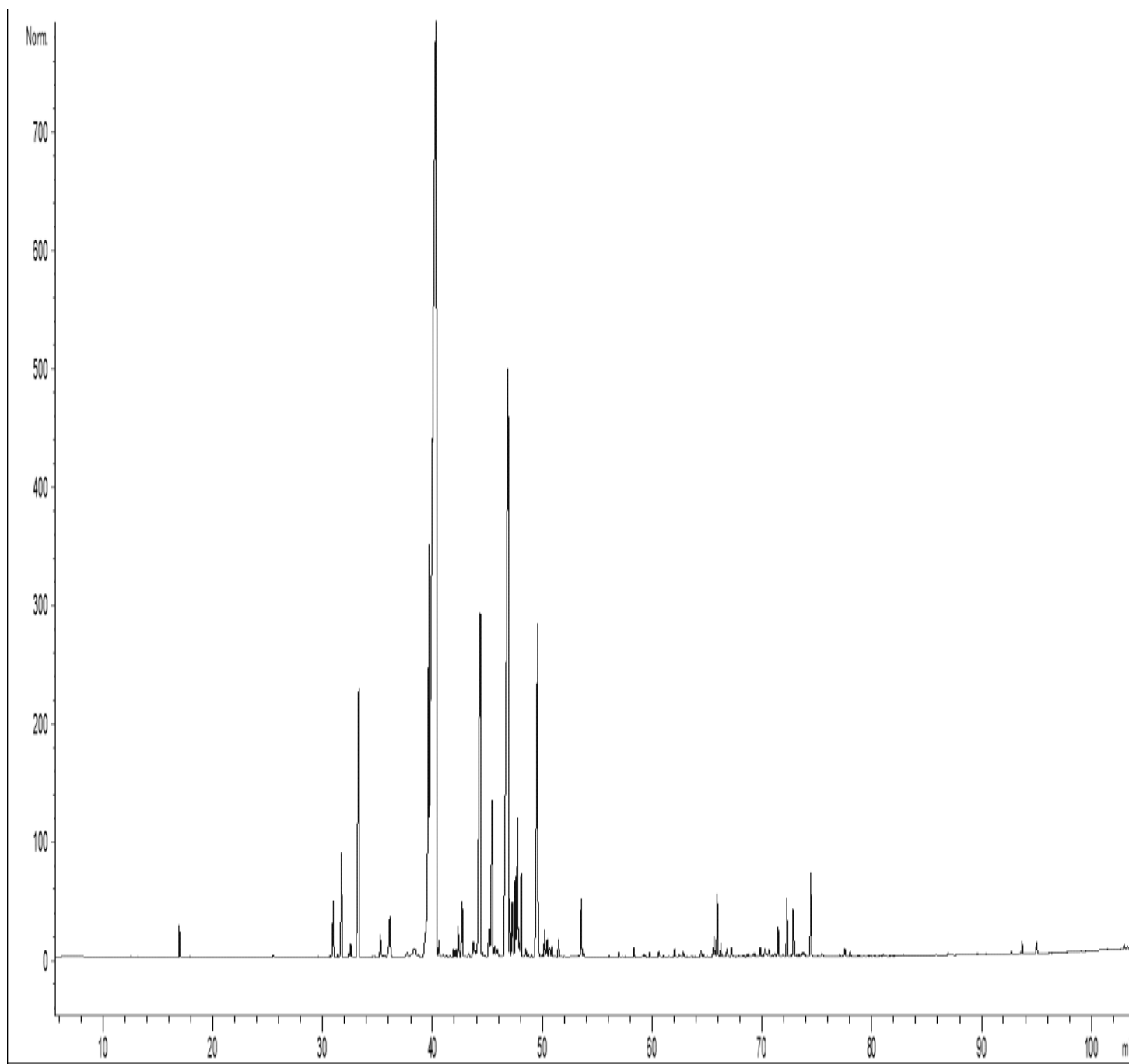


GCMS ANALYSIS

PRODUCT NAME: COPAIBA BALSAM ESSENTIAL OIL - 11041

DATE: December 18, 2020



It is representative of the quality of this oil produced by the manufacturer of this product, Specific lots may vary slightly as is the case in natural products.

GCMS ANALYSIS (cont'd.)

PRODUCT NAME: COPAIBA BALSAM ESSENTIAL OIL - 11041

Peak	RT (min)	Compound	%
1	12,58	p-MENTH-2-ENE	0,01
2	16,96	cis-beta-OCIMENE	0,24
3	17,94	trans-beta-OCIMENE	0,01
4	25,52	ALLO-OCIMENE ISOMER	0,03
5	29,66	SESQUITERPENE	0,01
6	30,68	SESQUITERPENE	0,02
7	30,97	alpha-CUBEBENE	0,59
8	31,39	ELEMENE ISOMER	0,04
9	31,73	delta-ELEMENE	1,07
10	32,39	BICYCLOELEMENE	0,05
11	32,57	YLANGENE	0,15
12	33,31	alpha-COPAENE	3,95
13	34,71	SESQUITERPENE	0,02
14	35,28	CYPERENE	0,27
15	35,48	alpha-GURJUNENE	0,04
16	35,67	SESQUITERPENE	0,02
17	36,12	beta1-CUBEBENE	0,64
18	37,71	COMPOUND Mw=206	0,13
19	38,17	alpha-CEDRENE	0,09
20	38,27	epsilon-CADINENE	0,30
21	38,56	SESQUITERPENE	0,08
22	39,68	alpha-trans-BERGAMOTENE + beta-ELEMENE	4,34
23	40,34	beta-CARYOPHYLLENE	45,19
24	40,57	AROMADENDRENE	0,13
25	40,94	SESQUITERPENE	0,05
26	41,21	SESQUITERPENE	0,02
27	41,33	SESQUITERPENE	0,02
28	41,59	SESQUITERPENE	0,02
29	41,91	SESQUITERPENE	0,08
30	42,08	CADINA-3,5-DIENE	0,08

Disclaimer & Caution:

Please refer to all relevant technical information specific to the product, prior to use. The information contained in this document is obtained from current and reliable sources, Essentially You Oils, provides the information contained herein, but makes no representation as to its comprehensiveness or accuracy. Individuals receiving this information must exercise their independent judgment in determining its appropriateness for a particular purpose. The user of the product is solely responsible for compliance with all laws and regulations applying to the use of the products, including intellectual property rights of third parties. As the ordinary or otherwise use(s) of this product is outside the control of Essentially You Oils, no representation or warranty, expressed or implied, is made as to the effect(s) of such use(s), (including damage or injury), or the results obtained. The liability of Essentially You Oils, is limited to the value of the goods and does not include any consequential loss. Essentially You Oils, shall not be liable for any errors or delays in the content, or for any actions taken in reliance thereon. Essentially You Oils, shall not be responsible for any damages resulting from use of or reliance upon this information. In the event of any dispute, the Customer hereby agrees that Jurisdiction is limited to the province of Ontario.

GCMS ANALYSIS (cont'd.)

PRODUCT NAME: COPAIBA BALSAM ESSENTIAL OIL - 11041

Peak	RT (min)	Compound	%
31	42,32	GERMACRENE A	0,40
32	42,70	ALLO-AROMADENDRENE + E-beta-FARNESENE	0,66
33	43,30	FARNESENE ISOMER	0,06
34	43,71	ZONARENE	0,23
35	43,89	SESQUITERPENE	0,10
36	44,34	alpha-HUMULENE	6,07
37	44,56	cis-4,5-MUUROLADIENE	0,06
38	44,69	gamma-SELINENE	0,02
39	45,16	Z-beta-FARNESENE	0,52
40	45,43	gamma-MUUROLENE	2,41
41	45,64	gamma-CURCUMENE	0,17
42	45,86	LEDENE	0,15
43	46,89	GERMACRENE D	14,31
44	47,02	MUUROLADIENE ISOMER	0,61
45	47,25	beta-SELINENE + EREMOPHILENE	0,70
46	47,52	alpha-SELINENE	0,32
47	47,54	alpha-MUUROLENE	0,67
48	47,74	E,E-alpha-FARNESENE	1,52
49	47,82	HIMACHALENE ISOMER	0,26
50	48,07	BICYCLOGERMACRENE	0,86
51	48,49	SESQUITERPENE	0,09
52	49,53	delta-CADINENE	4,20
53	49,56	gamma-CADINENE	0,54
54	50,00	7-epi-alpha-SELINENE	0,03
55	50,20	beta-SESQUIPELLANDRENE	0,27
56	50,44	trans-alpha-BISABOLENE	0,22
57	50,64	SESQUITERPENE	0,13
58	50,89	CADINA-1,4-DIENE	0,11
59	51,47	alpha-AMORPHENE	0,20
60	49,95	ALIPHATIC ALCOHOL	0,01

Disclaimer & Caution:

Please refer to all relevant technical information specific to the product, prior to use. The information contained in this document is obtained from current and reliable sources, Essentially You Oils, provides the information contained herein, but makes no representation as to its comprehensiveness or accuracy. Individuals receiving this information must exercise their independent judgment in determining its appropriateness for a particular purpose. The user of the product is solely responsible for compliance with all laws and regulations applying to the use of the products, including intellectual property rights of third parties. As the ordinary or otherwise use(s) of this product is outside the control of Essentially You Oils, no representation or warranty, expressed or implied, is made as to the effect(s) of such use(s), (including damage or injury), or the results obtained. The liability of Essentially You Oils, is limited to the value of the goods and does not include any consequential loss. Essentially You Oils, shall not be liable for any errors or delays in the content, or for any actions taken in reliance thereon. Essentially You Oils, shall not be responsible for any damages resulting from use of or reliance upon this information. In the event of any dispute, the Customer hereby agrees that Jurisdiction is limited to the province of Ontario.

GCMS ANALYSIS (cont'd.)

PRODUCT NAME: COPAIBA BALSAM ESSENTIAL OIL - 11041

Peak	RT (min)	Compound	%
61	53,76	CALAMENENE	0,05
62	56,06	OXYGENED COMPOUND Mw=208	0,02
63	56,96	epi-CUBEBOL	0,04
64	57,28	SESQUITERPENIC OXIDE	0,01
65	58,33	alpha-CALACORENE	0,10
66	59,16	PALUSTROL	0,02
67	59,29	HUMULENE EPOXIDE	0,03
68	59,77	CUBEBOL	0,05
69	60,61	beta-CALACORENE	0,07
70	61,06	AROMATIC COMPOUND	0,02
71	62,04	CARYOPHYLLENE OXIDE	0,09
72	62,47	EUDESMOL ISOMER	0,03
73	62,56	SESQUITERPENOL	0,02
74	62,82	SESQUITERPENOL Mw=222	0,07
75	64,45	LEDOL	0,07
76	64,71	SESQUITERPENIC EPOXIDE	0,03
77	65,61	CARYOPHYLLENOL	0,21
78	65,93	JUNEOL	0,77
79	66,26	CUBENOL	0,14
80	66,79	GLOBULOL	0,11
81	67,20	VIRIDIFLOROL	0,11
82	68,32	AROMATIC COMPOUND	0,03
83	68,63	10-epi-gamma-EUDESMOL	0,03
84	68,77	ROSIFOLIOL	0,04
85	69,18	SPATHULENOL	0,03
86	69,32	DIHYDROISOCARYOPHYLLENE Mw=206	0,04
87	69,83	SESQUITERPENOL	0,10
88	70,25	COPAENOL ISOMER	0,10
89	70,43	SESQUITERPENIC EPOXIDE	0,04
90	70,57	SESQUITERPENIC EPOXIDE	0,02

Disclaimer & Caution:

Please refer to all relevant technical information specific to the product, prior to use, The information contained in this document is obtained from current and reliable sources, Essentially You Oils, provides the information contained herein, but makes no representation as to its comprehensiveness or accuracy, Individuals receiving this information must exercise their independent judgment in determining its appropriateness for a particular purpose, The user of the product is solely responsible for compliance with all laws and regulations applying to the use of the products, including intellectual property rights of third parties, As the ordinary or otherwise use(s) of this product is outside the control of Essentially You Oils, no representation or warranty, expressed or implied, is made as to the effect(s) of such use(s), (including damage or injury), or the results obtained, The liability of Essentially You Oils, is limited to the value of the goods and does not include any consequential loss, Essentially You Oils, shall not be liable for any errors or delays in the content, or for any actions taken in reliance thereon, Essentially You Oils, shall not be responsible for any damages resulting from use of or reliance upon this information, In the event of any dispute, the Customer hereby agrees that Jurisdiction is limited to the province of Ontario.

GCMS ANALYSIS (cont'd.)

PRODUCT NAME: COPAIBA BALSAM ESSENTIAL OIL - 11041

Peak	RT (min)	Compound	%
91	70,65	SESQUITERPENIC EPOXIDE	0,07
92	70,98	SESQUITERPENOL	0,04
93	71,16	SESQUITERPENOL	0,04
94	71,47	T-CADINOL	0,30
95	71,92	SESQUITERPENOL	0,04
96	72,27	alpha-MUUROLOL	0,60
97	72,83	delta-CADINOL	0,50
98	72,91	SESQUITERPENOL	0,12
99	73,14	SESQUITERPENOL	0,02
100	73,39	FARNESYL ACETATE E-E	0,02
101	73,68	CADALENE	0,05
102	73,81	epi-alpha-BISABOLOL	0,04
103	73,95	alpha-BISABOLOL	0,02
104	74,45	alpha-CADINOL	0,89
105	75,45	EUDESMA-7(11)-EN-4-OL	0,04
106	77,08	SESQUITERPENOL	0,02
107	77,54	SELIN-11-EN-4-OL	0,09
108	81,07	DITERPENIC AROMATIC COMPOUND Mw=272	0,03
109	86,93	AROMATIC COMPOUND	0,04
110	89,61	AROMATIC COMPOUND	0,02
111	92,73	AROMATIC COMPOUND	0,02
112	93,67	epi-MANOOL	0,13
113	95,02	DITERPENIC AROMATIC COMPOUND Mw=272	0,11
		TOTAL	100,00

Disclaimer & Caution:

Please refer to all relevant technical information specific to the product, prior to use. The information contained in this document is obtained from current and reliable sources, Essentially You Oils, provides the information contained herein, but makes no representation as to its comprehensiveness or accuracy. Individuals receiving this information must exercise their independent judgment in determining its appropriateness for a particular purpose. The user of the product is solely responsible for compliance with all laws and regulations applying to the use of the products, including intellectual property rights of third parties. As the ordinary or otherwise use(s) of this product is outside the control of Essentially You Oils, no representation or warranty, expressed or implied, is made as to the effect(s) of such use(s), (including damage or injury), or the results obtained. The liability of Essentially You Oils, is limited to the value of the goods and does not include any consequential loss. Essentially You Oils, shall not be liable for any errors or delays in the content, or for any actions taken in reliance thereon. Essentially You Oils, shall not be responsible for any damages resulting from use of or reliance upon this information. In the event of any dispute, the Customer hereby agrees that Jurisdiction is limited to the province of Ontario.