

! Stay safe

Before you use this foam lance, please check your pressure washer's Pressure Range, Power, and Flow Rate.







The Snow Foam Lance works well with most pressure washers.

However for ones with a low pressure rating, we recommend replacing the \varnothing 1.25mm nozzle with the provided \varnothing 1.1mm nozzle to get the best foaming results. The ' \varnothing 1.1mm nozzle' is part #7 in the following component list.

Here are the recommended pressure rates that would best work with the smaller 1.1mm nozzle:

- Max Pressure \leq 110 Bar
- Power \leq 1500w (1.5kw)
- Flow Rate \leq 7L/min

If you are not sure about your pressure washer's specifications, you can test the foam lance first with the 1.25mm nozzle and replace the nozzle component if you are unsatisfied with the foaming performance.

	Max pressure 150 bar (2200 PSI)
	Max flow 3.8 litres/min
	Max temperature 60°C
	\varnothing nozzle 1.25mm + or 1.1mm



Snow Foam Lance



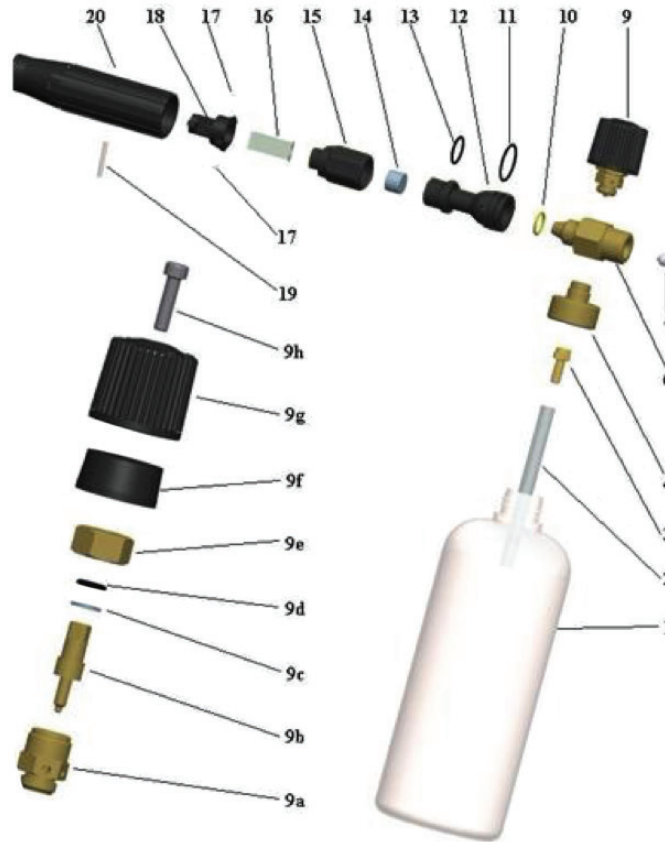
detailstore.com.au

clean
skin.

Component list

? How to use

- 1 Tank
- 2 Sunction draught tube
- 3 Hose barb $\varnothing 6 \frac{1}{8}M$
- 4 Reservoir box
- 6 Central body
- 7 Special Nozzle $\varnothing 1.25 \text{ mm} / \varnothing 1.1 \text{ mm}$
- 9 Mechanical part air intake
- 9a Plunger coupling
- 9b Plunger
- 9c Plunger washer
- 9d NBR o-ring OR2031 70Sh
- 9e Plunger ring nut
- 9f Plastic knob positioning
- 9g Black plastic knob
- 9h Screw T.C.E.I. M5x20 burnished
- 10 NBR o-ring OR2050 yellow
- 11 NBR o-ring OR2087 70Sh
- 12 Upcoming body
- 13 NBR o-ring OR2062 70Sh
- 14 Stainless steel filter
- 15 Deflector coupling
- 16 Thin fan layer stainless steel
- 17 Pin 3x8 (two pins)
- 18 Deflector
- 19 Stainless steel pin $\varnothing 3 \times 25$
- 20 External plastic body



- 1) Wrap the provided PTFE tape on the brass tube (two threads, one on each end), each thread needs approximately 40 – 50cm of PTFE tape.
- 2) Connect the fitting (adapter) with the brass tube and suction tube onto the foam lance unit.
- 3) Fill the fluid tank with the desired amount of shampoo and water. If using Apex Customs Foamstar, please dilute at a ratio of 1:10 or 100ml solution to 1,000ml of water.

For average size sedans, typically 500–600mL of mixed solution is sufficient to cover the entire vehicle; for larger vehicles we recommend filling up to the 700–800mL mark.
- 4) Shake the fluid tank to mix the shampoo with water thoroughly and then attach the fluid tank to the foam lance unit.
- 5) Attach the fitting/adapter to the pressure washer, and foam away.

