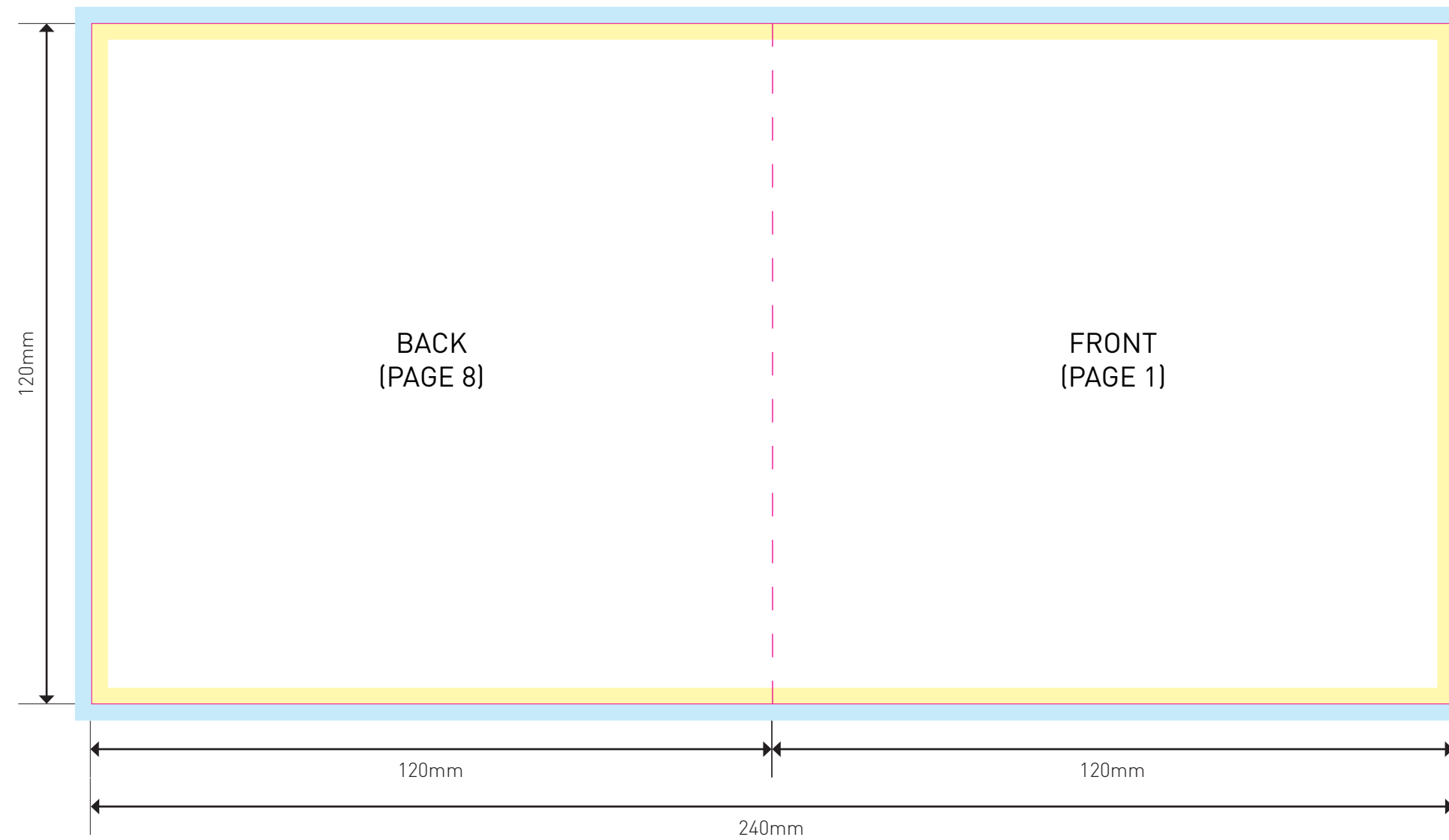


- Cutter
- Fold
- Bleed
- Trim

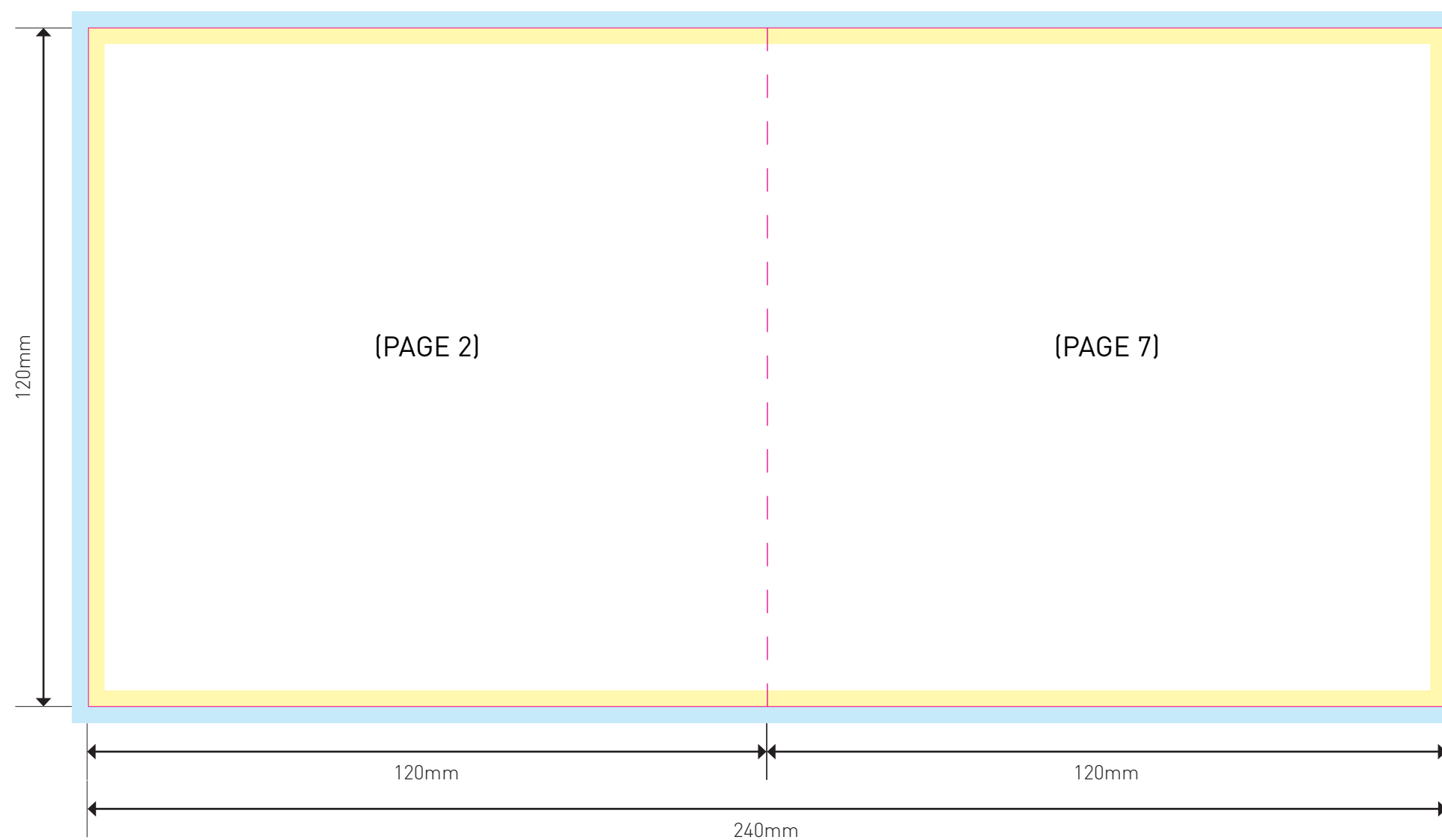


**PRINTING TERMS**

**4/1** - REFERS TO FULL COLOR PRINTING ON ONE SIDE AND BLACK PRINTING ON THE OTHER SIDE.

**4/4** - REFERS TO FULL COLOR PRINTING ON BOTH SIDES.

- Cutter
- Fold
- Bleed
- Trim

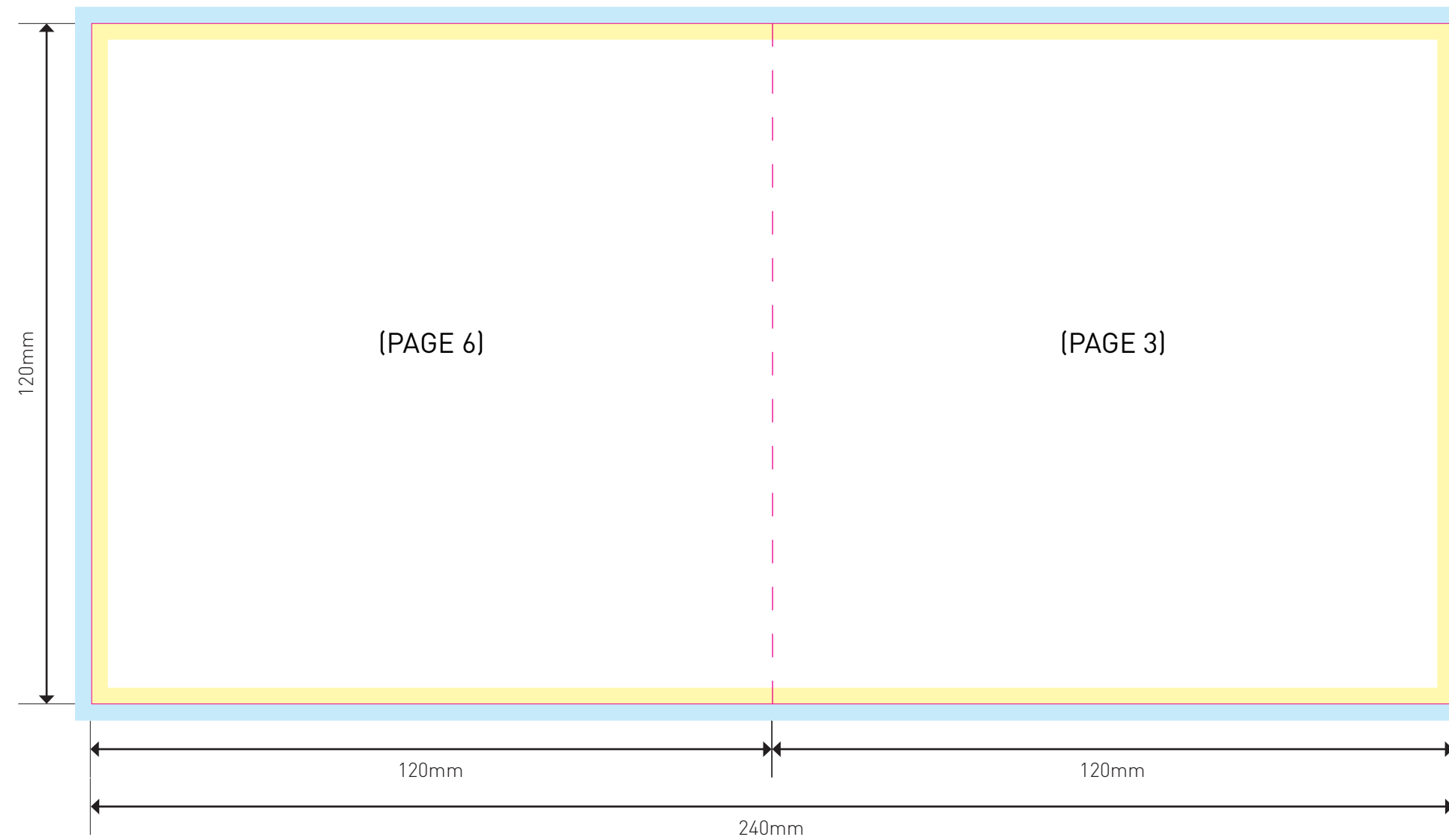


**PRINTING TERMS**

**4/1** - REFERS TO FULL COLOR PRINTING ON ONE SIDE AND BLACK PRINTING ON THE OTHER SIDE.

**4/4** - REFERS TO FULL COLOR PRINTING ON BOTH SIDES.

- Cutter
- Fold
- Bleed
- Trim

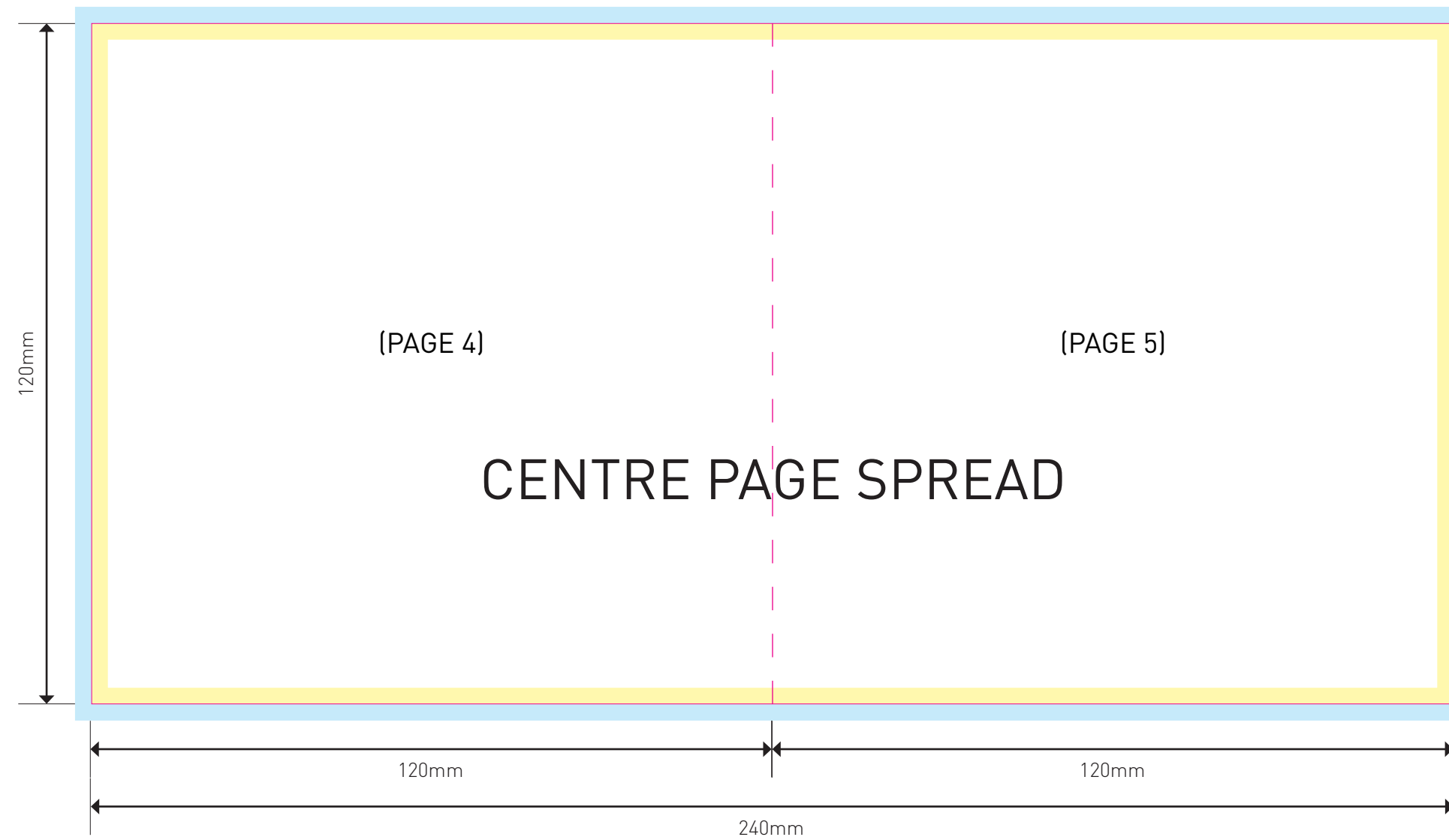


**PRINTING TERMS**

**4/1** - REFERS TO FULL COLOR PRINTING ON ONE SIDE AND BLACK PRINTING ON THE OTHER SIDE.

**4/4** - REFERS TO FULL COLOR PRINTING ON BOTH SIDES.

- Cutter
- Fold
- Bleed
- Trim



**PRINTING TERMS**

**4/1** - REFERS TO FULL COLOR PRINTING ON ONE SIDE AND BLACK PRINTING ON THE OTHER SIDE.

**4/4** - REFERS TO FULL COLOR PRINTING ON BOTH SIDES.