



llumina

LED High/Low Bay

- Genuine replacement for 250/400W Metal Halide
- Suitable for High Bay and Low Bay applications 4 - 12m
- Ideal for food preparation & cold store areas when used with plastic cover (code: 08833/08834)
- IP65 Base Unit
- Anthracite finish
- Meanwell Driver
- Bridgelux LED
- 50000 Hours
- 0-10V Dimming & PIR options
- Now with dimmable driver as standard
- Photocell option now available - Call for details



120W \equiv 250W MH Energy Saving 52%

180W \equiv 400W MH Energy Saving 55%




Code	W	Description	Lm	Temp	Weight Kg	Hours
08835	120	llumina IP65 120W High Bay /Low Bay Base Unit	17000*	4500K	4.46	50000
08836	180	llumina IP65 180W High Bay /Low Bay Base Unit	26000**	4500K	7.91	50000

Code	Description
08827	120° Aluminium Reflector for 120W ILLUMINA IP65 High Bay / Low Bay
08828	90° Aluminium Reflector for 120W ILLUMINA IP65 High Bay / Low Bay
08831	90° Polycarbonate Reflector for 120W ILLUMINA IP65 High Bay / Low Bay
08833	Plastic Cover for 120W ILLUMINA IP65 High Bay / Low Bay - Required for IP65 rating
08829	120° Aluminium Reflector for 180W ILLUMINA IP65 High Bay / Low Bay
08830	90° Aluminium Reflector for 180W ILLUMINA IP65 High Bay / Low Bay
08832	90° Polycarbonate Reflector for 180W ILLUMINA IP65 High Bay / Low Bay
08834	Plastic Cover for 180W ILLUMINA IP65 High Bay / Low Bay - Required for IP65 rating

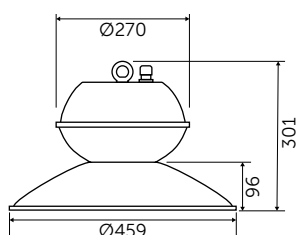


* Exceeds EU standard of 70 for Lumens Maintenance Ratio
 ** Exceeds EU standard of Ra 80 for Colour Rendering Index
 † Subject to terms & conditions (Contact Customer Service)
 * IP65 version 15500 lm
 ** IP65 version 23000 lm

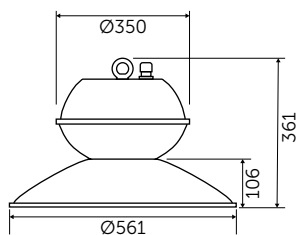
Technical Specification

Data	
Construction	Die Cast Aluminium Base
Driver	Meanwell  /HLG
LED Chip	Bridgelux
IP Rating	IP65
Operating Temp	-30°C to +35°C
Input Voltage	100 - 240V
Power Factor	> 0.9
CRI	85 - Exceeds EU standard of Ra 80 for Colour Rendering Index
LMR	80 - Exceeds EU standard of 70 for Lumens Maintenance Ratio
ECA Compliant	Yes

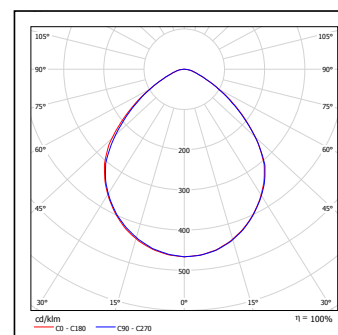
08835 120W 120°



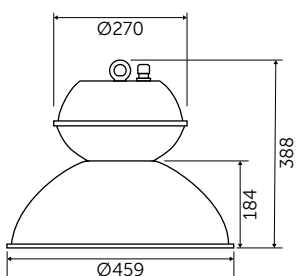
08836 180W 120°



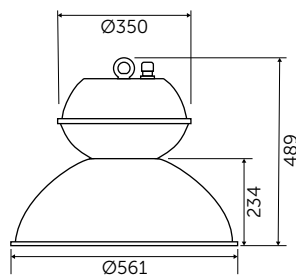
08835 120W 120°



08835 120W 90°



08836 180W 90°



08836 180W 90°

