

CAPTURING HAPPINESS IN HER NOSTALGIC, PAINTERLY WORKS, NEW ZEALAND-BORN SYDNEYSIDER PHOTOGRAPHER POPPIE PACK IS NOW ALSO A GALLERIST IN WILLIAM STREET, PADDINGTON NSW, WHERE YOU'LL FIND HER 'SALTY' PRINTS WITH EVOCATIVE TITLES SUCH AS *DECEMBER STARDUST* (WHIMSICAL SCENE OF SURFERS UNDER A CANDY-TONED HORIZON), *LIKE LEMONADE* (BEACHGOERS SPLASHING IN A FROTH OF CRYSTAL-CLEAR WATERS AT TAMARAMA BEACH), *STONE WASH WAIHEKE* (YACHT SAILING ON THE GLISTENING WATERS OF WAIHEKE ISLAND, NEW ZEALAND) AND *POST COAST COFFEE AND DIP* (SUNSEEKERS ON THE STEPS OF BONDI ICEBERGS). CLASSIFIED ON HER WEBSITE UNDER DESTINATION (FROM BONDI AND BYRON TO INDIA AND HAWAII), COLOUR (PASTEL-PERFECT PINKS, BLUES AND GREENS TO MONOCHROME) AND VIBE (SURF, BEACH, OCEAN), POPPIE'S WORKS ARE OF SUBJECTS SHE LOVES AS SHE SHOOTS BEAUTY WHERE SHE FINDS IT, INCLUDING IMAGES OF FLOWERS AND PALM TREES ALONG WITH THE AMBIENCE OF A LATE-NIGHT FRENCH CAFÉ. HERE, SHE SHARES HER FAVOURITE THINGS. POPPIEPACK.SHOP



Edited by **POPPIE PACK**
Portrait **ALANA LANDSBERRY**

INFLUENCES



SURF CULTURE IS ONE OF MY BIGGEST INSPIRATIONS. FOR THIS REASON, RAES ON WATEGOS IN BYRON BAY, NSW, IS UNBEATABLE FOR A LOCAL HOLIDAY DESTINATION - NOT ONLY IS THE HOTEL EFFORTLESSLY COOL, BUT I CAN WALK FIVE MINUTES UP THE HILL AFTER BREAKFAST AND GET TO THE PASS, ONE OF AUSTRALIA'S MOST WELL-KNOWN SURFING SPOTS, FOR HOURS OF SURF-GAZING AND SHOOTING. RAES IS A BOUTIQUE HOTEL WITH A QUIRKY SHAPED, PERFECTLY AQUA POOL AND LOTS OF CRISPY WHITEWASHED PLASTER. THE FOOD IS EXCELLENT AND THEIR PIÑA COLADAS ARE THE PERFECT BALANCE OF COCONUT AND PINEAPPLE. RAES.COM.AU

INSPIRING



SPACES



MALFATTI GLASS is incredible. I discovered it at Shack Palace in Byron Bay a couple of years ago - they make the perfectly imperfect stemless champagne flute. malfattiglass.com

LIGHT MAGIC
NOGUCHI 'AKARI'
RICE PAPER
LAMPS. [SHOP.
NOGUCHI.ORG](http://SHOP.NOGUCHI.ORG)



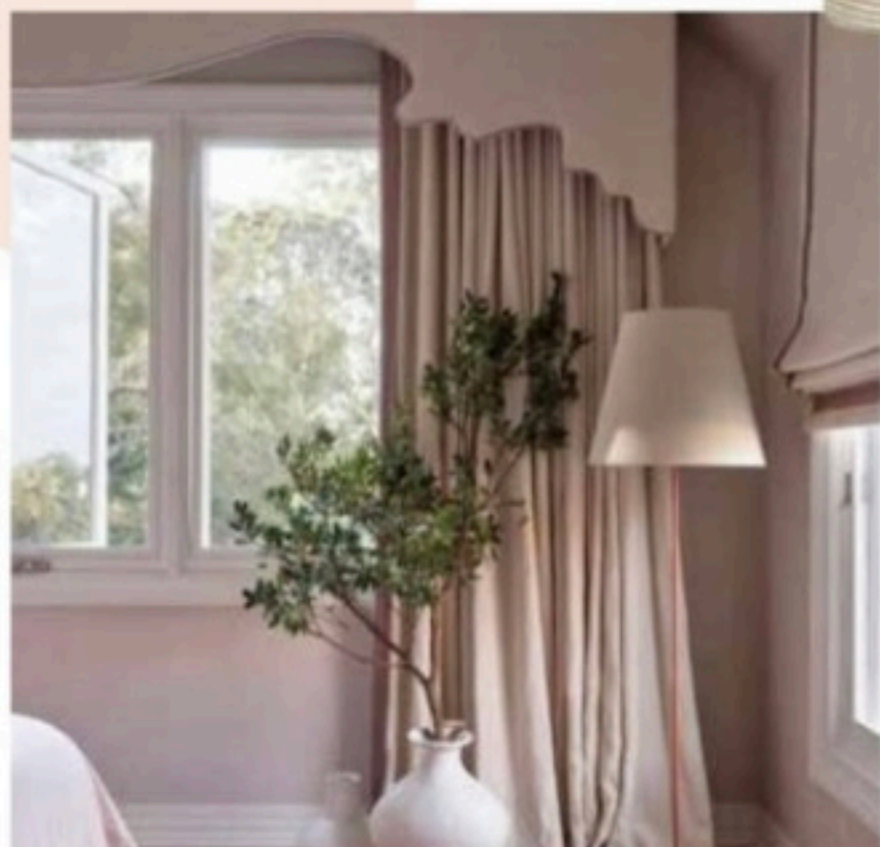
ISLE BOUND I love warm climates and grew up in the *Blue Crush* (2002) generation so, for me, Hawaii is the ultimate feelgood destination. From the moment you land in Honolulu, the exposed, hotel-style gateways give you holiday vibes. Many of the hotels were built in the early 1900s and have a colonial style about them, The Royal Hawaiian Resort has an incredible atmosphere - pink umbrellas, glamorous arches and pristine grounds. We are heading to Hawaii in a few weeks and it's my first time travelling as a family. I can't wait to share this special place with my daughter. royal-hawaiian.com



ARTISANS

02

SIMPLE STUDIO in Alexandria are phenomenal upholsterers who made the most divine muted blush-pink curtains for my daughter's bedroom. Both heavy and soft at the same time, they are hung on a beautiful black-finished bronze rod and rings. simplestudio.com.au





PARIS Kolkhoze (above), a Paris-based gallery, is a beautifully curated store. I love that their website lets you search by aesthetic: classicism, graphic, minimalism, organic – that takes the pain out of ‘does this go with that?’ kolkhoze.fr/en/



I LOVE POOLS WITH DESIGNS ON THE BOTTOM OF THEM. I PARTICULARLY LOVE THE PICASSO INSTALLATION AT THE BOTTOM OF THE POOL AT VILLA EL MARTINETE, MARBELLA, SPAIN.



I've always loved **DIPTYQUE** stores. The boutique on Bleeker Street in NYC is exceptional. The fitouts are so wild and unique with custom chandeliers made of Diptyque candles. diptyqueparis.com/en_us/



ROW SHOW Everything the Olsen twins touch is magic. therow.com/au



PADDINGTON PICKS My William Street neighbourhood offers Sydney's best shopping, with Robyn Cosgrove for rugs (robyncosgrove.com), P.Johnson Femme for tailored fashion (pjt.com/pages/femme) and Bess for native wildflowers galore (besspaddington.com). And for my favourite Society Limonta linen, I head to Ondene in Double Bay (ondene.com).

44 belle

ARCHITECTURAL ELEMENTS 04



I'VE JUST BEEN INTRODUCED TO BASALTE, SMART-HOME LIGHTING HARDWARE – BEAUTIFUL SWITCHES DESIGNED IN BELGIUM WHICH MAKE HAVING A SMART HOME LOOK HOT. [BASALTE.BE/EN](http://basalte.be/en)

BOUTIQUES + ATELIERS



I ABSOLUTELY ADORE modular furniture company USM. I have ordered a large unit for the gallery from Anibou which is all-in-one storage, a circulation point for visitors moving around the space and has special reinforcement bars so people can actually sit on it while they take in the artworks. usm.com; anibou.com.au



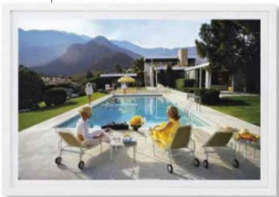
DECORATION

A classic item and one of my favourite pieces of furniture at home is the butterfly chair. It's had a few incarnations over time by different designers over the years and been adapted for different environments. We have two in canvas with a super beachy feel and they create beautiful shapes wherever they are placed: sand, decking, freshly cut green grass. angelucci.net.au

5

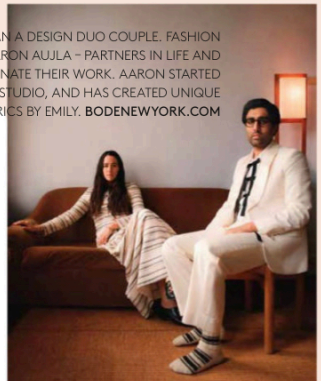
[Winging it]
OUT OF THE CHRYSALIS

INNER CIRCLE I love the 'Glo-Ball' lights by Jasper Morrison and the 'Taccia' lamp by the Castiglioni brothers. flou.com



THERE'S NOTHING MUCH COOLER THAN A DESIGN DUO COUPLE. FASHION DESIGNER EMILY BODE AND ARTIST AARON AUJLA - PARTNERS IN LIFE AND BUSINESS - FOUND A WAY TO CROSS-POLLINATE THEIR WORK. AARON STARTED GREEN RIVER PROJECT, A FURNITURE DESIGN STUDIO, AND HAS CREATED UNIQUE PIECES UPHOLSTERED IN BODE FABRICS BY EMILY. BODENEWYORK.COM

I ADMIRE SLIM AARONS FOR THE WAY HE CAPTURED A VIBE. IT'S ONE THING TO SHOOT A SCENE, ANYONE CAN DO THAT, BUT TO IMMORTALISE A MOOD WITHIN A PHOTOGRAPH TAKES TALENT. GETTYIMAGESGALLERY.COM



06 CREATIVE TYPES