

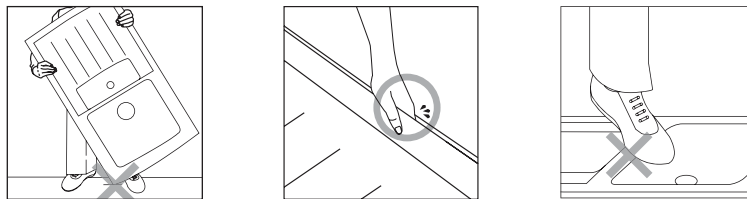
Quartztone®

Granite Sink Installation instruction

Please carefully review complete instructions before beginning installation. These instructions are for installation with solid surface and composite material countertops. Houzer recommends a professional installer and is not responsible for damages to the sink or countertop during installation. Warranty void for improper installation and handling. **Note: When punching out hole(s), ensure sink is supported on outer edge either by placing in countertop cutout or securely supporting outer edge before punching out hole. Do NOT punch hole while sink is free-standing.***

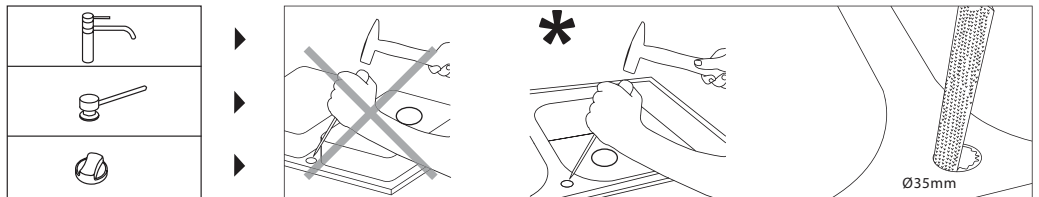
Handling

Be sure to wear personal safety devices such as safety goggles at all times.

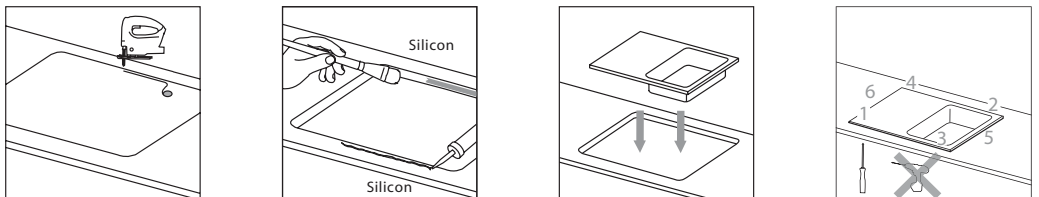


Hole additions

Faucet holes are pre-drilled from the bottom and marked yellow on top ledge. Tap the yellow marker only from the top.

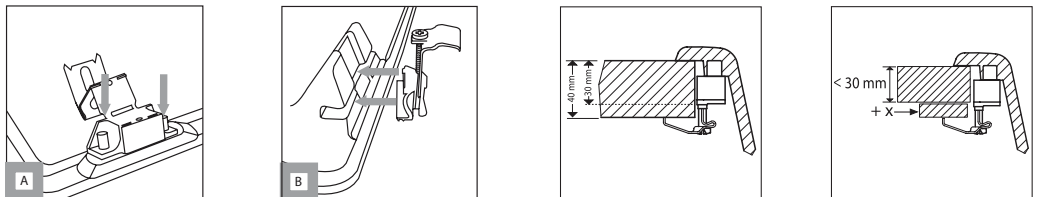


Topmount/Drop-in installation

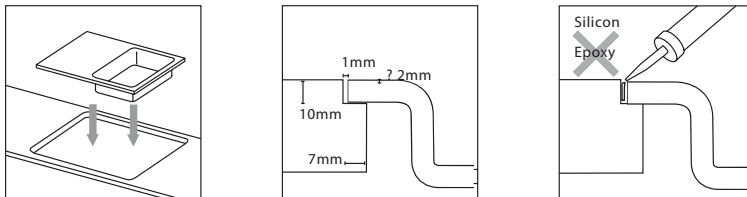


Topmount/Drop-in installation

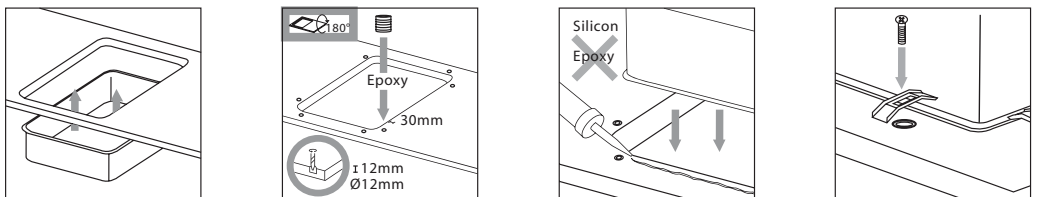
Mounting and fastening clips



Flush mount installation



Undermount installation



Care and Maintenance

Light but frequent cleaning, usually with no more than a damp cloth, then drying with a soft cloth would be the best way to keep your sink clean and looking like new.

- **Daily cleaning**

Always clean after each use by thoroughly rinsing with mild soap and warm water then wipe dry with a soft cloth. This will prevent most water spots or dirt build-up.

- **Minor stains and mineral deposits**

Clean any daily stains or mineral deposits built-up over time with a mild solution of vinegar and water, then rinse thoroughly with water and wipe dry.

- **Stubborn stains**

Clean by soaking the stained area with a solution of 50% bleach and 50% of water or non-abrasive household cleaner. Rinse thoroughly with warm water and wipe dry.

- **Hard mineral deposits**

To remove hard calcium or lime deposits, Lime-A-Way® is recommended. Rinse thoroughly with warm water and wipe dry.

- **Do not use**

Paint or nail-polish remover, straight bleach or strong chemical, abrasive cleaning products, scoring pad or steel wool.