



AIRSPADE®

Innovation
in the air.

Pneumatic
Soil Excavation

airspade.com



Table of Contents

AirSpade 2000 Series	3
AirSpade 3000 Series	7
AirSpade 4000 Series	9
AirSpade 5000 Series	13
AirSpade Vac Series	20
Accessories	26
Replacement Parts	30
FAQs	38



Always wear eye and ear protection when operating air tools and related equipment.



2000 Series

Today, thousands of AirSpade 2000s are used in arboriculture, construction, and specialty applications worldwide. AirSpade 2000 is the tool of choice due to its fast, easy and non-destructive method of excavation.

TYPICAL APPLICATIONS



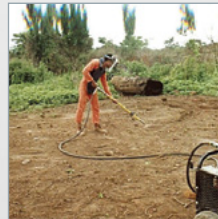
Arboriculture & Horticulture



Construction



Trench Rescue



De-mining



Environmental Remediation



AirSpade 2000

Utilizing the power of compressed air, AirSpade 2000 uncovers underground objects, utility lines, or even sensitive tree roots without harm. Featuring the high performance, proprietary Supersonic Nozzle, AirSpade 2000 digs faster and more efficiently than competitive tools. Rugged, lightweight construction. Dead-man trigger ensures safe operation. Made in the USA.

Part Number	Extension Length (ft)	Soil Excavation Rate (cubic ft/min)	Flow (cfm)	Min. Compressor Required	Weight (lbs)
HT140	4	0.4 - 0.9	25	6 hp	6.6
HT144	2	0.7 - 1.1	60	13 hp	5.6
HT134	4	0.7 - 1.1	60	13 hp	6.6
HT139	4	0.9 - 1.5	105	23 hp	10.0
HT116	3	1.2 - 1.8	150	33 hp	9.0
HT130	4	1.2 - 1.8	150	33 hp	7.0
HT138	4	1.7 - 2.3	225	50 hp	7.1

See website for full specifications

Features

- Ergonomic, pistol-grip style handle with soft rubber grip
- Comfortable, dead-man trigger
- Air pressure gauge
- Lightweight, fiberglass barrel with adjustable dirt shield
- Stainless steel proprietary Supersonic Nozzle
- Inlet: 3/4" FNPT
- Universal "Chicago-style" swivel coupling



Arbor/Landscape Kit

Kit includes the most popular components and accessories utilized by arborists and landscapers. Features the powerful AirSpade 2000 air-excavation tool equipped with proprietary Supersonic Nozzle for superior digging performance. Ideal for sensitive arboreal work including vertical mulching, bare rooting, radial trenching, and soil aeration. Rugged, lightweight construction. Dead-man trigger ensures safe operation. Fiberglass barrel provides degree of protection from buried electrical lines. Made in USA.

Part Number	Model/Description	Min. Compressor Required
HT142	Arbor/Landscape Kit with 105 cfm nozzle	23 hp
HT107	Arbor/Landscape Kit with 150 cfm nozzle	33 hp
HT109	Arbor/Landscape Kit with 225 cfm nozzle	50 hp

See website for full specifications

Features

- AirSpade 2000 handle with universal “Chicago-style” swivel coupling
- 4 ft. barrel with adjustable dirt shield
- 45° angled adapter
- 105, 150, or 225 cfm proprietary Supersonic Nozzle
- 1" ID x 10' lightweight air hose with “Chicago-style” connectors
- Heavy-duty locking storage case

Trench Rescue Kit



Construction Kit



Trench Rescue/Construction Kits

Kits include the most popular components and accessories utilized by construction and trench rescue crews. Features the powerful AirSpade 2000 air-excitation tool equipped with proprietary Supersonic Nozzle for superior digging performance. Ideal for sensitive excavation work including utility locating and repair, key holing, potholing, and roadwork. Rugged, lightweight construction. Dead-man trigger ensures safe operation. Made in USA.

Part Number	Model / Description	Min. Compressor Required
HT108	Trench Rescue Kit with 60 and 150 cfm nozzles	33 hp
HT114	Construction Kit with 105 cfm nozzle	23 hp
HT106	Construction Kit with 150 cfm nozzle	33 hp
HT102	Construction Kit with 225 cfm nozzle	50 hp

See website for full specifications

Features

- AirSpade 2000 handle with universal “Chicago-style” swivel coupling
- 4 ft. barrel with adjustable dirt shield
- 3 ft. extension and coupler (Construction Kit only)
- 45° angled adapter
- 60, 105, 150, or 225 cfm proprietary Supersonic Nozzle
- 1" ID x 10' lightweight air hose with “Chicago-style” connectors
- Heavy-duty locking storage case



3000 Series

The most powerful, compressed air-powered, excavation tool available on the market today. Delivering 330 cfm, the AirSpade 3000 provides unprecedented performance in heavy-duty arboriculture, utility, and construction applications.

TYPICAL APPLICATIONS



Arboriculture &
Horticulture



Utility & Construction



AirSpade 3000

AirSpade 3000 is the most powerful air excavation tool available on the market today. Featuring the proprietary Supersonic Nozzle, the rugged, heavy-duty AirSpade 3000 is the tool of choice to move maximum dirt in the minimum amount of time. Dead-man trigger ensures safe operation. Fiberglass extension provides degree of protection from buried electrical lines. Made in USA.

Part Number	Extension Length (ft)	Soil Excavation Rate (cubic ft/min)	Flow (cfm)	Min. Compressor Required	Weight (lbs)
LT3000	5	2.4 - 3.0	330	73 hp	15

See website for full specifications

Features

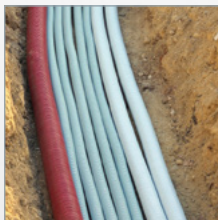
- In-line style handle with soft rubber grip
- Dead-man trigger
- 5 ft. fiberglass barrel
- Adjustable dirt shield
- Stainless steel 330 cfm proprietary Supersonic Nozzle
- Inlet: 1 1/4" NPT (Male)
- 1" Air-King 4-Lug Connector



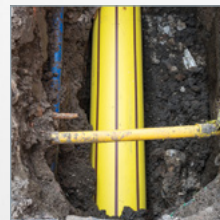
4000 Series

Featuring a high-dielectric, insulated barrel with non-sparking bronze components, the Utility AirSpade 4000 is the tool of choice when working around underground gas, electric, water and telecommunication lines.

TYPICAL APPLICATIONS



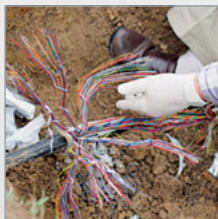
Electric Power Lines



Gas Pipes



Water & Sewer Lines



Telecommunication Lines



Utility AirSpade 4000

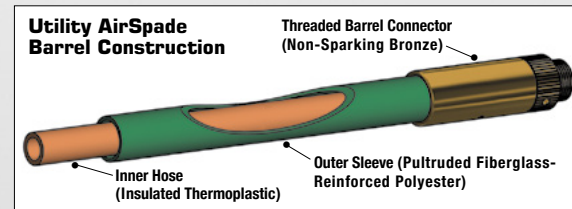
Setting a new standard for air excavation tools, the Utility AirSpade 4000 Series harnesses the power of compressed air to safely uncover underground utility lines without harm. AirSpade's high-performance, proprietary Supersonic Nozzle generates a laser-like jet that moves at twice the speed of sound for faster, more effective digging. With non-sparking bronze nozzle, Brass components, electrically insulated 4 ft. barrel rated to 300kV, and a lightweight, ergonomic handle, the Utility AirSpade 4000 maximizes job site safety while minimizing operator fatigue. Aluminum handle features full size grip opening to accommodate linesman's gloves. Dead-man trigger ensures safe operation and trigger guard prevents accidental activation. Retractable handle provides superior operator control. Integral pressure gauge ensures optimal digging performance. Made in USA

Part Number	Extension Length (ft)	Soil Excavation Rate (cubic ft/min)	Flow (cfm)	Min. Compressor Required	Weight (lbs)
ASU4105G4	4	0.9 - 1.5	105	23 hp	16
ASU4150G4	4	1.2 - 1.8	150	33 hp	16
ASU4225G4	4	1.7 - 2.3	225	50 hp	16

See website for full specifications

Features

- Rugged, ergonomic handle with plastic-coated grip
- Retractable handle and integral air-pressure gauge
- Insulated, 4 ft. fiberglass barrel rated up to 300kV
- Non-sparking brass barrel sleeves and threaded connectors
- Adjustable, rubber spray shield
- 105, 150, or 225 cfm non-sparking, nickel aluminum bronze Supersonic Nozzle
- Inlet: 3/4" FNPT
- "Chicago-style" swivel connector





Utility AirSpade 4000 Kit

Kit includes the most popular components and accessories utilized by utility workers. Features the powerful Utility AirSpade 4000 air-excavation tool equipped with proprietary, non-sparking bronze nozzle for superior digging performance. Rugged, lightweight ergonomic handle with retractable stabilizer bar features dead-man trigger for comfortable, safe operation. Insulated, 4 ft. fiberglass barrel, rated up to 300kV, provides protection from buried electrical lines. Heavy-duty locking storage case. Made in USA.

Part Number	Model / Description	Min. Compressor Required
ASU4105KT	Utility AirSpade 4000 Kit with 105 cfm nozzle	23 hp
ASU4150KT	Utility AirSpade 4000 Kit with 150 cfm nozzle	33 hp
ASU4225KT	Utility AirSpade 4000 Kit with 225 cfm nozzle	50 hp

See website for full specifications

Features

- Utility AirSpade handle assembly with "Chicago-style" swivel connector
- 4 ft. insulated barrel with dirt shield
- 3 ft. insulated extension and non-sparking brass coupler
- 45° non-sparking brass angled adapter
- 105, 150, or 225 cfm non-sparking nickle aluminum bronze nozzle
- 1" ID x 10' lightweight air hose with "Chicago-style" connectors
- Heavy-duty plastic storage case with lock





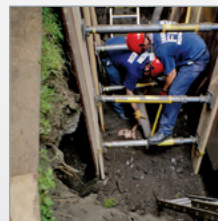
5000 Utility Series

AirSpade 5000 harnesses the power of compressed air by incorporating the high-performance, proprietary AirSpade Supersonic Nozzle. Fabricated from stainless steel, the nozzle generates a laser-like air jet that moves at twice the speed of sound for faster, more effective digging.

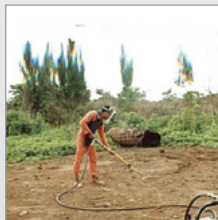
TYPICAL APPLICATIONS



Construction



Trench Rescue



De-mining



Environmental Remediation



Utility AirSpade 5000

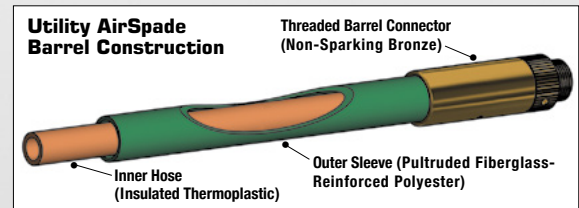
Safely uncover underground utilities with the AirSpade 5000 Utility Series – the latest innovation in the AirSpade product line. Featuring an in-line style handle, AirSpade 5000 Utility is designed for air excavation applications where gripping the tool in a vertical position is preferred. Comfortable plastic grip provides thermal protection and a degree of electrical insulation. Dead-man trigger ensures safe operation and trigger guard prevents accidental activation. Integral pressure gauge ensures optimal digging performance. 3/4" NPT compressed air inlet equipped with 3/4" swivel-type universal coupler. Made in USA

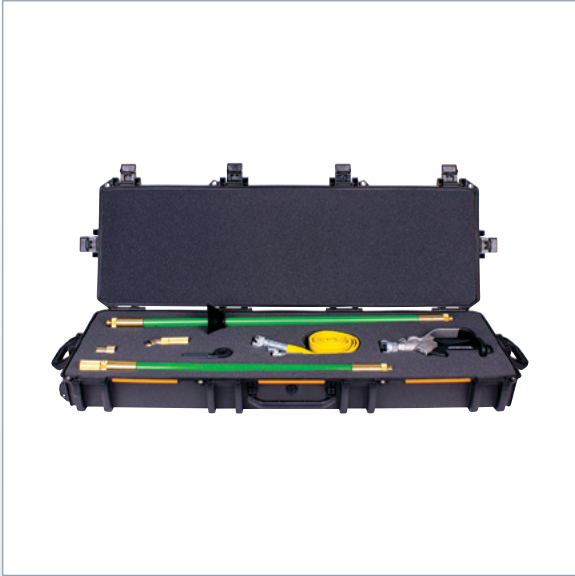
Part Number	Extension Length (ft)	Soil Excavation Rate (cubic ft/min)	Flow (cfm)	Min. Compressor Required	Weight (lbs)
ASU54105	4	0.9 - 1.5	105	23 hp	9
ASU54150	4	1.2 - 1.8	150	33 hp	9
ASU54225	4	1.7 - 2.3	225	50 hp	9

See website for full specifications

Features

- AS 5000 Handle with 3/4" NPT inlet
- Swivel-type universal coupler
- 300kV rated, insulated 4 ft. fiberglass barrel
- Adjustable, rubber dirt shield
- 105, 150, or 225 cfm non-sparking, bronze proprietary Supersonic Nozzle
- Detachable, auxiliary handle





Utility AirSpade 5000 Kit

Kit features the powerful AirSpade 5000 Utility air-excavation tool with AirSpade Supersonic Nozzle for superior digging performance. Ideal for safely uncovering underground electric, gas, water, or telecommunication lines. In-line style handle designed for applications where gripping the tool in a vertical position is preferred. AirSpade 5000 Utility harnesses the power of compressed air by incorporating the high-performance, proprietary AirSpade Supersonic Nozzle. Fabricated from non-sparking bronze, the nozzle generates a laser-like air jet that moves at twice the speed of sound for faster, more effective digging. Made in USA.

Part Number	Model / Description	Min. Compressor Required
ASU50105KT	Utility AirSpade 5000 Kit with 105 cfm nozzle	23 hp
ASU50150KT	Utility AirSpade 5000 Kit with 150 cfm nozzle	33 hp
ASU50225KT	Utility AirSpade 5000 Kit with 225 cfm nozzle	50 hp

See website for full specifications

Features

- 225kV rated, insulated 3 ft. fiberglass extension with brass coupler
- 300kV rated, insulated 4 ft. fiberglass barrel with adjustable, rubber dirt shield
- AS 5000 Handle with swivel-type universal coupler
- 105, 150, or 225 cfm non-sparking, bronze proprietary Supersonic Nozzle
- Detachable, auxiliary handle
- 45° non-sparking brass angled adapter
- 1" ID x 10' lightweight air hose with universal couplings
- Heavy-duty locking storage case





5000 Arbor Series

AirSpade 5000 harnesses the power of compressed air by incorporating the high-performance, proprietary AirSpade Supersonic Nozzle. Fabricated from stainless steel, the nozzle generates a laser-like air jet that moves at twice the speed of sound for faster, more effective digging.

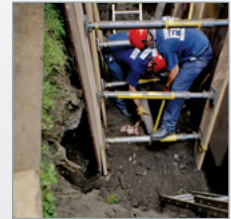
TYPICAL APPLICATIONS



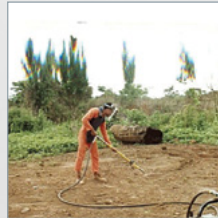
Arboriculture & Horticulture



Construction



Trench Rescue



De-mining



Environmental Remediation



Arbor AirSpade 5000

Safely uncover sensitive tree roots and other underground objects with the AirSpade 5000 Arbor Series – the latest innovation in the AirSpade product line. Featuring an in-line style handle, AirSpade 5000 Arbor is designed for air excavation applications where gripping the tool in a vertical position is preferred. AirSpade 5000 Arbor harnesses the power of compressed air by incorporating the high-performance, proprietary AirSpade Supersonic Nozzle. Fabricated from stainless steel, the nozzle generates a laser-like air jet that moves at twice the speed of sound for faster, more effective digging. Made in USA

Part Number	Extension Length (ft)	Soil Excavation Rate (cubic ft/min)	Flow (cfm)	Min. Compressor Required	Weight (lbs)
ASA54025	4	0.4 - 0.9	25	6 hp	9
ASA54060	4	0.7 - 1.1	60	13 hp	9
ASA54105	4	0.9 - 1.5	105	23 hp	9
ASA54150	4	1.2 - 1.8	150	33 hp	9
ASA54225	4	1.7 - 2.3	225	50 hp	9

See website for full specifications

Features

- AS 5000 Handle with 3/4" NPT inlet
- 3/4" swivel type, universal coupler
- Insulated, 4 ft. fiberglass barrel
- Adjustable, rubber dirt shield
- Stainless steel proprietary Supersonic Nozzle
- Detachable auxiliary handle



Arbor AirSpade 5000 Kit

Kit features the powerful AirSpade 5000 Arbor air-excavation tool with AirSpade Supersonic Nozzle for superior digging performance. Ideal for sensitive arboreal work including vertical mulching, bare rooting, radial trenching, and soil aeration. In-line style handle designed for applications where gripping the tool in a vertical position is preferred. AirSpade 5000 Arbor harnesses the power of compressed air by incorporating the high-performance, proprietary AirSpade Supersonic Nozzle. Fabricated from stainless steel, the nozzle generates a laser-like air jet that moves at twice the speed of sound for faster, more effective digging. Made in USA.

Part Number	Model / Description	Min. Compressor Required
ASA50105KT	Arbor AirSpade 5000 Kit with 105 cfm nozzle	23 hp
ASA50150KT	Arbor AirSpade 5000 Kit with 150 cfm nozzle	33 hp
ASA50225KT	Arbor AirSpade 5000 Kit with 225 cfm nozzle	50 hp

See website for full specifications

Features

- AS 5000 Handle with 3/4" NPT inlet
- Swivel-type universal coupler
- Insulated, 4 ft. fiberglass barrel
- Adjustable, rubber dirt shield
- 105, 150, or 225 cfm stainless steel proprietary Supersonic Nozzle
- Detachable, auxiliary handle
- 45° angled adapter
- 1" ID x 10' lightweight air hose with universal couplers
- Heavy-duty, locking storage case

SPADE

**AIRSPADE
VAC**
airspade.com

**AIRSPADE
VAC**
airspade.com

**AIRSPADE
VAC**
airspade.com





AirSpade Vac

Powered by compressed air, AirSpade Vac is the cost-effective mobile alternative to large, expensive vacuum trucks.

TYPICAL APPLICATIONS

- Utility potholing
- Manhole and valve clean-out
- Utility pole soil excavation
- Meter box cleaning
- Uncovering splice locations
- Surface drain inlet clean-out
- Contaminated soil removal
- Demolition debris cleanup
- Sludge and mud removal



AirSpade Vac Excavator

Powered by compressed air, AirSpade Vac is the mobile alternative to large, expensive vacuum trucks. Effectively vacuums up to 2 cubic ft/min of spoils including dirt, sand, gravel, small rocks, and muck. Designed to run off a standard, 185 cfm tow-behind air compressor, the AirSpade Vac features a powerful multi-stage venturi vacuum engine with no electric motors to burn out and no bearings or rotating parts to wear out. Tank capacity of 11 cubic ft. (82 gallons) with an extra-wide dump door facilitates emptying spoils for backfilling. Washable exhaust filter bag captures dust and eliminates need for internal filter. Rugged 15" pneumatic tires provide superior maneuverability. Featuring all aluminum construction and heavy-duty side rails, loading the AirSpade Vac onto the bed of a pickup truck is an easy task. Made in USA.

Part Number	Vacuum Flow (cfm)	Vacuum Lift (in H2O)	Min. Compressor Required	Dimensions (L" x W" x H")	Weight (lbs)
AVU16540	750	262	37 hp	79 x 38 x 61.5	218

See website for full specifications

Features

- Heavy-duty, all aluminum construction
- 24" x 16" dump door
- Removable, venturi vacuum engine assembly
- Washable exhaust filter bag
- 15" diameter pneumatic tires
- Air supply pressure gauge
- 3/4" FNPT compressed air inlet with universal coupler
- 4" ID x 15' heavy-duty, lightweight vacuum hose
- 4" ID x 4' clear plastic vacuum wand



AirSpade 5000 Utility Vac Excavator

AirSpade Vac and Utility AirSpade – the ideal combination to safely uncover buried electric, gas and water lines. Powered by a 185 cfm tow-behind compressor, AirSpade Vac is the mobile alternative to large, expensive vacuum trucks. Effectively vacuums up to 2 cubic ft/min of spoils including dirt, sand, gravel, small rocks, and muck. Featuring a powerful venturi vacuum engine, the AirSpade Vac features a powerful multi-stage venturi vacuum engine with no electric motors to burn out and no bearings or rotating parts to wear out. AirSpade Vac boasts an 11 cubic ft. (82 gallon) tank with extra-wide dump door. Compact, lightweight and maneuverable, loading the AirSpade Vac onto a pickup truck is a cinch. Utility AirSpade's proprietary Supersonic Nozzle turns compressed air into a high-speed, laser-like jet that dislodges soil without damage to underground objects. Non-sparking components and insulated barrel provides protection for utility crews. Made in USA.

Features

- Heavy-duty, all aluminum construction
- 24" x 16" dump door
- Removable, venturi vacuum engine assembly
- Washable exhaust filter bag
- AS 5000 Handle with 3/4" NPT inlet
- Swivel-type universal coupler
- 300kV rated, insulated 4 ft. fiberglass barrel
- Adjustable, rubber dirt shield
- Detachable, auxiliary handle

Part Number	Model / Description	Min. Compressor Required
ASV82005KTU	AirSpade 5000 Utility	37 hp

See website for full specifications



AirSpade 4000 Utility Vac Excavator Kit

AirSpade Vac and Utility AirSpade 4000 – the ideal combination to safely uncover buried electric, gas and water lines. Powered by a 185 cfm tow-behind compressor, AirSpade Vac is the mobile alternative to large, expensive vacuum trucks. Effectively vacuums up to 2 cubic ft/min of spoils including dirt, sand, gravel, small rocks, and muck. Featuring a powerful venturi vacuum engine, the AirSpade Vac features a powerful multi-stage venturi vacuum engine with no electric motors to burn out and no bearings or rotating parts to wear out. AirSpade Vac boasts an 11 cubic ft. (82 gallon) tank with extra-wide dump door. Compact, lightweight and maneuverable, loading the AirSpade Vac onto a pickup truck is a cinch. Utility AirSpade's proprietary Supersonic Nozzle turns compressed air into a high-speed, laser-like jet that dislodges soil without damage to underground objects. Non-sparking components and insulated barrel provides protection for utility crews. Made in USA.

Features

- Heavy-duty, all-aluminum construction
- 24" x 16" dump door
- Removable, venturi vacuum engine assembly
- 15" diameter pneumatic tires
- 4" ID x 15' heavy-duty, lightweight vacuum hose
- 4" ID x 4' clear plastic vacuum wand
- Rugged, ergonomic handle with plastic-coated grip
- Insulated, 4' fiberglass barrel rated up to 300kV
- Non-sparking brass, 150 cfm nozzle and barrel components

Part Number

Model / Description

Min. Compressor Required

AVU16540KTU

AirSpade 4000 Utility

37 hp

See website for full specifications



AirSpade 2000 Arborist Vac Excavator Kit

AirSpade Vac Excavator and AirSpade 2000 – the ideal combination to safely uncover sensitive tree roots and underground objects without harm. Powered by a 185 cfm tow-behind compressor, AirSpade Vac is the mobile alternative to large, expensive vacuum trucks. Effectively vacuums up to 2 cubic ft./min of spoils including dirt, sand, gravel, small rocks, and muck. Featuring a powerful venturi vacuum engine, the AirSpade Vac features a powerful multi-stage venturi vacuum engine with no electric motors to burn out and no bearings or rotating parts to wear out. AirSpade Vac boasts an 11 cubic ft. (82 gallon) tank with extra-wide dump door. Compact, lightweight and maneuverable, loading the AirSpade Vac onto a pickup truck is a cinch. AirSpade 2000 digs faster and more efficiently than competitive tools. Featuring the proprietary, Supersonic Nozzle, AirSpade 2000 is effective in virtually all soils and even hard clays. Ideal for sensitive arboreal work including vertical mulching, bare rooting, radial trenching, and soil aeration. Made in USA.

Features

- Heavy-duty, all-aluminum construction
- 24" x 16" dump door
- Removable, venturi vacuum engine assembly
- 15" diameter pneumatic tires
- 4" ID x 15' heavy-duty, lightweight vacuum hose
- 4" ID x 4' clear plastic vacuum wand
- Ergonomic, pistol-grip style handle with soft rubber grip
- Comfortable, dead-man trigger
- 150 cfm stainless steel supersonic nozzle

Part Number	Model / Description	Min. Compressor Required
AVU16540KTA	AirSpade 2000 Arborist	37 hp

See website for full specifications

Accessories

- Extensions • Barrels • Hoses • Cases • Angled Adapters





2000 Series Extensions

Heavy-duty extensions for AirSpade 2000 air-excavation tools. Provides extended reach capability for hard-to-reach locations. Includes coupler.

Part #	Size
HT122	2 ft.
HT121	3 ft.
HT154	4 ft.
HT120	5 ft.



2000 Series Barrels

Heavy-duty fiberglass barrels for AirSpade 2000. Adjustable dirt shield protects operator from flying debris.

Part #	Size
HT148	2 ft.
HT131	3 ft.
HT118	4 ft.



3000 Series Extension

Heavy-duty, 3 ft. fiberglass extension for AirSpade 3000 air-excavation tool. Provides extended reach capability for hard-to-reach locations. Adjustable dirt shield protects operator from flying debris.

Part #	Size
LT17	3 ft.



4000 Series Barrels

Heavy-duty, electrically insulated, 4 ft. barrel for Utility AirSpade 4000. Adjustable dirt shield protects operator from flying debris. Constructed from high-pressure rated, insulated inner air hose surrounded by non-conductive, rigid fiberglass outer tube.

ASU4004BD



4000 Series Extensions

Heavy-duty, electrically insulated extensions for Utility AirSpade 4000. Provide extended reach capability for hard-to-reach locations. Constructed from high-pressure rated, insulated inner air hose surrounded by non-conductive, rigid fiberglass outer tube. Inner air hose rated to 75kV per ft. for 5 minutes per SAE 100R7. Outer fiberglass tube rated to 100kV per ft. for 5 minutes per ASTM F711. Non-sparking brass connector hardware. Compatible with all AirSpade 4000 components and accessories. Includes non-sparking brass connector.

Part #	Size
ASU4002EX	2 ft.
ASU4003EX	3 ft.
ASU4004EX	4 ft.
ASU4005EX	5 ft.



Storage Case

Rugged, watertight, locking storage case. Designed to hold the AirSpade 2000, AirSpade 4000, and components. **HT132**



2000 Series 45 Degree Angled Adapter

Redirects the AirSpade Supersonic Nozzle air-jet by 45 degrees. Especially useful in tight locations such as deep excavations or potholes. Swivels with 360 degrees of freedom and locks into desired position. Compatible with all AirSpade 2000 components and accessories. **HT119**



Face Shield & Headgear

Impact resistant face shield with headgear provides full-face protection when working with air-excitation tools. Adjusts for comfortable fit. Fits head sizes 6 1/2 to 8. **HT136**



4000 Series 45 Degree Angled Adapter

Redirects the AirSpade 4000 Supersonic Nozzle air-jet by 45 degrees. Especially useful in tight locations such as deep excavations or potholes. Swivels with 360 degrees of freedom and locks into desired position. Compatible with all AirSpade 4000 components and accessories. **ASU4045AA**



Auxiliary Handle

Provides convenient two-handed operation for AirSpade 2000, 4000, and 5000. Mounts on barrels and extensions. Swivels and clamps in any desired position. **HT180**



Lightweight Air Hose

Superior alternative to standard-weight air hose. Ultra lightweight design reduces worker fatigue. Stores flat. High-visibility safety yellow. Pre-mounted couplers.

Part #	Length
HT57	10 ft.
HT111	25 ft.
HT112	50 ft.



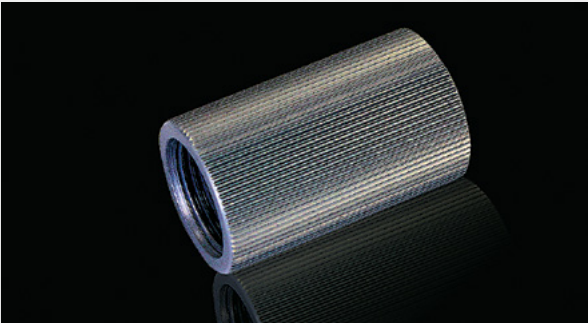
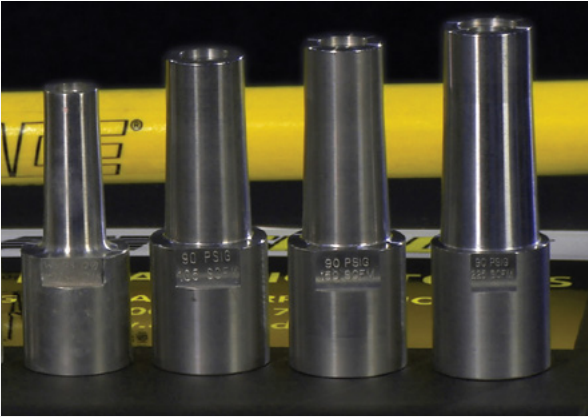
Standard Air Hose

Tough, heavy-duty rubber, abrasion and ozone resistant, general service air hose. Type "A" construction. Red. Pre-mounted "Chicago-style" couplers. 1" ID x 50'.

Part #	Size
HT113	50 ft.

Replacement Parts

- Nozzles • Handles • Repair Kits





2000 Series Supersonic Nozzles

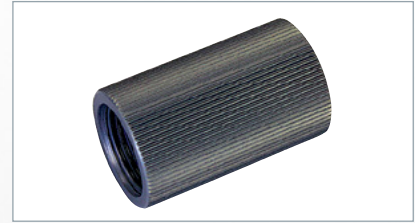
Featured exclusively on AirSpade air-excavation tools, the Supersonic Nozzle delivers superior performance vs competitive nozzles, or open pipes. Proprietary design turns compressed air into high speed, laser like jet moving at Mach 2 twice the speed of sound. The result is faster and more efficient excavation, uncovering underground utility lines, pipes, hazardous material containers, or even sensitive tree roots without harm. Mounts on standard AirSpade 2000 barrel. Stainless steel. Female threaded connection.

Part #	Nozzle
HT126	25 cfm
HT125	60 cfm
HT156	105 cfm
HT123	150 cfm
HT127	225 cfm



Adjustable Dirt Shield

Adjustable dirt shield protects operator from flying debris. Sliding collet locks dirt shield into desired position. Fits AirSpade 2000 and 4000 barrels and extensions. **HT133**



2000 Series Coupler

Provides secure connection between AirSpade 2000 barrels and extensions. Anodized aluminum. Dual, female threaded connections. **HT155**



2000 Series Handle Assembly

Handle assembly for AirSpade 2000. Comfortable, ergonomic design provides superior grip. Rugged, lightweight aluminum construction. Dead-man trigger ensures safe operation. Outlet: female threaded connection. **HT117**



2000 Series Handle Repair Kit

Provides all of the parts necessary to maintain and/or repair the AirSpade 2000 handle.

HT150

If you purchased your unit prior to 2010

HT150-1

If you purchased your unit between 2010 and Oct. 2020.

HT150-2

If you purchased your unit after Oct. 2020.



2000 & 4000 Series Valve Seal 3 Pack

Provides replacement valve seals for AirSpade 2000 and 4000 series handles. **HT66**



3000 Series Supersonic Nozzle

Featured exclusively on AirSpade 3000 air-excavation tools, the Supersonic Nozzle delivers superior performance vs competitive nozzles, or open pipes. Proprietary design turns compressed air into high speed, laser like jet moving at Mach 2 twice the speed of sound. The result is faster and more efficient excavation, uncovering underground utility lines, pipes, hazardous material containers, or even sensitive tree roots without harm. Mounts on standard AirSpade 3000 barrel. Stainless steel. Male threaded connection. **LT24**



3000 Series Handle Assembly

Handle assembly for AirSpade 3000. Inline handle provides superior grip. Rugged, brass/aluminum/steel construction. Dead-man trigger ensures safe operation. Outlet: Female threaded connection. **LT03**



4000 Series Handle Repair Kit

Provides all of the parts necessary to maintain and/or repair the Utility AirSpade 4000 handle. **ASU4000HR**



4000 Series Supersonic Nozzle

Featured exclusively on AirSpade air-excavation tools, the Supersonic Nozzle delivers superior performance vs. competitive nozzles, or open pipes. Proprietary design turns compressed air into high speed, laser-like jet moving at twice the speed of sound – Mach 2. The result is faster and more efficient excavation, uncovering underground utility lines, and pipes, or even sensitive tree roots without harm. Non-sparking bronze construction. Compatible with all AirSpade 4000 components and accessories. Female threaded connection.

Part #	Nozzle
ASU4105NZ	105 cfm
ASU4150NZ	150 cfm
ASU4225NZ	225 cfm



4000 Series Barrel Extension Coupler

Non-sparking brass coupler provides secure connection between AirSpade 4000 barrels and extensions. Compatible with all AirSpade 4000 components and accessories. Dual, female threaded connections. **ASU4000CP**



4000 Series Handle Assembly

With its innovative design, the Utility AirSpade 4000 Handle Assembly sets a new standard for utility worker safety and comfort. Rugged, lightweight aluminum body and comfortable, ergonomic grip minimizes fatigue. Full size grip opening accommodates linesman's gloves. Dead-man trigger ensures safe operation. Trigger guard prevents accidental activation. Retractable handle provides superior operator control. Integral pressure gauge ensures optimal digging performance. Outlet: Female threaded connections. **ASU4000HA**



Lightweight Vacuum Hose Assembly

Rugged, flexible 4" ID x 15' flexible vacuum hose provides the ideal combination of lightweight, flexibility, and durability. Smooth internal wall for increased airflow. Transparent construction allows for visual confirmation of material flow. Includes hose clamps.

AVH4015LW



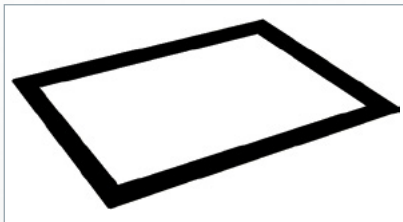
AirSpade Vac Replacement Exhaust Bag

Replacement exhaust bag for AirSpade Vac. Filters dust particles from exhaust air stream. Includes hose clamp. **AV165EB**



AirSpade Vacuum Wand

Rigid, clear polycarbonate, 4" OD x 4' vacuum wand. Length can be trimmed for custom applications. Attaches to vacuum hose via standard hose clamps (not included). **AVW4005**



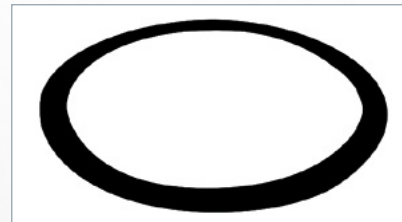
AirSpade Vac Replacement Door Gasket

Replacement door gasket for AirSpade Vac. Creates an airtight seal between dump door and container to keep your AirSpade Vac running at its full potential. Constructed of EPDM foam. **AV165DG**



AirSpade Vac Replacement Engine Gasket

Replacement engine gasket for AirSpade Vac. Creates an airtight seal between engine assembly and lid to keep your AirSpade Vac running at its full potential. Constructed of EPDM foam. **AV165EG**



AirSpade Vac Replacement Lid Gasket

Replacement lid gasket for AirSpade Vac. Creates an airtight seal between lid and container to keep your AirSpade Vac running at its full potential. Constructed of EPDM foam. **AV165LG**



AirSpade Vac Replacement Valve Assembly

Replacement valve assembly for AirSpade Vac. Mounts under venturi vacuum engine. **AV165VA**





FAQs

GENERAL

How can I purchase AirSpade products?

AirSpade products can be purchased direct or through our distributors. Contact our Inside Sales Department, via email at info@airspade.com. A list of AirSpade distributors can be found on the Where To Buy section of the AirSpade website airspade.com. You can also buy direct at airspade.com.

How do I obtain current product pricing and availability?

Product pricing and availability can be obtained by contacting the AirSpade Inside Sales Department or on our airspade.com website.

How can I obtain current AirSpade product literature?

Product literature can be viewed or downloaded via the Support/Literature And Manuals section of the airspade.com website.

TECHNICAL

How does AirSpade work?

The proprietary Supersonic Nozzle in the AirSpade turns compressed air into a high-speed, laser-like jet moving at twice the speed of sound; Mach 2. All of the energy and momentum of this air moving at approximately 1,200 mph is focused on the soil, dislodging it in a fraction of a second. Soil is an unconsolidated assemblage of solid particles that may or may not contain organic matter. The voids between the particles are occupied by air and/or water. The aggregate nature of soil aids the ability of the compressed air to fracture it; while stronger materials and ones that are not porous like metal or plastic pipes, cables, or even tree roots remain unaffected.

What size air compressor do I need to properly run my AirSpade?

Tow-behind air compressors typically have model numbers that nominally describe their air capacity measured in cubic feet per minute (cfm) at a pressure of 100 pounds per square inch (psi). For example, a “185 compressor” delivers 185 cfm at 100 psi. AirSpade nozzles are designed to optimally operate at 90 psi and are designated by the volume of air delivered at 90 psi. Six nozzle sizes are available to cover the size range of most tow-behind compressors.

AirSpade Recommended Compressor Size

Nozzle Size (scfm)	Minimum Compressor* (hp)	Compressor Size (cfm)
25	6	110
60	13	110
105	23	185
150	33	185
225	50	250
330	73	400

*Estimate based on 4.5 hp per scfm.

What size air compressor do I need to properly run my AirSpade Vac?

The minimum compressor needed is 37 hp and the compressor size is 185 cfm.

Will adjusting my compressor to deliver a higher pressure make the AirSpade work better?

No! AirSpade nozzles are designed to operate optimally at 90 psi. Supplying higher pressure to a Supersonic Nozzle that has been optimized for 90 psi actually defocuses the air-jet, thus degrading performance while dramatically increasing air consumption.

What size air hose do I need for my AirSpade?

Compressed air flowing through a hose experiences a pressure loss from constrictions and friction proportional to the length of the hose. Air volume, operating pressure, hose ID and smoothness also determine the loss. For more information on air hose pressure loss visit our website. Generally speaking, air hose of at least 1" ID is recommended for most AirSpade applications. The AirSpade 3000 requires a minimum air hose ID of 1.25". To ensure satisfactory digging performance, air hose can always be sized larger than required, but not smaller.

		Pressure Loss (psig)				
		Air Flow/Nozzle Size (scfm)				
		25	60	105	150	225
Hose ID	3/4"	0.3	1.6	5.6	12.3	25.0
	1"	0.1	0.4	1.3	2.8	5.5
	1 1/4"	0.0	0.1	0.4	0.8	2.0

What about connectors and fittings?

Be sure that fittings and/or connectors do not restrict the air flow in any manner. Use fittings that are rated the same size, or larger, for a given air line size. We recommend the use of Chicago style "Air King" fittings, used in conjunction with safety pins.

In what types of soils does AirSpade work?

Because of its unique, focused air-jet, the AirSpade is effective in virtually all soils and even hard clays. In general, the AirSpade will not cut through rock. However, shale may be broken apart by the AirSpade if the jet is directed between the laminations of the rock. Similarly, the AirSpade will not dislodge hard, frozen soil that tends to behave like pavement or concrete.

Can I use the AirSpade for digging in clay?

Tests show the AirSpade to be effective in compacted soils with unconfined compressive strengths well above the values listed for hard clay.

What is the best way to dig with the AirSpade?

The AirSpade effectively digs up to several inches deep in medium to stiff soil. Unless the soil is highly compacted, dwelling on the same spot is unnecessary and tends to increase spray. Ideally, the AirSpade should be moved over the soil surface at a rate of about 1' to 2' per second. When several inches of soil have been loosened, the soil should be removed to expose a fresh working face for the air jet. Watering the work area ahead of time can sometimes be helpful. Water reduces soil strength thus making digging easier. Water also reduces airborne dust if the soil is extremely dry. Combining the use of the AirSpade with a low-pressure water source (garden hose) can aid the excavation of highly compacted or sun-baked soils.

What size AirSpade nozzle should I use?

This depends on soil classification and the desired rate of soil excavation. Typical soil excavation rates can be expected for various AirSpade nozzle sizes.

Soil Excavation Rates

Nozzle Size (scfm)	Soil Excavation Rates (cubic ft/ min)
25	0.4 to 0.9
60	0.7 to 1.1
105	0.9 to 1.5
150	1.2 to 1.8
225	1.7 to 2.3
330	2.4 to 3.0

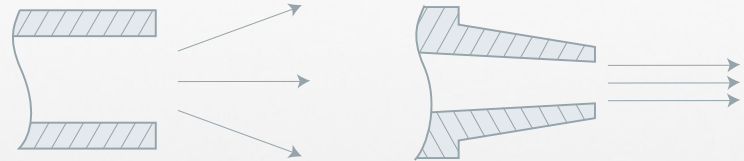
What are the advantages of digging with AirSpade as opposed to high-pressure water?

- Dangerous, high-pressure water jet can easily cut through clothes or work boots.
- High-pressure water can cut through plastic electric or gas lines and/or damage pipe coatings.
- Water increases the volume and weight of soils slated for disposal.
- Mud around job site, provides poor footing, is messy to contain, and often results in wet worker clothing.
- Mud generated from hydro excavation, when dumped onto a given area and dried, does not blend-in and thus secondary operations may be required.
- Water often undermines areas adjacent to the excavation.
- Water is heavy, bulky and poses transportation and storage issues.



Supersonic Nozzle

AirSpade's proprietary Supersonic Nozzle turns compressed air into a high-speed, laser-like jet moving at twice the speed of sound – Mach 2. All of the energy and momentum of air moving at approximately 1,200 mph is focused into the soil – dislodging it in a fraction of a second.



Unfocused air flow from improperly designed nozzle.

Focused air flow from AirSpade Supersonic Nozzle.

Air exiting from an improperly designed nozzle diffuses outward rapidly to 3 to 4 times the area versus the focused air-jet from the AirSpade Supersonic Nozzle. The result is faster, safer, more efficient soil excavation.



SCAN ME

Download your FREE Technical Applications Guide

Learn the ins and outs of utilizing AirSpade for arbor and utility applications.



AXONOMETRIC

3 RADIAL TRENCHING W/ AIRSPADE
1/4" x 1'-0"



AIRSPADE®
Division of Guardair Corporation

47 Veterans Drive • Chicopee, MA 01022-1062
Toll-Free: 800-482-7324 | Local: 413-594-4400 | Fax: 413-594-4884
Email: info@airspade.com • airspade.com

