

*Dishwasher  
User Manual*

***PowerPoint***



**P26PROIN**



# ■ Contents

<b>Safety Warnings</b> .....	<b>1</b>
Safety Information to be Followed While Using the Appliance .....	1
Safety Information to be Followed During Installation .....	5
Water Connections.....	9
Placing the appliance under the counter .....	11
Safety Information to be Followed During Cleaning or Maintenance.....	13
Limitation of Liability.....	14
Technical Specifications .....	15
<b>General Appearance</b> .....	<b>16</b>
<b>Before First Use</b> .....	<b>17</b>
Preparing The Machine For Use.....	17
Importance of water softening system .....	17
Adjustment of Water Hardness .....	18
Detergent Use .....	19
Filling and Adjusting Rinse Aid.....	21
<b>Placing Dishes into Dishwasher</b> .....	<b>22</b>
Top Basket.....	23
Bottom Basket.....	24
Alternative Basket Placement .....	26
<b>Programme Definition</b> .....	<b>27</b>
<b>Programme Selection and Operating the Machine</b> .....	<b>29</b>
Programme Selection and Operating the Machine .....	29
Programme Monitoring .....	29
Changing-Cancelling the Programme.....	29
Cancelling a Programme .....	30
Switching the Machine Off .....	30
Cleaning and Maintenance.....	31

Filters ..... 31  
Spray Arms ..... 32  
Hose Filter ..... 32  
Troubleshooting ..... 33  
Things To Be Done In Case Of Simple Failures ..... 37

## Safety Information

### Safety Information To Be Followed While Using the Appliance

- Please keep this operation manual with your appliance at all times. Give this manual with your appliance when you lend it to someone.
- Read the operation manual carefully and follow instructions.
- This appliance is designed to be used in workplaces (commercial type).
- Use your appliance according to declared purpose of use. Follow instructions stated in this operation manual.
- **WARNING:** Failure to use the appliance according to its purpose of use may cause damage and dangerous conditions and void appliance warranty. User shall pay for damages resulting under these circumstances.
- If your supply cable is not compliant with the socket, supply cable must be replaced by the authorized service to prevent any danger.
- Connect the appliance to AC current and grounded socket. Manufacturer shall not be responsible for damages that may result from usage without grounding.
- Make sure grounding line in electricity socket of your appliance and electricity leakage protection circuit are in good condition to prevent a potential electric shock.
- Check the electricity cable for damages regularly. Do not force the power cable of the appliance by pulling. Do not put any items onto the power cable.
- Make sure that electricity supply cable is not crushed under the appliance.
- If power cable is damaged, it must be replaced by an authorized service recommended by the manufacturer to prevent any dangers. Please contact an authorized service or customer contact centre.
- Do not use your appliance in the following situations:
  - If the appliance, plug or power

cable is damaged,

-If the appliance is dropped, it has signs of visible damage or it does not work properly,

-If the appliance and electrical parts are visibly damaged,

-If the appliance is wet, dropped in water or other liquids, subjected to flood and if its electrical parts contact water,

-If a strange noise, smoke or odour is observed.

If one of the above conditions is detected, turn off your device, disconnect the power immediately and contact an authorized service. A damaged appliance or its parts can cause severe injuries or fire.

- If your appliance has any malfunction, do not attempt to repair the appliance yourself. Do not dismantle the appliance, it can result in the risk of electric shock when using if it is installed in a wrong way. The appliance has no parts that can be repaired by the user.
- Switch off the fuse or unplug the appliance before any repairs on the appliance. Turn off the water tap.

- Using accessories and replacement parts not recommended by the manufacturer may cause appliance damage and injuries
- This appliance can be used by children at the age of 8 or above and people with limited physical, hearing or mental abilities or experience and knowledge only when they are supervised or when relevant instructions are provided and the dangers are understood.
- Children should not be allowed to play with the appliance. Do not allow children to run the dishwasher.
- Cleaning and user maintenance should not be performed by children without supervision.
- Keep detergent and rinse aid away from your children.
- Keep your children away from an appliance that is open as there can be cleaning substance residues.
- Make sure old appliances do not pose any risks for children. It is known that children were locked in old appliances

before. Break the lock of your old appliances, cut the power cable and remove the plug from the cable to prevent such situations.

- Do not use your appliance in outdoor and on wet surfaces to prevent electricity shock risks.
- Hold the plug when unplugging your device and pull out. Do not pull the cable.
- The appliance must be supplied by a residual current device (RCD) with a rated residual operation current not exceeding 30 mA.
- Do not use a multiple outlet and extension cord.
- Do not use plugs that are damaged, torn or worn cables. Never pull, bend or damage the cable.
- Do not climb, sit or place loads on the appliance door when it is open.
- Do not plug or unplug the plug with wet hands to avoid electricity shock.

**WARNING:** Packaging is dangerous for children. Store all packing material away from children.

- Check if your appliance or its packaging has damages. Never operate an appliance with any kind of damages. Consult a service immediately.
- Open packaging material as stated and dispose as described in packaging information section.
- Unplug the appliance if it will not be used for a long time.
- Make sure you unplug the appliance and disconnected electricity in following cases:
  - Before installation,
  - Before cleaning and maintenance,
  - Before repairs.
- Do not fill detergent and rinse aid sections with substances other than detergents and rinse aid specifically produced for dishwashers. Otherwise, manufacturer will not be responsible for any damages that may occur on your appliance.
- Water in washing part is not drinking water. Do not drink.
- Do not place solvent chemicals in the washing section of

- your appliance as there is a risk for explosion.
- Before washing plastic objects in your appliance, check if they are suitable for washing in dishwashers.
  - Do not place objects that are not suitable for washing in dishwasher in your appliance. Also, do not exceed the capacities of baskets. Otherwise, the manufacturer will not be responsible for scratches and corrosion on the internal body of your appliance due to basket movement.
  - When the appliance is running, do not open its door as hot water may splash out. Safety system will stop your appliance if you open the door.
  - Do not leave the door of your appliance open. Leaving the door open may cause accidents.
  - Do not install other appliances emitting heat such as stove on or near the appliance. Heat emitted from the stove or similar appliances may damage the dishwasher.
  - Place dishes such as bowls, glasses and pots in the dishwasher with their openings facing down.
  - Do not place different dishes or dishes more than specified in your appliance.
  - For safety reasons, unplug the device when washing programme is over.
  - Your dishwasher cannot be used by people with limited physical and mental abilities, children and people with insufficient knowledge and experience on using the appliance without supervisors that can ensure their safety.
  - Sheet surfaces of the appliance are sensitive. They need to be cleaned with special cleaning substances. Sheet surfaces cleaned with unsuitable cleaners can be scratched, damaged or its appearance may be deformed in time. Use cleaning substances recommended by our Authorized Service to prevent this.
  - If energy saving option is activated, the door will be automatically opened at the end of the



programme. In order not to damage automatic door opening mechanism, do not attempt to close the door for a couple of minutes. The door must be open for 30 min. for an effective drying. (only in products with automatic door opening mechanism.)

**WARNING:** Do not stand in front of the door after hearing automatic door opening signal.

### **Safety Information to be Followed During Installation**

- Installation and repair procedures must always be performed by an Authorized Service. Manufacturer will not be responsible for damages that can result due to procedures performed by unauthorized people. Power plug must be easily accessible after installation.
- You can call the call centre before starting to use your appliance to reach the closest authorized service and request assistance for installation, operation and usage of your device.
- Select a suitable, safe and level spot for the installation.
- Make sure appliance installation and electricity-water connections are performed in line with instructions.
- Consult an expert electrician to make sure that the fuse system in your house is in compliance with regulations.
- The appliance must only be connected and operated in accordance with details on type plate. Check if the voltage value of your electricity network is compliant with the value stated on rated value plate of the appliance before using the appliance.
- Manufacturer will not be responsible for any damages that may result due to unsuitable connections, failure to provide grounding.
- Never use extension cables or multiple sockets for the connection of your appliance to electricity network. These connections may result in overheating.
- Connection between building grounding line and grounding screw supplied with the appliance must be performed by

a qualified electrician using a 10 mm grounding cable to be purchased by the customer.

- The location of the screw where grounding cable need to be connected is shown with a yellow grounding label behind the appliance.

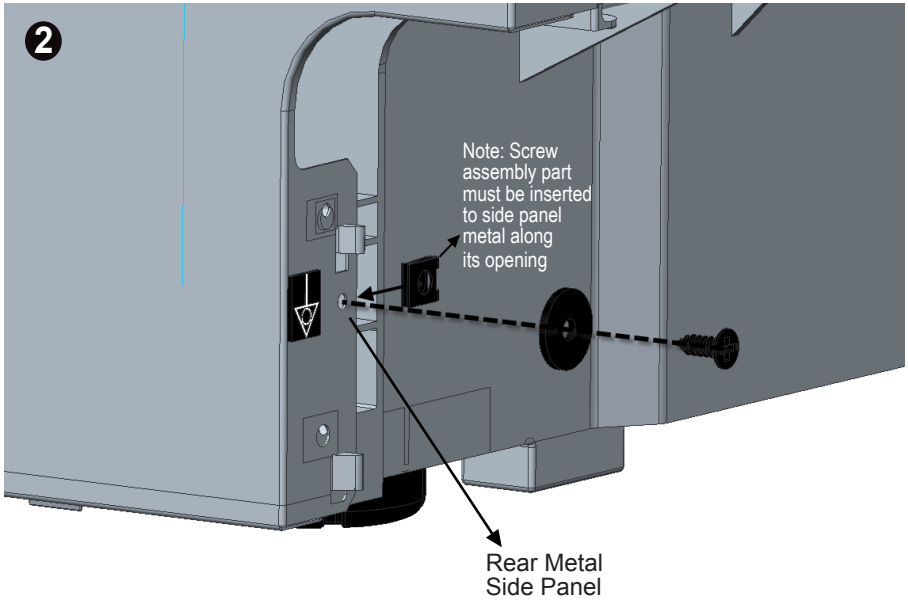
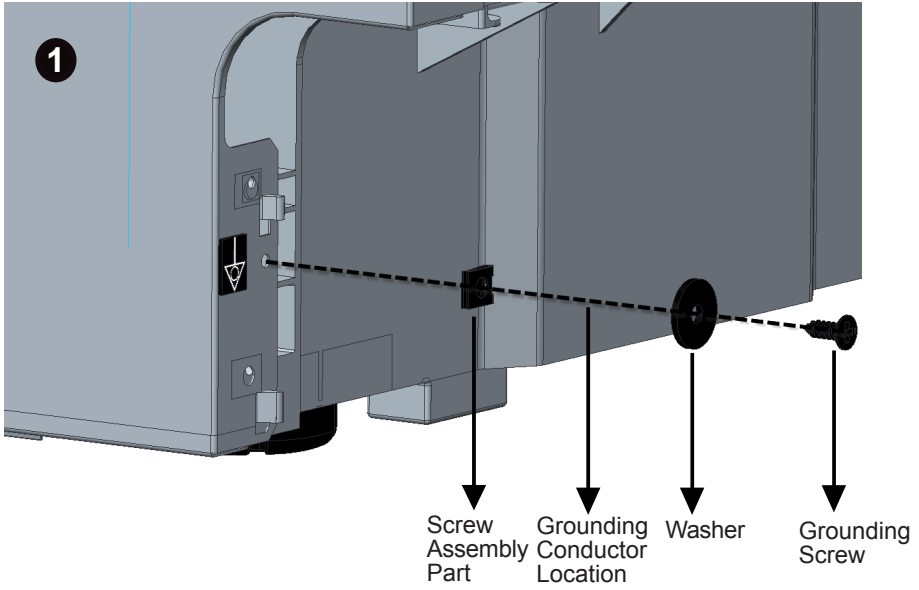
The screw to be attached to the location indicated with a yellow label during grounding



is supplied with the product. Use this screw supplied with the appliance for grounding.

- The screw includes additional assembly parts (will be also supplied with product)

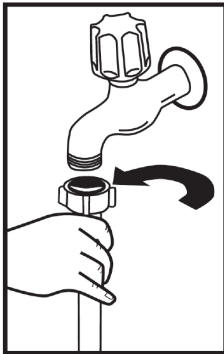
- for ground connection. When a qualified technician make grounding , inserting of additional assembly parts and screw must be follow sequence as seen in first picture below.
- Screw assembly part must be inserted into rear panel metal along its opening side. Rear panel metal part must be stay between two leads of screw assembly part. In second picture related assembly for screw assembly part can be seen.
- Fuse current value in your house must be 10-16 Amps.



- Your appliance is set to 220 – 240 Volts. If mains voltage in your area is 110 Volts, have a 110/220 Volts and 3000 Watts transformer on the line. The appliance must not be plugged during installation.
- Always use the covered plug supplied with the appliance.
- Washing efficiency of your appliance will decrease in low voltage.
- While determining the location to install your appliance, make sure it is a location where you can load and unload your dishes after washing easily. make sure that the power cable does not get stuck under the appliance.
- Do not install your appliance in spaces where temperature might get below 0°C.
- Run your appliance empty for the first time after installing it in a suitable place.
- This appliance cannot be used outdoors and left in the rain.
- Remove appliance from its packaging before installation
- following instructions on the packaging.
- Place the appliance close to tap and waste water pipe. Consider that the location cannot be changed after connections are made.
- Do not hold the door or control panel to move the appliance.
- Make sure there are sufficient gaps around the appliance to easily move the appliance forward-backward during cleaning.
- Make sure water inlet-outlet hoses do not get crushed when placing the appliance. Also, make sure that the power cable does not get stuck under the appliance.
- Adjust the feet for the appliance to be level and stable. Door can be opened and closed with not problems when the appliance is installed correctly.
- If the appliance door cannot be closed correctly, check if the surface the appliance is on is flat and make sure the appliance is level by adjusting.

## Water Connections

- Make sure that plumbing in your house is compliant with the dishwasher. We recommend you to install a filter to the entrance of your house or building to prevent damage to appliance by contamination (sand, clay, rust, etc.) that may come from city mains or plumbing at times and avoid complaints such as yellowing, sediment, etc. as a result of washing.



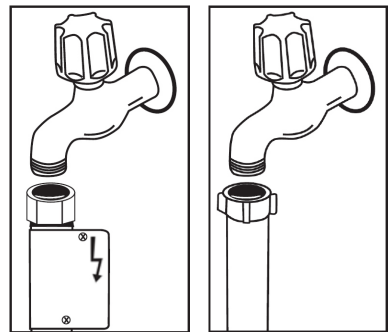
## Water Inlet Hose

- Do not use the water inlet hose of your previous appliance (if any). Use the new water inlet hose instead supplied with your appliance.
- Run some water inside the hose if your are going to use a new hose or a hose not used

for a long time.

- Connect the water inlet hose directly to water inlet tap.
- Pressure from the tap must be at least 0.03 MPa (0.3 bar), and maximum 1 MPa (10 bar). If water pressure is above 1 MPa (10 bar), use a pressure reduction valve in between.
- Open the tap completely to check water tightness after making all connections.
- Turn off the inlet tap after each washing programme for the safety of your appliance.

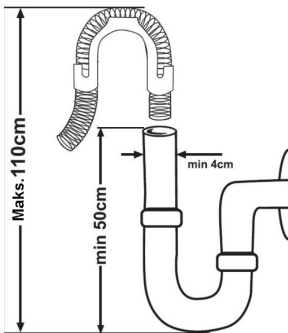
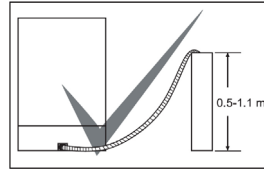
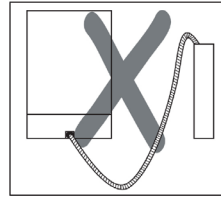
**NOTE:**Secure hoses are used in some models. Secure hoses include dangerous voltage. Do not cut secure hoses. Do not bend or twist them.



## Water Discharging Hose

Water discharging hose can be directly connected to waste water line or waste water hose of the sink. A specially twisted elbow (if any) can be used to attach the hose to the edge of the sink to directly discharge into the sink.

This connection must be min. 50 cm and max. 110 cm higher than the floor.



**WARNING:** Do not use a discharge hose longer than 4m. This might prevent sufficient cleaning for your dishes. Manufacturer will not accept any responsibility in this case.

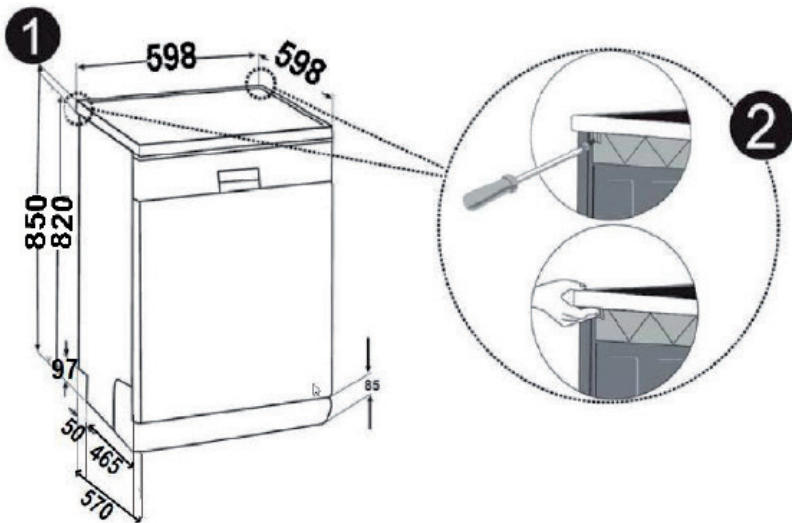
## Placing the appliance under the counter

If you want to place the appliance under the counter, check if the space under the counter is sufficient for the appliance and electricity-water installation is suitable.

1. If the space under the counter is suitable for the appliance, remove the top plate of the appliance as shown in the figure.

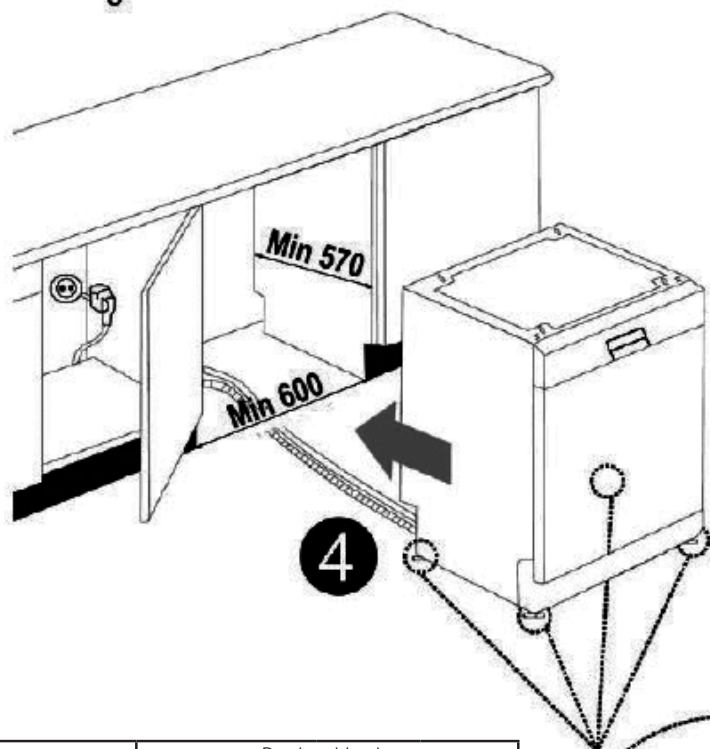
2. In order to remove the top plate, remove top plate screws behind the appliance fixing the top plate, push the top plate from the front towards back for 1cm, lift and remove.

**WARNING:** Counter section that you will place your appliance by removing the top plate must be stable not to allow the appliance to be off balance.

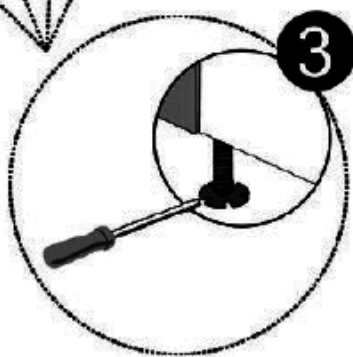


3. Adjust appliance feet according to floor. 4. Push the appliance to place it under the counter by making sure hoses are not bent or twisted.

**WARNING:** Store the top plate in a closed space with dimensions specified in the figure after removing it from the appliance.



	Product Height		
	Without insulation material	With insulation material	
		All products	2 baskets
Height (mm)	820 mm	825 mm	835 mm





## **Safety Information to be Followed During Cleaning or Maintenance**

- Clean your appliance regularly as explained in "Cleaning and Maintenance" chapter. Unplug the appliance and close the tap before starting maintenance and cleaning.



**WARNING:** Do not wash the appliance with pressurized water. Do not use abrasive substances while cleaning.

## **Safety Information to be Followed During Handling and Transport**

- The appliance must be in its original packaging during handling and transport to prevent damage to its components.
- Keep the appliance in normal position during transport.
- Do not drop the appliance and protect it against impacts during transport.
- Failures and damages resulting during handling after delivering the product to customer

are not covered by the warranty.

- If you need to carry the product, keep it in upright position and hold the back side. Tilting the appliance forward may cause electronic parts to get wet and damaged.
- Before you move the product, unplug the power plug.
- Remove the water outlet and water supply connections.
- Discharge the remaining water in the product completely.

## **Objects Not Suitable For Washing in Dishwasher**

- Cigarette ash, wax residue, wax, oil, paint, dishes with chemicals and steel and iron alloy materials.
- Wood or bone handle ivory, pearl coated, forks, spoons, knives, glued parts and abrasive, acidic or alkaline chemicals and contaminated parts.
- Aluminium and silver materials (matting and discolouring may result.)

- Some types of sensitive glass, porcelain with decorative prints, crystals, non-heat-resistant adhesive forks and knives, lead crystal glasses, kitchen boards, objects manufactured with synthetic fibre .
- Objects with absorbing properties such as sponge or cloth cannot be washed in dishwasher.
- **WARNING:** Make sure dinnerware (plates, etc.) that you will buy in the future are suitable for washing in the dishwasher.
- Objects with absorbing properties such as sponge or cloth cannot be washed in dishwasher.

**WARNING:** Make sure dinnerware (plates, etc.) that you will buy in the future are suitable for washing in the dishwasher.

## Limitation of Liability

All technical information, operating instructions, operation and maintenance of the device in this manual contain the latest information about your appliance. Manufacturer will not accept any responsibility for any damages and injuries caused by failure to observe the instructions in this manual, using the appliance outside the purpose of use, unauthorized repair operations, making modifications on the appliance without permission and using replacement parts not approved by the manufacturer.

**Important note for users:** You can access the digital version of this manual via the address below: "dishwasher@standardtest.info". Please add the model name and serial number (20 digits) written on the door of the product in the subject of the e-mail.

# Technical Specifications

Model	P26PROIN
Height	850 mm
Height (Without platform)	820 mm
Width	598 mm
Depth	598 mm
Net Weight	48 Kg
Electrical Input	220–240 V, 50 Hz
Total Power	2200 W
Heater Power	2000 W
Pump Power	100 W
Drain Pump Power	30 W
Water Pressure	30 KPa (0.3 bar) - 1000 KPa (10 bar)
Current	10 A
Noise Level LwA	54 dB (A)
Noise Level LpA	43 dB (A)

- Manufacturer reserves the right to make changes in design or technical specifications.

## Compatibility with Standards and Test data / EU Declaration of Conformity



This product has relevant compliant standards granting CE marking and meets all applicable EU directives.



It is in compliance with WEEE Regulation.



## General Appearance



- |                       |                      |
|-----------------------|----------------------|
| 1. Top Basket         | 9. Filters           |
| 2. Top Basket Rail    | 10. Bottom Basket    |
| 3. Middle Basket      | 11. Lower spray arm  |
| 4. Middle Basket Rail | 12. Middle spray arm |
| 5. Salt Container     | 13. Upper spray arm  |
| 6. Detergent Box      | 14. Cutlery Basket   |
| 7. Door               |                      |
| 8. Control Panel      |                      |

This image is only for informational purposes about the appliance's parts. Parts may be different according to the model of the appliance. Images are representative.

## Before First Use

- Check if electricity and supply water properties are in compliance with values specified in the installation instructions.
- Remove all packaging material in the appliance.
- Adjust the amount of softener according to the hardness of the water.
- Add 1 kg of salt and water in the salt container till it overflows.
- Fill the rinse aid container.

## Preparing The Machine For Use

### Importance of water softening system

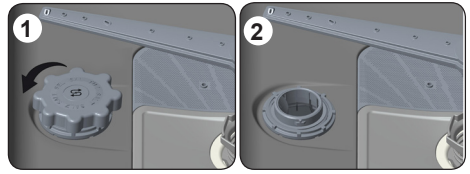
For a good washing function, your dishwasher needs soft water, i.e. water with less lime. Otherwise white lime deposits will be observed on internal components of your appliance or on your dishes.

This will negatively affect the washing, drying and rinsing performance of your appliance. Water is cleaned of ions causing hardness when they pass through the system and water reaches the softness required for best washing result. Depending on hardness of inlet water, ions causing this hardness accumulate in water softener system quickly. Therefore, softener system must be cleaned to get the same performance in the next wash. Dishwasher salt is used for this purpose.

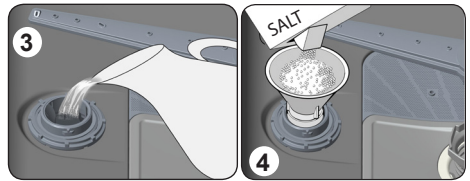
### Filling Salt

Use special softening salt in your machine produced just for use in dishwashers. Remove the bottom basket to fill softening salt.

Remove the salt container cap by turning it counter-clockwise ( Picture 1 and 2 ).














Fill the container with 1 kg salt and water until it overflows in the first use ( picture 3). You can use a salt cone for an easier filling ( picture 4) Replace the cap and close it tightly by turning.



If insufficient salt warning lamp on the control panel is lit, add salt in the container. Fill the salt container with water just for the first use. It is recommended to use powder softening salt or salt with small granules. Do not use food salt in your appliance. Otherwise, softener container may lose its function with time. When you run your dishwasher, salt container and internal container are filled with water. Therefore, fill the softening salt before starting the dishwasher. If you are not going to wash right away, run a short wash programme when the appliance is empty to prevent damage to appliance due to excessive salt remaining from filling (to prevent corrosion).

## Test Strip

Washing efficiency of the appliance depends on the softness of washing water. Therefore, your appliance has a system to decrease the hardness of the mains water. Washing efficiency will increase if the system is set correctly. Find out the hardness of mains water by using the test strip (if available) to set the system.

Open test strip.	Flow water from your tap for 1 min.	Hold the test strip under the water for 1 sec.	Shake the strip after taking it off the water.	Wait for 1 min.	Adjust the appliance hardness level according to test strip result.		
					Level 1		No Lime
					Level 2		Very low lime content
					Level 3		Low lime content
					Level 4		Medium lime content
					Level 5		Lime content
					Level 6		High lime content

## Water Softening Adjustment

### Water Hardness Level Adjustment Chart

Water hardness degree	German hardness dH	French hardness dF	British hardness dE	Water hardness indicator
1	0-5	0-9	0-6	Led1 (P1) indicator on.
2	6-11	10-20	7-14	Led2 (P2) indicator on.
3	12-17	21-30	15-21	Led3 (P3) indicator on.
4	18-22	31-40	22-28	Led4 (P4) indicator on.
5	23-31	41-55	29-39	Led1-Led4 (P1-P4) indicators on.
6th	32-50	56-90	40-63	Led2-Led4 (P2-P4) indicators on.

If hardness of water you use is more than 90 dF (French hardness) or you are using well water, it is recommended to use a filter and water purification devices.

**NOTE:** Water hardness level is set to **3** as factory setting.

In accordance with the level determined on the test strip, perform the water hardness adjustment of your appliance.



- Press and hold program selection key when the appliance is not running. **(3)**
- Press On/Off key to power the appliance. **(1)**
- Press and hold program selection key until “P1 – P2 – P3 – P4 End” indicators flash. **(3)**
- After “P1 – P2 – P3 – P4 End” indicators **(2)** flash, release program selection key. **(3)**

The machine will display the most recent water hardness setting.

Press programme selection key **(3)** to adjust levels according to the chart above (Water Hardness Level Adjustment Chart).

After selecting the water hardness level, store the selected setting in memory by pressing on/off key. **(1)**

## Detergent Use

Use detergents produced just for dishwashers.

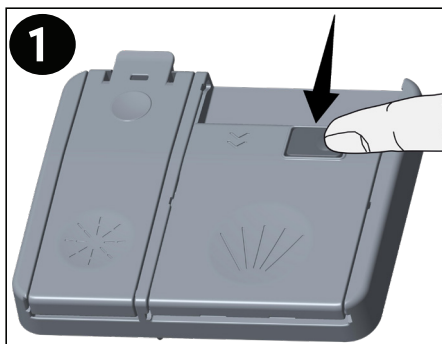
Powder, liquid and tablet detergents are available in the market produced specially for your dishwasher.

Detergent must be filled in the container before running the appliance. Store detergents in a cool and dry place with their packaging closed away from children. Do not fill detergent container with detergent more than required. This can cause scratches on glasses and prevent complete dissolution of the detergent. If you require more information about the detergent to be used, consult detergent manufacturers.

## Filling detergent container

Push detergent container latch as shown in the figure. **1**

There are marks inside the detergent container to show levels. Use these marks to measure the right amount of detergent. Detergent container can take 40 cm<sup>3</sup> detergent in total.



Open the detergent container of your dishwasher to fill detergent. Use powder detergent for slightly dirty dishes and in programmes without pre-wash (slightly dirty glasses 19, dirty glasses 29).

Start your appliance by adding 5 cm<sup>3</sup> powder detergent in the container marked with **a** on the container shown in the figure. If your dishes are left for a long time, food residues dried on them and the dishwasher is overloaded (glass 49 and economic programmes) add 25 cm<sup>3</sup> detergent in the container marked with **b** and 5 cm<sup>3</sup> detergent in the container marked with **a** and start your dishwasher.

### Combined detergents

Detergent manufacturers produce combined detergents called 2 in 1, 3 in 1, 5 in 1, etc. 2 in 1 detergents include detergent + salt or rinse aid. Check the functions of the tablet when using 2 in 1 detergents. Other tablet detergents have extra functions such as detergent+rinse aid+salt, etc. In general, combined detergents provide successful result in certain conditions of use. These detergents contain rinse aids and/or salt in pre-determined amounts.

### Things to consider when using these products:

- Check what properties the product you will use have or if it is a combined product.
- Check if the detergent used is suitable for the hardness of the mains water that the appliance is connected to.
- Follow instructions on the packaging when using these products.
- If these detergents are tablets, do not place them inside the dishwasher or in the cutlery basket. Place tablets in detergent section inside detergent container.
- These detergents provide successful re-



sults only for certain uses. If you use this type detergent, you need to consult with detergent manufacturers and find out the appropriate conditions of use.

- These products offer savings in salt and/or rinse aid consumption when usage conditions and machine setting are correct.
- If you cannot achieve successful washing by using 2 in 1 or 3 in 1 detergent (your dishes end up with lime deposits and wet), consult with detergent manufacturers. Appliance warranty does not cover complaints caused by the use of these detergents.

**Recommended type of use;** if you want to achieve better results by using combined detergents, add salt and rinse aid to your appliance, set water hardness and rinse aid settings to lowest (1) level.

**Solubility of detergents produced as various tablets by different manufacturers vary depending on temperature and time. Therefore, it is not recommended to use these detergents in short programmes. It is more suitable to use powder detergents in these programmes.**



**WARNING:** If you experience a problem due to the use of such detergents that you have not experienced before, contact the detergent manufacturer. You can find contact details on packaging. When you give up using combined detergents;

- Fill in salt and rinse aid containers.
- Set water hardness to the highest (6) level and run empty washing.
- Adjust water hardness according to the hardness of the water.
- Make suitable rinse aid setting.

## Filling and Adjusting Rinse Aid

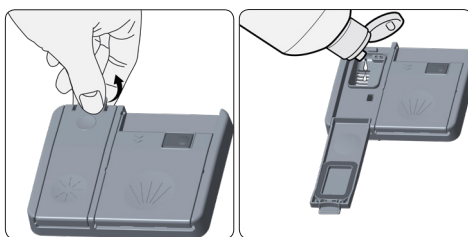
To fill the rinse aid compartment, open the rinse-aid compartment cap. Fill the compartment with rinse aid to the MAX level and then close the cap. Be careful not to overfill the rinse aid compartment and wipe up any spills.

**In order to change the rinse aid level, follow the below steps before turning on the machine:**

- Push the programme button and hold it down.
- Turn on the machine.
- Hold the Programme Button down until all leds blink twice. Rinse aid setting follows water hardness setting.
- The machine will display the current setting.
- Change the level by pushing the programme button.
- Switch off the machine to save the setting.

The factory setting is “4”.

If the dishes are not drying properly or are spotted, increase the level. If blue stains form on your dishes, decrease the level.



Level	Brightener Dose	Indicator
1	Rinse-aid not dispensed	P1 LED is on
2	1 dose is dispensed	P2 LED is on
3	2 doses are dispensed	P3 LED is on
4	3 doses are dispensed	P4 LED is on
5	4 doses are dispensed	P1-P4 LEDs are on

## Placing Dishes into Dishwasher

Placing dishes correctly will allow you to get the best of your appliance in terms of energy consumption, washing and drying performance. Your appliance has two baskets in which you can place your dishes. You can place large and deep parts such as long-handled pots, pot covers, plates, salad plates, cutlery in the lower basket. Top basket is designed for tea plate, dessert plate, salad bowls, cups and glasses. Place glasses with long handles on the edge of the basket and against the rack, not on other objects. Do not lean long glasses on each other. They might be damaged by hitting each other.

It is better to place objects with thin, narrow bodies in the middle of the baskets. Place spoons among forks and knives to prevent them from sticking to each other. Use cutlery grid for the best result. Place long and sharp dishes such as service fork, large knife, etc. with their sharp tips facing down or horizontally on dish baskets to prevent possible injuries.

**WARNING:** Place dishes in the appliance so that they do not prevent rotation of top and bottom spray arms.

## Unloading Washed Dishes

It is recommended to unload the bottom basket first in order to prevent water droplets to fall on dishes on the bottom basket while unloading the dishwasher.

Start unloading the dishwasher when dishes are cool enough so that you can touch after washing program is over.

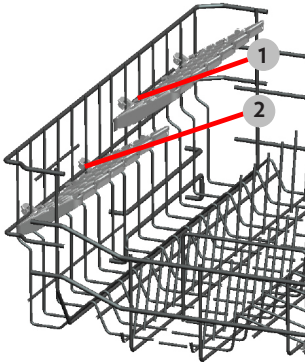
## Top Basket

### Rack with height adjustment

These racks are designed to increase the capacity of top basket. You can place your cups and glasses on these racks. Thanks to adjustable feature of the racks, you can place glasses of different sizes under the racks.

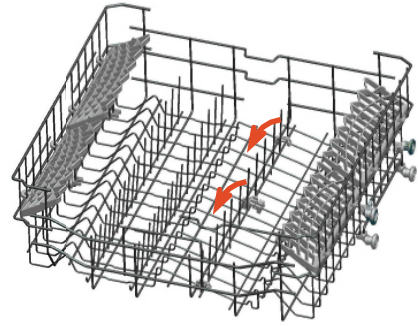
Height adjustment plastics mounted on the basket allow racks to be in 2 different positions.

You can also place long knives, forks and spoons on these racks horizontally for them not to block the movement of spray arms.



### Top basket horizontal wire

Horizontal wire located on top basket allows you to place your plates and bowls when required. Also you can wash kitchenware such as pan or pot by closing the horizontal wires.



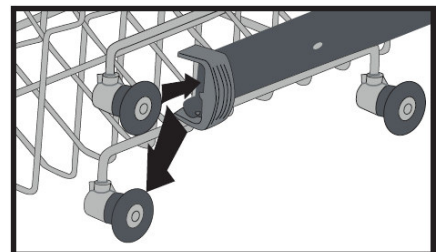
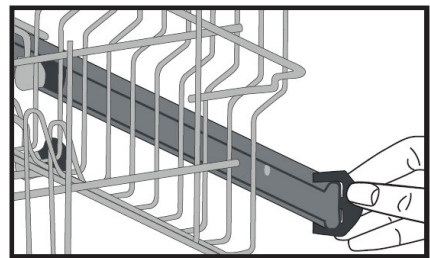
### Adjusting basket height

Upper basket of the appliance is in the upper position. You can place large objects such as pot

in the bottom basket in this position. When you place top basket in the lower position, you can place large plates on top basket.

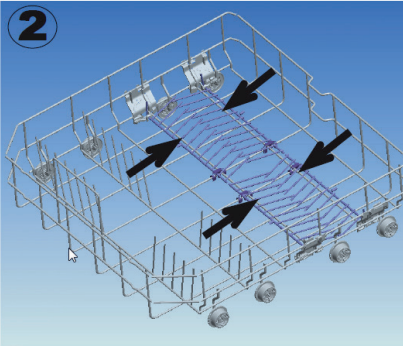
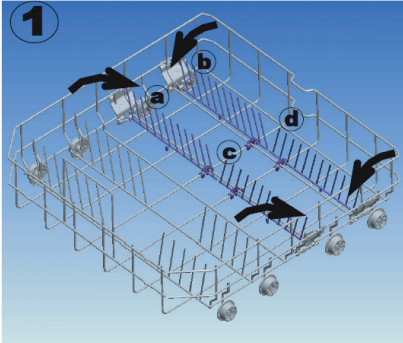
Use the wheels to change the basket height. Open basket fixtures at the end of top basket rails by turning them to the side and take the basket out.

Replace the basket on the rail by changing the wheel position and close the basket fixtures.



## Bottom Basket Folding Wires

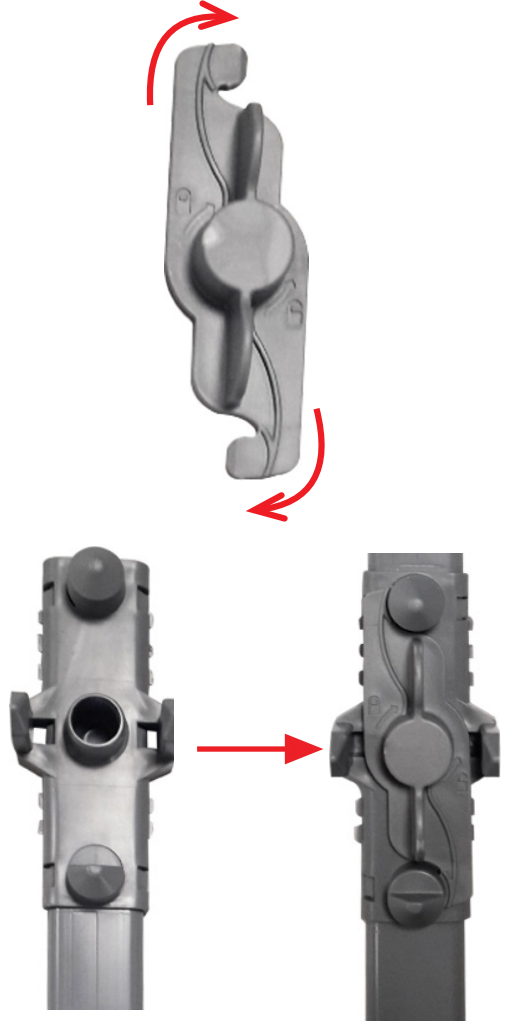
Folding wires consisting of four parts located in the bottom basket are designed for you to place large objects such as pot, bowl, etc. comfortably. You can create large spaces by folding each part one by one or all at once. You can use folding wires by lifting them up or folding them.



## Removing the Middle Basket

Middle basket of your appliance can be removed to wash large dishes such as pot. Turn fixtures at the end of top basket rails to the side to open them, take the basket out and insert the plug part to spray arm hole.

### Plug and Its Use:



The movable cutlery basket can slide between the front and rear wires of the bottom basket.



**Removable Modular Basket System**  
Removable modular basket mechanism is designed to remove the top and middle baskets easily.

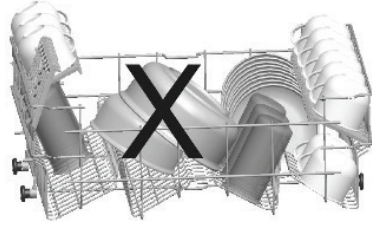
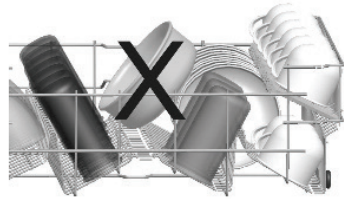
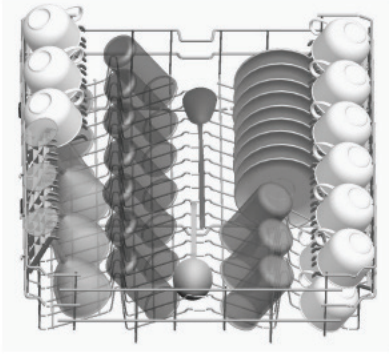


**Cutlery Basket Placement:**  
Cutlery basket must be placed on top basket with its holder closed.

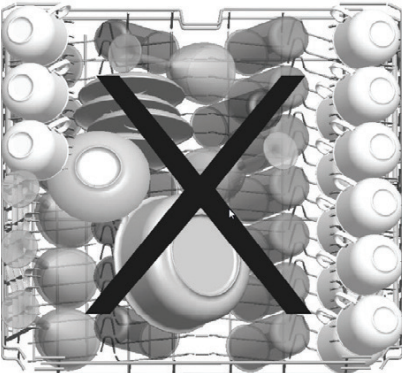


## Alternative Basket Placement

### Top Basket



### Wrong Placements



### Important Note For Test Organizations

For detailed information about performance tests, you can contact us via the e-mail below;

#### **[dishwasher@standardtest.info](mailto:dishwasher@standardtest.info)**

Please include the model name and serial number (20 digits) of the appliance to be tested in your request e-mail. You can find this information on the plate label attached on the side of the door. You can ask for an electronic copy of this manual via the same e-mail above.

## Programme Definition

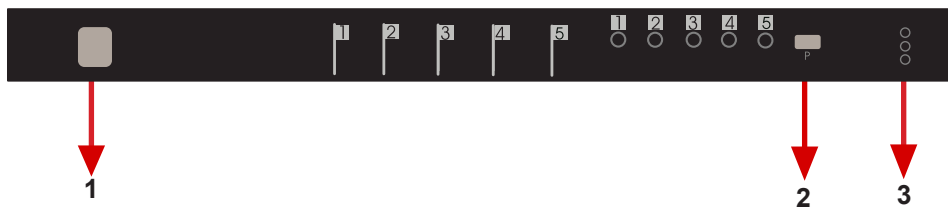
Programme no	1	2	3	4	5 (reference)
Programme name	Jet Glass 14 min	Fast Glass 19 min	Glass 29 min	Super 49 min	Eco
Washing Temperature	30°C	35°C	40°C	65°C	45°C
Dirtiness level	Rinsing programme for clean dishes	Slightly dirty, fresh dishes	Averagely dirty dishes	Averagely dirty dishes kept for a long time	Averagely dirty, fresh dishes
Amount of detergent B:25 cm <sup>3</sup> / A : 5 cm <sup>3</sup>	A	A	A	A+B	A+B
Detergent Type	30°C Washing	35°C Washing	40°C Washing	65°C Washing	45°C Washing
	-	Intermediate Rinsing	Intermediate Rinsing	Intermediate Rinsing	Cold Rinsing
	Warm Rinsing	Warm Rinsing	Warm Rinsing	Warm Rinsing	Warm Rinsing
	End	End	End	End	Drying
					End
Program period (min)	14	19	29	49	187
Electricity consumption (kWh/h)	0.50	0.60	0.90	1.31	1.00
Water consumption (lt)	8.5	12.5 lt	12.4	12.7	12 lt

**WARNINGS:** Short programmes do not include drying step. The values declared above, are values obtained in laboratory according to relevant standards. These values may vary depending on product use and environment (water inlet temperature, water pressure, mains voltage, ambient temperature) conditions.

**\*Average consumption values apply to 15°C water inlet temperature.**

**\*It is recommended to use INTENSE SUPER 49 programme at the end of the day.**

# KNOW YOUR APPLIANCE



## 1. On/Off Button

The appliance is powered when On/Off button is pressed and programme end indicator (3) on the control panel is lit.

## 2. Programme Selection Button

You can select the washing programme suitable for your dishes using programme selection button.

**Note 1:** When every time the machine is powered, economical programme will be selected and the most recent washing programme or feature will be cancelled.

## 3.) Salt Missing Warning Indicator

Check the salt missing warning indicator light on the display to have an idea whether the softening salt in your machine is enough. When salt missing warning indicator is lit, fill the salt compartment.

## Rinse Aid Missing Warning Indicator

Check the rinse aid missing warning indicator light on the display to have an idea whether the amount of the rinse aid in your machine is enough. When rinse aid missing warning indicator is lit, fill the rinse aid compartment.

## Programme End Indicator

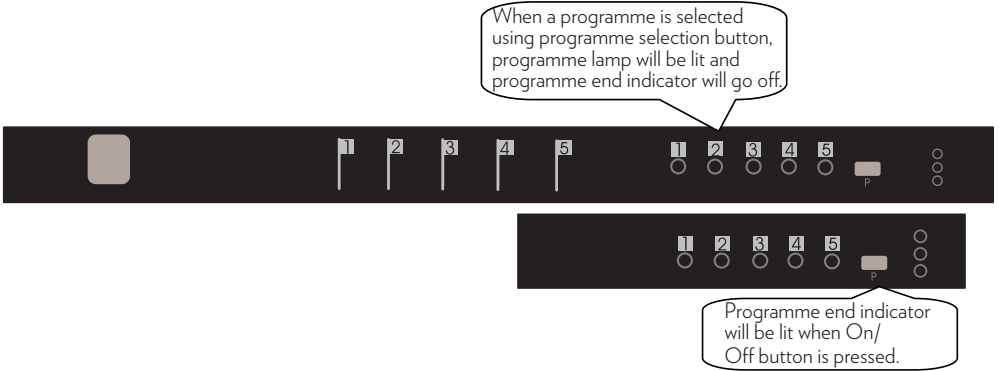
Programme end indicator on the control panel will be lit when the selected washing programme ends.

End of the programme will also be indicated with a signal sound.



# PROGRAMME SELECTION AND OPERATING THE MACHINE

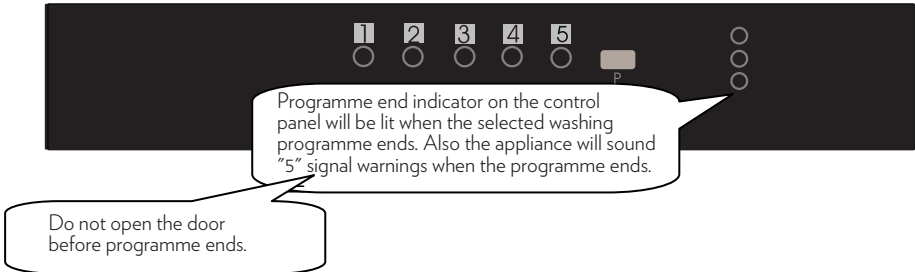
## Operating the Machine



1. Press the On/Off button.
2. You can select the washing programme suitable for your dishes using programme selection button.
3. Close the door of your appliance. Programme automatically starts.

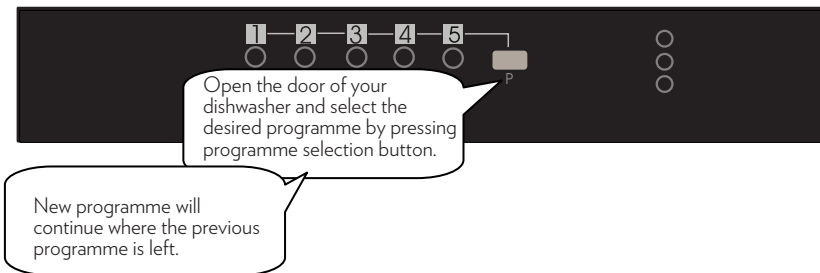
**Note:** If you give up starting the appliance after selecting the programme, simply press on/off button. When you press on/off button again, your appliance will be ready for a new programme selection. Select new programme by pressing programme selection button.

## Programme Monitoring



## Changing the Programme

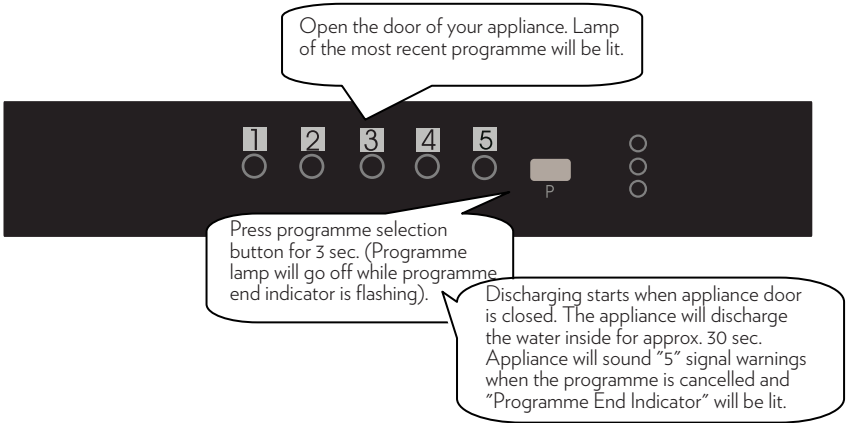
If you would like to change a programme while a washing programme is running on:



**Note:** To end washing half-way through, first open the door slightly to prevent the water from splashing out when the door is opened.

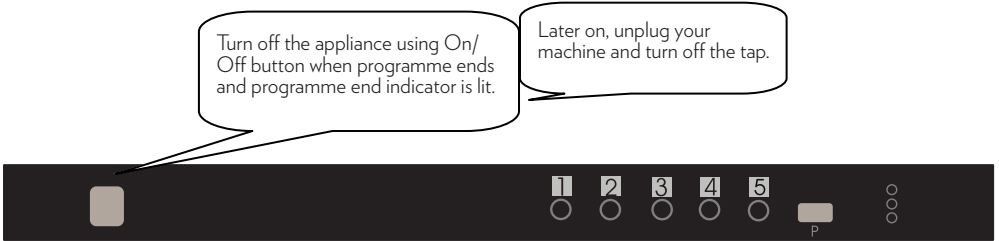
## Cancelling a Programme

If you would like to cancel a programme while a washing programme is running on:



**Note:** To end washing half-way through, first open the door slightly to prevent the water from splashing out when the door is opened.

## Switching the Machine Off



**NOTE 1:** In order for the drying process to be performed more quickly, you may slightly open the machine door after few minutes when the programme has ended and the signal sound is heard (End light has been lit).

**NOTE 2:** If the appliance door is opened or power is disconnected during washing, programme will continue when the door is closed or power is supplied again.

**NOTE 3:** If the power is interrupted or appliance door is opened during the drying process the programme is terminated. And your machine becomes ready for the new programme selection.

## Cleaning and Maintenance

When the appliance is regularly cleaned, its service life will increase and the possibility of frequently experienced problems will be minimized.

Oil and lime may accumulate in the washing area of the appliance. In case of such accumulation,

— Fill the detergent section before placing dishes in the appliance and run the appliance by selecting a high temperature programme. Use special cleaning products available in the market if it is not sufficient. (Special cleaning products produced for these appliances by detergent manufacturers.)

### Cleaning door seals of the appliance

— Wipe the door seals using a damp cloth to clean deposits accumulated on door seals.

### Cleaning the Appliance

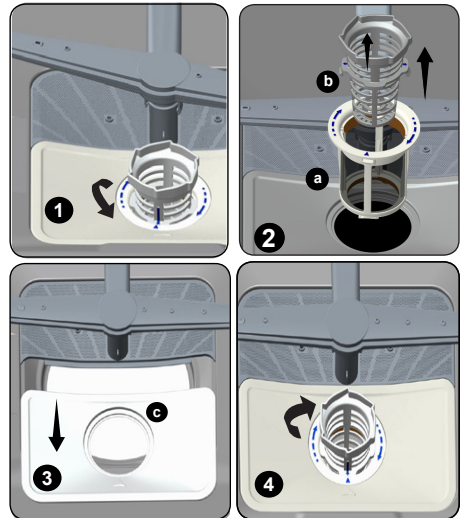
Clean filters and spray arms at least once a week. Unplug your device and close the tap before cleaning your appliance. Do not use abrasive materials (powder detergent, hard sponges) while cleaning your appliance. Wipe using a soft cleaning product and a damp cloth. Use a damp cloth to wipe the control panel.

### Filters

Check if there are food residues on thick and thin filters. If there are food residues, remove filters and wash them under the tap thoroughly.

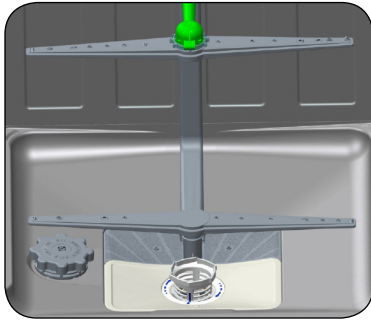
- a. Micro Filter
- b. Coarse Filter
- c. Metal/Plastic Filter

Turn the filter assembly counter-clockwise to remove and clean. (picture 1) Pull and remove metal/plastic filter. (picture 3) Then, pull and remove coarse filter from the inside of micro filter. (picture 2) Wash these three filters under the tap thoroughly. Replace metal/plastic filter. Place the coarse filter inside the micro filter by aligning the marks. Insert the micro filter inside metal/plastic filter, turn it in the direction of the arrow. Micro filter will be locked when the arrow on it is seen when looked straight. (picture 4)



Never use the dishwasher without filters.

- Failure to install filters correctly will reduce the effectiveness of washing.
- Filter cleaning is very important in terms of proper functioning of the appliance.



## Hose Filter

The filter on water inlet hose will prevent contamination (sand, clay, etc.) that may come from city network or your plumbing. Check the filter and the hose regularly and clean if required. Close the tap first and remove the hose to clean the filter. Remove the filter from the hose and clean it under running water. Replace the clean filter in its place in the hose. Replace the hose.

## Spray Arms

Check if top and bottom spray arm holes are clogged. If there is clogging remove spray arms and clean them under running water.

Remove the lower spray arm by pulling it up and the upper spray arm by turning the arm nut left.

When installing the top spray arm, make sure the nut is securely tightened.

## Troubleshooting

When you experience an unusual condition with your appliance, you can try to fix the issue following explanations below. If the problem is continuing, contact the Call Centre. You may access the authorised services list and contact information from the web site.

PROBLEM	CAUSE	SOLUTION
Programme does not start.	Power outage.	Wait for the power to come.
	On/off switch is not on.	Switch on your dishwasher.
	Fuse is burnt.	Replace the fuse.
	It is not plugged in.	Plug in the appliance.
	Appliance door is open.	Close the appliance door.
	Water inlet tap is closed.	Open the water inlet tap.
	Water inlet and appliance filters are clogged.	Clean water inlet and appliance filters.
There is still water in the appliance after programme ends.	Water discharging hose may be clogged or bent.	Clean objects causing the clogging and restart the appliance.
	Filters are clogged.	
	Program has not ended.	Wait for the end of the program.
Detergent residues in detergent container.	Detergent may be placed when the container is still wet.	Dry the detergent container by wiping with a dry cloth.

<b>PROBLEM</b>	<b>CAUSE</b>	<b>SOLUTION</b>
Vibration and impact sounds during washing.	Dishes are not placed correctly.	Place dishes correctly.
	Spray arm hits dishes.	
	Spray arms may not be installed.	Install spray arms.
There are food residues on dishes.	Sprayed water does not reach these areas.	Place dishes properly for them not to block each other.
	Dishes are leaning against each other.	
	Dishwasher basket is overloaded.	Place dishes properly, remove excessive dishes.
	Filters are clogged.	Open the filters by cleaning.
	Filters are not installed properly.	Install filters properly.
	Water discharge pump may be clogged.	Consult a service agent.
	Too little detergent.	Put the amount of detergent specified in the manual.
	Unsuitable detergent is used.	Use a different detergent brand.
	Spray arm is clogged with food residues.	Clean the spray arm.
An unsuitable, insufficient wash program is selected.	Select the programme suitable for your dishes referring to programme chapter in the manual.	

<b>PROBLEM</b>	<b>CAUSE</b>	<b>SOLUTION</b>
Appliance stops during washing.	Power cut.	Wait for the power to come.
	Program may be in standby mode.	Start the program by cancelling the standby mode.
	Problem in water inlet.	Check if water hose is clogged, clean the clogging.
Dishes have whitish spots.	Too little detergent.	Use required amount of detergent.
	Rinse aid setting is too low.	Increase rinse aid setting.
	Special salt is not used although water hardness is high.	Fill the appliance with salt produced specially for your dishwasher.
	Salt section cover is not closed.	Close the salt section cover. Make sure it is closed properly.
Dishes do not dry.	A programme with no drying process is selected.	Check the programme chapter in the manual and select a programme with drying process.
	Rinse aid dose is too low.	Increase rinse aid setting.







<b>PROBLEM</b>	<b>CAUSE</b>	<b>SOLUTION</b>
Dishes have rust marks.	Mains grounding is not proper.	Have an electrician check your mains grounding.
	Dishes have low stainless steel quality.	Make sure kitchenware used in the dishwasher have sufficient stainless steel quality.
	Washing water salt level is high.	Lower value of salt setting.
	Salt section cover is not closed.	Close the salt section cover. Make sure it is tightly closed.
	Salt might be overflowed inside the appliance during filling.	Make sure salt does not overflow during filling. Clean the excessive salt by wiping with a cloth.



## Things To Be Done In Case Of Simple Failures

Your appliance will report the cause of the error as an error code if it is in failure mode. Error codes will be displayed on the screen of your appliance. Following chart shows these error codes, their definitions and points to be checked.

ERROR CODE					ERROR DESCRIPTION	CONTROL
P1	P2	P3	P4	P5		
	☀	☀			Inadequate water supply	Make sure the water input tap is totally open and that there is no water cut.
						Close the water input tap, separate the water input hose from the tap and clean the filter at the connection end of the hose.
						Restart your machine, contact the service if the error resumes.
		☀		☀	Error of continuous water input	Close the tap.
						Contact service.
			☀	☀	The waste water in the machine cannot be discharged.	Water discharge hose is clogged.
						The filters of your machine might be clogged.
						Power off-on your machine and activate the program cancellation command.
						If the error continues, contact for service.

P1	P2	P3	P4	P5		
					Alarm is active against water overflow	Power off your machine and close the tap.
						Contact service.
					Faulty electronic card	Contact service.

## Product Information Slip

Manufacturer's name or trademark	POWERPOINT
Product Model	P26PROIN
Energy efficiency class	A+
Annual energy consumption (AEC) (kWh/year) *	285
Standard cleaning cycle energy consumption (Et)	1.00
Off mode power consumption (W)	0.50
On mode power consumption (W)	1.00
Annual water consumption (AWC) (l/year) **	3360
Drying efficiency class ***	A
Standard program name ****	Economical 50°C
Standard program duration (min)	187
Noise Level LwA	54 dB (A)
Noise Level LpA	43 dB (A)

\* Calculated based on 280 standard cleaning cycles in cold water and energy consumption in low power modes is **285** kWh/year. Actual energy consumption may vary according to the use of the appliance.

\*\* Annual water consumption calculated based on 280 standard cleaning cycles is **3360** litres. Actual water consumption may vary depending on the use of the appliance.

\*\*\* Drying efficiency class is within the range from A, G (lowest efficiency) to A (most efficient).

\*\*\*\* Economical 50°C programme is suitable to clean averagely dirty kitchenware and it is the most efficient programme with combined energy and water consumption.

