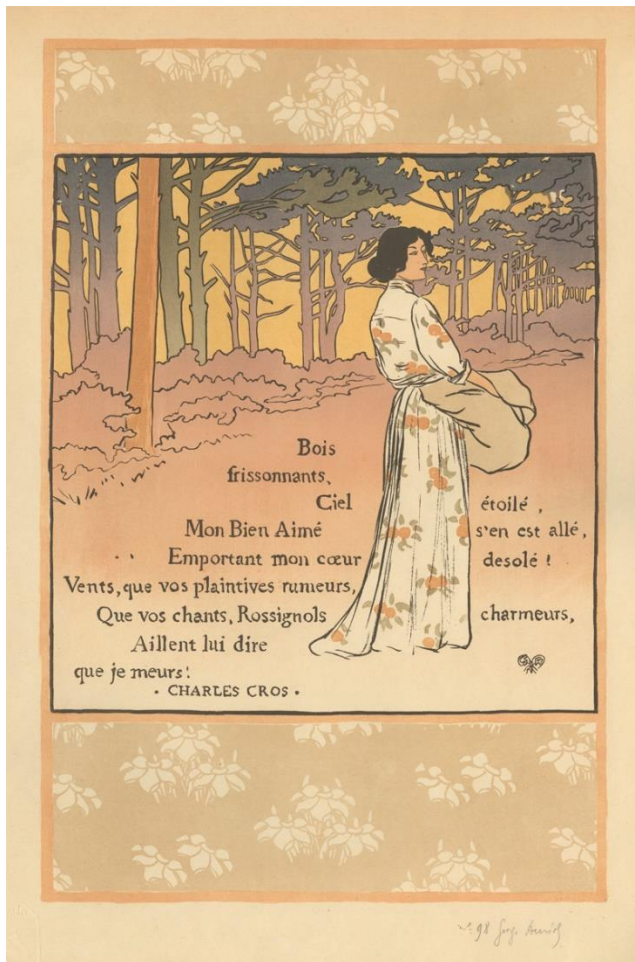


L'Estampe Originale: Album II



Georges AURIOL

(Beauvais, April 26, 1863 – Paris, February 2, 1938)

Bois Frissonnants

Trembling Woods(English title)

Color lithograph printed on wove paper, 1893.

References: Stein & Karshan 2; Boyer & Cate 2.

Plate number 11 from *L'Estampe Originale*.

Signed and numbered in pencil.

Image size: 19 ½ x 12 ¾ inches.



Henri BOUTET

(Sainte-Hermine, March 24, 1851 – Paris, June 11, 1919)

Parisienne

Parisian Woman or *The Effect of Night in Paris* (English titles)

Drypoint and mezzotint on wove paper, 1893.

References: Stein & Karshan 10; Boyer & Cate 10.

Plate number 12 from *L'Estampe Originale*.

Signed and numbered in pencil.

Plate size: 21 1/8 x 12 inches.



Charles-Marie DULAC

(November 26, 1866 – Paris – December 29, 1898)

Paysage

Landscape (English title)

Lithograph printed in four colors on chine-collé on wove paper, 1893.

References: Stein & Karshan 22; Boyer & Cate 22.

Plate number 13 from *L'Estampe Originale*.

Signed and numbered in pencil.

Image size: 12 ½ x 19 inches.



Henri-Charles GUERARD

(April 28, 1846 – Paris – March 25, 1897)

Les Lapins

The Rabbits (English title)

Woodcut on gray wove paper, 1893.

References: Stein & Karshan 33; Boyer & Cate 33.

Plate number 14 from *L'Estampe Originale*.

Signed and numbered in pencil.

Image size: 13 x 9 inches.



Charles GUILLOUX

(Paris, 1866 – Lormes 1946)

L'Inondation

The Deluge or Floods or Landscape with Poplars (English titles)

Lithograph printed in 4 colors on wove paper, 1893.

References: Stein & Karshan 34; Boyer & Cate 34.

Plate number 15 from *L'Estampe Originale*.

Signed and numbered in pencil.

Image size: 8 ¼ x 11 ¼ inches.



Henri RACHOU

(June 16, 1855 – Toulouse – December 2, 1944)

Panneau Décoratif

Decorative Panel (English title)

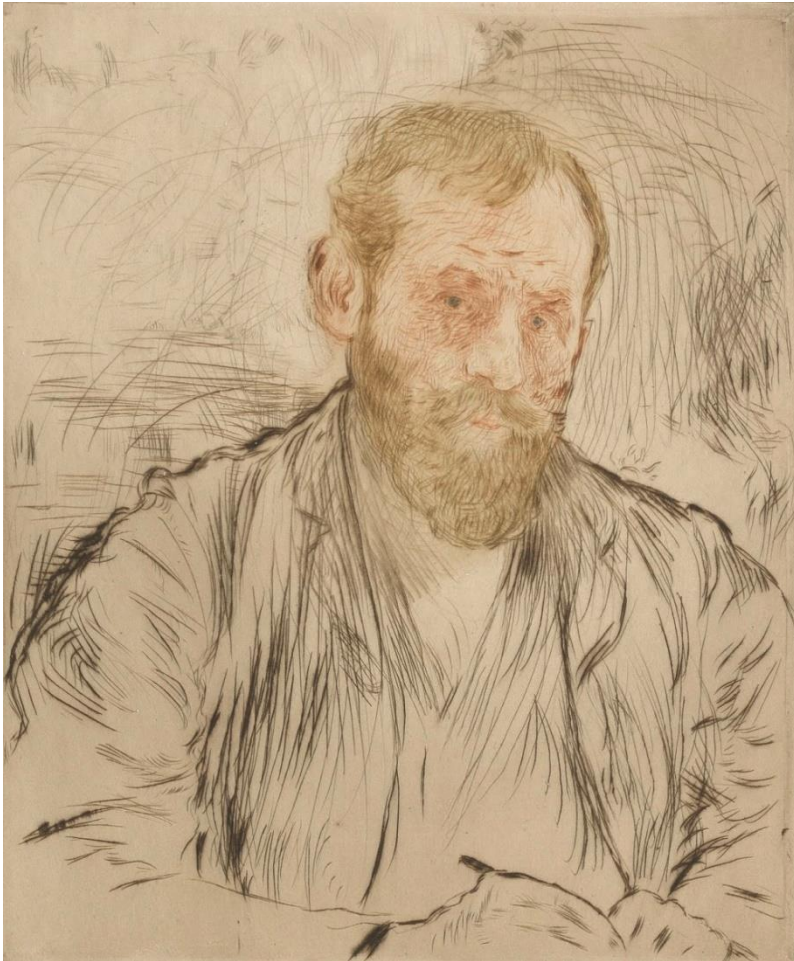
Lithograph printed in 6 colors on wove paper, 1893.

References: Stein & Karshan 59; Boyer & Cate 59.

Plate number 16 from *L'Estampe Originale*.

Signed and numbered in pencil.

Image size: 19 x 11 ¾ inches.



Jean-François RAFFAËLLI

(April 20, 1850 – Paris – February 24, 1924)

Raffaëlli, son portrait par lui-même

Self-Portrait (English title)

Drypoint printed in 4 colors on laid paper, 1893.

References: Stein & Karshan 60; Boyer & Cate 60.

Plate number 17 from *L'Estampe Originale*.

Signed and numbered in pencil.

Plate size: 7 ½ x 6 ¼ inches.



Odilon REDON

(Bordeaux, April 20, 1840 – Paris, July 6, 1916)

Cellule Auriculaire

Auricular Cell (English title)

Lithograph on chine-collé, 1893.

Reference: Stein & Karshan 63; Boyer & Cate 63.

Plate number 18 from *L'Estampe Originale*.

Monogrammed and numbered in pencil.

Image size: 10 ½ x 9 ⅞ inches.



René François Auguste RODIN

(Paris, November 12, 1840 – Meudon, November 17, 1917)

Portrait d'Henry Becque

Portrait of Henry Becque (English title)

Drypoint on *Arches* laid paper, 1893.

Reference: Stein & Karshan 72; Boyer & Cate 72.

Plate number 19 from *L'Estampe Originale*.

Monogrammed and numbered in pencil.

Plate size: 6 ¼ x 7 ⅞ inches.



Louis Paul Henri SÉRUSIER

(Paris, November 9 , 1864 – Morlaix, October 6, 1927)

Paysage

Landscape (English title)

Lithograph printed in brown ink on yellow wove paper, 1893.

Reference: Stein & Karshan 80; Boyer & Cate 80.

Plate number 20 from *L'Estampe Originale*.

Monogrammed and numbered in pencil.

Image size: 9 ¼ x 11 ⅞ inches.