

2 hand / 3 hand movement (Collection 460, Something, Minute 16, Dropped Hours, Brave Color, ATAES, Venus, Margaret)

- **Setting the Time**
 1. Pull the crown out to position 2
 2. Turn the crown to set hour and minute hands
 3. Press the crown back to normal position 1



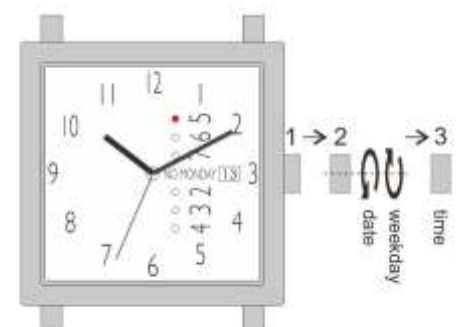
3 hand movement with date (12 Windows, Rudolph)

- **Setting the Time**
 1. Pull the crown out to position 3
 2. Turn the crown to set hour and minute hands
 3. Press the crown back to normal position 1
- **Setting the Date**
 1. Pull crown out to position 2
 2. Turn the crown anti-clockwise to set the date. Avoid setting the date between the hours of 9pm to 4am because the date may not change the following day.
 3. After the date has been set, press the crown back to normal position 1.
 4. The date wheel counts up to the 31st every month. For the months with less than 31 days, please manually advance the date on the 1st of the following month.



3 hand movement with Day and Date (NM Series 1 & 2)

- **Setting the Time**
 1. Pull the crown out to position 3
 2. Turn the crown to set hour and minute hands
 3. Press the crown back to normal position 1
- **Setting the Date and day of the week**
 1. Pull the crown out to position 2
 2. Turn the crown anti-clockwise to set the date.
 3. Turn the crown clockwise to set the day of the week. Avoid setting the day between the hours of 9pm to 4 am or the date may not change the following day.
 4. After the date has been set, press the crown back to normal position 1.
 5. The date wheel counts up to 31st every month. For the months with less than 31 days, please manually advance the date on the 1st of the following month.



** For NM Series 1 & 2, the red dot shows day of the week except monday.

Water resistance

All NO Monday watches are equipped with a water resistance rating of 3ATM (30m). While accidental splashes are fine, but it should be not be taken when bathing and swimming. Kindly note that water damage is not covered under warranty.

Care and precaution

It is important to avoid the following conditions as they may impede the performance of your watch.

- extreme heat or cold, prolonged periods of exposure to direct sunlight
- prolonged periods of exposure to high humidity
- strong magnetic and electric fields or static electricity
- extreme shock or impact

Only clean the case with a soft cloth, with moistened water to wipe away sweat and dirt. Do not use chemicals, solvents or soap.

Avoid prolonged exposure to direct sunlight as it may de-color your leather band.

If you observe any allergy symptoms or skin irritation, stop wearing the watch immediately and consult a doctor or specialist.

Battery

Battery is expected to last around 2 to 3 years. Battery lifespan, however varies depending on movement types and external conditions, such as temperature.

Please do not remove battery from your watch.

For battery replacement, contact your local retailer or our customer service.

Warranty

No Monday watches come with a one year warranty covering defects in materials and craftsmanship from the date of sales under normal use and as directed in the user manual. In case of defects covered by this warranty, your watch will be repaired or replaced at our discretion. The warranty does not cover the battery, glass, straps, improper handling and general wear and tear. Please keep the warranty card and