

# D'ADDARIO

PERCUSSION



# RAISING THE BAR

Evans by D'Addario is in constant search of new materials and technologies to create new products that solve problems and offer newfound benefits for drummers.

Earlier in 2017, Evans launched two marching heads to cater to the pipe band community as well as the drum corps circuit. The **Evans Pipe Band Snare Batter Head** combined durability with extreme sensitivity for both indoor and outdoor playing settings, solving two common issues in the field. Our **System Blue Marching Snare Heads** gave snare lines access to the best of both tone and feel, and they were on the field when Scott Johnson and the Blue Devils took first place at the 2017 DCI World Championships.



With the launch of **Evans UV1 Series**, we've seen a change in the mindset and buying habits of drummers, and it comes as no surprise. The combination of a unique, 10mil film with our patented new super coating and built-in Level 360 technology have brought an entirely new set of standards and expectations for a drumhead's sound, response, and durability. And under the hands of drummers like Omar Hakim, Larnell Lewis, and Ari Hoenig, there's no debate that UV1s are designed for the widest range of sonic possibilities.

But D'Addario Percussion has a constant drive and hunger to push the limits, so we're raising the bar yet again. By popular demand, Evans recently added a **UV1 Line Extension** to include an 8" tom head and tom packs in fusion, rock and standard configurations.



And to kick off the new year, we created the **UV1 Bass Head** for kick drums ranging from 16-26", with offerings in a standard UV1 along with two favorites in UV EQ4 and UV EMAD. Featuring the same warm, rich tones and durability benefits of UV1 tom and snare heads, the UV EQ4 has a fixed internal overtone control ring that reduces sustain and focuses the tonal response of the drum, while the UV EMAD offers the benefit of adjustable damping for added attack and focus.

Stay tuned for these and more exciting innovations from D'Addario Percussion to help inspire your playing and give you the most versatile and durable products that drummers have ever laid their hands on.

# TOP SELLERS & MUST HAVES



## UV1 DRUMHEADS

(see page 108 + 116)



## CALFTONE TOM & SNARE SINGLE-PLY HEADS

(see page 108)



## G1 TOM & SNARE SINGLE-PLY HEADS

(see page 108)



## G2 TOM & SNARE TWO-PLY HEADS

(see page 109)



## HD DRY SNARE HEADS

(see page 113)



## RESO 7 TOM RESONANT HEADS

(see page 111)



## HYDRAULIC RED TOM & SNARE TWO-PLY HEADS

(see page 110)



## SNARE SIDE 300 HEADS

(see page 114)



## HEAVYWEIGHT SNARE & BASS HEADS

(see page 113 + 115)



## EMAD2 BASS BATTER HEADS

(see page 115)



# TOM & SNARE SINGLE-PLY HEADS



## NEW! UV1

The UV1 series is designed for the widest range of sonic possibilities while remaining the most durable single-ply drumhead available. The patented UV-cured coating provides unmatched durability and consistency of texture, while the unique 10mil film delivers exceptional strength and versatility for a full range of musical applications. These drumheads are the number one solution for drummers who are tired of flaked, chipped, and worn out coatings. They also feature increased surface texture, making them extremely responsive for brush playing. Combined with Level 360 Technology™, the UV1 series is the most versatile and durable 10mil drumhead drummers have ever laid their hands on.

Coated (single-ply, 10mil)

Item #	Diameter	Retail
B08UV1	8"	\$32.75
B10UV1	10"	\$33.75
B12UV1	12"	\$35.25
B13UV1	13"	\$37.50
B14UV1	14"	\$39.75
B15UV1	15"	\$43.50
B16UV1	16"	\$44.75
B18UV1	18"	\$58.50



## NEW! Calf-tone

Calf-tone drumheads are a synthetic alternative to traditional calfskin. These heads embody the calfskin look and sound but with the consistency, fit, and tuning range made standard with Level 360 Technology™. Made with a 7mil film base and blended with unique materials, these heads are thinner than our bass heads to help optimize the sound for smaller drums, higher tunings, and greater tonal response. They bring out the best of a vintage kit and evoke a classic appearance and sound from modern drums.

(single-ply, 7.5mil+7mil)

Item #	Diameter	Retail
TT08C7	8"	\$30.00
TT10C7	10"	\$31.50
TT12C7	12"	\$33.00
TT13C7	13"	\$35.25
TT14C7	14"	\$37.25
TT15C7	15"	\$39.75
TT16C7	16"	\$42.50
TT18C7	18"	\$51.75



## TOP★SELLER

### G1™

The single-ply industry standard G1s blend warmth, sustain, and articulation. The high-performance 10mil film ensures that the G1s are both durable and expressive. Excellent option for tom resonant heads.

Clear (single-ply, 10mil)

Item #	Diameter	Retail
TT06G1	6"	\$26.25
TT08G1	8"	\$27.25
TT10G1	10"	\$28.25
TT12G1	12"	\$29.25
TT13G1	13"	\$31.50
TT14G1	14"	\$33.00
TT15G1	15"	\$36.50
TT16G1	16"	\$37.50
TT18G1	18"	\$48.75
TT20G1	20"	\$54.75

Coated (single-ply, 10mil)

Item #	Diameter	Retail
B06G1	6"	\$26.25
B08G1	8"	\$27.25
B10G1	10"	\$28.25
B12G1	12"	\$29.25
B13G1	13"	\$31.50
B14G1	14"	\$33.00
B15G1	15"	\$36.50
B16G1	16"	\$37.50
B18G1	18"	\$48.75
B20G1	20"	\$54.75



### G12™

Using an exclusive 12mil film, the G12 delivers the open and warm tone of a single-ply while the added thickness provides increased durability, attack, and projection for heavy hitters. On snare, the head produces a definitive "crack" while maintaining an ambient sound. The coating adds additional warmth, focus, and depth. Excellent option for tom resonant heads.

Clear (single-ply, 12mil)

Item #	Diameter	Retail
TT06G12	6"	\$26.25
TT08G12	8"	\$27.25
TT10G12	10"	\$28.25
TT12G12	12"	\$29.25
TT13G12	13"	\$31.50
TT14G12	14"	\$33.00
TT15G12	15"	\$36.50
TT16G12	16"	\$37.50
TT18G12	18"	\$48.75
TT20G12	20"	\$54.75

Coated (single-ply, 12mil)

Item #	Diameter	Retail
B06G12	6"	\$26.25
B08G12	8"	\$27.25
B10G12	10"	\$28.25
B12G12	12"	\$29.25
B13G12	13"	\$31.50
B14G12	14"	\$33.00
B15G12	15"	\$36.50
B16G12	16"	\$37.50
B18G12	18"	\$48.75
B20G12	20"	\$54.75



### G14™

Evans G14 batter heads are the loudest, most durable single-ply drum heads on the market. Crafted using premium-quality film that is 14mil thick instead of the industry standard 10mil, the G14 delivers unprecedented durability without losing the strong, dynamic response of a single-ply drumhead. Ideal for use in high-volume performance situations, the G14 can withstand heavy playing while projecting through the mix to provide a full, aggressive sound.

Clear (single-ply, 14mil)

Item #	Diameter	Retail
TT06G14	6"	\$26.25
TT08G14	8"	\$27.25
TT10G14	10"	\$28.25
TT12G14	12"	\$29.25
TT13G14	13"	\$31.50
TT14G14	14"	\$33.00
TT15G14	15"	\$36.50
TT16G14	16"	\$37.50
TT18G14	18"	\$48.75
TT20G14	20"	\$54.75

Coated (single-ply, 14mil)

Item #	Diameter	Retail
B06G14	6"	\$26.25
B08G14	8"	\$27.25
B10G14	10"	\$28.25
B12G14	12"	\$29.25
B13G14	13"	\$31.50
B14G14	14"	\$33.00
B15G14	15"	\$36.50
B16G14	16"	\$37.50
B18G14	18"	\$48.75
B20G14	20"	\$54.75

# TOM & SNARE SINGLE-PLY HEADS



## J1™ Etched

J for “Jazz,” these 10mil single-ply heads have an etched finish that’s ideal for brushes but doesn’t chip away under sticks. With maximized sustain and frequency balance, the J1 emits a natural earthiness. Excellent option for tom resonant heads.

(single-ply, 10mil)

Item #	Diameter	Retail
E10J1	10”	\$31.25
E12J1	12”	\$32.25
E13J1	13”	\$35.00
E14J1	14”	\$37.25
E15J1	15”	\$39.25
E16J1	16”	\$42.25



## Strata™ 1000 Concert Tom

As the mid-range voice within the Strata family, a calfskin-colored coating provides the 10mil Strata 1000 Concert Tom heads with a warm, round tone and a darker fundamental.

Coated (single-ply, 10mil)

Item #	Diameter	Retail
CT06S	6”	\$25.00
CT08S	8”	\$26.50
CT10S	10”	\$27.50
CT12S	12”	\$28.50
CT13S	13”	\$30.75
CT14S	14”	\$31.75
CT15S	15”	\$36.25
CT16S	16”	\$41.50
CT18S	18”	\$58.25

# TOM & SNARE TWO-PLY HEADS



## TOP★SELLER

### G2™

A two-ply head featuring consistency and durability, the G2 offers the perfect blend of depth, sustain, and attack. It makes small toms sing and floor toms growl.

Clear (two-ply, 7mil +7mil)

Item #	Diameter	Retail
TT06G2	6”	\$26.25
TT08G2	8”	\$27.25
TT10G2	10”	\$28.25
TT12G2	12”	\$29.25
TT13G2	13”	\$31.50
TT14G2	14”	\$33.00
TT15G2	15”	\$36.50
TT16G2	16”	\$37.50
TT18G2	18”	\$48.75
TT20G2	20”	\$54.75

Coated (two-ply, 7mil +7mil)

Item #	Diameter	Retail
B06G2	6”	\$26.25
B08G2	8”	\$27.25
B10G2	10”	\$28.25
B12G2	12”	\$29.25
B13G2	13”	\$31.50
B14G2	14”	\$33.00
B15G2	15”	\$36.50
B16G2	16”	\$37.50
B18G2	18”	\$48.75
B20G2	20”	\$54.75



## Onyx™

Onyx heads are designed with two plies of 7.5mil film that will deliver enhanced durability while making the drums cut live. A frost coating gives the Onyx heads a matte black appearance and increases low-end response and attack. The Onyx tom heads are pitch black and rock solid.

Frosted (two-ply, 7.5mil +7.5mil)

Item #	Diameter	Retail
B06ONX2	6”	\$34.00
B08ONX2	8”	\$35.00
B10ONX2	10”	\$36.25
B12ONX2	12”	\$38.25
B13ONX2	13”	\$41.00

Frosted (two-ply, 7.5mil +7.5mil)

Item #	Diameter	Retail
B14ONX2	14”	\$43.25
B15ONX2	15”	\$47.75
B16ONX2	16”	\$49.00
B18ONX2	18”	\$65.25
B20ONX2	20”	\$71.75



## TOP★SELLER

### Black Chrome™

Black Chrome batter heads feature a two-ply construction with a top ply of 7mil optically clear film over a 7.5mil black film to create a black mirror-like aesthetic. The opposing film combination provides a robust tone with accentuated mid-to-low frequency response. Black Chromes are ideal for progressive rock and metal drummers looking for a deep sound with an articulate attack and reliable durability.

(two-ply, 7mil +7.5mil)

Item #	Diameter	Retail
TT06CHR	6”	\$34.00
TT08CHR	8”	\$35.00
TT10CHR	10”	\$36.25
TT12CHR	12”	\$38.25
TT13CHR	13”	\$41.00

(two-ply, 7mil +7.5mil)

Item #	Diameter	Retail
TT14CHR	14”	\$43.25
TT15CHR	15”	\$47.75
TT16CHR	16”	\$49.00
TT18CHR	18”	\$65.25
TT20CHR	20”	\$71.75

# TOM & SNARE TWO-PLY HEADS



## TOP★SELLER

### EC2S™

EC2S tom heads feature Sound Shaping Technology (SST™), a new ink-based damping technique that ensures optimized performance for each individually sized drumhead. Made using two plies of 7mil film, the new design increases attack, tone, length of sustain, and ease of tuning for each head size – delivering a more balanced and pre-EQ'd sound across the full kit. \*US Patent # 7,214,867

Clear (two-ply, 7mil +7mil)

Item #	Diameter	Retail
TT06EC2S	6"	\$30.50
TT08EC2S	8"	\$31.50
TT10EC2S	10"	\$33.00
TT12EC2S	12"	\$34.25
TT13EC2S	13"	\$36.50
TT14EC2S	14"	\$38.50
TT15EC2S	15"	\$43.25
TT16EC2S	16"	\$43.50
TT18EC2S	18"	\$53.75

Frosted (two-ply, 7mil +7mil)

Item #	Diameter	Retail
B06EC2S	6"	\$30.50
B08EC2S	8"	\$31.50
B10EC2S	10"	\$33.00
B12EC2S	12"	\$34.25
B13EC2S	13"	\$36.50
B14EC2S	14"	\$38.50
B15EC2S	15"	\$43.25
B16EC2S	16"	\$43.50
B18EC2S	18"	\$53.75

## TOP★SELLER

### Hydraulic™

The Hydraulic series features a thin layer of oil between two plies of film, offering maximum durability and the fat, deep and short sound pioneered by early 70s rock and roll. Hydraulics are famously easy to tune, making them a perfect fix for troublesome drums and players with little tuning experience.



Hydraulic Blue (7mil+7mil)

Item #	Diameter	Retail
TT06HB	6"	\$30.25
TT08HB	8"	\$31.25
TT10HB	10"	\$32.75
TT12HB	12"	\$35.00
TT13HB	13"	\$37.00
TT14HB	14"	\$39.50
TT15HB	15"	\$41.75
TT16HB	16"	\$43.75
TT18HB	18"	\$52.25
TT20HB	20"	\$64.00



Hydraulic Red (7mil+7mil)

Item #	Diameter	Retail
TT06HR	6"	\$30.25
TT08HR	8"	\$31.25
TT10HR	10"	\$32.75
TT12HR	12"	\$35.00
TT13HR	13"	\$37.00
TT14HR	14"	\$39.50
TT15HR	15"	\$41.75
TT16HR	16"	\$43.75
TT18HR	18"	\$52.25
TT20HR	20"	\$64.00



Hydraulic Glass (6.5mil+6.5mil)

Item #	Diameter	Retail
TT06HG	6"	\$30.25
TT08HG	8"	\$31.25
TT10HG	10"	\$32.75
TT12HG	12"	\$35.00
TT13HG	13"	\$37.00
TT14HG	14"	\$39.50
TT15HG	15"	\$41.75
TT16HG	16"	\$43.75
TT18HG	18"	\$52.25
TT20HG	20"	\$64.00



Hydraulic Black (6.5mil+7.5mil)

Item #	Diameter	Retail
TT06HBG	6"	\$30.25
TT08HBG	8"	\$31.25
TT10HBG	10"	\$32.75
TT12HBG	12"	\$35.00
TT13HBG	13"	\$37.00
TT14HBG	14"	\$39.50
TT15HBG	15"	\$41.75
TT16HBG	16"	\$43.75
TT18HBG	18"	\$52.25
TT20HBG	20"	\$64.00



If there's one instrument Square Peg Round Hole is unapologetically picky about, it's the floor tom. We have three floor toms in our setup, and thunderous, hocketing tom rhythms have become a strong part of our musical identity. It is virtually impossible for the Hydraulic Glass head to sound bad on our toms. The minute we threw them on for the first time, they already delivered the pure, present, and deep tone that we are constantly looking for. These heads have the perfect ratio of attack to resonance, and have a clear tone without producing unnecessary overtones.

**Square Peg Round Hole**





## TOP★SELLER

### Reso 7

The Reso 7 coated resonant head is designed to provide a warm, full tone combined with a shortened sustain for increased clarity and control.

Coated (7mil)

Item #	Diameter	Retail
B06RES7	6"	\$30.50
B08RES7	8"	\$31.50
B10RES7	10"	\$33.00
B12RES7	12"	\$34.25
B13RES7	13"	\$36.50

Coated (7mil)

Item #	Diameter	Retail
B14RES7	14"	\$38.50
B15RES7	15"	\$42.25
B16RES7	16"	\$43.50
B18RES7	18"	\$52.50



### Genera™ Resonant

Genera Resonants have brighter overtones than G1. The line offers bright, open sustain with any batter head.

Clear (10mil)

Item #	Diameter	Retail
TT06GR	6"	\$26.25
TT08GR	8"	\$27.25
TT10GR	10"	\$28.25
TT12GR	12"	\$29.25
TT13GR	13"	\$31.50

Clear (10mil)

Item #	Diameter	Retail
TT14GR	14"	\$33.00
TT15GR	15"	\$35.50
TT16GR	16"	\$37.50
TT18GR	18"	\$47.50



### Resonant Glass and Black

Resonant Glass and Black heads are some of the thinnest resonant heads we make. When used with either a single- or two-ply head, they will increase attack and shorten sustain.

Resonant Glass (6.5mil)

Item #	Diameter	Retail
TT06RGL	6"	\$26.25
TT08RGL	8"	\$27.25
TT10RGL	10"	\$28.25
TT12RGL	12"	\$29.25
TT13RGL	13"	\$31.50
TT14RGL	14"	\$33.00
TT15RGL	15"	\$35.50
TT16RGL	16"	\$37.50
TT18RGL	18"	\$47.50

Resonant Black (7.5mil)

Item #	Diameter	Retail
TT06RBG	6"	\$26.25
TT08RBG	8"	\$27.25
TT10RBG	10"	\$28.25
TT12RBG	12"	\$29.25
TT13RBG	13"	\$31.50
TT14RBG	14"	\$33.00
TT15RBG	15"	\$35.50
TT16RBG	16"	\$37.50
TT18RBG	18"	\$47.50



## TOP★SELLER

### EC™ Resonant

The EC Resonant has the ability to control and correct tuning inconsistencies while offering a more centered pitch, increased resonance and dynamic range, and enhanced projection. Made with a 10mil ultra-clear film that provides a mid-range frequency bump, the EC Resonant highlights the natural sound of the drum.

\*US Patent # 7,214,867

(10mil)

Item #	Diameter	Retail
TT06ECR	6"	\$30.50
TT08ECR	8"	\$31.50
TT10ECR	10"	\$33.00
TT12ECR	12"	\$34.25
TT13ECR	13"	\$36.50

(10mil)

Item #	Diameter	Retail
TT14ECR	14"	\$38.50
TT15ECR	15"	\$42.25
TT16ECR	16"	\$43.50
TT18ECR	18"	\$52.50

## DID YOU KNOW

the G1 can also be used as a resonant head? (see page 108)



**EC Resonant: Great resonant heads giving a full, round tone to the drum.**

**Glenn Kotche**

# TOM PACKS & PRO PACKS



## Tom Packs & Pro Packs

Save more when buying our most popular tom head offerings in bundled packages for fusion (10", 12", 14"), rock (10", 12", 16"), and standard (12", 13", 16") configurations. Pro Packs include the added value of a 14" snare batter.

### Tom Packs

#### Fusion Packs (10", 12", 14")

**NEW!**

Description	Item #	Retail
G1 Clear	ETP-G1CLR-F	\$81.75
G1 Coated	ETP-G1CTD-F	\$81.75
UV1 Coated	ETP-UV1-F	\$98.00
G2 Clear	ETP-G2CLR-F	\$81.75
G2 Coated	ETP-G2CTD-F	\$81.75
EC2 Clear	ETP-EC2SCLR-F	\$94.50
EC2 Frosted	ETP-EC2SCTD-F	\$94.50
Hydraulic	ETP-HYDGL-F	\$94.50
Onyx	ETP-ONX2-F	\$103.75
Black Chrome	ETP-CHR-F	\$107.00

#### Rock Packs (10", 12", 16")

**NEW!**

Description	Item #	Retail
G1 Clear	ETP-G1CLR-R	\$85.50
G1 Coated	ETP-G1CTD-R	\$85.50
UV1 Coated	ETP-UV1-R	\$102.50
G2 Clear	ETP-G2CLR-R	\$85.50
G2 Coated	ETP-G2CTD-R	\$85.50
EC2 Clear	ETP-EC2SCLR-R	\$102.75
EC2 Frosted	ETP-EC2SCTD-R	\$102.75
Hydraulic	ETP-HYDGL-R	\$102.75
Onyx	ETP-ONX2-R	\$108.75
Black Chrome	ETP-CHR-R	\$110.50

#### Standard Packs (12", 13", 16")

**NEW!**

Description	Item #	Retail
G1 Clear	ETP-G1CLR-S	\$87.50
G1 Coated	ETP-G1CTD-S	\$87.50
UV1 Coated	ETP-UV1-S	\$105.75
G2 Clear	ETP-G2CLR-S	\$87.50
G2 Coated	ETP-G2CTD-S	\$87.50
EC2 Clear	ETP-EC2SCLR-S	\$102.75
EC2 Frosted	ETP-EC2SCTD-S	\$102.75
Hydraulic	ETP-HYDGL-S	\$102.75
Onyx	ETP-ONX2-S	\$115.25
Black Chrome	ETP-CHR-S	\$113.75

## GREATEST★VALUE

### NEW! Pro Packs

#### G2 Clear

Description	Item #	Retail
G2 Clear with 14" HD Dry Snare - Fusion	EPP-G2HDD-F	\$110.00
G2 Clear with 14" HD Dry Snare - Rock	EPP-G2HDD-R	\$116.00
G2 Clear with 14" HD Dry Snare - Standard	EPP-G2HDD-S	\$120.00

#### UV1 Coated

Description	Item #	Retail
UV1 Coated with 14" UV1 Snare - Fusion	EPP-UV1-F	\$132.00
UV1 Coated with 14" UV1 Snare - Rock	EPP-UV1-R	\$136.00
UV1 Coated with 14" UV1 Snare - Standard	EPP-UV1-S	\$140.00

#### EC2S Clear

Description	Item #	Retail
EC2S Clear with 14" HD Dry Snare - Fusion	EPP-EC2SHDD-F	\$126.25
EC2S Clear with 14" HD Dry Snare - Rock	EPP-EC2SHDD-R	\$132.50
EC2S Clear with 14" HD Dry Snare - Standard	EPP-EC2SHDD-S	\$136.50

#### Hydraulic Red

Description	Item #	Retail
Hydraulic Red with 14" UV1 Snare - Fusion	EPP-HRUV1-F	\$132.00
Hydraulic Red with 14" UV1 Snare - Rock	EPP-HRUV1-R	\$136.00
Hydraulic Red with 14" UV1 Snare - Standard	EPP-HRUV1-S	\$140.00



**Black Chrome tom heads provide a warm tone with powerful attack, and are able to endure a punishing tour schedule.**

**Jay Weinberg, Slipknot**





**FOR ADDED DURABILITY & FOCUS**

**TOP★SELLER**

**Power Center™**

The 10mil single-ply Power Center offers durability and focus in the center with a 5mil patch. Unique slots in the 5" diameter dot allow it to flex, keeping the head open at the edges. The Reverse Dot head moves the dot to the underside, and out of the way for brushes. \*US Patent #5,986,196

Power Center  
(single-ply, 10mil+5mil patch)

Item #	Diameter	Retail
B13G1D	13"	\$35.00
B14G1D	14"	\$38.50

Power Center Reverse Dot  
(single-ply, 10mil+5mil reverse dot)

Item #	Diameter	Retail
B10G1RD	10"	\$31.25
B12G1RD	12"	\$32.25
B13G1RD	13"	\$35.00
B14G1RD	14"	\$38.50



**FOR THE HEAVIEST HITTERS**

**TOP★SELLER**

**Heavyweight Snare**

The Heavyweight Snare batter features two identical plies of high-performance 10mil film with a 3mil reverse dot patch to provide maximum durability with a compressed attack and short sustain.

(two-ply, 10mil+10mil+3mil reverse dot)

Item #	Diameter	Retail
B12HW	12"	\$38.25
B13HW	13"	\$41.00
B14HW	14"	\$43.25

**The Heavyweight snare head has the ability to be tuned to ear-splitting tension, allowing for fast response & full-bodied tone.**

**Jay Weinberg, Slipknot**



**TOP★SELLER**

**Genera™ and Genera™ Dry**

This classic Evans head is 10mil single-ply with the fat sound of a two-ply, featuring a 2mil overtone control ring on the underside that "floats" with the head, suppressing excessive overtones and controlling sustain. Genera Dry features small vent holes around the edge that eliminate stray harmonics and tighten the sound.

Genera (10mil+2mil control ring)

Item #	Diameter	Retail
B13GEN	13"	\$35.00
B14GEN	14"	\$37.25

Genera Dry  
(10mil+2mil control ring + vents)

Item #	Diameter	Retail
B12DRY	12"	\$32.25
B13DRY	13"	\$35.00
B14DRY	14"	\$37.25



**TOP★SELLER**

**HD™ (Heavy Duty) and HD™ Dry**

The HD is a durable two-ply (5mil external, 7.5mil internal) that barks live, yet is ideal for the studio. HD Dry features small vent holes around the edge that eliminate stray harmonics and tighten the sound.

HD (5mil+7.5mil+2mil control ring)

Item #	Diameter	Retail
B12HD	12"	\$34.25
B13HD	13"	\$36.50
B14HD	14"	\$38.50

HD Dry (5mil+7.5mil+2mil control ring + vents)

Item #	Diameter	Retail
B12HDD	12"	\$34.25
B13HDD	13"	\$36.50
B14HDD	14"	\$38.50



**ST™ (Super Tough) and ST™ Dry**

Packing two layers of 7.5mil film, the ST promotes durability and a full bandwidth rimshot. It delivers all the volume and ring needed, yet amazingly responds to the flick of a fingernail. On the "Dry" version, small vent holes around the edge eliminate stray harmonics and tighten the sound.

ST (two-ply, 7.5mil+7.5mil)

Item #	Diameter	Retail
B13ST	13"	\$36.50
B14ST	14"	\$38.50

ST Dry (two-ply, 7.5mil+7.5mil+vents)

Item #	Diameter	Retail
B13STD	13"	\$36.50
B14STD	14"	\$38.50

# SNARE & SNARE SIDE HEADS



## EC (Edge Control)

EC snare heads combine Evans' Edge Control technology that pre-EQs the sound, removing troublesome mid-range overtones that muddy the snare drum's sound. The addition of a specially designed patch on the Reverse Dot models lends extra durability, focus, and attack in the center.

\*US Patent # 7,214,867

EC (two-ply, 7mil+10mil)

Item #	Diameter	Retail
B10ECS	10"	\$35.50
B12ECS	12"	\$37.50
B13ECS	13"	\$39.50
B14ECS	14"	\$42.50



## EC1 Reverse Dot

(single-ply, 14mil+3mil reverse dot)

Item #	Diameter	Retail
B13EC1RD	13"	\$39.50
B14EC1RD	14"	\$42.50



## Hydraulic Snare Batter

The classic Evans Hydraulic in a coated version for snare use. With short sustain and superb durability, this head is a blanket cure for troublesome snare drums and reflective rooms.

## EC Reverse Dot

(two-ply, 7mil+10mil+3mil reverse dot)

Item #	Diameter	Retail
B10ECSRD	10"	\$36.25
B12ECSRD	12"	\$38.25
B13ECSRD	13"	\$41.00
B14ECSRD	14"	\$43.25

## Hydraulic Black Snare Coated

(two-ply, 6.5mil+7.5mil)

Item #	Diameter	Retail
B14HBG	14"	\$41.00

## Hydraulic Blue Snare Coated

(two-ply, 7mil+7mil)

Item #	Diameter	Retail
B14HB	14"	\$41.00



## Hybrid™ Coated Drum Set Snare

By utilizing two unique high-tensile fibers, one chosen for flexibility and the other for durability, the Hybrid snare batter achieves greater snare response and dynamic range, while maintaining the extreme durability and accentuated attack preferred by the hardest hitters.

(single-ply)

Item #	Diameter	Retail
B13MHG	13"	\$119.75
B14MHG	14"	\$130.00



## Snare Side 200

The 2mil Snare Side 200 will enhance sensitivity for softer dynamics and brushwork while reducing sustain for greater articulation.

(2mil)

Item #	Diameter	Retail
S10H20	10"	\$26.25
S12H20	12"	\$28.25
S13H20	13"	\$28.25
S14H20	14"	\$30.50

## TOP★SELLER

## Snare Side 300

The 300 is Evans' most versatile snare side head. The 3mil film yields a wide dynamic range and controlled snare response at all dynamic levels.

(3mil)

Item #	Diameter	Retail
S08H30	8"	\$26.25
S10H30	10"	\$26.25
S12H30	12"	\$28.25
S13H30	13"	\$28.25
S14H30	14"	\$30.50
S15H30	15"	\$33.50

## Snare Side 500

The 5mil Snare Side 500 produces a dark, throaty sound that is best suited for deep drums or heavy rock performances.

(5mil)

Item #	Diameter	Retail
S13R50	13"	\$28.25
S14R50	14"	\$30.50

FOR  
PURESOUND  
SNARE WIRES  
SEE PAGES  
129-130



**\$AVE**

## Snare Head Bulk 10-Packs

Item #	Description	Retail	Item #	Description	Retail
B14G1-B	14" G1 Coated	\$33.00	B14G1RD-B	14" Power Center Reverse Dot Coated	\$38.50
B14G2-B	14" G2 Coated	\$33.00	B14DRY-B	14" Genera Dry Coated	\$37.25
B14G14-B	14" G14 Coated	\$33.00	B14HDD-B	14" HD Dry Coated	\$38.50
B14G1D-B	14" Power Center Coated	\$38.50	B14ST-B	14" ST Coated	\$38.50
			S14H30-B	14" Snare Side 300	\$30.50



## EMAD™

Tailor degrees of damping and attack without removing the head or reaching inside the drum. is a 10mil single-ply head with two interchangeable damping rings that maximize attack and low-end. The coating adds additional warmth, focus, and depth. The GMAD is a 12mil single-ply version of the original EMAD that adds punch, low-end, and 20% extra durability. The EMAD2 has an outer ply of 6.5mil and an inner ply of 10mil to enhance attack, focus, and durability.

\*US Patent# 6,291,754

### EMAD Clear (single-ply, 10mil)

Item #	Diameter	Retail
TT16EMAD	16"	\$89.00
BD16EMAD	16"	\$89.00
BD18EMAD	18"	\$93.50
BD20EMAD	20"	\$98.00
BD22EMAD	22"	\$102.75
BD24EMAD	24"	\$108.75
BD26EMAD	26"	\$118.00

### GMAD Clear (single-ply, 12mil)

Item #	Diameter	Retail
BD18GMAD	18"	\$93.50
BD20GMAD	20"	\$98.00
BD22GMAD	22"	\$102.75
BD24GMAD	24"	\$108.75
BD26GMAD	26"	\$118.00

## TOP★SELLER

### EMAD2 Clear (6.5mil + 10mil)

Item #	Diameter	Retail
BD18EMAD2	18"	\$93.50
BD20EMAD2	20"	\$98.00
BD22EMAD2	22"	\$102.75
BD24EMAD2	24"	\$108.75
BD26EMAD2	26"	\$118.00

### EMAD Coated (single-ply, 10mil)

Item #	Diameter	Retail
BD18EMADCW	18"	\$93.50
BD20EMADCW	20"	\$98.00
BD22EMADCW	22"	\$102.75
BD24EMADCW	24"	\$108.75
BD26EMADCW	26"	\$118.00

### Clear (two-ply, 10mil+10mil)

Item #	Diameter	Retail
BD18EMADHW	18"	\$93.50
BD20EMADHW	20"	\$98.00
BD22EMADHW	22"	\$102.75
BD24EMADHW	24"	\$108.75
BD26EMADHW	26"	\$118.00

### Frosted (single-ply 10mil)

Item #	Diameter	Retail
BD18EMADONX	18"	\$98.25
BD20EMADONX	20"	\$101.25
BD22EMADONX	22"	\$108.25
BD24EMADONX	24"	\$124.00
BD26EMADONX	26"	\$140.75

### Clear (two-ply, 6.5mil+6.5mil+10mil ring)

Item #	Diameter	Retail
BD18GB3	18"	\$93.75
BD20GB3	20"	\$98.50
BD22GB3	22"	\$107.00
BD24GB3	24"	\$116.25
BD26GB3	26"	\$123.50

### Frosted (two-ply, 6.5mil+6.5mil+10mil ring)

Item #	Diameter	Retail
BD18GB3C	18"	\$93.75
BD20GB3C	20"	\$98.50
BD22GB3C	22"	\$107.00
BD24GB3C	24"	\$116.25
BD26GB3C	26"	\$123.50

### Clear (10mil+10mil ring)

Item #	Diameter	Retail
TT16GB4	16"	\$66.75
BD16GB4	16"	\$66.75
BD18GB4	18"	\$71.25
BD20GB4	20"	\$75.50
BD22GB4	22"	\$81.50
BD24GB4	24"	\$87.25
BD26GB4	26"	\$94.75

### Frosted (10mil+10mil ring)

Item #	Diameter	Retail
BD18GB4C	18"	\$71.25
BD20GB4C	20"	\$75.50
BD22GB4C	22"	\$81.50
BD24GB4C	24"	\$87.25
BD26GB4C	26"	\$94.75

## EMAD™ Heavyweight

The EMAD Heavyweight features two identical plies of high-performance 10mil film combined with the groundbreaking EMAD system to provide maximum attack, low-frequency response, and ultimate durability.

## EMAD™ Onyx

The EMAD Onyx utilizes a single-ply of 10mil black film with an improved EMAD damping ring and a frosted coating that produces an extra dark sound while delivering additional punch. It's the perfect aesthetic and sonic compliment to the Onyx tom heads and bass resonant.

## EQ3™

The two-ply EQ3 with an internal overtone control ring and removable muffle ring puts the "kick" back in kick drum. Controlled low-end rumble and focused attack make it the perfect live head. Due to its two plies, it will not distort under heavy hitting. The coated version lends a little warmth.

## TOP★SELLER

## EQ4™

Providing optimum slap without sacrificing bottom end, you kick the EQ4 and it kicks back! A special film makes this 10mil single-ply extra rugged and the width of the fixed internal ring is proportional to the head size, optimizing control from 16" to 26".



**I love the durability, sensitivity, and tonal response that Heavyweight provides. Kenny Aronoff, John Fogerty**



# BASS BATTER HEADS



## NEW! UV1

The UV1 series is designed for the widest range of sonic possibilities while remaining the most durable single-ply drumhead available. The patented UV-cured coating provides unmatched durability and consistency of texture, while the unique 10mil film delivers exceptional strength and versatility for a full range of musical applications. Standard UV1s feature the same durable 10mil, single-ply film featured on the tom heads. The UV EQ4 has a fixed internal overtone control ring that reduces sustain and focuses the tonal response of the drum, while the EMAD version has the benefit of adjustable damping for added attack and focus.

### UV1

(single-ply, 10mil)

Item #	Diameter	Retail
B16UV1	16"	\$44.75
BD16UV1	16"	\$80.00
BD18UV1	18"	\$82.75
BD20UV1	20"	\$86.00
BD22UV1	22"	\$91.25
BD24UV1	24"	\$97.50

### UV EQ4

(single-ply, 10mil+10mil ring)

Item #	Diameter	Retail
B16GB4UV	16"	\$80.00
BD16GB4UV	16"	\$80.00
BD18GB4UV	18"	\$85.00
BD20GB4UV	20"	\$90.00
BD22GB4UV	22"	\$97.50
BD24GB4UV	24"	\$105.00
BD26GB4UV	26"	\$115.00

### UV EMAD

(single-ply, 10mil)

Item #	Diameter	Retail
B16UVEMAD	16"	\$95.00
BD16UVEMAD	16"	\$95.00
BD18UVEMAD	18"	\$100.00
BD20UVEMAD	20"	\$107.50
BD22UVEMAD	22"	\$115.00
BD24UVEMAD	24"	\$125.00
BD26UVEMAD	26"	\$135.00



## Calfctone

Calfctone drumheads are a synthetic alternative to traditional calfskin. They embody the look and sound of a natural skin but with the consistency, fit, and tuning range made standard with Level 360 Technology™. These heads bring out the best of a vintage kit and evoke a classic appearance and sound from modern drums. Calfctone bass heads are made using a 12mil film base blended with unique materials to produce warm, full, and rich tones. As an EQ4, a fixed internal overtone control ring helps focus the tonal response of the drum. Combined with EMAD features, these heads have the benefit of adjustable damping for added attack and focus. Standard Calfctone and EQ4 Calfctone can be used as either a batter or resonant head.

### Calfctone

(single-ply, 12mil+7.5mil)

Item #	Diameter	Retail
TT16CT	16"	\$42.50
BD16CT	16"	\$72.50
BD18CT	18"	\$75.00
BD20CT	20"	\$78.25
BD22CT	22"	\$82.75
BD24CT	24"	\$89.00
BD26CT	26"	\$95.25

### EQ4 Calfctone

(single-ply, 12mil+7.5mil+10mil ring)

Item #	Diameter	Retail
TT16GB4CT	16"	\$75.00
BD16GB4CT	16"	\$75.00
BD18GB4CT	18"	\$78.25
BD20GB4CT	20"	\$82.75
BD22GB4CT	22"	\$89.25
BD24GB4CT	24"	\$94.75
BD26GB4CT	26"	\$103.50

### EMAD Calfctone

(single-ply, 12mil+7.5mil)

Item #	Diameter	Retail
TT16EMADCT	16"	\$97.75
BD16EMADCT	16"	\$97.75
BD18EMADCT	18"	\$102.50
BD20EMADCT	20"	\$107.75
BD22EMADCT	22"	\$112.75
BD24EMADCT	24"	\$119.00
BD26EMADCT	26"	\$129.50



## G1™

A starting point in traditional bass drum sounds, the G1 is a 10mil single-ply head that provides bright attack, warm sustain, and a broad tuning range. Can also be used as a resonant head.

### Clear (single-ply, 10mil)

Item #	Diameter	Retail
BD18G1	18"	\$68.50
BD20G1	20"	\$71.25
BD22G1	22"	\$75.50

### Coated White (single-ply, 10mil)

Item #	Diameter	Retail
BD16G1CW	16"	\$66.25
BD18G1CW	18"	\$68.50
BD20G1CW	20"	\$71.25
BD22G1CW	22"	\$75.50



## G2™

The two 7mil plies of the G2 bass head offer maximum durability with wide-open response and undeniably fat low-end. A modern, full resonance you can tailor to taste.

### Clear (two-ply, 7mil+7mil)

Item #	Diameter	Retail
BD20G2	20"	\$71.25
BD22G2	22"	\$75.50

### Coated White (two-ply, 7mil+7mil)

Item #	Diameter	Retail
BD20G2CW	20"	\$71.25
BD22G2CW	22"	\$75.50



**EMAD Heavyweight is the perfect balance of tonality and durability.**  
**Matt Halpern,**  
**Periphery**

# BASS BATTER HEADS



## Hydraulic™

A classic sound, short in sustain. Tension it tight for a real thump or loose and slappy. Two plies sandwich a thin film of oil that suppresses unwanted overtones.

### Hydraulic Blue (7mil+7mil)

Item #	Diameter	Retail
BD20HB	20"	\$77.00
BD22HB	22"	\$81.50

### Hydraulic Red (7mil+7mil)

Item #	Diameter	Retail
BD20HR	20"	\$77.00
BD22HR	22"	\$81.50

### Hydraulic Black (6.5mil+7.5mil)

Item #	Diameter	Retail
BD22HBG	22"	\$81.50

### Hydraulic Glass (6.5mil+6.5mil)

Item #	Diameter	Retail
BD22HG	22"	\$81.50

## BUNDLE PACKS



**\$  
A  
VE**

### EMAD™ System Pack

The EMAD System Pack is a 22" EMAD batter head and a 22" Resonant EMAD head in one convenient package. Designed to deliver the ideal balance of punch, power, and low-end at a reduced price compared to buying the heads individually.

Item #	Diameter	Retail
EBP-EMADSYS	22"	\$193.75



### Heavyweight Knockout Pack

Contains:

- 14" Heavyweight Snare Batter
- 22" EMAD Heavyweight Bass Batter

Item #	Retail
EBP-EMADHW	\$124.25

### American Upgrade

Contains:

- G2 Clear Tom Batters
- G1 Coated Snare Batter
- EMAD Bass Batter
- Classic 5A Drumsticks

**Contact your D'Addario sales rep for details.**  
**1-800-323-2746 or**  
**sales@daddario.com**



### EQ3™ Bass Head Set

Contains:

- 1 EQ3 Batter Head
- 1 EQ3 Resonant Head
- 1 EQ Pad
- 1 EQ Patch

Item #	Retail
BD22B3	\$238.00

**\$  
A  
VE**



# BASS RESO HEADS



## EMAD™ Resonant

A 10mil head with a fixed internal ring, the EMAD Bass Resonant features an improved ring design. Like the EMAD batter, a black plastic sleeve holds in place a foam damping ring that controls overtones around the edge of the 4" offset port, focusing the pitch and enhancing attack. The ring also provides protection for the mic port.



The redesigned EMAD Resonant Control Ring adds durability, attack, control and low-end.

Frosted (single-ply, 10mil)

Item #	Diameter	Retail
BD18REMAD	18"	\$95.50
BD20REMAD	20"	\$100.25
BD22REMAD	22"	\$107.00
BD24REMAD	24"	\$114.00
BD26REMAD	26"	\$123.50



## Resonant Black

A 10mil single-ply head with no rings or vents, the Resonant Black provides a wide-open tone with maximum sustain that's ideal for jazz and bop.

Black (single-ply, 10mil)

Item #	Diameter	Retail
BD18RBG	18"	\$74.75
BD20RBG	20"	\$79.75
BD22RBG	22"	\$85.50



## Retro Screen™ Mesh Resonant

Rediscover the punch of a 60s single-headed bass drum sound. The black mesh of the Retro Screen looks good and keeps your shell in round. Zero sympathetic resonance promotes solid oomph!

Item #	Diameter	Retail
BD22SCR	22"	\$85.50



## EQ1™ Dry Resonant

This solid resonant head with an internal overtone control ring and dry vents produces a cavernous rumble that is microphone friendly. It also responds with a clean fundamental and a controlled but full sustain when tuned high for jazz and bop.

Smooth Black (10mil+10mil ring + vents)

Item #	Diameter	Retail
BD20RA	20"	\$89.75
BD22RA	22"	\$97.00



# BASS RESO HEADS & CUSTOM HEADS



## TOP ★ SELLER

### EQ3™ Resonant

Featuring the offset 5" hole for internal miking, the EQ3 resonant is the popular choice for both players and engineers. With an internal overtone control ring, this head is made for every miking situation, from the studio to the arena.

### DID YOU KNOW

Calftone & EQ4 Calftone can also be used as a bass reso? (See page 116)

#### Smooth Black (10mil+10mil ring)

Item #	Diameter	Retail
BD18RB	18"	\$83.75
BD20RB	20"	\$90.25
BD22RB	22"	\$97.00
BD24RB	24"	\$108.50
BD26RB	26"	\$118.75

#### Smooth White (7.5mil+10mil ring)

Item #	Diameter	Retail
BD18RSW	18"	\$83.75
BD20RSW	20"	\$90.25
BD22RSW	22"	\$97.00
BD24RSW	24"	\$108.50
BD26RSW	26"	\$118.75

#### Onyx (10mil+10mil ring + frost coating)

Item #	Diameter	Retail
BD18RONX	18"	\$89.75
BD20RONX	20"	\$94.75
BD22RONX	22"	\$101.75
BD24RONX	24"	\$113.25
BD26RONX	26"	\$124.75

#### Coated White (6.5mil+10mil ring)

Item #	Diameter	Retail
BD18RCW	18"	\$83.75
BD20RCW	20"	\$90.25
BD22RCW	22"	\$97.00
BD24RCW	24"	\$108.50
BD26RCW	26"	\$118.75

#### Smooth Black (10mil+10mil ring)

Item #	Diameter	Retail
TT16RB-NP	16"	\$77.25
BD16RB-NP	16"	\$77.25
BD18RB-NP	18"	\$83.75
BD20RB-NP	20"	\$90.25
BD22RB-NP	22"	\$97.00
BD24RB-NP	24"	\$108.50
BD26RB-NP	26"	\$118.75

#### Smooth White (7.5mil+10mil ring)

Item #	Diameter	Retail
TT16RSW-NP	16"	\$77.25
BD16RSW-NP	16"	\$77.25
BD18RSW-NP	18"	\$83.75
BD20RSW-NP	20"	\$90.25
BD22RSW-NP	22"	\$97.00
BD24RSW-NP	24"	\$108.50
BD26RSW-NP	26"	\$118.75

#### Coated White (6.5mil+10mil ring)

Item #	Diameter	Retail
BD18RCW-NP	18"	\$83.75
BD20RCW-NP	20"	\$90.25
BD22RCW-NP	22"	\$97.00
BD24RCW-NP	24"	\$108.50
BD26RCW-NP	26"	\$118.75



### EQ3 Resonant, No Port

The EQ3 Resonant is the popular choice for both players and engineers, featuring a 10mil internal overtone control ring which provides a resonant yet controlled tone with attenuated high-frequency response. The latest addition to the line offers the EQ3 Resonant without a microphone port.

## INKED BY EVANS

### Custom Bass Heads & Custom Marching Bass Heads

Inked by Evans Custom Bass Drumheads are made using a high-resolution printing system, resulting in photo-quality images. Instead of printing and applying a laminate like many other custom bass heads, the image is printed directly onto the drumhead, resulting in an uncompromised sound.

- Easy-to-use online interface
- Customizable printing technology
- Multi-graphic options
- 2-week turnaround time
- Available worldwide

Visit [inkedbyevans.com](http://inkedbyevans.com) to view:

- Licensed designs by well-known music artists and graphic designers
- Interesting textures, nature scenes, abstract photography, and clever graphics
- Or upload your own art!



### Custom Bass Heads

Available in sizes 18-26"



### Custom Marching Bass Heads

Available MX or MS in sizes 14-32"



### Inked by Evans Gift Card

Sell custom bass heads over the counter with the Inked by Evans gift card!

Not valid on marching bass heads.

Item #	Diameter	Retail
INKCARDB	18"- 26"	\$180.25

CREATE YOUR OWN CUSTOM DESIGN WITH THE INKED BY EVANS GIFT CARD



# AFRO CUBAN & CONGA HEADS



## Tri-Center™ Bongo

The Tri-Center Bongo heads deliver a bright, penetrating slap with a full, round bottom end, and feature a natural-feeling coating which simulates the touch and response of a natural head. A new tooth-grip extruded hoop\*, combined with laser cuts\*\* around the collar, ensures a clean look, precision tuning, and flawless performances at high tension, while the Tri-Center dot removes unwanted overtones and enhances the fundamental.

Item #	Description	Retail
EB07	7-1/4"	\$77.00
EB09	8-5/8"	\$79.75

Fits: LP® Valje & Generation II, Meinl Fibercraft & Wood FWB400, Toca® 4500 & 4600

### Bongo Combo Pack

Get both heads at one economical price with this combo pack.

Item #	Description	Retail
EB0709	7-1/4" and 8-5/8" (1 each)	\$140.00

## J1™ Etched For Timbale

These single-ply, 10mil heads have a specially etched finish that combines the sustain of an uncoated head with the warmth of a traditional coating. The Evans J1 head delivers a brilliant rimshot without sacrificing depth and is warm and dense in the center with a full sustain at the edges.



(single-ply, 10mil)

Item #	Diameter	Retail
E10J1	10"	\$31.25
E12J1	12"	\$32.25
E13J1	13"	\$35.00
E14J1	14"	\$37.25
E15J1	15"	\$39.25
E16J1	16"	\$42.25

Fits most manufacturers' timbales.  
Specifications subject to change without notice.

\*US Patent #6,350,941

\*\*US Patent #6,184,451



## Tri-Center™ Conga

Evans conga heads provide superior tone, reliable durability, and unsurpassed resistance to climatic and temperature changes. A tapered hoop\* provides better fit on out-of-spec drums, and "v"-shaped laser cut\*\* radial slits help seat the head. The Tri-Center dot removes unwanted overtones and adds weight to the center, thus dropping the fundamental frequency and producing more low-end.

### For LP® Classic Models with "Comfort Curve" Hoop

Item #	Description	Retail
EC1100	Fits 11" LP Professional Series	\$118.75
EC1175	Fits 11-3/4" LP Professional Series	\$121.00
EC1250	Fits 12-1/2" LP Professional Series	\$123.50

Fits Classic/Salsa/Valje (tight fit)/Gio Old Models/Original & Patato Fiberglass/Old Galaxy® Fiberglass

EC1100 also serves as a replacement head for LP's Compact Conga

### For LP® Giovanni Models with "Comfort Curve" Hoop

Item #	Description	Retail
EC0975	Fits LP 9-3/4" Requinto	\$116.25
EC1100E	Fits LP 11" Conga	\$118.75
EC1175E	Fits LP 11-3/4" Conga	\$121.00
EC1250E	Fits LP 12-1/2" Conga	\$123.50

### For Toca® Professional Models with "Easy Play" Hoop

Item #	Description	Retail
EC1100	Fits 11" Toca Professional Series	\$118.75
EC1175	Fits 11-3/4" Toca Professional Series	\$121.00
EC1250	Fits 12-1/2" Toca Professional Series	\$123.50

Fits Limited Edition (LE), Custom Deluxe, and Premier models  
For 11-3/4" Premier, use EC1175E



**The consistency and quality of Evans heads help me achieve the best sounds under any conditions.**  
**Giovanni Hidalgo**

## PIPE BAND HEADS



### NEW! Pipe Band Snare Batter

Designed in collaboration with Stephen Creighton, the Evans Pipe Band Snare Head was designed to meet the rigorous demands of the modern snare drummer while also catering to the traditionalists. Previously, pipe band drummers had to choose between a head that offered a bright and articulate sound for solo performances and a heavier head for more projection in outdoor settings. The Evans Pipe Band Snare batter offers the best of both worlds which drummers can appreciate on and off the green.

Item #	Diameter	Retail
PB-SB1A	14" (Oversized)	\$132.00
PB-SB1B	14" (Standard)	\$132.00



### Snare Side 300

3mil snare side head for a bright and articulate tone. The snare side head of choice for Stephen Creighton and the St. Laurence O'Toole Pipe Band.

Item #	Diameter	Retail
\$14H30	14"	\$30.50



**The new Evans Pipe Band snare head is by far the best head I have ever played on. With its crystal clear clarity, unmatched durability, and ability to maintain pitch and tone, I could play this head all day!**  
**Stephen Creighton**

## MARCHING SNARE BATTER



### NEW! System Blue Marching Snare

The Evans System Blue snare head was designed in collaboration with Scott Johnson of the world-renowned Blue Devils Drum and Bugle Corps. It features a softer feel yet maintains the tonal clarity and projection necessary for a championship-winning drum corps. Snare lines will benefit from reduced fatigue during extended rehearsals when using these drumheads.

System Blue Marching Snare		
Item #	Diameter	Retail
SB13MSB	13"	\$116.25
SB14MSB	14"	\$125.50



**We've been working on this snare head for years; we now have it. The best feel for the hands and the warmest sound at every dynamic level. System Blue and Evans—the finest in the world of pageantry.**  
**Scott Johnson**



### Hybrid Series Snare Batter

By utilizing two unique high-tensile fibers for flexibility and durability, the Hybrid marching snare batter achieves a much softer feel, greater sensitivity, and a broader dynamic range while enhancing projection and durability.

Gray Batter			White Batter		
Item #	Diameter	Retail	Item #	Diameter	Retail
SB13MHG	13"	\$116.25	SB13MHW	13"	\$116.25
SB14MHG	14"	\$125.50	SB14MHW	14"	\$125.50



### Hybrid-S Soft Series Snare Batter

Inspired by the design of the award-winning Hybrid batter series, the Hybrid-S batter features two unique fibers that, when blended together, deliver a soft and sensitive feel with a warm, full, and tonally rich sound with superior snare response desired by the world's top marching ensembles. Without sacrificing durability, the Hybrid-S achieves a softer feel perfect for younger hands, and wider response that makes smaller lines sound big.

Item #	Diameter	Retail
SB13MHSB	13"	\$104.50
SB14MHSB	14"	\$110.50



# MARCHING HEADS

## MARCHING SNARE SIDES



### Hybrid Series Snare Side

By embedding high-tensile fibers in an open weave pattern between two ultra-thin layers of clear film, the Hybrid marching snare side head produces the sound and sensitivity of a polyester bottom with a resistance to stretch that is closer to Kevlar™.

Gray Batter

Item #	Diameter	Retail
SS13MH1	13"	\$70.00
SS14MH1	14"	\$74.50



### MX5™ Snare Side

The 5mil, thin aramid fiber/polyester laminate gives the MX5 maximum snare response, while a thin polyester overtone control ring reinforces the edge durability and eliminates unwanted overtones, further enhancing articulation.

(5mil)

Item #	Diameter	Retail
SS13MX5	13"	\$99.00
SS14MX5	14"	\$103.50



### MS3™ Polyester Snare Side

Clear MS3 Polyester snare side heads deliver a dark, rich sound. A 2mil flap helps suppress unwanted overtones while providing reinforcement at the collar to increase longevity.

(3mil)

Item #	Diameter	Retail
SS13MS3C	13"	\$30.25
SS14MS3C	14"	\$31.25

## MARCHING TENOR HEADS



### System Blue™

Designed in cooperation with the Blue Devils percussion staff, the System Blue tenor head is a two-ply design with 7mil top-ply and 7.5mil bottom. This combination delivers tonal clarity and projection while also increasing durability and pitch stability, reducing the need for frequent tuning. The series also utilizes Evans' unique Sound Shaping Technology™, a damping technique that targets unwanted overtones and provides the control needed to enhance attack, projection, and note definition. The damping pattern on each head also provides a visual reference for the optimal 'playing zone' for each drum, offering a target for less experienced lines.

(7mil+7.5mil)

Item #	Diameter	Retail
TT06SB1	6"	\$30.25
TT08SB1	8"	\$31.25
TT10SB1	10"	\$32.25

(7mil+7.5mil)

Item #	Diameter	Retail
TT12SB1	12"	\$35.00
TT13SB1	13"	\$37.25
TT14SB1	14"	\$39.25



### Corps Clear™

The two-ply design with 6.5mil top-ply and 10mil bottom-ply not only delivers clarity of tone over the drum, but enables the drums to cut through the ensemble in clear and discernible pitches to reach out front and into the stands. The extra thickness (16.5mil total) compared to standard tenor heads (14-15mil total) makes the Corps Clear more durable, which not only prolongs the life of the head but keeps it in tune longer.

(two-ply, 6.5mil+10mil)

Item #	Diameter	Retail
TT06CC	6"	\$28.00
TT08CC	8"	\$29.00
TT10CC	10"	\$30.25

(two-ply, 6.5mil+10mil)

Item #	Diameter	Retail
TT12CC	12"	\$32.25
TT13CC	13"	\$35.00
TT14CC	14"	\$37.25

# MARCHING TENOR & BASS HEADS



## MEC2S™ Tenor

The Marching EC2S features two matching plies of 7mil film for greater strength and durability. Sound Shaping Technology™ controls overtones for focused sound. The hoop profile is specially designed to withstand higher tensions and offer greater durability.

(two-ply, 7mil+7mil)

Item #	Diameter	Retail
TT06MEC2S	6"	\$31.50
TT08MEC2S	8"	\$33.00
TT10MEC2S	10"	\$34.25

(two-ply, 7mil+7mil)

Item #	Diameter	Retail
TT12MEC2S	12"	\$36.50
TT13MEC2S	13"	\$38.50
TT14MEC2S	14"	\$41.25



## MX™ Tenor

MX Tenor Heads are designed with an advanced hoop concept that prevents pull-out. The MX Frost are made using two 7mil plies of tonally rich and durable film with a unique frosted coating that produces a warm but resonant tone.

MX Black (two-ply, 7.5mil+7.5mil)

Item #	Diameter	Retail
TT06MXB	6"	\$31.50
TT08MXB	8"	\$33.00
TT10MXB	10"	\$34.25
TT12MXB	12"	\$36.50
TT13MXB	13"	\$38.50
TT14MXB	14"	\$41.25

MX Frosted (two-ply, 7mil+7mil)

Item #	Diameter	Retail
TT06MXF	6"	\$31.50
TT08MXF	8"	\$33.00
TT10MXF	10"	\$34.25
TT12MXF	12"	\$36.50
TT13MXF	13"	\$38.50
TT14MXF	14"	\$41.25

MX White (two-ply, 7.5mil+7.5mil)

Item #	Diameter	Retail
TT06MXW	6"	\$31.50
TT08MXW	8"	\$33.00
TT10MXW	10"	\$34.25
TT12MXW	12"	\$36.50
TT13MXW	13"	\$38.50
TT14MXW	14"	\$41.25



## MX™ White Bass

The 10mil single-ply MX1 Marching Bass head is equipped with a unique tone-damping system that enhances articulation and focuses low-end. A series of felt damping arcs can be manipulated for indoor or outdoor marching. The MX2 utilizes the same tone-damping system as the MX1, but features two plies of 7.5mil white film for enhanced durability, attack, focus, and projection, ideal for indoor use.

MX1 White (single-ply, 10mil)

Item #	Diameter	Retail
BD14MX1W	14"	\$78.00
BD16MX1W	16"	\$93.25
BD18MX1W	18"	\$100.25
BD20MX1W	20"	\$107.00
BD22MX1W	22"	\$116.25
BD24MX1W	24"	\$125.50
BD26MX1W	26"	\$135.00
BD28MX1W	28"	\$148.75
BD30MX1W	30"	\$165.25
BD32MX1W	32"	\$181.50

MX2 White (two-ply, 7.5mil+7.5mil)

Item #	Diameter	Retail
BD16MX2W	16"	\$93.25
BD18MX2W	18"	\$100.25
BD20MX2W	20"	\$107.00
BD22MX2W	22"	\$116.25
BD24MX2W	24"	\$125.50
BD26MX2W	26"	\$135.00
BD28MX2W	28"	\$148.75
BD30MX2W	30"	\$165.25
BD32MX2W	32"	\$181.50



## MX™ Black Bass

The MX Black Bass Heads produce a bright tone and are equipped with the same tone-damping system as the MX White, which enhances articulation and focuses low-end. A series of felt damping arcs can be manipulated for indoor or outdoor marching.

MX1 Black (single-ply, 10mil)

Item #	Diameter	Retail
BD14MX1B	14"	\$86.25
BD16MX1B	16"	\$104.50
BD18MX1B	18"	\$111.75
BD20MX1B	20"	\$118.75
BD22MX1B	22"	\$128.25
BD24MX1B	24"	\$137.50
BD26MX1B	26"	\$146.75
BD28MX1B	28"	\$160.75
BD30MX1B	30"	\$177.00
BD32MX1B	32"	\$193.50

MX2 Black (two-ply, 7.5mil+7.5mil)

Item #	Diameter	Retail
BD16MX2B	16"	\$104.50
BD18MX2B	18"	\$111.75
BD20MX2B	20"	\$118.75
BD22MX2B	22"	\$128.25
BD24MX2B	24"	\$137.50
BD26MX2B	26"	\$146.75
BD28MX2B	28"	\$160.75
BD30MX2B	30"	\$177.00
BD32MX2B	32"	\$193.50



## MS1™ White Bass (10mil)

This traditional-sounding, smooth white, 10mil single-ply head gives discerning drummers the option to customize their sound with the damping system of their choice. With durability equal to the MX bass head series, these heads will project warm, musical tones indoors and outdoors. No muffling included.

(single-ply, 10mil)

Item #	Diameter	Retail
BD14MS1W	14"	\$64.25
BD16MS1W	16"	\$72.25
BD18MS1W	18"	\$75.50
BD20MS1W	20"	\$80.50
BD22MS1W	22"	\$88.25

(single-ply, 10mil)

Item #	Diameter	Retail
BD24MS1W	24"	\$97.50
BD26MS1W	26"	\$107.00
BD28MS1W	28"	\$118.75
BD30MS1W	30"	\$130.50
BD32MS1W	32"	\$142.00

# CONCERT HEADS

## CONCERT SNARE HEADS



### Strata™ Concert Snare

The Strata Concert Snare Heads have a natural sustain with midrange overtones that yield a darker timbre with a warm, calfskin-like response. The 700 series is designed for sensitivity and expression, whereas the 1000 series is designed for more robust playing. Strata Staccato comes with a 2mil overtone control ring for increased articulation in either thickness.

Strata 700 (single-ply, 7.5mil)

Item #	Diameter	Retail
CS14S	14"	\$31.50

Strata 1000 (single-ply, 10mil)

Item #	Diameter	Retail
CT14S	14"	\$31.75

Strata Staccato 700

(single-ply, 7.5mil+2mil ring)

Item #	Diameter	Retail
CS14SS	14"	\$37.50

Strata Staccato 1000

(single-ply, 10mil+2mil ring)

Item #	Diameter	Retail
CT14SS	14"	\$37.50



### Orchestral Snare

The Orchestral Snare is a thin, 7.5mil head designed for symphonic playing with a warm, open sound and sensitive snare response. The Orchestral Staccato Snare comes with an internal overtone control ring to increase articulation for delicate passages.

Orchestral Snare (single-ply, 7.5mil)

Item #	Diameter	Retail
B14GCS	14"	\$33.00

Orchestral Staccato

(single-ply, 7.5mil+ring)

Item #	Diameter	Retail
B14GCSS	14"	\$38.50

Orchestral 200 Side

(single-ply, 2mil)

Item #	Diameter	Retail
S14GEN20	14" Resonant	\$30.50

Orchestral 300 Side

(single-ply, 3mil)

Item #	Diameter	Retail
S14GEN30	14" Resonant	\$30.50



**The Evans Strata Concert Bass Drum heads provide an ensemble with top notch low-end & punch! Also, they hold their pitch incredibly well, even in the most demanding environments.**

**Jim Wunderlich,  
Blue Devils**



**I use Evans Strata heads on all my concert instruments. They provide incredible response and tone. The Level 360 design makes them easy to tune, and gives me more tuning options than ever before.**

**Jim Campbell,  
University of Kentucky**

## CONCERT TOM & BASS HEADS



### Strata™ 1000 Concert Tom Heads (10mil)

As the mid-range voice within the Strata family, a calfskin-colored coating provides the 10mil Strata Concert Tom Heads with a warm, round tone and a darker fundamental.

Coated (single-ply, 10mil)

Item #	Diameter	Retail
CT06S	6"	\$25.00
CT08S	8"	\$26.50
CT10S	10"	\$27.50
CT12S	12"	\$28.50
CT13S	13"	\$30.75

Coated (single-ply, 10mil)

Item #	Diameter	Retail
CT14S	14"	\$31.75
CT15S	15"	\$36.25
CT16S	16"	\$41.50
CT18S	18"	\$58.25



### Strata™ Concert Bass

The Strata Concert Bass Head is a synthetic head with the appearance, warmth, and full-bodied tone of calfskin. It features mid-range attack with rich depth of sustain and projection. Available with or without a Power Center Dot, which deepens the fundamental.

Strata 1400 with Power Center

(single-ply, 14mil+5mil patch)

Item #	Diameter	Retail
CB3614SD	36"	\$217.50
CB4014SD	40"	\$236.00

Strata 1000 (single-ply, 10mil)

Item #	Diameter	Retail
CB2810S	28"	\$165.75
CB3010S	30"	\$174.00
CB3210S	32"	\$185.25
CB3610S	36"	\$202.75
CB4010S	40"	\$220.50

Strata 1400 (single-ply, 14mil)

Item #	Diameter	Retail
CB3614S	36"	\$209.50
CB4014S	40"	\$231.75





## Orchestral Timpani Heads

Our Orchestral Timpani heads are pre-tensioned for tuning consistency and have a black, powder-coated steel insert ring that delivers desired effect when pedaled, and affords additional support once the head is under tension. It will perform magnificently at *ppp* with soft mallets, yet will not break up or sound harsh at *fff*. Through all this, it retains definite pitch.

(single-ply, 7.5mil)

Item #	Diameter	Retail
ET20	20"	\$177.00
ET20625	20-5/8"	\$177.00
ET21	21"	\$177.00
ET22	22"	\$181.50
ET2250	22-1/2"	\$181.50
ET23	23"	\$181.50
ET2350	23-1/2"	\$181.50
ET24	24"	\$181.50
ET2425	24-1/4"	\$181.50
ET2450	24-1/2"	\$187.50
ET25	25"	\$187.50
ET2550	25-1/2"	\$187.50
ET26	26"	\$187.50
ET2650	26-1/2"	\$193.50
ET27	27"	\$193.50
ET2750	27-1/2"	\$193.50

(single-ply, 7.5mil)

Item #	Diameter	Retail
ET2775	27-3/4"	\$193.50
ET28	28"	\$193.50
ET2850	28-1/2"	\$199.00
ET29	29"	\$199.00
ET30	30"	\$199.00
ET3050	30-1/2"	\$199.00
ET31	31"	\$199.00
ET3150	31-1/2"	\$207.00
ET32	32"	\$207.00
ET33	33"	\$207.00
ET3350	33-1/2"	\$214.00
ET34	34"	\$214.00
ET3450	34-1/2"	\$214.00
ET3475	34-3/4"	\$224.50
ET35	35"	\$224.50
ET36	36"	\$224.50



## Strata™ Timpani Heads

Strata Timpani heads feature a lightly-textured, calfskin-colored coating to provide warm tone, clarity of pitch, and articulation that blends naturally with the ensemble. Strata Timpani heads are pre-tensioned with a black, powder-coated insert ring for tuning consistency and additional hoop support.

Coated (single-ply, 7.5mil)

Item #	Diameter	Retail
EST20	20"	\$190.75
EST20625	20-5/8"	\$190.75
EST21	21"	\$190.75
EST22	22"	\$195.50
EST2250	22-1/2"	\$195.50
EST23	23"	\$195.50
EST2350	23-1/2"	\$195.50
EST24	24"	\$195.50
EST2425	24-1/4"	\$205.25
EST2450	24-1/2"	\$211.25
EST25	25"	\$211.25
EST2550	25-1/2"	\$211.25
EST26	26"	\$211.25
EST2650	26-1/2"	\$216.75
EST27	27"	\$216.75
EST2750	27-1/2"	\$216.75

Coated (single-ply, 7.5mil)

Item #	Diameter	Retail
EST2775	27-3/4"	\$216.75
EST28	28"	\$216.75
EST2850	28-1/2"	\$221.25
EST29	29"	\$227.00
EST30	30"	\$227.00
EST3050	30-1/2"	\$227.00
EST31	31"	\$233.00
EST3150	31-1/2"	\$233.00
EST32	32"	\$237.50
EST33	33"	\$238.75
EST3350	33-1/2"	\$244.50
EST34	34"	\$244.50
EST3450	34-1/2"	\$245.00
EST3475	34-3/4"	\$245.00
EST35	35"	\$261.75
EST36	36"	\$267.75



**No matter the setting or venue or style, these heads have the durability, great clarity, excellent tone, and resonant projection for all situations.**

**Jerry Noble,  
Wright State University**



**I'm excited about the future of Evans products. Those who are purchasing from Evans can be confident they are getting the top of the line.**

**Chip Ross,  
Eastman School of Music**

# TIMPANI HEAD REFERENCE CHART

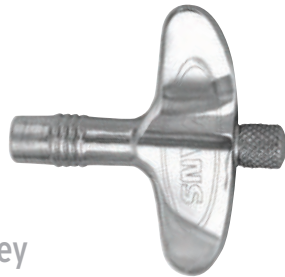
Manufacturer	Bowl inches	Size cm	Evans Item #
<b>Adams</b> (Philharmonic, Philharmonic Dresden Classic*)	20*	50.8*	_23
	23*	58.4*	_2550
	25	63.5	_2750
	26*	66.0*	_2850
	28	71.1	_3050
	29*	73.7*	_32
	30	76.2	_33
<b>Adams</b> (Symphonic, Professional, & Universal)	32*	81.3*	_3475
	20	50.8	_22
	23	58.4	_25
	26	66.0	_28
	29	73.7	_31
<b>Aehnelt</b> (Munich & Dresden)  *Dresden Only	32	81.3	_34
	21.5	54.7	_24
	22	55.9	_25
	23	58.4	_26
	25	63.5	_2775
	26	66.0	_28
	26.5*	67.3*	_2850
	28	71.1	_31
	29	73.7	_32
	31	78.7	_3350
<b>American Drum</b> (Continental & Dresden)  *Dresden Only	32	81.3	_3450
	19	48.2	_22
	20	50.8	_23
	21.5	54.7	_24
	22	55.9	_25
	23	58.4	_26
	24	60.9	_27
	25	63.5	_28
	26	66.0	_29
	27	68.6	_30
	28	71.1	_31
	29	73.7	_32
	29*	73.7*	_3150
	30	76.2	_33
	31	78.7	_34
31*	78.7*	_33	
32	81.3	_35	
33	83.8	_36	
<b>Dynasty</b> (Grand Professional)	20	50.8	_22
	23	58.4	_25
	26	66.0	_28
	29	73.7	_31
	32	81.3	_34
	<b>Goodman</b> (Chain)	18	45.7
20		50.8	_22
22		55.9	_24
23		58.4	_25
24		60.9	_26
25		63.5	_27
26		66.0	_28
27		68.6	_29
28		71.1	_30
29		73.7	_31
30		76.2	_32
<b>Goodman</b> (Dresden)	31	78.7	_33
	23	58.4	_2550
	23*	58.4*	_25
	25	63.5	_2775
	25*	63.5*	_28
*Early Dresden Models	27*	68.6*	_3050
	28	71.1	_31
	20	50.8	_23
<b>GP Percussion</b> (Standard & Baroque) *Baroque	22*	55.9*	_2350
	24	60.0	_2650
	24*	60.9*	_2550
	26	66.0	_2850
	29	73.7	_3150
	32	81.3	_35

When choosing Evans Timpani Heads, substitute a prefix within the blank space to denote the model: 'ET' - Evans Orchestral Timpani Head (opaque) 'EST' - Evans Strata™ Timpani Head (calfskin-colored)

Manufacturer	Bowl inches	Size cm	Evans Item #
<b>Hinger</b> (Dresden or Cable)	20	50.8	_23
	22	55.9	_25
	23	58.4	_26
	25	63.5	_28
	28	71.1	_31
	31	78.7	_34
	32*	81.3	_3475
<b>Jenco</b> (Dresden or Rotary)	23	58.4	2650
	25	63.5	2750
	26	66.0	2750
	29	73.7	3050
<b>Kolberg</b>	30	76.2	33
	22	55.9	2350
	24	60.9	26
	26	66.0	28
	29	73.7	31
<b>Lefima</b> (Dresden)	31	78.7	33
	22	55.9	25
	23	58.4	26
	25	63.5	27
	26	66.0	28
	26	66.0	2850
<b>Lefima</b> (Voyager I & II)	28	71.1	31
	30	76.2	33
	22	55.9	2425
	25	63.5	2650
	26	66.0	2775
<b>Lefima</b> (Light)	28	71.1	30
	21.5	54.6	23
	23	58.4	25
	24	60.9	26
<b>Walter Light</b> (After 1986)	26	66.0	2775
	28	71.1	30
	31	78.7	30
	16	40.6	19
	18	45.7	21
	20	50.8	23
	21.5	54.7	24
	23	58.4	26
	24	60.9	27
	25	63.5	28
	26	66.0	2850
	28	71.1	31
	29	73.7	3150
	31	78.7	34
32	81.3	35	
<b>Ludwig &amp; Ludwig Leedy &amp; Ludwig W.F.L. Ludwig Slingerland</b>  *Pre 1978 sizes	33	83.8	36
	34	86.3	37
	20	50.8	20625
	23	58.4	2425
	24*	60.9*	25
	25*	63.5*	26
	26	66.0	27
	27*	68.6*	28
	28*	71.1*	29
	29	73.7	30
30*	76.2*	31	
<b>Ludwig Ringer/Rogers</b> (Double Suspension Bowl) (Grand Symphonic, Professional, Standard, Universal)	20	50.8	_22
	23	58.4	_25
	26	66.0	_28
	29	73.7	_31
	32	81.3	_34

Manufacturer	Bowl inches	Size cm	Evans Item #
<b>Majestic</b> (Symphony Grand, Symphonic, Harmonic Series)	20	50.8	_22
	23	58.4	_25
	26	66.0	_28
	29	73.7	_231
	32	81.3	_34
<b>New Yorker</b> (Dresden & Chain)  *Formerly Goodman	20	50.8	_23
	22	55.9	_25
	23	58.4	_26
	24	60.9	_27
	25	63.5	_28
	26	66.0	_29
	27	68.6	_30
<b>Ohio Timpani</b>  *Formerly Clevelandler	28	71.1	_31
	29	73.7	_32
	30	76.2	_33
	31	78.7	_34
	20	50.8	_23
<b>Premier</b> (Pro Symphonic Concert Copper)	24	60.9	_26
	26	66.0	2850
	29	73.7	3150
	31	78.7	33
	22.5	55.9	2350
<b>Premier</b> (Elite)	25	63.5	26
	28	71.1	29
	30	76.2	31
	32	81.3	33
<b>Gunter Ringer</b> (German Model, Berlin)	22.5	55.9	2550
	25	63.5	28
	28	71.1	31
	30	76.2	33
	32	81.3	35
<b>Stotz</b> (Cable)	20	50.8	2250
	23	58.5	25
	25	63.5	2750
	28	71.1	3050
	30	76.2	32
<b>Yamaha</b> (3000, 4100 & 4200)	20	50.8	_23
	22	55.9	_25
	23	58.4	_26
	24	60.9	_27
	25	63.5	_28
	26	66.0	_29
	27	68.6	_30
	28	71.1	_31
	29	73.7	_32
	30	76.2	_33
	31	78.7	_34
<b>Yamaha</b> (6100, 6200)	32	81.3	_35
	23	58.4	_25
	26	66.0	_28
	29	73.7	_31
	32	81.3	_34
<b>Yamaha</b> (7100, 7200*)	20	50.8	_22
	23*	58.4*	_25
	24	60.9	_26
	26*	66.0*	_28
	27	68.6	_29
	29*	73.7*	_31
<b>Yamaha</b> (7100, 7200*)	32*	81.3*	_34
	20	50.8	_22
	23	58.4	_25
	26	66.0	_28
	29	73.7	_31

## DRUM KEYS

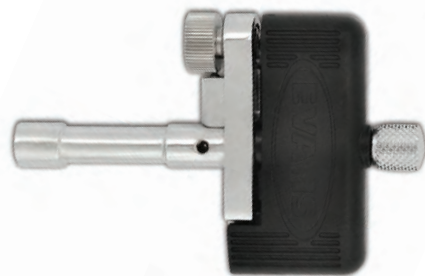


### Magnetic Head Drum Key

(an NS Design product)

This drop-forged drum key is ergonomically designed for comfort and has a knurled knob for quick, easy spinning. Its magnetic head helps prevent slipping and stays in place for fast tightening and loosening. The rattle-free design grips tight to a tension rod during play so it won't buzz.

Item #	Retail
DADK	\$21.00



### Torque Key

(an NS Design product)

The Evans Torque Key has an ergonomic grip for maximum comfort, a knurled knob for quick spinning, and a slip-resistant magnetized head. The torque handle can be set to a desired tension to help drummers attain more accurate tuning. Not recommended for use with drum hardware.

Item #	Retail
DATK	\$50.50



### Drill Bit Key

(an NS Design product)

This drop-forged drill bit key is rattle-free and designed to fit most variable speed cordless drills and screwdrivers.

Item #	Retail
DABK	\$12.25

## BASS DRUM PATCHES

### AF Patch™

Made of aramid fiber, the AF Patch provides unsurpassed durability and emphasizes attack characteristics. Four radial slits along the perimeter allow the head to vibrate naturally for better tone and feel.



Item #	Retail
EQPAF1 (2)	\$17.50

### EQ Bass Drum Patches

#### Black Nylon

This non-slip, flexible nylon bass drum patch softens attack and strengthens the head without affecting sound quality.



Item #	Retail
EQPB1 Single Pedal (2)	\$11.75
EQPB2 Double Pedal (2)	\$11.75

#### Clear Plastic

This clear, non-slip plastic bass drum patch increases attack and strengthens the head without affecting sound quality.



Item #	Retail
EQPC1 Single Pedal (2)	\$11.75
EQPC2 Double Pedal (2)	\$11.75



# PERCUSSION ACCESSORIES

## SOUND CONTROL

### E-Rings™

The E-Ring is an easy-to-use external overtone control ring which “floats” on the surface of a drumhead. It removes overtones and flattens the drumhead’s sound and allows for easier tuning. Our E-Ring PrePaks™ are designed to match the most common drum set configurations, and allow dealers to stock a minimal number of SKUs in order to meet the needs of customers.

#### PrePaks

Item #	Diameter	Retail
ER-STANDARD	12", 13", 14", 16"	\$21.75
ER-FUSION	10", 12", 14" (2)	\$18.50
ER-SNARE	14 x 1" - 14 x 1.5"	\$16.50

#### Filler Packs (10 Packs)

Item #	Diameter	Width	Retail
E10ER1	10"	1"	\$50.50
E12ER15	12"	1.5"	\$50.50
E13ER15	13"	1.5"	\$50.50
E14ER1	14"	1"	\$50.50
E14ER15	14"	1.5"	\$50.50
E14ER2	14"	2"	\$50.50
E15ER2	15"	2"	\$50.50
E16ER2	16"	2"	\$50.50
E18ER2	18"	2"	\$50.50



### EQ Pad™

The EQ Pad is a highly efficient bass drum muffler that attaches to the bottom of the bass drum shell with Velcro®. The hinged pad bounces off the head, allowing sustain before damping the vibrating head. The new version includes a smaller pad on the opposite end that can be used on smaller drums or for minimal damping.

Item #	Retail
EQPAD	\$40.50



**No matter what heads they use, for over 20 years I always use the EQ Pad in our kick drum.**

**Timmy Doyle,  
Drum Tech  
Smashing Pumpkins,  
Guns N' Roses**



### Min-EMAD™

Trim and unobtrusive, the Min-EMAD removes unwanted frequencies but retains desired attack, tone, and feel. By linking the vibrating head with the relatively inert counterhoop, the Min-EMAD removes overtones by resisting the motion of the head.

Item #	Description	Retail
MINEMAD	6-Pack	\$12.25

## MARCHING ACCESSORIES



### Control Screen

Designed for marching snare drums and used by top marching groups, the Evans Control Screen offers a simple and effective way to reduce overall volume without sacrificing tone, articulation, or feel. Fitting neatly underneath the drumhead, the Evans Control Screen is simple to install and remove as needed. The Evans Control Screen is available in 13" and 14".

Item #	Diameter	Retail
EMA13CS1	13"	\$25.25
EMA14CS1	14"	\$25.25



## Custom Pro Series

The Custom Pro Series of snare wires are the ultimate in ease-of-use. They're designed with Anti-Choke™ end plates that significantly reduce annoying snare buzz, and also allow the player to crank up their snare tension for a tight response without choking the drum. The Speed Release™ straps allow the player to disengage the snare wires without releasing the straps from the strainer or butt clamps, enabling quick and easy head or wire changes.

### Steel

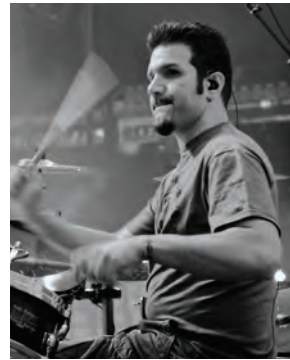
Item #	Description	Retail
CPS1320	13" Steel - 20 Strand	\$38.00
CPS1324	13" Steel - 24 Strand	\$38.00
CPS1420	14" Steel - 20 Strand	\$38.00
CPS1424	14" Steel - 24 Strand	\$38.00

### Brass

Item #	Description	Retail
CPB1320	13" Brass - 20 Strand	\$38.00
CPB1324	13" Brass - 24 Strand	\$38.00
CPB1420	14" Brass - 20 Strand	\$38.00
CPB1424	14" Brass - 24 Strand	\$38.00

## AS EASY AS ...

- 1 Speed Release™ Strap** for quick wire or head changes
- 2 Anti-Choke™ End Plates** reduce sympathetic snare buzz & increase wire tension range
- 3 Alignment Marks** for straight and repeatable wire position



**Custom Pros really bring the snare out of my snare drum AND it's hard to believe how easy it is to change them!**

**Charlie Benante,**  
**Anthrax**



## Custom Series

Custom Series wires feature medium-gauge wire with evenly spaced, standard coils. The Custom line offers 4 different strand configurations that can be employed to change the balance between the drum and snare components of the sound. Models with more strands tend to allow the snares to be more active in influencing the sound, while those with less strands allow the drum to be more prominent in the overall drum sound.

Item #	Description	Retail
P0812	8" - 12 strand	\$33.00
P1016	10" - 16 strand	\$33.00
P1216	12" - 16 strand	\$33.00
P1220	12" - 20 strand	\$33.00
P1316	13" - 16 strand	\$33.00
P1320	13" - 20 strand	\$33.00
P1324	13" - 24 strand	\$33.00
P1416	14" - 16 strand	\$33.00
P1420	14" - 20 strand	\$33.00
P1424	14" - 24 strand	\$33.00
P1520	15" - 20 strand	\$33.00



## Equalizer Series

The Equalizer line has been created to modify the spread and activity of the snare sound by working in conjunction with the snare drum's natural acoustics and snare bed design. Equalizers feature an offset design that removes the strands from the middle of the drum, decreasing the vibration of the wires. Not only is the snare drum drier and crisper with an Equalizer, it is less influenced by sympathetic vibrations from other drums and instruments.

Item #	Description	Retail
E1312	13" - 12 strand	\$33.00
E1316	13" - 16 strand	\$33.00
E1412	14" - 12 strand	\$33.00
E1416	14" - 16 strand	\$33.00

# PURESOUND SNARE WIRES



## Blaster Series

Blasters Series snare wires are professional-quality snares developed for high-volume, high-intensity drumming. They feature specially formulated, premium-grade steel alloy wires on angled, copper-colored end clips. The exclusive bent end clips create greater snare wire contact across the entire surface of the drumhead, offering increased activity, consistency, response and projection.

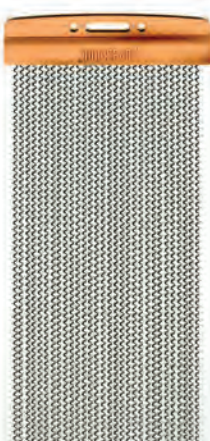
Item #	Description	Retail
<b>B1016</b>	10" - 16 strand	\$33.00
<b>B1220</b>	12" - 20 strand	\$33.00
<b>B1320</b>	13" - 20 strand	\$33.00
<b>B1420</b>	14" - 20 strand	\$33.00



## Concert Series

The Concert Series wires have been developed specifically for use on concert and orchestral snare drums, and are made from a specially formulated stainless steel alloy combined with an extended coil pattern to create a deeper, drier, and darker tone with increased articulation.

Item #	Description	Retail
<b>C1412</b>	14" - 12 strand	\$33.00
<b>C1416</b>	14" - 16 strand	\$33.00



## Super 30 Series

The Super 30 Series utilizes the same steel alloy wires, handcrafted construction methods, and exclusive copper end clips as the Custom Series in a 30-strand format designed to increase snare response and articulation. Compared to other wide-format snare wires, the Puresound Super 30 wires are able to create a distinctive and penetrating sound without choking the drum or sacrificing its feel. Additionally, the Super 30 needs only a slightly wider than normal snare bed (3-3.5 inch) for optimum performance.

Item #	Description	Retail
<b>S1230</b>	12"	\$43.75
<b>S1330</b>	13"	\$43.75
<b>S1430</b>	14"	\$43.75



## Vintage Series

The Vintage Series snare wires are designed not only to replace worn and no longer available wires on vintage snare drums, but they are also designed to enhance the performance of those classic drums. With a new set of Puresound wires, Dynasonics, Radio Kings, and Super Sensitives will sound and perform as well as, if not better, than they did when they were new.

Item #	Description	Retail
<b>PD1416</b>	14" Dynasonic	\$65.50
<b>PF1416</b>	14" Pearl Free-Floating	\$65.50
<b>PR1416</b>	14" Radio King Clam Shell	\$65.50
<b>PS1412</b>	14" Super Sensitive (1920-1968)	\$65.50
<b>PS1416</b>	14" Super Sensitive (1969-Present)	\$65.50



## Twisted Series

The Twisted Series are made from twenty double strands of Puresound's premium-grade steel alloy wire that are braided together, resulting in increased levels of dryness, articulation, and response.

Item #	Description	Retail
<b>T1320</b>	13" - 20 Double Strand	\$54.50
<b>T1420</b>	14" - 20 Double Strand	\$54.50

## SNARE ACCESSORIES



Item #	Description	Retail
<b>MC4</b>	Blue Cable Strings (4pcs)	\$13.00
<b>MC50</b>	50 ft. Spool Blue Cable String	\$54.50
<b>MS4</b>	Black Nylon Strings (4pcs)	\$11.75
<b>MS50</b>	50 ft. Spool Black Nylon String	\$54.50
<b>MT4</b>	Mylar Straps (4pcs)	\$11.75





## RealFeel™ Practice Pads

RealFeel Practice Pads are the most popular practice option available. Featuring a natural gum rubber playing surface with a dark gray fabric finish which resists wear and tear, RealFeel practice pads provide the best practice substitute to an acoustic drum. A variety of models are available to suit individual practice requirements. RealFeel practice pads come in self-display cases for easy merchandising.

Item #	Description	Special Features	Retail
<b>RF6GM</b>	6" Mountable Speed Pad	Single-sided gum rubber surface with an 8mm threaded insert	\$34.00
<b>RF12G</b>	12" Speed Pad	Single-sided gum rubber surface	\$54.50
<b>RF6D</b>	6" Speed & Workout Pad	Two-sided pad with gum rubber and neoprene surfaces	\$38.00
<b>RF12D</b>	12" Speed & Workout Pad	Two-sided pad with gum rubber and neoprene surfaces	\$65.50

## Apprentice™ Beginner Practice Pads

Item #	Description	Special Features	Retail
<b>ARF7GM</b>	7" Apprentice Pad	Single-sided gum rubber pad with an 8mm thread for mounting	\$33.75



## RealFeel™ Folding Bass Pedal Practice Pad

The sturdy, lightweight, and collapsible construction of the RealFeel™ Folding Bass Pedal Practice Pad makes it the perfect footwork practice tool for the gigging drummer, student, or hobbyist. The impact pad is wide enough to accommodate a double-pedal, and offers a realistic rebound that mimics the action of a drumhead.

Item #	Retail
<b>RFBASS</b>	\$119.00

## Replacement Pad

Item #	Retail
<b>RFBASSR</b>	\$21.75



**I have traveled to over 60 countries sharing the joy of drumming and my RealFeel Pad is always with me.**

**Dom Famularo**

## Apprentice Pad Stand

The Apprentice Pad Stand is a compact, lightweight, and single-braced stand with an 8mm threaded post and pivoting platform for attaching the 7" Apprentice Pad and the 6" RealFeel Mountable Speed Pad. The height is adjustable, and the post can be tilted to any angle to suit the player's preference.

Item #	Retail
<b>ARFSTD</b>	\$72.00



# DRUM SET MUTES



S014HAT

S020RIDE & S022RIDE



SOBASS

## SoundOff™ Drum Mutes

SoundOff Drum Mutes are the most popular line of volume control products available. The mutes provide significant volume reduction to keep practice noise to a minimum. SoundOff drum mutes feature a durable construction that can withstand frequent practicing. The Bass Mute fits drum sizes 18" to 26" with ease, while the fitted cymbal mutes provide a more realistic rebound on ride and hi-hat cymbals. Assorted drum mute sets are great add-on sales for entry-level drum sets.

### Single Mutes

Item #	Description	Retail
S0-6	6" Tom Mute	\$9.75
S0-8	8" Tom Mute	\$10.75
S0-10	10" Tom Mute	\$11.75
S0-12	12" Tom Mute	\$13.00
S0-13	13" Tom Mute	\$14.50
S0-14	14" Tom Mute	\$15.50
S0-15	15" Tom Mute	\$17.50
S0-16	16" Tom Mute	\$19.50
SOBASS	Bass Mute	\$72.00
SO-CYM	Cymbal Mute	\$11.75
S014HAT	14" Hi-Hat Mute	\$23.00
S020RIDE	20" Ride Mute	\$33.00
S022RIDE	22" Ride Mute	\$36.00

### Assortments

Item #	Description	Retail
S0-0244	Drum Mute Fusion Pack – 10", 12", 14", 14"	\$46.75
S0-2346	Drum Mute Standard Pack – 12", 13", 14", 16"	\$52.50
SOSETFSN	Box Set – Fusion Includes Cymbal and Bass Mutes 10", 12", 14", 14"	\$169.50
SOSETSTD	Box Set – Standard Includes Cymbal and Bass Mutes 12", 13", 14", 16"	\$174.75

SOSETFSN  
SOSETSTD



S0-0244  
S0-2346