



**SAVE ENERGY.
BUILD SMART.**



ABOUT PARTEL

Partel was founded in 2011 with the goal of providing the construction industry with high performance and energy-efficient systems.

Our growth has been rapid and robust since our establishment in the West of the Emerald Isle. We are currently present in Ireland, the United Kingdom, and North America. Our company offers an extensive selection of Wind tight and Air tight Systems for the low-energy building industry.

New products have been added to Partel's portfolio, providing builders, architects, and designers with a blend of affordability, sustainable quality, functionality, and technical know-how.

A variety of our ranges, including EXOPERM, IZOPERM, VARA, CONIZO, and CONEXO, are available for a wide range of internal and external building applications. With cutting-edge adhesives, airtight membranes, sealing tapes and thermal bridging solutions that encourage green building, we are constantly adding innovative solutions to our portfolio.

**THE SOLUTION IS EFFICIENCY
SAVE ENERGY. BUILD SMART.**

ENHANCING BUILDING PERFORMANCE

- ▶ Reduce energy consumption
- ▶ Improve air quality
- ▶ Reduce noise
- ▶ Reduce heating/cooling costs
- ▶ Thermal and humidity protection
- ▶ Minimise pollutants for homeowners
- ▶ Avoid structural damage
- ▶ Achieve specified R/U values



EEBS
Energy Efficient
Building Seminar

Our background and expertise in Engineering, Architecture and Building physics will ensure the best-solutions for every construction challenge:

- ▶ Customised technical support
- ▶ WUFI condensation risk analysis
- ▶ Onsite inspections
- ▶ CPD Training and Seminars
- ▶ MVHR Design Service
- ▶ U-value calculations

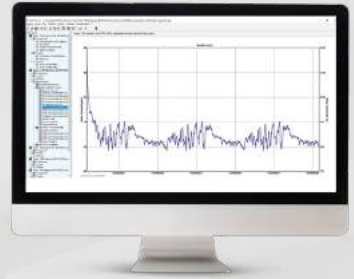


WUFI

TECHNICAL SUPPORT & SERVICE

At Partel, we are committed to providing expert technical advice, supporting your project at every stage. We offer **WUFI® analysis** on request to ensure that the completed project is functioning correctly.

All certificates, reports and technical documentations for Partel building envelope components and ventilation units are available on request and online. Please ask also for most popular product samples patch with full technical data, via e-mail at sales@partel.com.



Technical excellence is at the core of our product development. We invest in high-performance solutions to support innovation and quality of life, with an unwavering focus on sustainability and a better-built environment.

CPD WEBINARS



Partel offers specialised CPD Webinars on-demand, focused on 5 key topics to ensure you can level up your skills in the areas of air and wind tightness, moisture management, ventilation, thermal bridging and fire-resistant structures.

You can benefit from dedicated technical expertise, applicable knowledge, live Q&A, and earn up to 8 **CPD points** for our approved RIBA CPD. This RIBA Approved CPD focuses on the importance of air and wind tightness in low-energy building design. It discusses the importance of external and internal membranes, their sealing and highlights best practice on how to specify and install. It also focuses on the risks associated with airtight buildings and how best to overcome these. The duration of this seminar is 45 minutes presentation plus a 10 minute questions & answers session.

To request a live CPD seminar, please send an e-mail to marketing@partel.com with your preferred date and time or have a look at our website with the current CPDs list.

TECHNICAL WARRANTY

WE OFFER A 10 YEAR LIMITED WARRANTY AND A COMPREHENSIVE LIMITED SYSTEM WARRANTY.

The terms of this warranty varies per region.
Please refer to your local website for current information.



UNMATCHED WEATHER TIGHTNESS AND PROTECTION FOR MODERN METHODS OF CONSTRUCTION

With EXOPERM™ MONO SA 250, Partel brings an advanced self-adhesive breathable membrane, based on proven Monolithic Technology, designed for external and internal applications within the low-energy building sector.

A completely adherent, vapour permeable, and extremely durable membrane for increased protection of assembly during the construction process and long after.



EXOPERM™ 250 MONO SA



SELF-ADHESIVE, MONOLITHIC MEMBRANE

Fields of Application

- ✔ Used as an external breather membrane
- ✔ Roofs and walls applications
- ✔ Suitable especially for MMC - timber frame construction
- ✔ Ideal for timber structures, CLT elements, OBS, steel, or concrete, masonry-type substrates

1.45M X 30M = 43.5M²
4' 9" X 98' 5" = 468 SF

MONO 250 SA Features

- ✔ Integrates Self-adhesive and Monolithic Technology
- ✔ Reaction to Fire: Class B-s1, d0
- ✔ Highly breathable membrane with an Sd value of 0.26m
- ✔ High-performance acrylic adhesive that ensures seamless connections, no primer or adhesive tapes required
- ✔ Class W1 resistance to water penetration
- ✔ Airtight System, with an air permeance value of <math><0.001\text{m}^3/(\text{m}^2\text{h})</math>
- ✔ Optimal UV resistance for up to 4 months
- ✔ Resistant to driving rain
- ✔ Wind tight, but diffusion open



WEIGHT	EN 1849-2	250 G/M ²
SD- VALUE	EN ISO 12572	0.26 M
TEMPERATURE RESISTANCE	EN 1109	-40°C TO 80°C
WATER RESISTANCE	EN 1928	W1
TENSILE STRENGTH MD/CD*	EN 13859-1 (B) / -2(B)	265 / 155 N/50MM
NAIL TEAR RESISTANCE MD/CD*	EN 13859-1 (B) / -2(B)	180 / 200 N

EXOPERTM 200 MONO DURO



Fields of Application

- ✓ External use
- ✓ Roof and facade
- ✓ Suitable for all insulation types

1.5M X 50M=75M²

59'-1/16" X 164'-1/2" = 807 SF



FIRE RATED CLASS B MONOLITHIC BM

BREATHABLE MEMBRANE

Mono Duro 200 Features

- ✓ Reaction to fire classification B-s1,d0 to BS EN 13501-1
- ✓ Fire rated and suitable for high rise constructions as per current Building Regulations
- ✓ Monolithic Technology
- ✓ Highly vapour open with a Sd value of 0.12m
- ✓ Class W1 resistance to water penetration
- ✓ UV resistance over 10 years in open joint facades (up to 50mm)
- ✓ Airtight with an air permeability value of 0,01 m³/m², h, Pa
- ✓ Long term resistance to driving rain
- ✓ The TPU functional layer is vapor open while creates a complete wind tight, waterproof membrane that actively expels out any water, providing long-lasting UV protection and increased fire resistance.

WEIGHT	EN 13859-2	215 G/M ² 3 10%
SD-VALUE	EN 13859-2	0.12 M
UV RESISTANCE	EN 12311-2	>10 YEARS*
FIRE RESISTANCE	EN 13501-1	B-S1, D0
TEMPERATURE RESISTANCE		-40°C TO 80°C

*does not apply in the case of open air weathering, but only when clad with a distance of approx. 5 cm and a maximum joint area of 40%

Partel

FIRE SAFETY IN FAÇADES REACHES NEW LEVELS

Specify Class A Breather
Membranes for Resilient
Buildings




MONOLITHIC
TECHNOLOGY

EXOPERM™ A1 DURO

FIRE RATED CLASS A1 NON-COMBUSTIBLE BREATHABLE MEMBRANE

DURO A1 Features



Fields of Application

- ✔ External use
- ✔ Façades with open or closed joints
- ✔ High-rise, high-risk buildings - schools, offices, hospitals, etc.
- ✔ Commercial and residential developments
- ✔ Timber and steel framed constructions

- ✔ Reaction to Fire classification Class A1
- ✔ Advanced glass fibre fabric for enhanced structural stability
- ✔ Suitable for high-rise and public buildings
- ✔ Highly vapour open with an Sd value of 0.03 m
- ✔ Low emissivity reflective surface boosts thermal performance
- ✔ Class W2 resistance to water penetration
- ✔ High UV resistance
- ✔ Weather tight
- ✔ Compliant with Building Regulations Approved Doc. B
- ✔ Independently tested to EN 13501-1 for compliance

1.5M X 50M=75M²
59-1/16" X 164'-1/2" = 807 SF



FIRE PROTECTION
EUROCLASS
A1



WEIGHT	EN 13859-2	210 G/M ²
REACTION TO FIRE	EN-13501-1	A1
SD-VALUE M	EN-13859-2	0.03 M
WATER RESISTANCE	EN 1928	W2
TENSILE STRENGTH MD / CD	EN 13859-2	350 N / 420 N 3 75
NAIL TEAR RESISTANCE MD / CD	EN 13859-2	3500 N/1800 N/50MM

EXOPERM™ A2 MONO DURO

FIRE RATED CLASS A2 MONOLITHIC BREATHABLE MEMBRANE



Fields of Application

- ✔ External use
- ✔ Facades with open or closed joints
- ✔ Roof applications
- ✔ High-rise, and high-risk buildings - schools, offices, hospitals, etc.
- ✔ Commercial and residential developments
- ✔ Timber and steel framed constructions

MONO DURO A2 Features

- ✔ A2-s1,d0 reaction to fire classification
- ✔ Advanced glass fibre fabric for enhanced structural stability
- ✔ Highly vapour open with an Sd value of 0.09 m
- ✔ Integrates Monolithic Technology
- ✔ Class W2 resistance to water penetration
- ✔ Airtight with an air permeability value of 0,006 m³/m², h, Pa
- ✔ High Permanent UV resistance without cladding (up to 50mm width)
- ✔ Ideal for high-rise and high-risk buildings
- ✔ Weather tight
- ✔ Improves energy efficiency of the building
- ✔ Compliant with Building Regulations Approved Doc. B
- ✔ Independently tested to EN 13501-1 for compliance

1.5M X 50M=75M²
59-1/16" X 164'-1/2" = 807 SF



WEIGHT	EN 13859-2	225 G/M ²
REACTION TO FIRE	EN-13501-1	A2-S1,D0
SD-VALUE M	EN-13859-2	0.09 M
WATER RESISTANCE	EN 1928	W2
TENSILE STRENGTH MD / CD	EN 13859-2	290 N / 390 N 3 75
NAIL TEAR RESISTANCE MD / CD	EN 13859-2	4200 N/3100 N/50MM

EXOPERTM 150 MONO

EXOPERTM 150 MONO CONNEX

MONOLITHIC BREATHABLE MEMBRANES



- ✔ 3-Ply sarking, roof underlay and wind barrier with Next Generation Monolithic functional layer
- ✔ Transports vapour to outside.
- ✔ The functional layer is vapour open whilst having excellent waterproofing properties;
- ✔ Creates a complete windtight, waterproof membrane that actively expels out any water/humidity for long term durability.

Mono 150 / CONNEX features

- ✔ Highly breathable membrane with low Sd value of 0.07 m
- ✔ Excellent ageing resistance due to the Monolithic Technology
- ✔ Class W1 resistance to water penetration
- ✔ Optimal UV stability - up to 6 months
- ✔ Resistant to driving rain
- ✔ Wind tight, but diffusion open
- ✔ Airtight System, with an air permeance value of $<0.001\text{m}^3/(\text{m}^2\text{h})$
- ✔ Helps to prevent structural damage in any types of buildings

CONNEX version features integrated tapes on both sides, ensuring an optimum sealed connection & wind tightness between layers.

Fields of Application

- ✔ External use
- ✔ Suitable for all insulation types
- ✔ Warm, cold & hybrid roof installation
- ✔ Wall application

1.5M X 50M=75M²

59'-1/16" X 164'-1/2" = 807 SF

3M X 50M=150M²

9' 10'-1/3" X 164'-1/2" = 1615 SF



ECHOFOIL

EXO



REFLECTIVE BM BREATHABLE MEMBRANE

Fields of Application

- ✓ External use
- ✓ Roof and wall applications
- ✓ Onsite or Offsite construction
- ✓ Timber frame, masonry and any type of buildings

Echofoil EXO increases thermal performance further and helps to deliver low U-values when used in conjunction with Echofoil IZO.

Echofoil EXO Features

- ✓ Low emissivity value <0.04
- ✓ Enhances thermal performance with an R-Value of 0.78 m²K/W
- ✓ Highly-breathable membrane with low Sd value (0.08 m)
- ✓ Windtight and waterproof
- ✓ Optimal UV stability
- ✓ Humidity controlling and insulating properties
- ✓ Can be easily recycled due to the PP material
- ✓ Ensures significant improvement of thermal resistance
- ✓ Cost savings

2.7M X 50M = 135M²
8'10-19/64" X 164'-1/2" = 1453 SF

3M X 50M=150M²
9' 10-1/3" X 164'-1/2" = 1615 SF



WEIGHT	ISO 536	150 G/M ²
SD- VALUE	EN 1931	0.08 M
TENSILE STRENGTH MD/CD	EN 12311-1	>200 / >150 N
RESISTANCE TO WATER PENETRATION	EN 12114	W2
TEMP RESISTANCE		-20°C TO 80°C
THERMAL RESISTANCE	BS ISO 9869	0.78M ² K/W

ECHOFOIL

IZO



REFLECTIVE VCL VAPOUR CONTROL LAYER

Fields of Application

- ✓ Internal use
- ✓ It's damp proofing properties make it ideal for climate class 4 rooms such as saunas, swimming pools, kitchens and sport facilities
- ✓ Timber frame, masonry or steel construction
- ✓ Roof and wall applications

Echofoil IZO Features

- ✓ Lowest emissivity on the market reflecting up to 97%
- ✓ Enhances thermal performance with an R-Value 0.78 m²K/W
- ✓ High vapour resistance with an SD-Value of 100 m Airtight system, with an air permeance value of <0.002m³/(m²h)
- ✓ W1 water resistance
- ✓ Humidity controlling and insulating properties
- ✓ Excellent durability
- ✓ Great durability and UV stability

The reflective Vapour Control Layer (VCL) helps to improve the thermal performance of a structure via reflecting up to 97% of the internal heat from inside the structure back into the building. Used in conjunction with ECHOFOIL EXO it increases thermal performance further and helps to lower U values.

1.5M X 50M=75M²
59-1/16" X 164'-1/2" = 807 SF

3M X 50M=150M²
9' 10-1/3" X 164'-1/2" = 1615 SF



WEIGHT	EN 1849-2	130 G/M ²
SD- VALUE		100 M
TEMP RESISTANCE		-20°C TO 80°C
TENSILE STRENGTH MD/CD	EN 12311-2	320 / 280 N
THERMAL RESISTANCE	BS ISO 9869	0.78M ² K/W



ECO

INNOVATION TO DRIVE SUSTAINABILITY

NEW

As critical as VCLs are to the durability, efficiency, and comfort of any building, they are not always made from ecologically responsible or environmentally conscious materials.

To address this issue and enhance the sustainable features of their already well-known VCL brands, VARA and IZOPERM, Partel has recently introduced two new paper-based ECO membrane products:

VARA ECO PLUS

IZOPERM™ ECO PLUS



Both products were developed to significantly reduce embodied carbon while also living up to Partel's well-established standards of performance. VARA PLUS ECO consists of up to 62% renewable FSC-certified paper, while IZOPERM Plus ECO is composed of up to 60% FSC-certified paper.

Both membranes reduce the embodied carbon of their projects while maintaining optimal indoor climate control and energy efficiency without sacrificing vapor control capabilities.

IZOPERM PLUS

OPTIMUM PERFORMANCE AIRTIGHT VCL VAPOUR CONTROL LAYER



Izoperm Plus Features

Fields of Application

- ✓ Internal use
- ✓ Suitable for all insulation types
- ✓ Timber frame, masonry or steel construction

- ✓ pH A Class Passive House Certified airtight system, with an air permeance value of $<0.01 \text{ m}^3/(\text{m}^2\text{h})$
- ✓ Optimum vapour resistance for most constructions, boasting a Sd value of 5m
- ✓ Optimal protection against humidity, ensures drying of the building structure
- ✓ W1 water resistance properties
- ✓ Reinforced for optimum strength
- ✓ Proven durability related to its long-term performance
- ✓ Durable towards UV ageing
- ✓ EPD certified



0.75m X 50m=37.5m²
29-17/32" X 164'-1/2" = 403.5 SF

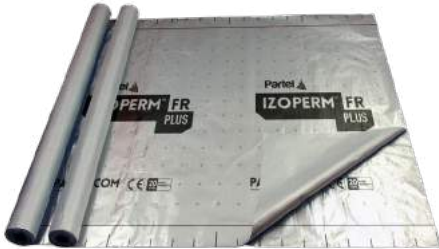
1.5m X 50m=75m²
59-1/16" X 164'-1/2" = 807 SF

3m X 50m=150m²
9' 10-1/3" X 164'-1/2" = 1615 SF

WEIGHT	EN 1849-2	115 G/M ²
SD- VALUE	EN 1931	5 M
TEMP RESISTANCE		-40 °C TO 80 °C
TENSILE STRENGTH	EN 12311-2	MD 290 / CD 310
NAIL TEAR RESISTANCE	EN 12310-1	MD 260 / CD 246

IZOPERM™ A2 PLUS

FIRE-RATED MEMBRANE CLASS A2 VCL VAPOUR CONTROL LAYER



Fields of Application

- ✓ Internal use - Wall and ceiling
- ✓ Compatible with all insulation types
- ✓ Residential and commercial projects
- ✓ High-rise, public buildings

1.5M X 50M=75M²

59'-1/16" X 164'-1/2" = 807 SF



FIRE PROTECTION
EUROCLASS
A2-s1, D0



Izoperm Plus A2 Features

- ✓ Fire-resistant vapour control layer
- ✓ High-performance, aluminium-based material for maximum structural fire safety
- ✓ Euroclass A2-s1, d0 fire rating, tested and compliant product
- ✓ Improves thermal performance (emissivity $\geq 0,05$) due to its innovative reflective surface
- ✓ Weather-resistant membrane
- ✓ Controls structural condensation, and ensures drying of the building structure
- ✓ Superior aging resistance and dimensional stability
- ✓ Improves building durability and energy-efficiency

WEIGHT	EN 1849-2	175 G/M ² (+5%)
SD- VALUE	EN 1931	2000 M
REACTION TO FIRE	EN 13501-1	A2—S1, D0
WATER RESISTANCE	EN 1928	W1
TENSILE STRENGTH MD/CD*	EN 12311-1, MOD. WITH EN 13859-1:2010	800 / 800 N/50MM
NAIL TEAR RESISTANCE MD/CD*	EN 12310-1	170 / 150 N

IZO PERM **ECO** **PLUS**



PAPER-BASED AIRTIGHT SUSTAINABLE VCL VAPOUR CONTROL LAYER

IZOPERM PLUS ECO is a sustainable airtight solution, paper-based.

This innovative vapour check features an Sd value of 20m (US Perm of 0.17), which makes it suitable for most constructions.

Izoperm Plus ECO Features

Fields of Application

- ✓ Internal use
- ✓ Suitable for blown wool insulations or solutions
- ✓ Timber frame, masonry or steel construction



1.5M X 50M=75M²

59'-1/16" X 164'-1/2" = 807 SF

- ✓ Consists of up to 60% of renewable FSC paper for healthier buildings
- ✓ 3 layers membrane - FSC kraft paper on both sides reduces carbon footprint
- ✓ Designed to be used as a vapour control layer, featuring fixed Sd value
- ✓ Optimal airtightness and water vapour transmission rate in different climate conditions
- ✓ High tear-resistance and optimum strength due to fabric mesh reinforcement
- ✓ Watertight – W1 class

WEIGHT	EN 1849-2	140 G/M ²
SD- VALUE	EN 1931	20 M
VAPOUR PERMEANCE	ASTM E96	0.17
TENSILE STRENGTH	EN 12311-1	MD 450 / CD 300
NAIL TEAR RESISTANCE	EN 12310-1	MD 130 / CD 130

ALMA VERT



Fields of Application

- ☑ Internal and external use
- ☑ Thermal separation
- ☑ Doors
- ☑ Windows

Raw Density

- ☑ 115 kg/m³
- ☑ 200 kg/m³
- ☑ 350 kg/m³

*1220 X 1005 X 50MM

(4' X 3'4" X 2")

*1220 X 1005 X 75MM

(4' X 3'4" X 3")

BESPOKE SIZES UPON REQUEST

RECYCLED PANEL FOR HIGH-PERFORMANCE STRUCTURAL INSULATION

- ☑ Partel ALMA VERT is a PET-based panel, a sustainable alternative to conventional construction materials for reducing thermal bridges.
- ☑ Owing to its versatility, being lighter, more compact and with a lower thermal conductivity, this green solution is designed to improve the energy efficiency of the building.

Why Partel ALMA VERT?

- ☑ Efficient thermal break
- ☑ Excellent mechanical strength
- ☑ High compressive strength
- ☑ Low water absorption
- ☑ Permeable to water vapor diffusion
- ☑ Excellent thermal conductivity / R-value
- ☑ Environmentally-friendly core material (100% recyclable)
- ☑ Lightweight and cost-effective composite structure

PROPERTIES	115	200	350	UNIT	STANDARD
COMPRESSIVE STRENGTH	1.8	4	7	N/mm ²	EN 826
E-MODULUS COMPRESSION	175	230	320	N/mm ²	EN 826
THERMAL CONDUCTIVITY	0.034	0.043	TBD	W/ (m . K)	EN 12667
WATER VAPOUR DIFFUSION	16.8	38.3	TBD	Sd	EN 12086

VARA ECO PLUS



Fields of Application

- ✔ Internal use
- ✔ Suitable for blown wool insulations or solutions
- ✔ Timber frame, masonry or steel construction



1.5M X 50M=75M²

59'-1/16" X 164'-1/2" = 807 SF

SMART AIRTIGHT PAPER-BASED VCL VAPOUR CONTROL LAYER

VARA PLUS ECO is a sustainable airtight solution, paper-based.

The humidity variable vapour barrier has a variable range of 0.3—50. This characteristic provides optimum summer drying conditions and winter protection.

VARA Plus ECO Features

- ✔ Consists to 65% of renewable FSC paper for healthier buildings
- ✔ 3 layers membrane - FSC kraft paper on both sides reduces carbon footprint
- ✔ Hygrovariable Technology for active moisture control in the assembly
- ✔ Optimal airtightness and water vapour transmission rate in different climate conditions
- ✔ High tear-resistance and optimum strength due to fabric mesh reinforcement
- ✔ Watertight – W1 class

WEIGHT	EN 1849-2	130 G/M ²
SD- VALUE	EN 1931	18 M
VAPOUR PERMEANCE	ASTM E96	0.07 - 8.58
TENSILE STRENGTH	EN 12311-1	MD 450N / CD 300/50MM
NAIL TEAR RESISTANCE	EN 12310-1	MD 130 / CD 130

VARA™ PLUS

SMART, AIRTIGHT VCL VAPOUR CONTROL LAYER



Fields of Application

- ✓ Internal use
- ✓ Suitable for all insulation types
- ✓ Roof, wall, floor and ceiling applications
- ✓ Timber frame, masonry or steel construction

VARA PLUS Features

- ✓ Innovative airtight membrane that changes permeability according to the ambient relative humidity (RH) for maximum protection in the building envelope where moisture levels are critical
- ✓ Ensures optimum moisture flow through building structures with a Sd range of 0.4m to 60m
- ✓ **Hygrovariable Technology** – Extremely safe airtight system
- ✓ High- performance solution that provides protection from heat loss through the thermal insulation
- ✓ Elastic and durable
- ✓ Reinforced for optimum strength
- ✓ Durable towards UV aging
- ✓ EPD certified

1.5M X 50M=75M²
59-1/16" X 164'-1/2" = 807 SF



WEIGHT	EN 1849-2	120 G/M ²
SD- VALUE	EN 1931	0.4 M TO > 60 M
TEMP RESISTANCE		-40° TO 80°C
TENSILE STRENGTH	EN 12311-2	MD 350 / CD 315
NAIL TEAR RESISTANCE	EN 12310-1	MD 350 / CD 375



FLEXIBLE, AIRTIGHT, SMART VCL

VARA FLUID is a breathable liquid membrane engineered to provide superior airtightness for long-term performance of the building envelope.



Fields of Application

- ✔ Internal and external use
- ✔ Can be applied both vertically and horizontally
- ✔ Wall to floor
- ✔ Wall to ceiling
- ✔ Wall to timber
- ✔ General construction joints

Easy to apply with

- ✔ Roller
- ✔ Airless paint spray device



VARA FLUID Features

- ✔ Permeable to water vapour
- ✔ Excellent adhesion on various surfaces
- ✔ Ready-to-use product shortens application time, especially in commercial projects
- ✔ Ensures a continuous, flexible and permanent airtight
- ✔ Designed to achieve Passive Standard 0.6 AC/h in buildings, but can reach 0.2 AC/h if required
- ✔ Durable airtight connections
- ✔ LOW VOC polymer-based liquid

Quantity

11.5KG e

UV RESISTANCE		3 MONTHS
SD VAPOR VARIABILITY	EN-ISO 12572	0.15-16 @ 0.3MM
USAGE (DEPENDS ON SURFACE)		MIN 500G/M ²
WATER RESISTANCE	EN-1928	W1
PROCESSING TEMPERATURE		+5°C

VARA™

FLUID BRUSH



Fields of Application

- ✓ Internal and external use
- ✓ Can be applied both vertically and horizontally
- ✓ Wall to floor
- ✓ Wall to ceiling
- ✓ Wall to timber
- ✓ Pipe and ducting penetrations
- ✓ General construction joints

PAINT-ON AIRTIGHT, SMART VCL

VARA FLUID BRUSH is a water-based smart vapor control coating providing a continuous airtightness over cracks and gaps in both new build and retrofit projects.

VARA FLUID BRUSH Features

- ✓ Permeable to water vapour
- ✓ Good adhesion on various surfaces
- ✓ Ready-to-use, fast application
- ✓ Flexible, ensures adequate coverage
- ✓ Durable airtight connections
- ✓ Brush applied, no need for primer
- ✓ LOW VOC polymer based liquid
- ✓ Ideal solution for complex details such as doors, windows, corners etc.



Quantity

5.5KG e

UV RESISTANCE		3 MONTHS
SD VAPOR VARIABILITY	EN-ISO 12572	0.15-16 @ 0.3MM
USAGE (DEPENDS ON SURFACE)		+/- 1KG /M ²
WATER RESISTANCE	EN-1928	W1
PROCESSING TEMPERATURE		+5°C

CONEXO™ MULTISEAL

AIR AND WINDTIGHT SEALING TAPE



Fields of Application

- ✓ Internal and external use
- ✓ Windows, doors, corners
- ✓ Joining of membranes, timber, metals
- ✓ Adheres to timber, masonry, concrete, PVC, metal and Partel membranes

CONEXO MULTISEAL

60MM X 25M
(2-3/8" X 82')

CONEXO™ SL MULTISEAL

CONEXO MULTISEAL Features

- ✓ High-performance airtight tape
- ✓ Lifetime* design - excellent ageing resistance due to the strong acrylic adhesive
- ✓ Easy to use – SL version has split release backing for quick installation
- ✓ Easy to tear by hand, accelerate the application process
- ✓ Withstands a damp climate
- ✓ Reinforced with elasticity
- ✓ Environmentally friendly - free of solvents and emulsifiers, low VOC
- ✓ Airtight connections to DIN 4108-11

SL VERSION

During application, 2 rear liners can be removed separately to facilitate easy installation.



CONEXO MULTISEAL SL

60MM X 25M
(2-3/8" X 82')

100MM X 25M
(3-7/8" X 82')

CONEXO™

QUICKSEAL

AIR AND WINDTIGHT LINERLESS SEALING TAPE

CONEXO QUICKSEAL Features

- ✓ High-performance airtight tape
- ✓ Without split liner - Quick application, time-saving sealing solution
- ✓ Relieves the environment by saving waste
- ✓ Optimum level of acrylic adhesive with excellent ageing resistance
- ✓ Withstands a damp climate, and wet surfaces
- ✓ Easy to tear by hand
- ✓ Adheres to timber, masonry, concrete, PVC, metal, Partel membranes
- ✓ Environmentally friendly - free of solvents and emulsifiers, low VOC
- ✓ Airtight connections to DIN 4108-11

Fields of Application

- ✓ Internal and external use
- ✓ Joining of vapour control layers and breathable membranes
- ✓ Adheres to timber, masonry, concrete, PVC, metal and membranes
- ✓ Ideal for offsite and MMC construction

CONEXO QUICKSEAL

60MM X 25M
(2-3/8" X 82')



* Adhesion: Before sticking tapes the surface should be clean and dry, water repelling substances are not suitable for adhesion. Use Primers (Acraprime) on porous or masonry surfaces. Adhesion is assured on all Partel membranes, planed timber, painted timber, plastics and metals.

The more suitable the surface for adhesion the better the results, Folds, creases or substrate issues impact on the system. It is the responsibility of the applicator to perform adhesion tests prior to proceeding - where required.

It is necessary to apply pressure using Partel 'Helping Hand' applicator. Tapes are not designed for tensile strains.



AIRTIGHT JOINING OF VAPOUR CONTROL LAYERS



Fields of Application

- ✓ Internal use
- ✓ Membrane overlaps, windows, doors, roof beams, corners

Conizo Features

- ✓ High-performance airtight tape
- ✓ Lifetime* design - excellent ageing resistance due to the strong acrylic adhesive
- ✓ Withstands a damp climate
- ✓ Easy to tear by hand
- ✓ Extremely stable
- ✓ Environmentally friendly - free of solvents and emulsifiers, low VOC
- ✓ Easy to use – SL version has split release backing for quick installation
- ✓ Airtight connections to DIN 4108-11

SL VERSION

During application, 2 rear liners can be removed separately to facilitate easy installation.



60MM X 40M
(2-3/8" X 131'3")

* Adhesion: Before sticking tapes the surface should be clean and dry, water repelling substances are not suitable for adhesion. Use Primers (Acraprime) on porous or masonry surfaces. Adhesion is assured on all Partel membranes, planed timber, painted timber, plastics and metals. The more suitable the surface for adhesion the better the results, Folds, creases or substrate issues impact on the system . It is the responsibility of the applicator to perform adhesion tests prior to proceeding - where required. It is necessary to apply pressure using Partel 'Helping Hand' applicator. Tapes are not designed for tensile strains.



CONIZO™

PATCH



AIRTIGHT SEAL FOR INJECTION HOLES

CONIZO PATCH Features

- ✓ High-Performance airtight tape, paper-based
- ✓ Lifetime* design – excellent ageing resistance due to the strong acrylic adhesive
- ✓ Extremely stable
- ✓ High shear strength
- ✓ Withstands a damp climate
- ✓ Outdoor exposure up to 3 months
- ✓ Airtight connections to Part L and DIN 4108-11
- ✓ Lowest VOC rating in hazardous substance test

Fields of Application

- ✓ Internal use
- ✓ Suitable for injection holes
- ✓ Utilised as a repair kit for vapour control layers
- ✓ Sealing of openings in construction

160MM X 160MM X 125 UNITS
(6-5/16" X 6-5/16" X 125 UNITS)

** Adhesion: Before sticking tapes the surface should be clean and dry, water repelling substances are not suitable for adhesion. Use Primers (Acraprime) on porous or masonry surfaces. Adhesion is assured on all Partel membranes, planed timber, painted timber, plastics and metals. The more suitable the surface for adhesion the better the results, Folds, creases or substrate issues impact on the system. It is the responsibility of the applicator to perform adhesion tests prior to proceeding - where required. It is necessary to apply pressure using Partel 'Helping Hand' applicator. Tapes are not designed for tensile strains.*



✓ CAN BE PLASTERED

✓ VARIABLE TECHNOLOGY

Fields of Application

- ✓ Internal and external use
- ✓ Membrane overlaps, windows, doors, corners



VARA SEAL

60MM X 25M
(2-3/8" X 82')

VARA SEAL SL

80MM X 25M | 150MM X 25M | 200MM X 25M
(3-1/8" X 82') | (5 7/8" X 82') | (7 7/8" X 82')

** Adhesion: Before sticking tapes the surface should be clean and dry, water repelling substances are not suitable for adhesion. Use Primers (Acraprime) on porous or masonry surfaces. Adhesion is assured on all Partel membranes, planed timber, painted timber, plastics and metals. The more suitable the surface for adhesion the better the results, Folds, creases or substrate issues impact on the system. It is the responsibility of the applicator to perform adhesion tests prior to proceeding - where required. It is necessary to apply pressure using Partel 'Helping Hand' applicator. Tapes are not designed for tensile strains.*

VARA Seal Features

- ✓ High shear strength
- ✓ High-performance airtight adhesive tape
- ✓ Resistant to weathering, UV stability
- ✓ Lifetime* design - excellent ageing resistance due to the strong acrylic adhesive
- ✓ Withstands a damp climate
- ✓ Extremely stable
- ✓ Environmentally friendly - free of solvents and emulsifiers, low VOC
- ✓ Outdoor exposure up to 3 months
- ✓ Easy to use – SL version has split release backing for quick installation
- ✓ Airtight connections to DIN 4108-11

SL VERSION

During application, 2 rear liners can be removed separately to facilitate easy installation.

VARA™ SL SEAL X



✓ CAN BE PLASTERED

✓ VARIABLE TECHNOLOGY

Fields of Application

- ✓ Internal and external use
- ✓ Windows, doors, corners

SL VERSION

During application, 2 rear liners can be removed separately to facilitate easy installation.

VARA SEAL SL X

100 MM X 25
(3-7/8" X 82')

150MM X 25M
(5 7/8" X 82')

AIR TIGHT AND WIND TIGHT SEALING TAPE

VARA Seal X SL Features

- ✓ High shear strength
- ✓ High-performance airtight tape
- ✓ **DOUBLE SIDED ADHESIVE ZONE**
- ✓ Resistant to weathering, UV stability
- ✓ Lifetime* design - permanent ageing resistance due to the strong acrylic adhesive
- ✓ Withstands a damp climate
- ✓ Easy to use – split release backing for quick installation
- ✓ **FINGERLIFT - ACCELERATE THE APPLICATION PROCESS**
- ✓ Extremely stable
- ✓ Environmentally friendly - free of solvents and emulsifiers emulsifiers, low VOC
- ✓ Outdoor exposure up to 3 months
- ✓ Airtight connections to DIN 4108-11



* Adhesion: Before sticking tapes the surface should be clean and dry, water repelling substances are not suitable for adhesion. Use Primers (Acraprime) on porous or masonry surfaces. Adhesion is assured on all Partel membranes, planed timber, painted timber, plastics and metals. The more suitable the surface for adhesion the better the results, Folds, creases or substrate issues impact on the system. It is the responsibility of the applicator to perform adhesion tests prior to proceeding - where required. It is necessary to apply pressure using Partel 'Helping Hand' applicator. Tapes are not designed for tensile strains.

ECHOSEAL FR ALU

FIRE-RESISTANT SEALING TAPE



Fields of Application

- ✓ Internal and External Use
- ✓ Sealing of membrane overlaps, window and door connections
- ✓ Optimum adhesion on all Partel aluminium based membranes



Why Partel ECHOSEAL ALU FR?

- ✓ High-performance tape based on fire-rated adhesive
- ✓ Aluminium surface with black/silver lacquer – excellent barrier against fire/flame and heat
- ✓ Reaction to fire Euroclass B to EN 13501-1 for tape
- ✓ Reaction to fire Euroclass A2—s1,d0 to EN 13501-1 for system integrating the IZOPERM PLUS FR membrane with max. 10% of the ECHOSEAL ALU FR tape
- ✓ Ensures controlled diffusion of water vapour
- ✓ Superior tensile strength and tear resistance
- ✓ Lifetime design - excellent ageing resistance due to the strong acrylic adhesive

**75MM X 25M
(2 15/16” X 82)**

** Adhesion: Before sticking tapes the surface should be clean and dry, water repelling substances are not suitable for adhesion. Use Primers (Acraprime) on porous or masonry surfaces. Adhesion is assured on all Partel membranes, planed timber, painted timber, plastics and metals. The more suitable the surface for adhesion the better the results, Folds, creases or substrate issues impact on the system. It is the responsibility of the applicator to perform adhesion tests prior to proceeding - where required. It is necessary to apply pressure using Partel 'Helping Hand' applicator. Tapes are not designed for tensile strains.*

ECHOSEAL™ FOIL

ALUMINIUM FOIL SEALING TAPE



Fields of Application

- ✓ Internal and external use
- ✓ All Partel interior and exterior membranes
- ✓ Other vapour control layers including PE,PA,PP and aluminium
- ✓ Wood base panels OSB, MDF and plywood
- ✓ Bonding to timber, masonry, concrete, PVC, metal

Why Partel ECHOSEAL FOIL?

- ✓ High-performance air and windtight tape
- ✓ Class W1 resistance to water penetration
- ✓ Airtight connections, features an air permeance value of $<0.0 \text{ m}^3/(\text{m}^2\text{h})$
- ✓ Advanced acrylic adhesive with excellent ageing resistance and durability
- ✓ Resistant to weathering, UV stability
- ✓ Environmentally friendly – free of solvents and emulsifiers
- ✓ Ecolabel Eimicode EC 1 PLUS – meets the strict requirements of GEV construction

50MM X 50M (2" X 164)

** Adhesion: Before sticking tapes the surface should be clean and dry, water repelling substances are not suitable for adhesion. Use Primers (Acraprime) on porous or masonry surfaces. Adhesion is assured on all Partel membranes, planed timber, painted timber, plastics and metals. The more suitable the surface for adhesion the better the results, Folds, creases or substrate issues impact on the system. It is the responsibility of the applicator to perform adhesion tests prior to proceeding - where required. It is necessary to apply pressure using Partel 'Helping Hand' applicator. Tapes are not designed for tensile strains.*

KABSEAL™ PRO

AIRTIGHT & FLEXIBLE SEALING GROMMET FOR CABLES AND PIPES



Fields of Application

- ✔ Internal and external use
- ✔ Excellent compatibility with Partel membranes
- ✔ Sealing cables, pipes, lines, and ventilation cross-sections in the building envelope
- ✔ Airtight sealing according to Part L & DIN 4108-7, featuring excellent outdoor exposure
- ✔ Airtight and thermal-bridge-free electrical installation in accordance with DIN 18015-5

KABSEAL PRO Features

- ✔ High-performance airtight tape
- ✔ Made of permanently flexible rubber - offsets structural movement
- ✔ Excellent adhesion that withstands a damp climate
- ✔ Accurate, and permanent sealing of penetrations in buildings
- ✔ Strong acrylic adhesive with excellent ageing resistance
- ✔ Highly tear-resistant
- ✔ Split release liner for quick installation
- ✔ Solvent-free component



Dimensions

CABLE DIAMETER	4-8MM	2 X 4-8MM	8-12MM	2 X 8-12MM
PIPE DIAMETER	15-22MM	25-32MM	40-55MM	50-72MM
	72-90MM	90-100MM	100-110MM	125-140MM
	150-165MM	180-195MM	200-210MM	

KABSEAL™ 6 PRO

AIRTIGHT SEALING GROMMET FOR MULTI-CABLES X6

KABSEAL PRO 6 Features

- ✓ High-performance airtight tape
- ✓ Made of permanently flexible rubber - offsets structural movement
- ✓ Strain-relieving function for added durability
- ✓ Excellent adhesion that withstands a damp climate
- ✓ Accurate, and permanent sealing of penetrations in buildings
- ✓ Strong acrylic adhesive with excellent ageing resistance
- ✓ Highly tear-resistant
- ✓ Split release liner for quick installation
- ✓ Solvent-free component



Fields of Application

- ✓ Internal and external use
- ✓ Sealing of up to six penetrations - cables, or empty conduits
- ✓ Excellent compatibility with Partel membranes
- ✓ Airtight sealing in accordance with Part L & DIN 4108-7
- ✓ Airtight and thermal-bridge-free electrical installations in compliance with DIN 18015-5



Dimensions

CABLE DIAMETER

6 X 4-11MM

6 X 16-25MM

KABSEAL™

HEAT

HEAT RESISTANT SEALING GROMMET FOR PIPES



Fields of Application

- ✔ Internal and external use
- ✔ Sealing of heating pipes
- ✔ Excellent compatibility with Partel membranes
- ✔ Airtight sealing in accordance with Part L & DIN 4108-7
- ✔ Airtight and thermal-bridge-free electrical installations as per DIN 18015-5
- ✔ Tested for exhaust systems in accordance with DIN 14241-1 and DIN 13216-1



Dimensions



KABSEAL HEAT Features

- ✔ High-performance airtight tape
- ✔ Withstands high temperatures of up to 250oC
- ✔ Made of permanently flexible rubber
- ✔ Extremely flexible grommet - offsets structural movement
- ✔ Excellent adhesion, withstands a damp climate
- ✔ Accurate, and permanent sealing of heating pipes
- ✔ Strong acrylic adhesive with excellent ageing resistance
- ✔ Split release liner for quick installation

PIPE DIAMETER

150-165MM

180-195MM

200-220MM

KABSEAL™ GAS

RADON-RESISTANT SEALING GROMMET FOR PIPES AND CABLES



Fields of Application

- ✔ Internal and external use
- ✔ Sealing of pipes and cables in the building envelope
- ✔ Excellent compatibility with Partel membranes
- ✔ Bituminous membranes aft removal of sanding and/or protective film
- ✔ Airtight connections accord Part L & DIN 4108-7



KABSEAL GAS Features

- ✔ Radon-resistant permanent sealing solution for pipes and cables
- ✔ Made of permanently flexible rubber
- ✔ Extremely flexible conical grommet that offsets structural movement
- ✔ Excellent adhesion and waterproofing properties
- ✔ Strong acrylic adhesive with excellent ageing resistance
- ✔ Special aluminium butyl adhesive flange
- ✔ Split release liner for quick and easy installation



Dimensions

CABLE DIAMETER	8-12MM			
PIPE DIAMETER	15-22MM 125-140MM	25-32MM 150-165MM	72-90MM	100-110MM

KORNERSEAL GAS

RADON-RESISTANT SEALING TAPE FOR CORNERS.

Inside and outside corners



Fields of Application

- ✓ Internal and external use
- ✓ Partel membranes
- ✓ Sealing interior and exterior corners
- ✓ Airtight sealing according to Part L & DIN 4108-7



Dimensions

INSIDE CORNERS	75 X 75 X 75MM	115 X 115 X 115MM
OUTSIDE CORNERS	75 X 75 X 75MM	115 X 115 X 115MM

KORNERSEAL GAS Features

- ✓ Special aluminum butyl adhesive tape, extremely flexible
- ✓ Provides effective radon protection for buildings
- ✓ Highly flexible airtight connections
- ✓ Exceptional adhesion and waterproofing properties
- ✓ Precise and lasting sealing of corners
- ✓ Strong acrylic adhesive with outstanding ageing resistance
- ✓ Adhesive sleeve with split release liner for easy installation

KABSEAL™ SLAB

RADON-RESISTANT SEAL POTTING GROMMET FOR FLOOR SLABS



KABSEAL SLAB Features

Fields of Application

- ✓ Internal and external use
- ✓ Gas seals in floor slabs or subbases
- ✓ Great compatibility with concrete; adheres to almost any material
- ✓ Supply lines positioned close to one another
- ✓ Upright adhesive flange as a cast mould around the lines to pour liquid seal

- ✓ Permanently flexible collar
- ✓ Effective radon protection for buildings
- ✓ Highly adaptable conical grommet – offsets structural movement
- ✓ Excellent adhesion and waterproofing properties
- ✓ Precise and long-lasting gas seals
- ✓ Strong acrylic adhesive with outstanding ageing resistance
- ✓ Special aluminum butyl adhesive flange
- ✓ Split release liner for easy installation

Dimensions

POTTING FLANGE DIAMETER

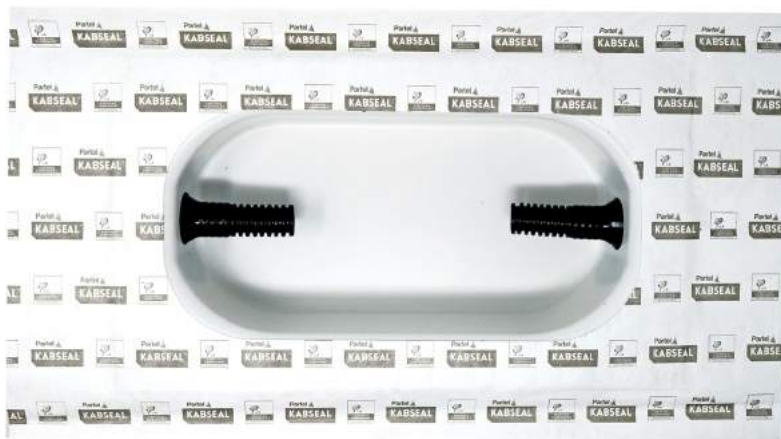
120X120MM

180 X 180MM

260X260MM

ELECTRISEAL BOX

FLEXIBLE AIR SEALING OF CAVITY WALL SOCKETS, UP TO 3



Fields of Application

- ✓ Internal use
- ✓ For electrical cables and empty conduits
- ✓ Excellent compatibility to Partel membranes and OSBs
- ✓ For the airtight in-feeding of cables up to \varnothing 22 mm
- ✓ For airtight sealing according to Part L & DIN 4108-7
- ✓ Airtight and thermal-bridge-free electrical installation in accordance with DIN 18015-5

ELECTRISEAL BOX Features

- ✓ Accurate, and permanent airtight electrical connections
- ✓ Meets the required level of tension relief
- ✓ Special HDPE film adhesive sleeve
- ✓ Strong age-resistant acrylic adhesive, withstands a damp climate
- ✓ Easy installation with a split release liner on the sleeve
- ✓ Halogen-free, ensuring safe and eco-friendly usage

Dimensions

UP TO 2 SOCKETS - DIAMETER	2X4-22MM
UP TO 3 SOCKETS - DIAMETER	2X4-22MM

KABSEAL™ CAP

AIRTIGHT SEALING OF ELECTRICAL INSTALLATION PIPES



Fields of Application

- ✔ Internal use
- ✔ Installation of pipes with diameters from M16 to M40
- ✔ Airtight sealing of electric cables
- ✔ Airtight empty conduit installations

KABSEAL CAP Features

- ✔ Permanently elastic surfaces for enduring performance
- ✔ Separators to prevent voids between pipes
- ✔ Tool-free cable feed-through for easy installation
- ✔ Accurate and permanent sealing of penetrations in buildings

Dimensions

DIAMETER	16MM	20MM	25MM	32MM	40MM
----------	------	------	------	------	------

CONPRESeal

3V BG1



✓ PASSIVE HOUSE COMPLIANT

✓ MOISTURE VARIABLE

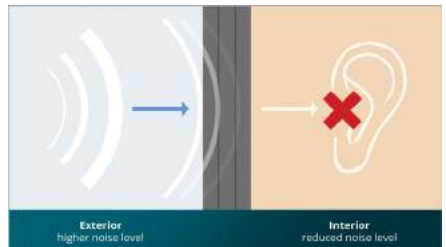
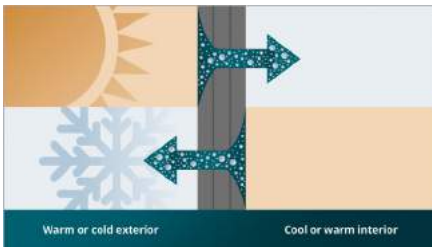
Fields of Application

- ✓ Ideal for an easy and reliable sealing of windows and doors for wood construction, prefabricated construction masonry, framework construction and concrete construction
- ✓ After the installation, the polyurethane soft foam expands in the joint and provides a durable joint sealing and an optimal vapour management

MULTI-FUNCTIONAL PRE-COMPRESSED TAPE

CONPRESeal 3V BG1 Features

- ✓ Highly innovative tape
- ✓ Provide an excellent thermal, sound, air and rain barrier
- ✓ Very easy to use
- ✓ Their “moisture-adapting” membranes ensure that the joint can dry out all year
- ✓ Can be used in any weather conditions due to the protection layer
- ✓ Driving rain & air tight
- ✓ Breathable tape
- ✓ Excellent thermal and sound insulation
- ✓ Very low emissions
- ✓ DIN 18542:2009 certified
- ✓ Triple-Layer Joint Sealing System ensures tested joint sealing of windows suitable for all kind of buildings including Passive Houses in order to reduce energy costs and provides long-term performance and reliability of the sealed joint
- ✓ Allows for movements of building components – e.g. linked to temperature changes.



CONPRESeal

BG1



✓ ASTM TESTED

✓ HURRICANE TESTED

Fields of Application

- ✓ Ideal for an easy and reliable sealing of windows and doors for wood construction, prefabricated construction masonry, framework construction and concrete construction
- ✓ BG1 is also suitable to seal facade joints made of brick, concrete, ACM panels and curtain wall

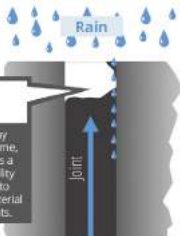
JOINT SEALING TAPE

CONPRESeal Features

- ✓ Extremely durable, exceeds the requirements for protection against driving rain, airtightness and resistance to weathering according to the highest European standard for joint sealant tapes DIN 18542:2009
- ✓ Driving rain & air tight (Resistant to driving rain)
- ✓ Breathable tape
- ✓ Excellent thermal and sound insulation
- ✓ Windproof
- ✓ Very low emissions
- ✓ 15 years function guarantee (tested and certified for a field installation after 15 years in service)
- ✓ Available in various dimensions. Typical tape joint dimensions are e. g. 1/4 -1/2" and 3/8 - 5/8".



Exterior

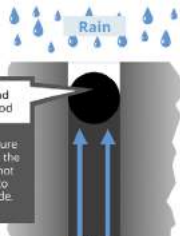


Caulk

Caulk may leak over time, since it has a limited ability to adjust to building material movements.

Moisture

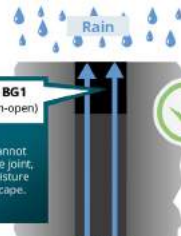
Interior



Caulk and Backer Rod

Any moisture trapped in the joint cannot escape to the outside.

Moisture



Partel BG1 (Diffusion-open)

Rain cannot enter the joint, but moisture can escape.

Moisture

CONLEX BUTYL

FLEXIBLE BUTYL TAPE WITH HIGH TACK



Fields of Application

- ✔ Airtight connections to Part L and DIN 4108-11
- ✔ Suitable to form airtight and watertight seals at windows, doors, wall junctions, pipes, and air ducts
- ✔ Hermetically sealing between counter battens and Partel's exterior membranes for roof structures
- ✔ Ideal for sealing of edges, corners and other geometric, irregular shapes

CONLEX BUTYL Features

- ✔ Extremely flexible butyl sealing tape with high tack
- ✔ High-performance airtight tape
- ✔ Unmatched elasticity even under extreme humidity conditions and critical temperatures
- ✔ Polymer-modified butyl with excellent ageing resistance
- ✔ Solvent-free component, with very low emission
- ✔ Strong adhesion and high shear strength
- ✔ Resistant to frost
- ✔ Excellent adhesion to low temperatures
- ✔ Lifetime design – extremely durable



50MM X 10M
(2" X 32' 9")

150MM X 20M
(5 29/32" X 65 6/8")

200MM X 20M
(7 7/8" X 65 6/8")

300MM X 20M
(11 13/16" X 65 6/8")

APPLICATION TEMPERATURE RANGE

0°C TO +40 °C

SERVICE TEMPERATURE RANGE

-30°C TO +90°C

VERBOND



MULTI-PURPOSE ADHESIVE FOR CONSTRUCTION

VERBOND Features

- ✓ Hybrid technology – adhesive based on hybrid polymers
- ✓ Superior adhesion to various surfaces
- ✓ Solvent-free, Low VOC sealant
- ✓ Durable and flexible connections
- ✓ Excellent ageing resistance
- ✓ Good weather resistance
- ✓ Low shrinkage
- ✓ Not foaming
- ✓ Short drying time – 12 minutes
- ✓ Optimum UV stability

Fields of Application

- ✓ External & Internal use
- ✓ Bonding and sealing in the construction, industrial, and building areas
- ✓ Suitable for plaster, wood, stone, gypsum, PS foam, ceramics, rubber, PUR-foam, HPL, aluminium and tri laminate foil.
- ✓ Cracks and gaps filling.
- ✓ It can secure the assembly bonding of facades - sandwich elements and structural insulation products, ventilation and solar systems, wind power plants etc

CONTENTS: 310ML



OPERATION TEMPERATURE RANGE	-40 °C TO 100 °C / -40°F TO 212°F
PROCESSING TEMPERATURE	5°C TO 30°C / 41°F TO 86°F
COLOUR	WHITE

ACRABOND™

LIQUID



**CONTENTS:
310ML & 600ML**



LIQUID ADHESIVE FOR AIRTIGHT CONNECTIONS

Why Partel ACRABOND?

- ✓ Free of solvents - environmentally friendly
- ✓ High adhesion to most surfaces
- ✓ Durable and flexible airtight connections to DIN 4108-11
- ✓ Ageing resistant
- ✓ Good water resistance
- ✓ Frost-resistant
- ✓ Odourless

Fields of Application

- ✓ Indoor usage for airtight connections of airtight membranes including Partel VARA PLUS, IZOPERM PLUS and EXOPERM MONO to DIN 4108
- ✓ Suitable for plaster, untreated wood, concrete, stone, moisture and vapour barriers
- ✓ Surfaces must be clean, dry and free of dust and grease
- ✓ One surface must always be absorbent
- ✓ Not suitable for Sauna and swimming pool

ACRALINE™ ROLL



**12MM X 10M
(1/2" X 32'4")**

TAPE THICKNESS	3.00 MM
TEMPERATURE RANGE	-40°C TO +150°C (-104°F TO +302°F)
PROCESSING TEMPERATURE	> -20°C (> 68°F)

ADHESIVE ROLL FOR FLEXIBLE AIRTIGHT CONNECTIONS

Why Partel ACRALINE ROLL?

- ✓ High-performance joint adhesive roll with consistent thickness
- ✓ 100% solvent-free adhesive - environmentally friendly
- ✓ Immediate adhesive strength – no drying time necessary
- ✓ Acrylic adhesive with excellent ageing resistance
- ✓ Designed for productivity – it's quick and easy to apply directly from the roll
- ✓ High shear strength
- ✓ Withstands a damp climate
- ✓ Permanent, elastic sealing of airtight connections
- ✓ Can be processed even at temperatures as low as -20°C
- ✓ Frost resistant, withstands up to -40°C
- ✓ Adhesion to DIN 4108-11 N/25 mm

Fields of Application

- ✓ Internal and external use
- ✓ Airtight connections
- ✓ Bonds to all Partel membranes, concrete, masonry, timber, steel, PVC, plasterboards

ACRAPRIME™

SPRAY



SPRAY PRIMER FOR PRE-TREATMENT OF POROUS SURFACES

ACRAPRIME SPRAY Features

- ✔ Sprayable primer – fast and easy to apply
- ✔ Makes overhead and vertical work easier
- ✔ 3-position spray head: Low, Medium and High. It is possible to regulate the spray volume
- ✔ Short drying time
- ✔ Very low odour
- ✔ Creates strong adhesion for better results
- ✔ High initial tack, suitable for use in difficult conditions (cold, damp)
- ✔ Can be used with all Partel tapes and adhesives

Fields of Application

- ✔ External & Internal use
- ✔ ACRAPRIME SPRAY is used as a primer for porous surfaces like concrete, plaster, masonry, wood, fibre board and other building materials
- ✔ Apply ACRAPRIME SPRAY vertically. Chose the nozzle regulation and spray on the substrates at a distance of 20 cm

CONTENTS:
500ML



COLOUR	LIGHT YELLOW
BASE MATERIAL	SYNTHETIC MIX AND RESINS IN SOLVENT
PROCESSING TEMPERATURE PRIMER	FROM -5°C

ACRAPRIME™

LIQUID



ACRYLIC PRIMER FOR PRE-TREATMENT OF POROUS SURFACES

ACRAPRIME Features

- ✓ Creates strong adhesion
- ✓ Increased durability of airtight connections
- ✓ Very low-emission formulation - GEV EMICODE EC1 PLUS certification
- ✓ Quick-drying results in time-saving during application
- ✓ Re-closable, hermetically sealed cap that ensures longer product life
- ✓ 100% transparent formula after drying

CONTENTS: 1000ML



Fields of Application

- ✓ Internal and external use
- ✓ ACRAPRIME LIQUID can be used on a variety of surfaces, including concrete, plaster fireboards, stone, brick, masonry, fibrous soft fibre board substrates, wood products, and other building materials
- ✓ Ideal to be used with VARA SEAL, CONEXO MULTISEAL, and CONIZO tapes
- ✓ Apply ACRAPRIME LIQUID with a paintbrush or paint roller and allow to dry for approx. 14 minutes (depending on temperature). Apply the Partel tapes or adhesive products afterward, using pressure to ensure optimum seal.

STORAGE STABILITY	24 MONTHS
PROCESSING TEMPERATURE	-10°C TO +40°C (-14°F- +104°F)
MATERIAL	DISPERSION BASED ON POLYACRYLATE

FOAMSEAL™ B1 LIQUID



Fields of Application

- ✓ External & Internal use
- ✓ FOAMSeal Liquid B1 is ideal to fill and seal cracks and voids around windows, attic conversion, doors, partition walls, ventilation systems, joints in thermal insulation systems, pipelines etc.
- ✓ Versatile to be used on various building substrates - masonry, plaster, wood, concrete, bricks, plasterboards etc.

FIRE RETARDANT EXPANDING FOAM - CLASS B1

FOAMSEAL LIQUID B1 Features

- ✓ Tested for fire safety - a reliable solution for building professionals
- ✓ Excellent thermal and sound insulation
- ✓ Class B1-s1,d0 fire rating under the EN 13501-1 standard
- ✓ High yield: 40 liters per can
- ✓ Resistant to aging - not applicable to UV radiation
- ✓ Eco-friendly propellants
- ✓ Fast and easy processing with a PU foam gun
- ✓ Dimensionally stable
- ✓ Frost and water-resistant
- ✓ High bonding strength on multiple substrates
- ✓ Good flow resistance, also suitable for wide joints

CONTENTS: 750ML



COLOUR	LIGHT YELLOW
BASE MATERIAL	1-COMPONENT POLYURETHANE FOAM SEALANT. FREE FROM CFC, HCFC AND HFC.
RESILIENT AFTER (20°C/65 % RLF, MOISTENED)	APPROX. 3 HOURS - DEPENDING ON JOINT CONFIGURATION
DRIPPING BEHAVIOUR (DIN 4102-16)	"NO BURNING PARTICLES/DROPS DRIPPING OFF"
SKIN FORMING TIME	APPROX. 8 - 10 MINUTES

FOAMSEAL™ B3 LIQUID



EXPANDING FOAM FOR AIRTIGHT CONNECTIONS

FOAMSEAL LIQUID B3 Features

- ✔ Tested sound insulation 62 dB
- ✔ Excellent thermal insulation
- ✔ Fire behaviour acc. DIN 4102-1: class B3
- ✔ Excellent adhesion on various substrates
- ✔ High yield: 48 liters per can
- ✔ Very low emission – EC1 PLUS
- ✔ Fast and easy to install
- ✔ Dimensionally stable and frost resistant
- ✔ High bonding strength on various substrates
- ✔ Good flow resistance, also suitable for wide joints

**CONTENTS:
750ML**



Fields of Application

- ✔ Internal and External use - airtight connections
- ✔ Suitable for windows, attic conversion, doors, walls, corner joints, air conditioning and ventilation systems, pipelines, wooden structures
- ✔ Designed to fill and seal around gaps, cracks and penetrations
- ✔ Versatile to be used on various substrates like masonry, plaster, wood, concrete, aerated concrete, bricks, clinker, plasterboards, fiberboards, and many more.

HELPING HAND™

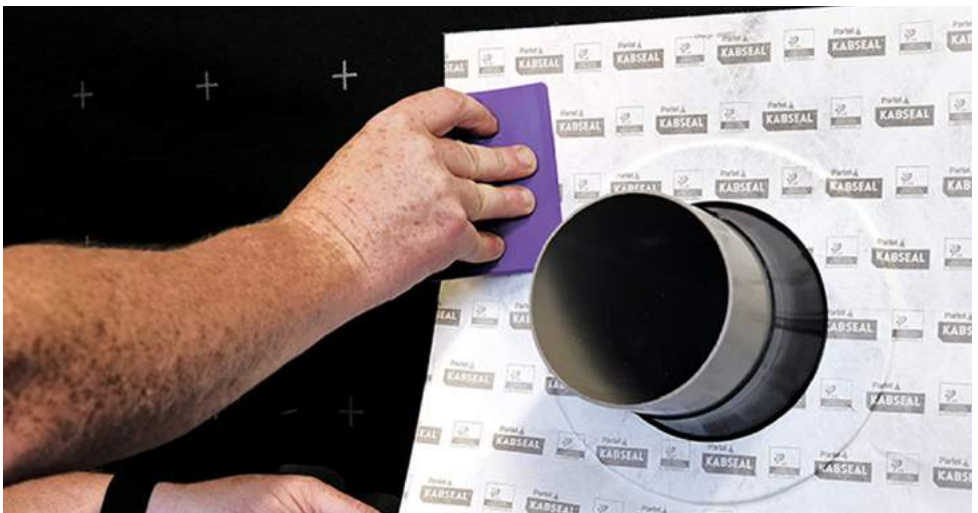
PROFESSIONAL TAPE PRESSURE APPLICATOR

Helping Hand Features



- ✔ Extremely durable and flexible
 - ✔ Consistent and prevents creases
 - ✔ Windproof and rainproof
 - ✔ Tapered edges for easy application of ParTel tapes
 - ✔ Protect your hands from getting sore and/or hot while rubbing down long stretches of tape
 - ✔ Can be used also on small difficult surfaces like corners
-

100MM X 80MM X 2MM



IZOTHERM COVER



Fields of Application

- ✓ Internal use
- ✓ Installation over downlights which are situated in ceilings to lofts and attics
- ✓ Meets the requirements for Building Regulations 2.3: C2 – Condensation; L1 – Insulation & Air Leakage; E1 – Sound Protection

BASE: 190 X 190MM
HEIGHT: 145MM

BASE: 186 X 186MM
HEIGHT: 95MM

CIRCULAR AIRTIGHT DOWNLIGHT COVER

Typically 25% of household energy wastage is lost through air leakage.

IZOTHERM Cover Features

The Partel airtight downlight cover is an innovative one-stop solution for achieving a safe, easy-to-install sealing system for down-lights.

- ✓ Reduce the risk of condensation
- ✓ Reduce draughts
- ✓ Improve air quality in living areas by reducing the air flow
- ✓ Works in tandem with heat recovery systems (controlled air flow)
- ✓ Can be fitted quickly and easily by anyone
- ✓ Can help reduce noise entering and escaping through downlights
- ✓ Compliant with the latest building regulations
- ✓ Manufactured from recyclable flame-retardant material
- ✓ Reduces fire risk from household storage items

PRODUCTS OVERVIEW



EXOPERM 150 MONO

NEXT GENERATION
MONOLITHIC MEMBRANE

- ⊗ Wind proof but diffusion open
- ⊗ Available with integrated tapes on both sides



CONEXO MULTISEAL

INTERIOR AND EXTERIOR
AIRTIGHT TAPE

- ⊗ Reinforced with elasticity
- ⊗ Split release backing



EXOPERM 200 MONO DURO

FIRE RESISTANT MONOLITHIC
MEMBRANE

- ⊗ Increased Fire Resistance – B1
- ⊗ High Level of UV Resistance



IZOPERM PLUS

OPTIMUM AIRTIGHT AND
VAPOUR CONTROL MEMBRANE

- ⊗ High performance airtightness
- ⊗ Reinforced for optimum strength

VARA ECO PLUS

SMART, PAPER-BASED
VCL FEATURING
HYGROVARIABLE
TECHNOLOGY

- ⊗ Suitable for blown wool insulations or solutions
- ⊗ Timber frame, masonry or steel construction

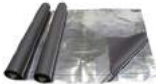


CONZO

INTERIOR WINDOW
INSTALLATION TAPE

- ⊗ High performance airtight tape
- ⊗ Split release backing

ECHOFOIL EXO



MONOLITHIC REFLECTIVE
MEMBRANE

- ⊗ Humidity controlling
- ⊗ Insulating and Breathable membrane



CONPRESeal 3V B61

MULTI-FUNCTIONAL
TAPE

- ⊗ Excellent thermal, sound, air and rain barrier



CONLEX BUTYL

FLEXIBLE BUTYL TAPE
WITH HIGH TACK

- ⊗ Easy to install
- ⊗ Elastic and durable

ACRABOND LIQUID

MULTIPURPOSE AIRTIGHT
ADHESIVE

- ⊗ Solvent free
- ⊗ Durable and flexible



ACRAPRIME SPRAY

SPRAY PRIMER FOR PRE-
TREATMENT OF POROUS
SURFACES

- ⊗ Fast and easy to apply
- ⊗ Permanently tacky



HELPING HAND

ASSISTS WITH
PRESSURE
APPLICATION
OF TAPES



VARA PLUS

MOISTURE VARIABLE AIRTIGHT MEMBRANE

- ✔ Variable range ensures optimum drying conditions
- ✔ Reinforced for optimum strength



IZOPERM PLUS

OPTIMUM AIRTIGHT AND VAPOUR CONTROL MEMBRANE

- ✔ High performance airtightness
- ✔ Reinforced for optimum strength



CONEXO SL MULTISEAL

INTERIOR AND EXTERIOR AIRTIGHT TAPE

- ✔ Reinforced with elasticity
- ✔ Split release backing



EXOPERM 150 MONO

NEXT GENERATION MONOLITHIC MEMBRANE

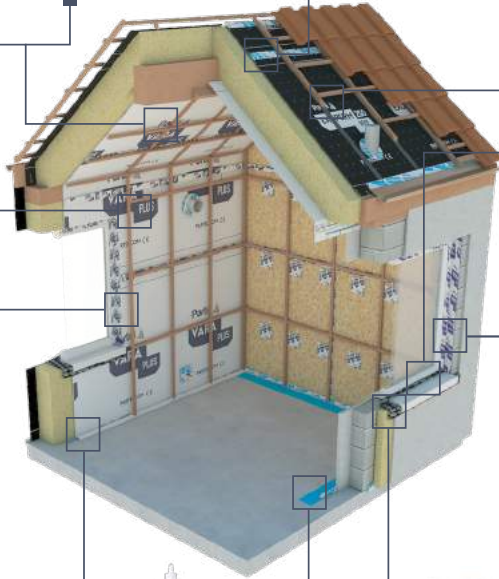
- ✔ Wind proof but diffusion open
- ✔ Available with integrated tapes on both sides



VARA FLUID

FLEXIBLE, AIRTIGHT, SMART VAPOUR CONTROL LAYER

- ✔ Fluid applied membrane
- ✔ Vapour permeable layer



ALMA VERT

RECYCLED PANEL FOR STRUCTURAL INSULATION

- ✔ Excellent thermal conductivity
- ✔ Highly efficient thermal break



CONPRESeal B61

JOINT SEALING TAPE

- ✔ Excellent sound and thermal insulation

CONIZO

INTERIOR WINDOW INSTALLATION TAPE

- ✔ High performance airtight tape
- ✔ Split release backing

ACRABOND LIQUID

MULTIPURPOSE AIRTIGHT ADHESIVE

- ✔ Solvent free
- ✔ Durable and flexible



ACRAPRIME LIQUID

PRIMER FOR POROUS SURFACES

- ✔ Quick drying
- ✔ Workable on cold surfaces



CONLEX BUTYL

FLEXIBLE BUTYL TAPE WITH HIGH TACK

- ✔ Easy to install
- ✔ Elastic and durable



VARA SEAL

INTERIOR AND EXTERIOR WINDOW TAPE

- ✔ Moisture variable
- ✔ Plasterable window

IRELAND & EUROPE
WWW.PARTEL.IE
SALES@PARTEL.IE
TEL: +353 (0)91 428 714

GREAT BRITAIN
WWW.PARTEL.CO.UK
SALES@PARTEL.CO.UK
TEL: 02037 401918

NORTH AMERICA
WWW.PARTEL.COM
SALES@PARTEL.COM
TEL: 888 487 1012

PRODUCED BY:
PARTEL
CLAREGALWAY CORPORATE
PARK,
CLAREGALWAY, CO. GALWAY,
IRELAND. H91 R85P
TEL: 0818 33 33 55



CONNECT WITH US

