

Data Centre



Pretium EDGE® MTP® Trunks



Pretium EDGE® Reverse Polarity Uniboot Duplex Jumper



Pretium EDGE® HD Solutions



Pretium EDGE® Modules



Closet Connector Housing (CCH)



CCH Pigtailed Splice Cassette



The UniCam® High-Performance Tool Kit (TKT-UNICAM-PFC)



JDSU OMK 35 - Handhelds Pocket Class Meter Series



Fiber Optic Cleaning

A CORNING FIBRE SOLUTION

- A1 Pretium EDGE® MTP® Trunks**
- Provide Backbone of Pretium EDGE Solution
 - Designed to interface with the Pretium EDGE or Plug & Play™ modules
 - Conform to TIA-568 Type-B polarity
- A2 Pretium EDGE® Reverse Polarity Uniboot Duplex Jumper**
- Allow quick and easy conversion from a TIA-568 A-B polarity to a TIA-568 A-A polarity without exposing the fibers or needing any tools
- A3 Pretium EDGE® HD Solutions**
- High-density pre-terminated optical cabling solutions offering industry-leading connector density
- A4 Pretium EDGE® Modules**
- Provide interface between the MTP® Connectors on the trunk and the LC duplex jumpers that will then connect directly into the electronics
 - LC duplex adapters feature hinged VFL-compatible shutters that move up and out of the way when the connector is inserted are specially designed to ensure that end faces of the connectors are never touched

- A5 Closet Connector Housing (CCH)**
- Provide interconnect or cross-connect capabilities between inside plant, riser or distribution cables and opto-electronics
- A6 CCH Pigtailed Splice Cassette**
- Pre-loaded and pre-routed for quick fusion splicing and easy modular management of connectorization within the housing
- A7 The UniCam® High-Performance Tool Kit (TKT-UNICAM-PFC)**
- A lightweight, handheld installation tool kit carefully designed to virtually eliminates human variability from the installation process

B JDSU OMK 35 Handhelds Pocket Class Meter Series

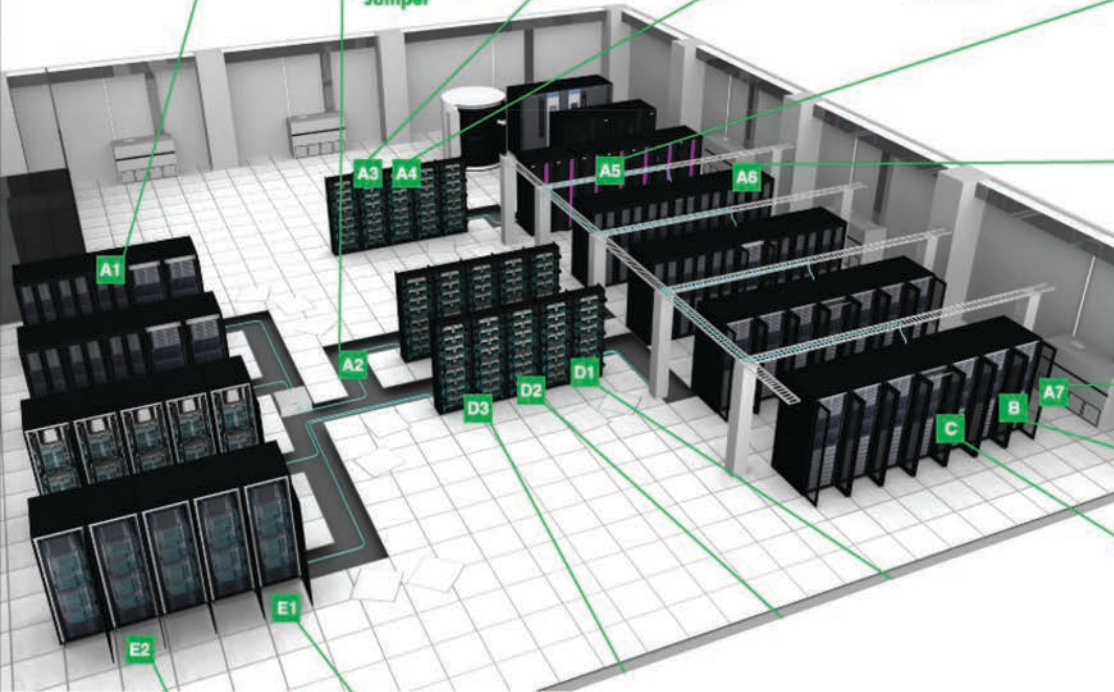
- Pocket-sized and rugged Power meter and Light source to install and maintain fiber optic networks

C FIBER OPTIC CLEANING

- **Sticks** - Wide range from splice & connector, bench-top CleanWipes & outdoor CleanStix
- **US Conec** - Mechanical cleaning tools for adaptor, end-face & unmated connectors

E ALLIED TELESIS NETWORK SOLUTION

- E1 Allied Telesis SwitchBlade® x8112/ x8106**
THE RESILIENT CORE OF HIGH AVAILABLE NETWORKS
- Designed to deliver high availability, wire-speed performance & 10G port count
 - Advanced features to meet key requirements in resiliency, reliability & high performance
 - Incredibly eco-friendly, utilizing high-efficiency power supplies & low-power chip set
 - Easily the most power efficient chassis in its class
- E2 Allied Telesis AT-DC2552XS**
HIGH PERFORMANCE, LOW LATENCY, TOP-OF-RACK DATA CENTER SWITCH
- Designed for virtualized data center and cloud environments with high density 10GbE and 40GbE connectivity
 - SFP+ slot x 48 ports and QSFP+ slot x 4 ports for high-bandwidth uplinks
 - Switching capacity 1280 Gbps
 - Front-to-back airflow, Hot-swappable power supply, fan modules, and optics modules (SFP+, QSFP)



Allied Telesis AT-DC2552XS



Allied Telesis SwitchBlade® x8112/ x8106