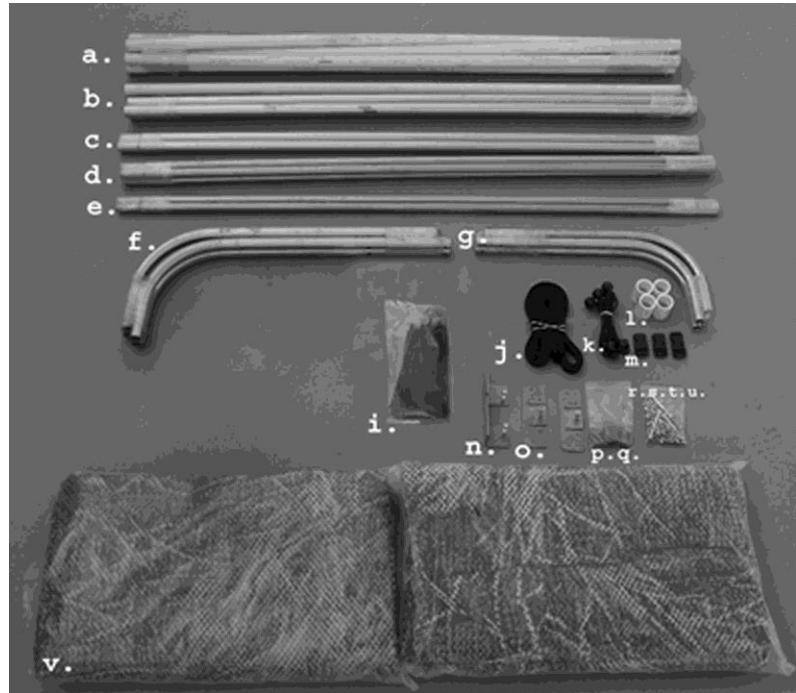


Shaggy Blind

-Installation Instructions-

Components

- a. 7 each 1" PVC
- b. 4 each 1" single swedge tubes
- c. 2 each 1" double swedge tubes
- d. 4 each 3/4" single swedge tubes
- e. 2 each 3/4" double swedge tubes
- f. 4 each 1" bent tubes
- g. 4 each 3/4" bent tubes
- i. 1 packet of 100 wire ties
- j. 1 bundle of 6 straps
- k. 1 bundle of 10 bungee cords
- l. 4 each 1" PVC couplers
- m. 3 each buckles
- n. 1 each front mount w/ nut
- o. 2 each rear mount with nut
- p. 6 each gunnel brackets
- q. 12 each strap brackets
- r. 1 each 5/16" drill driver
- s. 60 each #10 self-tapping screws
- t. 4 each 1/4" bolts
- u. 4 each 1/4" nuts
- v. 2 each 18' X 4' shaggy material



***Note – A swedged tube is one that has a reduced end so that the tubing fits together.**

Summary

You will need a tape measure, marker, drill, saw, 7/16" wrench and scissors.

- | | |
|------------------------|-----------------------------|
| 1 – Attach mounts. | 5 - Insert straps. |
| 2 - Attach 1" tubes. | 6 - Attach Shaggy panels. |
| 3 - Attach 3/4" tubes. | 7 - Insert PVC. |
| 4 - Attach brackets. | 8 – Set in Travel Position. |

Instructions - Read each instruction section carefully before cutting or drilling.

Instruction #1 - Attach Blind Mounts

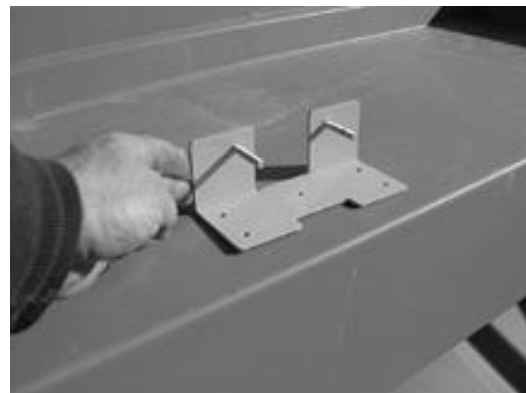
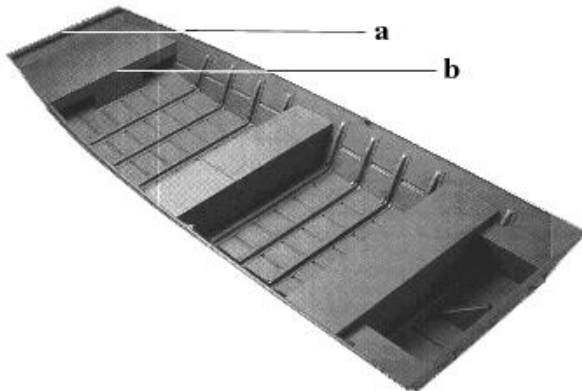
(Uses parts n, o, r and s)

There are two types of mounts. The rear mounts, which are attached to the transom, and the front mount, which is attached to the bow.

- 1- Transom:** The rear mounts can be attached to the inside (*photo left*) or outside (*photo right*) of the boat (Note that the bolt is at the top on the inside and is at the bottom on the outside). Measure 26" in from the left and right outside corner of the boat and mark the spots. Place the mounts on the marked spots and fasten to the boat using the #10 self-tapping screws.



- 2- Bow:** Depending on how much of the boat you want covered, you can attached the blind (a) at the front of the boat or (b) to the front of the bow platform. Many hunters leave the front bow section open for their dog and install at the (b) position. Modified V boats should use a crossbar which is sold separately. With the bolts pointing toward the inside of the boat, attach the front mount onto the center of the bow using the #10 self-tapping screws.



***Note - If your front deck is 65" or wider, cut the mount into two.**

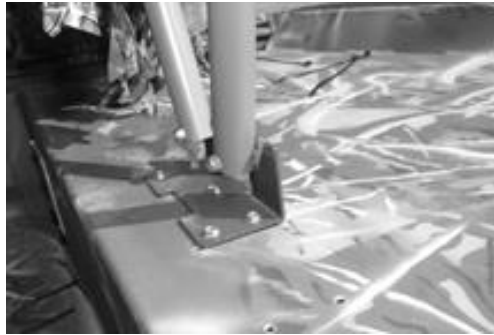
Instruction #2 Attach 1" Tubes

(Uses parts b, c, f, r and s)

Each 1" bent tube, which is predrilled, is 29" tall. If your boat is narrow, the blind can stick out past the side of the boat when in the travel position. Although we prefer the blind to be built as is, if there is a problem with narrow boats, you can cut the tubes down slightly. But remember, the blind is only as tall as it is wide. If you do cut the tubes shorter, drill new 5/16" holes in the 1" bent tubes for the bolts.

1- Slide the 1" bent tubes onto the bolts of the rear and front mounts and fasten with nuts.

***Note – It is best to leave only 1 or 2 threads sticking out. If longer, the bolts can catch and tear waders and clothing.**



2- Connect two of the 1" single swedge tubes and one 1" double swedge tube.

3- Repeat with the remaining 1" swedge tubes.



***Note – The tubes are sent long to fit all boats. In order to fit this assembly between the two 1" bent tubes, the single swedge tubes may need to be cut.**

4- Fasten each joint with a #10 self-tapping screw.

5- Slide straight assembly (the two single swedge tubes and the one double swedge tube) in between the bent tubes.

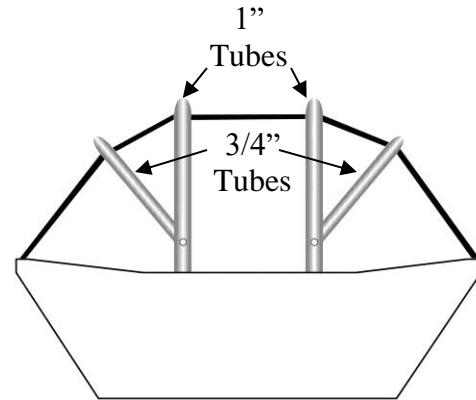
6- Repeat steps 2, 3 and 4 with remaining 1" tubes.

7- Raise the assembly to ensure it swings up easily, loosening the nut if need be.

Instruction #3 – Attach 3/4” Tubes

(Uses parts d, e, g, r, s, t and u)

The 3/4” swedge tubes extend outward from the blind to hold the material away from the boat, providing enhanced space inside the blind. This photo and illustration show how the tubes appear when installed and buckled in place with the straps.



- 1- Find the pre-drilled hole in the 1” bent tube.
- 2- Attach a 3/4” bent tube to the inside of the 1” bent tube using the 1/4” bolts and nuts.
- 3- Connect two the 3/4” single swedge tubes and one of the 3/4” double swedge tubes
- 4- Repeat with the remaining 3/4” swedge tubes.

***Note – The tubes are sent long to fit all boats. In order to fit this assembly between the two 3/4” bent tubes, the single swedge tubes may need to be cut.**

- 5- Fasten each joint with a #10 self-tapping screw.
- 6- Slide the straight assembly (the two single swedge tubes and the one double swedge tube) in between the bent tubes.
- 7- Repeat steps 1, 2, 3, 4, 5 and 6 with remaining 3/4” tubes.

Instruction #4 – Attach Strap and Gunnel Brackets

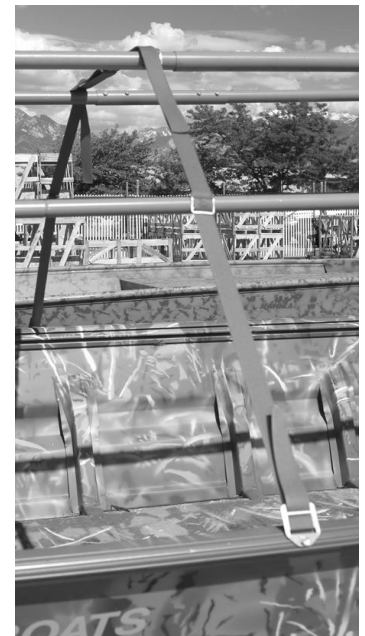
(Uses parts p, q, r and s)

Although the brackets are shown on the outside of the tube, it is best to attach them to the inside to prevent them from snagging on the Shaggy panels. Two straps are adequate on boats shorter than 17’.

- 1- Using a #10 self-tapping screw, attach three gunnel strap brackets to the gunnel on each side of the boat.
- *Note-The gunnel brackets can be attached to a T-Rail (See photo). However, the T-bolt is sold separately.**



- 2- Using a #10 self-tapping screw, attach the strap brackets to the inside of the swedge tubes.



Instruction #5 – Insert Straps

(Uses part m and j)

- 1- Thread strap through gunnel bracket (*Photo below left*).
- 2- Thread strap through the strap brackets (*Photo page four, lower right*).
- 3- Thread strap through buckles (*Photo below middle*).
- 4- Connect two corresponding straps together using buckles (*Photo below right*).

***Note – The buckles should sit at the top of the blind between the 1” swedge tubes.**



The top shooting slot is normally between 18” to 22”. Adjust the straps as needed to fit your boat.



Caution: The frame should not contact the engine battery cables or the engine starter contacts, and it should not pinch the fuel line. Check by moving the engine back and forth a little with the frame in this position.

Instruction #6 – Attach Shaggy Panels

(Uses parts i and v)

At the bottom of each 18’ x 4’ Shaggy panel is a sleeve which holds the 1” PVC. This weighs the panel down during windy conditions. The Shaggy panel should hang down along the outside of the boat but not in the water.

- 1- Wrap the non-sleeve side of a Shaggy panel around the 1” tube.
- 2- Position the panel so that it is a few inches above the water. For most boats, this is 10” below the gunnel.
- 3- Repeat on other side.
- 4- Attach the panels to the 1” tube using the wire ties.

***Note – Excess material can either be draped over the 1” tube or cut off (leave at least 5”).**



Instruction #7 – Insert PVC Tubes

(Uses parts a, i and l)

- 1- Connect 1” PVC, with the PVC couplers, to form two assemblies of three pieces.
- 2- Insert PVC into Shaggy panel sleeves.
- 3- Remove excess PVC with a saw.



- 4- Connect PVC to Shaggy panels using wire ties.

***Note – You may need to use the #10 self-tapping screws or PVC cement to hold the PVC together.**

Instruction #8 – Set in Travel Position

(k)

- 1- Roll Shaggy panel up toward top of the boat.
- 2- Lower blind frame to the gunnel.
- 3- Wrap bungee cords around frame and panels.



Maintenance

The life of your Shaggy blind depends on your care. The Shaggy material is tough, but will last longer if allowed to dry when it becomes wet. Raise the blind in the sun when your hunt is over. A boat cover also protect it when traveling and when in storage. If the Shaggy material becomes wet and freezes, you will need to thaw it out before raising it to prevent ripping and damage.

Thank you for ordering the Shaggy Blind. If you have any questions or need help please call (385) 695-3807.