

Grab Bar Trim Switch Kit- by Installation Guide



Step 1- Temporally disconnect battery

Step 2- Cap to Bar Adapter Installation

- Cut hole in the end of the grip and install adapter. Use cap to align insert so the switch is at the desired position, a screwdriver can be used to align insert if installed incorrectly.



Step 3- Running Wires

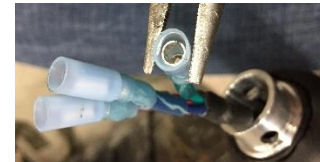
- Run wires through the grab bar to the electrical panel on the motor (tip- tape both ends of wire). The grab bar bolt may need to be temporarily removed.



Connect Bullet Connectors



Red Blue to Purple Wire - Power
Blue White to White Blue Wire- Up
Green White to White Green Wire- Down



If the bullet connectors are not fitting tightly; gently squeeze the female end so it fits tighter.



Routing Wires around the front of grab bar and across the back



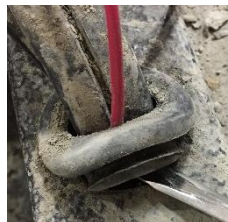
(Excel Boats) The best routing is through the gap in the back corner under the gunwale rail.



(Excel Boats) Remove rear navigation lights.



Use a guide wire to lead trim wires though route. (Excel Boats) have a tube with the navigation wires running in them. Use the same route.



(Excel Boats) Temporarily removing grommet will give room for wires. Reinstall grommet with wires running through it.



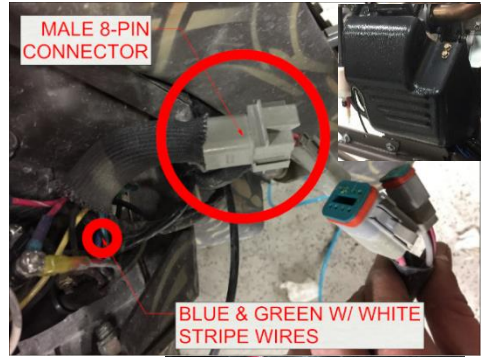
(Excel Boats) Run guide wire through wire housing and pull through trim switch wiring.

Optional Step- Cutting Wires to fit your boat (Doing this step will require a new ring terminal (provided) to be crimped on the red wire and new heat shrink (provided) to be put on the wires)

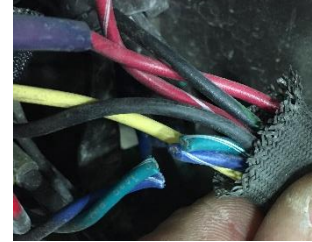
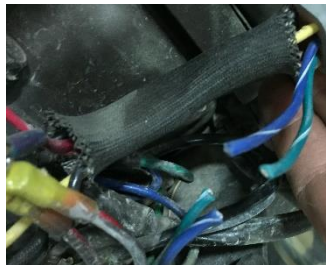
- Cut wires to desired length (leaving about a foot extra). Crimp a new ring terminal to the red wire, install new heat shrink around wires.

Step 4a (For motors Without Side Trim)- Wire Bridges

- Temporarily remove wire panel cover.
- Locate 8/12 pin connector that comes from the electrical panel. The male side has a blue with white stripe wire and green with white stripe wire coming out of it. These are the wires that need to be connected to the trim switch.
- Cut the blue with white stripe and green with white stripe wires just after the wire cover (**do not cut 12ga. solid green color and solid blue color wire**).



- Pull the wires out of the wire cover to give slack. If there is not enough slack a connector and extension is include.



- Place both ends of the green-white stripe wire and the green with white stripe wire coming from trim switch into the wire bridge. **Make sure** all 3 wires are **all the way** into the bridge. Smash the connector down evenly making sure it seats **all the way down** (channel locks or vise grips recommended). Repeat with blue with white stripe wires. Confirm wires are secure.



Step 4b (For motors With Side Trim)- Bullet Connectors

- Under the base plate of your Mud Buddy is a wire bundle with two bullet connectors, these will be used to connect you grab bar trim. On the end of the grab bar wire harness crimp the provided female bullet connectors onto the blue white wire and green white wire. Run the grab bar trim wires the same route as the side trim wires. Then connect the bullet connectors with the matching colors.

Step 5- Ring Terminal Power Wire

- On the wire panel there are two breakers with 4 terminals. The red wire with blue stripe coming from trim switch is the power wire. Install it on the far-left lowest terminal (3/8" nut).

