

# Fastgrass Blind

**-Installation Instructions-**

## Components

- a. 6 each ½” PVC
- b. 4 each 1” single swedge tubes
- c. 2 each 1” double swedge tubes
- d. 4 each 1” bent tubes
- e. 2 bundles of netting
- f. 1 each instruction manual
- g. 1 package 100 wire ties
- h. 1 bundle of 4 ropes
- i. 2 each rings
- j. 2 each snaps
- k. 1 each front mount w/ nut
- l. 2 each rear mount w/ nuts
- m. 1 each ¼” driver
- n. 1 each ½” PVC coupler
- o. 32 each screw clips
- p. 55 each 5/16” self-tapping screws
- q. 10 each Fastgrass sheets



**\*Note - A swedged tube is one that has a reduced end so that tubing fits together.**

## Summary

You will need a tape measure, marker, drill, 7/16” wrench and scissors.

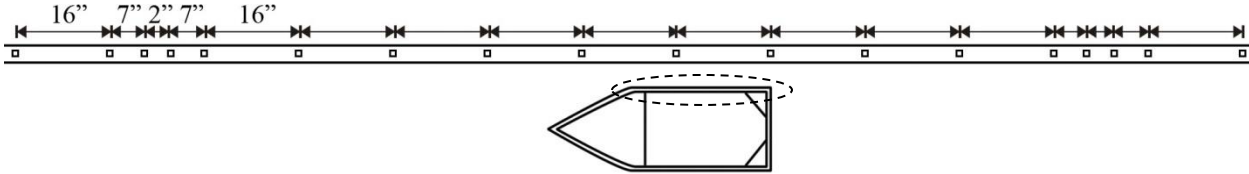
- 1- Attach ¾” PVC, netting and rope.
- 2- Attach blind mounts.
- 3- Attach 1” tubes.
- 4- Attach netting and rope.
- 5- Attach Fastgrass.
- 6- Set in travel position.

**Instructions** - Read each instruction section carefully before cutting or drilling.

**Instruction #1 – Attach PVC, Netting and Rope**

(Uses parts p, q, n, a, o, g, h and e)

- 1- With self-tapping screws, fasten 18 screw clips to each side gunnel as shown.



- 2- Place rope between each of the four 2” spaces with the knot located on the outside of the boat.

- 3- Connect ¾” PVC, with the PVC couplers, to form two assemblies of three pieces.

**\*Note – You may need to use the self-tapping screws or PVC cement to hold the PVC together.**



- 4- Lay connected PVC onto screw clips.

- 5- Loosely weave PVC through netting, leaving an equal amount of netting on each end.

**\*Note – Do not stretch the netting lengthwise. It should have squares, not diamonds.**

- 6- Remove excess PVC with a saw, leaving 2” on each end.

- 7- Secure PVC to screw clips using the wire ties.



This is what the rope will look like once the PVC has been laid on the gunnel.

## **Instruction #2 – Attach Blind Mounts**

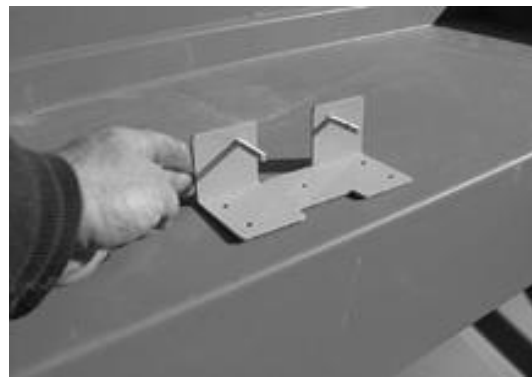
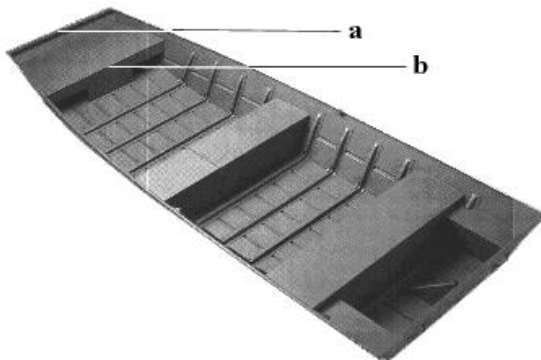
(Uses parts k, l, n and q)

There are two types of mounts. The rear mounts, which are attached to the transom, and the front mount, which is attached to the bow.

- 1- Transom:** The rear mounts can be attached to the inside (*photo left*) or outside (*photo right*) of the boat. (Note that the bolt is at the top on the inside and is at the bottom on the outside). Measure 26” in from the left and right outside corners of the boat and mark the spots. Place the mounts on the marked spots and fasten to the boat using the 5/16” self-tapping screws.



- 2- Bow:** Depending on how much of the boat you want covered, you can attach the blind (a) at the front of the boat or (b) to the front of the bow platform. Many hunters leave the front bow section open for their dog and install at the (b) position. Modified V boats should use a crossbar which is sold separately. With the bolts pointing toward the inside of the boat, attach the front mount onto the center of the bow using the 5/16” self-tapping screws.



**\*Note - If your front deck is 65” or wider, cut the mount into two.**

### **Instruction #3 – Attach 1” Tubes**

(Uses parts n, b, c, d, n and q)

- 1- Drill a hole ½” from the end of the bent tubes for front and back.
- 2- Slide the 1” bent tubes onto the bolts of the rear and front mounts and fasten with nuts.

**\*Note – It is best to leave only 1 or 2 threads sticking out. If longer, the bolts can catch and tear waders and clothing.**



- 3- Connect two of the 1” single swedge tubes and one 1” double swedge tube.

**\*Note – The tubes are sent long to fit all boats. In order to fit this assembly between the two 1” bent tubes, the single swedge tubes may need to be cut.**

- 4- Fasten each joint with a 5/16” self-tapping screw.
- 5- Slide straight assembly (the two single swedge tubes and the one double swedge tube) in between the bent tubes.
- 6- Repeat steps 3, 4 and 5 with remaining 1” tubes.
- 7- Raise the assembly to ensure it swings up easily.

### **Instruction #4 – Attach Netting and Rope**

(Uses parts i, j and g)

- 1- Tie snaps to ends of two pieces of rope.
- 2- Tie rings to ends of two pieces of rope.
- 3- Wrap rope once around 1” tube and secure with knot.
- 4- Connect ring and snap.

**\*Note – The opening at the top of the boat is typically 18” to 23” depending on your needs.**

- 5- Wrap netting over 1” tube.
- 6- Attach netting to 1” tube with wire ties.



### **Instruction #5 – Attach Fastgrass**

(Uses parts q and g)

- 1- Position the Fastgrass sheets over the netting so that they are a few inches above the water. For most boats, this is 6” to 8” below the gunnel.

**\*Note – Excess grass may need to be cut off the top of the grass sheet.**

- 2- Attach Fastgrass to 1” tube, to each other and to the PVC with wire ties.



## **Instruction #6 – Set in Travel Position**

- 1- Disconnect snaps and rings.
- 2- Tuck grass toward center of boat as you lower the blind frame.

**\*Note – After a few days in the travel position, the grass will naturally bend into this position.**

**\*Note – The frame should generally lie on top of the gunnel. It may protrude out past the side on narrower boats.**



## **Maintenance**

The life of your Fastgrass blind depends on your care. The Fastgrass is tough, but will last longer if allowed to dry when it becomes wet. Raise the blind in the sun when your hunt is over. A boat cover also protects it when traveling and when in storage. Damaged Fastgrass sheets are easily replaced and can be ordered from us in any quantity.

**Thank you for ordering one of the best designed and most effective water fowling blinds made. If you have any questions, please call (385) 695-3807.**