



# Certificate of Analysis

**CANNABUSINESS LABORATORIES, LLC**

**Customer:**

Element Health  
250 95th Street Box 546271  
Surfside, FL 33154

Sample ID **231122005**  
Order Number **CB231122004**  
Sample Name **25 mg/mL CBD in OHSO**

External Sample ID  
Batch Number **2332011.25**

Received Date **11/30/2023**  
COA Released **11/30/2023**

Product Type **Concentrate**  
Sample Type **Concentrate**

Comments

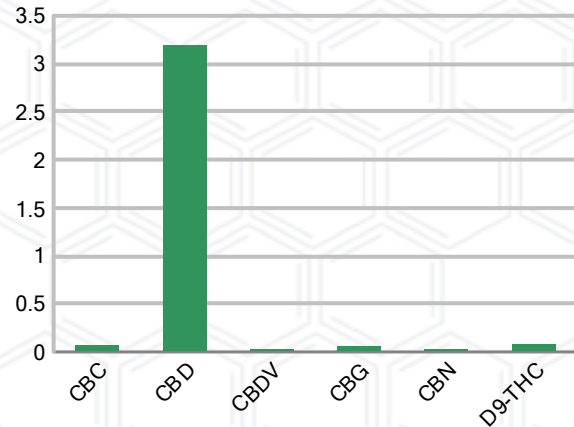
## CANNABINOID PROFILE

Analyte	LOQ (%)	% Weight	mg/mL
CBC	0.01	0.064	0.595
CBD	0.01	3.188	29.65
CBDa	0.01	ND	ND
CBDV	0.01	0.024	0.221
CBG	0.01	0.057	0.534
CBGa	0.01	ND	ND
CBN	0.01	0.024	0.221
d8-THC	0.01	ND	ND
d9-THC	0.01	0.078	0.723
THCa	0.01	ND	ND
<b>Total Cannabinoids</b>		<b>3.435</b>	<b>31.95</b>
<b>Total Potential THC</b>		<b>0.078</b>	<b>0.725</b>
<b>Total Potential CBD</b>		<b>3.188</b>	<b>29.65</b>
<b>Total Potential CBG</b>		<b>0.057</b>	<b>0.530</b>
<b>Ratio of Total Potential CBD to Total Potential THC</b>			<b>40.87 : 1</b>
<b>Ratio of Total Potential CBG to Total Potential THC</b>			<b>0.73 : 1</b>

## SAMPLE IMAGE



## CANNABINOIDS % Weight



\*Total Cannabinoids refers to the sum of all cannabinoids detected.  
 \*Total Potential CBD = (0.877 x CBDa) + CBD. \*Total Potential THC = (0.877 x THCa) + THC. \*Total Potential CBG = (0.877 x CBGa) + CBG.  
 \*Total Potential THC/CBD are calculated to take into account the loss of an acid group during decarboxylation.



*J. Hobgood*  
Laboratory Manager  
SIGNATURE

Jamie Hobgood  
LABORATORY MANAGER

11/30/2023 5:05 PM  
DATE

This product has been tested by CannaBusiness Laboratories using validated testing methodologies and a quality system. Values reported relate only to the product tested. CannaBusiness Laboratories makes no claims as to the efficacy, safety, or other risks associated with any detected or non-detected levels of any compounds reported herein. This Certificate shall not be reproduced except in full, without the written permission of CannaBusiness Laboratories. Photo is of sample received by the lab and may vary from final packaging. The results apply to the sample as received.





# Certificate of Analysis

## CANNABUSINESS LABORATORIES, LLC

### Customer

Element Health  
250 95th Street Box 546271  
Surfside, FL 33154



**Sample Name:** 25 mg/mL CBD in OHSO

**Sample ID:** 231122005  
**Order Number:** CB231122004  
**Product Type:** Concentrate  
**Sample Type:** Concentrate  
**Received Date:** 11/30/2023  
**Batch Number:** 2332011.25

**COA released:** 11/30/2023 5:05 PM

Potency (mg/mL)			
Date Tested: 11/20/2023		Method: CB-SOP-028	
Instrument:			

<b>0.078 %</b>	<b>3.188 %</b>	<b>3.435 %</b>	<b>31.95 mg/mL</b>
Total THC	Total CBD	Total Cannabinoids	Total Cannabinoids

Analyte	Result	Units	LOQ	Result	Units
CBC (Cannabichromene)	0.064	%	0.010	0.595	mg/mL
CBD (Cannabidiol)	3.188	%	0.010	29.65	mg/mL
CBDa (Cannabidiolic Acid)	ND	%	0.010	ND	mg/mL
CBDV (Cannabidivarin)	0.024	%	0.010	0.221	mg/mL
CBG (Cannabigerol)	0.057	%	0.010	0.534	mg/mL
CBGa (Cannabigerolic Acid)	ND	%	0.010	ND	mg/mL
CBN (Cannabinol)	0.024	%	0.010	0.221	mg/mL
D8-THC (D8-Tetrahydrocannabinol)	ND	%	0.010	ND	mg/mL
D9-THC (D9-Tetrahydrocannabinol)	0.078	%	0.010	0.723	mg/mL
THCa (Tetrahydrocannabinolic Acid)	ND	%	0.010	ND	mg/mL

Foreign Material	Result	Note
Date Tested: 11/21/2023	Absence	

Water Activity	Result	Units	LOQ	Result
Date Tested: 11/28/2023	0.249	Aw	0.030	

Terpenoids					
Date Tested: 11/22/2023		Method: CB-SOP-026			
Instrument:					

Analyte	Result	Unit	LOQ	Result	Unit
alpha-Bisabolol	<LOQ	mg/g	0.100	<LOQ	%
alpha-humulene	<LOQ	mg/g	0.100	<LOQ	%
alpha-pinene	<LOQ	mg/g	0.100	<LOQ	%
alpha-terpinene	<LOQ	mg/g	0.100	<LOQ	%
beta-caryophyllene	<LOQ	mg/g	0.100	<LOQ	%
Beta-myrcene	<LOQ	mg/g	0.100	<LOQ	%
Beta-pinene	<LOQ	mg/g	0.100	<LOQ	%
cis-Nerolidol	<LOQ	mg/g	0.100	<LOQ	%
Camphene	<LOQ	mg/g	0.100	<LOQ	%
d-Limonene	<LOQ	mg/g	0.100	<LOQ	%
delta-3-Carene	<LOQ	mg/g	0.100	<LOQ	%
Eucalyptol	<LOQ	mg/g	0.100	<LOQ	%
gamma-Terpinene	<LOQ	mg/g	0.100	<LOQ	%
Geraniol	<LOQ	mg/g	0.100	<LOQ	%
Guaiol	<LOQ	mg/g	0.100	<LOQ	%
Isopulegol	<LOQ	mg/g	0.100	<LOQ	%
Linalool	<LOQ	mg/g	0.100	<LOQ	%
Ocimene (mixture of isomers)	<LOQ	mg/g	0.100	<LOQ	%
p-Isopropyltoluene (p-Cymene)	<LOQ	mg/g	0.100	<LOQ	%
trans-beta-Ocimene	<LOQ	mg/g	0.100	<LOQ	%
trans-Nerolidol	<LOQ	mg/g	0.100	<LOQ	%
Terpinolene	<LOQ	mg/g	0.100	<LOQ	%

Pesticides		
Date Tested: 11/22/2023	Method: CB-SOP-025	Instrument:

Analyte	Result	Units	LOQ	Result	Analyte	Result	Units	LOQ	Result
Bifenthrin	ND	ppm	0.100		Boscalid	ND	ppm	0.010	
Carbaryl	ND	ppm	0.010		Carbofuran	ND	ppm	0.010	
Chlorantraniliprole	ND	ppm	0.010		Chlorpyrifos	ND	ppm	0.010	
Clofentezine	ND	ppm	0.010		Coumaphos	ND	ppm	0.010	
Daminozide	ND	ppm	0.010		Diazinon	ND	ppm	0.010	
Dichlorvos	ND	ppm	0.100		Dimethoate	ND	ppm	0.010	
Etofenprox	ND	ppm	0.010		Etoazole	ND	ppm	0.010	
Fenhexamid	ND	ppm	0.010		Fenoxycarb	ND	ppm	0.010	
Fenpyroximate	ND	ppm	0.010		Fipronil	ND	ppm	0.010	
Flonicamid	ND	ppm	0.100		Fludioxonil	ND	ppm	0.010	
Hexythiazox	ND	ppm	0.010		Imazalil	ND	ppm	0.010	
Imidacloprid	ND	ppm	0.010		Malathion	ND	ppm	0.010	
Metalaxyl	ND	ppm	0.010		Methiocarb	ND	ppm	0.010	
Methomyl	ND	ppm	0.010		Myclobutanil	ND	ppm	0.010	
Naled	ND	ppm	0.010		Oxamyl	ND	ppm	0.010	

NT = Not tested, ND = Not detected; LOQ = Limit of Quantitation; <LOQ = Detected; >ULOL = Above upper limit of linearity; CFU/g = Colony forming units per 1 gram; TNTC = Too numerous to count

This product has been tested by Cannabusiness Laboratories using validated testing methodologies and a quality system. Values reported relate only to the product tested. Cannabusiness Laboratories makes no claims as to the efficacy, safety, or other risks associated with any detected or non-detected levels of any compounds reported herein. This Certificate shall not be reproduced except in full, without the written permission of Cannabusiness Laboratories. Photo is of sample received by the lab and may vary from final packaging. The results apply to the sample as received.



# Certificate of Analysis

## CANNABUSINESS LABORATORIES, LLC

Pesticides								
Date Tested: 11/22/2023			Method: CB-SOP-025			Instrument:		

Analyte	Result	Units	LOQ	Result	Analyte	Result	Units	LOQ	Result
Pacllobutrazol	ND	ppm	0.010		Phosmet	ND	ppm	0.010	
Prallethrin	ND	ppm	0.010		Propiconazole	ND	ppm	0.010	
Propoxur	ND	ppm	0.010		Pyrethrin I	ND	ppm	0.010	
Pyrethrin II	ND	ppm	0.010		Pyridaben	ND	ppm	0.010	
Spinetoram	ND	ppm	0.010		Spiromesifen	ND	ppm	0.010	
Spirotetramat	ND	ppm	0.010		Tebuconazole	ND	ppm	0.010	
Thiacloprid	ND	ppm	0.010		Thiamethoxam	ND	ppm	0.010	
Trifloxystrobin	ND	ppm	0.010		Ethoprophos	ND	ppm	0.010	
Kresoxym-methyl	ND	ppm	0.010		Permethrins	ND	ppm	0.010	
Piperonyl Butoxide	ND	ppm	0.010		Spinosyn A	ND	ppm	0.010	
Spiroxamine-1	ND	ppm	0.010		AbamectinB1a	ND	ppm	0.010	
Spinosyn D	ND	ppm	0.010		Acephate	ND	ppm	0.010	
Acetamiprid	ND	ppm	0.010		Aldicarb	ND	ppm	0.010	
Azoxystrobin	ND	ppm	0.010		Bifenazate	ND	ppm	0.010	

Moisture Content								
Date Tested: 11/28/2023			Method: CB-SOP-020			Instrument:		

Analyte	Result	Units	LOQ	Result	Analyte	Result	Units	LOQ	Result
Percent Moisture	4	%	0.010						

Mycotoxins								
Date Tested: 11/22/2023			Method: CB-SOP-025			Instrument:		

Analyte	Result	Units	LOQ	Result	Analyte	Result	Units	LOQ	Result
Ochratoxin A	ND	ppm	0.010		Aflatoxin B1	ND	ppm	0.010	
Aflatoxin G2	ND	ppm	0.010		Aflatoxin B2	ND	ppm	0.010	
Aflatoxin G1	ND	ppm	0.010						

Metals								
Date Tested: 11/22/2023			Method: CB-SOP-027			Instrument:		

Analyte	Result	Units	LOQ	Result	Analyte	Result	Units	LOQ	Result
Arsenic	<LOQ	ppm	0.500		Cadmium	<LOQ	ppm	0.500	
Lead	<LOQ	ppm	0.500		Mercury	<LOQ	ppm	3.000	

Microbial								
Date Tested: 11/29/2023			Method:			Instrument:		

Analyte	Result	Units	LOQ	Result	Analyte	Result	Units	LOQ	Result
STEC (E. coli)	Negative				Salmonella	Negative			
L. monocytogenes	Negative				Yeast/Mold (qPCR)	Absence			

Residual Solvent								
Date Tested: 11/22/2023			Method: CB-SOP-032			Instrument:		

Analyte	Result	Units	LOQ	Result	Analyte	Result	Units	LOQ	Result
1-4 Dioxane	<LOQ	ppm	29		2-Butanol	<LOQ	ppm	175	
2-Ethoxyethanol	<LOQ	ppm	24		2-Methylpentane	<LOQ	ppm	87	
3-Methylpentane	<LOQ	ppm	87		2-Propanol	<LOQ	ppm	350	
Cyclohexane	<LOQ	ppm	146		Ether	<LOQ	ppm	350	
Ethylbenzene	<LOQ	ppm	81		Acetone	<LOQ	ppm	350	
Methylbutane	<LOQ	ppm	350		Isopropyl Acetate	<LOQ	ppm	175	
n-Heptane	<LOQ	ppm	350		n-Hexane	<LOQ	ppm	87	
n-Pentane	<LOQ	ppm	350		Tetrahydrofuran	<LOQ	ppm	54	
Acetonitrile	<LOQ	ppm	123		Ethanol	<LOQ	ppm	350	

NT = Not tested, ND = Not detected; LOQ = Limit of Quantitation; <LOQ = Detected; >ULOL = Above upper limit of linearity; CFU/g = Colony forming units per 1 gram; TNTC = Too numerous to count

This product has been tested by CannaBusiness Laboratories using validated testing methodologies and a quality system. Values reported relate only to the product tested. CannaBusiness Laboratories makes no claims as to the efficacy, safety, or other risks associated with any detected or non-detected levels of any compounds reported herein. This Certificate shall not be reproduced except in full, without the written permission of CannaBusiness Laboratories. Photo is of sample received by the lab and may vary from final packaging. The results apply to the sample as received.



# Certificate of Analysis

## CANNABUSINESS LABORATORIES, LLC

**Residual Solvent**  
 Date Tested: 11/22/2023      Method: CB-SOP-032      Instrument:

Analyte	Result	Units	LOQ	Result	Analyte	Result	Units	LOQ	Result
Ethyl acetate	<LOQ	ppm	175		o-Xylene	<LOQ	ppm	81	
m+p-Xylene	<LOQ	ppm	163		Methanol	<LOQ	ppm	250	
Methylene Chloride	<LOQ	ppm	90		Toluene	<LOQ	ppm	67	



*J. Hobgood*  
 Laboratory Manager

Jamie Hobgood

11/30/2023 5:05 PM

SIGNATURE

DATE

NT = Not tested, ND = Not detected; LOQ = Limit of Quantitation; <LOQ = Detected; >ULOL = Above upper limit of linearity; CFU/g = Colony forming units per 1 gram; TNTC = Too numerous to count

This product has been tested by CannaBusiness Laboratories using validated testing methodologies and a quality system. Values reported relate only to the product tested. CannaBusiness Laboratories makes no claims as to the efficacy, safety, or other risks associated with any detected or non-detected levels of any compounds reported herein. This Certificate shall not be reproduced except in full, without the written permission of CannaBusiness Laboratories. Photo is of sample received by the lab and may vary from final packaging. The results apply to the sample as received.