

SCREEN PRINTER STARTER PRESS



SETUP GUIDE

MEET THE MAKER

As an avid crafter and DIY enthusiast, I've always enjoyed crafting personalized t-shirts and gear. Pigskins & Pigtails began in 2010 under the glow of Friday Night Lights. My husband was a high school football coach (the "pigskins"), and I'd take our young daughters (the "pigtails") to the games, proudly sporting custom shirts I had crafted.

After years of using iron-on vinyl for creating these pieces, I stumbled upon a more efficient method. I realized that the vinyl I was accustomed to cutting with my machine could be applied to a screen printing frame instead. This not only streamlined the setup process but also enabled me to embark on screen printing right from the comfort of my home, without the need for chemicals or a dark room.

As I delved deeper into screen printing, I gradually acquired various pieces of equipment to enhance my efficiency. However, I found most of these additions to be bulky and impractical for my small-scale, home-based setup.

The creation of this screen printing press embodies the culmination of these experiences. It's not only smaller and more portable than my previous equipment but also boasts the ability to handle multi-color designs, all within a remarkably efficient footprint.

I'm thrilled to pass on this tool to you and can't wait to see the creations you'll bring to life with it.



Jennifer Sanderson

Pigskins & Pigtails

www.PigskinsandPigtails.com

Follow me @pigskinsandpigtails on
Instagram | TikTok | YouTube | Facebook



LET'S GET STARTED!



WHAT'S IN THE BOX

3

Description of parts and hardware kits to be used for assembly.



ASSEMBLY INSTRUCTIONS

9

Step-by-step instructions to assemble the press.



PRESS SETUP

22

Once your press is assembled, it's time to align your screen and prepare the press for your first project.



WARRANTY

25

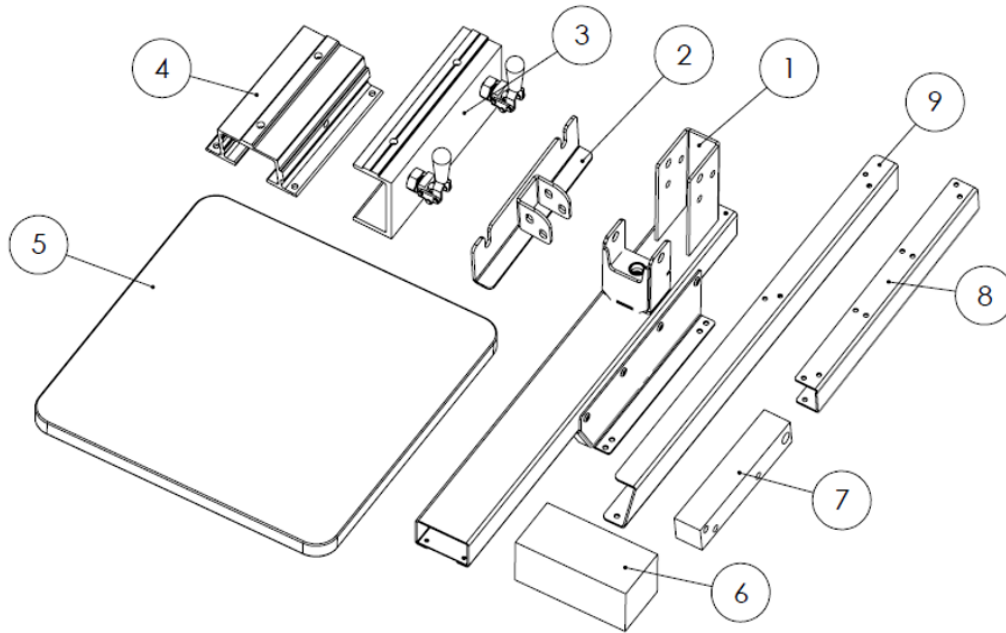
Watch the beginner tutorial video for tips on getting started with your new press.

**Scan QR Code to Watch
Assembly & Setup
Video Series**

or go to www.pigskinsandpigtails.com/press-setup



WHAT'S IN THE BOX



TAG	ITEM	QTY.
①	MAIN PRESS BASE	1
②	CLAMP ATTACHMENT BRACKET	1
③	SCREEN CLAMPING HEAD	2
④	PLATEN BRACKET	1
⑤	14" X 14" PLATEN	1
⑥	HARDWARE KIT	1
⑦	MAIN PRINT ARM ASSEMBLY	1
⑧	LOWER CROSS BARS	2
⑨	MAIN LEGS (LEFT HAND & RIGHT HAND)	2

TOOLS REQUIRED



Two 9/16" wrenches



Two 1/2" wrenches



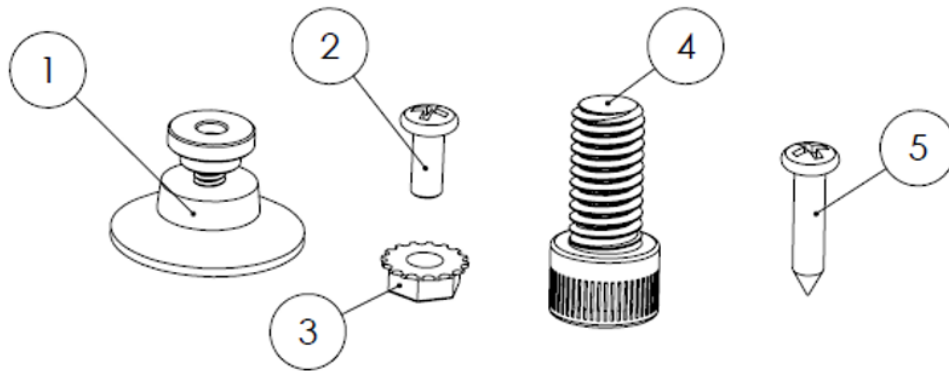
One Phillips Screwdriver



PRSA-PPKIT1

Press Mounting Hardware Kit

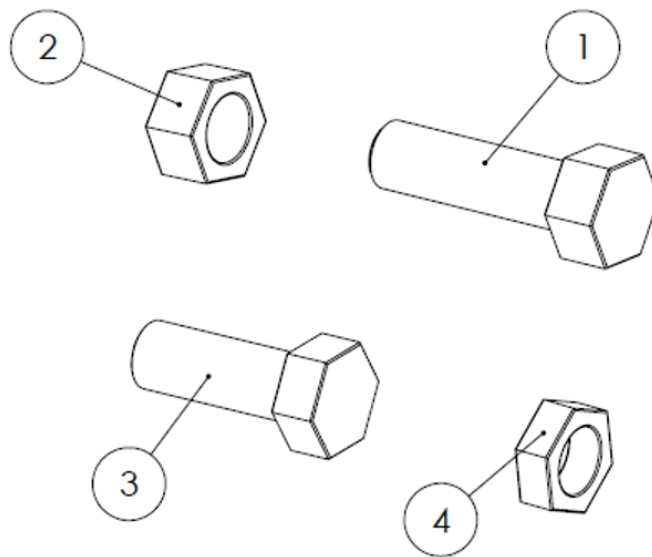
TAG	ITEM	DESCRIPTION	QTY.
①	PRCO-SUCCUP1	SUCTION CUP MOUNTING WITH HAND NUT	4
②	PRHD-SCM#8NF3/8	#8-32X3/8" PHILLIPS PAN HEAD MACHINE SCREW	24
③	PRHD-KN#8NF	#8-32 KEPS NUT	24
④	PRHD-SCP3/8NCX3/4	3/8-16 X 3/4" LONG SOCKET CAP SCREW	3
⑤	PRHD-SCW12X3/4PAN	#12 X 3/4" PHILLIPS SCREW	4



PRSA-PPKIT2

Press Registration Gate Hardware Kit

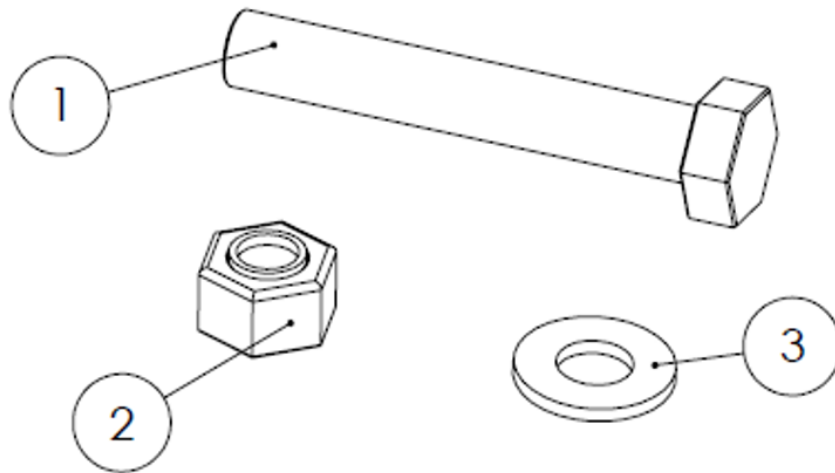
TAG	ITEM	DESCRIPTION	QTY.
①	PRHD-HC3/8NC1-1/2NYBLK	3/8-16 X 1-1/2" NYLON HEX CAP SCREW	2
②	PRHD-HN3/8NCGR5ZC	3/8-16 HEX NUT	2
③	PRHD-HC3/8NC1GR5ZC	3/8-16 X 1 HEX CAP SCREW	1
④	PRHD-JN3/8NCGR5ZC	3/8-16 JAM NUT	1



PRSA-PPKIT3

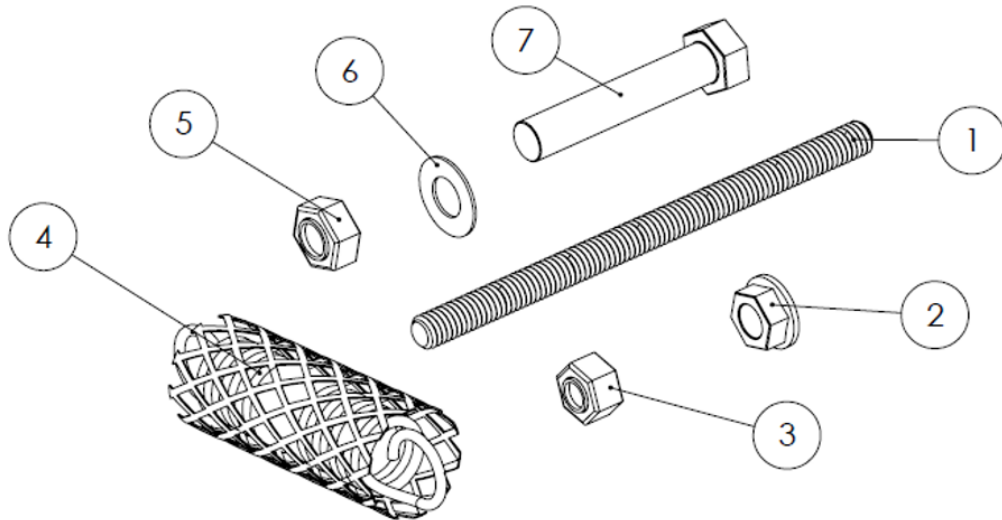
Color Arm Hinge Hardware Kit

TAG	ITEM	DESCRIPTION	QTY.
①	PRHD-HC5/16NF2GR8ZY	5/16-24 X 2 HEX CAP SCREW	1
②	PRHD-LNYN5/16NFGR5ZC	5/16-24 LOWPRO NYLOC NUT	1
③	PRHD-WA1/4USSGR5ZC	1/4" FLAT WASHER	2



Spring Rod Hardware Kit

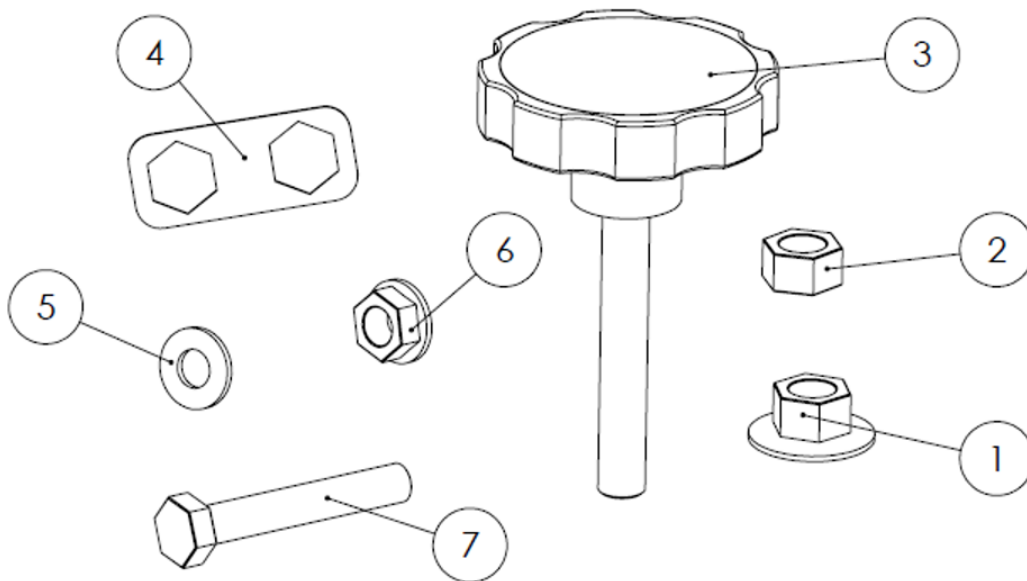
TAG	ITEM	DESCRIPTION	QTY.
①	PRHD-STD5/16NCX4-1/2	THREADED STUD 5/16-18 X 4-1/2" LONG	2
②	PRHD-FLN5/16NCGR5ZC	5/16-18 FLANGED WHIZ NUT	4
③	PRHD-NYN5/16NCGR5ZC	5/16-18 NYLOC NUT	4
④	PRCO-SPGPP1	EXTENSION SPRING 7/8" X 2-7/8" LONG	2
⑤	PRHD-LNYN3/8NCGR5ZC	3/8-16 LOWPRO NYLOC NUT	1
⑥	PRHD-WA3/8SAE-SS	3/8 SAE FLAT WASHER	2
⑦	PRHD-HC3/8NC2GR5ZC	3/8-16 X 2 HEX CAP SCREW	1



PRSA-PPKIT5

Screen Clamp Hardware Kit

TAG	ITEM	DESCRIPTION	QTY.
①	PRHD-KN3/8NC1WSHR	3/8-16 KEPS NUT WITH CONICAL WASHER	4
②	PRHD-HN3/8NCGR5ZC	3/8-16 HEX NUT	4
③	PRCO-KNBFLT3/8NC3ML	3/8-16 X 3 CLAMP KNOB	4
④	MFLS-PPCLIP	TILT BRACKET NUT RETAINING CLIP	1
⑤	PRHD-WA1/4USSGR5ZC	1/4 USS FLAT WASHER	4
⑥	PRHD-FLN5/16NCGR5ZC	5/16-18 FLANGED WHIZ NUT	2
⑦	PRHD-HC5/16NC2GR2ZC	5/16-18 X 2 HEX CAP SCREW	2

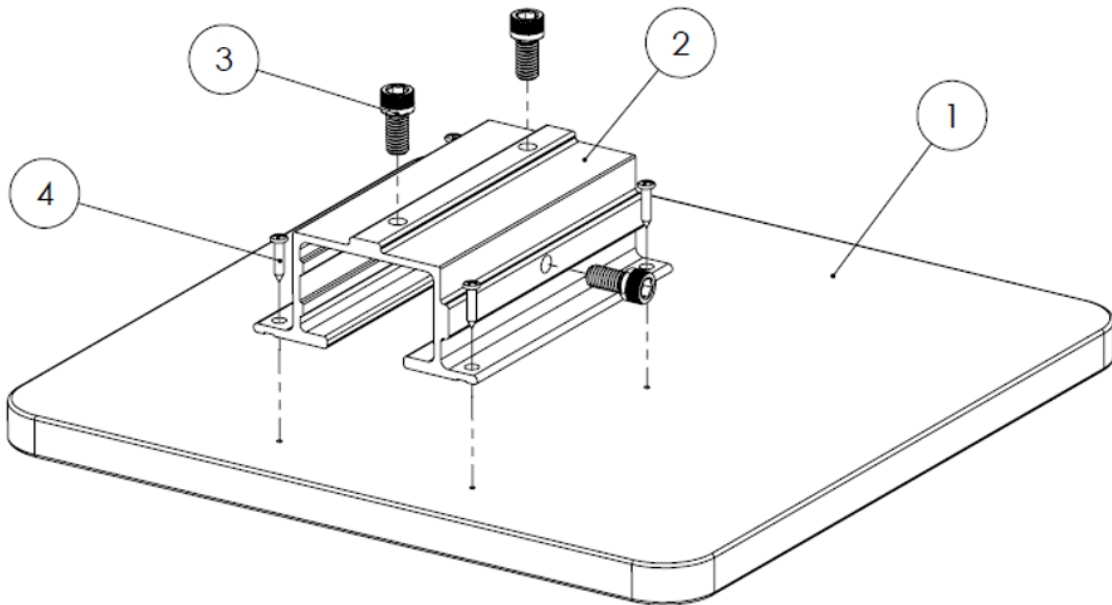


STEP 1

Use Hardware Kit PPKIT 1

Attach the platen bracket ② to the platen ① in the pre-drilled pilot holes with the included #12 screws ④. Install the 3/8" platen bolts ③. Nuts do not need to be tightened.

TAG	ITEM	DESCRIPTION	QTY.
①	PLWD-14X14PP	14" X 14" PLATEN	1
②	MFMS-WINBRKTLOW	PLATEN BRACKET	1
③	PRHD-SCP3/8NCX3/4	3/8-16 X 3/4" LONG SOCKET CAP SCREW	3
④	PRHD-SCW12X3/4PAN	#12 X 3/4" PHILLIPS SCREW	4



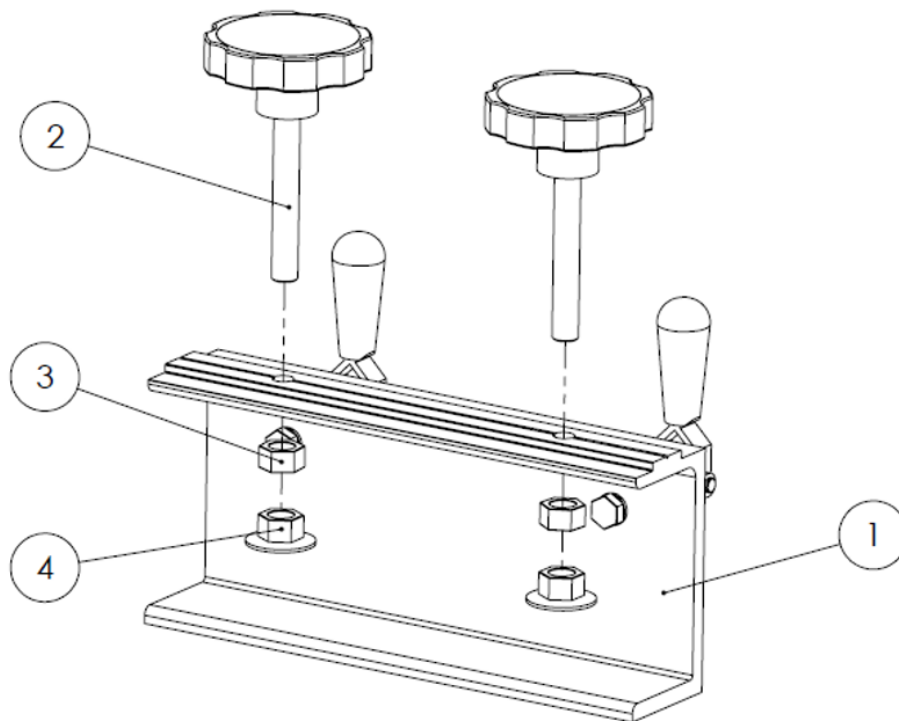
STEP 2

Use Hardware Kit PPKIT5

Two 9/16" wrenches are required.

Install the clamping knobs ② into the screen clamping head ①. Make sure the knob stud ② does not protrude beyond the lower clamping conical washer ④. Lock the nut ③ together in opposing directions to fix the clamping nuts to the stud.

TAG	ITEM	DESCRIPTION	QTY.
①	MFMS-PPCPHED	SCREEN CLAMPING HEAD	2
②	PRCO-KNBFLT3/8NC3ML	CLAMPING KNOBS	4
③	PRHD-HN3/8NCGR5ZC	3/8-16 HEX NUT	4
④	PRHD-KN3/8NC1WSHR	3/8-16 KEPS NUT WITH CONICAL WASHER	4



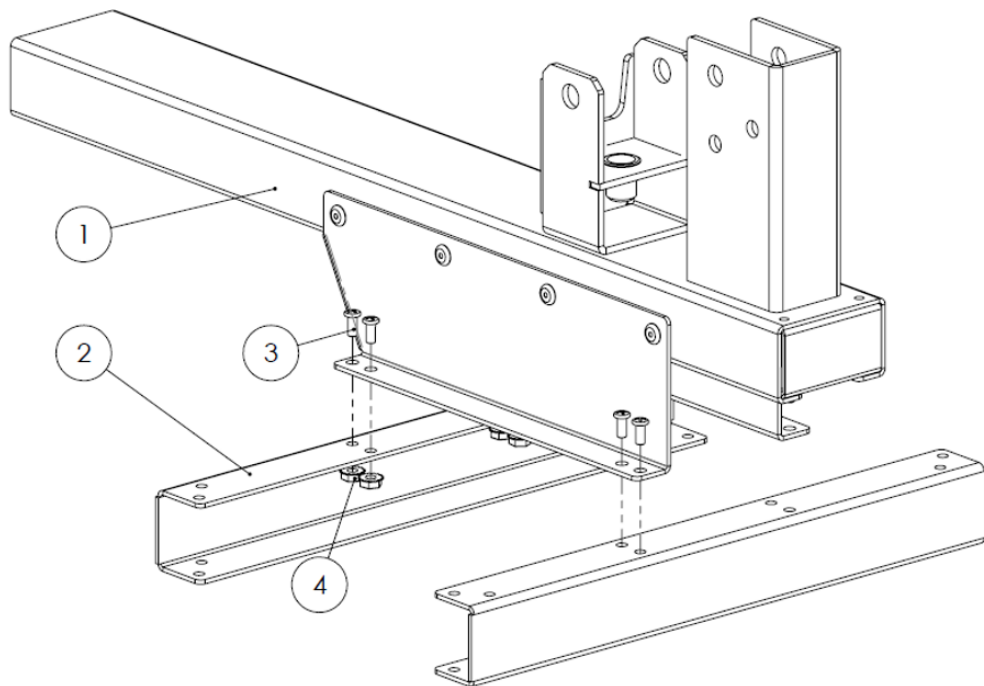
STEP 3

Use Hardware Kit PPKIT 1

One Phillips screwdriver is required.

Attach the lower cross bars ② to the main press base ① using the supplied #8-32 hardware ③. Hold the nut ④ in place with finger until the teeth catch on the locking nut. Do not fully tighten hardware at this step.

TAG	ITEM	DESCRIPTION	QTY.
①	MFPD-PPBDY	MAIN PRESS BASE	1
②	MFPD-PPXBR	LOWER CROSS BARS	2
③	PRHD-SCM#8NF3/8	#8-32X3/8" PHILLIPS PAN HEAD MACHINE SCREW	8
④	PRHD-KN#8NF	#8-32 KEPS NUT	8



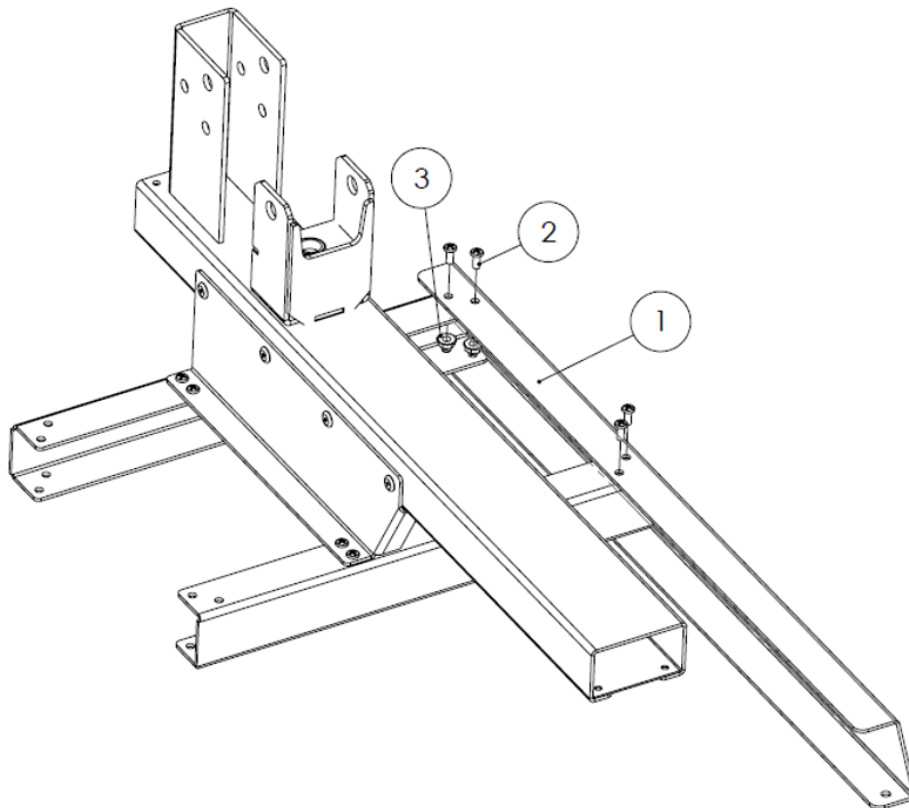
STEP 4

Use Hardware Kit PPKIT 1

One Phillips screwdriver is required.

Attach the press legs ① to the lower cross bars using the supplied #8-32 hardware ②. Ensure correct placement of the LH & RH legs. Hold the nut ③ in place with finger until the teeth catch on the locking nut. Repeat for the bottom set of mounting holes. Fully tighten all hardware once installed as well as the hardware from the previous step.

TAG	ITEM	DESCRIPTION	QTY.
①	MFPD-PPLEG	PRESS LEGS (LH & RH)	1
②	PRHD-SCM#8NF3/8	#8-32X3/8" PHILLIPS PAN HEAD MACHINE SCREW	16
③	PRHD-KN#8NF	#8-32 KEPS NUT	16

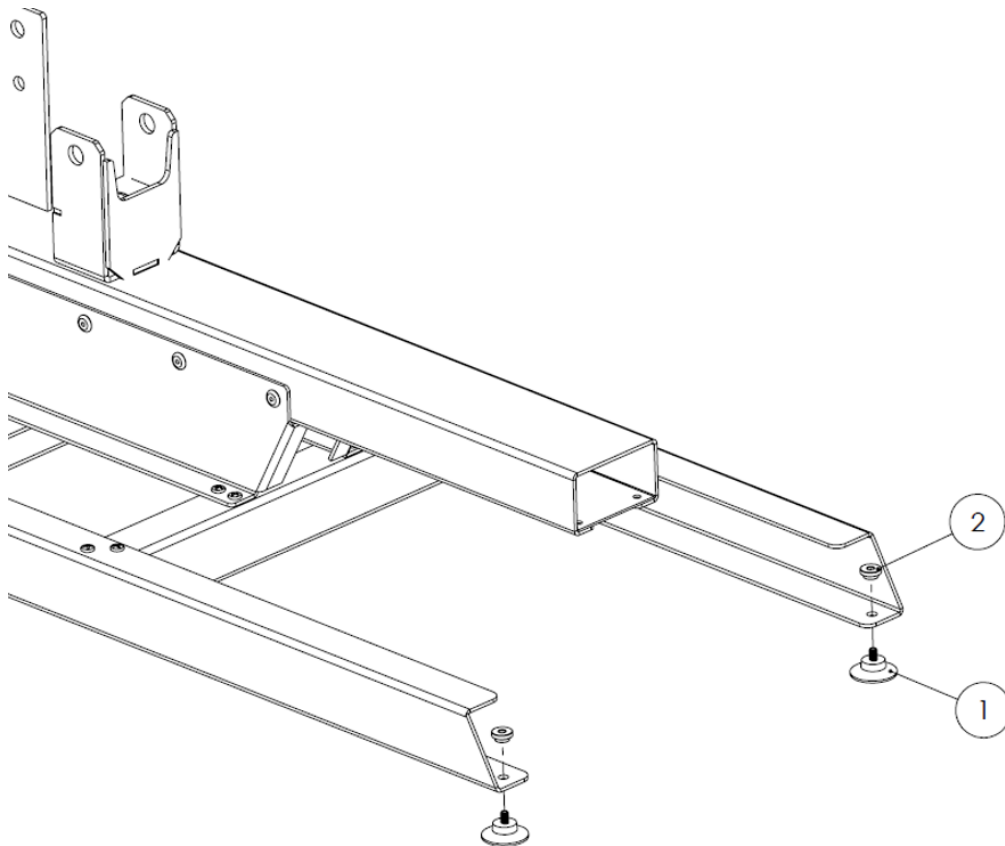


STEP 5

Use Hardware Kit PPKIT 1

Attach the suction cup mounting pads ① with the supplied hand lock nuts ②. To use the suction cups for printing will require a smooth tabletop surface. For permanent robust mounting, replace the suction cups with mounting screws (not supplied).

TAG	ITEM	DESCRIPTION	QTY.
①	PRCO-SUCCUP1	SUCTION CUP MOUNTING PAD	4
②	PRCO-SUCCUP1	SUCTION CUP HAND NUT	4



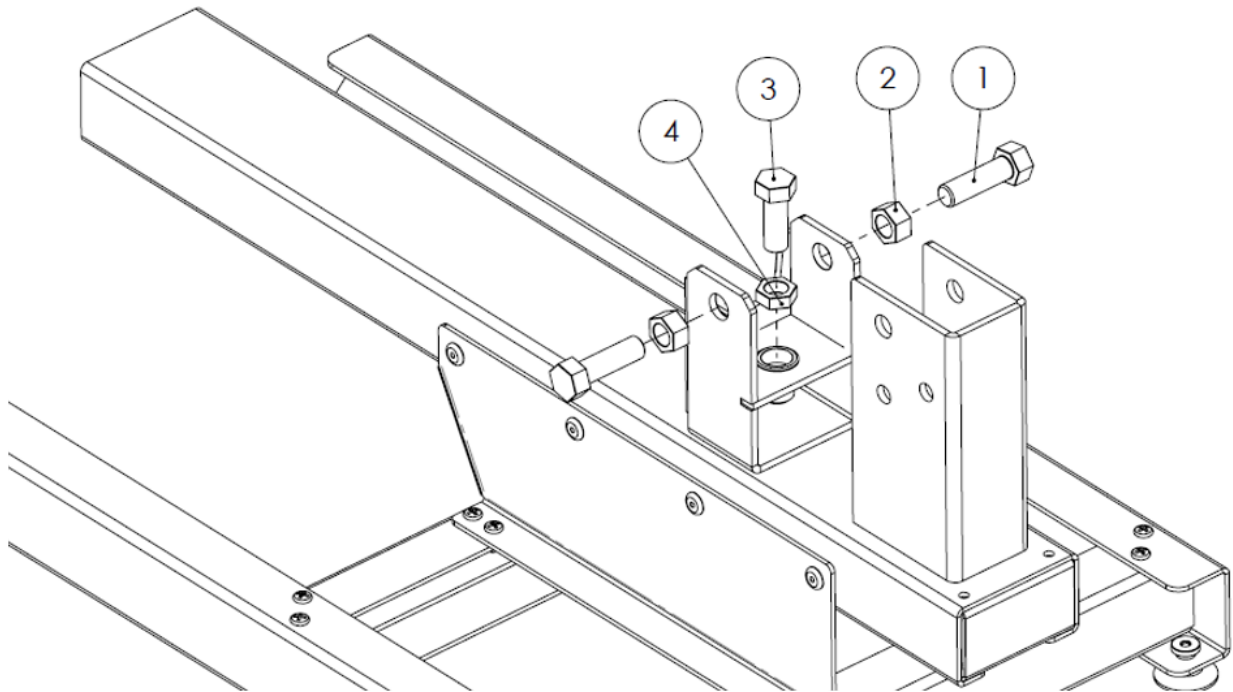
STEP 6

Use Hardware Kit PPKIT2

Two 9/16" wrenches are required.

Install the nylon hex cap screws ① and hex nuts ②. Install the vertical hex cap screw ③ and jam nut ④. Do not over tighten either of these screws. They will be used to adjust the off-contact of the printing head.

TAG	ITEM	DESCRIPTION	QTY.
①	PRHD-HC3/8NC1-1/2NYBLK	3/8-16 X 1-1/2" NYLON HEX CAP SCREW	2
②	PRHD-HN3/8NCGR5ZC	3/8-16 HEX NUT	2
③	PRHD-HC3/8NC1GR5ZC	3/8-16 X 1 HEX CAP SCREW	1
④	PRHD-JN3/8NCGR5ZC	3/8-16 JAM NUT	1



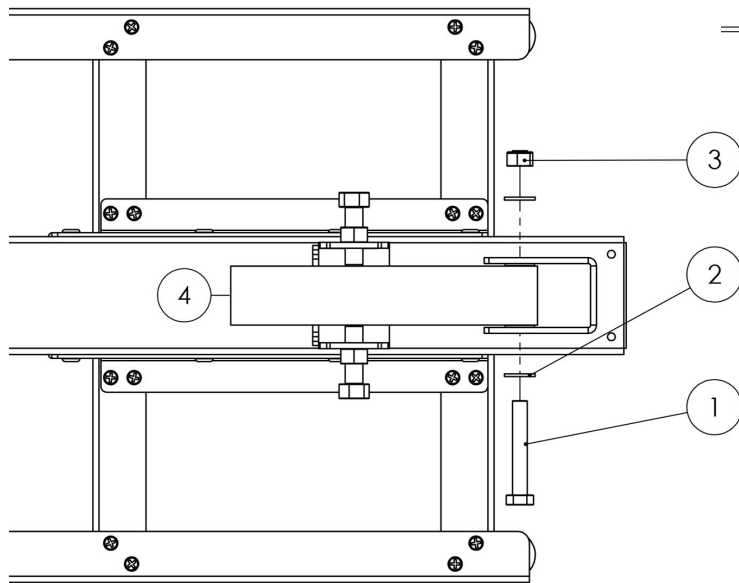
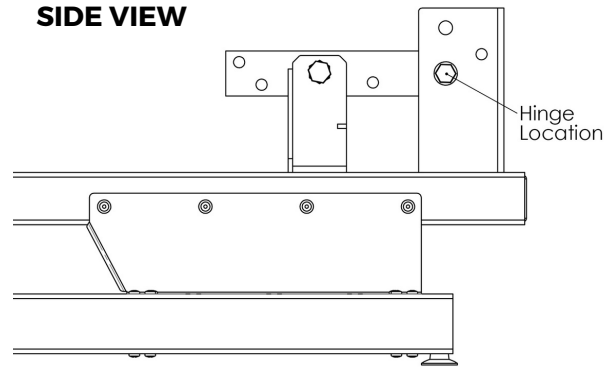
STEP 7

Use Hardware Kit PPKIT3

Two 9/16" wrenches are required.

Attach the main print arm assembly ④ using the hinge hardware ①②③ in the lowest of the three hinge hole locations (see Side View).

SIDE VIEW



Tighten the hardware to the point where there is some resistance but the main print arm assembly can still move up and down. Tighten the nylon hex cap screws from the previous step to snugly lock the main print arm assembly in place.

TAG	ITEM	DESCRIPTION	QTY.
①	PRHD-HC5/16NF2GR8ZY	5/16-24 X 2 HEX CAP SCREW	1
②	PRHD-WA1/4USSGR5ZC	1/4 USS FLAT WASHER	2
③	PRHD-LNYN5/16NFG5ZC	5/16-24 LOWPRO NYLOC NUT	1
④	MFMS-PPCLRARM	MAIN PRINT ARM ASSEMBLY	1



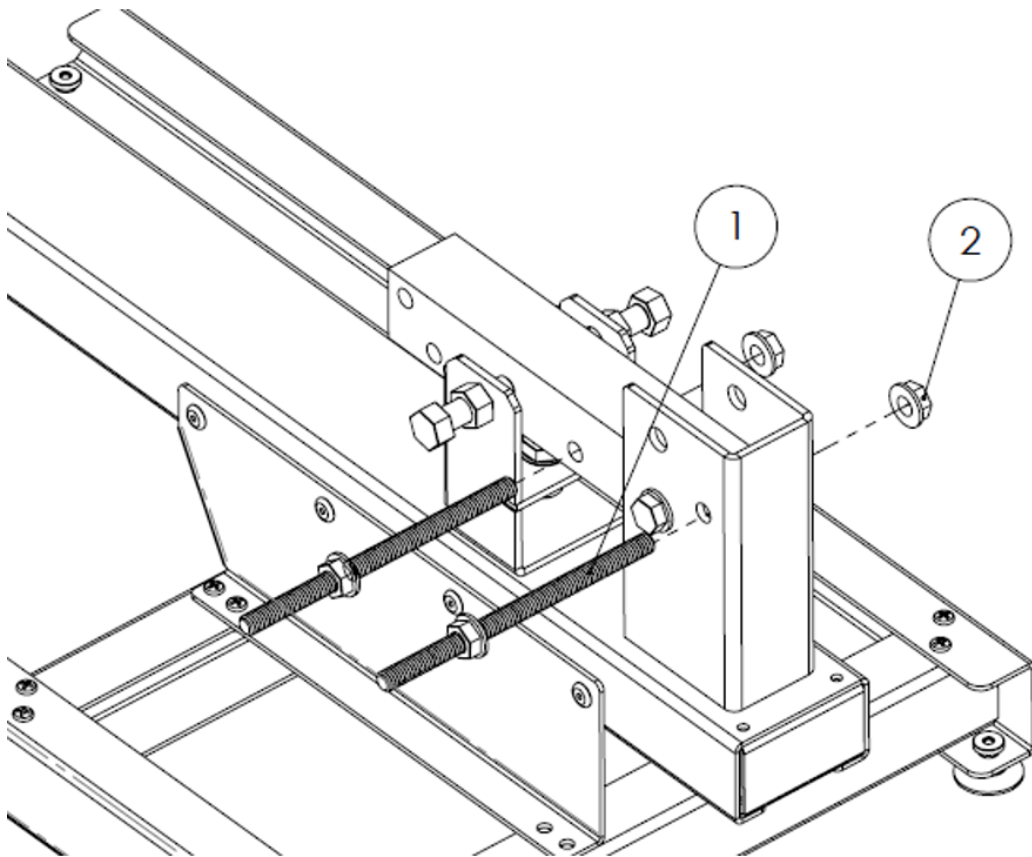
STEP 8

Use Hardware Kit PPKIT4

Two ½" wrenches are required.

Install the threaded studs ① into the press base center hinge pocket hole and the lower main print arm assembly. Ensure the studs are protruding equally on each side of the main print arm assembly and the hinge pocket. Once in place, lock the studs with the supplied 5/16 flanged whiz nuts ②.

TAG	ITEM	DESCRIPTION	QTY.
①	PRHD-STD5/16NCX4-1/2	THREADED STUD 5/16-18 X 4-1/2" LONG	2
②	PRHD-FLN5/16NCGR5ZC	5/16-18 FLANGED WHIZ NUT	4

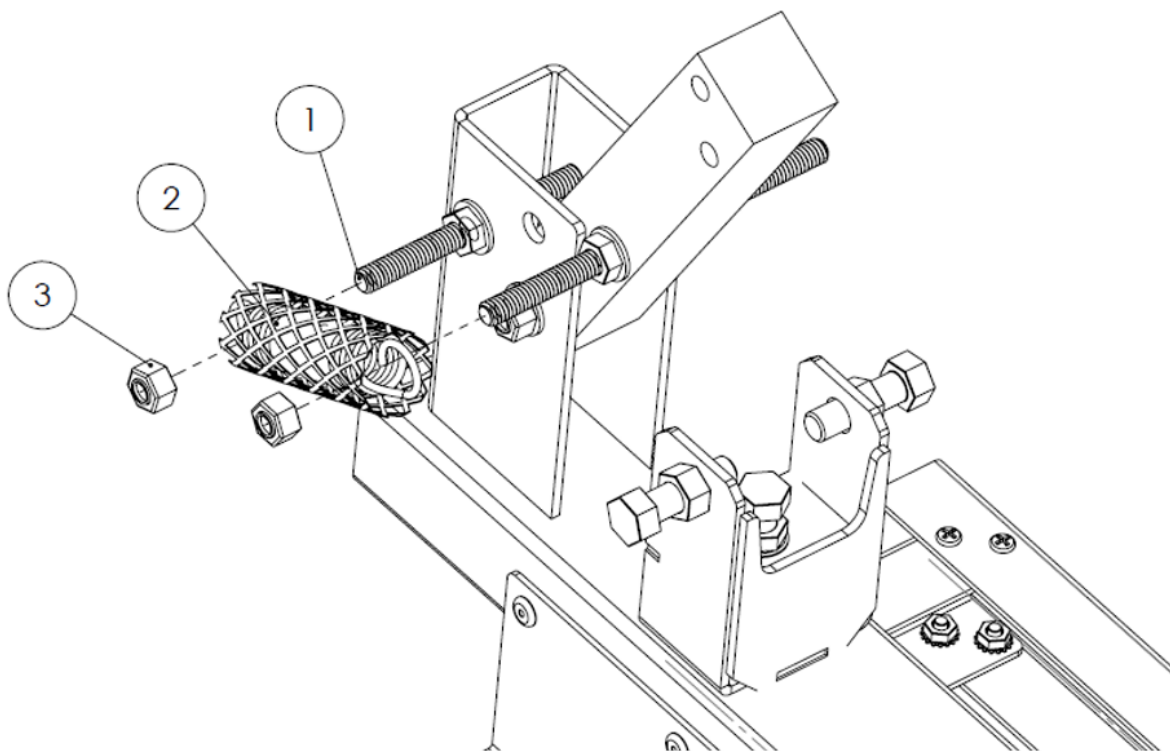


STEP 9

Use Hardware Kit PPKIT4

Install the extension springs ② onto the threaded studs ① with the main print arm assembly in the up position. Ensure they are evenly spaced on each side of the main print arm assembly. Before dropping in the down position, adjust springs so that they are parallel with the main print arm assembly. Attach nyloc nuts ③ to hold the springs in place.

TAG	ITEM	DESCRIPTION	QTY.
①	PRHD-STD5/16NCX4-1/2	THREADED STUD 5/16-18 X 4-1/2" LONG	2
②	PRCO-SPGPP1	EXTENSION SPRING 7/8" X 2-7/8" LONG	2
③	PRHD-NYN5/16NCGR5ZC	5/16-18 NYLOC NUT	4

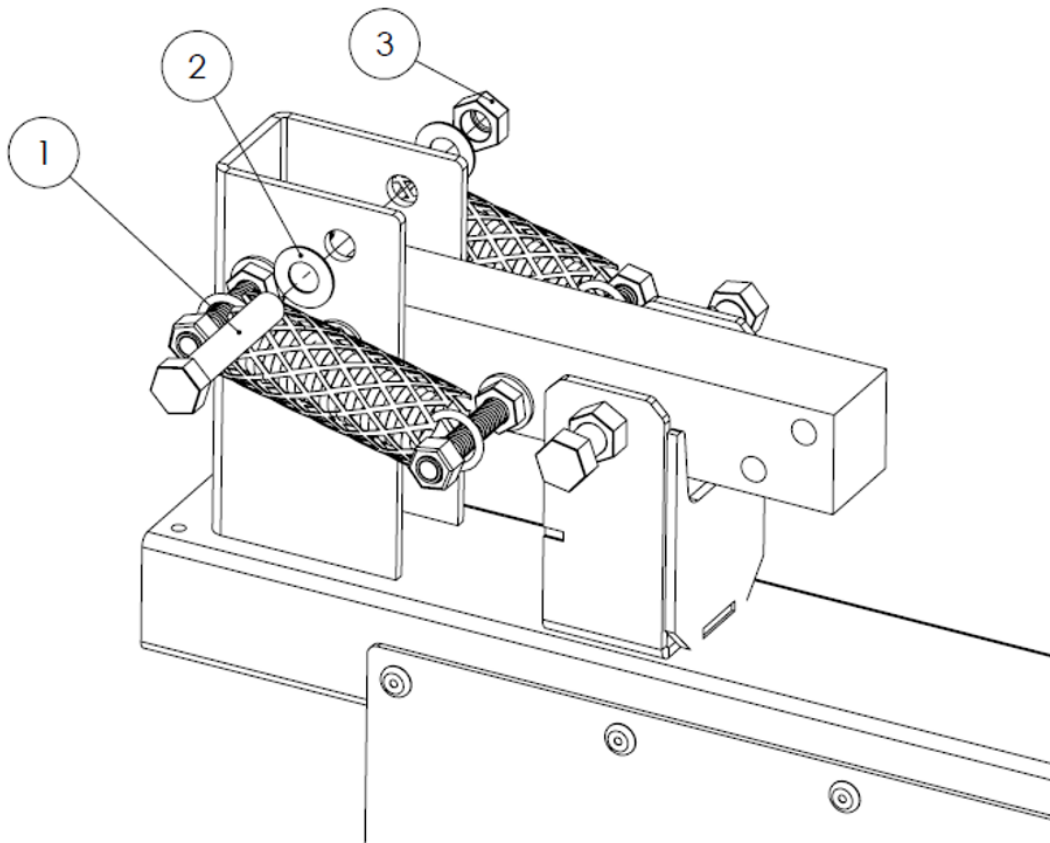


STEP 10

Use Hardware Kit PPKIT4

With the main print arm assembly in the down position, install the stop hex cap screw ① with the supplied hardware ②③. Do not overtighten. Only tighten enough to hold the bolt in place but still rotate by hand. Overtightening this bolt will cause resistance in the main print arm assembly.

TAG	ITEM	DESCRIPTION	QTY.
①	PRHD-HC3/8NC2GR5ZC	3/8-16 X 2 HEX CAP SCREW	1
②	PRHD-WA3/8SAE-SS	3/8 SAE FLAT WASHER	2
③	PRHD-LNYN3/8NFGR5ZC	3/8-24 LOWPRO NYLOC NUT	1



STEP 11

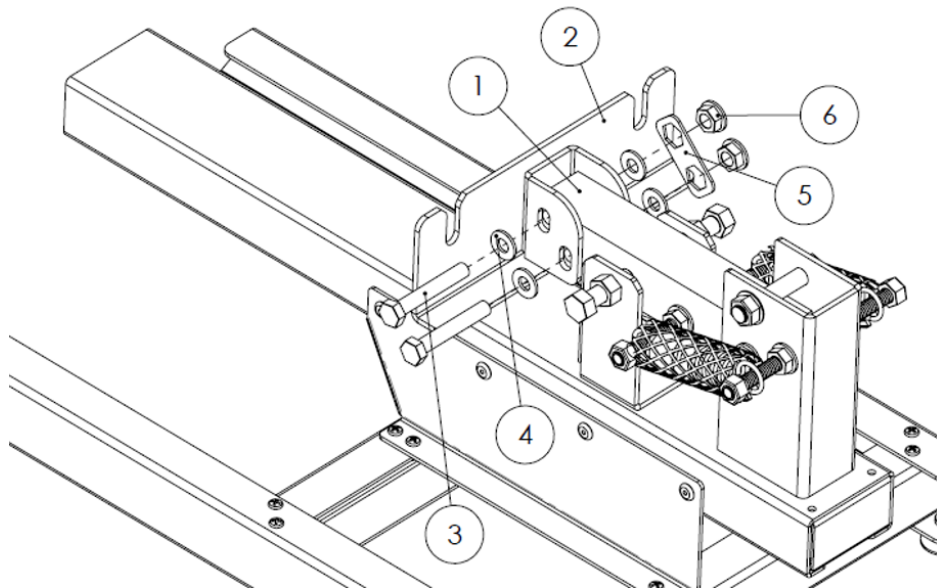
Use Hardware Kit PPKIT5

One ½" wrench is required.

Install the clamp attachment bracket ② with hardware ③④⑤⑥. Ensure the flanged whiz nuts ⑥ are installed as pictured to keep the retaining clip in place.

This is a main adjustment point on your press to set up the off contact and tilt adjustment from the platen.

TAG	ITEM	DESCRIPTION	QTY.
①	MFMS-PPCLRARM	PRESS COLOR ARM	1
②	MFZC-PPBKT	CLAMP ATTACHMENT BRACKET	1
③	PRHD-HC5/16NC2GR2ZC	5/16-18 X 2 HEX CAP SCREW	2
④	PRHD-WA1/4USSGR5ZC	1/4 USS FLAT WASHER	4
⑤	MFLS-PPCLIP	TILT BRACKET NUT RETAINING CLIP	1
⑥	PRHD-FLN5/16NCGR5ZC	5/16-18 FLANGED WHIZ NUT	2

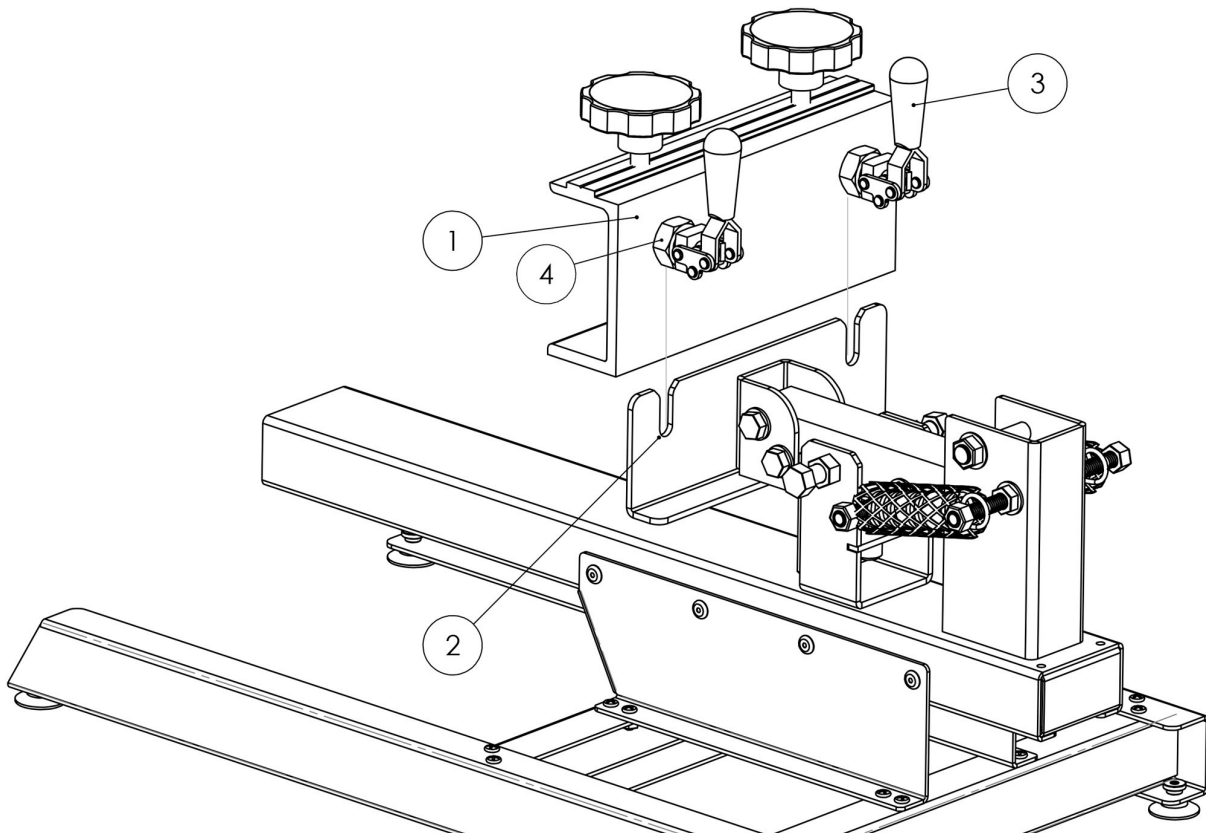


STEP 12

Install the screen clamping head ① into the clamp attachment bracket slots ② with the attached quick release toggle clamps ③. The 15/16" locking nuts on the toggle clamps will allow you to adjust the clamping pressure. Tighten or loosen the nut to adjust the locking force of the clamp.

Note: These parts are the main components in the box.

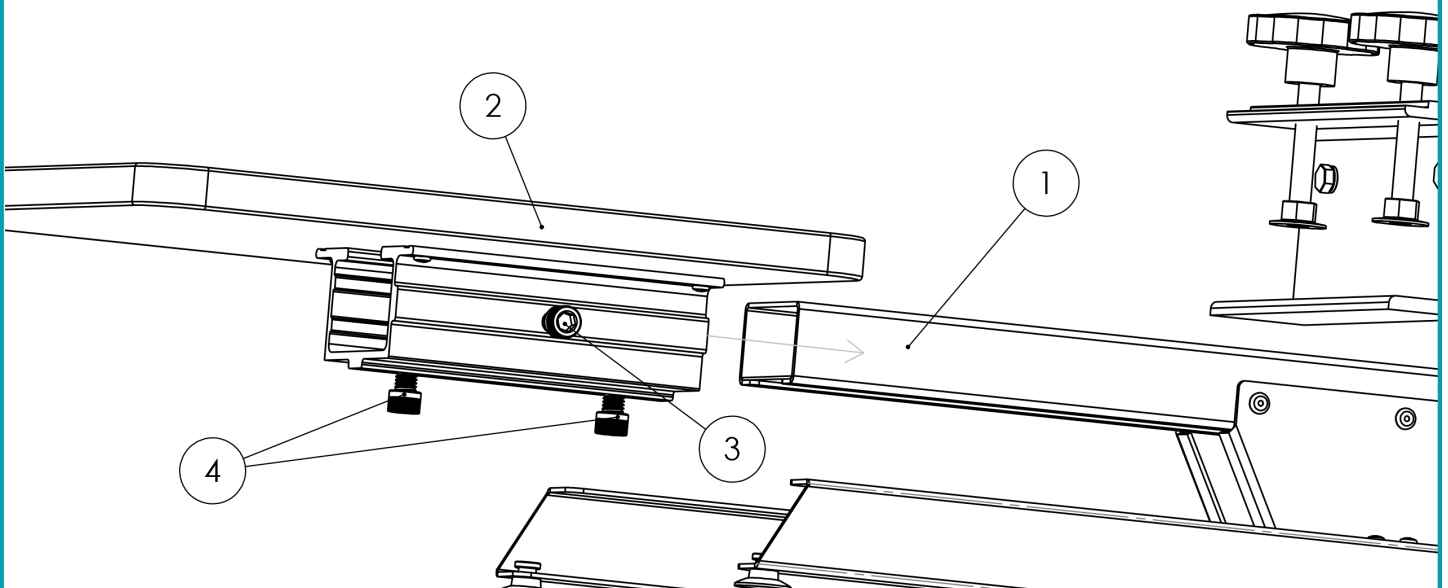
TAG	ITEM	DESCRIPTION	QTY.
①	MFMS-PPCPHED	SCREEN CLAMPING HEAD	1
②	MFZC-PPBKT	CLAMP ATTACHMENT BRACKET	1
③	PRCO-CH36202	QUICK-RELEASE TOGGLE CLAMP	2
④	PRHD-LNYN5/8NF	15/16" LOCKING NUTS (PRE-ASSEMBLED)	2



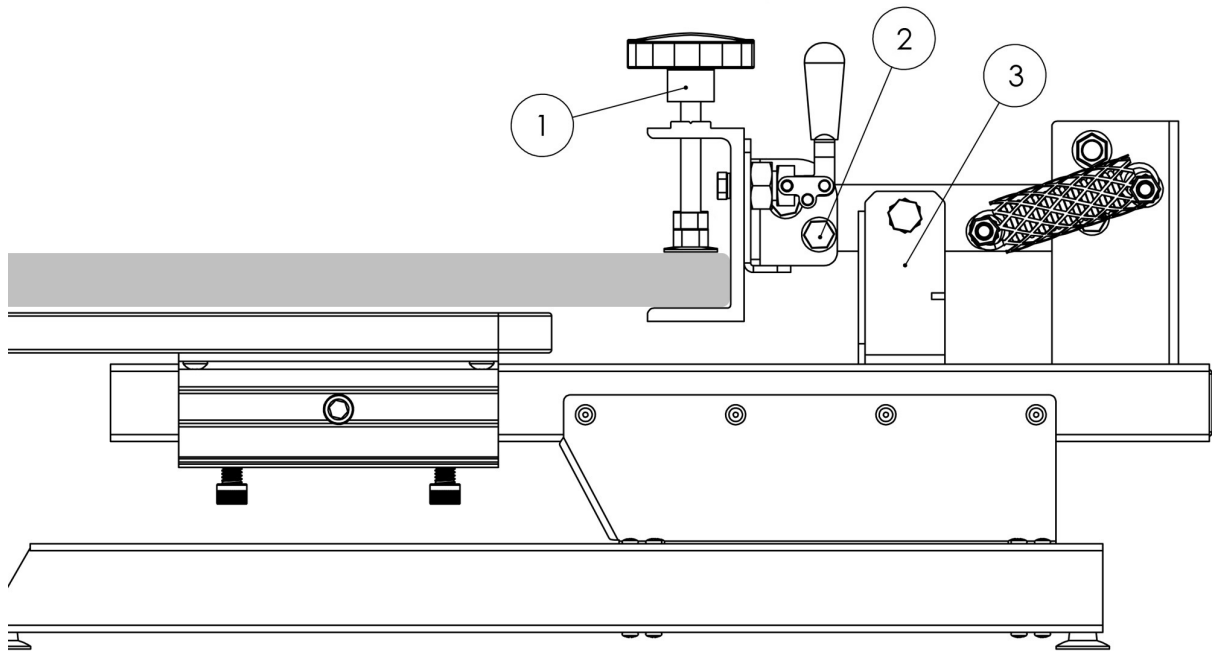
STEP 13

Slide the platen ② (Assembled in Step 1) on the main press base ①. Adjust placement of the platen so the screen clamping head does not rest on the platen when lowered. Tighten the long socket cap screws to secure platen in place.

TAG	ITEM	DESCRIPTION	QTY.
①	MFPD-PPBDY	MAIN PRESS BASE	1
②	PLWD-14X14PP	14" X 14" PLATEN	1
③	PRHD-SCP3/8NCX3/4	3/8-16 X 3/4" LONG SOCKET CAP SCREW	3



SCREEN SETUP



TAG	ITEM	DESCRIPTION	QTY.
①	PRCO-KNBFLT3/8NC3ML	CLAMPING KNOBS	2
②	PRHD-HC5/16NC2GR2ZC	5/16-18 X 2 HEX CAP SCREW	2
③	PRHD-HC3/8NC1GR5ZC	3/8-16 X 1 HEX CAP SCREW	1

Place your screen (not included) in the clamping head. Adjust the screen until it is aligned in the desired location and lock the screen in place by tightening the clamping knobs ①.

View your press from the side to ensure the screen is evenly hovering over the platen. If the screen is not even, you can adjust the height and tilt by loosening the hex cap screw ② with a 1/2" wrench. You can also adjust the tilt of the press arm by tightening or loosening the hex cap screw ③.

QUICK-RELEASE TOGGLE CLAMP

The interchangeable clamping feature of this press allows you to keep your screens aligned when printing multi-color designs.

You will need a screen clamping head (additional heads sold separately) and screen for each color of your design.

Register your first screen with your design and tighten into place using the clamping knobs. Remove this screen (with clamping head attached) by releasing the toggle clamps.

Insert new screen clamping head into the clamp attachment bracket and lock the toggle clamps into place. Place the screen into the clamping head and register with your design. Once aligned correctly, tighten the screen into place using the clamping knobs.

Repeat this process for any additional screens.

Once your screens are registered and tightened in place, only use the toggle clamps to remove your screen (keeping the clamping head attached). This will ensure your registration stays locked into place.

Interchange the screens (with clamping head attached) into the clamp attachment bracket to screen print each color of your design.

**Scan QR Code for Video
of this Process**



SECURING YOUR PRESS

Use the suction cups on the base of your press to attach to a smooth, flat surface, such as a countertop or table. Press the suction cup firmly in place, making sure there are no air bubbles between the cup and the mounting surface.

Once secured to your surface, the press should not move as you print.

To release the suction cups and move the press, lift the edge of each suction cup.

Alternatively, you can permanently mount your press by removing the suction cups and attach the press directly to your table using screws.

PALLET ADHESIVE

For optimal performance with your screen printing press, it's important to ensure that your pallet is sticky.

There are several products on the market for this purpose. I like to use a liquid pallet adhesive. You can spread this directly on top of your pallet or apply a layer of pallet tape first. The pallet tape will make replacing the tack much easier.

This stickiness that the tack creates helps secure the top layer of your shirt in place during the printing process. When you lift the screen, the shirt remains firmly positioned. The screen will then lower back down in the same spot allowing you to add additional ink, if needed.

LIMITED WARRANTY

While we take pride in our quality and do our best to ensure your satisfaction, Pigskins & Pigtails/Ryonet® does not assume any liability for damages, whether consequential or incidental, that may result from the misuse of below stated specifications.

GENERAL PROVISIONS: The warranties described below apply ONLY to the original purchasers of a new Screen Printer Starter Press. Under these warranties, Ryonet® will repair or replace, as Ryonet® elects, covered defective parts, materials, or workmanship without charge for parts or the reasonable cost of labor related thereto. Ryonet® will use only new or remanufactured parts or components furnished by Ryonet® or a Ryonet®-authorized third party.

WARRANTY DURATION: A lifetime warranty shall apply to Press, parts, components, and materials as set forth below.

WHAT IS COVERED: This warranty covers all non-wearable parts, non-wearable components, and non-wearable materials of a new Screen Printer Starter Press. However, the following items are excluded from the scope of this warranty: expendable parts (including but not limited to bearings, springs, nylon bolts, oilites, and fasteners). FURTHER, Ryonet® does not warrant failure of parts or components resulting from misuse or lack of proper maintenance, or improper installation.

WHAT IS NOT COVERED: Installation, inspection, and routine maintenance costs are the sole responsibility of the purchaser; used equipment; any equipment modified or altered in any way not approved by Ryonet® in writing including, but not limited to, disassembling bearing components; routine maintenance and lubrication; consequences of negligence, misuse, accident, or improper application, installation, or storage of the press; consequences of any service performed by someone other than a Ryonet® authorized provider.

SECURING WARRANTY SERVICE: Warranty service must be requested of the nearest Ryonet® location. At the time of requesting warranty service, the person or entity requesting warranty service must be prepared to present evidence that it was the original purchaser of the new Screen Printer Starter Press. Written authorization must be obtained from Ryonet® before any part will be accepted. In order to return such defective parts, contact Ryonet® to return such part freight prepaid. Replacement parts are sent out freight collect. Parts sent out prior to receiving defective parts will be sent C.O.D., cost plus freight. Upon return of defective part, if it is deemed that the part was not damaged by customer but failed, the cost of the replacement part will be refunded.

NO REPRESENTATIONS OR IMPLIED WARRANTIES: WHERE PERMITTED BY LAW, RYONET® NOR ANY RYONET® AFFILIATE MAKES ANY GUARANTIES, WARRANTIES, CONDITIONS, REPRESENTATIONS, EXPRESS OR IMPLIED PROMISES, ORAL OR WRITTEN, AS TO THE NON OCCURRENCE OF ANY DEFECT, THE QUALITY, OR PERFORMANCE OF SCREEN PRINTER STARTER PRESS OTHER THAN THOSE SET FORTH HEREIN. FURTHER, RYONET® NOR ITS AFFILIATES DO NOT MAKE ANY IMPLIED WARRANTIES OR CONDITIONS OF MERCHANTABILITY OR FITNESS OTHERWISE PROVIDED BY THE UNIFORM COMMERCIAL CODE OR REQUIRED BY LAW TO THE FULLEST EXTENT PROVIDED BY LAW EXCEPT AS SET FORTH HEREIN.

LIMITATION OF LIABILITY: The remedies set forth in this warranty are the purchaser's exclusive remedies in connection with the performance of, or any breach of any guarantee, condition, or warranty with respect to any new Screen Printer Starter Presses. In the event the above warranty fails to correct the purchaser's performance problems caused by defects in workmanship and/or materials, the purchaser's exclusive remedy shall be limited to payment for actual damages in an amount not to exceed the cost of the press.

IN NO EVENT SHALL RYONET® OR ANY AFFILIATE OF RYONET® BE LIABLE FOR INCIDENTAL OR CONSEQUENTIAL DAMAGES FOR INJURIES TO THE FULLEST EXTENT PROVIDED BY LAW, INCLUDING BUT NOT LIMITED TO, LOSS OF PROFITS, LOSS OF MERCHANDISE, SUBSTITUTION, OR OTHER COMMERCIAL LOSS, FOR DAMAGE SUFFERED BY PURCHASER ARISING FROM SCREEN PRINTER STARTER PRESSES , UNLESS SUCH DAMAGES OR INJURIES ARE CAUSED BY THE GROSS NEGLIGENCE OR INTENTIONAL ACTS OF RYONET®. RYONET® FURTHER DISCLAIMS ALL LIABILITY FOR BODILY INJURIES TO THE FULLEST EXTENT PROVIDED BY LAW.

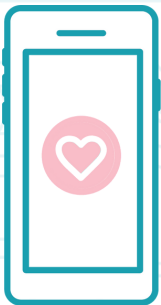
NO SELLER'S WARRANTY: No person or entity, other than Ryonet®, who sells the Screen Printer Starter Press has the authority to make any guarantee, representation, promise, or warranty with respect to any new Screen Printer Starter presses unless the person or entity delivers to the purchaser a separate written guaranty certificate specifically guaranteeing the press, in which case Ryonet® shall have no obligation to the purchaser. Neither Screen Printer Starter Press distributors nor any other person or entity, has any authority to make any representation or promise on behalf of Ryonet® or to modify the terms or limitations of this warranty in any way.

ADDITIONAL INFORMATION

For additional information concerning the Screen Printer Starter Press / Ryonet® limited warranty, contact support@ryonet.com or 1-800-314-6390



SNAP. SHARE. TAG.



Snap a photo of your press
or your first project and tag
[@pigskinsandpigtails](https://www.instagram.com/pigskinsandpigtails)