



## Assembly Instructions

# REVOLVINK

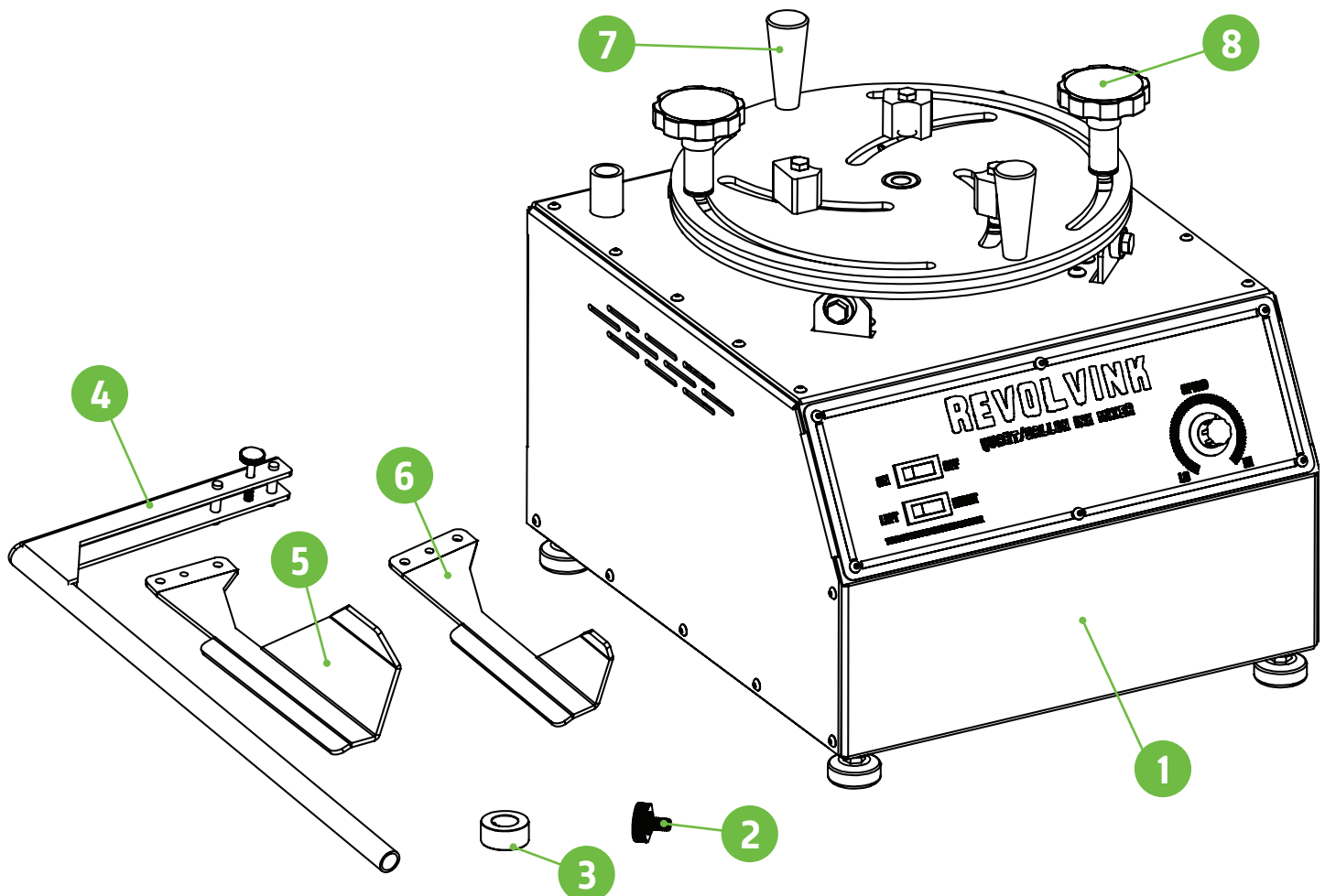
## REVOLVINK QUART & GALLON INK MIXER



## What's in the box

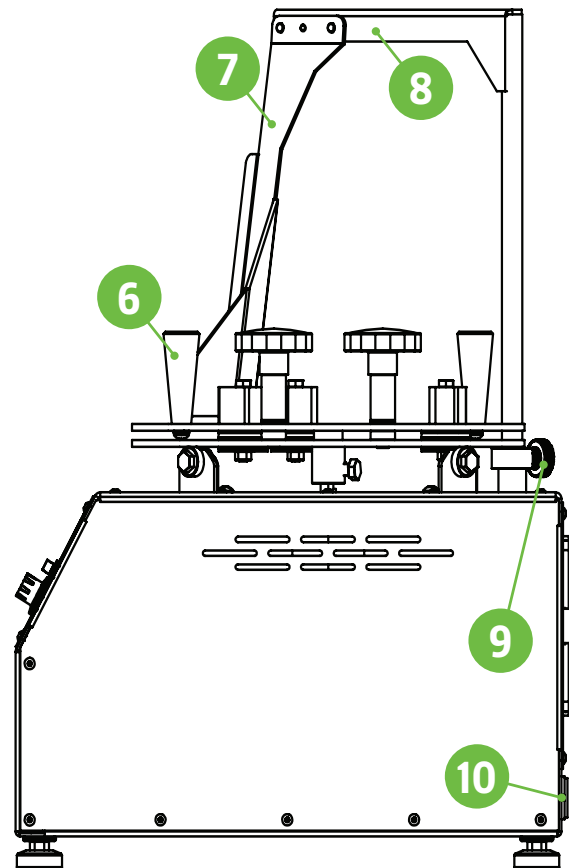
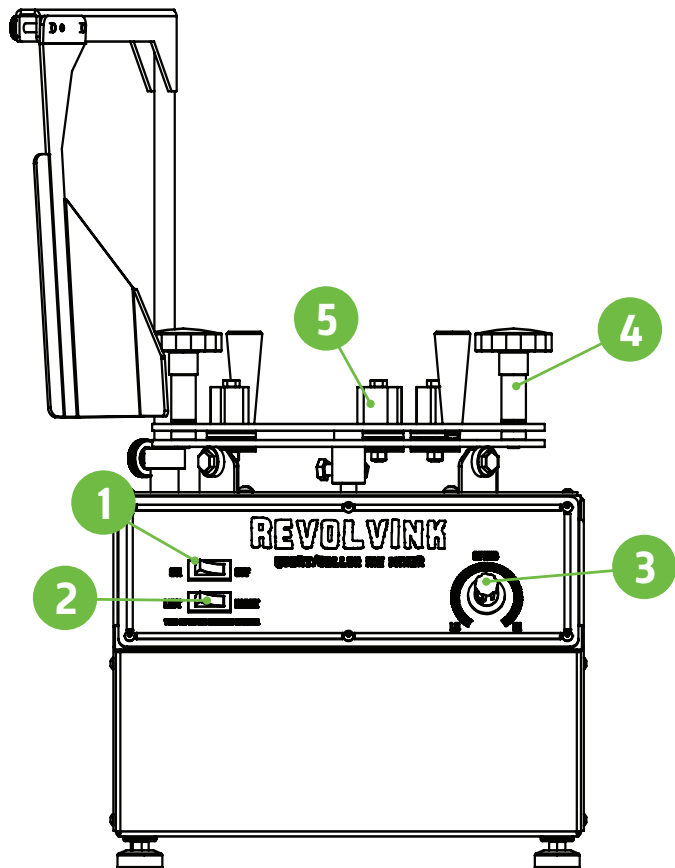
| TAG | ITEM                             | QTY. |
|-----|----------------------------------|------|
| 1   | MAIN INK MIXER ASSEMBLY          | 1    |
| 2   | PADDLE SHAFT LOCKING COLLAR KNOB | 1    |
| 3   | PADDLE SHAFT LOCKING COLLAR      | 1    |
| 4   | INK PADDLE HOLDING BAR           | 1    |
| 5   | GALLON INK MIXING PADDLE         | 1    |
| 6   | QUART INK MIXING PADDLE          | 1    |
| 7   | HOLDING JAW TIGHTENING KNOB      | 2    |
| 8   | HOLDING JAW LOCKING KNOBS        | 2    |

**IMPORTANT: BE SURE ALL PARTS ARE ENCLOSED BEFORE ASSEMBLING.**



# INK MIXER OVERVIEW

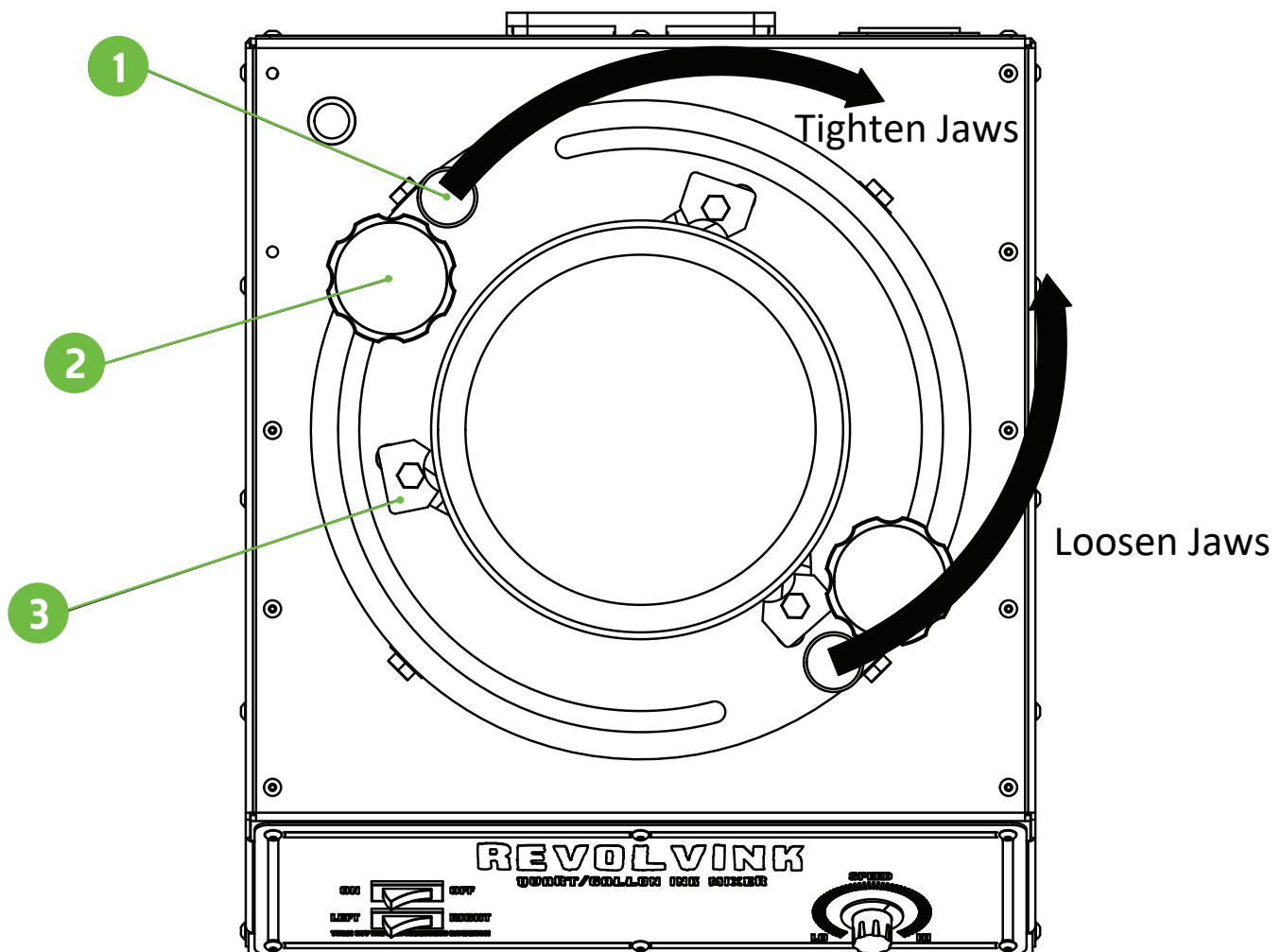
| TAG | ITEM                                     | QTY. |
|-----|--|------|
| 1   | ON/OFF SWITCH                            | 1    |
| 2   | ROTATIONAL DIRECTION SWITCH              | 1    |
| 3   | ROTATION SPEED CONTROL KNOB              | 1    |
| 4   | CHUCK PLATE LOCKING KNOB                 | 2    |
| 5   | CONTAINER LOCKING JAW                    | 3    |
| 6   | CHUCK PLATE ADJUSTMENT KNOB              | 2    |
| 7   | INK MIXING PADDLE (GALLON VERSION SHOWN) | 1    |
| 8   | INK PADDLE HOLDING BAR                   | 1    |
| 9   | LOCKING COLLAR FOR HOLDING BAR           | 1    |
| 10  | MAIN POWER/FUSE                          | 1    |



# Step 1

Install the container into the locking jaw assembly. First loosen the locking knobs **(2)**. Next, rotate the top plate in a clockwise direction with the adjustment levers **(1)**. Ensure that the locking jaws **(3)** are in full contact with the container. It may require some minor hand adjustments to ensure the jaws are making strong contact with the container. Once the container does not rotate with the hand, tighten both locking knobs **(2)**.

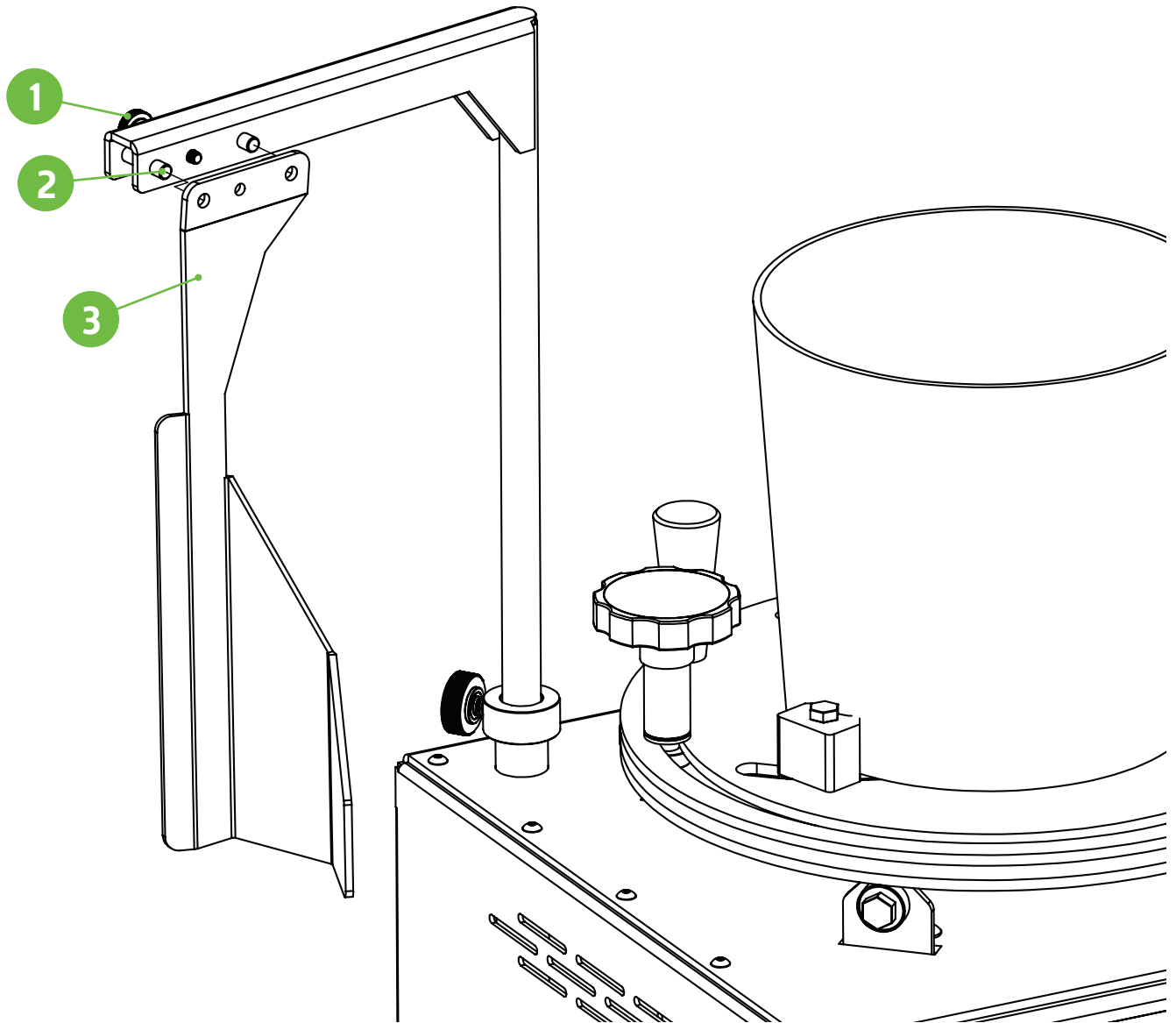
**NOTE:** Once a container size has been established, you will be able to lift out the container and press in the next container of the same size without adjusting the locking knobs.



## Step 2

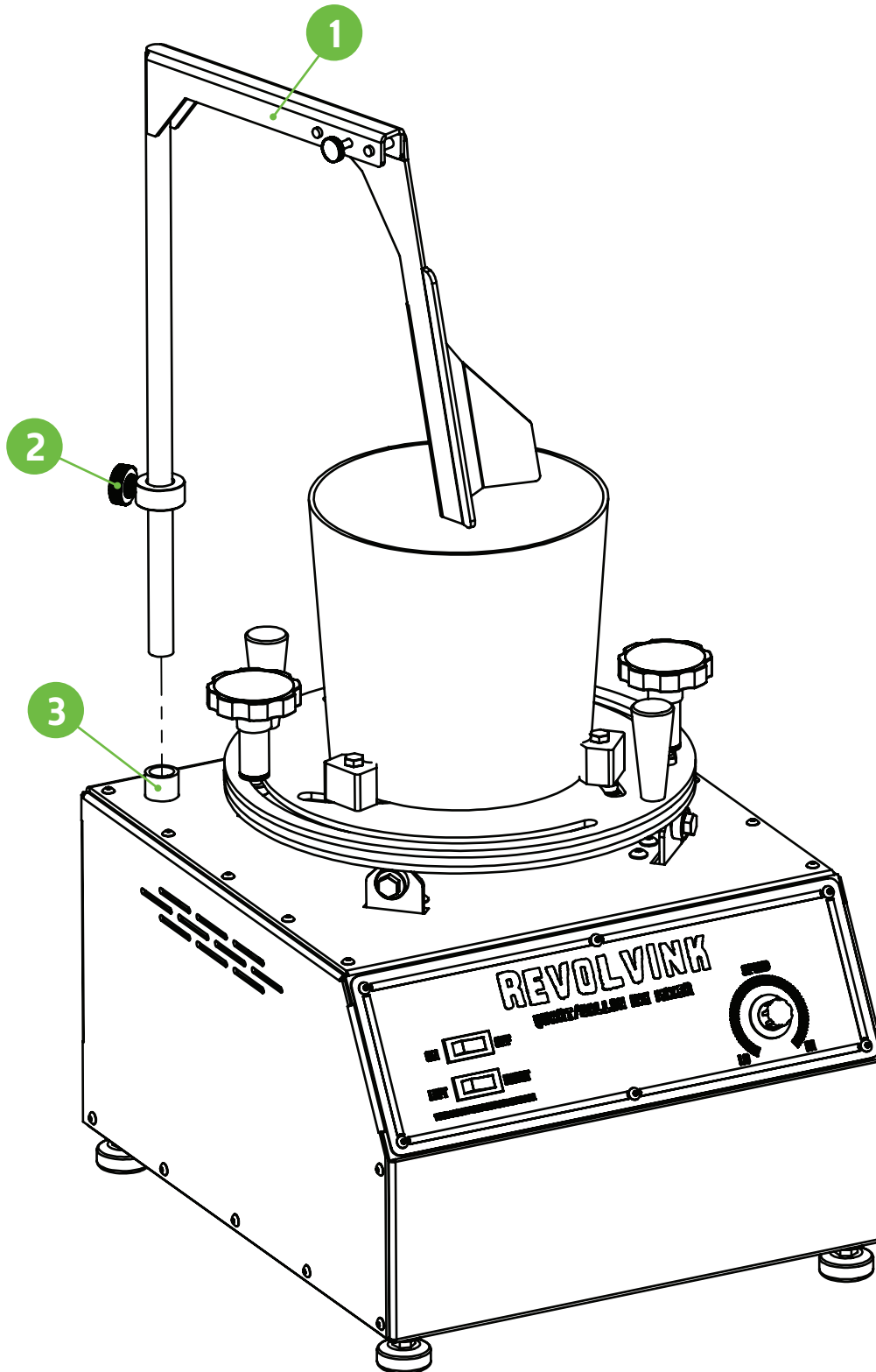
Install the in-paddle **(1)** onto the locating pins within the ink paddle holding bar **(2)**. Use the thumb screw **(3)** to lock the Mixing paddle to the Holding bar.

**NOTE:** Ensure that the mixing bar is fully tightened to the holding bar. Loose paddles may result in warping during the mixing/stirring process.



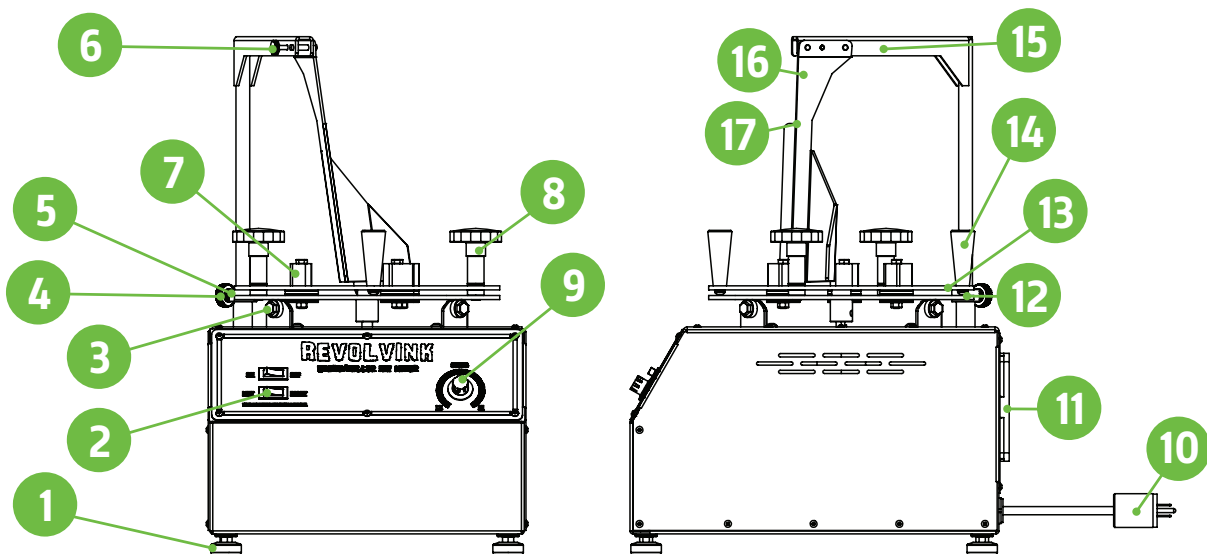
## Step 3

Install the paddle assembly **(1)** into the mixing container and the bar holding tube **(3)**. Use the Locking collar **(2)** to set the desired height of the mixing paddle assembly.



# PARTS LIST

| TAG | NAME/ID                | DESCRIPTION                              | QTY |
|-----|------------------------|--|-----|
| 1   | PRHD-LF3/8NC1-1/2GR5ZC | 3/8 X 1-1/2 STEM POLY LEVELING BLOCK     | 1   |
| 2   | MFCO-TRG22F2FBBNN      | SWT, SPST, ON-OFF, 250V, 16A, BLK        | 2   |
| 3   | PRCO-DETWHLBRNG        | METAL WHEEL BEARING                      | 4   |
| 4   | PRCO-KNBKNL5/16NC1/2   | 5/16 X 1/2" LONG THUMB SCREW             | 1   |
| 5   | PRHD-CALR11/16         | 11/16" SHAFT COLLAR                      | 1   |
| 6   | MFCO-INKKNOB1          | 10-32 X 1-1/2" LONG THUMB SCREW          | 1   |
| 7   | MFMS-INKMIXJAW         | INK MIXER ALUMINUM CONTAINER HOLDING JAW | 3   |
| 8   | PRCO-KNBFLT3/8NC2ML    | 3/8-16 X 2" LONG FLUTED KNOB             | 2   |
| 9   | MFCO-KNBPOT1           | REVOLVINK PLASTIC INDICATING KNOB        | 1   |
| 10  | MFCO-IECC13515P        | 6FT 5-15P TO C13 POWER CORD              | 1   |
| 11  | MFCO-FANKITFAN         | AC AXIAL FAN 5"                          | 1   |
| 12  | MFZC-INKMIXLWRPLT      | INK MIXER LOWER CHUCK PLATE ASSEMBLY     | 1   |
| 13  | MFZC-INKMIXUPRPLT      | INK MIXER UPPER CHUCK PLATE              | 1   |
| 14  | MFCO-HANDLEVER         | PLASTIC TAPERED HANDLE                   | 2   |
| 15  | MFWD-INKHLD BAR        | INK MIXER PADDLE HOLDING BAR             | 1   |
| 16  | MFPB-INKMIXPADLGAL     | INK MIXING PADDLE FOR GALLONS (SHOWN)    | 1   |
| 17  | MFPB-INKMIXPADLQT      | INK MIXING PADDLE FOR QUARTS (NOT SHOWN) | 1   |



## LIMITED WARRANTY

While we take pride in our quality and do our best to ensure your satisfaction, Ryonet® does not assume any liability for damages, whether consequential or incidental, that may result from the misuse of the below-stated specifications.

**MANUFACTURER WARRANTY:** Motor MFR Warranty = 12 months (Parts / Labor)

**RYONET'S WARRANTY:** A 3 year (limited) warranty shall apply to covered RevolvInk™ mixer, parts, components, and materials as set forth below.

**WHAT IS COVERED:** This limited warranty covers all non-wearable parts, non-wearable components, and non-wearable materials of new RevolvInk™ mixers. HOWEVER, the following items are excluded from the scope of this warranty: Motor, which carries a 12-month parts and labor direct from its Manufacturer. FURTHER, Ryonet® does not warrant failure of parts or components resulting from misuse or lack of proper maintenance, or improper installation.

**WHAT IS NOT COVERED:** Installation, inspection, and routine maintenance and any such costs associated are the sole responsibility of the purchaser; used equipment; any equipment modified or altered in any way not approved by Ryonet® in writing including, but not limited to, disassembling bearing components; routine maintenance and lubrication; consequences of negligence, misuse, accident, or improper application, installation, or storage of the press; consequences of any service performed by someone other than a Ryonet®-authorized provider.

**SECURING WARRANTY SERVICE:** Warranty service must be requested from the nearest Ryonet® location. At the time of requesting warranty service, the person or entity requesting warranty service must be prepared to present evidence that it was the original purchaser of the RevolvInk Mixer. Written authorization must be obtained from Ryonet® before any part will be accepted. In order to return such defective parts, contact Ryonet® to return such part freight prepaid. Replacement parts are sent out for freight collection. Parts sent out prior to receiving the defective parts will be sent C.O.D., cost plus freight. Upon return of the defective parts, if it is deemed that the parts were not damaged by the customer but failed, the cost of the replacement part will be refunded.

NO REPRESENTATIONS OR IMPLIED WARRANTIES: WHERE PERMITTED BY LAW, RYONET® NOR ANY RYONET® AFFILIATE MAKES ANY GUARANTEES, WARRANTIES, CONDITIONS, REPRESENTATIONS, EXPRESS OR IMPLIED PROMISES, ORAL OR WRITTEN, AS TO THE NONOCCURRENCE OF ANY DEFECT, THE QUALITY, OR PERFORMANCE OF THE REVOLVINK MIXER OTHER THAN THOSE SET FORTH HEREIN. FURTHER, RYONET® NOR ITS AFFILIATES DO NOT MAKE ANY IMPLIED WARRANTIES OR CONDITIONS OF MERCHANTABILITY OR FITNESS OTHERWISE PROVIDED BY THE UNIFORM COMMERCIAL CODE OR REQUIRED BY LAW TO THE



FULLEST EXTENT PROVIDED BY LAW EXCEPT AS SET FORTH HEREIN.

**LIMITATION OF LIABILITY:** The remedies set forth in this warranty are the purchaser's exclusive remedies in connection with the performance of, or any breach of any guarantee, condition, or warranty with respect to the RevolvInk Mixer. In the event, the above warranty fails to correct the purchaser's performance problems caused by defects in workmanship and/or materials, the purchaser's exclusive remedy shall be limited to payment for actual damages in an amount not to exceed the cost of the ink mixer.

IN NO EVENT SHALL RYONET® OR ANY AFFILIATE OF RYONET® BE LIABLE FOR INCIDENTAL OR CONSEQUENTIAL DAMAGES FOR INJURIES TO THE FULLEST EXTENT PROVIDED BY LAW, INCLUDING BUT NOT LIMITED TO, LOSS OF PROFITS, LOSS OF MERCHANDISE, SUBSTITUTION, OR OTHER COMMERCIAL LOSS, FOR DAMAGE SUFFERED BY PURCHASER ARISING FROM A REVOLVINK MIXER, UNLESS SUCH DAMAGES OR INJURIES ARE CAUSED BY THE GROSS NEGLIGENCE OR INTENTIONAL ACTS OF RYONET®. RYONET® FURTHER DISCLAIMS ALL LIABILITY FOR BODILY INJURIES TO THE FULLEST EXTENT PROVIDED BY LAW.

**NO SELLER'S WARRANTY:** No person or entity, other than Ryonet®, who sells RevolvInk Mixers has the authority to make any guarantee, representation, promise, or warranty with respect to the RevolvInk Mixer unless the person or entity delivers to the purchaser a separate written guaranty certificate specifically guaranteeing the ink mixer, in which case Ryonet® shall have no obligation to the purchaser. Neither original manufacturers, distributors, or dealers, nor any other person or entity, has any authority to make any representation or promise on behalf of Ryonet® or to modify the terms or limitations of this warranty in any way..

#### **ADDITIONAL INFORMATION**

For additional information concerning the Ryonet® limited warranty, contact [support@ryonet.com](mailto:support@ryonet.com) or 1-360-576-7188.





# REVOLVINK

INK-MIXER\_ 091423\_B

REVOLVINK® - 1-360-576-7188