



Assembly Instructions

Riley Hopkins[®]

360



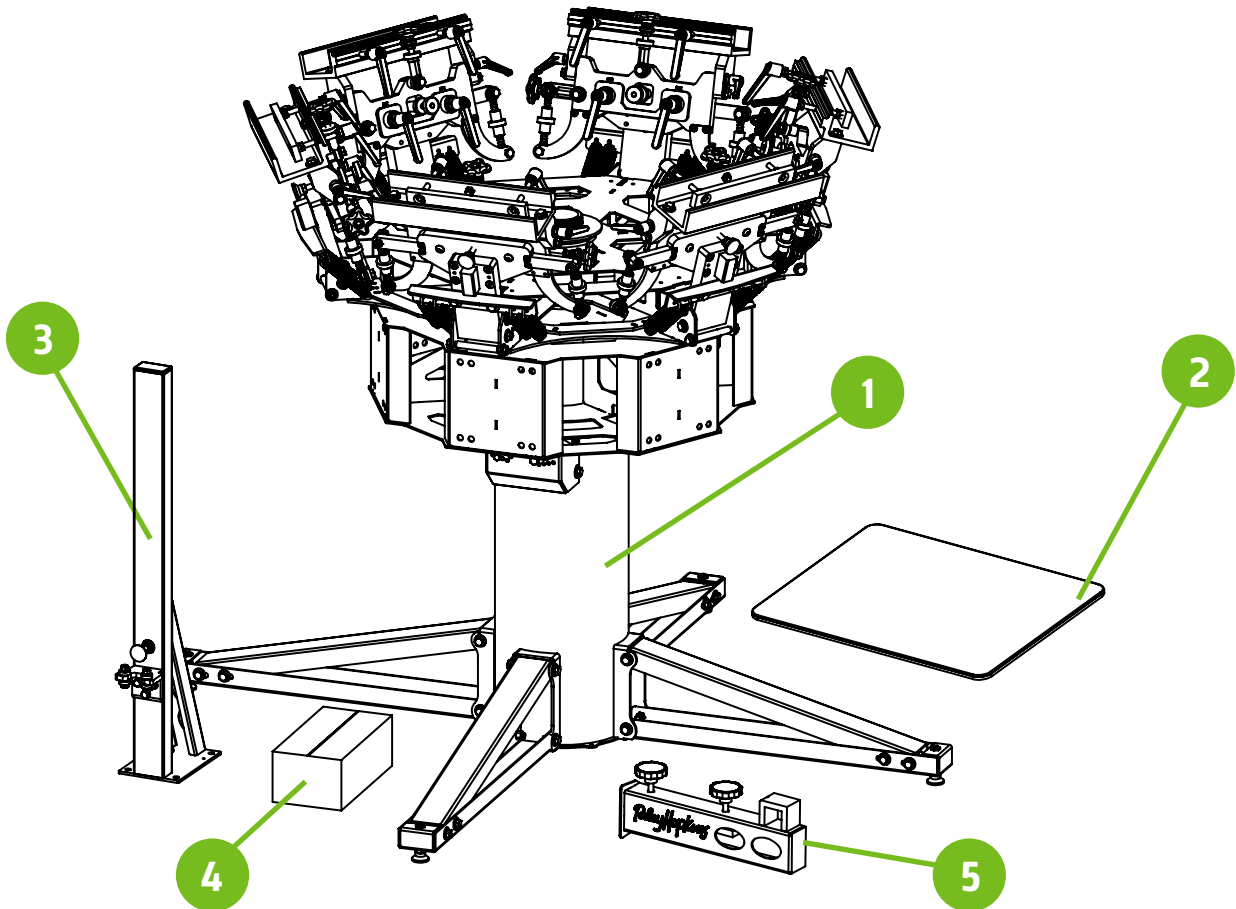


Tools Required:

- Two 9/16" wrenches
- One 1/2" Wrench
- Hammer

What's in the box

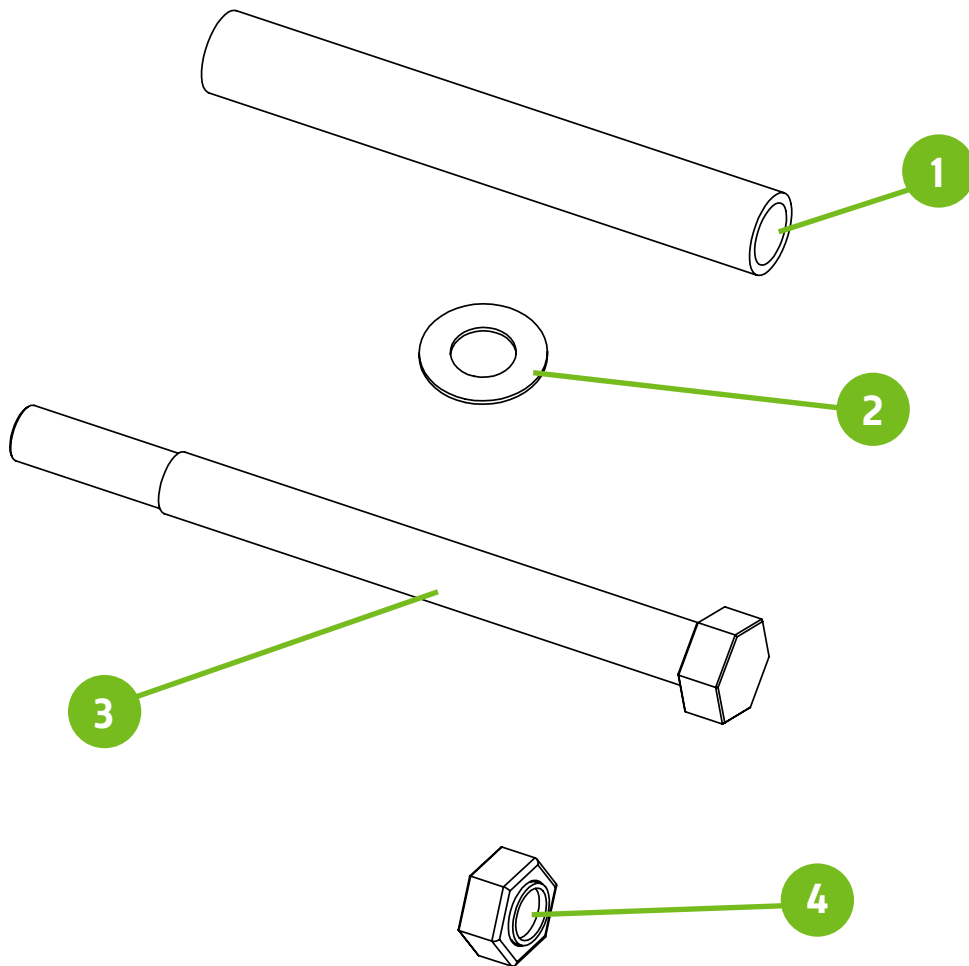
Tag	ITEM	Qty.
1	MAIN PRESS CORE (BACK CLAMP MODEL SHOWN)	1 PER UNIT
2	PLATEN ASSEMBLY	1 PER STATION
3	PRINT STATION (RILEY HOPKINS SHOWN)	1 PER STATION
4	HARDWARE KIT	1 PER UNIT
5	SIDE CLAMP ASSEMBLY (SIDE CLAMP MODELS ONLY)	1 RH & 1 LH per print head 1 RH



PRSA-RHCLRARMKIT

RILEY 360 PRINT HEAD STOP BOLT KIT-PER HEAD

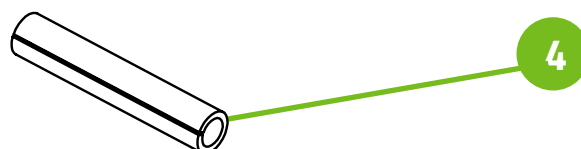
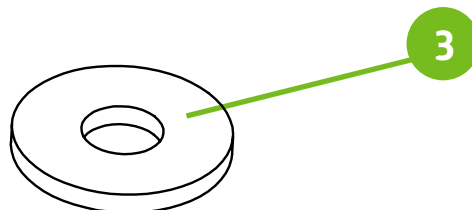
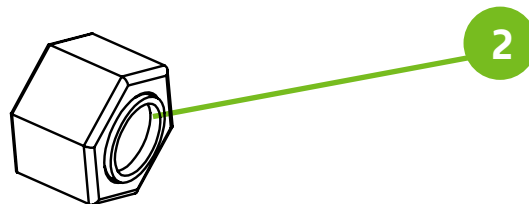
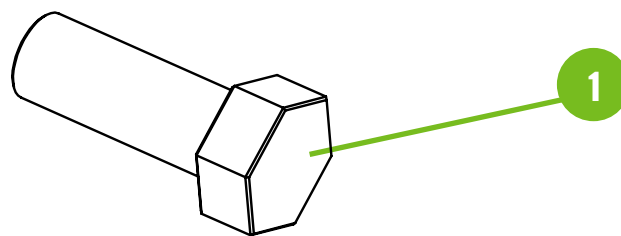
Tag	NAME/ID	DESCRIPTION	Qty.
1	PRCO-BMPRBLTCVRBLU	AIR HOSE FOR RILEY PRINT HEAD BUMP STOPS 3-1/2" LONG	2
2	PRHD-WA3/8SAE-SS	3/8 SAE FLAT WASHER STAINLESS STEEL	4
3	PRHD-HC3/8NF4-1/2GR5ZC	3/8-24 X 4-1/2" HEX CAP SCREW GRADE 5 ZINC	2
4	PRHD-LNYN3/8NFGR5ZC	3/8-24 LOWPRO NYLOC NUT	2



PRSA-RHPSKIT

RILEY 360 PRINT STATION HARDWARE-PER STATION

Tag	NAME/ID	DESCRIPTION	Qty.
1	PRHD-NYN3/8NCGR5ZC	3/8-16 X 1 HEX CAP SCREW GRADE 5 ZINC	4
2	PRHD-NYN3/8NCGR5ZC	3/8-16 NYLOC NUT ZINC	4
3	PRHD-WA5/16USSGR5ZC	5/16 USS FLAT WASHER ZINC	8
4	PRHD-RP3/16X1ZC	3/16 X 1 ROLL PIN ZINC	2



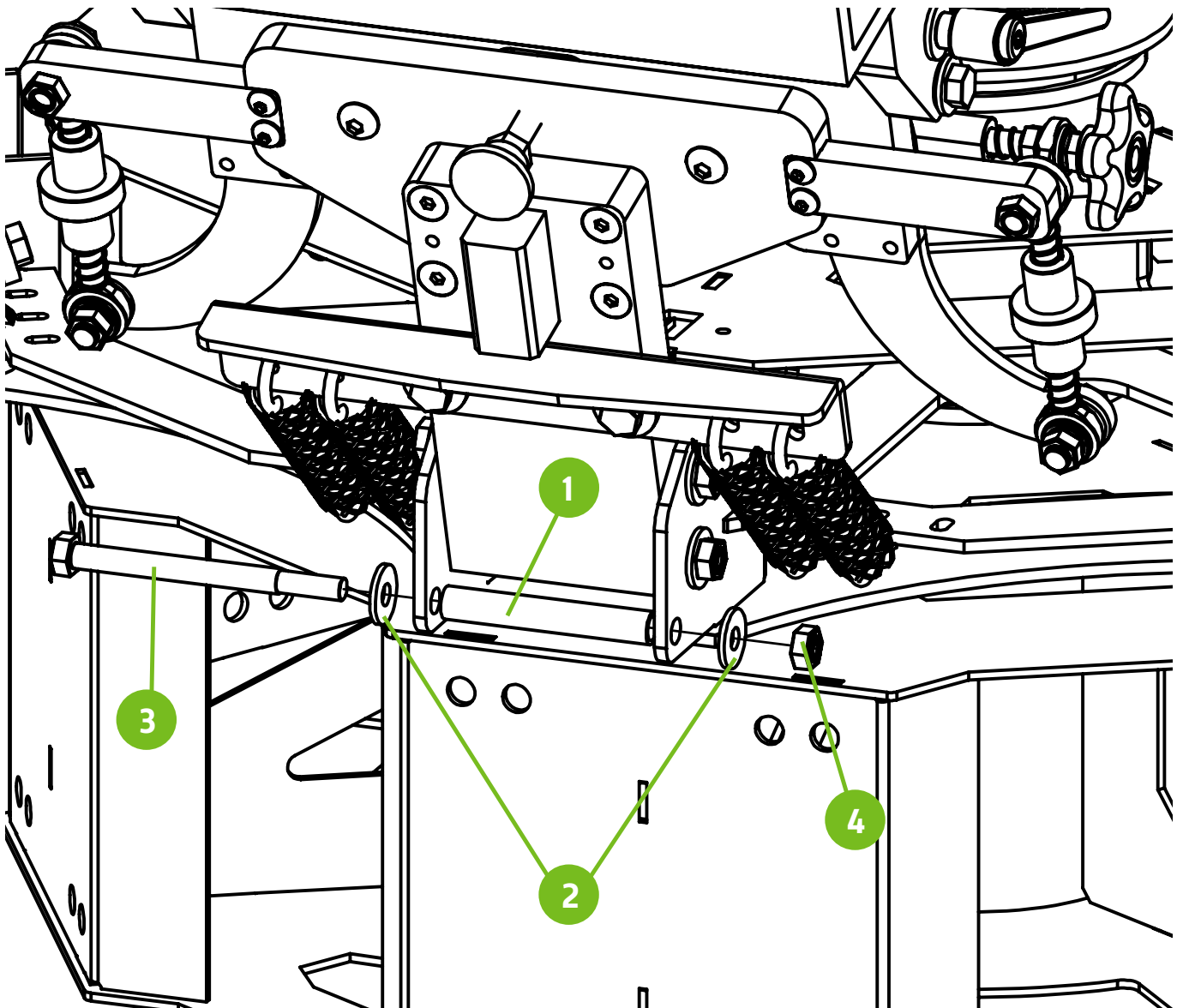
STEP 1

Install the lower bumper bolt assemblies. Do not overtighten hardware. Tighten just enough to hold in place.

NOTE: Refer to RHCLRARMKIT for hardware detail

/// CAUTION! ///

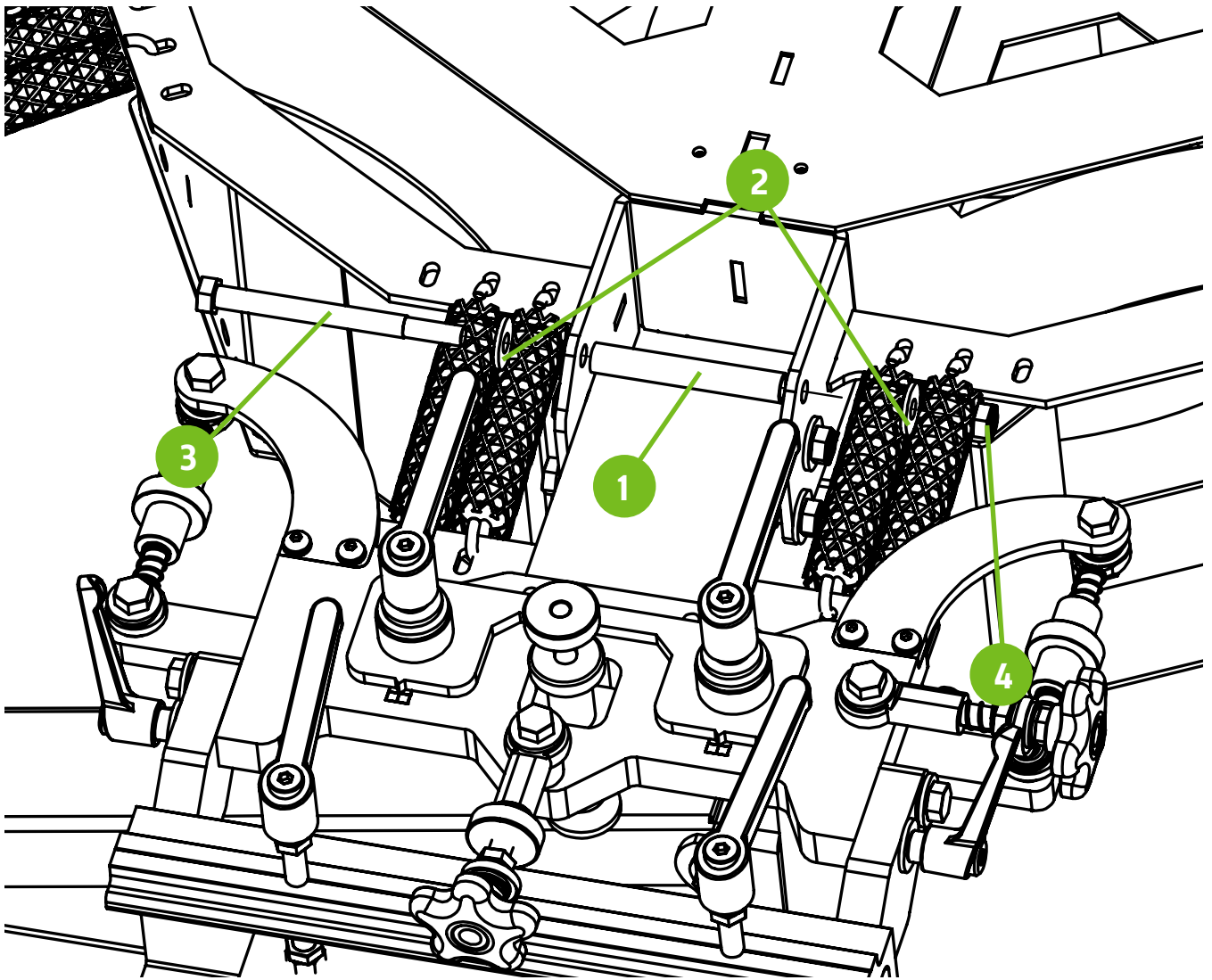
Before dropping the print heads, ensure that spring hooks are engaged in the slots. The hooks must be facing upward. **WARNING: EXTREME FORCE. INSTALL WITH CAUTION!**



STEP 2

Drop printhead into the down position, resting on the lower stop bolt previously installed. Install the Upper bumper bolt assemblies. Do not overtighten hardware. Tighten just enough to hold in place.

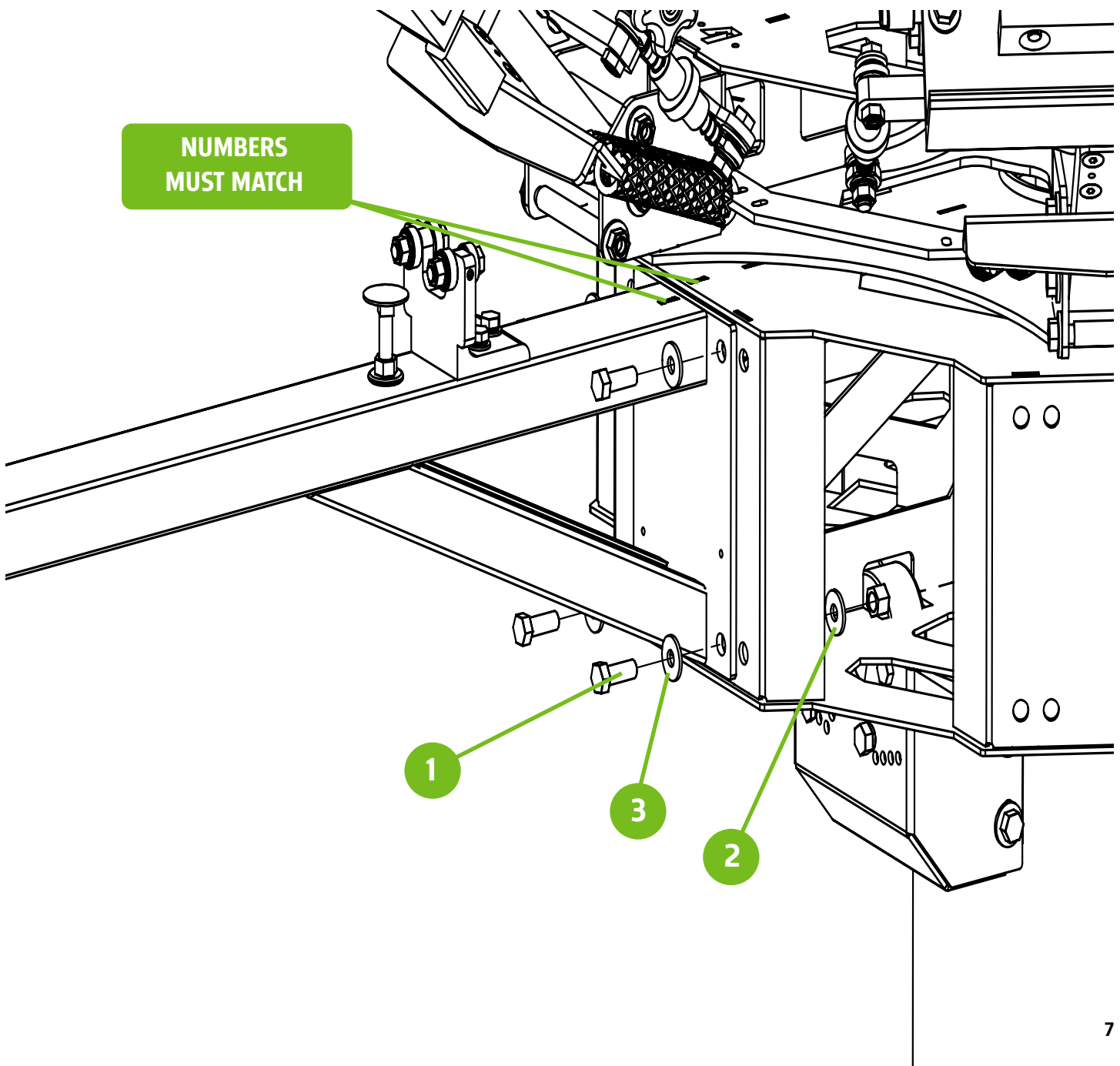
NOTE: Refer to RHCLRARMKIT for hardware detail.



STEP 3

Install the print stations with supplied hardware. Ensure the number on the print station matches the number on the center rotary. Failure to do so, will shift the platens out of alignment. Do not fully tighten at this time. They must be snug but loose enough to adjust with bumps of the hand. Riley Hopkins arm shown. R0Q compatible arms will follow the same process using the outer set of mounting holes.

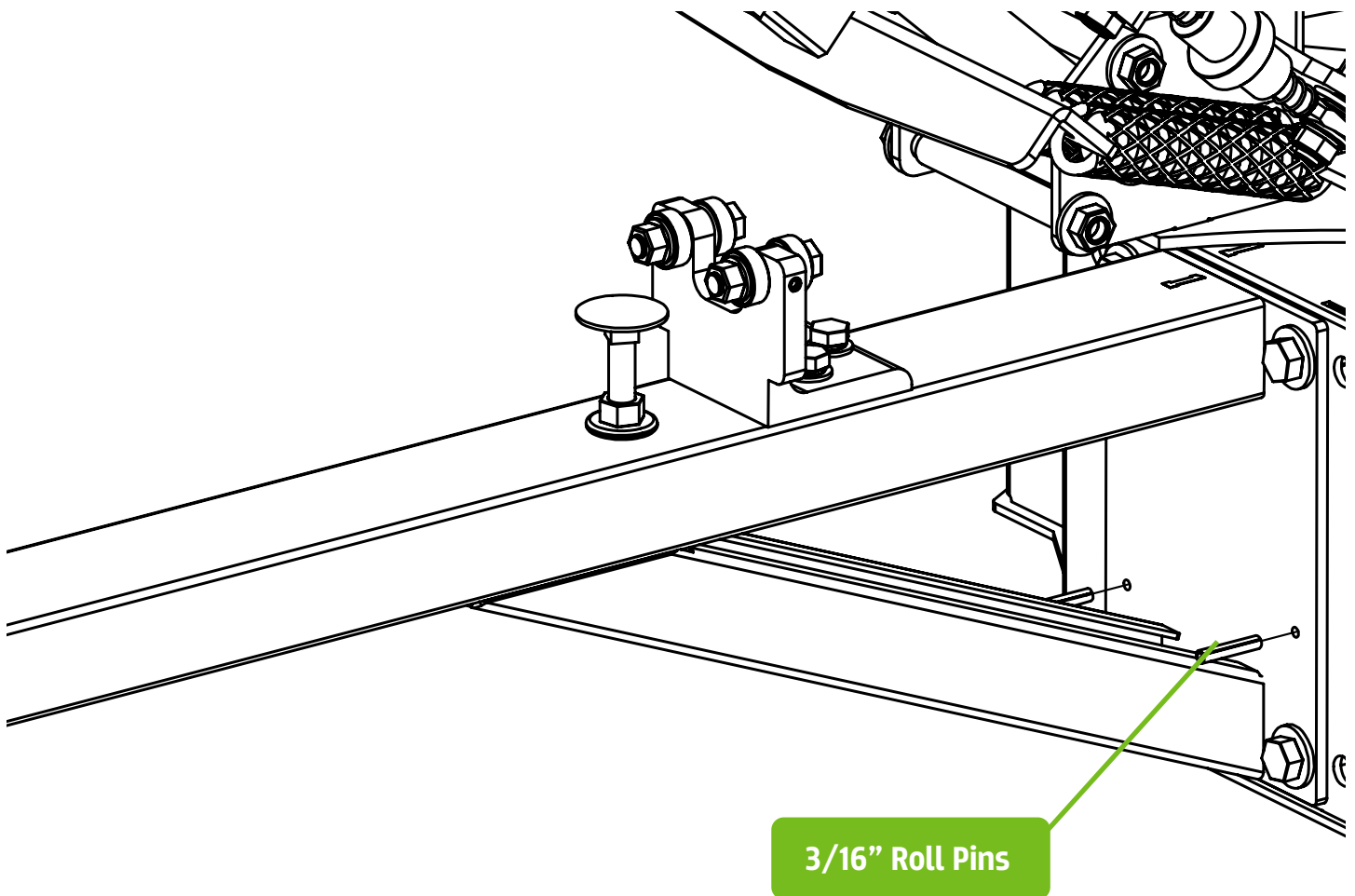
Note: Refer to RHPSKIT for hardware detail.



STEP 4

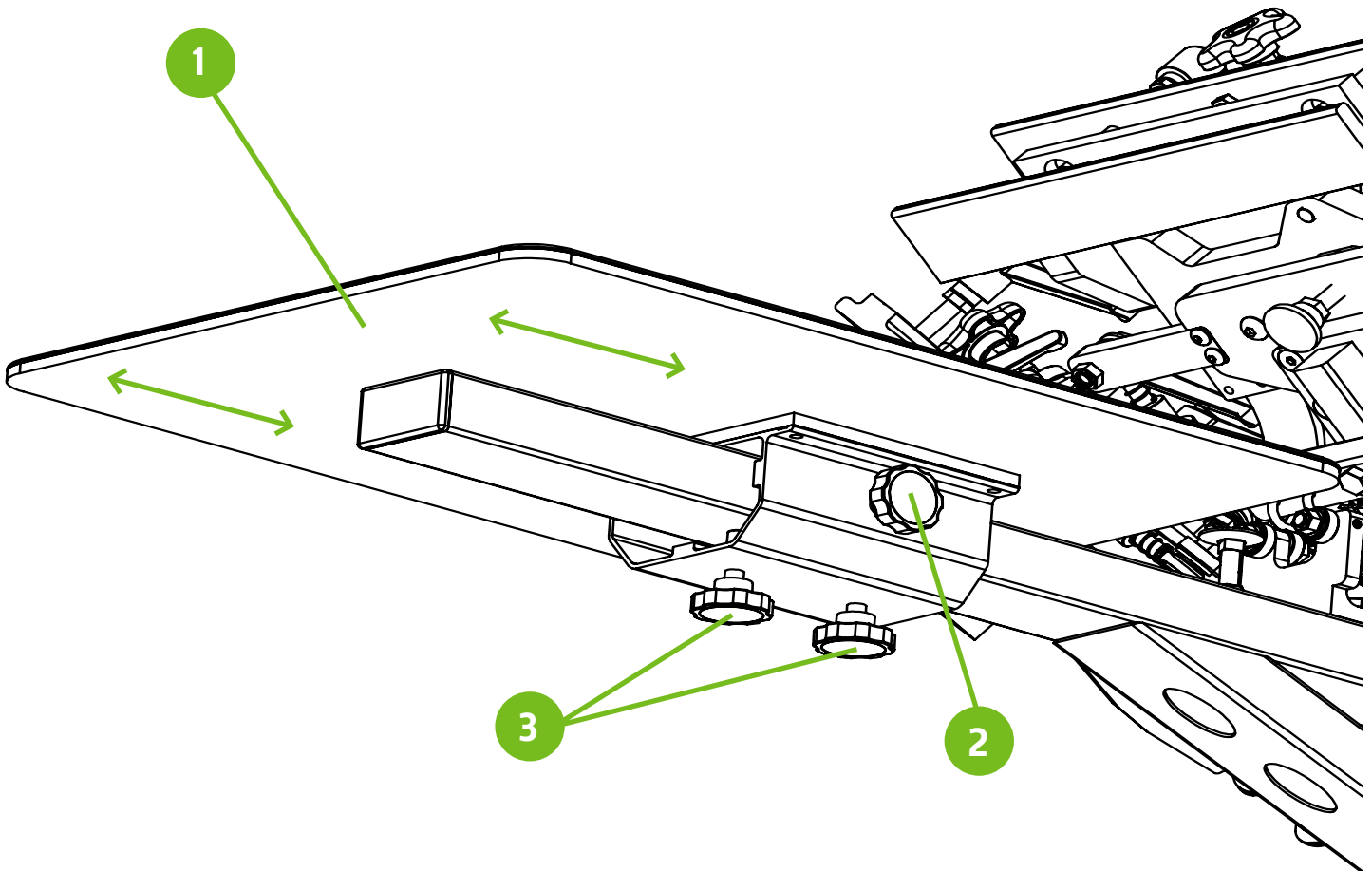
Install the 3/16" roll pins to locate the print station. Tap print station to align holes visually as close as you can. This is a factory setting that ensures your platens are aligned to each other. Tap them in approx. 1/2" with a hammer. After pins are seated, fully tighten the print station hardware. Riley Hopkins arm shown. ROQ compatible arms will follow the same process.

Note: Refer to RHPSKIT for hardware detail.



STEP 5

Install the platens onto the print stations. Set the platen (1) in the desired position. To lock in place, first tighten the side knob (2). Then tighten the lower knobs (3).



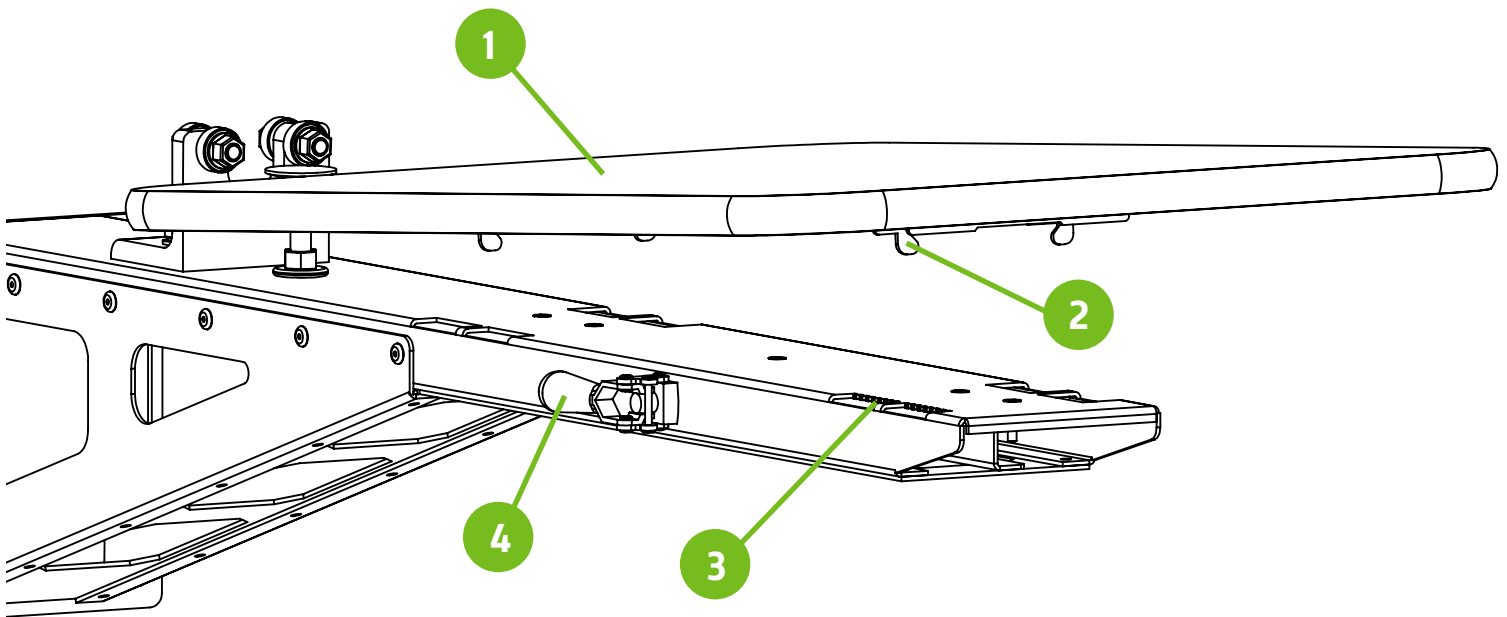
STEP 6

R0Q Compatible Station Arms

To install the platens (1) into the print station, Align the platen clips (2) with the tooth slots (3) to set the desired platen location.

To lock the platens in place, Rotate the locking lever (4) 180 degrees. Once the platen is in the desired position rotate back the opposite direction to engage the locking slider plate.

Note: R0Q compatible arms will accept standard R0Q compatible platens that are 24" deep.



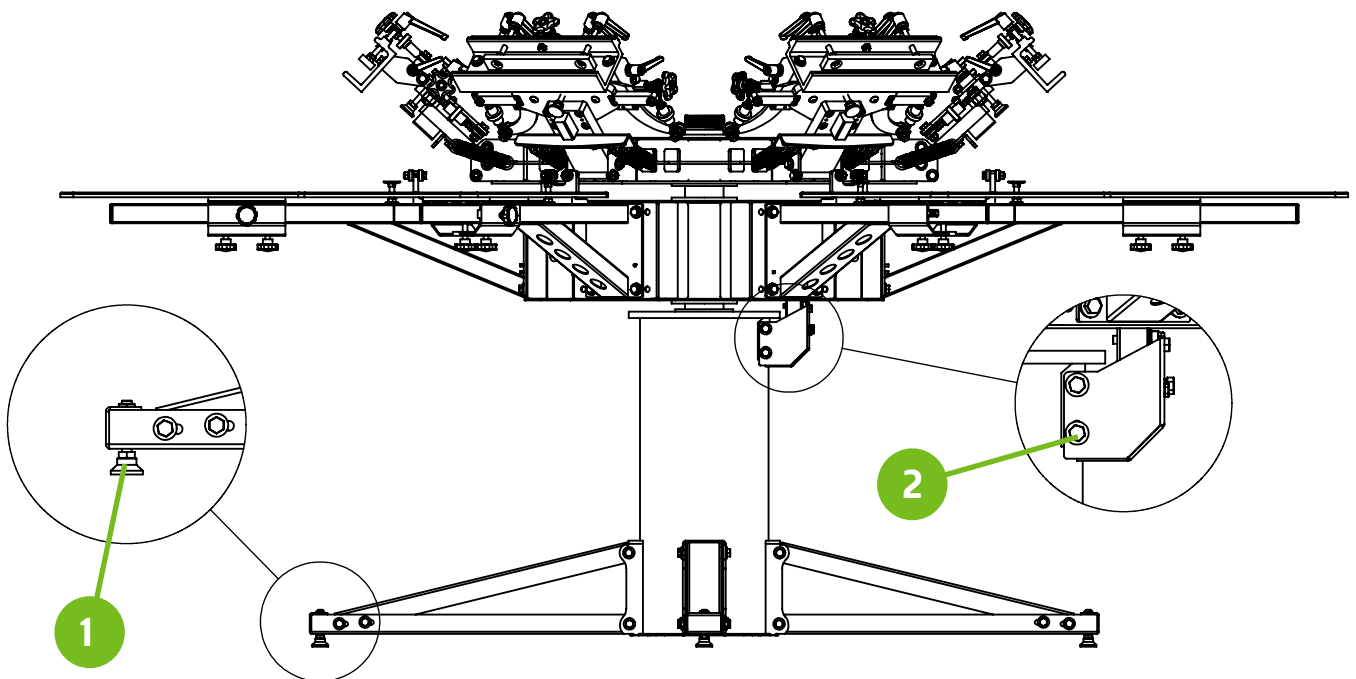
STEP 7

Install Leveling Feet and Optional Adjustments

For uneven floors, install leveling feet (1) & adjust to stabilize the unit. To increase or decrease tension on the print station detent bracket, loosen 3/8" bolts (2).

Raise detent assembly for higher tension and lower assembly for less tension.

Tag	NAME/ID	DESCRIPTION	Qty.
1	PRHD-LF3/8NC2HD	3/8 X 2" HEAVY DUTY SWIVEL LEVELING FOOT	4 PER UNIT
2	PRHD-HC3/8NC1GR5ZC	3/8-16 X 1 HEX CAP SCREW GRADE 2 ZINC	4 PER UNIT

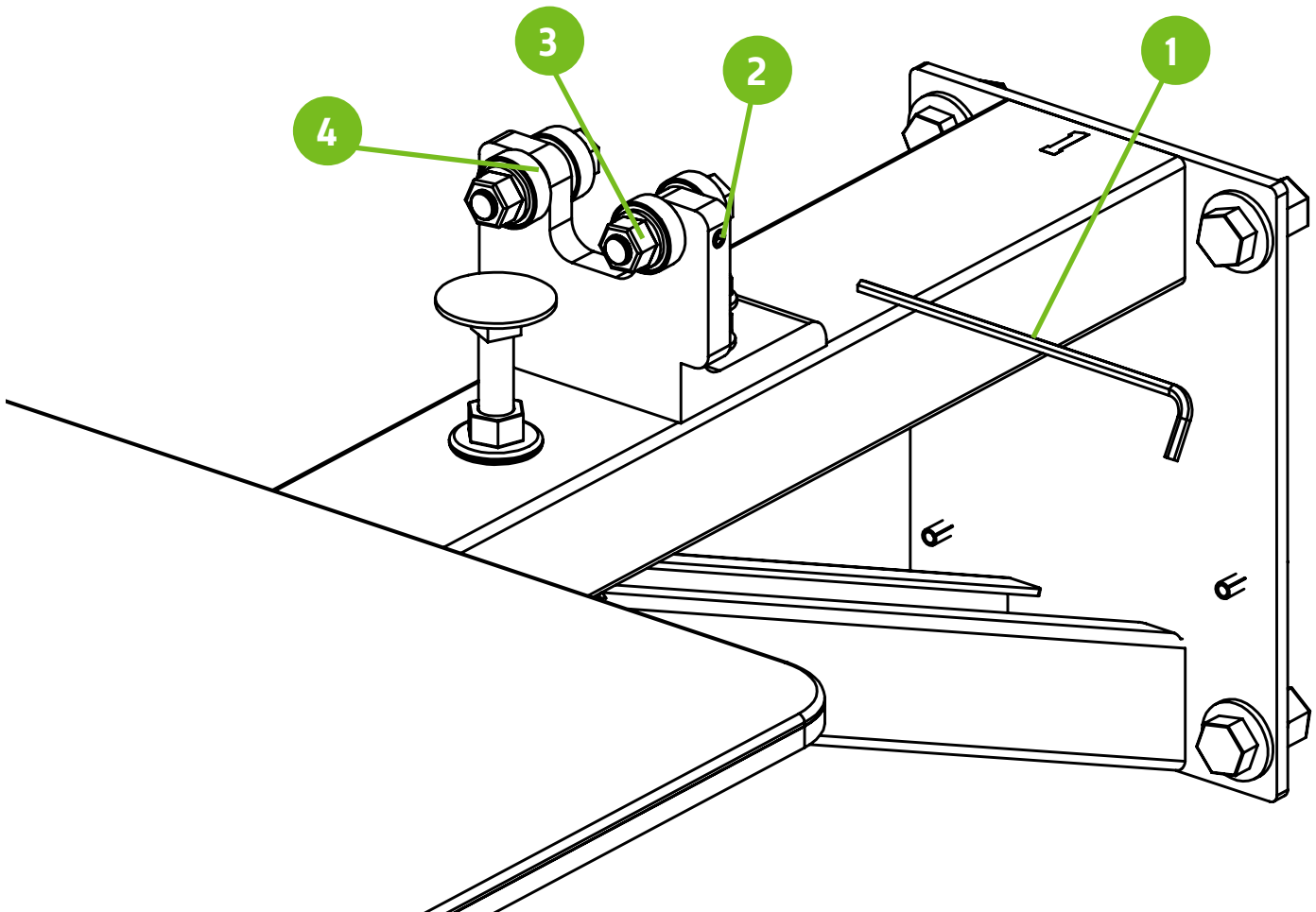


STEP 8

Bearing gate adjustment.

To adjust the locking tightness of the bearing gate assembly, first slightly loosen the 5/16" hardware (3) on the set screw side of the gate. To tighten the gate, turn set screw clockwise toward the stud holding bearings. Once in desired position, retighten the 5/16" hardware.

Tag	NAME/ID	DESCRIPTION	Qty.
1	PRHD-HXWRNCH3/32	1/8" HEX WRENCH	1
2	PRHD-SCW1/4X3/8	SET SCREW 1/4-20 X 3/8" LONG-BLACK OXIDE	1
3	PRHD-LNYN5/16NFG5ZC	5/16-24 LOWPRONYLOCZINC	2
4	PRCO-DETWHLBRNG	WHEEL BEARING - GATE ASSEMBLY	4

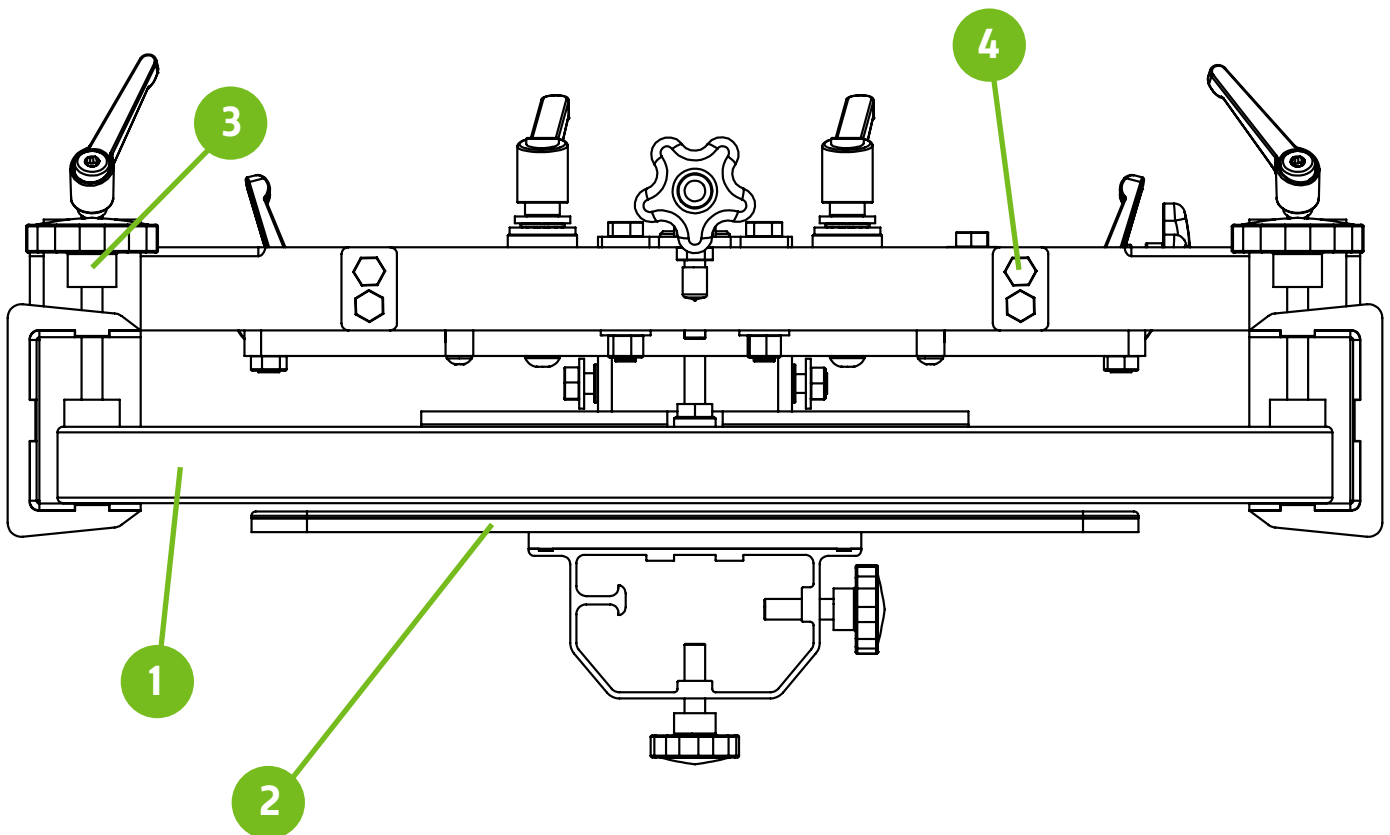


STEP 9

Level the screen clamping heads to the pallets. This one-time setting will work for the vast majority of printing jobs. Future adjustment may be required to accommodate “custom” platens that are much higher than standard. **Note:** Back Clamp models will ship pre-calibrated to the platens. Omit this step for Back Clamp models.

Screen Alignment:

Clamp the screen (1) into the side clamp assembly. Level the screen to the platen (2) in the down position. Slightly loosen the 5/16” hardware (4) to precision level the printing head to the platen. It is recommended to use the same platen to set all the printing heads. To adjust and lock the screen in place, use the four locking knobs (3).

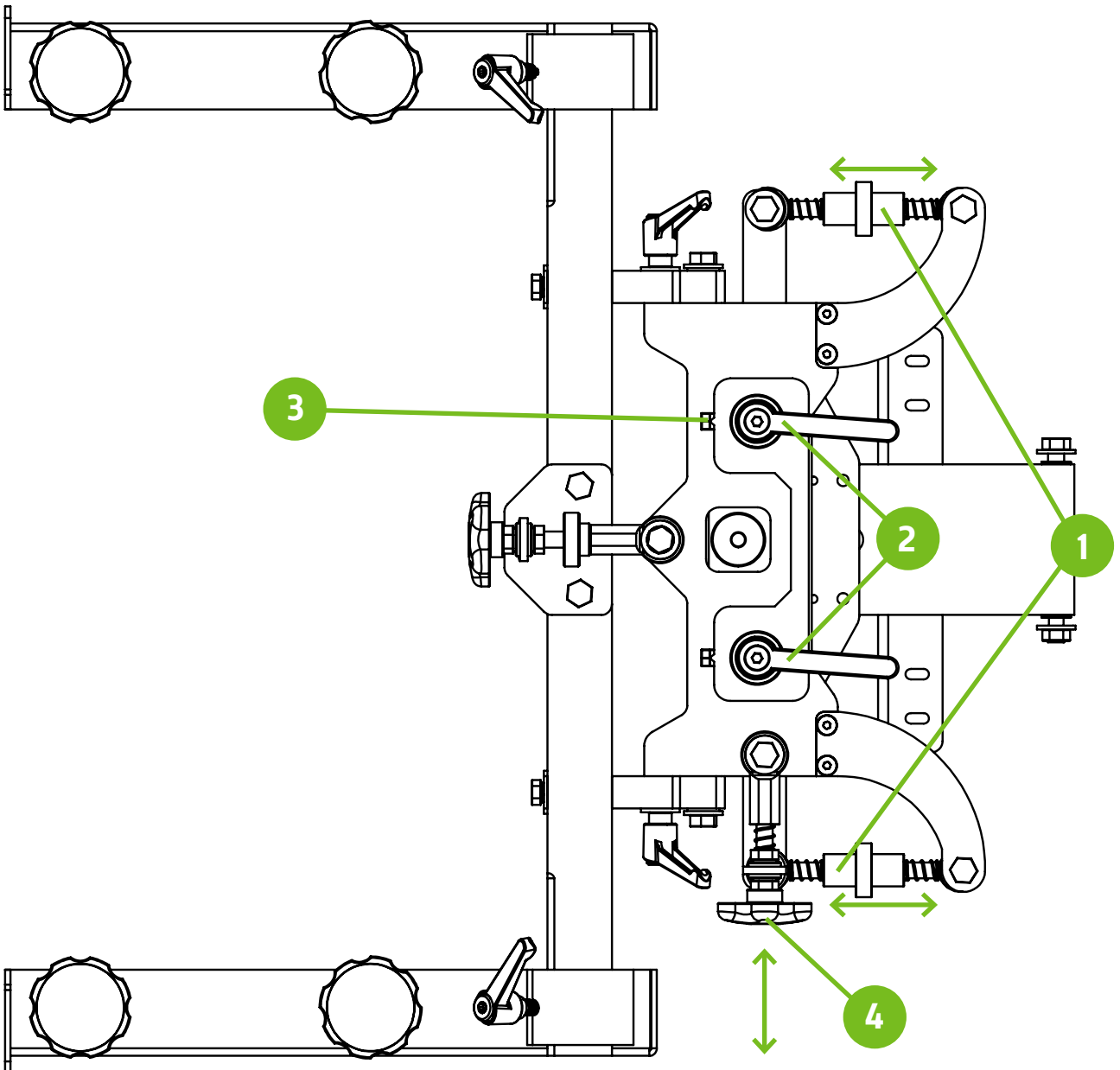


STEP 10

(X/Y Micro adjustments)

Before adjusting registration in the print head you must first loosen the micro lock-down levers (2). To adjust front-to-back use the turnbuckle knobs on the sides of the print head assembly (1).

To adjust registration side-to-side, use the long knob on the side of the assembly (4). To get back to “zero” use the pointer on the top of the print head assembly and line up with the center of the hole (3).

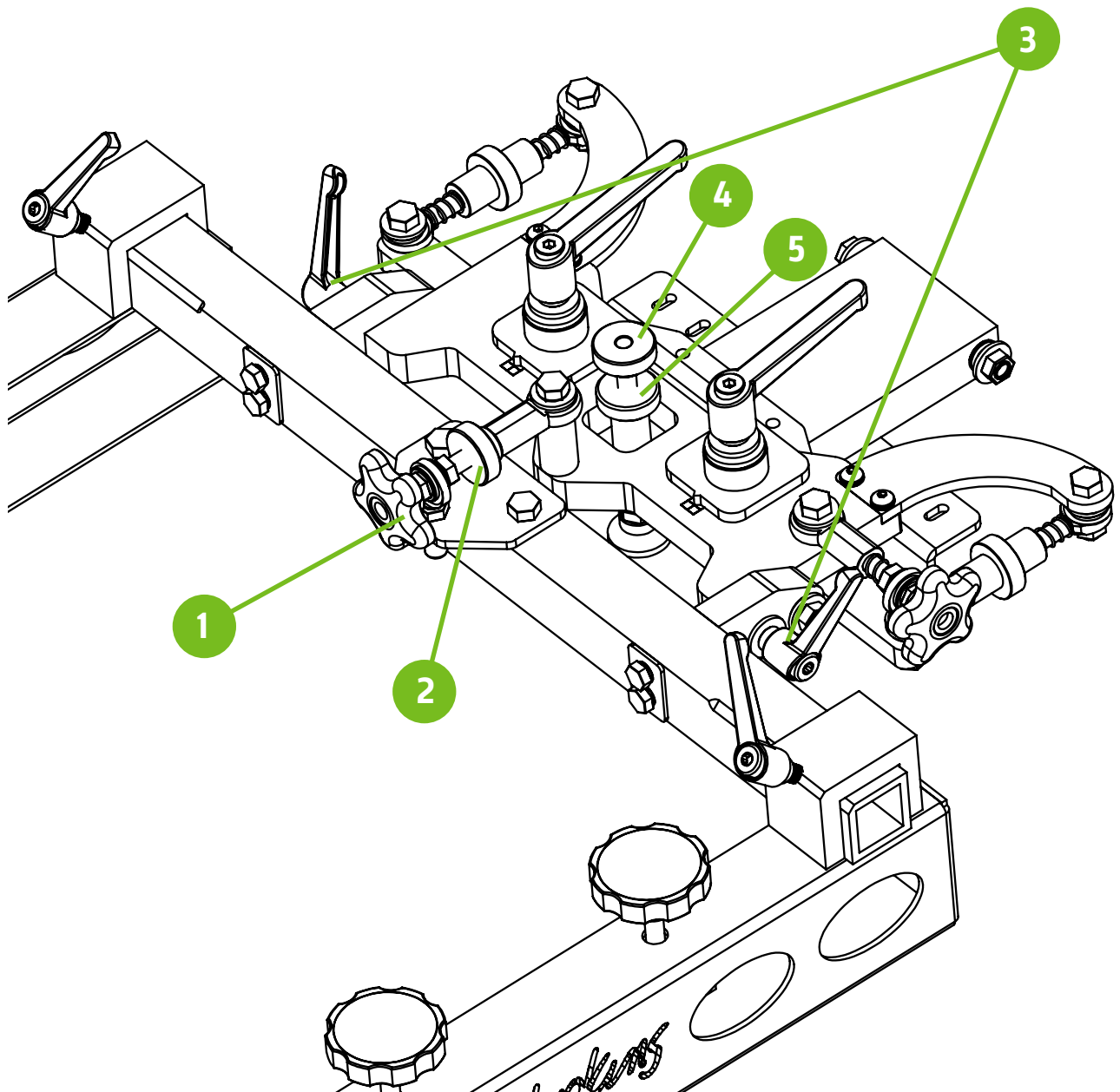


STEP 11

Tilt/Off-Contact Micro adjustments

Before adjusting off-contact (4) you must first loosen the off-contact jam knob (5). Once the desired off-contact is set, retighten the jam knob to hold in place.

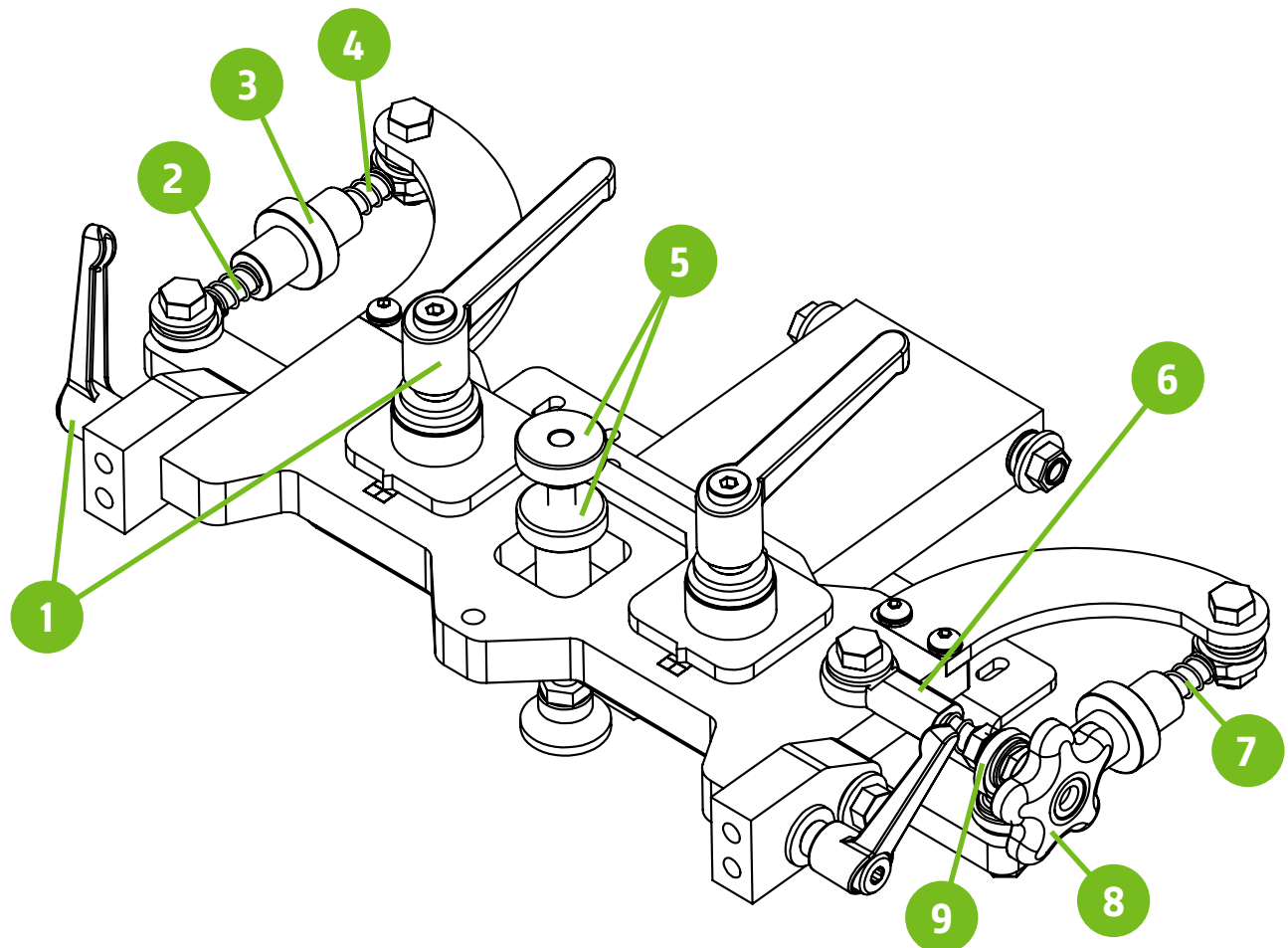
Before adjusting the tilt micro (1) you must loosen the tilt jam knob (2). Slowly loosen the tilt locking lever (3). Once desired tilt is set, retighten the jam knob first and then the locking lever.



PRSA-RH360PHED

RILEY 360 PRINT HEAD SUB-ASSEMBLY

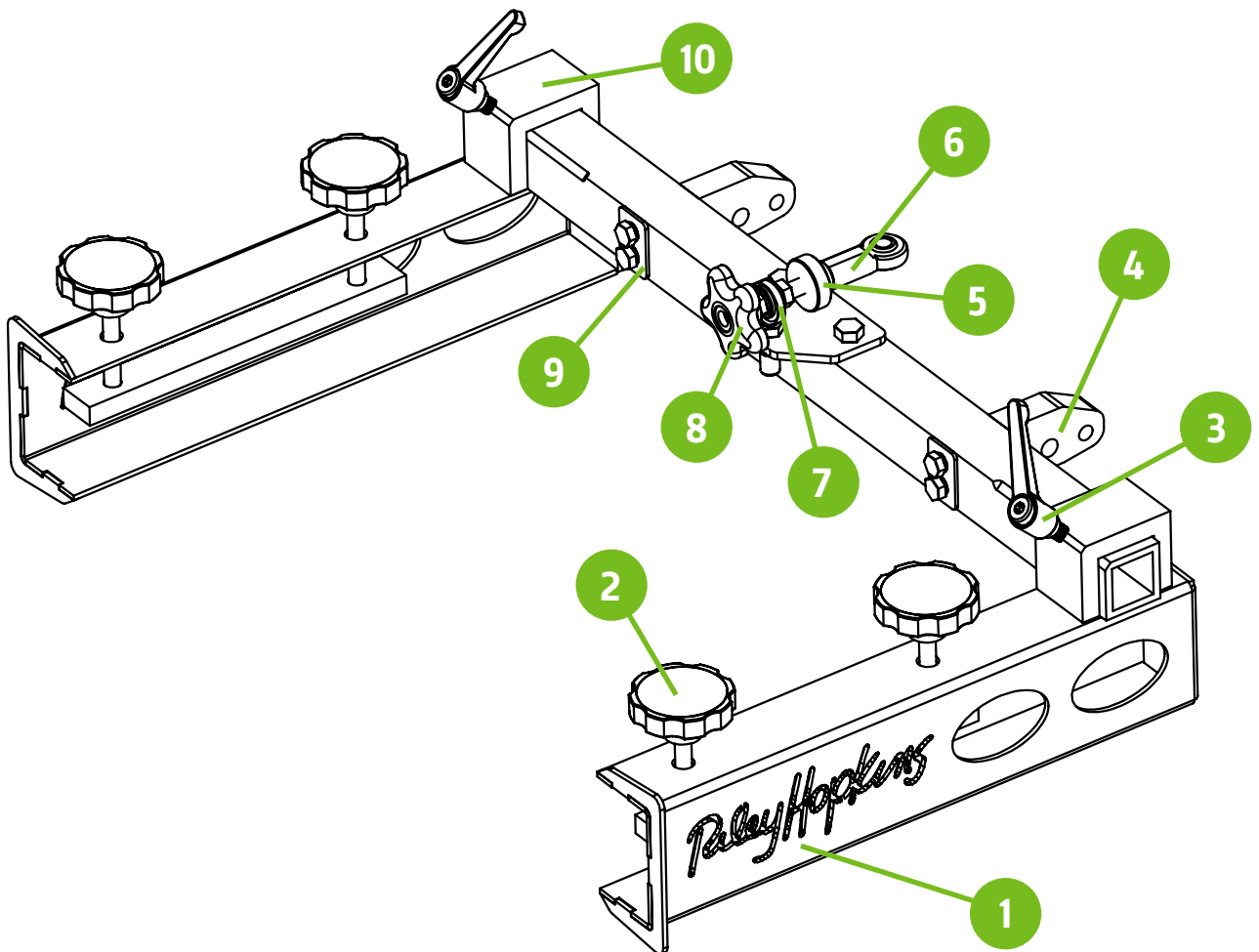
Tag	NAME/ID	DESCRIPTION	QTY
1	PRCO-KNBRCHT3/8NCFM	3/8 -16 INCH COURSE RATCHET HANDLES	4
2	PRCO-RDED3/8RHML	3/8-24 MALE ROD ENDS RIGHT HAND THREAD	2
3	MFMS-RH360TKNOB	RILEY 360 TURNBUCLE KNOB 3/8-24	2
4	PRCO-RDED3/8LHML	3/8-24 MALE ROD ENDS LEFT HAND THREAD	2
5	MFMS-RH360KNB1	RILEY 360 3/8-16 OFF-CONTACT KNOBS	2
6	PRCO-RDED3/8RHFM	3/8-24 FEMALE ROD ENDS RIGHT HAND THREAD	1
7	PRCO-RH360SPG1	RILEY 360 MICRO SRPING	5
8	PRCO-KNBSTR3/8	STAR KNOB WITH HEX HOLES FOR PUSH-IN 3/8 HARDWARE	1
9	PRCO-RDED3/8RHML	3/8-24 MALE ROD ENDS RIGHT HAND THREAD	1



PRSA-RH360SC

RILEY 360 SIDE CLAMP SUB-ASSEMBLY

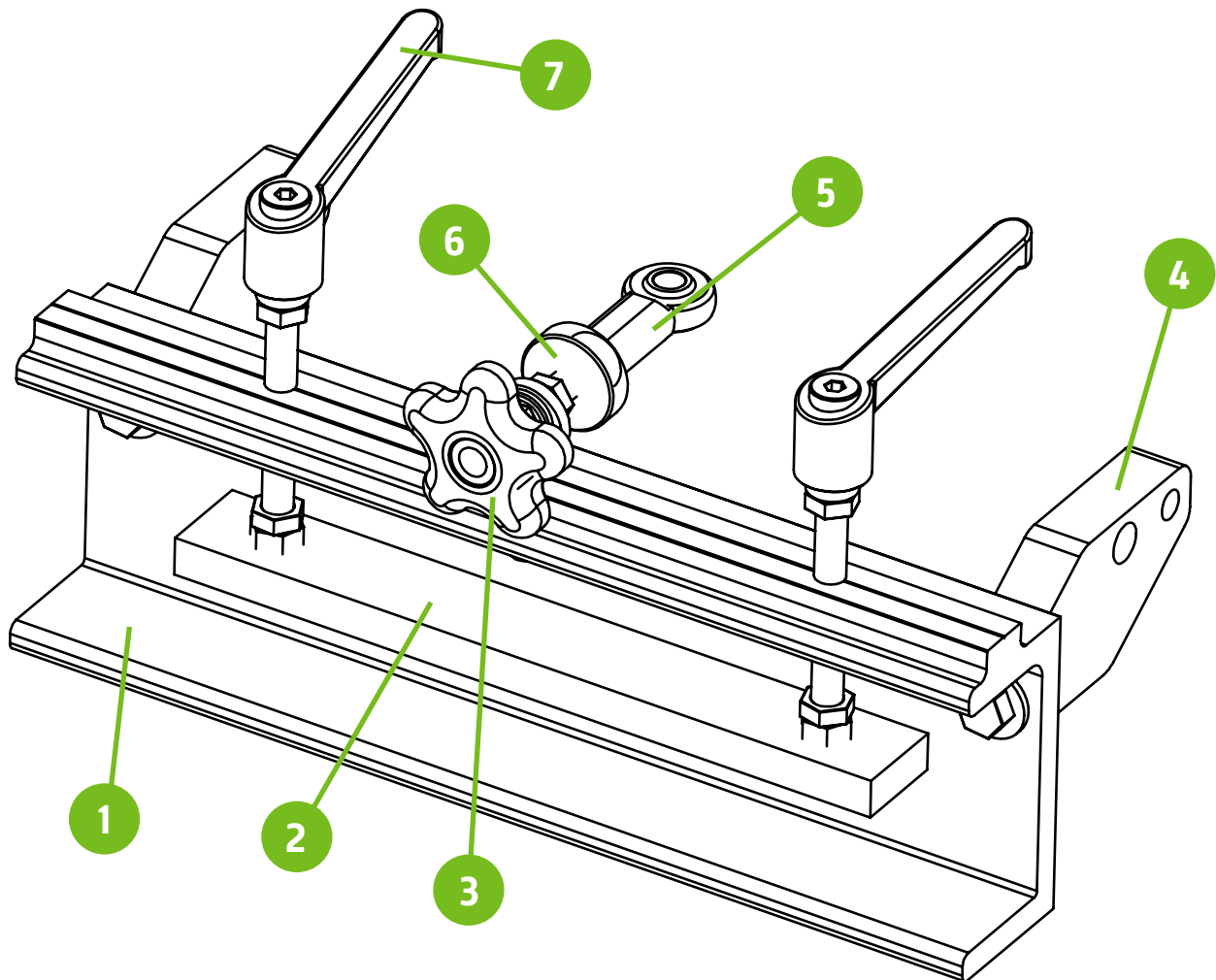
Tag	NAME/ID	DESCRIPTION	QTY
1	MFPD-RH360SCBDY	RILEY 360 SIDE CLAMP BODY (RIGHT HAND SHOWN)	2
2	PRCO-KNBSFT3/8NC3	2.5" SOFT TOUCH FLUTED KNOB 3/8"-16 X 3" ZINC STUD	4
3	PRCO-KNBRCHT3/8NCFM	3/8 -16 INCH COURSE RATCHET HANDLES	2
4	MFMS-RH360TILT1	RILEY 360 SIDE CLAMP TILT BRACKET	1
5	MFMS-RH360KNB2	RILEY 360 3/8-24 TILT KNOBS	1
6	PRCO-RDED3/8RHFM	3/8-24 FEMALE ROD ENDS RIGHT HAND THREAD	1
7	PRCO-RDED3/8RHML	3/8-24 MALE ROD ENDS RIGHT HAND THREAD	v
8	PRCO-KNBSTR3/8	STAR KNOB WITH HEX HOLES FOR PUSH-IN 3/8 HARDWARE	1
9	MFLS-RH360SCCLIP2	RILEY 360 SIDE CLAMP DUAL WASHER CLIP	2
10	MFMS-RH360SCBLK	RILEY 360 SIDE CLAMP MOUNTING BLOCK	2



PRSA-RH360BCP

RILEY 360 BACK CLAMP SUB-ASSEMBLY

Tag	NAME/ID	DESCRIPTION	QTY
1	MFMS-RH360CPHD	RILEY 360 BACK CLAMP BODY	2
2	MFMS-RH360CPBR	RILEY 360 BACK CLAMP LOCKING BAR	4
3	PRCO-KNBSTR3/8	STAR KNOB WITH HEX HOLES FOR PUSH-IN 3/8 HARDWARE	2
4	MFMS-RH360TILT2	RILEY 360 BACK CLAMP TILT BRACKET	1
5	PRCO-RDED3/8RHF	3/8-24 FEMALE ROD ENDS RIGHT HAND THREAD	1
6	MFMS-RH360KNB2	RILEY 360 3/8-24 TILT KNOBS	1
7	PRSA-KNB3/8RHTX4	RILEY HOPKINS LEVER KNOB WITH 3/8" STUD	1





While we take pride in our quality and do our best to ensure your satisfaction, Riley Hopkins™/Ryonet® does not assume any liability for damages, whether consequential or incidental, that may result from the misuse of below stated specifications.

LIMITED WARRANTY

GENERAL PROVISIONS: The warranties described below apply ONLY to the original purchasers of new Riley Hopkins™ presses from Ryonet®, purchased on or after April 20, 2013. Under these warranties, Ryonet® will repair or replace, as Ryonet® elects, covered defective parts, materials, or workmanship without charge for parts or the reasonable cost of labor related thereto. Ryonet® will use only new or re-manufactured parts or components furnished by Ryonet® or a Ryonet® authorized third party.

WARRANTY DURATION: A lifetime warranty shall apply to covered Riley Hopkins presses, parts, components and materials purchased by Band Members. Non-Band members who purchase a Riley press will receive the stated limited warranty for a 2-year period from date of purchase.

WHAT IS COVERED: This warranty covers all non-wearable parts, non-wearable components, and non-wearable materials of new Riley Hopkins™ presses. HOWEVER, the following items are excluded from the scope of this warranty: expendable parts (including but not limited to bearings, springs, nylon bolts, oilites and fasteners). FURTHER, Ryonet® does not warrant failure of parts or components resulting from misuse or lack of proper maintenance, or improper installation.

WHAT IS NOT COVERED: Installation, inspection, and routine maintenance costs are the sole responsibility of the purchaser; used equipment; any equipment modified or altered in any way not approved by Ryonet® in writing including, but not limited to, disassembling bearing components; routine maintenance and lubrication; consequences of negligence, misuse, accident, or improper application, installation, or storage of the press; consequences of any service performed by someone other than a Ryonet® authorized provider.

SECURING WARRANTY SERVICE: Warranty service must be requested of the nearest Ryonet® location. At the time of requesting warranty service, the person or entity requesting warranty service must be prepared to present evidence that it was the original purchaser of the Riley Hopkins™ press(es).

Written authorization must be obtained from Ryonet® before any part will be accepted. In order to return such defective part, contact Ryonet® to return such part freight prepaid. Replacement parts are sent out freight collect. Parts sent out prior to receiving defective part will be sent C.O.D., cost plus freight. Upon return of defective part, if it is deemed that the part was not damaged by customer but failed, the cost of the replacement part will be refunded.

NO REPRESENTATIONS OR IMPLIED WARRANTIES: WHERE PERMITTED BY LAW, RYONET® NOR ANY RYONET® AFFILIATE MAKES ANY GUARANTIES, WARRANTIES, CONDITIONS, REPRESENTATIONS, EXPRESS OR IMPLIED PROMISES, ORAL OR WRITTEN, AS TO THE NONOCCURENCE OF ANY DEFECT, THE QUALITY, OR PERFORMANCE OF RILEY HOPKINS™ PRESSES OTHER THAN THOSE SET FORTH HEREIN. FURTHER, RYONET® NOR ITS AFFILIATES DO NOT MAKE ANY IMPLIED WARRANTIES OR CONDITIONS OF MERCHANTABILITY OR FITNESS OTHERWISE PROVIDED BY THE UNIFORM COMMERCIAL CODE OR REQUIRED BY LAW TO THE FULLEST EXTENT PROVIDED BY LAW EXCEPT AS SET FORTH HEREIN. LIMITATION OF LIABILITY: The remedies set forth in this warranty are the purchaser's exclusive remedies in connection with the performance of, or any breach of any guarantee, condition, or warranty with respect to any new Riley Hopkins™ presses. In the event the above warranty fails to correct purchaser's performance problems caused by defects in workmanship and/or materials, purchaser's exclusive remedy shall be limited to payment for actual damages in an amount not to exceed the cost of the press. IN NO EVENT SHALL RYONET OR ANY AFFILIATE OF RYONET® BE LIABLE FOR INCIDENTAL OR CONSEQUENTIAL DAMAGES FOR INJURIES TO THE FULLEST EXTENT PROVIDED BY LAW, INCLUDING BUT NOT LIMITED TO, LOSS OF PROFITS, LOSS OF MERCHANDISE, SUBSTITUTION, OR OTHER COMMERCIAL LOSS, FOR DAMAGE SUFFERED BY PURCHASER ARISING FROM A RILEY HOPKINS™ PRESS, UNLESS SUCH DAMAGES OR INJURIES ARE CAUSED BY THE GROSS NEGLIGENCE OR INTENTIONAL ACTS OF RYONET®. RYONET® FURTHER DISCLAIMS ALL LIABILITY FOR BODILY INJURIES TO THE FULLEST EXTENT PROVIDED BY LAW. NO SELLER'S WARRANTY: No person or entity, other than Ryonet®, who sells the Riley Hopkins™ press has the authority to make any guarantee, representation, promise, or warranty with respect to any Riley Hopkins™ press unless the person or entity delivers to the purchaser a separate written guaranty certificate specifically guaranteeing the press, in which case Ryonet® shall have no obligation to the purchaser. Neither original Riley Hopkins™ manufacturers, distributors, or dealers, nor any other person or entity, has any authority to make any representation or promise on behalf of Ryonet® or to modify the terms or limitations of this warranty in any way.

ADDITIONAL INFORMATION

For additional information concerning the Riley Hopkins™/Ryonet® Press Warranty, contact support@ryonet.com or 1-800-314-6390

Riley Hopkins[®]