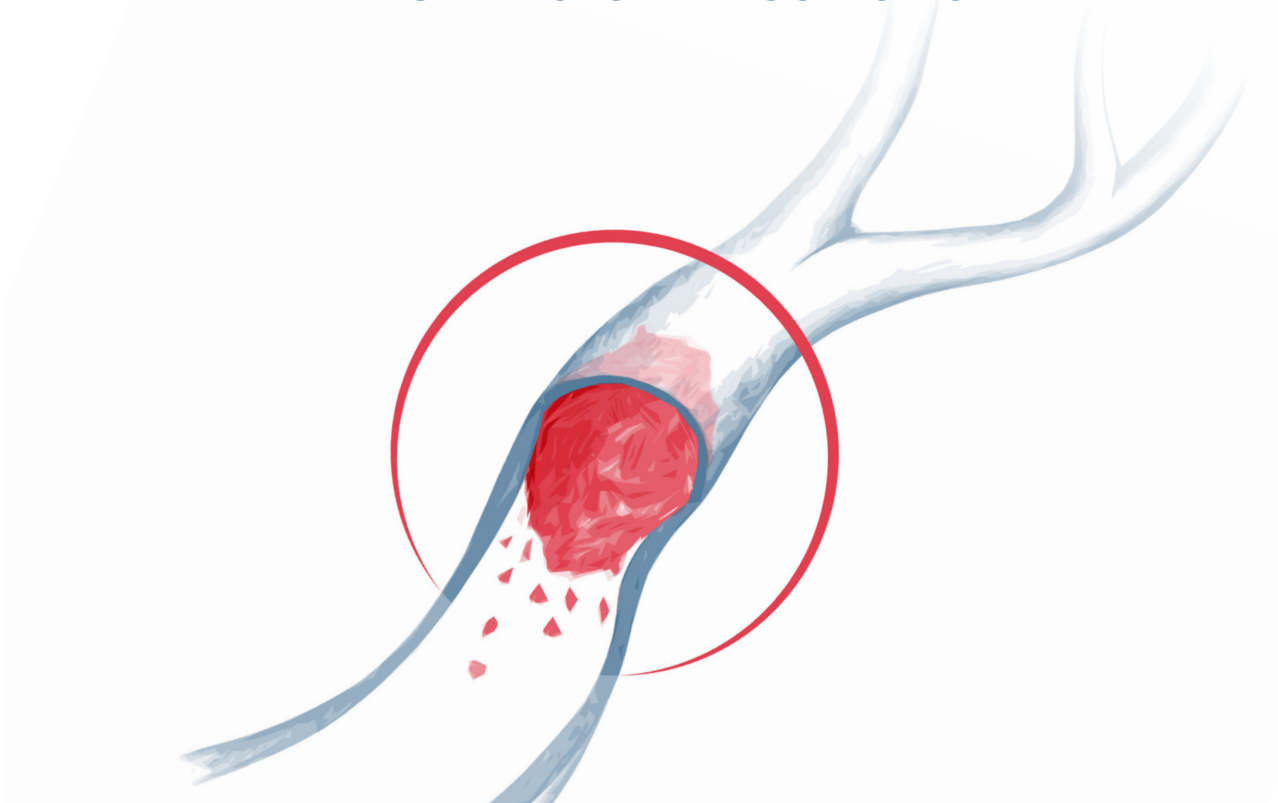


THROMBOTECH™ Synthetic Clot



**THE REALISTIC SYNTHETIC CLOT FOR SIMULATING
THROMBECTOMY PROCEDURES**



BIOMODEX®
EVIAS PLUS™ STATION

+



ISCHEMIC STROKE
CARTRIDGE

+



THROMBOTECH™
SYNTHETIC CLOT

=



ISCHEMIC STROKE
TRAINING

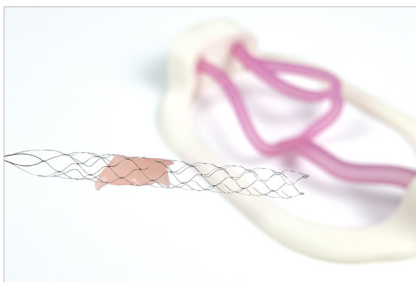
- ✓ Easy to use
- ✓ Stores for up to three weeks
- ✓ Realistic, life-like reactions with medical devices
- ✓ Used under images – radiopaque and radiolucent
- ✓ Comes in three textures (Hard, medium & soft)

WARNING: This product is not a medical device and is not intended to diagnose, treat, cure, or prevent any health condition. BIOMODEX® products have been designed for training and their safety and effectiveness as medical devices have not been demonstrated.

THROMBOTECH™ Synthetic Clot



STOP SCRAMBLING FOR CLOT ALTERNATIVES



Retrieved clot from Biomodex Cartridge

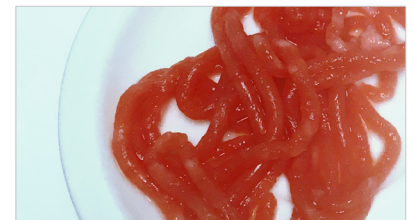
- ❖ The need for a viable clot solution has left physicians and the med tech industry scrambling for alternatives. Blood-based clots are expensive, difficult to transport, and have an extremely short shelf life. Blood clot simulation with things like children's slime or chicken liver are creative but ineffective and unnecessary.
- ❖ THROMBOTECH™ Synthetic Clot is easy to use, realistically simulates a real clot, and is designed for use with the BIOMODEX EVIAS Plus system.

AVAILABLE TEXTURES



Three sizes of Clot Textures

- ❖ Hydrogel-based clot technology
- ❖ Safe to touch
- ❖ **Soft:** Mimics Red Blood Cell (RBC) Clot
- ❖ **Medium:** Mimics RBC/Fibrin Clot
- ❖ **Hard:** Fibrin Rich Clot



Uncut clot before injection

USE WITH EVIAS PLUS SYSTEMS



BIOMODEX® EVIAS Plus™ with clot inserter attachment for thrombectomy procedures

THROMBOTECH™ was designed to support BIOMODEX® Biorealistic Haptic Simulator™. BIOMODEX's mission is to elevate training and rehearsals for physicians to improve patient outcomes. Thrombotech™ is the latest BIOMODEX® product that can be used with BIOMODEX® EVIAS Plus™ systems to simulate ischemic stroke thrombectomy procedures.

US Office:
300 Crown Colony Drive, Suite 504
Quincy, MA 02169 - USA

EMEA Office:
2 rue de la Roquette
75011 Paris - FRANCE

BIOMODEX.COM