

[www.mygildan.eu](http://www.mygildan.eu)

HOODS

**GILDAN®**  
*Heavy Blend™*



Ladies' Full Zip  
Hooded Sweatshirt



Youth  
Full Zip  
Hooded  
Sweatshirt



Hooded Sweatshirt

# HOODIES

Overhead	250
Full Zip	269
American Apparel	282
Sweat Jackets	290

GILDAN®

**12500****DryBlend® Adult Hooded Sweatshirt****Weight:** 305g/m<sup>2</sup> (287/m<sup>2</sup> White)**Fabric:** 50% Cotton, 50% Polyester

- Air jet yarn = softer feel and reduced pilling
- DryBlend® technology: delivers moisture-wicking properties
- Twin-lined hood with colour-matched drawcord



<b>S</b>	34-36
<b>M</b>	38-40
<b>L</b>	42-44
<b>XL</b>	46-48
<b>2XL</b>	50-52

**18500****Heavy Blend™ Adult Hooded Sweatshirt****Weight:** 271g/m<sup>2</sup> (257g/m<sup>2</sup> White)**Fabric:** 50% Cotton, 50% Polyester

- Air jet yarn = softer feel and reduced pilling
- Twin-lined hood with colour-matched drawcord
- Twin needle stitching at shoulder, armhole, neck, waistband and cuffs

<b>S</b>	34-36
<b>M</b>	38-40
<b>L</b>	42-44
<b>XL</b>	46-48
<b>2XL</b>	50-52
<b>3XL</b>	54-56
<b>4XL</b>	58-60
<b>5XL</b>	62-64



**A Modern Classic**  
Now available in 45 colours

sg



## SG27 Men's Hoodie

**Weight:** 280g/m<sup>2</sup>

**Fabric:** 80% combed ring-spun Cotton, 20% Polyester

- Simple kangaroo pocket
- Drawcord hood
- Rib cuff and hem

<b>S</b>	38-40
<b>M</b>	42-44
<b>L</b>	44-46
<b>XL</b>	46-48
<b>2XL</b>	48-50
<b>3XL</b>	50-52
<b>4XL</b>	52-54
<b>5XL</b>	54-56

## SG27F Ladies' Hoodie

**Weight:** 280g/m<sup>2</sup>

**Fabric:** 80% combed ring-spun Cotton, 20% Polyester

- Simple kangaroo pocket
- Drawcord hood
- Rib cuff and hem

<b>XS</b>	30-32
<b>S</b>	32-34
<b>M</b>	34-36
<b>L</b>	36-38
<b>XL</b>	38-40
<b>2XL</b>	40-44





# THE B&C PST LINE

## HIGH QUALITY SWEATSHIRTS



WHEN **COMFORT** IS EVERYTHING



### ++ THE REAL BENEFITS OF PST ++

#### OUTER 100% ring-spun combed cotton

Exceptional and smooth  
100% cotton printing surface.  
Allow standard cotton screen print inks use.  
Luxurious appearance and hand feel.  
Maximum comfort  
and excellent pilling-resistance.

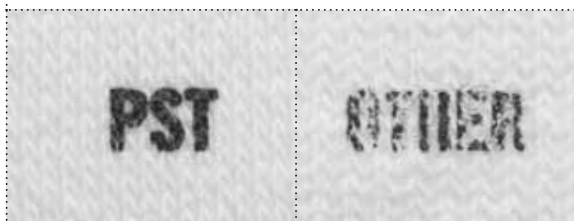
#### INNER made of 80% cotton/20% polyester blend

Outstanding wash-resistance.  
Very low shrinkage.  
Unbeatable durability wash after wash.  
Maximum comfort and insulation.

### COTTON PRINTABILITY, POLYESTER RESISTANCE

Our aim is always to provide you with the best support for your creativity. This is what drove us to develop our innovative and exclusive sweatshirt fabric, to give you the best surface for decoration combined with great durability, wash resistance and guaranteed comfort for the wearer.

VISIBLY MORE PRINTABLE – OUTER = 100% COTTON



OUTER

**100%**  
COTTON



[WWW.BC-FASHION.EU](http://WWW.BC-FASHION.EU)

AVAILABLE IN 11 STYLES FOR MEN, WOMEN AND KID: HOODIES, CREW-NECKS, FULL-ZIP... STYLES

# THE B&C ID. LINE

## EVERYDAY SWEATSHIRTS



WHEN  
**EFFICIENCY**  
IS EVERYTHING

**80%**  
COTTON

**20%**  
POLYESTER

**COTTON RICH BRINGS  
HIGH COMFORT  
TO THE WEARER**

-  
The  
most  
affordable  
cotton rich  
sweatshirts  
on the  
market  
-



AVAILABLE IN UNISEX HOODIE, CREW-NECK AND ¾ ZIPPED STYLES

WHEN  
**THE MESSAGE**  
IS EVERYTHING

**50%**  
COTTON

**50%**  
POLYESTER

**FIFTY - FIFTY: MINIMAL STYLE  
MINI PRICE BUT  
MAXIMUM MESSAGE**

-  
This B&C  
50/50  
sweatshirts line  
fits all your  
projects when  
the MESSAGE  
is everything.  
-



AVAILABLE IN UNISEX HOODIE, CREW-NECK, FULL ZIP AND HOODED FULL ZIP STYLES

**WU620****Hooded Sweatshirt****Weight:** 280g/m<sup>2</sup>**Fabric:** 80% combed Cotton, 20% Polyester

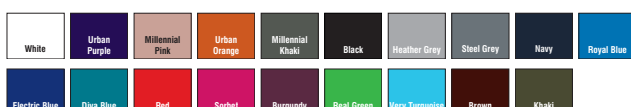
- Hooded sweatshirt
- Perfect sweat technology - high quality fabric for perfect printability, comfort & durability
- Low shrinkage, brushed fleece inside

<b>XXS</b>	36	58
<b>XS</b>	39	63
<b>S</b>	42	65.5
<b>M</b>	44	67.5
<b>L</b>	47	69.5
<b>XL</b>	50	71.5
<b>2XL</b>	53	73.5
<b>3XL</b>	56	75.5

**WUI21****ID.003 Cotton Rich Hooded Sweatshirt****Weight:** 280g/m<sup>2</sup>**Fabric:** 80% Cotton, 20% Polyester

- Lined hooded sweatshirt with drawstring
- Cuffs and bottom hem in 1 x 1 rib with Elastane
- Front kangaroo pocket with reinforced seams

<b>XS</b>	34-36	63.5
<b>S</b>	36-38	65.5
<b>M</b>	38-40	67.5
<b>L</b>	41-42	69.5
<b>XL</b>	43-44	71.5
<b>2XL</b>	45-47	73.5
<b>3XL</b>	47-49	75.5
<b>4XL</b>	49-51	77.5
<b>5XL</b>	51-53	79.5





## B&C 50/50 ID. SWEATSHIRTS

Your B&C 50/50 Everyday Sweatshirt combines the price of polyester with the feel of cotton. Its style is minimal, its fabric is easy to care for, less likely to shrink or wrinkle, and works well for decoration.

This, combined with the right colour and size range offer, makes it the perfect support when your message is everything.

The B&C 50/50 ID. Sweatshirts offer 4 styles: hooded, crew neck, hooded full zip and full zip tall neck in up to 12 colours and 8 sizes.

WHEN  
**THE MESSAGE**  
IS EVERYTHING



MY EVERYDAY SWEATSHIRT

BE INSPIRED - WWW.BC-FASHION.EU



### WU124

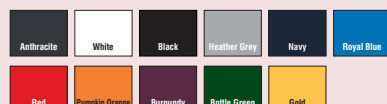
Unisex ID.203 50/50 Hooded Sweatshirt

**Weight:** 270g/m<sup>2</sup>

**Fabric:** 50% Cotton / 50% Polyester

- Hooded sweatshirt
- Unisex style
- Fleecy inside

<b>XS</b>	34-36
<b>S</b>	36-38
<b>M</b>	38-40
<b>L</b>	41-42
<b>XL</b>	43-44
<b>2XL</b>	45-47
<b>3XL</b>	49-51
<b>4XL</b>	52-54





**62208****Men's Classic Hooded Sweatshirt**

**Weight:** 280g/m<sup>2</sup> (260g/m<sup>2</sup> White & Heather Grey)  
**Fabric:** 80% Cotton, 20% Polyester

- Double fabric hood
- Self coloured flat drawcord
- Front pouch pocket

<b>S</b>	35-37
<b>M</b>	38-40
<b>L</b>	41-43
<b>XL</b>	44-46
<b>2XL</b>	47-49

White	NEW Retro Heather Green	NEW Vintage Heather Red	NEW Retro Heather Royal	NEW Vintage Heather Navy	NEW Dark Heather	Black	Heather Grey	Light Graphite
Navy	Deep Navy	Royal Blue	Azure	Sky Blue	Purple	Red	Orange	Light Pink
Fuchsia	Burgundy	Kelly Green	Classic Olive	Bottle Green	Sunflower	Chocolate		

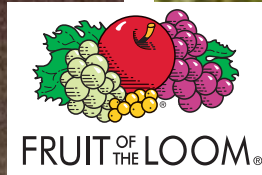
**62038****Lady-Fit Classic Hooded Sweat**

**Weight:** 280g/m<sup>2</sup> (260g/m<sup>2</sup> Heather Grey)  
**Fabric:** 80% Cotton, 20% Polyester

- Double fabric hood
- Self coloured flat drawcord
- Front pouch pocket

<b>XS</b>	8
<b>S</b>	10
<b>M</b>	12
<b>L</b>	14
<b>XL</b>	16
<b>2XL</b>	18

White	Black	Heather Grey	Navy	Deep Navy	Royal Blue	Azure	Sky Blue	Purple
Red	Light Pink	Fuchsia	Burgundy	Kelly Green	Bottle Green	Sunflower		



### 62140 Men's Lightweight Hooded Sweat

**Weight:** 240g/m<sup>2</sup>

**Fabric:** 80% Cotton, 20% Polyester

- Lightweight unbrushed fleece
- Raglan sleeves
- Hood with self coloured flat drawcord

<b>S</b>	35-37
<b>M</b>	38-40
<b>L</b>	41-43
<b>XL</b>	44-46
<b>2XL</b>	47-49



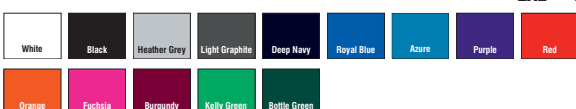
### 62148 Lady-Fit Lightweight Hooded Sweat

**Weight:** 240g/m<sup>2</sup>

**Fabric:** 80% Cotton, 20% Polyester

- Lightweight unbrushed fleece
- Raglan sleeves
- Hood with self-coloured flat drawcord

<b>XS</b>	8
<b>S</b>	10
<b>M</b>	12
<b>L</b>	14
<b>XL</b>	16
<b>2XL</b>	18



### 62152 Men's Premium Hooded Sweat

**Weight:** 280g/m<sup>2</sup> (260g/m<sup>2</sup> Heather Grey)

**Fabric:** 70% Cotton, 30% Polyester

- Double fabric hood
- Self-coloured flat drawcord
- Single jersey back neck tape

<b>S</b>	35-37
<b>M</b>	38-40
<b>L</b>	41-43
<b>XL</b>	44-46
<b>2XL</b>	47-49







Be Fundamental

**FDM**

Hoodies, Jackets and Jog Pants

[fdmcorporate.com](http://fdmcorporate.com)



**TH002****Tagless Media Hoodie****Weight:** 300g/m<sup>2</sup>**Fabric:** 60% Cotton, 40% Polyester

- Unisex style
- Set-in sleeve
- Twin needle stitching

<b>XS</b>	36
<b>S</b>	38
<b>M</b>	40
<b>L</b>	42-44
<b>XL</b>	46
<b>2XL</b>	48-50
<b>3XL</b>	52

**FH001****'Cambridge' Unisex Original Hoodie****Weight:** 300g/m<sup>2</sup>**Fabric:** 80% Cotton, 20% Polyester

- Unisex style
- Front pouch pocket
- Set-in sleeve

<b>XS</b>	36
<b>S</b>	38
<b>M</b>	40
<b>L</b>	42-44
<b>XL</b>	46
<b>2XL</b>	48-50
<b>3XL</b>	52-54

**TH001****'Yale' Unisex Tagless Hoodie****Weight:** 280g/m<sup>2</sup>**Fabric:** 50% Cotton, 50% Polyester

- Unisex style
- Front pouch pocket
- Set-in sleeve

<b>XS</b>	36
<b>S</b>	38
<b>M</b>	40
<b>L</b>	42-44
<b>XL</b>	46
<b>2XL</b>	48-50
<b>3XL</b>	52-54

**FH003****'Durham' Ladies' Raglan Hoodie****Weight:** 300g/m<sup>2</sup>**Fabric:** 80% Cotton, 20% Polyester

- Slim fit style
- Front pouch pocket
- Raglan sleeve

<b>XS</b>	8-10	35
<b>S</b>	10-12	37
<b>M</b>	12-14	39
<b>L</b>	14-16	41
<b>XL</b>	16-18	43

NEW  
STYLE

NEW  
STYLE**TJ5601**

## Ladies' Performance Hoodie

**Weight:** 270g/m<sup>2</sup>**Fabric:** 100% Polyester

- Fashion fit
- Adjustable hood
- Large front pocket



<b>S</b>	46.5
<b>M</b>	49
<b>L</b>	51.5
<b>XL</b>	54
<b>2XL</b>	56.5

**TJ5600**

## Men's Performance Hoodie

**Weight:** 270g/m<sup>2</sup>**Fabric:** 100% Polyester

- fashion fit
- Adjustable hood
- Large front pocket



<b>S</b>	52
<b>M</b>	55
<b>L</b>	58
<b>XL</b>	61
<b>2XL</b>	63





**TEE JAYS®**

### TJ5432 Men's Two-Tone Hooded Sweatshirt

**Weight:** 310-320g/m<sup>2</sup>

**Fabric:** 70% Cotton, 30% Polyester

- Quality ribs with Lycra
- Large front pocket
- Brushed inside



<b>S</b>	54
<b>M</b>	58
<b>L</b>	62
<b>XL</b>	65
<b>2XL</b>	68
<b>3XL</b>	71



### TJ5433 Ladies Two-Tone Hooded Sweatshirt

**Weight:** 310-320g/m<sup>2</sup>

**Fabric:** 70% Cotton, 30% Polyester

- Quality ribs with Lycra
- Large front pocket
- Brushed inside



<b>S</b>	48
<b>M</b>	50
<b>L</b>	52
<b>XL</b>	54
<b>2XL</b>	56



### TJ5430 Men's Hooded Sweatshirt

**Weight:** 310g/m<sup>2</sup>

**Fabric:** 70% Ringspun Cotton, 30% Polyester

- Lycra in all ribs for better stability
- Double stitched
- Long fibre Egyptian Cotton



<b>S</b>	54
<b>M</b>	58
<b>L</b>	62
<b>XL</b>	65
<b>2XL</b>	68
<b>3XL</b>	71



# EXPECT MORE

RETRO LOOK FOR  
A MODERN APPEARANCE

269M Authentic Hooded Baseball Sweat

264M Authentic Baseball Sweat



For more information, please visit  
[RUSSELLEUROPE.COM](http://RUSSELLEUROPE.COM)



### R261F Ladies' Authentic Melange Hooded Sweat

**Weight:** 280g/m<sup>2</sup>

**Fabric:** 75% Combed Ring Spun Cotton; 21% Polyester 4% Viscose\*

- Modern feminine tailored fit
- Outer 100% cotton layer provides the best surface for decoration
- Half moon neck insert(locker patch) for individualization

<b>XS</b>	8
<b>S</b>	10
<b>M</b>	12
<b>L</b>	14
<b>XL</b>	16



### R261M Men's Authentic Melange Hooded Sweat

**Weight:** 280g/m<sup>2</sup>

**Fabric:** 75% Combed Ring Spun Cotton; 21% Polyester 4% Viscose\*

- Straighter cut for a modern look
- Outer 100% cotton layer provides the best surface for decoration
- Half moon neck insert(locker patch) for individualization

<b>XS</b>	34-36
<b>S</b>	36-38
<b>M</b>	38-40
<b>L</b>	40-42
<b>XL</b>	42-44
<b>2XL</b>	44-46
<b>3XL</b>	46-48



### R281F Ladies' HD Hooded Sweat

**Weight:** 255g/m<sup>2</sup> (250g/m<sup>2</sup> White)

**Fabric:** 65% Polyester, 35% ring spun combed Cotton

- Contemporary slim fit
- Contrast neck tape with stitch detail
- Cover seam waistband and cuffs

<b>XS</b>	30-32
<b>S</b>	32-34
<b>M</b>	34-36
<b>L</b>	36-38
<b>XL</b>	38-40
<b>2XL</b>	40-42



<b>XS</b>	34-36
<b>S</b>	36-38
<b>M</b>	38-40
<b>L</b>	40-42
<b>XL</b>	42-44
<b>2XL</b>	44-46
<b>3XL</b>	46-48

### R281M Men's HD Hooded Sweat

**Weight:** 255g/m<sup>2</sup> (250g/m<sup>2</sup> White)

**Fabric:** 65% Polyester, 35% ring spun combed Cotton

- Contemporary slim fit
- Contrast neck tape with stitch detail
- Cover seam waistband and cuffs





### R264M Authentic Baseball Sweat

**Weight:** 280g/m<sup>2</sup>

**Fabric:** 75% Combed Ring Spun Cotton, 21% Polyester 4% Viscose

- Straighter cut for a modern look
- Contrasting raglan sleeves for a fashionable look
- Outer 100% cotton layer provides the best surface for decoration

<b>XS</b>	34-36
<b>S</b>	36-38
<b>M</b>	38-40
<b>L</b>	40-42
<b>XL</b>	42-44
<b>2XL</b>	44-46
<b>3XL</b>	46-48



### 575M Adult Hooded Sweatshirt

**Weight:** 295g/m<sup>2</sup>

**Fabric:** 50% combed ring spun Cotton, 50% Polyester

- The next generation of an old favourite
- The 575 Hoodie has been given a major overhaul in cut, design features and colour palette
- Straighter cut for a modern look

<b>XS</b>	34-36
<b>S</b>	36-38
<b>M</b>	38-40
<b>L</b>	40-42
<b>XL</b>	42-44
<b>2XL</b>	44-46



### 265M Men's Authentic Hooded Sweat

**Weight:** 280g/m<sup>2</sup>

**Fabric:** 80% combed ring spun Cotton, 20% Polyester

- Our premium Authentic Hooded Sweat with its contemporary fit and modern design revive the original spirit of the Sweatshirt
- The outer layer of the 3-layer "Authentic Sweatshirt" fabric consists of 100% cotton, providing a high quality surface for decoration
- Straighter cut for a modern look

<b>XS</b>	34-36
<b>S</b>	36-38
<b>M</b>	38-40
<b>L</b>	40-42
<b>XL</b>	42-44
<b>2XL</b>	44-46
<b>3XL</b>	46-48
<b>4XL</b>	48-50



### 265F Ladies' Authentic Hooded Sweat

**Weight:** 280g/m<sup>2</sup>

**Fabric:** 80% combed ring spun Cotton, 20% Polyester (3 layer fabric)

- Our premium Authentic Hooded Sweat with its contemporary fit and modern design revive the original spirit of the Sweatshirt
- The outer layer of the 3-layer "Authentic Sweatshirt" fabric consists of 100% cotton, providing a high quality surface for decoration
- Modern tailored fit

<b>XS</b>	30-32
<b>S</b>	32-34
<b>M</b>	34-36
<b>L</b>	36-38
<b>XL</b>	38-40







# nakedshirt®

HOODS



## MATHEO

### Men's 'Mathéo' Hooded Sweat

**Weight:** 280g/m²

**Fabric:** 80% Cotton combed, 20% Polyester

- French Terry
- Layered hood with drawcord
- Side pockets with rib knit flap

<b>S</b>	47
<b>M</b>	50
<b>L</b>	52
<b>XL</b>	54
<b>2XL</b>	56
<b>3XL</b>	60



## LUNA

### Women's 'Luna' Hooded Sweat

**Weight:** 280g/m²

**Fabric:** 80% Cotton combed, 20% Polyester

- French Terry
- Layered hood with drawcord
- Side pockets with rib knit flap

<b>XS</b>	46
<b>S</b>	48
<b>M</b>	50
<b>L</b>	52
<b>XL</b>	54
<b>2XL</b>	59





### CC1535

#### Adult French Terry Scuba Hoodie

**Weight:** 237g/m<sup>2</sup>

**Fabric:** 100% ring spun Cotton

- Soft-washed garment-dyed fabric
- Scuba hood with colour-matched flatcord
- 1x1 rib on cuffs

<b>S</b>	34-36
<b>M</b>	38-40
<b>L</b>	42-44
<b>XL</b>	46-48
<b>2XL</b>	50-52
<b>3XL</b>	54



### 185C00

#### Heavy Blend™ Adult Contrast Hooded Sweatshirt

**Weight:** 271g/m<sup>2</sup>

**Fabric:** 50% Cotton, 50% Polyester

- Air jet yarn= softer feel and reduced pilling
- Contrast jersey lined hood
- TearAway label

<b>S</b>	34-36
<b>M</b>	38-40
<b>L</b>	42-44
<b>XL</b>	46-48
<b>2XL</b>	50-52



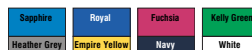
### FH002

#### 'Oxford' Unisex Contrast Hoodie

**Weight:** 300g/m<sup>2</sup>

**Fabric:** 80% Cotton, 20% Polyester

- Unisex style
- Front pouch pocket
- Set-in sleeve
- Twin needle stitching



<b>XS</b>	36
<b>S</b>	38
<b>M</b>	40
<b>L</b>	42-44
<b>XL</b>	46
<b>2XL</b>	48-50



sg

**SG24****Men's Contrast Hoodie****Weight:** 280g/m<sup>2</sup>**Fabric:** 80% combed ring-spun Cotton, 20% Polyester

- Contrast hood lining in mesh
- Contrast neck tape in herringbone - to match hood lining
- Contrast earphone loops in herringbone - to match hood lining

<b>S</b>	38-40
<b>M</b>	42-44
<b>L</b>	44-46
<b>XL</b>	46-48
<b>2XL</b>	48-50
<b>3XL</b>	50-52
<b>4XL</b>	52-54
<b>5XL</b>	54-56

**SG24F****Ladies' Contrast Hoodie****Weight:** 280g/m<sup>2</sup>**Fabric:** 80% combed ring-spun Cotton, 20% Polyester

- Contrast hood lining in mesh
- Contrast neck tape in herringbone - to match hood lining
- Contrast earphone loops in herringbone - to match hood lining

<b>XS</b>	30-32
<b>S</b>	32-34
<b>M</b>	34-36
<b>L</b>	36-38
<b>XL</b>	38-40
<b>2XL</b>	40-44

White	Light Oxford	Grey	Black	Navy	Turquoise
Navy	Navy	Black	Grey	Light Oxford	Navy
Royal	Purple	Dark Pink	Red	Lime	Bottle
Light Oxford	Light Oxford	Navy	White	White	Light Oxford

White	Black	Light Oxford	Grey	Navy	Turquoise
Navy	Grey	Navy	Black	Light Oxford	Navy
Royal	Purple	Dark Pink	Red	Lime	Bottle
Light Oxford	Light Oxford	Navy	White	White	Light Oxford

sg

M

F

**SG28****Men's Full Zip Urban Hoodie****Weight:** 320g/m<sup>2</sup>**Fabric:** 80% combed ring-spun Cotton, 20% Polyester

- Waffle fabric in hood lining, in self colour
- Contrast neck tape in herringbone
- Contrast earphone loops in herringbone - matching neck tape colour

**S** 38-40**M** 42-44**L** 44-46**XL** 46-48**2XL** 48-50**3XL** 50-52**SG28F****Ladies' Full Zip Urban Hoodie****Weight:** 320g/m<sup>2</sup>**Fabric:** 80% combed ring-spun Cotton, 20% Polyester

- Waffle fabric in hood lining, in self colour
- Contrast neck tape in herringbone
- Contrast earphone loops in herringbone - matching neck tape colour

**XS** 30-32**S** 32-34**M** 34-36**L** 36-38**XL** 38-40**2XL** 40-44

HOODS

M

F

**SG29****Men's Full Zip Hoodie****Weight:** 280g/m<sup>2</sup>**Fabric:** 80% combed ring-spun Cotton, 20% Polyester

- Side seamed
- Set-in sleeves
- Rib hem & cuff

**S** 38-40**M** 42-44**L** 44-46**XL** 46-48**2XL** 48-50**3XL** 50-52**4XL** 52-54**5XL** 54-56**SG29F****Ladies' Full Zip Hoodie****Weight:** 280g/m<sup>2</sup>**Fabric:** 80% combed ring-spun Cotton, 20% Polyester

- Side seamed
- Set-in sleeves
- Rib hem & cuff

**XS** 30-32**S** 32-34**M** 34-36**L** 36-38**XL** 38-40**2XL** 40-44



**TZ001****'Berkeley' Team Zip Hoodie****Weight:** 280g/m<sup>2</sup>**Fabric:** 50% Cotton, 50% Polyester

- Unisex style
- Full zip
- YKK metal zipper with White zip tape



<b>S</b>	38
<b>M</b>	40
<b>L</b>	42-44
<b>XL</b>	46
<b>2XL</b>	48-50
<b>3XL</b>	52-54

**62062****Men's Classic Hooded Sweat Jacket****Weight:** 280g/m<sup>2</sup> (260g/m<sup>2</sup> Heather Grey)**Fabric:** 80% Cotton, 20% Polyester

- Covered metal zip for enhanced printability
- Double fabric hood
- Self-coloured flat drawcord



<b>S</b>	35-37
<b>M</b>	38-40
<b>L</b>	41-43
<b>XL</b>	44-46
<b>2XL</b>	47-49

**62118****Lady-Fit Premium Hooded Sweat Jacket****Weight:** 280g/m<sup>2</sup> (260g/m<sup>2</sup> White & Heather Grey)**Fabric:** 70% Cotton, 30% Polyester

- Double fabric hood
- Self coloured flat drawcord
- Single jersey back neck tape



<b>XS</b>	8
<b>S</b>	10
<b>M</b>	12
<b>L</b>	14
<b>XL</b>	16
<b>2XL</b>	18



ANVIL®



### 71600FL

#### Women's Full Zip Hooded Sweatshirt

**Weight:** 245g/m<sup>2</sup>

**Fabric:** 75% combed ring spun Cotton, 25% Polyester

- Yarn count: 30/1
- Unlined hood with White drawcords
- Side seam construction

<b>S</b>	8-10
<b>M</b>	10-12
<b>L</b>	12-14
<b>XL</b>	14-16
<b>2XL</b>	16-18



### 71600

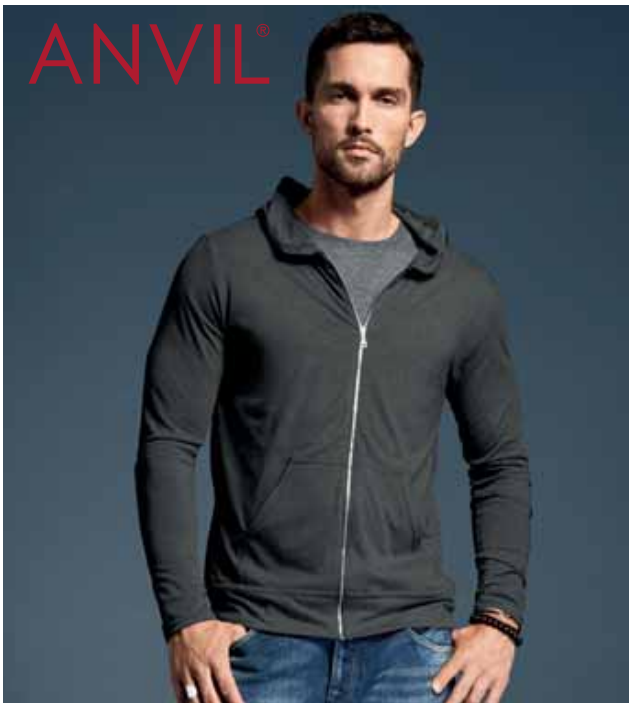
#### Adult Full Zip Hooded Sweatshirt

**Weight:** 245g/m<sup>2</sup>

**Fabric:** 75% combed ring spun Cotton, 25% Polyester

- Yarn count: 31/1
- Classic fit
- Side seam construction

<b>S</b>	34-36
<b>M</b>	38-40
<b>L</b>	42-44
<b>XL</b>	46-48
<b>2XL</b>	50-52
<b>3XL</b>	52-54



### 6759

#### Adult Tri-Blend Full Zip Hooded Jacket

**Weight:** 159g/m<sup>2</sup>

**Fabric:** 50% Polyester, 25% combed ring spun Cotton, 25% Viscose

- Yarn count: 32/1
- High stitch density for smoother printing surface
- Wicking properties

<b>S</b>	34-36
<b>M</b>	38-40
<b>L</b>	42-44
<b>XL</b>	46-48
<b>2XL</b>	50-52



KUSTOM KIT®



### KK303

#### Klassic Hooded Zipped Jacket Superwash®

**Weight:** 280g/m<sup>2</sup>

**Fabric:** 65% Polyester, 35% Cotton brushed back jersey

- Full front zip
- Self fabric lined hood
- Self coloured tape to back neck

<b>XS</b>	32-34
<b>S</b>	36-38
<b>M</b>	40
<b>L</b>	42
<b>XL</b>	44
<b>2XL</b>	46-48
<b>3XL</b>	50-52





**R284M****Men's HD Zipped Hooded Sweat****Weight:** 255g/m<sup>2</sup> (250g/m<sup>2</sup> White)**Fabric:** 65% Polyester, 35% ring spun combed Cotton

- Contemporary slim fit
- Contrast neck tape with stitch detail
- Cover seam at waistband and cuffs

<b>XS</b>	34-36
<b>S</b>	36-38
<b>M</b>	38-40
<b>L</b>	40-42
<b>XL</b>	42-44
<b>2XL</b>	44-46
<b>3XL</b>	46-48

**R284F****Ladies' HD Zipped Hooded Sweat****Weight:** 255g/m<sup>2</sup> (250g/m<sup>2</sup> White)**Fabric:** 65% Polyester, 35% ring spun combed Cotton

- Contemporary slim fit
- Contrast neck tape with stitch detail
- Cover seam at waistband and cuffs

<b>XS</b>	30-32
<b>S</b>	32-34
<b>M</b>	34-36
<b>L</b>	36-38
<b>XL</b>	38-40
<b>2XL</b>	40-42

**266M****Men's Authentic Zipped Hood****Weight:** 280g/m<sup>2</sup>**Fabric:** 80% combed ring spun Cotton, 20% Polyester

- Our premium Authentic Zipped Hood with its contemporary fit and modern design revive the original spirit of the Sweatshirt
- The outer layer of the 3-layer "Authentic Sweatshirt" fabric consists of 100% cotton, providing a high quality surface for decoration
- Straighter cut for a modern look

<b>XS</b>	34-36
<b>S</b>	36-38
<b>M</b>	38-40
<b>L</b>	40-42
<b>XL</b>	42-44
<b>2XL</b>	44-46
<b>3XL</b>	46-48
<b>4XL</b>	48-50

**266F****Ladies' Authentic Zipped Hood****Weight:** 280g/m<sup>2</sup>**Fabric:** 80% combed ring spun Cotton, 20% Polyester

- Our premium Authentic Zipped Hood with its contemporary fit and modern design revive the original spirit of the Sweatshirt
- The outer layer of the 3-layer "Authentic Sweatshirt" fabric consists of 100% cotton, providing a high quality surface for decoration
- Modern tailored fit

<b>XS</b>	30-32
<b>S</b>	32-34
<b>M</b>	34-36
<b>L</b>	36-38
<b>XL</b>	38-40



NEW  
STYLENEW  
STYLE

### R263F

#### Ladies' Authentic Melange Zipped Hood Sweat

**Weight:** 280g/m<sup>2</sup>

**Fabric:** 75% Combed Ring Spun Cotton, 21% Polyester, 4% Viscose

- Modern feminine tailored fit (263F)
- Outer 100% cotton layer provides the best surface for decoration
- Half moon neck insert(locker patch) for individualization



<b>XS</b>	8
<b>S</b>	10
<b>M</b>	12
<b>L</b>	14
<b>XL</b>	16

NEW  
STYLE

### R269M

#### Authentic Hooded Baseball Sweat

**Weight:** 280g/m<sup>2</sup>

**Fabric:** 75% Combed Ring Spun Cotton, 21% Polyester 4% Viscose

- Straighter cut for a modern look
- Contrasting raglan sleeves for a fashionable look
- Outer 100% cotton layer provides the best surface for decoration



<b>XS</b>	34-36
<b>S</b>	36-38
<b>M</b>	38-40
<b>L</b>	40-42
<b>XL</b>	42-44
<b>2XL</b>	44-46
<b>3XL</b>	46-48



### R263M

#### Men's Authentic Melange Zipped Hood Sweat

**Weight:** 280g/m<sup>2</sup>

**Fabric:** 75% Combed Ring Spun Cotton, 21% Polyester, 4% Viscose

- Straighter cut for a modern look
- Outer 100% cotton layer provides the best surface for decoration
- Half moon neck insert(locker patch) for individualization



<b>XS</b>	34-36
<b>S</b>	36-38
<b>M</b>	38-40
<b>L</b>	40-42
<b>XL</b>	42-44
<b>2XL</b>	44-46
<b>3XL</b>	46-48



GILDAN®

**18600****Heavy Blend™ Adult Full Zip Hooded Sweatshirt****Weight:** 271g/m<sup>2</sup> (257g/m<sup>2</sup> White)**Fabric:** 50% Cotton, 50% Polyester

- Air jet yarn= softer feel and reduced pilling
- Unlined hood with colour-matched drawcord
- TearAway label

<b>S</b>	34-36
<b>M</b>	38-40
<b>L</b>	42-44
<b>XL</b>	46-48
<b>2XL</b>	50-52
<b>3XL</b>	54-56
<b>4XL</b>	58-60
<b>5XL</b>	62-64

**18600FL****Heavy Blend™ Ladies' Full Zip Hooded Sweatshirt****Weight:** 271g/m<sup>2</sup> (257g/m<sup>2</sup> White)**Fabric:** 50% Cotton, 50% Polyester

- Semi-fitted contoured silhouette
- Unlined hood with colour-matched flatcord
- TearAway label

<b>S</b>	8-10
<b>M</b>	10-12
<b>L</b>	12-14
<b>XL</b>	16-18
<b>2XL</b>	18-20







**B&C**  
COLLECTION

## B&C HIGH QUALITY SWEATSHIRTS



SUMPTUOUS FABRIC  
MODERN STYLING  
UNBELIEVABLE SOFTNESS  
PERFECT PRINTABILITY

**Create garments that match all the needs of your most demanding customers.**

The exclusive B&C Perfect Sweat Technology (PST) takes the comfort, appearance and printability of the B&C sweatshirts to the highest level. With B&C PST unique fabric construction you can let your inspiration free, confident of great decoration results.

PRINT A B&C SWEATSHIRT AS YOU WOULD PRINT A 100% COTTON T-SHIRT. THANKS TO THE 100% OUTER OF B&C PST. IT IS THAT EASY!



BE INSPIRED - [WWW.BC-FASHION.EU](http://WWW.BC-FASHION.EU)

**WM647****Hooded Men's Full Zip Sweat****Weight:** 280g/m<sup>2</sup>**Fabric:** 80% ring-spun combed Cotton, 20% Polyester

- Perfect sweat technology - high quality fabric for perfect printability, comfort & durability
- Tone-on-tone covered zip with piping for overall decoration
- 3 panelled hood with internal earphone loops

<b>S</b>	38-40	71.3
<b>M</b>	41-42	71.5
<b>L</b>	43-44	71.7
<b>XL</b>	45-47	74
<b>2XL</b>	47-49	77.2
<b>3XL</b>	49-51	80.4





**WM645****Monster Men Hooded Zip****Weight:** 280g/m<sup>2</sup>**Fabric:** 80% combed Cotton, 20% Polyester

- Full zip hooded sweatshirt
- Perfect sweat technology - high quality fabric for perfect printability, comfort & durability
- Low shrinkage



<b>S</b>	36-38	65.5
<b>M</b>	38-40	67.5
<b>L</b>	41-42	69.5
<b>XL</b>	43-44	71.5
<b>2XL</b>	45-47	73.5
<b>3XL</b>	47-49	75.5

**WW641****Wonder Women Hooded Zip Sweat****Weight:** 280g/m<sup>2</sup>**Fabric:** 80% combed Cotton, 20% Polyester

- Full zip hooded sweatshirt
- Perfect sweat technology - high quality fabric for perfect printability, comfort & durability
- 2 front pockets



<b>XS</b>	32-36	63
<b>S</b>	36-38	64.5
<b>M</b>	38-40	66
<b>L</b>	41-42	67.5
<b>XL</b>	43-44	69
<b>2XL</b>	45-47	70.5

**WUI22****ID.004 Cotton Rich 1/4 Zip Sweat****Weight:** 280g/m<sup>2</sup>**Fabric:** 80% Cotton, 20% Polyester

- High collar in 1 x 1 rib with Elastane
- 2-side covered placket with a tone-on-tone zip (no skin contact with zip)
- Cuffs and bottom hem in 1 x 1 rib with Elastane



<b>S</b>	36-38	68
<b>M</b>	38-40	70
<b>L</b>	41-42	72
<b>XL</b>	43-44	74
<b>2XL</b>	45-47	76
<b>3XL</b>	47-49	78

**WUI25****Unisex ID.205 50/50 Hooded Full Zip Sweat****Weight:** 270g/m<sup>2</sup>**Fabric:** 50% Cotton, 50% Polyester

- Hooded full zip sweatshirt
- Unisex style
- Fleecy inside



<b>XS</b>	34-36	
<b>S</b>	36-38	
<b>M</b>	38-40	
<b>L</b>	41-42	
<b>XL</b>	43-44	
<b>2XL</b>	45-47	



NEW  
STYLEM  
FNEW  
STYLE

  
TEE JAYS®
**TJ5602**

## Men's Performance Zip Sweat

**Weight:** 270g/m<sup>2</sup>**Fabric:** 100% Polyester

- Shaped fit
- 2 front pockets with zipper
- SBS zippers



<b>S</b>	50
<b>M</b>	52
<b>L</b>	55
<b>XL</b>	58
<b>2XL</b>	61

**TJ5603**

## Ladies' Performance Zip Sweat

**Weight:** 270g/m<sup>2</sup>**Fabric:** 100% Polyester

- Shaped fit
- 2 front pockets with zipper
- SBS zippers



<b>S</b>	44.5
<b>M</b>	47
<b>L</b>	49.5
<b>XL</b>	52
<b>2XL</b>	54.5



**TEE JAYS®**



### TJ5402

#### Men's Urban Zip Hoodie

**Weight:** 320g/m<sup>2</sup>

**Fabric:** 100% combed ringspun Cotton\*

- Loose fashion fit
- Vintage style
- Raglan sleeves



<b>S</b>	52
<b>M</b>	55
<b>L</b>	58
<b>XL</b>	61
<b>2XL</b>	63
<b>3XL</b>	65



### TJ5403

#### Ladies' Urban Zip Hoodie

**Weight:** 320g/m<sup>2</sup>

**Fabric:** 100% combed ringspun Cotton\*

- Loose fashion fit
- Vintage style
- Raglan sleeves



<b>XS</b>	46
<b>S</b>	48
<b>M</b>	50
<b>L</b>	52
<b>XL</b>	54
<b>2XL</b>	56



**TEE JAYS®**



### TJ5435

#### Men's Fashion Full Zip Hooded Sweat

**Weight:** 310g/m<sup>2</sup>

**Fabric:** 70% ringspun Cotton, 30% Polyester

- Lycra in all ribs for better stability
- Double stitched
- Longfibre Egyptian Cotton



<b>S</b>	55
<b>M</b>	58
<b>L</b>	61
<b>XL</b>	64
<b>2XL</b>	67
<b>3XL</b>	70



### TJ5436

#### Ladies' Fashion Full Zip Hooded Sweat

**Weight:** 310g/m<sup>2</sup>

**Fabric:** 70% ringspun Cotton, 30% Polyester

- Lycra in all ribs for better stability
- Double stitched
- Longfibre Egyptian Cotton



<b>S</b>	48
<b>M</b>	50
<b>L</b>	52
<b>XL</b>	54
<b>2XL</b>	56



# BELLA+CANVAS®

LOS ANGELES

NEW  
STYLE

## BE7502

### Women's Cropped Fleece Hoodie

**Weight:** 220 g/m<sup>2</sup>

**Fabric:** 52% Airlume combed and ring-spun cotton, 48% poly fleece

- Side-seamed
- Dyed-to-match drawcord
- Raw hem

S

M

L

XL



## CA3739

### Canvas Unisex Polycotton Fleece Full-Zip Hoodie

**Weight:** 220g/m<sup>2</sup>

**Fabric:** 60% Airlume combed ring-spun Cotton, 40% Polyester fleece

- Side seamed
- Retail fit
- Unisex sizing

XS 31-34

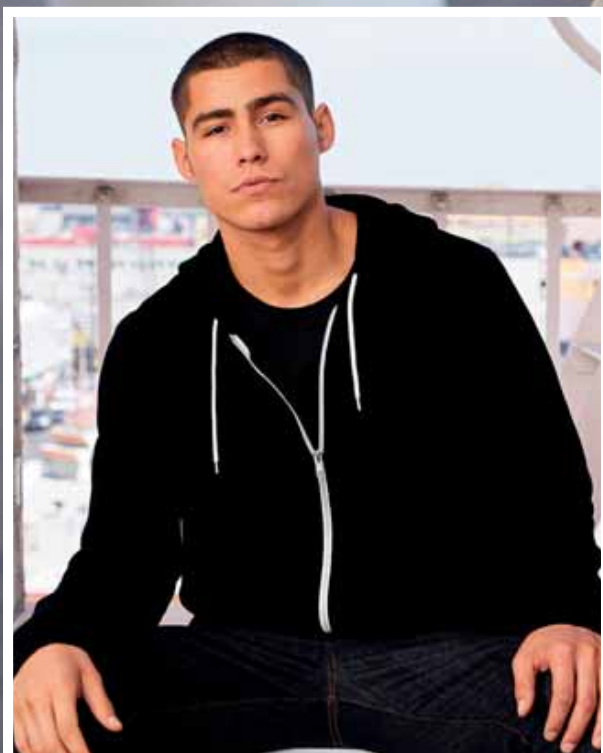
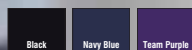
S 34-37

M 38-41

L 42-46

XL 46-49

2XL 50-53





NEW  
STYLE★ **SUPERSTAR**  
by mantisNEW  
STYLEM  
F

HOODS

**M83****Men's Superstar Zip Through Hoodie****Weight:** 330g/m<sup>2</sup>**Fabric:** 80% Cotton, 20% Polyester

- Peached outer and brushed inner for supersoft, premium feel
- Set in shoulders
- Kangaroo pockets

<b>S</b>	36-38
<b>M</b>	39-41
<b>L</b>	42-44
<b>XL</b>	45-47
<b>2XL</b>	48-50

**M84****Women's Superstar Zip Through Hoodie****Weight:** 330g/m<sup>2</sup>**Fabric:** 80% Cotton, 20% Polyester

- Peached outer and brushed inner for supersoft, premium feel
- Set in shoulders
- Kangaroo pockets

<b>S</b>	32-34	8-10
<b>M</b>	35-37	12
<b>L</b>	38-40	14
<b>XL</b>	41-43	16-18



# American Apparel®

HOODS



## F4575W

### Unisex Flex Fleece Turtleneck

**Weight:** 278g/m<sup>2</sup>

**Fabric:** 50% Combed Cotton Fleece, 50% Polyester

- Relaxed fit
- 1x1 rib cuffs, turtleneck and bottom band
- Sideseamed



<b>XS</b>	30-32
<b>S</b>	34-36
<b>M</b>	38-40
<b>L</b>	42-44
<b>XL</b>	46-48
<b>2XL</b>	50



## 5495W

### Unisex California Fleece Pullover Hoodie

**Weight:** 244g/m<sup>2</sup>

**Fabric:** 100% Cotton fleece

- Hooded with Dyed to match drawcord
- 1x1 rib cuffs and bottom band
- Raglan sleeves



<b>XS</b>	30-32
<b>S</b>	34-36
<b>M</b>	38-40
<b>L</b>	42-44
<b>XL</b>	46-48
<b>2XL</b>	50

NEW  
STYLE

American Apparel®

NEW  
STYLE



**RSAF3451W**  
Women's Flex Fleece Crop Pullover  
**Weight:** 278g/m<sup>2</sup>  
**Fabric:** 50% Combed Cotton Fleece, 50% Polyester  
• Cropped body  
• Raglan sleeves  
• 1x1 rib cuffs and bottom band



**RSAF398W**  
Women's Flex Fleece Hooded Dress  
**Weight:** 278g/m<sup>2</sup>  
**Fabric:** 50% Combed Cotton Fleece, 50% Polyester  
• Hooded with white finished polyester drawcord  
• 1x1 rib cuffs and bottom band  
• Kangaroo pocket



<b>S</b>	8-10
<b>M</b>	10-12
<b>L</b>	14



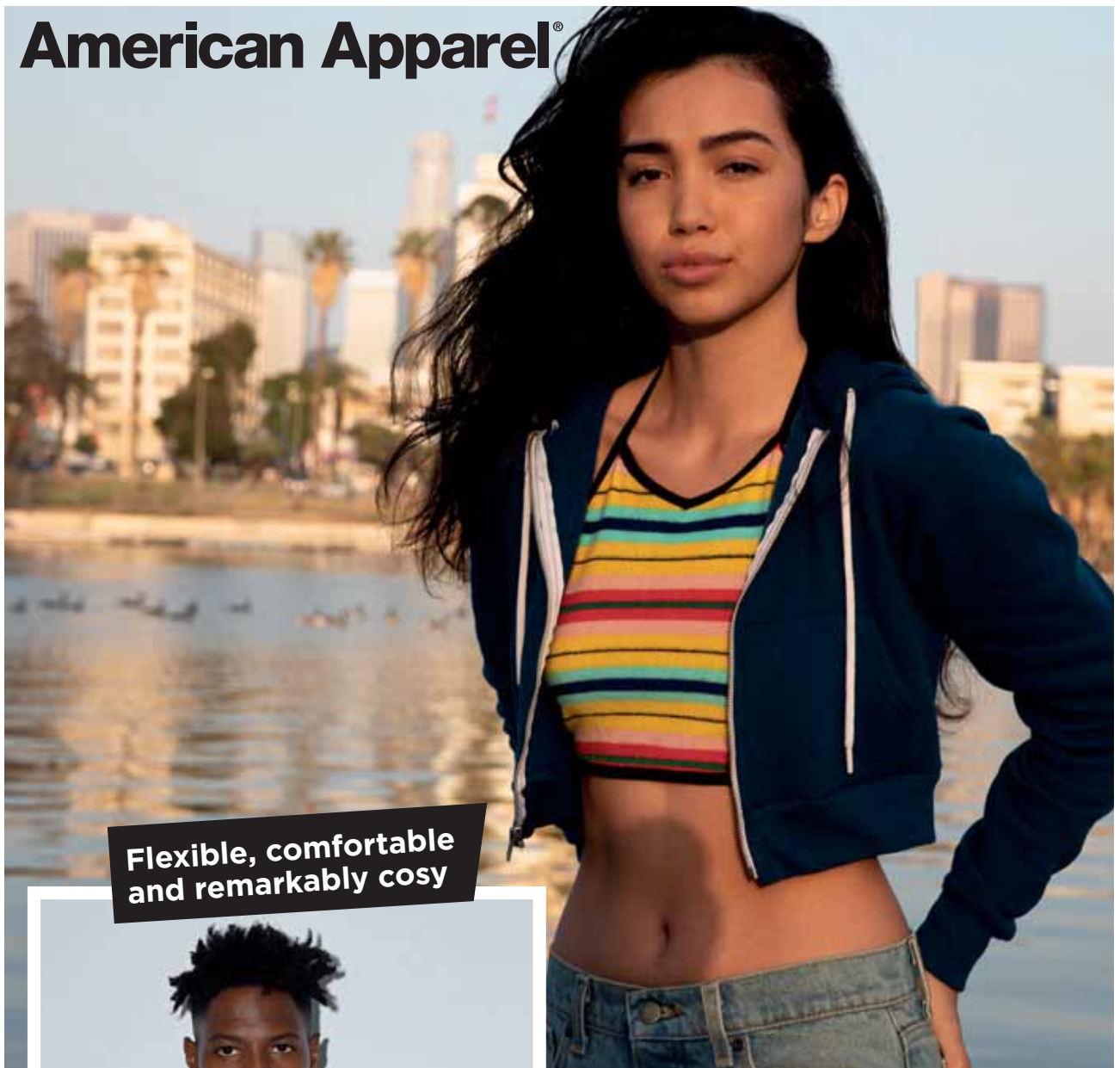
<b>S</b>	8-10
<b>M</b>	10-12
<b>L</b>	14

HOODS



# American Apparel®

Flexible, comfortable  
and remarkably cosy



## F397W

### Women's Flex Fleece Cropped Zip Hoodie

**Weight:** 278g/m<sup>2</sup>

**Fabric:** 50% combed Cotton, 50% Polyester

- Hooded with White finished polyester drawcord
- Metal zipper
- 1x1 rib cuffs and bottom band



**XS** 6-8

**S** 8-10

**M** 10-12

**L** 14

## F497W

### Unisex Flex Fleece Full Zip Hoodie

**Weight:** 278g/m<sup>2</sup>

**Fabric:** 50% Polyester, 50% Combed Cotton Fleece

- Hooded with White finished Polyester drawcord
- Metal zipper
- 1x1 rib cuffs and bottom band



**XXS** 28-30

**XS** 30-32

**S** 34-36

**M** 38-40

**L** 42-44

**XL** 46-48

**2XL** 50

# American Apparel®

HOODS

A lightweight fleece,  
breathable year-round



**5495W**  
Unisex California Fleece Pullover Hoodie  
**Weight:** 244g/m<sup>2</sup>  
**Fabric:** 100% Cotton fleece  
• Hooded with Dyed to match drawcord  
• 1x1 rib cuffs and bottom band  
• Raglan sleeves



XS	30-32
S	34-36
M	38-40
L	42-44
XL	46-48
2XL	50

**5497W**  
Unisex California Fleece Zip Up Hoodie  
**Weight:** 244g/m<sup>2</sup>  
**Fabric:** 100% Cotton fleece  
• Hooded with Dyed to match drawcord  
• Dyed to match zipper  
• 1x1 rib cuffs and bottom band



XS	30-32
S	34-36
M	38-40
L	42-44
XL	46-48
2XL	50



**MT497W****Unisex Mock Twist Full Zip Hoodie****Weight:** 285g/m<sup>2</sup>**Fabric:** 65% combed Cotton, 35% Polyester

- Hooded with White finished polyester drawcord
- Lined hood
- Metal zipper

<b>XS</b>	30-32
<b>S</b>	34-36
<b>M</b>	38-40
<b>L</b>	42-44
<b>XL</b>	46-48

**MT498W****Unisex Mock Twist Pullover Hoodie****Weight:** 285g/m<sup>2</sup>**Fabric:** 65% combed Cotton, 35% Polyester

- Relaxed fit
- Hooded with White finished polyester drawcord
- 1x1 rib cuffs and bottom band

<b>S</b>	30-32
<b>M</b>	34-36
<b>L</b>	38-40
<b>XL</b>	42-44
<b>2XL</b>	46-48





RSAMT4239W

Unisex Mock Twist Gym Short

Weight: 285g/m²

Fabric: 65% combed Cotton, 35% Polyester

- Self-fabric covered elastic waistband with dyed to match exposed drawcord
- 2.54cm leg hem
- Side pockets



S	34-36
M	38-40
L	42-44
XL	46-48



7301W

Women's Interlock Running Short

Weight: 271g/m²

Fabric: 100% ring spun combed Cotton\*

- 2.54cm Self-fabric covered elastic waistband
- 0.95cm binding finished hem and sideseams
- Double-satin razor label



XS	6-8
S	8-10
M	10-12
L	14
XL	16



1403W

Unisex Thick Knit Baseball Jersey

Weight: 475g/m²

Fabric: 60% Cotton, 40% Polyester

- Baseball inspired open neck placket
- 1.27cm sleeve hem
- Curved 1.6cm bottom hem



XS	30-32
S	34-36
M	38-40
L	42-44
XL	46-48



NEW  
STYLE
**RSATR3354W**  
 Women's Tri-Blend Running Shorts

**Weight:** 125g/m<sup>2</sup>  
**Fabric:** 50% Polyester, 25% Cotton, 25% Rayon  
 • Yarn count: 30/1  
 • 1" covered elastic waist with self-fabric exposed drawcord  
 • 1 ½ side vents



American Apparel®

NEW  
STYLE
**RSATR334W**  
 Women's Tri-Blend Leisure Pant

**Weight:** 125g/m<sup>2</sup>  
**Fabric:** 50% Polyester, 25% Cotton, 25% Rayon  
 • 1" covered elastic waist with self-fabric exposed drawcord  
 • 2 ½ rib cuffed leg openings  
 • Double-satin razor label



<b>S</b>	8-10
<b>M</b>	10-12
<b>L</b>	14
<b>XL</b>	16

NEW  
STYLE
**RSA73476W**  
 Unisex Interlock Track Jacket

**Weight:** 271g/m<sup>2</sup>  
**Fabric:** 100% Ring Spun Combed Cotton  
 • Self-fabric cuffs and bottom band  
 • Cadet collar  
 • Exposed white zipper



<b>XS</b>	30-32
<b>S</b>	34-36
<b>M</b>	38-40
<b>L</b>	42-44
<b>XL</b>	46-48

NEW  
STYLE



# American Apparel®

**RSA73477W**  
Unisex Interlock Track Pant

**Weight:** 271g/m<sup>2</sup>  
**Fabric:** 100% Ring Spun Combed Cotton

- 1 1/4" covered elastic waist with white exposed drawcord
- Single-needle topstitched side pockets
- Self-fabric 3/8 white stripe on sideseam

XS	26-28
S	30-32
M	34-36
L	36-38
XL	38-40

Black

Navy

White

White

NEW  
STYLE



**RSA54240W**  
Unisex California Fleece Slim Fit Jogger

**Weight:** 244g/m<sup>2</sup>  
**Fabric:** 100% Cotton Face Fabric

- Self-fabric covered elastic waistband with dyed to match exposed drawcord
- 1 leg hem
- Double-satin razor label

S	30-32
M	34-36
L	36-38
XL	38-40
2XL	40-42

Black

Heather Grey

NEW  
STYLE



**RSA7423W**  
Unisex Interlock Basketball Shorts

**Weight:** 271g/m<sup>2</sup>  
**Fabric:** 100% Ring Spun Combed Cotton

- 1 1/2 Self-fabric covered elastic waistband with white exposed drawcord
- 3/8 self-fabric binding finished hem and sideseams
- Right side back pocket

XS	26-28
S	30-32
M	34-36
L	36-38
XL	38-40

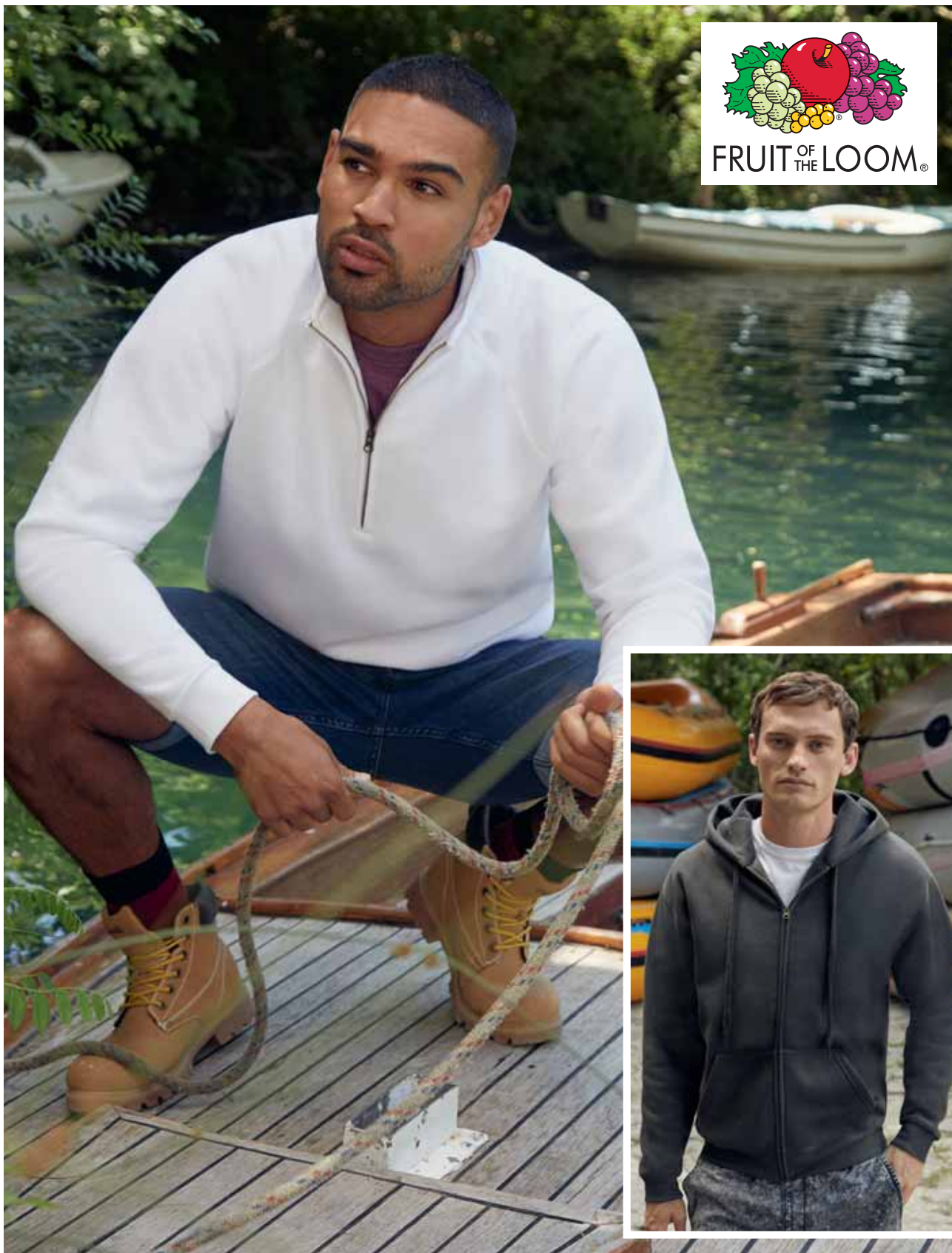
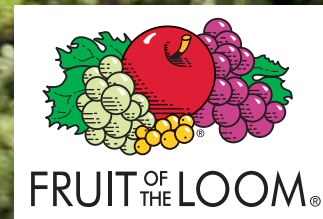
Black

Navy

White

White



**62032****Men's Premium Zip Neck Sweat****Weight:** 280g/m<sup>2</sup> (260g/m<sup>2</sup> Heather Grey)**Fabric:** 70% Cotton, 30% Polyester

- Cadet collar with single jersey back neck tape
- Covered metal zip for enhanced printability
- Waist and cuff in Cotton/Elastane rib

**S** 35-37**M** 38-40**L** 41-43**XL** 44-46**2XL** 47-49**62034****Men's Premium Hooded Sweat Jacket****Weight:** 280g/m<sup>2</sup> (260g/m<sup>2</sup> Heather Grey)**Fabric:** 70% Cotton, 30% Polyester

- Double fabric hood
- Self-coloured flat drawcord
- Single jersey back neck tape

**S** 35-37**M** 38-40**L** 41-43**XL** 44-46**2XL** 47-49



### 62228 Men's Premium Sweat Jacket

**Weight:** 280g/m<sup>2</sup> (260g/m<sup>2</sup> White & Heather Grey)

**Fabric:** 70% Cotton, 30% Polyester

- Cadet collar with single jersey back neck tape
- Covered metal zip for enhanced printability
- Two welt front pockets

<b>S</b>	35-37
<b>M</b>	38-40
<b>L</b>	41-43
<b>XL</b>	44-46
<b>2XL</b>	47-49



### 62116 Lady-Fit Premium Sweat Jacket

**Weight:** 280g/m<sup>2</sup> (260g/m<sup>2</sup> White & Heather Grey)

**Fabric:** 70% Cotton, 30% Polyester

- Cadet collar with single jersey back neck tape
- Two pouch pockets
- Covered metal zip for enhanced printability

<b>XS</b>	8
<b>S</b>	10
<b>M</b>	12
<b>L</b>	14
<b>XL</b>	16
<b>2XL</b>	18



### 62144 Men's Lightweight Hooded Raglan Sweat Jacket

**Weight:** 240g/m<sup>2</sup>

**Fabric:** 80% Cotton, 20% Polyester

- Lightweight unbrushed fleece
- Raglan sleeves
- Hood with self coloured flat drawcord

<b>S</b>	35-37
<b>M</b>	38-40
<b>L</b>	41-43
<b>XL</b>	44-46
<b>2XL</b>	47-49



### 62150 Lady-Fit Lightweight Raglan Hooded Sweat Jacket

**Weight:** 240g/m<sup>2</sup>

**Fabric:** 80% Cotton, 20% Polyester

- Lightweight unbrushed fleece
- Raglan sleeves
- Hood with self coloured flat drawcord

<b>XS</b>	8
<b>S</b>	10
<b>M</b>	12
<b>L</b>	14
<b>XL</b>	16
<b>2XL</b>	18





KUSTOM KIT®

### KK306 Knitted Fleece

**Weight:** 400g/m<sup>2</sup>

**Fabric:** 100% Polyester Knit bonded with 100% Polyester Micro Fleece

- Double layer bonded Microfleece with knitted face
- Fashion Fit
- Flat lock seaming details

<b>S</b>	36-38
<b>M</b>	40
<b>L</b>	42
<b>XL</b>	44
<b>2XL</b>	46-48



FRUIT OF THE LOOM®

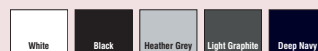
### 62230 Men's Classic Sweat Jacket

**Weight:** 280g/m<sup>2</sup> (260g/m<sup>2</sup> White & Heather Grey)

**Fabric:** 80% Cotton, 20% Polyester

- Cadet collar with single jersey back neck tape
- Covered metal zip for enhanced printability
- Two welt front pockets

<b>S</b>	35-37
<b>M</b>	38-40
<b>L</b>	41-43
<b>XL</b>	44-46
<b>2XL</b>	47-49



FRUIT OF THE LOOM®

### 62162 Lightweight Baseball Sweat Jacket

**Weight:** 240g/m<sup>2</sup>

**Fabric:** 80% Cotton, 20% Polyester

- Lightweight unbrushed fleece
- Raglan sleeves
- Neck, waist and cuff in Cotton/Lycra® rib

<b>S</b>	37-38
<b>M</b>	39-40
<b>L</b>	41-42
<b>XL</b>	43-44
<b>2XL</b>	45-46





**WUI26****Unisex ID.206 50/50 Full Zip Sweat Jacket****Weight:** 270g/m<sup>2</sup>**Fabric:** 50% Cotton / 50% Polyester

- Full zip sweat jacket
- Unisex style
- Fleecy inside

<b>XS</b>	34-36
<b>S</b>	36-38
<b>M</b>	38-40
<b>L</b>	41-42
<b>XL</b>	43-44
<b>2XL</b>	45-47

**WM646****Men's Spider Sweat Jacket****Weight:** 280g/m<sup>2</sup>**Fabric:** 80% ring-spun combed Cotton, 20% Polyester

- Perfect sweat technology - high quality fabric for perfect printability, comfort & durability
- Full length metal zip
- High collar

<b>S</b>	36-38	68
<b>M</b>	38-40	70
<b>L</b>	41-42	72
<b>XL</b>	43-44	74
<b>2XL</b>	45-47	76
<b>3XL</b>	47-49	78



FDM

HOODS

**FZ002****'Manchester' Active Zip Hoodie****Weight:** 300g/m<sup>2</sup>**Fabric:** 80% Cotton, 20% Polyester

- Unisex style
- Full zip
- YKK metal zipper with contrast colour zip tape

<b>XS</b>	36
<b>S</b>	38
<b>M</b>	40
<b>L</b>	42-44
<b>XL</b>	46
<b>2XL</b>	48-50
<b>3XL</b>	52-54

Black	Charcoal	Navy	Royal	Red
Charcoal	Black	White	White	White

**FV001****'Princeton' Unisex Varsity Jacket****Weight:** 300g/m<sup>2</sup>**Fabric:** 80% Cotton, 20% Polyester

- Unisex style
- Contrast sleeves
- Contrast press studs

<b>XS</b>	36
<b>S</b>	38
<b>M</b>	40
<b>L</b>	42-44
<b>XL</b>	46
<b>2XL</b>	48-50
<b>3XL</b>	52-54

Black	Heather Grey	Black	Heather Grey	Navy	Navy	Purple	Royal	Fire Red
White	White	Charcoal	Charcoal	Heather Grey	White	White	White	White
Burgundy	Fire Red	Bubblegum	Kelly Green	Heather Grey	Black	White	White	

**FV003****'West Point' Campus Jacket****Weight:** 300g/m<sup>2</sup>**Fabric:** 80% Cotton, 20% Polyester

- Unisex style
- Body colour matching sleeves
- Contrast press studs

<b>XS</b>	36
<b>S</b>	38
<b>M</b>	40
<b>L</b>	42-44
<b>XL</b>	46
<b>2XL</b>	48-50

Black	Charcoal	Navy	Royal	Red
Charcoal	Black	White	White	White

**62114****Men's Classic Zip Neck Sweat**

**Weight:** 280g/m<sup>2</sup> (260g/m<sup>2</sup> White & Heather Grey)

**Fabric:** 80% Cotton, 20% Polyester

- Cadet collar with single jersey back neck tape
- Covered metal zip for enhanced printability
- Waist and cuff in Cotton/ Lycra® rib



<b>S</b>	35-37
<b>M</b>	38-40
<b>L</b>	41-43
<b>XL</b>	44-46
<b>2XL</b>	47-49

**18800****Heavy Blend™ Adult Vintage Cadet Collar Sweatshirt**

**Weight:** 271g/m<sup>2</sup>

**Fabric:** 50% Cotton, 50% Polyester

- Air jet yarn = Softer feel and reduced pilling
- Cross dyed shades (2 colours in one fabric)
- Self fabric lined collar



<b>S</b>	34-36
<b>M</b>	38-40
<b>L</b>	42-44
<b>XL</b>	46-48
<b>2XL</b>	50-52
<b>3XL</b>	54-56

**R282M****Men's HD Quarter Zip Sweat**

**Weight:** 255g/m<sup>2</sup> (250g/m<sup>2</sup> White)

**Fabric:** 65% Polyester, 35% ring spun combed Cotton

- Contemporary slim fit
- Contrast neck tape with stitch detail
- Cover seam waistband and cuffs



<b>XS</b>	34-36
<b>S</b>	36-38
<b>M</b>	38-40
<b>L</b>	40-42
<b>XL</b>	42-44
<b>2XL</b>	44-46
<b>3XL</b>	46-48