

User Manual



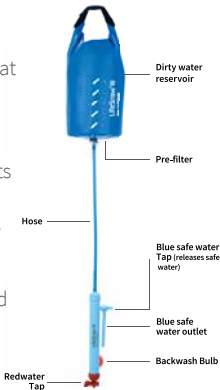
LifeStraw[®] 

Mission | by VESTERGAARD

Product set-up

LifeStraw® Family uses ultrafiltration hollow fiber technology

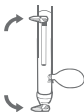
This is a highly efficient method of purification that requires no chemicals. Water is forced through narrow fibers under low pressure. Clean water exits through tiny pores in the walls of the hollow fibers, but bacteria, viruses, protozoa, and other contaminants are trapped inside the hollow fibers and are flushed out by backwashing.



NOTE: Water from the red dirty water valve should never be consumed.

Daily cleaning

Note: Water expelled during backwashing is contaminated and should not come into contact with drinking vessels or cutlery.



Step 1: Ensure there is water in the dirty water bag. Close BOTH the blue clean water valve the red dirty water valve (horizontal).



Step 2: Squeeze the red bulb and release until it fills up with water – repeat three (3) times.



Step 3: Open the red dirty water valve (vertical) and dispose the dirty water away from where it could come into contact with drinking vessels, cutlery, or other human contact.



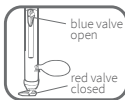
Step 4: Clean dirt off of prefilter using a soft cloth – do not use soap.

Daily use

Step 1: Fill dirty water reservoir with cleanest water available – fold top to close seal and clip around a sturdy tree branch.



Step 2: Connect the hose to the dirty water bag and allow a few minutes for clean water to start flowing from the blue clean water outlet. Ensure that the red dirty water valve is in closed position (horizontal) and the blue clean water valve is in open position (vertical).



Helpful Hint: If water is not flowing or the flow rate is slow then close the blue clean water valve, open the red dirty water valve for three (3) seconds and squeeze the red backwash bulb once.



Warning: biological hazard

There are hazards associated with backcountry travel and the use of water purifiers. Drinking untreated water may expose you to harmful microorganisms and increase your risk of gastrointestinal illness. Using this purifier improperly increases your risk of exposure to harmful microorganisms and increases your risk of gastrointestinal illness. Reduce your chances of becoming sick by following the warnings and instructions in this manual and educating yourself on backcountry water safety.

Never use LifeStraw® Mission to purify seawater or chemically contaminated water, such as from mining tailing ponds or near agricultural operations. LifeStraw® Mission does not purify water containing chemicals, radioactive materials, or particles smaller than 0.02 microns.

Read, understand, and follow all instructions and warnings in this manual before using this purifier. Failure to follow warnings and instructions may result in gastrointestinal illness.

Preparation for long term storage

Maintaining proper functioning and preventing the growth of bacteria in the LifeStraw® Mission during storage is easy to do with a simple disinfection procedure.

1. Rinse the dirty water bag with clean water.
2. Fill the dirty water bag with a solution of two (2) drops of household bleach to one (1) liter of warm water.
3. Close the blue clean water valve and open the red dirty water valve – let the water flow through the red dirty water valve into the sink until the unit is empty.
4. Air dry the dirty water bag and place entire unit in storage.