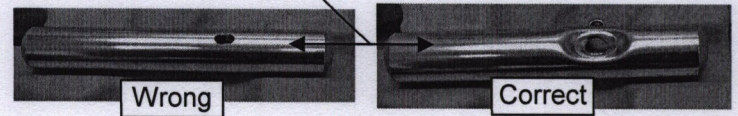
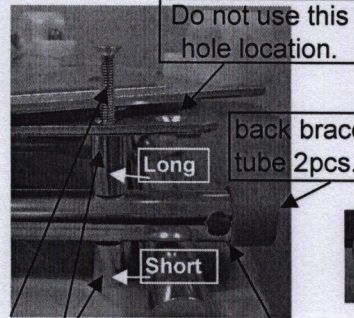
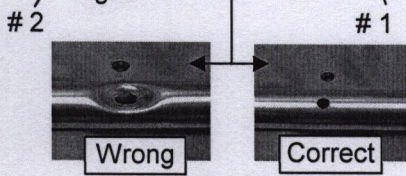
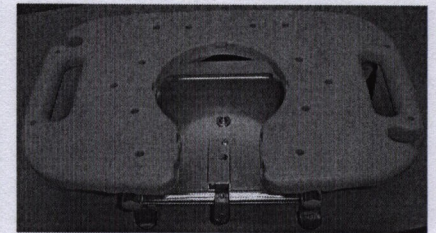
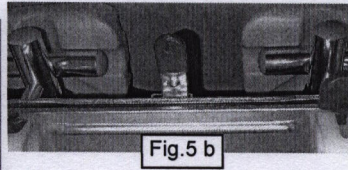
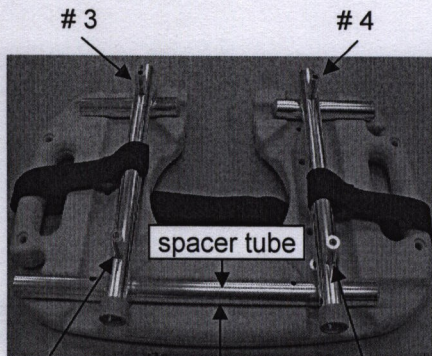
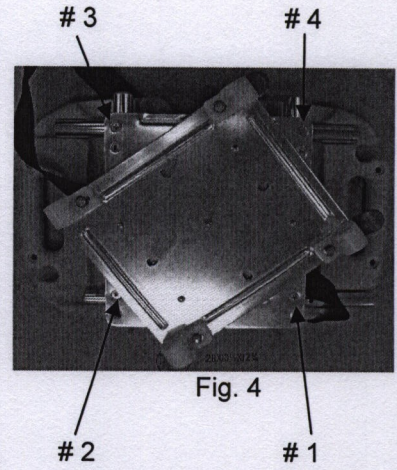
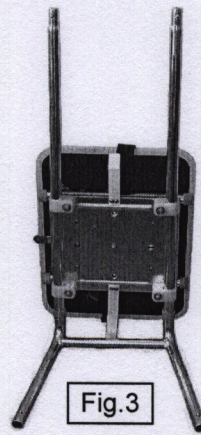
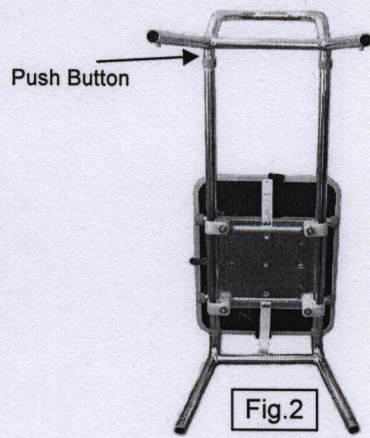
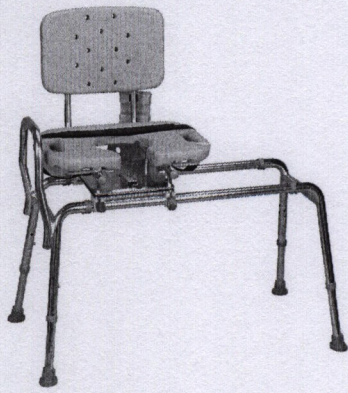


# 37663 Reversing the Swivel Plate



# 1 Fig. 6 Two Spacer Bushing Backrest tube holes

1. Take out the back rest by pushing the button under the seat and pull out the back braces.
2. Lay the bench vertically like Fig. ( 2 )
3. Take out the side handle bar ( or , side bar ) either one is fine by pushing the push button on the sliding rails and pulling the side bar out. See. Fig. # 3
4. Slide out the seat and lay it vertical on the table. Turn the swivel plate to 45 degree angle as Fig: 4
5. Unscrew all the # 1, 2, 3, 4 screws, remove the swivel plate and it will look like Fig. 5. Turn the swivel plate back to front so that the Red Tab will be at the cut-out side. See Fig.5b.
6. Turn the swivel plate 45' angle, insert the screw #1 through the swivel plat (2nd hole), 2 spacer bushing (short @ bottom, long on top), back brace tube and screw into the seat nut. See Fig. 6. Screw down lightly, to hold in place. Do not tighten completely. Note: The long spacer tube on Fig.5 has to be in correct position. See Fig. 5a. Also the Backrest Holes on back brace tube have to be facing outward on both tubes. See Fig. 6
7. Insert the screw # 3 through the swivel plat, 1 spacer bushing, short spacer tube (See Fig.7a) and screw into the seat nut. Screw down lightly to hold in place. Do not tighten completely. See Fig. 7
8. Repeat the screws # 2 & 4 as step # 6 & # 7 above. Tighten all the 4 screws. Fig. 8
9. Re install the swivel seat set as reverse direction of above step 1, 2, 3 and 4.

**Do not unscrew any other bolts than the above 4 screws or remove any other parts. Never unscrews the center bolt.** Make sure the Push Buttons pop out when putting back together. Spray with WD-40 in between two swivel plates, swivel lock and apply on sliding rails occasionally will keep the bench optimal performance.