

## Parts Reference - Bariatric Shower Chair (Item #72621)



72621



Part A



Part B & Part C



Part D



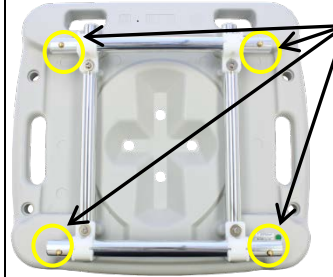
Part E



Part F

## Assembly Instructions

1. Lay the seat (Part A) facing upside-down. Take the two tubes (Part D), and insert into the white plastic rings by pressing in the brass pin while inserting the tubes through the

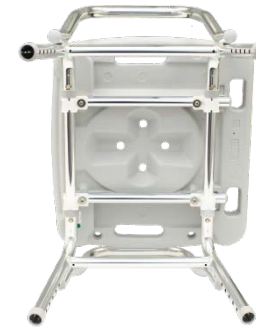


The brass pins should be on the outside of each ring and should face away from seat.

2. Take one leg frame (Part B or Part C, it does not matter which), and lay it flat on the ground. Take the seat with the two tubes located under the seat, and insert the two tubes into the leg frame. Make sure the brass buttons snap firmly into the leg frame.



3. Take the other leg frame (Part B or Part C), and insert the seat tube-ends on the opposite side of the seat into the leg frame. Make sure the brass buttons snap firmly into the leg frame.

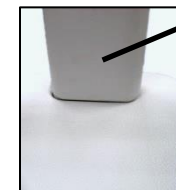


4. Take the 4 legs (Part E), and insert them into the bottom of the leg frames. Set the chair height by using the same button-hole location for each leg. Make sure the brass buttons snap firmly into the leg frame. For your safety, adjust



the rubber tips on the legs by turning them so they make maximum floor contact.

5. Take the backrest (Part F), and insert it into the two oblong backrest holes located on top of the seat towards the back side of the seat. Push the backrest down into the backrest holes, snapping it firmly into place.



## Tips for Care and Use

### Rubber Tips

Be sure the rubber tips are turned outward for maximum floor contact and stability.

### Cleaning

Rinse off the seat area with water after each use to prevent dirt, soap scum, and mineral deposits from forming which could block the push button areas.

If any push button does not completely snap into place, or if you feel the chair is not secure, please do not use the chair, and notify your authorized dealer immediately.

*This seat has a 500lbs weight limitation.*

*Have Questions? Please contact your authorized dealer for assistance.*

Thank you for purchasing an Eagle Health Supplies product!

*If you would like to register your product for the 1-year warranty, please fill out the included Warranty Card, and return to Eagle Health Supplies.*



**EAGLE HEALTH SUPPLIES INC.**  
[www.eaglehealth.com](http://www.eaglehealth.com)

# Instruction Pamphlet

**For Bariatric Shower Chair**

**72621**

Email: [sales@eaglehealth.com](mailto:sales@eaglehealth.com)

Phone: (714) 532 - 1777

Fax: (714) 532 - 9777