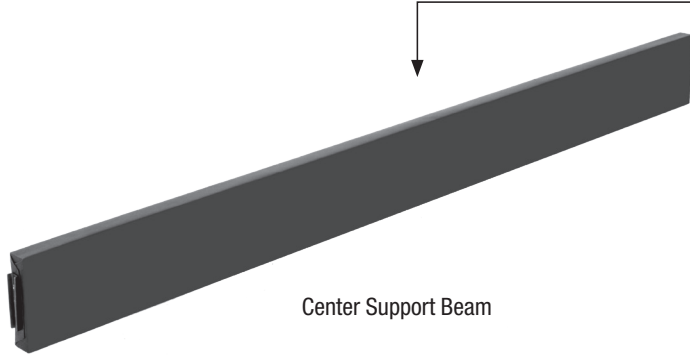


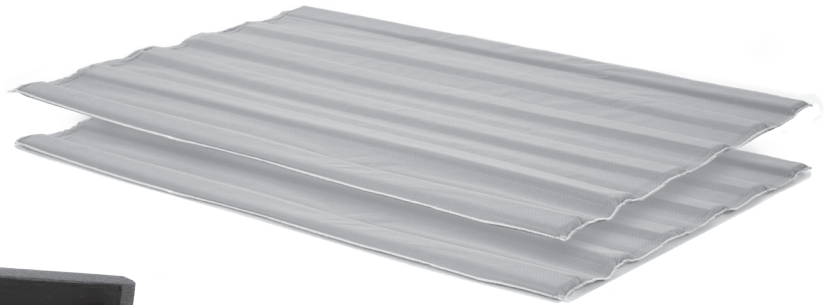
# Ready-to-Assemble Foundation

## Parts List



Center Support Beam

| Center Support Beam |          |
|---------------------|----------|
| Bed Size            | Quantity |
| Twin                | 0        |
| Twin XL             | 0        |
| Full                | 1        |
| Queen               | 1        |
| King                | 2        |
| Cal King            | 2        |



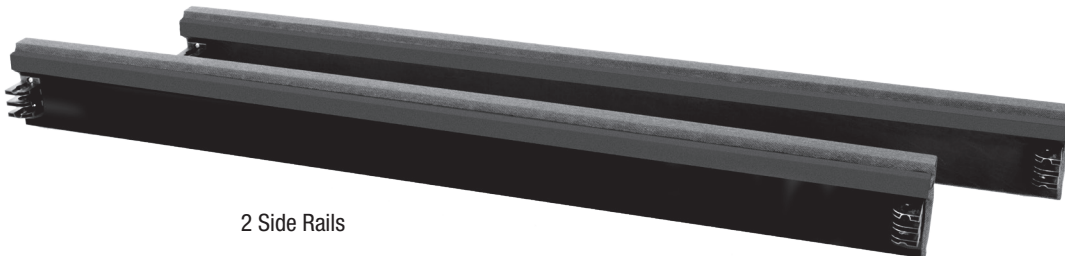
2 Fabric-Encased Slats



2 End Rails



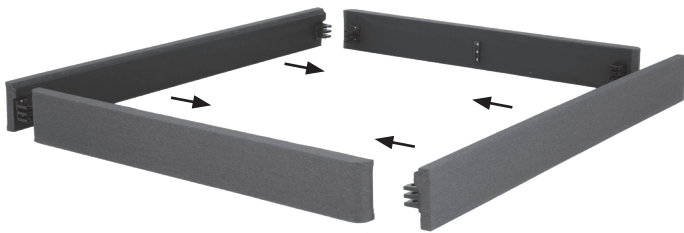
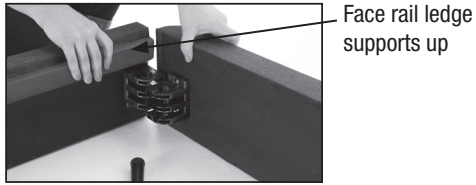
4 Pegs



2 Side Rails

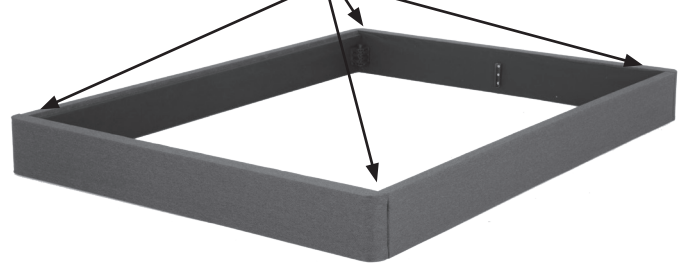
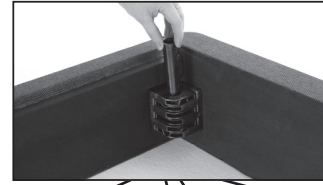
# Assembly Instructions

1



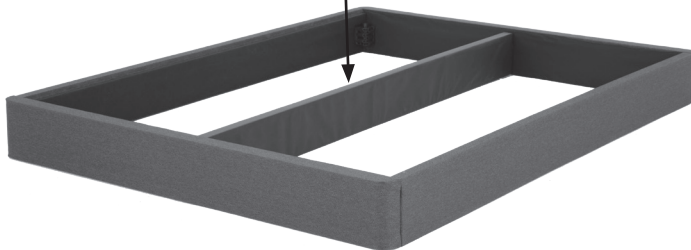
Assemble side rails

2



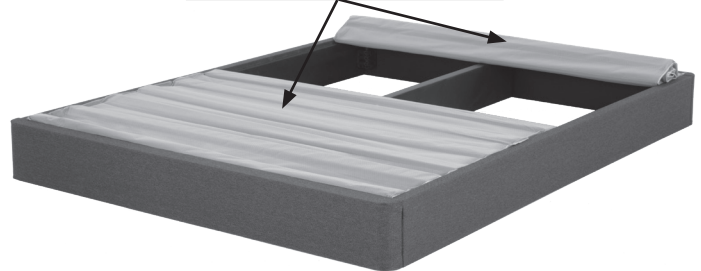
Insert the locking pegs in all four corners

3

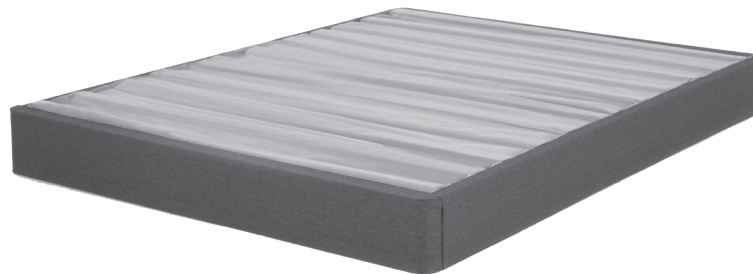


Place the center support into locking channels

4



Place and unroll the two fabric-covered slat sections



The foundation may be placed on a bed frame or used on the floor as a platform