

## LED

## LINEAR STRIP LIGHT

### Features

- ◆ AC120-277/347V, Ra>80
- ◆ High efficacy 130lm/w
- ◆ 2FT 4FT 8FT optional
- ◆ Emergency backup and sensor optional
- ◆ Easy installation,suspending mounting & surface mounted



### Application

- ◆ Industrial
- ◆ Warehouse
- ◆ Garages
- ◆ Workshops
- ◆ Commercial



## SPECIFICATION FEATURES



selectable by DIP switch on Driver



3 CCT  
(3500K/4000K/5000K) Selectable  
for CCT Tunable model only



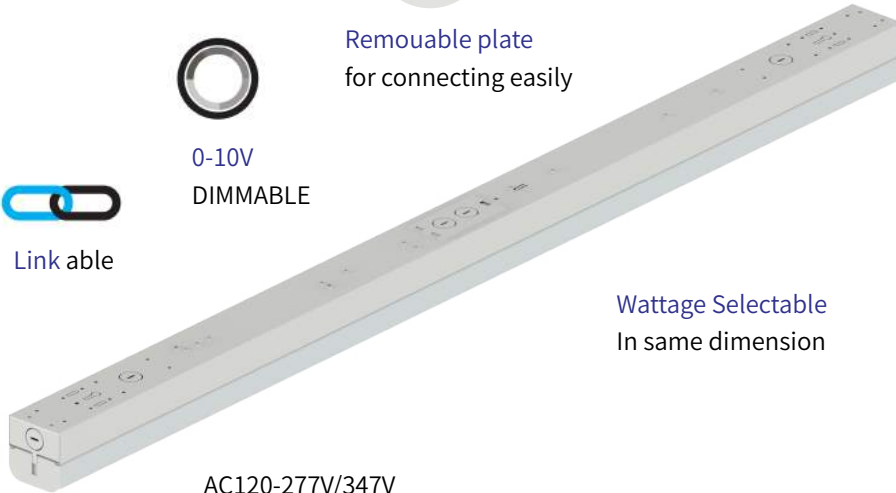
Removable plate  
for connecting easily



0-10V  
DIMMABLE



Link able



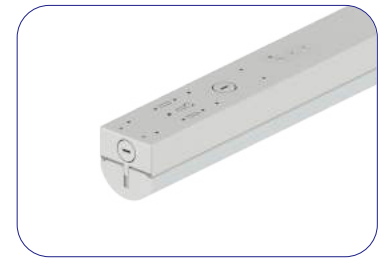
AC120-277V/347V  
2FT 4FT 8FT Length

Wattage Selectable  
In same dimension

### PC lens changeable



Square PC lens



Round PC lens

## Parameters

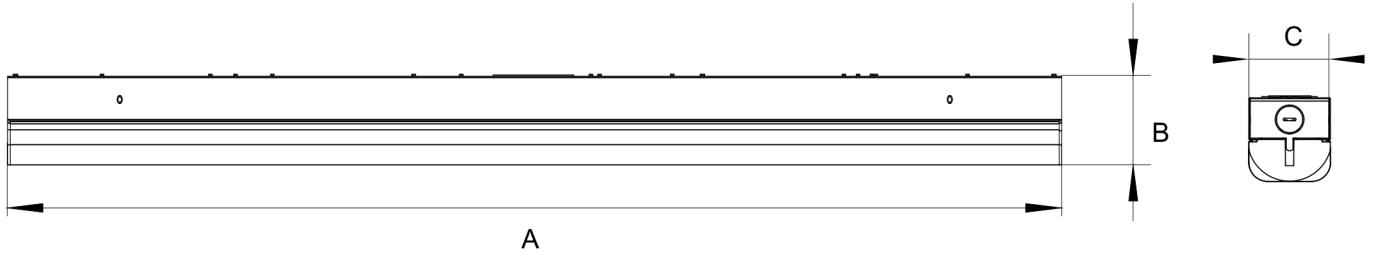
Model	Size	Power	Efficacy	Lumen	Input voltage	Beam Angle	CRI	CCT
X-LJZ(15/18/22/25)W-XXKYY-HP	2FT	15W/18W/22W/25W	130LM/W	1950LM/2340LM/2860LM/3250LM	AC120-277V/347V	120°	>80	3000K
X-LJZ(30/36/40/50)W-XXKYY-HP	4FT	30W/36W/40W/50W		3900LM/4680LM/5200LM/6500LM				4000K
X-LJZ(60/68/72/80)W-XXKYY-HP	8FT	60W/68W/72W/80W		7800LM/8840LM/9360LM/10400LM				5000K
								5700K

## Ordering Guide

For example: X-LJZXXW-XXKYY-HP

Brand	Product name	Shape	Power	CCT	Input voltage	Sensing function	Installation mode
X	LJ	Z	XXW	XXK	YY	H	P
XSX	LJ	S=Square R=Circular	(15/18/22/25)W (30/36/40/50)W (60/68/72/80)W	30K=3000K 40K=4000K 50K=5000K 57K=5700K (35/40/50)K=3500K 4000K 5000K (40/50/57)K=4000K 5000K 5700K	SV=120-277VAC LV=120-347VAC	M=With sensing function N=Without sensing function	I=Ceiling installation Q=chain

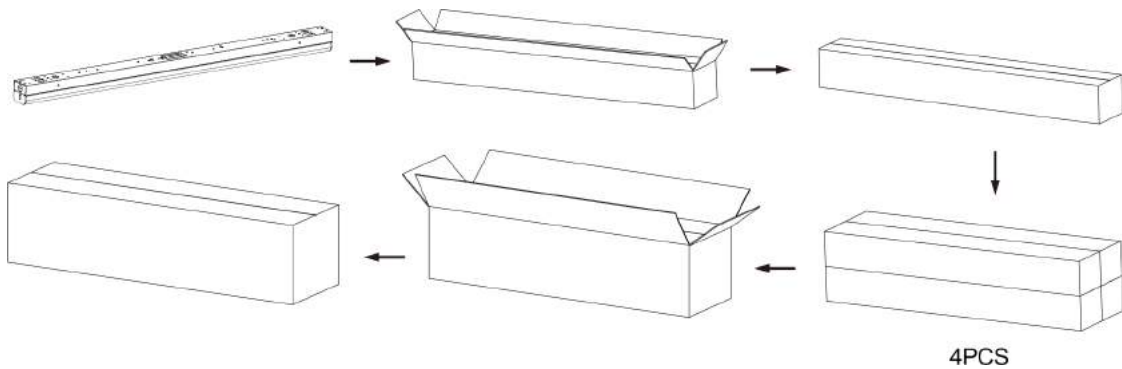
## Dimension



Length \ Size	A	B	C
2FT	23.98 "	2.62 "	2.56 "
4FT	47.99 "	2.62 "	2.56 "
8FT	95.98 "	2.62 "	2.56 "

## Package Info

Model	Carton Dimension	Qty / Carton	N.W	G.W
2FT	25.4"*6.3"*6.3"	4PCS	9.1lbs	10.77lbs
4FT	49.4"*6.3"*6.3"	4PCS	14.48lbs	19.27lbs
8FT	97.44"*6.3"*6.3"	4PCS	30lbs	36.31lbs



## Safety Precaution

To reduce the risk of death, personal injury or property damage from fire, electric shock, falling parts, cuts/abrasions, and other hazards read all warnings and instructions included with and on the fixture box and all fixture labels.

Before installing, servicing, or performing routine maintenance upon this equipment, follow these general precautions.

Commercial installation, service and maintenance of luminaires should be performed by a qualified licensed electrician.

For The installation: If you are unsure about the installation or maintenance of the luminaires, consult a qualified licensed electrician and check your local electrical code.

To prevent wiring damage or abrasion, do not expose wiring to edges of sheet metal or other sharp objects.

Do not make or alter any open holes in an enclosure of wiring or electrical components during kit installation.

### **WARNING: RISK OF FIRE OR ELECTRICAL SHOCK**

Turn off electrical power at fuse or circuit breaker box before wiring fixture to the power supply. Turn off the power when you perform any maintenance.

Verify that supply voltage is correct by comparing it with the luminaire label information.

Make all electrical and grounded connections in accordance with the National Electrical Code and any applicable local code requirements.

All wiring connections should be capped with UL approved wire connectors.

### **CAUTION: RISK OF INJURY**

Avoid direct eye exposure to the light source while it is on.

Account for small parts and destroy packing material, as these may be hazardous to children.

---