

Linear LED Retrofit Kit 4' or 8' Fixtures

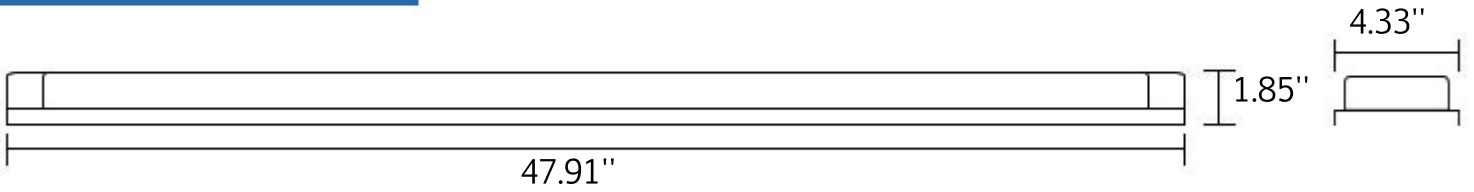
Our LED Linear Retrofit Kit delivers industry-leading performance with deep energy savings and continuous dimming. Easy and quick installation reduces labor cost and optimizes ROI. The retrofit kit eliminates the need to replace existing luminaire housing, which reduces install time and disposal/removal costs. Our kit transforms fluorescent utility strips into high-efficiency, architectural luminaires.



2T8 Retrofit strip light

Model	Watt	LPW	Typical Lumen	Length	Premium DLC	Installation Height
SPZ2T8F438P	LED 38W	130-150LM/W	5300lm	4ft	Low Bay	8ft-20ft
Model	Replacement for traditional T8/T10/T12/T5 Fluorescent tube					
SPZ2T8F438P	one 4ft fixture with 1pcs 4ft Fluorescent T10	110W/135W				
	one 4ft fixture with 2pcs 4ft Fluorescent T5	49W/54W				
	one 4ft fixture with 2pcs 4ft Fluorescent T12	30W/34W/40W				
	one 4ft fixture with 2pcs 4ft Fluorescent T8	28W/32W				

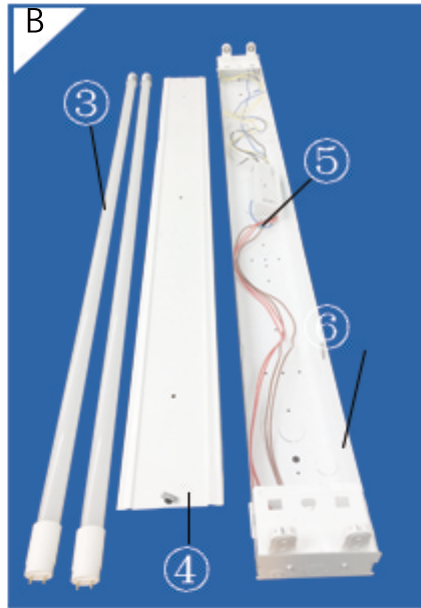
Dimension



Installation Guide



1. Retrofit Kit
2. Lithonia Fluorescent Fixture
3. Lamps
4. Base Cover
5. Ballast with Socket Bracket
6. Base Holder



Remove Lamps, Ballast, Socket Bracket, Base Cover from existing strip luminaire.



Place Retrofit Kit onto Existing Base Holder.



Drill six screw holes on both sides of base holder and them lock screws

Convert your existing 4' and 8' fluorescent strips to our architectural high-end LED fixture by simply removing the ballast cover and installing our SunPZone Retrofit Kit, which includes a ribbed diffuser lens designed to eliminate LED pixilation. It's the perfect retrofit answer to save energy while upgrading the look of your fixtures to meet a higher, architectural standard. This innovative kit is designed to retrofit 4' and 8' strips or to provide continuous runs to energy-saving LED. The Linear Retrofit Kit series is available in neutral or cool color temperatures and dimming comes standard. The upgrade retrofit kit is easy to install and fits almost any existing 4' or 8' linear strip, making it a perfect upgrade option where energy savings and long life are critical.

Application

Excellent for general utility applications to retrofit existing utility strip/channels. Parking garage, warehouse, offices, restrooms, storage units, stairwell.

Specification Features

CONSTRUCTION.

Integral LED gear tray and reflector with driver on board allows for easy installation and handling. Luminaire features matte white durable finish. Diffuser requires no additional frame or fastener for easy installation.

ELECTRICAL

Luminaire utilizes high-efficacy LED packages maintained at cool temperatures for long life, high efficacy. Reliable driver features continuous dimming. Universal voltage (120-277V) for convenient installation. Comes equipped with luminaire quick-disconnect.

INSTALLATION AND MOUNTING

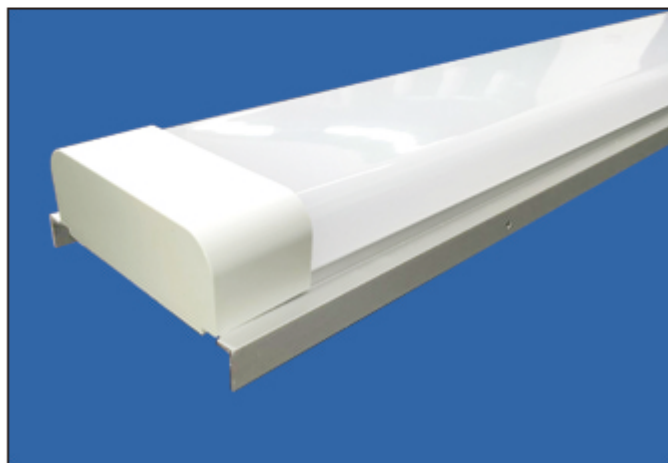
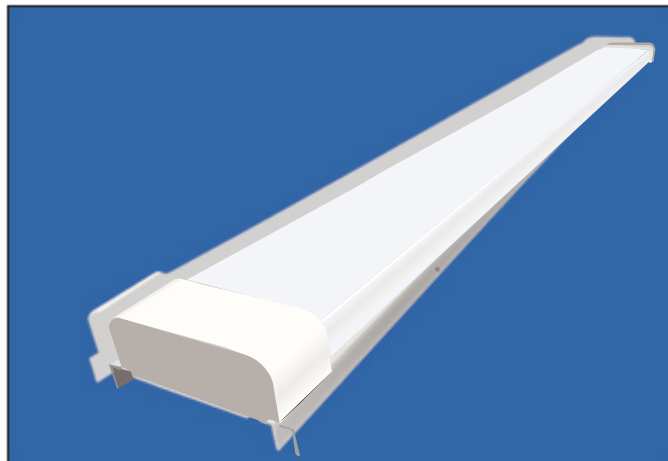
Features universal mounting bracket to fit strips with 4-1/2" to 5-1/2" width. Includes safety cables for security and wiring. Installs on existing strip housing.

CONTROLS AND DIMMING

Continuous dimming (0-10V) comes standard. Suitable for use with dimmers, sensors, daylight harvesting and other control strategies to achieve deeper energy-savings and code compliance. Fixture-integrated sensor accessory available: occupancy sensing with daylight cut-off.

OPTICAL SYSTEM

Reflector systems features highly reflective coating and delivers balanced, comfortable illuminance for productive spaces. Diffuser lens reduces glare and improves occupant comfort while maintaining high efficiency emission.



- LED Saves 60-75% of energy over HID and 40-50% over T8/T5HO
- Delivers high efficacy illumination at up to 130 -150 lumens per watt
- CRI: 83+
- 0-10V standard dimming
- ETL & DLC Premium 4.1 LM90@54000 hours
- Operating Temperature: -20° to +50°C Ambient
- Suitable for damp locations