

LED INTEGRATED LINEAR LIGHTING  
2, 3, 4, 5, 6, 8'  
V-Series  
Dual Row Cree 2835SMD LED



Both sides Light

## 1. Introduction

2019 New Integrated LED Linear Lighting with 85+ CRI and up to 152lm/Watt efficiency.

This light is dust proof and flame retardant.

## 2. Features

- A. Flame retardant PC cover and end cap, dust proof light.
- B. High 85+CRI and luminous flux, up to 80Ra and 152lm/Watt.
- C. Quick, simple installation
- D. High power factor
- E. 70% or more energy savings compared to conventional fluorescent tube systems.

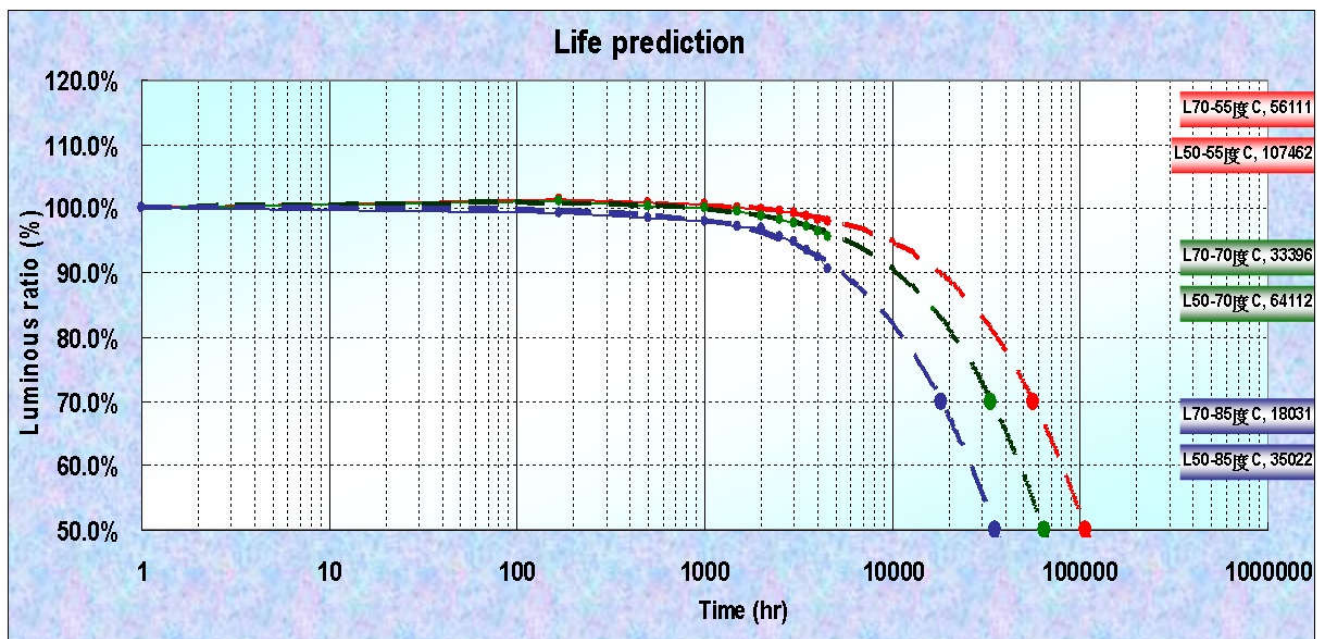
## 3. Certificates

**UL cUL FCC VDE GS CE SAA RoHS CQC PSE LVD EMC**

## 4. Application

Office lighting, Industrial/Commercial Shop, Factory, Parking Garage, Supermarkets, etc.

## 5. LED Durability Life Testing



**Specifications:**

T8

2 Foot 18 Watt 2,736 Lumen

3 Foot 25 Watt 3,800 Lumen

4 Foot 28 Watt 4,256 Lumen

4 Foot 36 Watt 5,472 Lumen

5 Foot 48 Watt 7,296 Lumen

6 Foot 56 Watt 8,512 Lumen

8 Foot 65 Watt 9,880 Lumen

8 Foot 72 Watt 10,944 Lumen

8 Foot 90 Watt 11,970 Lumen

Cree 2835SMD LED's CLEAR

COVER

85-265V Grounded Driver

152.33+ Lumens Per Watt - High Efficacy System with Superior Driver Technology.

5500-6500K (White) is standard, other Kelvin available by special order

W/Stainless Steel Mounting Hardware

Direct Wire Cord (Whip)

Linking Plug for Daisy Chaining up to 300 Watt run.

Socket Cap

Industrial/Commercial Grade

Interlinking for continuous runs

HO Fluorescent Equivalent

85+ CRI

Instant Start In Cold Conditions

No Flicker or Hum

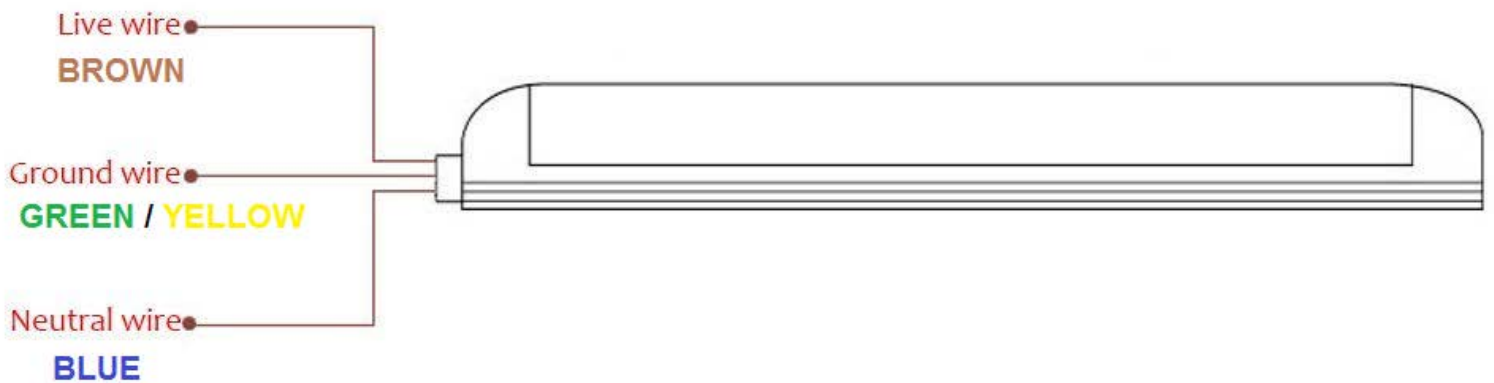
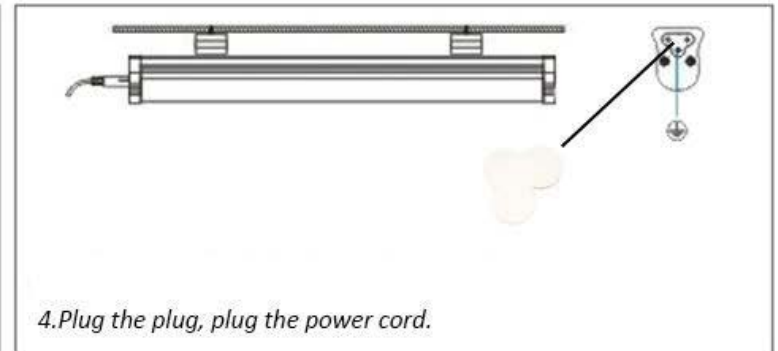
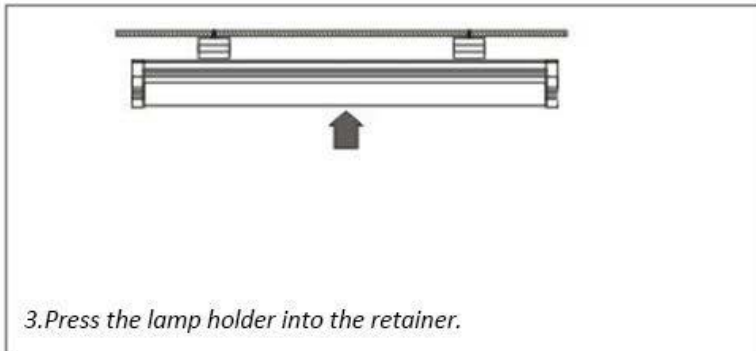
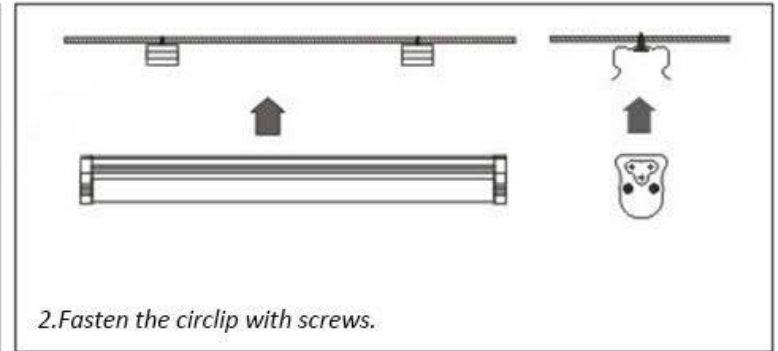
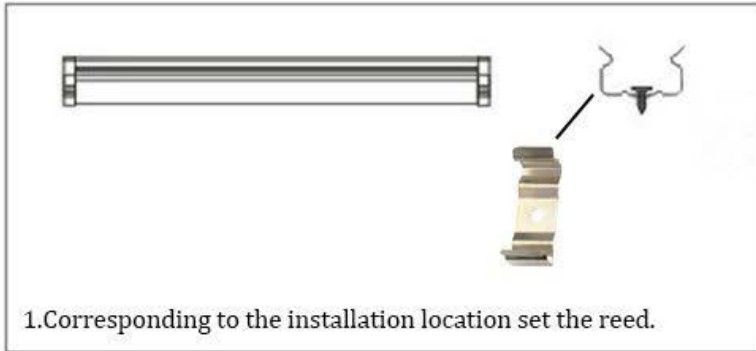
Aluminum/Polycarbonate Construction

12 Year Simple Exchange Warranty based on LM79 Rated 80,000 Hours

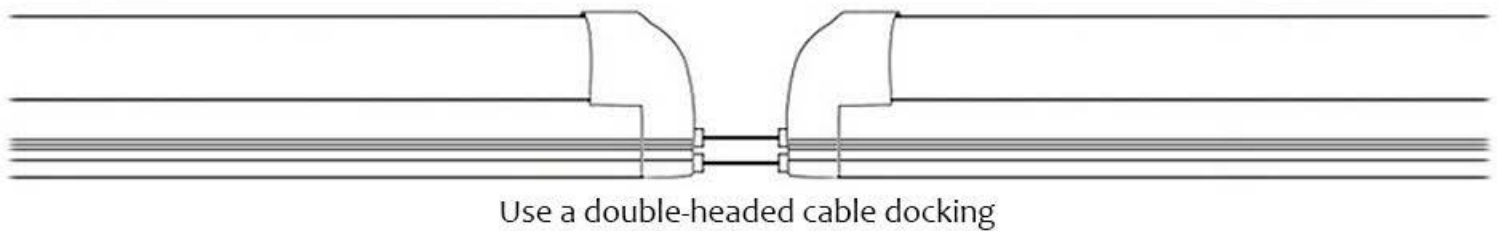
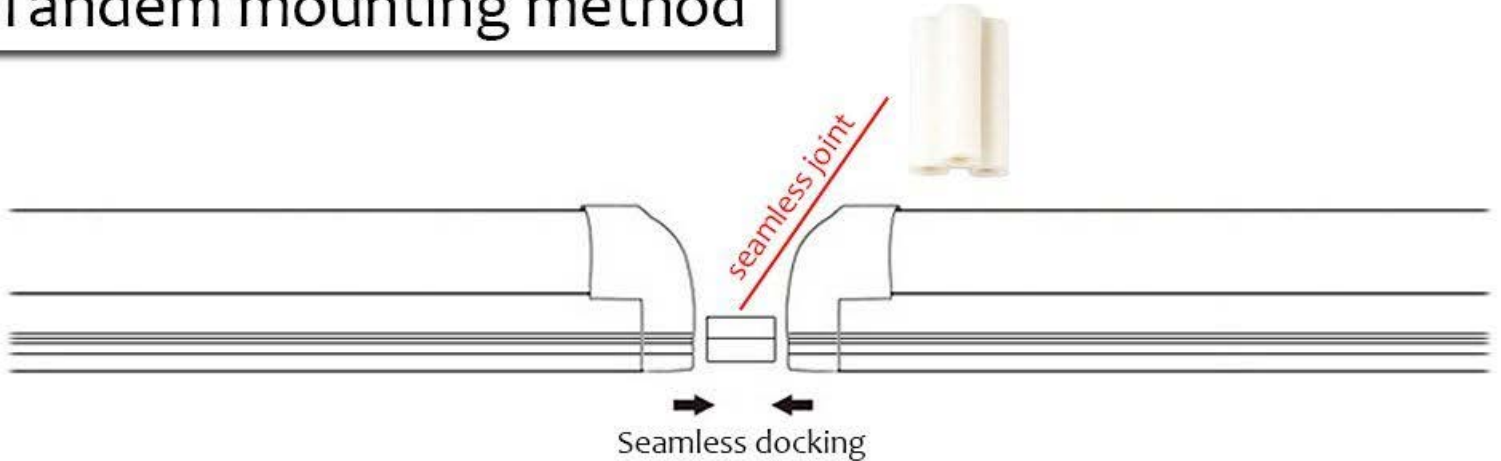
**Included accessories**



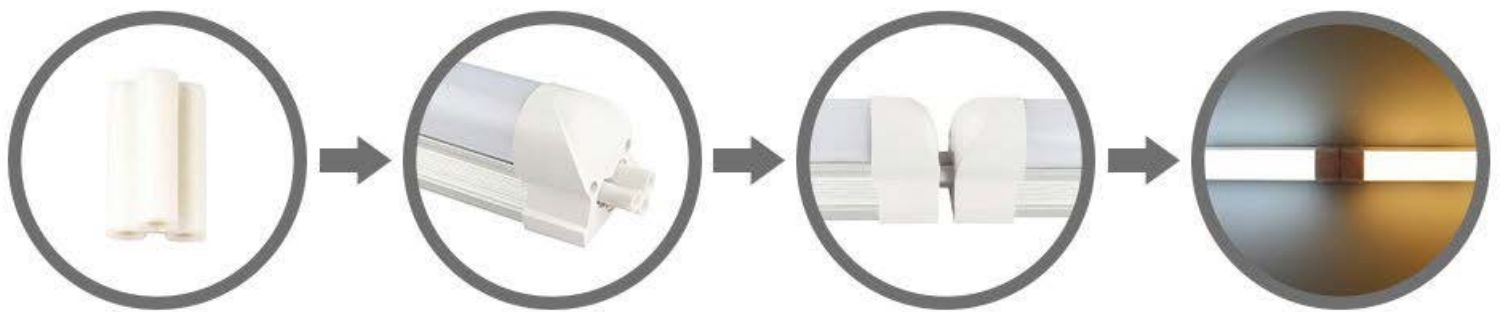
## Installation method



## Tandem mounting method



**Note: The maximum length of the double-headed cable docking can not exceed 4 feet**



- ❶ Find the matching seamless interface. ❷ Seamless interface is inserted into the interface.
- ❸ Take another light tube alignment interface. ❹ press both ends to install.

**Double-headed cable to force butt, installation is complete**