

DIMMABLE



MODEL: P02106-12W

6" 12W ultrathin falt panel light,
5CCT tuneable , 5 years warranty
IC rated and air tight



Features

Body

Durable airtight aluminum body with etched white polycarbonate diffuser lens for low glare

LED Characteristics

This general application light fixture features a 12 watt LED module that maintains uniform intensity producing up to 1400 lumens; with a typical CRI of 80+. Available 2700K,3000K,4000K,5000K,6000K,5CCT Tuneable

Dimming

5%-100% dimming capability. This fixture is compatible with industry standard TRIAC/ELV dimmers.

Mounting

Includes two spring loaded clips to attached to any ceiling material. The slim profile allows to be mounted under joists or duct work.

Beam angle

110°

Warranty

10 year warranty

LED Driver

Extruded junction box with 280mA dimmable class II electronic LED driver with 100-130V 60Hz input. Includes an 18AWAG cable from driver to fixture.

Quick Connect push-in terminals

Three "Quick connect" push-in terminals for fast and easy wiring.

Operating Temperature

-40°C~40°C(-4°F~105°F)

Environment

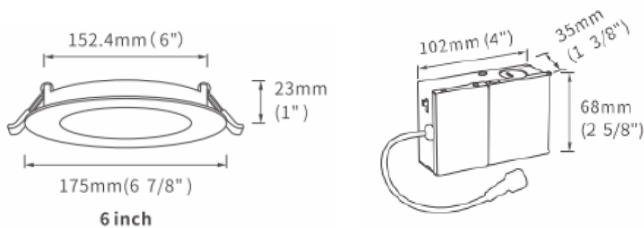
Suitable for damp locations. Suitable for insulated ceiling applications.

Lifespan

50000 hours at 70% light output.

Certificate

ETL
Energy Star



Description

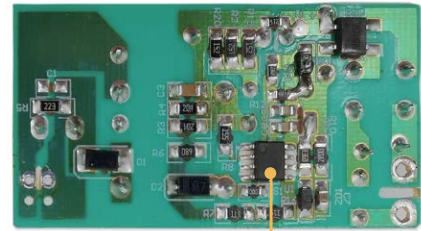
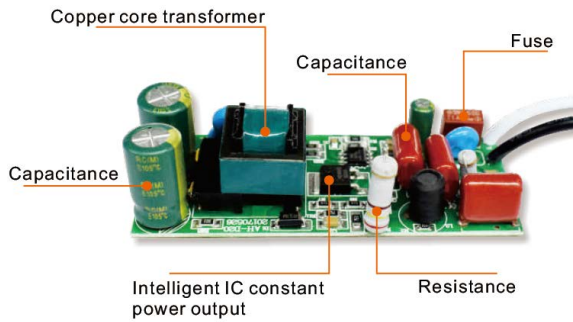
This ultra thin recess light is a 12 watt 6" slim profile light fixture for recess retrofit application. It is a high-performance, easy to install residential grade downlight solution that offers good light output, energy efficiency and stream lined design, suitable for damp locations.

Product Structure

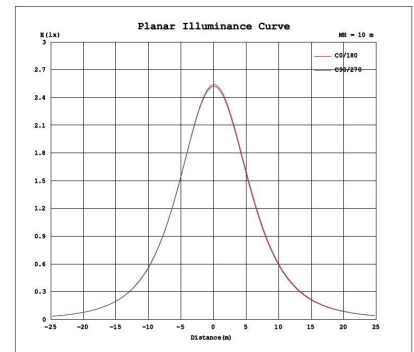
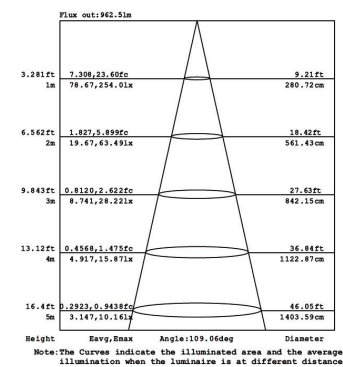
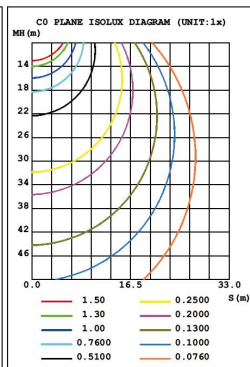
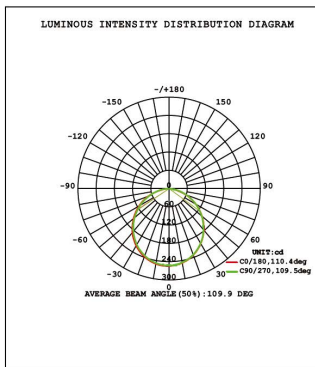


Item No.	Luminous	Light Source	CCT	Input Voltage	Wattage	CRI	Finish	Size Φ mm	Dimmable
P02106-12W	1400	SMD2835	27K/30K/40K/50K/60K	100-130V 60Hz	12W	≥ 90	WH	Φ 170*H20	Yes

LED Driver

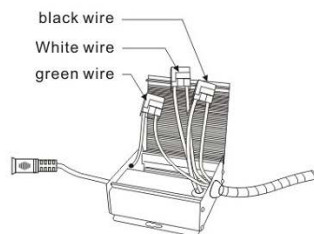


Photometry



Installation

Fig.1



or

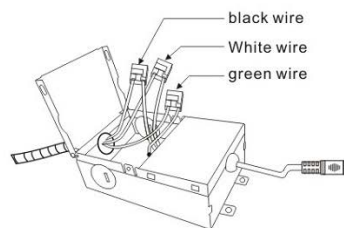


Fig.2

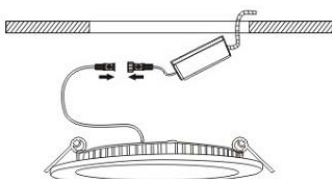


Fig.3

