

**DIMMABLE**

**MODEL: P02106-12W**



6" 12W ultrathin falt panel light,  
5CCT tuneable , 5 years warranty  
IC rated and air tight



## **Features**

### **Body**

Durable airtight aluminum body with etched white polycarbonate diffuser lens for low glare

### **LED Characteristics**

This general application light fixture features a 12 watt LED module that maintains uniform intensity producing up to 960 lumens; with a typical CRI of 80+. Available 2700K,3000K,4000K,5000K,6000K,3CCT Tuneable,5CCT Tuneable

### **Dimming**

5%-100% dimming capability. This fixture is compatible with industry standard TRIAC/ELV dimmers.

### **Mounting**

Includes two spring loaded clips to attached to any ceiling material. The slim profile allows to be mounted under joists or duct work.

### **Beam angle**

110°

### **Warranty**

10 year warranty

### **LED Driver**

Extruded junction box with 280mA dimmable class II electronic LED driver with 100-130V 60Hz input. Includes an 18AWAG cable from driver to fixture.

### **Quick Connect push-in terminals**

Three "Quick connect" push-in terminals for fast and easy wiring.

### **Operating Temperature**

-40°C~40°C(-4°F~105°F)

### **Environment**

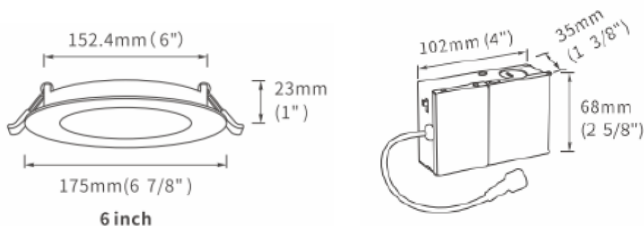
Suitable for damp locations. Suitable for insulated ceiling applications.

### **Lifespan**

50000 hours at 70% light output.

### **Certificate**

ETL  
Energy Star



## **Description**

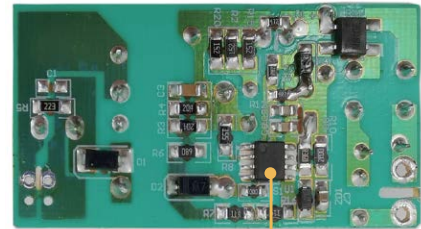
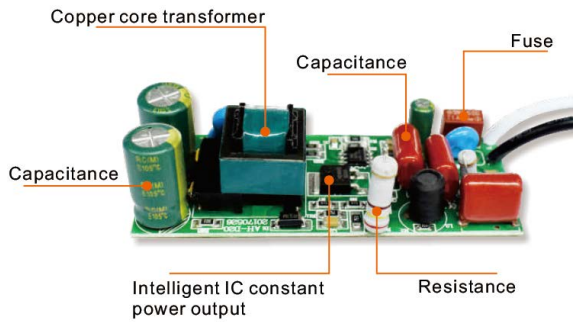
This ultra thin recess light is a 12 watt 6" slim profile light fixture for recess retrofit application. It is a high-performance, easy to install residential grade downlight solution that offers good light output, energy efficiency and stream lined design, suitable for damp locations.

## **Product Structure**

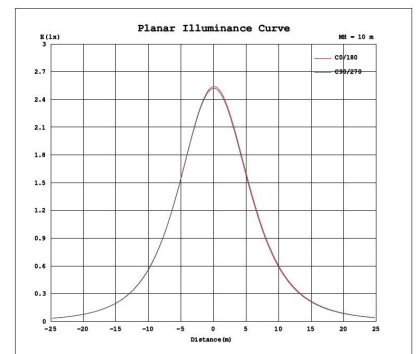
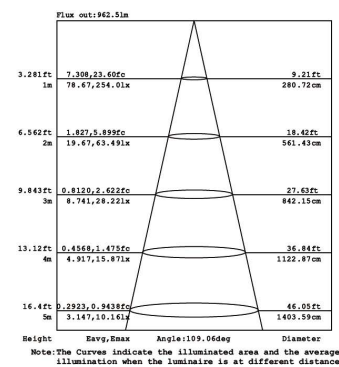
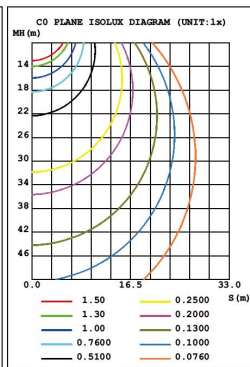
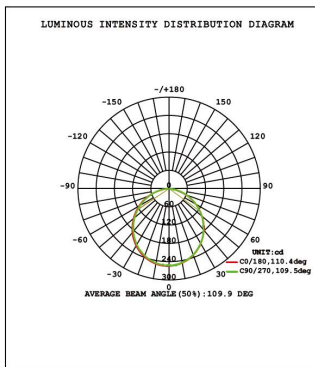


Item No.	Luminous	Light Source	CCT	Input Voltage	Wattage	CRI	Finish	Size $\Phi$ mm	Dimmable
P02106-12W	960	SMD2835	27K/30K/35K/40K/50K	100-130V 60Hz	12W	$\geq 90$	WH	$\Phi$ 170*H20	Yes

## LED Driver

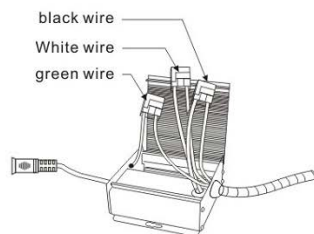


## Photometry



## Installation

Fig.1



or

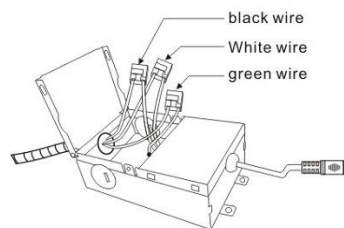


Fig.2

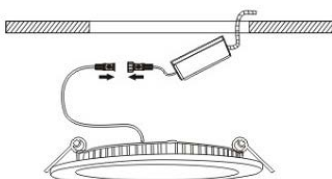


Fig.3

