

## LED Grow Light SUNMAX MINI SERIES

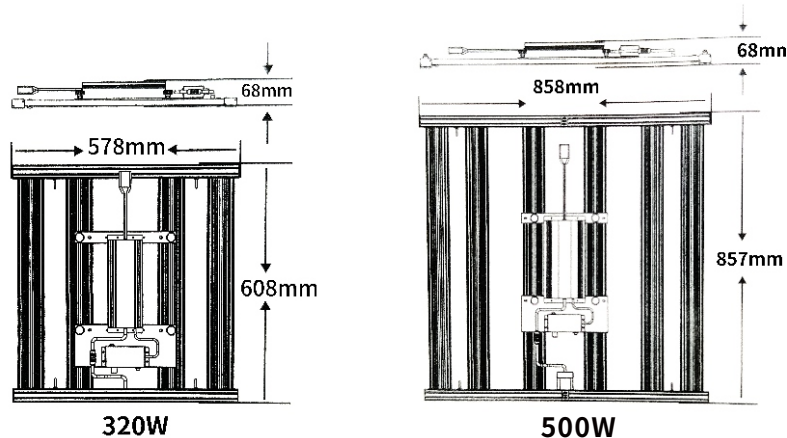


### FEATURES & SPECIFICATIONS

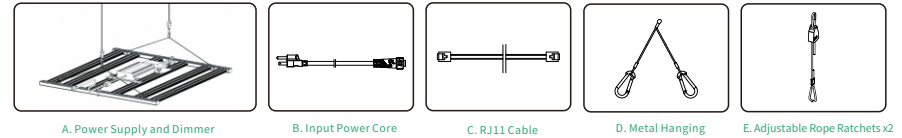
The Sunmax Mini series LED grow light features a full-spectrum light, similar to the sun to provide high efficient lighting from seeding to harvest. It is an ideal choice for hobbyists and commercial growers. The 180-degree folding structure design makes the growing light more flexible, and more simple to install, just plug and play. series growing lights detached with a switch controller. A single light can be adjusted to the light intensity freely. Multi-light Connection with unified dimming is especially beneficial for large areas of indoor growing and commercial planting.

With the FCC certification, the grow light can be safely used for indoor plants, hydroponics, greenhouses, etc.

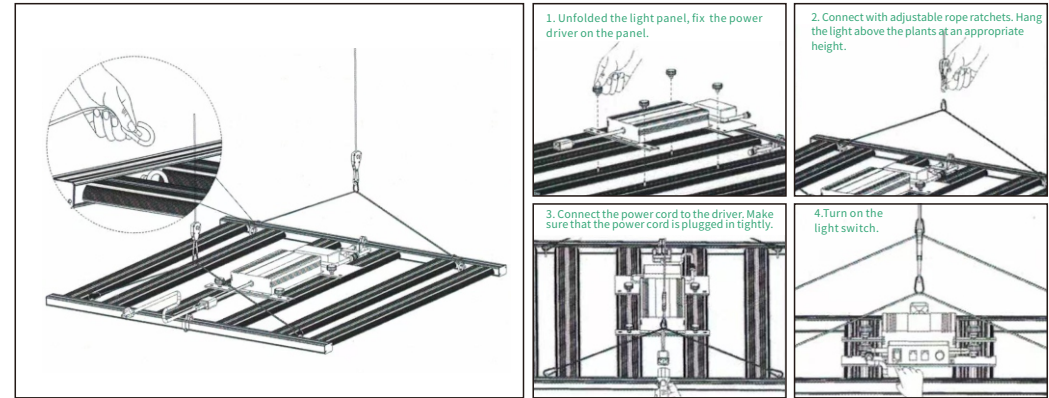
Model	SUNMAX MINI-4 Bar	SUNMAX MINI-6 Bar
AC Input Power	320W	500W
Input Voltage	AC110-277V	AC110-277V
Diodes Brand	samsung & Osram	samsung & Osram
PPE	2.9 umol/J	2.9 umol/J
For Grow Room	3X3FT	4X4FT
Max Yield	2.5g/W	2.5g/W
Daisy Chain & Dimmer	Yes	Yes
Spectrum	Full spectrum UV IR	



### PACKAGE CONTENT

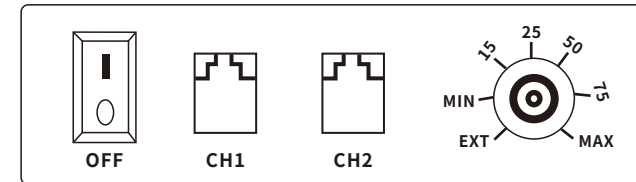


### ASSEMBLY INSTRUCTIONS



### OPTION 1: SINGLE LIGHT DIMMING OPERATION

- Step 1. Turn on the light switch  
Step 2. Adjust the light intensity from Min to Max (Do not turn to EXT)



### OPTION 2: MULTI-LIGHT DIMMING OPERATION

- If you choose this operation, all light output (brightness) is the same.  
Step 1. Connect multiple lights with the included RJ11 cables (support up to 50 lights)  
Step 2. Choose one as main-light, other as sub-lights (eg, A as main-light, B & C as sub-lights)  
(1) Turn on the light switch of A, A controls the on/off of B & C  
(2) The dimming knob switch is turned to "EXT" for the sub-lights (B & C)  
Step 3. After completing step 1 and step 2, the turn dimmer knob of A controls the brightness of B & C. The larger of the scale value, the intenser of the brightness

### OPTION 3: EXTERNAL DIMMING SYSTEM OPERATION

When the light dimming Knob is turned to "EXT" and the RJ11 cable is connected to an external dimmer, the brightness is controlled by the external dimmer, supports 0-10V and PWM dimming signal.

