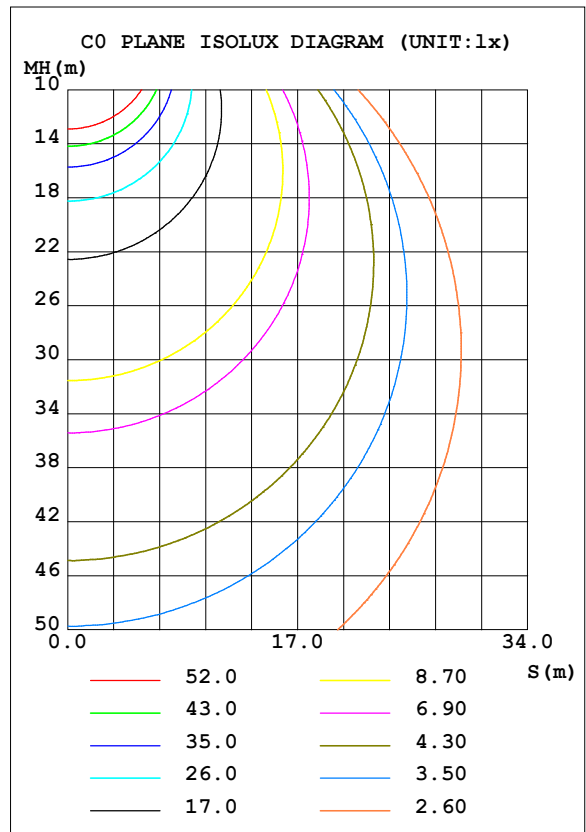
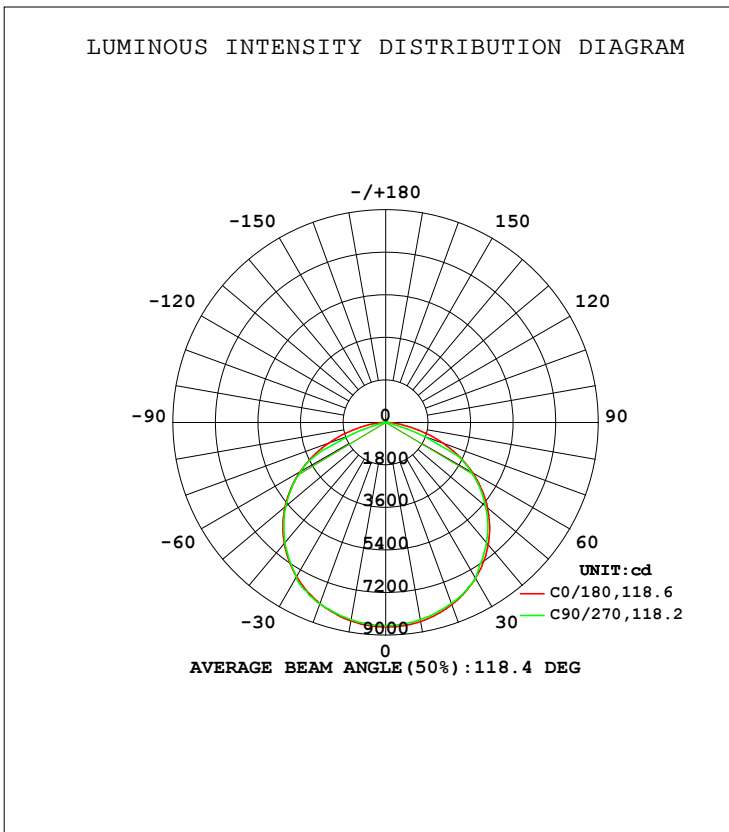


LUMINAIRE PHOTOMETRIC TEST REPORT

NAME: SPZLHB14F130 2064	TYPE:	WEIGHT:
SPEC.:	DIM.:	SERIAL No.:1
MFR.: EVERFINE	SUR.:	Shielding Angle:

DATA OF LAMP		PHOTOMETRIC DATA Eff: 197.30 lm/W			
MODEL	SPZLHB14F130	I _{max} (cd)	8659	S/MH (C0/180)	1.30
NOMINAL POWER (W)	130	LOR (%)	100.0	S/MH (C90/270)	1.30
RATED VOLTAGE (V)	120-277	TOTAL FLUX (lm)	25344	η UP, DN (C0-180)	0.3, 49.8
NOMINAL FLUX (lm)	25344.5	CIE CLASS	DIRECT	η UP, DN (C180-360)	0.4, 49.5
LAMPS INSIDE	1	η up (%)	0.7	CIBSE SHR NOM	1.25
TEST VOLTAGE (V)	120	η down (%)	99.3	CIBSE SHR MAX	1.35



C Range: 0 - 360DEG
 C Interval: 22.5DEG
 Test Speed: HIGH
 Temperature: 25.3DEG
 Operators: DAMIN
 Test Date: 2018-08-29

γ Range: 0 - 180DEG
 γ Interval: 1.0DEG
 Test System: EVERFINE GO-2000B_V1 SYSTEM V2.0.361
 Humidity: 65.0%
 Test Distance: 6.476m [K=1.0000]
 Remarks:

ZONAL FLUX DIAGRAM

ZONAL FLUX DIAGRAM:

γ	C0	C45	C90	C135	C180	C225	C270	C315	γ	Φ zone	Φ total	%lum, lamp
10	8548	8495	8470	8455	8525	8491	8479	8467	0- 10	815.5	815.5	3.22,3.22
20	8197	8149	8148	8088	8156	8131	8163	8113	10- 20	2355	3171	12.5,12.5
30	7608	7626	7613	7531	7542	7587	7569	7586	20- 30	3638	6809	26.9,26.9
40	6751	6722	6636	6747	6685	6693	6633	6693	30- 40	4478	11287	44.5,44.5
50	5633	5557	5523	5520	5567	5551	5517	5523	40- 50	4744	16031	63.3,63.3
60	4243	4179	4171	4174	4204	4198	4167	4161	50- 60	4387	20418	80.6,80.6
70	2598	2602	1764	2625	2577	2634	1649	2593	60- 70	3292	23710	93.6,93.6
80	938.0	122.7	95.01	218.3	951.4	203.7	91.95	197.9	70- 80	1301	25011	98.7,98.7
90	10.37	8.529	7.338	10.06	14.76	13.20	10.41	11.50	80- 90	148.2	25159	99.3,99.3
100	16.77	15.04	12.64	16.14	22.64	20.02	16.39	18.72	90-100	14.78	25174	99.3,99.3
110	22.78	20.84	19.58	22.36	29.82	27.14	24.19	25.37	100-110	21.94	25196	99.4,99.4
120	28.34	26.90	25.44	28.67	36.25	33.98	30.86	32.07	110-120	26.92	25223	99.5,99.5
130	33.21	32.04	31.59	33.23	41.37	38.35	37.26	37.26	120-130	29.58	25253	99.6,99.6
140	36.73	35.62	35.22	37.36	43.87	41.49	40.46	40.16	130-140	28.86	25281	99.8,99.8
150	40.10	38.75	38.51	42.19	45.45	44.65	41.90	41.82	140-150	25.23	25307	99.9,99.9
160	43.01	42.14	42.82	46.99	46.35	48.75	44.70	44.60	150-160	19.99	25327	99.9,99.9
170	45.73	45.99	49.13	48.50	47.46	49.25	49.72	47.44	160-170	13.15	25340	100,100
180	48.00	48.27	50.88	48.80	48.16	48.36	50.93	48.84	170-180	4.632	25344	100,100
DEG	LUMINOUS INTENSITY:cd									UNIT:lm		

Conical surface Flux(90deg): 13663 lm

%lum = 53.9%

%lamp = 53.9%

Conical surface Flux(120deg): 20418 lm

%lum = 80.6%

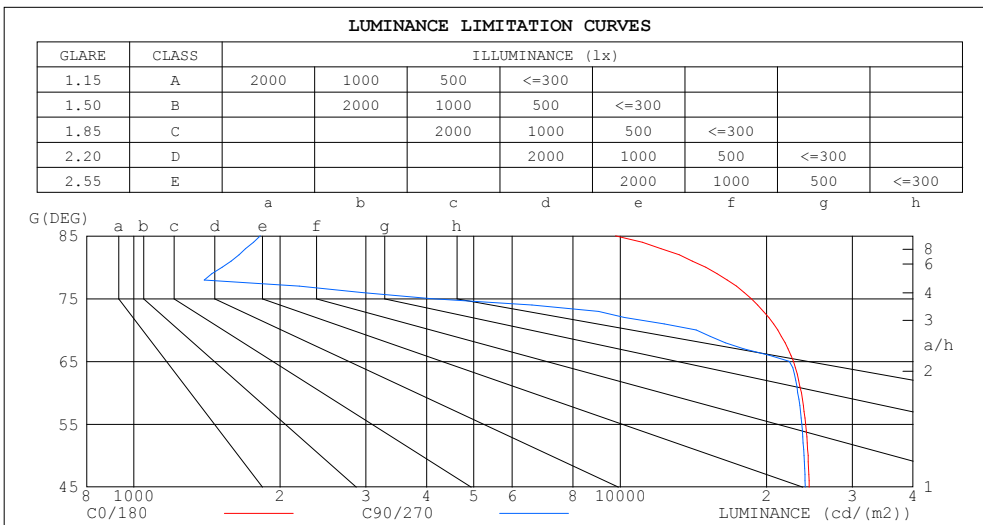
%lamp = 80.6%

C Range: 0 - 360DEG
 C Interval: 22.5DEG
 Test Speed: HIGH
 Temperature:25.3DEG
 Operators:DAMIN
 Test Date:2018-08-29

γ Range: 0 - 180DEG
 γ Interval: 1.0DEG
 Test System:EVERFINE GO-2000B_V1 SYSTEM V2.0.361
 Humidity:65.0%
 Test Distance:6.476m [K=1.0000]
 Remarks:

LUMINANCE LIMITATION CURVES

NAME: SPZLHB14F130 2064	TYPE:	WEIGHT:
SPEC.:	DIM.:	SERIAL No.: 1
MFR.: EVERFINE	SUR.:	Shielding Angle:



LUMINANCE cd/(m2)		
G (DEG)	C0/180	C90/270
85	9783	1819
80	15004	1520
75	18610	4077
70	21097	14327
65	22706	22264
60	23574	23171
55	24068	23622
50	24341	23866
45	24458	24008

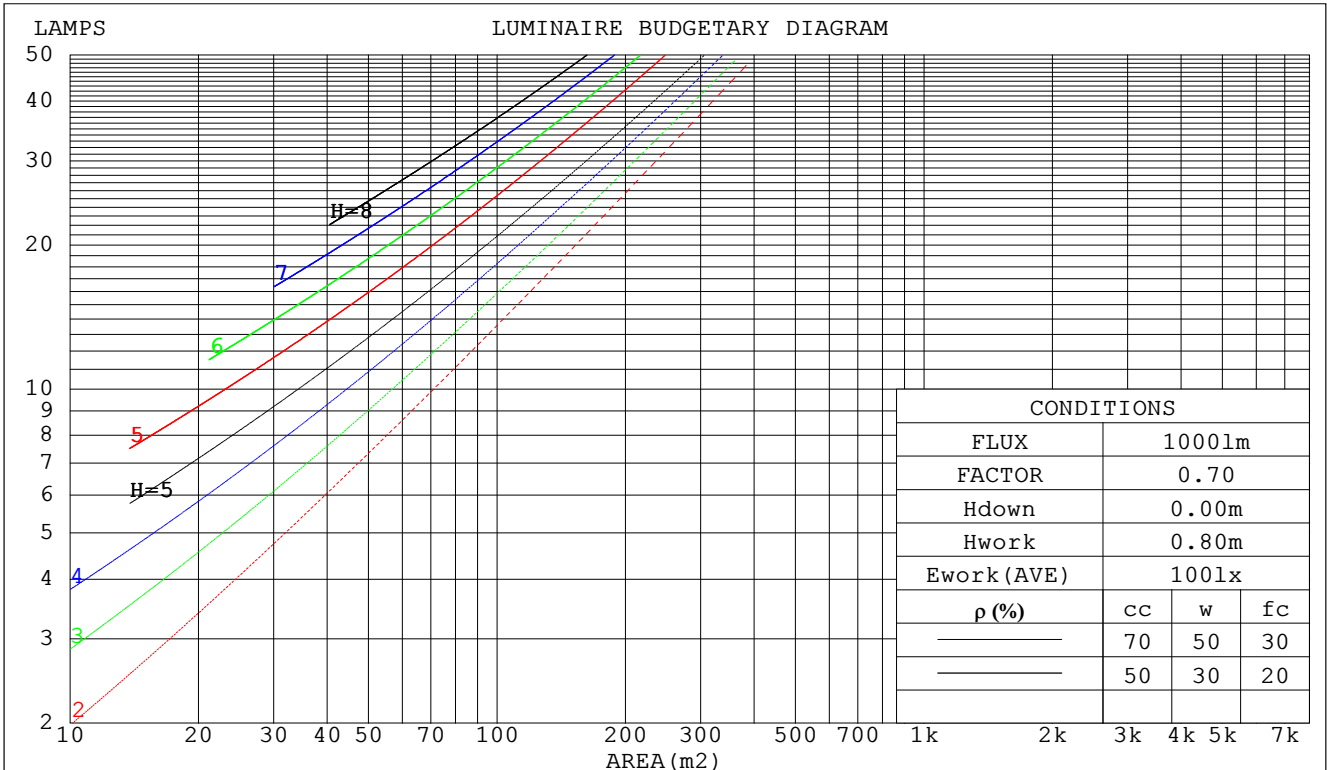
C Range: 0 - 360DEG
 C Interval: 22.5DEG
 Test Speed: HIGH
 Temperature: 25.3DEG
 Operators: DAMIN
 Test Date: 2018-08-29

γ Range: 0 - 180DEG
 γ Interval: 1.0DEG
 Test System: EVERFINE GO-2000B_V1 SYSTEM V2.0.361
 Humidity: 65.0%
 Test Distance: 6.476m [K=1.0000]
 Remarks:

CU AND LUMINAIRE BUDGETARY ESTIMATE DIAGRAM

NAME: SPZLHB14F130 2064	TYPE:	WEIGHT:
SPEC.:	DIM.:	SERIAL No.: 1
MFR.: EVERFINE	SUR.:	Shielding Angle:

ρ_{cc}	80%			70%			50%			30%			10%			0
ρ_w	50%	30%	10%	50%	30%	10%	50%	30%	10%	50%	30%	10%	50%	30%	10%	0
ρ_{fc}	20%			20%			20%			20%			20%			0
RCR	RCR:Room Cavity Ratio						Coefficients of Utilization(CU)									
0.0	1.19	1.19	1.19	1.16	1.16	1.16	1.11	1.11	1.11	1.06	1.06	1.06	1.01	1.01	1.01	.99
1.0	1.05	1.01	.97	1.02	.99	.95	.98	.95	.92	.94	.92	.89	.90	.88	.87	.84
2.0	.91	.85	.79	.89	.83	.78	.86	.81	.76	.82	.78	.74	.79	.76	.73	.71
3.0	.80	.72	.66	.79	.71	.65	.76	.69	.64	.73	.67	.63	.70	.65	.62	.59
4.0	.71	.62	.56	.70	.61	.55	.67	.60	.54	.65	.58	.53	.62	.57	.53	.51
5.0	.63	.54	.48	.62	.54	.47	.60	.52	.47	.58	.51	.46	.56	.50	.46	.44
6.0	.57	.48	.41	.56	.47	.41	.54	.46	.41	.52	.46	.40	.51	.45	.40	.38
7.0	.51	.43	.37	.51	.42	.36	.49	.41	.36	.47	.41	.36	.46	.40	.35	.33
8.0	.47	.38	.32	.46	.38	.32	.45	.37	.32	.43	.37	.32	.42	.36	.32	.30
9.0	.43	.35	.29	.42	.34	.29	.41	.34	.29	.40	.33	.29	.39	.33	.28	.27
10.0	.40	.32	.26	.39	.31	.26	.38	.31	.26	.37	.30	.26	.36	.30	.26	.24



C Range: 0 - 360DEG
 C Interval: 22.5DEG
 Test Speed: HIGH
 Temperature:25.3DEG
 Operators:DAMIN
 Test Date:2018-08-29

γ Range: 0 - 180DEG
 γ Interval: 1.0DEG
 Test System:EVERFINE GO-2000B_V1 SYSTEM V2.0.361
 Humidity:65.0%
 Test Distance:6.476m [K=1.0000]
 Remarks:

WEC AND CCEC

NAME: SPZLHB14F130 2064	TYPE:	WEIGHT:
SPEC.:	DIM.:	SERIAL No.:1
MFR.: EVERFINE	SUR.:	Shielding Angle:

ρ_{CC}	80%			70%			50%			30%			10%			0
ρ_w	50%	30%	10%	50%	30%	10%	50%	30%	10%	50%	30%	10%	50%	30%	10%	0
ρ_{fc}	20%			20%			20%			20%			20%			0
RCR	RCR:Room Cavity Ratio						Wall Exitance Coefficients (WEC)									
0.0																
1.0	.290	.165	.052	.283	.162	.051	.270	.155	.049	.257	.148	.048	.246	.142	.046	
2.0	.281	.154	.047	.274	.151	.047	.262	.146	.045	.251	.141	.044	.241	.136	.043	
3.0	.263	.140	.042	.258	.138	.042	.247	.134	.041	.237	.130	.040	.228	.126	.039	
4.0	.245	.127	.037	.240	.126	.037	.231	.122	.037	.222	.119	.036	.214	.116	.035	
5.0	.228	.116	.034	.223	.115	.033	.215	.112	.033	.207	.109	.032	.200	.107	.032	
6.0	.212	.106	.030	.208	.105	.030	.200	.103	.030	.193	.101	.030	.187	.098	.029	
7.0	.198	.098	.028	.194	.097	.028	.187	.095	.027	.181	.093	.027	.175	.091	.027	
8.0	.185	.090	.025	.182	.089	.025	.176	.088	.025	.170	.086	.025	.165	.085	.025	
9.0	.174	.084	.023	.171	.083	.023	.165	.082	.023	.160	.080	.023	.155	.079	.023	
10.0	.163	.078	.022	.161	.078	.022	.156	.076	.021	.151	.075	.021	.147	.074	.021	

ρ_{CC}	80%			70%			50%			30%			10%			0
ρ_w	50%	30%	10%	50%	30%	10%	50%	30%	10%	50%	30%	10%	50%	30%	10%	0
ρ_{fc}	20%			20%			20%			20%			20%			0
RCR	RCR:Room Cavity Ratio						Ceiling Cavity Exitance Coefficients (CCEC)									
0.0	.196	.196	.196	.168	.168	.168	.114	.114	.114	.066	.066	.066	.021	.021	.021	
1.0	.185	.162	.142	.158	.139	.122	.108	.096	.084	.062	.055	.049	.020	.018	.016	
2.0	.176	.138	.105	.151	.118	.091	.104	.082	.063	.060	.048	.037	.019	.015	.012	
3.0	.169	.120	.081	.145	.103	.070	.099	.072	.049	.057	.042	.029	.018	.014	.009	
4.0	.162	.107	.065	.139	.092	.056	.095	.064	.040	.055	.038	.023	.018	.012	.008	
5.0	.154	.096	.053	.133	.083	.046	.091	.058	.033	.053	.034	.019	.017	.011	.006	
6.0	.147	.088	.045	.127	.076	.039	.087	.053	.028	.051	.031	.017	.016	.010	.005	
7.0	.141	.081	.039	.121	.070	.034	.084	.049	.024	.049	.029	.014	.016	.009	.005	
8.0	.134	.075	.035	.116	.065	.030	.080	.046	.021	.047	.027	.013	.015	.009	.004	
9.0	.128	.070	.031	.111	.061	.027	.077	.043	.019	.045	.025	.011	.014	.008	.004	
10.0	.123	.066	.028	.106	.057	.025	.073	.040	.018	.043	.024	.010	.014	.008	.003	

C Range: 0 - 360DEG
 C Interval: 22.5DEG
 Test Speed: HIGH
 Temperature: 25.3DEG
 Operators: DAMIN
 Test Date: 2018-08-29

γ Range: 0 - 180DEG
 γ Interval: 1.0DEG
 Test System: EVERFINE GO-2000B_V1 SYSTEM V2.0.361
 Humidity: 65.0%
 Test Distance: 6.476m [K=1.0000]
 Remarks:

UGR(Unified Glare Rating) Table

NAME: SPZLHB14F130 2064					TYPE:					WEIGHT:				
SPEC.:					DIM.:					SERIAL No.:1				
MFR.: EVERFINE					SUR.:					Shielding Angle:				
ceiling/cavity	0.7	0.7	0.5	0.5	0.3	0.7	0.7	0.5	0.5	0.3				
walls	0.5	0.3	0.5	0.3	0.3	0.5	0.3	0.5	0.3	0.3				
working plane	0.2	0.2	0.2	0.2	0.2	0.2	0.2	0.2	0.2	0.2				
Room dimensions	Viewed crosswise					Viewed endwise								
x = 2H y = 2H	12.9	14.4	13.2	14.7	14.9	12.8	14.3	13.1	14.6	14.8				
3H	14.5	15.8	14.8	16.1	16.3	13.9	15.3	14.2	15.5	15.8				
4H	15.0	16.3	15.3	16.6	16.9	13.9	15.2	14.3	15.5	15.8				
6H	15.3	16.6	15.7	16.8	17.1	13.8	15.1	14.2	15.3	15.6				
8H	15.4	16.6	15.7	16.9	17.2	13.8	15.0	14.1	15.3	15.6				
12H	15.4	16.5	15.8	16.8	17.2	13.7	14.9	14.1	15.2	15.5				
4H 2H	13.5	14.9	13.9	15.1	15.4	13.5	14.8	13.8	15.0	15.3				
3H	15.2	16.4	15.6	16.7	17.0	14.6	15.8	15.0	16.1	16.4				
4H	15.9	16.9	16.3	17.2	17.6	14.7	15.7	15.1	16.0	16.4				
6H	16.3	17.2	16.7	17.6	18.0	14.6	15.5	15.0	15.9	16.2				
8H	16.4	17.2	16.8	17.6	18.0	14.5	15.4	15.0	15.8	16.2				
12H	16.4	17.2	16.8	17.6	18.0	14.5	15.3	14.9	15.7	16.1				
8H 4H	15.9	16.8	16.3	17.1	17.5	14.8	15.6	15.2	16.0	16.4				
6H	16.4	17.1	16.8	17.5	18.0	14.7	15.4	15.2	15.8	16.3				
8H	16.5	17.1	17.0	17.5	18.0	14.7	15.3	15.1	15.7	16.2				
12H	16.5	17.0	17.0	17.5	18.0	14.6	15.2	15.1	15.6	16.1				
12H 4H	15.9	16.6	16.3	17.0	17.5	14.8	15.5	15.2	15.9	16.4				
6H	16.4	17.0	16.8	17.4	17.9	14.7	15.3	15.2	15.8	16.2				
8H	16.5	17.0	16.9	17.4	17.9	14.7	15.2	15.2	15.7	16.1				
Variations with the observer position at spacings:														
S = 1.0H	+ 0.2 / - 0.2					+ 0.3 / - 0.5								
1.5H	+ 0.2 / - 0.3					+ 0.3 / - 0.5								
2.0H	+ 0.2 / - 0.3					+ 0.4 / - 0.8								

CIE Pub.117, 25344 lm Total Lamp Luminous Flux Correct (8log(F/F0) = 11.2)

C Range: 0 - 360DEG
 C Interval: 22.5DEG
 Test Speed: HIGH
 Temperature:25.3DEG
 Operators:DAMIN
 Test Date:2018-08-29

γ Range: 0 - 180DEG
 γ Interval: 1.0DEG
 Test System:EVERFINE GO-2000B_V1 SYSTEM V2.0.361
 Humidity:65.0%
 Test Distance:6.476m [K=1.0000]
 Remarks:

UTILIZATION FACTORS TABLE

NAME: SPZLHB14F130 2064	TYPE:	WEIGHT:
SPEC.:	DIM.:	SERIAL No.: 1
MFR.: EVERFINE	SUR.:	Shielding Angle:

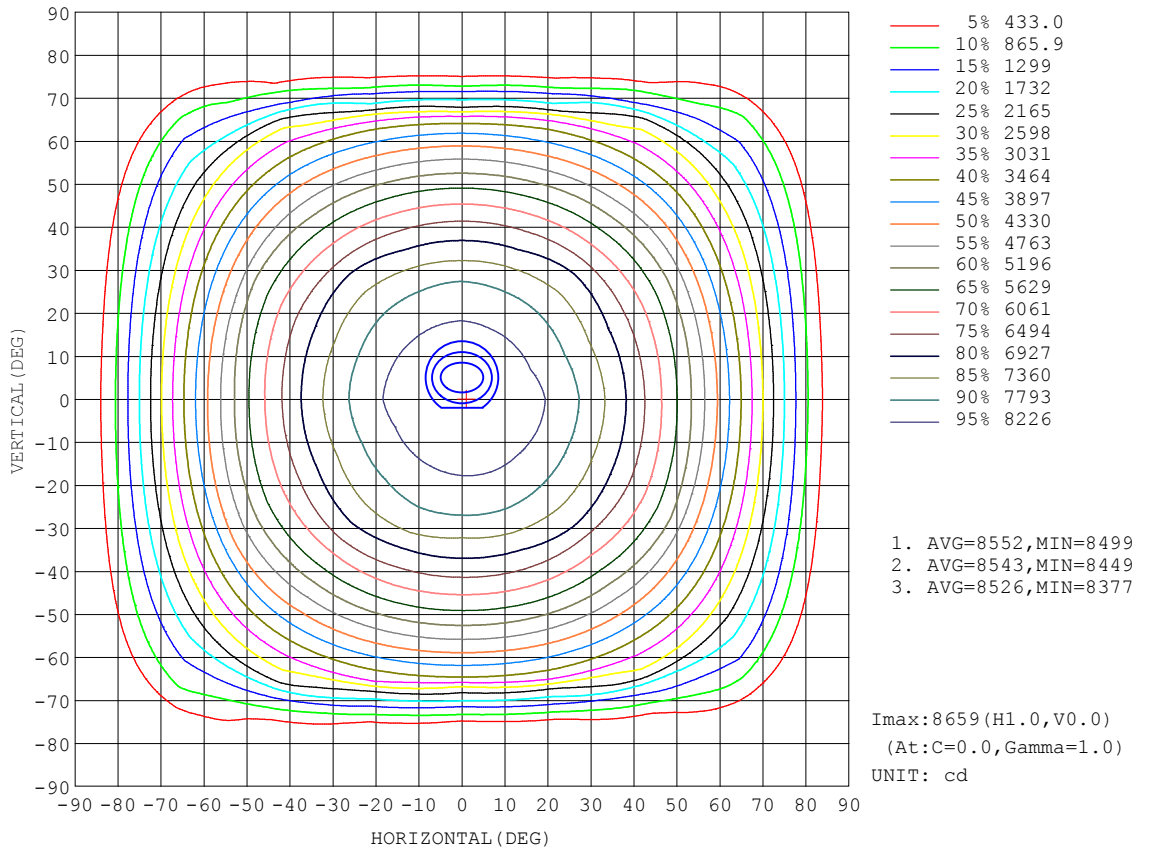
REFLECTANCE										
Ceiling	0.8	0.8	0.8	0.7	0.7	0.7	0.5	0.5	0.5	0
Walls	0.7	0.5	0.3	0.7	0.5	0.3	0.7	0.5	0.3	0
Working plane	0.2	0.2	0.2	0.2	0.2	0.2	0.2	0.2	0.2	0
ROOM INDEX	UTILIZATION FACTORS (PERCENT) $k(RI) \times RCR = 5$									
k = 0.60	57	46	39	56	45	38	55	45	38	32
0.80	68	56	49	66	55	48	65	55	48	41
1.00	76	65	58	75	65	58	73	66	57	50
1.25	84	73	66	82	72	66	79	71	65	58
1.50	89	79	72	87	78	72	84	76	70	63
2.00	96	87	81	94	86	80	90	84	79	71
2.50	99	92	86	97	91	85	94	88	83	75
3.00	103	96	91	101	95	90	97	92	88	79
4.00	107	101	97	104	100	96	100	96	93	84
5.00	109	105	101	107	103	99	102	99	96	87
ROOM INDEX	UF(total)									Direct
According to DIN EN 13032-2 2004			Suspended				SHRNOM = 1.25			

C Range: 0 - 360DEG
 C Interval: 22.5DEG
 Test Speed: HIGH
 Temperature:25.3DEG
 Operators:DAMIN
 Test Date:2018-08-29

γ Range: 0 - 180DEG
 γ Interval: 1.0DEG
 Test System:EVERFINE GO-2000B_V1 SYSTEM V2.0.361
 Humidity:65.0%
 Test Distance:6.476m [K=1.0000]
 Remarks:

ISOCANDELA DIAGRAM

NAME: SPZLHB14F130 2064	TYPE:	WEIGHT:
SPEC.:	DIM.:	SERIAL No.:1
MFR.: EVERFINE	SUR.:	Shielding Angle:

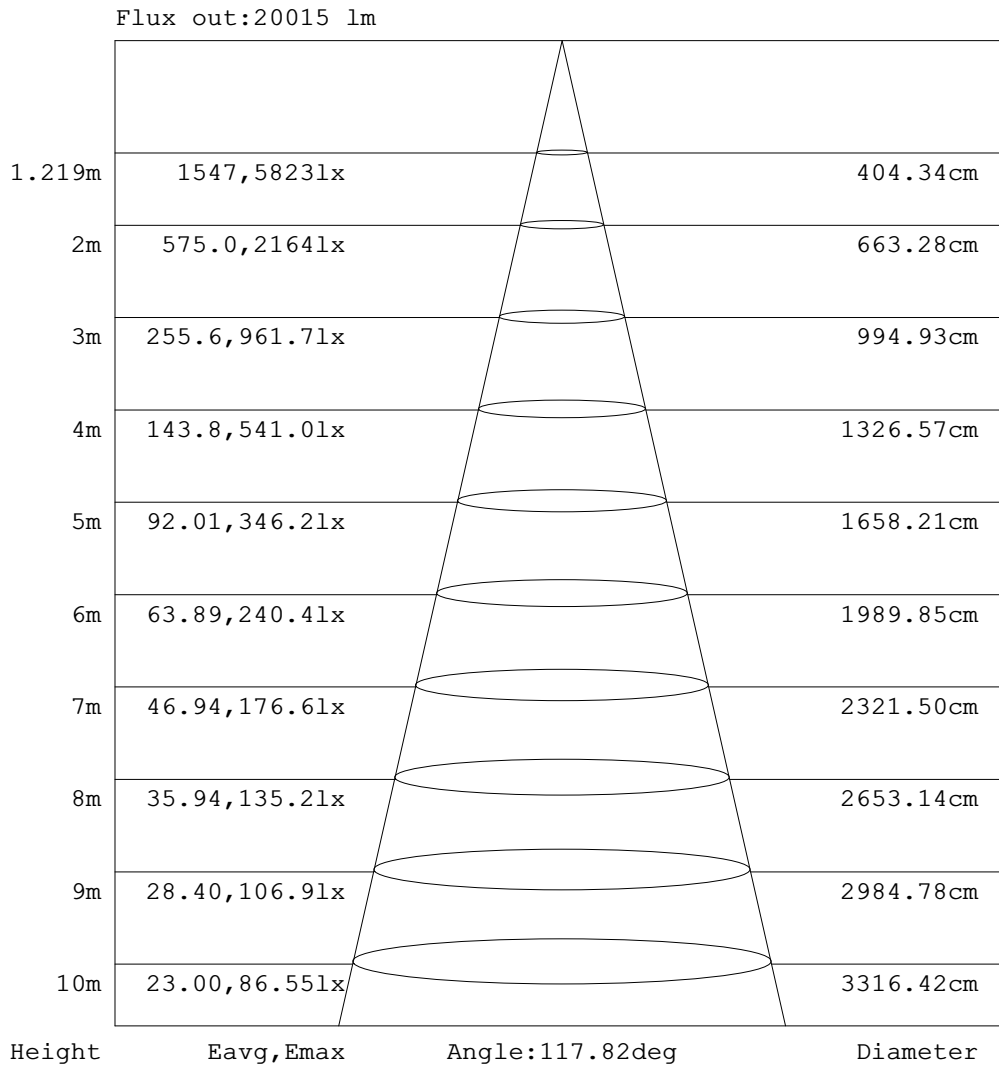


C Range: 0 - 360DEG
 C Interval: 22.5DEG
 Test Speed: HIGH
 Temperature: 25.3DEG
 Operators: DAMIN
 Test Date: 2018-08-29

γ Range: 0 - 180DEG
 γ Interval: 1.0DEG
 Test System: EVERFINE GO-2000B_V1 SYSTEM V2.0.361
 Humidity: 65.0%
 Test Distance: 6.476m [K=1.0000]
 Remarks:

AAI Figure

NAME: SPZLHB14F130 2064	TYPE:	WEIGHT:
SPEC.:	DIM.:	SERIAL No.:1
MFR.: EVERFINE	SUR.:	Shielding Angle:



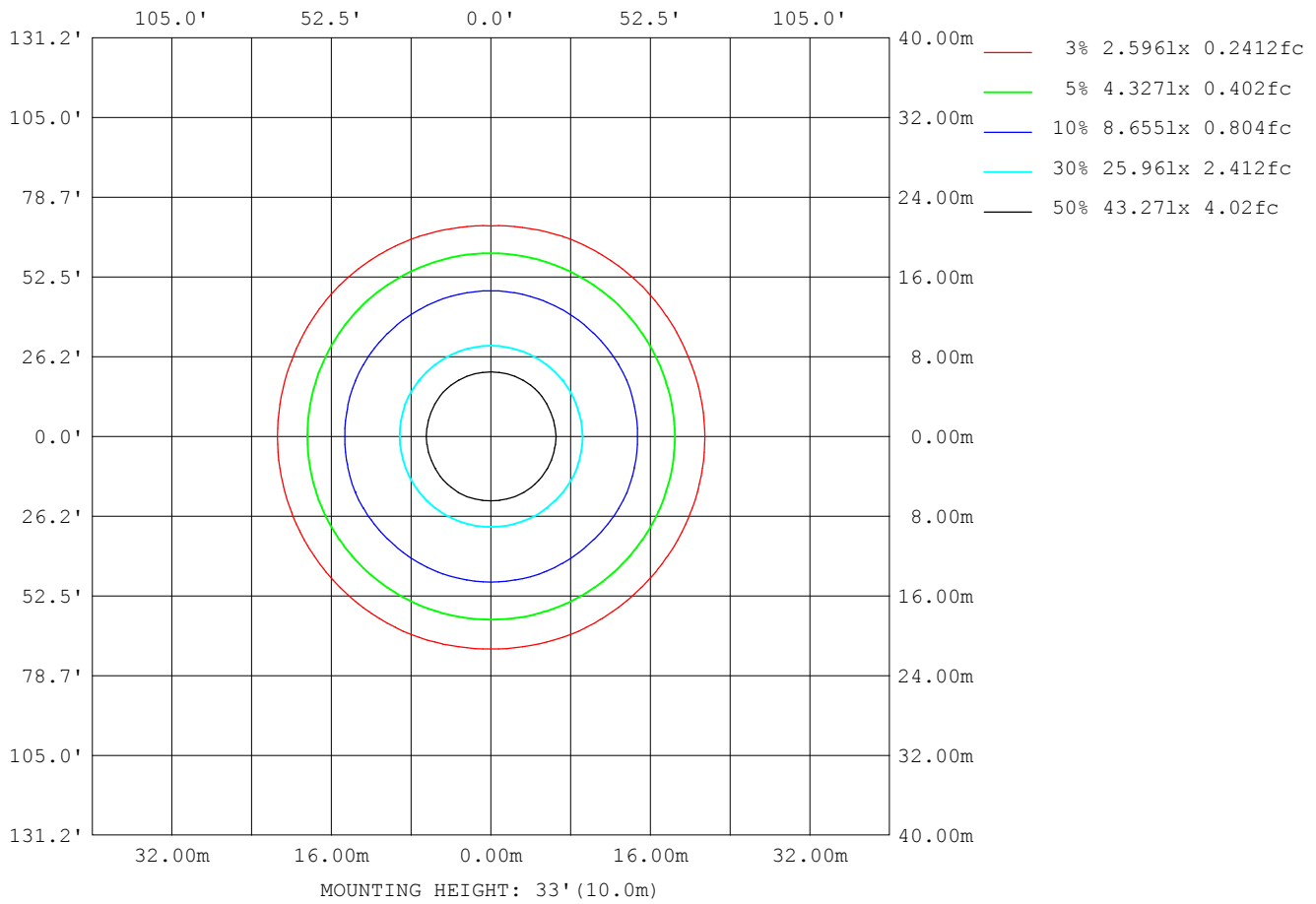
Note:The Curves indicate the illuminated area and the average illumination when the luminaire is at different distance.

C Range: 0 - 360DEG
 C Interval: 22.5DEG
 Test Speed: HIGH
 Temperature:25.3DEG
 Operators:DAMIN
 Test Date:2018-08-29

γ Range: 0 - 180DEG
 γ Interval: 1.0DEG
 Test System:EVERFINE GO-2000B_V1 SYSTEM V2.0.361
 Humidity:65.0%
 Test Distance:6.476m [K=1.0000]
 Remarks:

ISOLUX DIAGRAM

NAME: SPZLHB14F130 2064	TYPE:	WEIGHT:
SPEC.:	DIM.:	SERIAL No.: 1
MFR.: EVERFINE	SUR.:	Shielding Angle:



C Range: 0 - 360DEG
 C Interval: 22.5DEG
 Test Speed: HIGH
 Temperature: 25.3DEG
 Operators: DAMIN
 Test Date: 2018-08-29

γ Range: 0 - 180DEG
 γ Interval: 1.0DEG
 Test System: EVERFINE GO-2000B_V1 SYSTEM V2.0.361
 Humidity: 65.0%
 Test Distance: 6.476m [K=1.0000]
 Remarks:

LED Avg.L Report

NAME: SPZLHB14F130 2064	TYPE:	WEIGHT:
SPEC.:	DIM.:	SERIAL No.:1
MFR.: EVERFINE	SUR.:	Shielding Angle:

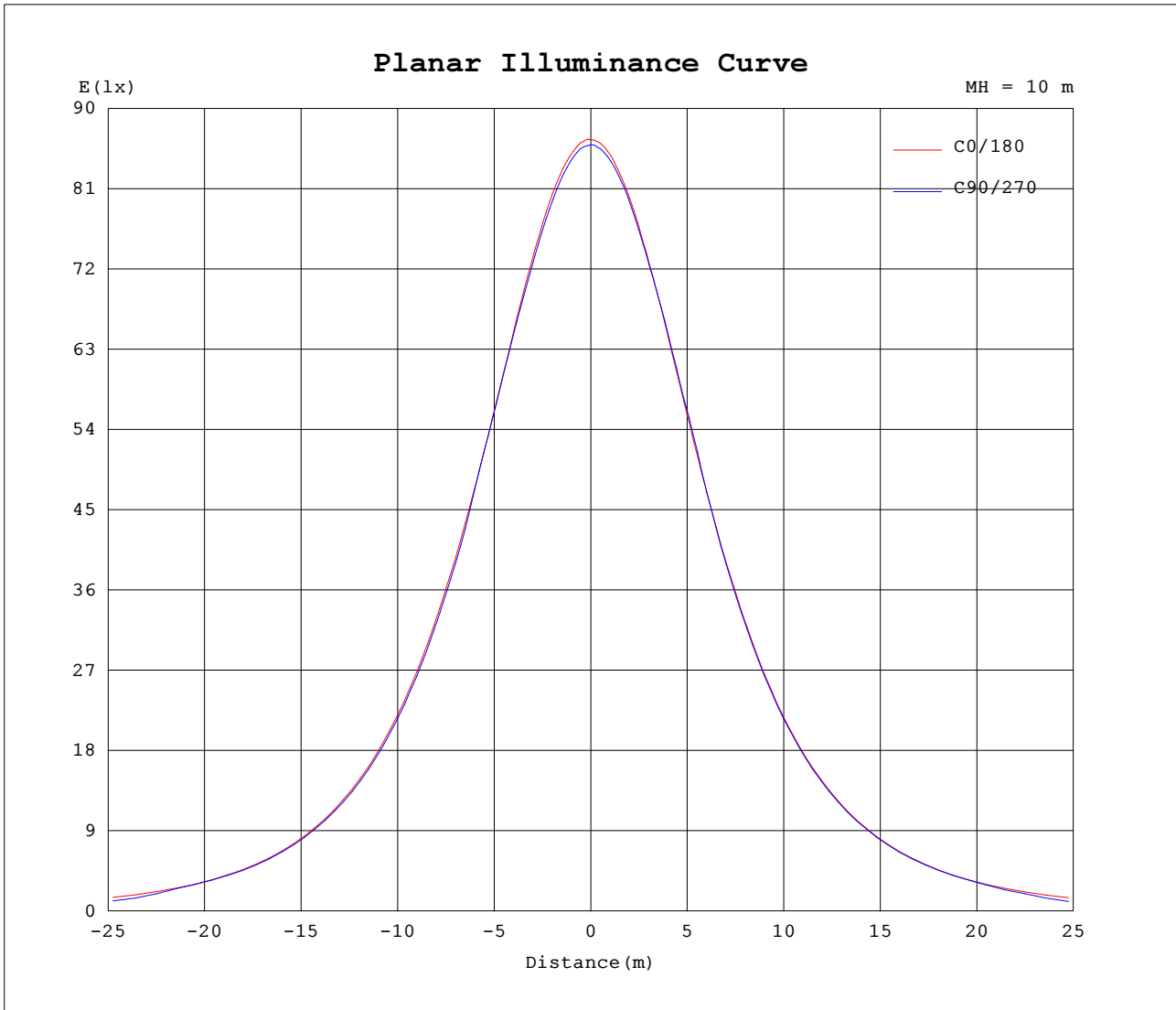
AvgL	cd/m2
L_0~180 (65) av	22569
L_0~180 (75) av	18631
L_0~180 (85) av	10135
L_90~270 (65) av	21691
L_90~270 (75) av	4381
L_90~270 (85) av	1795
L_45 (65) av	22458
L_45 (75) av	13122
L_45 (85) av	1821

Standard: GB/T 29293-2012

C Range: 0 - 360DEG
 C Interval: 22.5DEG
 Test Speed: HIGH
 Temperature:25.3DEG
 Operators:DAMIN
 Test Date:2018-08-29

γ Range: 0 - 180DEG
 γ Interval: 1.0DEG
 Test System:EVERFINE GO-2000B_V1 SYSTEM V2.0.361
 Humidity:65.0%
 Test Distance:6.476m [K=1.0000]
 Remarks:

Planar Illuminance Curve



C Range: 0 - 360DEG
 C Interval: 22.5DEG
 Test Speed: HIGH
 Temperature: 25.3DEG
 Operators: DAMIN
 Test Date: 2018-08-29

γ Range: 0 - 180DEG
 γ Interval: 1.0DEG
 Test System: EVERFINE GO-2000B_V1 SYSTEM V2.0.361
 Humidity: 65.0%
 Test Distance: 6.476m [K=1.0000]
 Remarks:

LUMINOUS DISTRIBUTION INTENSITY DATA

NAME: SPZLHB14F130 2064	TYPE:	WEIGHT:
SPEC.:	DIM.:	SERIAL No.:1
MFR.: EVERFINE	SUR.:	Shielding Angle:

Table--1 UNIT: cd

C (DEG) \ γ (DEG)	0	22.5	45	67.5	90	112.5	135	157.5	180	202.5	225	247.5	270	292.5	315	337.5			
0	8655	8635	8615	8603	8595	8583	8578	8573	8655	8635	8615	8603	8595	8583	8578	8573			
5	8629	8602	8587	8575	8564	8554	8546	8536	8619	8594	8585	8571	8562	8559	8554	8545			
10	8548	8524	8495	8486	8470	8463	8455	8446	8525	8497	8491	8478	8479	8467	8467	8465			
15	8403	8382	8355	8345	8329	8314	8299	8292	8360	8345	8341	8331	8330	8321	8321	8314			
20	8197	8173	8149	8154	8148	8119	8088	8083	8156	8126	8131	8146	8163	8141	8113	8113			
25	7935	7907	7899	7935	7913	7902	7830	7811	7880	7852	7884	7916	7909	7912	7878	7846			
30	7608	7580	7626	7632	7613	7579	7531	7477	7542	7526	7587	7604	7569	7604	7586	7517			
35	7213	7195	7229	7133	7106	7119	7166	7087	7139	7137	7227	7109	7103	7111	7202	7130			
40	6751	6754	6722	6661	6636	6633	6747	6645	6685	6709	6693	6630	6633	6624	6693	6694			
45	6226	6292	6151	6135	6112	6110	6103	6151	6157	6234	6140	6100	6101	6093	6123	6219			
50	5633	5712	5557	5544	5523	5528	5520	5624	5567	5635	5551	5515	5517	5500	5523	5641			
55	4970	5074	4895	4898	4878	4883	4873	4980	4916	4996	4897	4866	4873	4855	4872	5034			
60	4243	4225	4179	4189	4171	4179	4174	4259	4204	4192	4198	4165	4167	4152	4161	4192			
65	3455	3440	3409	3427	3387	3429	3420	3410	3413	3408	3442	3379	3213	3378	3397	3390			
70	2598	2596	2602	1874	1764	2004	2625	2585	2577	2576	2634	1770	1649	1783	2593	2542			
75	1734	1739	1185	567	380	759	1351	1758	1738	1746	1169	573	437	566	1186	1697			
80	938	777	123	94.6	95.0	93.5	218	987	951	876	204	90.2	91.9	90.2	198	899			
85	307	50.1	56.0	58.0	57.1	60.0	58.7	83.5	329	82.0	58.1	56.5	55.5	55.4	55.7	70.3			
90	10.4	9.70	8.53	7.90	7.34	9.60	10.1	11.5	14.8	14.4	13.2	11.2	10.4	10.5	11.5	12.9			
95	13.5	12.9	11.3	9.56	9.08	10.1	12.3	14.3	18.6	17.9	15.6	13.5	12.3	13.0	14.7	16.3			
100	16.8	16.1	15.0	13.2	12.6	13.8	16.1	17.6	22.6	21.8	20.0	17.7	16.4	17.1	18.7	19.9			
105	19.9	19.2	18.1	16.9	16.5	17.6	19.3	21.0	26.3	25.5	23.8	22.0	20.7	21.1	22.1	23.5			
110	22.8	22.3	20.8	19.7	19.6	20.4	22.4	24.3	29.8	29.2	27.1	25.3	24.2	24.3	25.4	26.9			
115	25.6	25.2	23.9	22.4	22.3	23.4	25.7	27.4	33.1	32.5	30.7	28.6	27.3	27.6	28.8	30.1			
120	28.3	27.9	26.9	25.6	25.4	26.6	28.7	30.3	36.2	35.4	34.0	32.1	30.9	31.0	32.1	33.0			
125	31.0	30.6	29.5	28.6	28.7	29.6	31.1	32.8	39.1	38.0	36.4	35.3	34.1	34.2	34.7	35.8			
130	33.2	33.0	32.0	31.3	31.6	31.9	33.2	35.1	41.4	40.2	38.4	37.7	37.3	36.9	37.3	38.1			
135	35.1	34.9	34.1	33.4	33.6	33.7	35.2	37.3	42.9	41.9	40.1	39.1	39.2	38.8	39.1	39.7			
140	36.7	36.4	35.6	35.2	35.2	35.4	37.4	39.2	43.9	43.1	41.5	40.4	40.5	40.3	40.2	40.8			
145	38.4	37.8	37.1	36.7	36.9	37.4	39.7	41.2	44.5	44.2	42.9	41.2	41.3	41.0	41.0	41.5			
150	40.1	39.4	38.7	38.4	38.5	39.9	42.2	43.2	45.5	45.6	44.6	42.6	41.9	42.0	41.8	42.5			
155	41.7	41.0	40.3	40.1	40.3	42.5	44.8	44.9	45.8	46.7	46.8	44.8	43.1	43.1	43.0	43.6			
160	43.0	42.7	42.1	41.8	42.8	45.7	47.0	45.8	46.3	47.3	48.8	47.4	44.7	44.4	44.6	45.1			
165	44.4	44.2	44.2	44.0	46.2	48.7	48.1	46.6	46.9	47.6	49.4	49.8	47.5	46.1	46.0	46.2			
170	45.7	45.7	46.0	46.4	49.1	50.4	48.5	47.5	47.5	48.0	49.3	51.0	49.7	47.6	47.4	47.2			
175	47.0	47.0	47.3	48.3	50.8	50.6	48.7	48.1	48.1	48.1	49.0	51.2	51.5	49.1	48.6	48.0			
180	48.0	48.0	48.3	49.8	50.9	49.8	48.8	48.4	48.2	47.9	48.4	49.8	50.9	49.8	48.8	48.4			

C Range: 0 - 360DEG
 C Interval: 22.5DEG
 Test Speed: HIGH
 Temperature: 25.3DEG
 Operators: DAMIN
 Test Date: 2018-08-29

γ Range: 0 - 180DEG
 γ Interval: 1.0DEG
 Test System: EVERFINE GO-2000B_V1 SYSTEM V2.0.361
 Humidity: 65.0%
 Test Distance: 6.476m [K=1.0000]
 Remarks: