

Implant-One Conical Angled Abutment

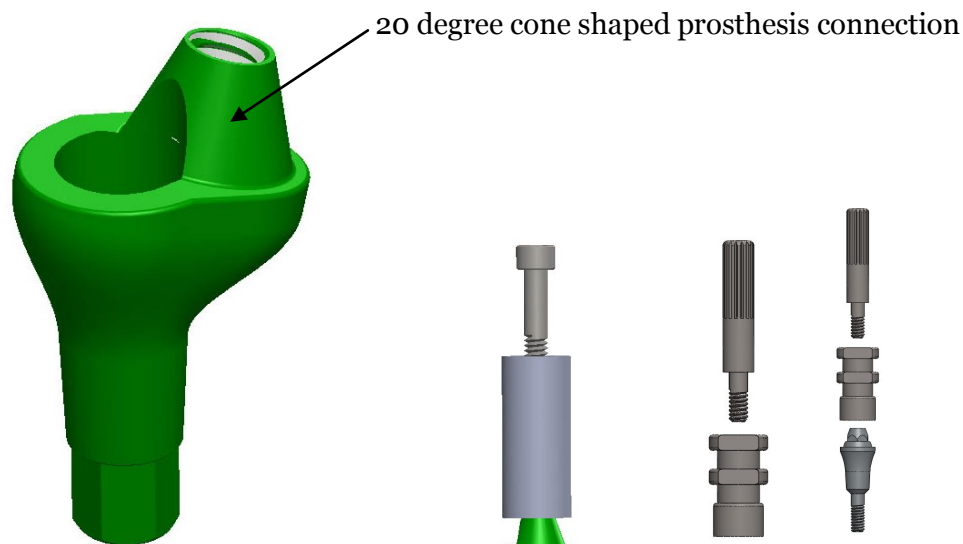
Implant-One standard conical angled abutments are used to secure screw retained prosthesis

Made of Grade 5 Titanium.

The Angled abutment is available in 3mm, and 5mm cuff heights and angles of 15 and 30 degrees.

Burn out sleeves for use in casting a bar with the mating conical shaped mating socket (supplied with abutment)

Titanium sleeve can be bonded into all zirconium, screw retained removable dentures. (optional part)



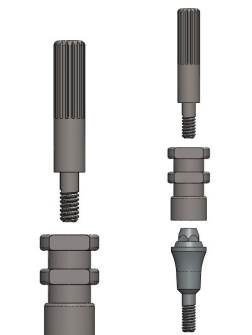
200 Series
15 Degree
IT238-30
IT238-50

100 Series
15 Degree
IT138-30
IT138-50

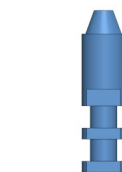
30 Degree
IT239-30
IT239-50

30 Degree
IT139-30
IT139-50

With standard burn
out sleeve



Impression coping
Open tray style only
Part no. IT3500



Analog
Part no. IT390



Healing Cap
Part no. IT341



With optional
Titanium Sleeve
Part no. IT331