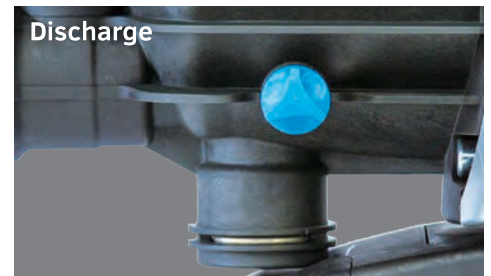
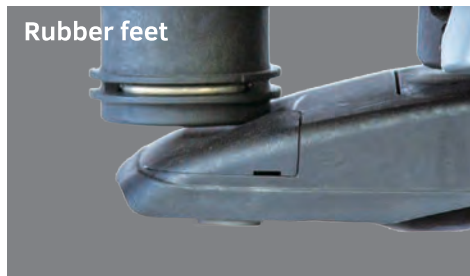
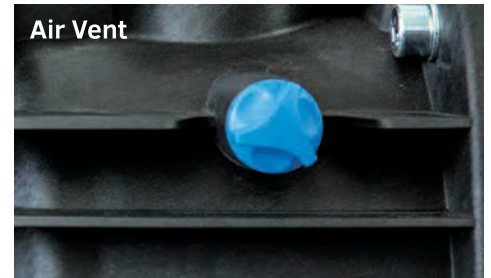
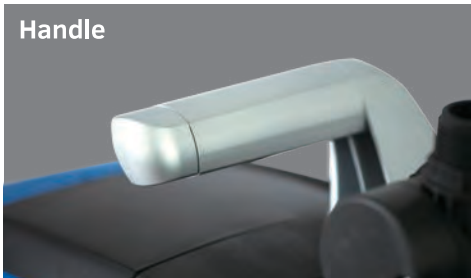


Multistage Electronic Pump M-Series



- Auto controller with loss of prime protection
- Swivel connection with quick release
- Prefilter for easy maintenance
- Integrated easily accessible non-return valve
- Water cooled motor; quieter and easier to protect from weather
- 🇮🇹 Designed in Italy



	Model	M3	M6
Electrical data	P2 Pump consumption [W]	380	560
	Voltage [V]	1 ~ 240 AC	1 ~ 240 AC
	Frequency [Hz]	50	50
	Current [A]	3.10	4.20
	Capacitor nF	16	12.5
	Capacitor Vc	450	450
Hydraulic data	Flow rate max. [l/m]	60	80
	Max. Pressure [Bar]	3.2	4.0
	Max. Head [m]	32	40
	Start pressure [bar]	2.2	2.2
	Stop pressure [bar]	3.2	4.0
	Max.suction depth [m]	-	-
	Max. working pressure [bar]	6	6
Range of use/materials	Length of Power Cable [m]	1.5	1.5
	Cable	H07 RNF	H07 RNF
	Pump International protection	IPX4	IPX4
	Insulation Class	F	F
	Pressure measure	Led indicator	Led indicator
	Liquid range Temperature [°C]	0 °C / +35 °C	0 °C / +35 °C
Dimensions / weight	Max. Ambient Temperature [°C]	+40 °C	+40 °C
	Max. Particle Dimension	Clean Water	Clean Water
	L x W x H [mm]	500 x 230 x 341	500 x 230 x 341
	Ldm [mm]	312	312
	Hda [mm]	208	208
	Wam [mm]	103	103
	Box Dimensions l x w x h [cm]	54 x 26 x 38.5	54 x 26 x 38.5
	Net/Gross Weight [kg]	10.15 / 12.1	10.95 / 12.9
Quantity for pallet [no.]	12	12	

