



SMARTOP ®  
by Leisure Concepts



## Smartop Succeeds Where Other Covers Fail

For more than fifty years, spa owners worldwide have desired an alternative to the ever failing vinyl cover that becomes water-logged, develops mold and mildew and loses its efficiency and ability to hold in heat, resulting in higher energy costs.

Smartop is the only solution that gives you a hassle and maintenance-free environment, allowing you to relax and enjoy the spa ownership experience you expect and deserve.

Opening and closing Smartop is effortless and easy, while the chic and stylish design is odor, mold, and mildew free! Zero maintenance, combined with a higher heat retention, make Smartop's performance and long list of benefits, unmatched by any other cover.

Learn why Smartop is the spa cover YOU expected and the spa cover YOU deserve.



### The Spa Cover You Deserve

- No maintenance
- Zero water absorption
- Dual integrated cover lift system
- Durable and strong
- Exclusive heat retention system
- Safe and secure
- Attractive woven PVC skirt





### Non-Water Absorbing Foam

Smartop is insulated with specially formulated, Owens Corning closed cell, waterproof foam, making it impermeable to moisture and water weight gain, thereby preventing sagging and water puddling on the cover. Smartop is sanitary and clean and will not develop mold, mildew or odor.

### DecoShield Protective Overlay

DecoShield is an elegant, textured polymer overlay that provides style AND protection to Smartop's rigid exterior shell. This durable, weather-resistant material is designed to withstand extreme heat and cold, snow, ice, pounding hail and intense UV rays.

### Black Anodized Aluminum Trim

The durable, rustproof anodized aluminum trim adds the finishing touch to the aesthetically pleasing Smartop.

### Automatic Snow and Ice Melt

Using heat transfer from the spa's water, Smartop's polymer panels automatically melt snow and ice off the Smartop ensuring your spa is easily accessible throughout the winter months.

### Maintenance-Free

The durable, polymer panels and protective DecoShield overlay makes cleaning quick and easy using common dish soap and water. Smartop does not require the use of costly conditioners, nor is there any required maintenance to the foam, making Smartop effortless and easy to own.



### SmartSeal

A layer of compression foam is applied to the underside of the cover, creating a tight seal that prevents heat from escaping the spa.



## Performance Defined



### **Durable and Strong**

Interlocking polymer panels, combined with anodized aluminum reinforcement channels allow Smartop to support over 1,000 pounds.

### **Cost and Energy Savings**

Smartop's heat retention capability (often referred to as R-value) has been tested against the highest-rated vinyl covers on the market proving equal in performance. However, unlike traditional vinyl covers, Smartop's R-value remains constant throughout its lifespan due to the closed cell insulating foam never absorbing moisture or water. This results in superior heat retention and cost savings. (Learn more about Smartop's high heat retention capability later in this brochure.)

### **Dual Cover Lift System**

The patented EAS Lift and Assist component, combined with a rear hydraulic cover lift, makes opening and closing Smartop feather-light and fingertip easy.

### **Safe and Secure**

Stainless steel lockdown cables and a combination padlock prevent unauthorized use of the spa keeping children and unsupervised users safe.

### **Repairable and Replaceable Components**

In the unlikely event Smartop becomes damaged, every component is repairable or replaceable. NEVER deal with the hassle of a costly cover replacement again.



UL certified to ASTM F1346-91 (Reapproved 2010)  
Standard for Manual Safety Covers

## Smartop Upright 3.0

### Privacy and Wind Block Built-In

The Smartop Upright creates a private, peaceful hot tub experience with its functional space saving design. Feather-light opening and closing, durability and a chic, sophisticated appearance make Smartop the perfect way to cover your spa. *Patent No. 8,813,275 | 9,689,172*



As little as 6 inches is required behind the spa and 7 inches on each side

# Smartop Vanish XL

## Panoramic View Included

Experience the world around you with the Smartop Vanish XL. Fingertip-light and velvet smooth opening and closing, make placing Smartop in a low position behind the spa effortless, creating a 360-degree view for you to enjoy during your hot tub experience.

*Patent No. 9,574,361 | 9,689,172*



A minimum of 25 inches is required behind the spa and 7 inches on each side







# SMARTOP

Smartop transforms your spa and its surroundings, into an eye-catching, sophisticated space. The contemporary, alluring design coupled with performance and ease of ownership make Smartop the new standard for spa covers.

Smartop spa covers are available in a variety of models to meet your specific needs. Whether it's a small two-person spa or a large twenty-foot swim spa, aboveground or recessed, Smartop can be manufactured to fit most spas with a flat top surface. If you have a spa with a unique shape, size or installation requirements, let us know and we will work to design and build a Smartop to meet your situation and needs.

**Proudly made in the**



---

[www.SmartopSpaCover.com](http://www.SmartopSpaCover.com)

# SMARTOP

---



Shown above is the Smartop Swim Spa Hybrid model.  
(one Upright, one Vanish XL)

---

[www.SmartopSpaCover.com](http://www.SmartopSpaCover.com)

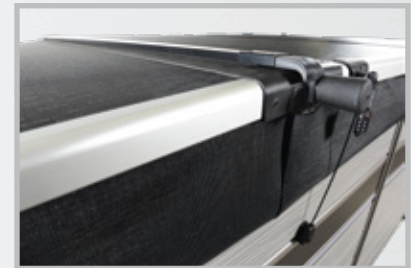
# Smartop Swim Spa

## Easy Handling - On and Off

Available for spas up to twenty-feet, Smartop Swim Spa makes easy work of opening and closing the covers required for these larger spas. Available as an Upright, Vanish XL or Hybrid model (one Upright, one Vanish XL). *Patent No. 8,813,275 | 9,574,361 | 9,689,172*



The exclusive center bridge design where the two covers meet, creates a tight seal that holds the heat in the swim spa while preventing dirt and debris from entering the swim spa.





Every Smartop spa cover is custom made 100% in the USA per your design selections. Unique cover dimensions, corner radius size, plus color options result in a spa cover that fits your spa properly and enhances the look of your spa and its surroundings.





*Deco*  
shield

## Choose From Six Elegant Color Options



Black



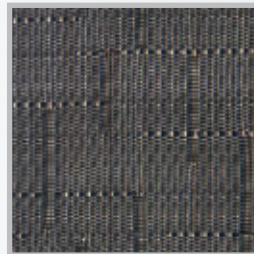
Bamboo



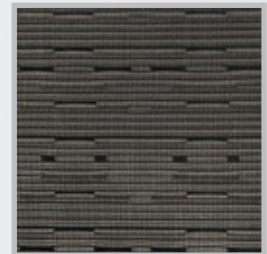
Brown Tweed



Grey Tweed



Portobello



Pepper Grey

SMARTOP 

---

[www.SmartopSpaCover.com](http://www.SmartopSpaCover.com)

## How Well Does Smartop Retain Heat in the Spa? (R-value)

One of the key roles a spa cover plays is prevention of heat loss which allows the spa to be hot and ready to use at all times while minimizing energy usage. The vinyl cover has consistently proven to become moisture and waterlogged, reducing its ability to prevent heat from escaping the spa. Studies show when insulation absorbs just twenty-percent moisture, its R-value can decrease by more than fifty-percent.\*

Smartop's heat retention has proven equal to the leading vinyl covers in the industry. The difference however, is Smartop's ability to maintain a consistent R-value throughout its lifespan as a result of the specially formulated Owens Corning closed-cell insulating foam that is moisture and water resistant and guaranteed to maintain 90% of its R-value. Traditional vinyl covers simply cannot match Smartop's ability to hold heat in the spa.

*For extremely cold climates where maximum heat retention is of the highest priority - SmartShield 800 is the answer! Applied to the underside of the Smartop, this dense, soft-to-the-touch, black material has proven to increase the already energy-conscious Smartop by more than 20%.*



\*Professional Service Industries Inc., a division of construction materials testing firm Intertek.



## Smartop Cares About the Environment

More than one million traditional vinyl covers are discarded annually. Sadly, the foam insulating material used in the vinyl cover is not readily biodegradable. Research shows it takes as long as five hundred years for the foam material to decompose. Below are more concerning facts about extended polystyrene foam and its effects on Mother Earth:

- 25-35% (by volume) of landfills are comprised of polystyrene products (about 10 cu ft. of volume taken up for every 10,000 cups in landfill)
- 80% of extended polystyrene foam ends up in landfills, and much of the remaining 20% in waterways (as per U.S. Environmental Protection Agency: 3 million tons of polystyrene produced in the U.S per year; 2.3 million tons end up in landfills, with much of the remainder finding its way into waterways)
- 18% of total coastal clean-up costs are attributed to polystyrene products

Smartop is the only spa cover designed and built as a non-disposable cover – one that will never negatively impact the environment - making Smartop not just a smart choice, but the responsible choice as well.

SMARTOP ®



### **3 Year Manufacturer Backed Performance Assurance Guarantee**

Each cover is manufactured with superior materials and craftsmanship and meets or exceeds all ASTM safety standards for UL classification resulting in a product that is warrantied against defects in materials and workmanship. If your Smartop is found to be unserviceable due to defects in materials or workmanship within three years from date of purchase, replacement parts OR a replacement cover will be provided.

### **About Leisure Concepts**

Leisure Concepts has been providing hundreds of thousands of satisfied homeowners quality products for over 20 years, making the company the #1 spa accessory manufacturer in the world. All manufacturing is completed in the USA in our 100,000 sq. ft. state-of-the-art facility allowing the strictest quality control and on-time delivery. Our goal is to provide quality products that offer many years of trouble-free ownership and 100% customer satisfaction.



5342 North Florida Street  
Spokane, WA 99217  
[www.SmartopSpaCover.com](http://www.SmartopSpaCover.com)