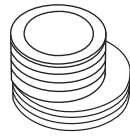
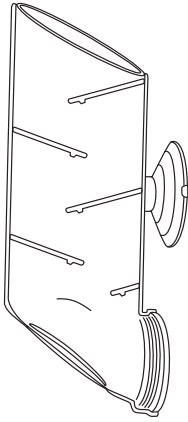
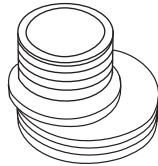


Included in Clean Way™ Fuel Fill Side Fill Kit

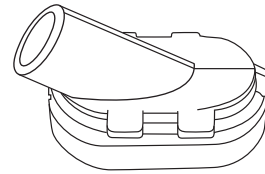
12-inch
Baffle



1 1/2" Finned Adapter



1 3/4" Finned Adapter



Fuel Nozzle Receiver

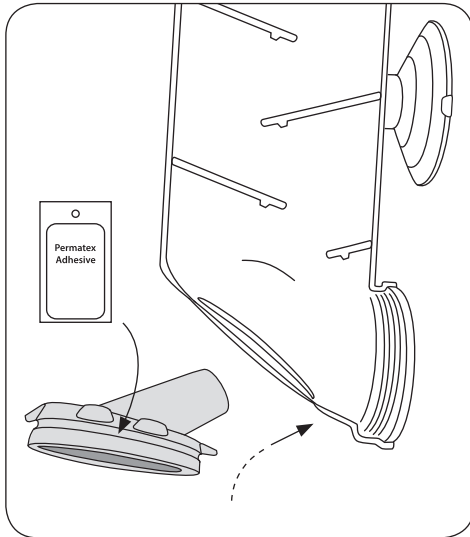


Alcohol
Towelette

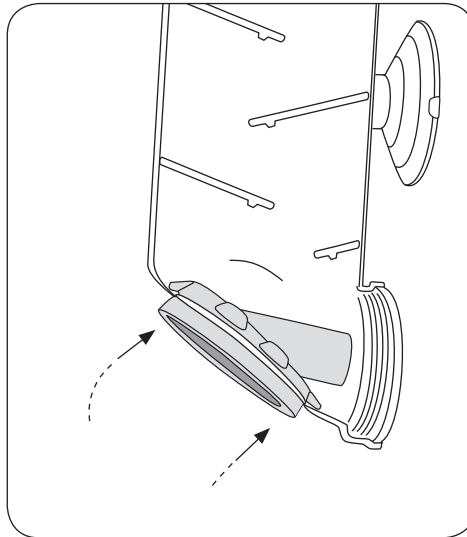


1 Packet of
Permatex Adhesive

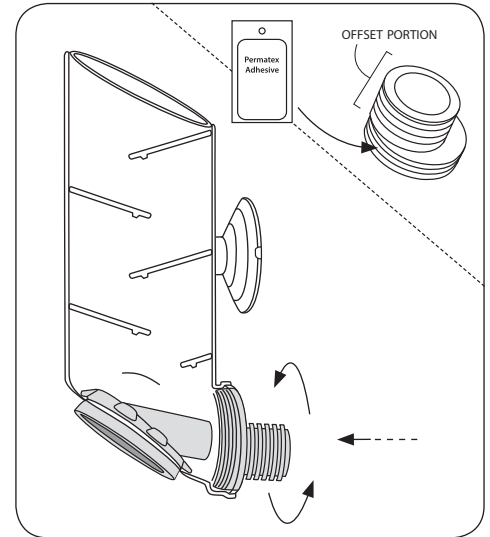
Clean Way™ Fuel Fill Side Fill Usage



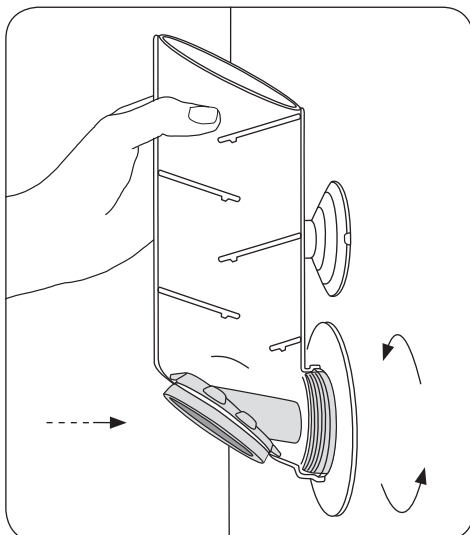
1. Apply a thin coat of adhesive to the deep groove of Fuel Nozzle Receiver that will lock into the cutout of the baffle. Insert the receiver by inserting the bottom tab first, with the nozzle tube pointed toward the finned adapter opening, followed by the top tab. Both tabs should align with the center seam of the baffle.



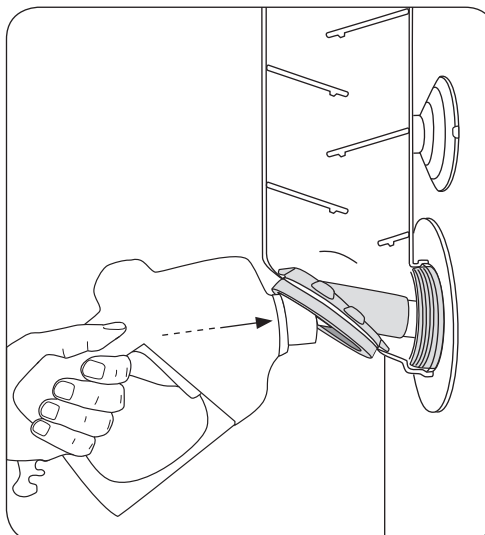
2. Once the bottom and top tabs are properly aligned and pressed into place, squeeze the sides, one at a time, to insert the two locking side tabs into place on each side of the receiver.



3. Choose the Finned Adapter that fits your boat. Apply a thin coating of sealant to the threads. Do not over apply. Wipe off any excess with the enclosed alcohol towelette. Force the adapter into the baffle. Give it a few turns to seat it, **taking care to tighten with the offset on the bottom for clear drainage.** Let sit for 12 to 15 hours before use.



4. Push Clean Way into boat deck fill and twist to seal tightly. Secure suction cup to boat for stability.



5. Insert nozzle. Before fueling, be sure the nozzle is inserted as far into the receiver as possible, making tight contact with the adapter. To remove suction cup after refueling, lift the small tab.

Clean Way™ Fuel Fill Side Fill Kit is currently only for gasoline powered users. It has been designed for 90° vertical fuel receivers only.

Questions? Contact us at 772.460.6670 or email cleanwayfuelfill@comcast.net

Visit us at cleanwayfuelfill.com



Warning. Fuel and its vapors are extremely flammable and explosive. Fill fuel tank outdoors, away from open flames, sparks, heat, and other ignition sources. Static electricity can ignite fuel and its vapors. Properly ground fuel nozzle on metallic deck fills.

If fuel spills, clean up spill before starting engine. Some droplets of fuel may remain in your Clean Way device after use. Do not store your Clean Way in a plastic bag or other sealed container as it may prevent fuel from evaporating.

Store your Clean Way Fuel Fill above deck in a well-ventilated area.