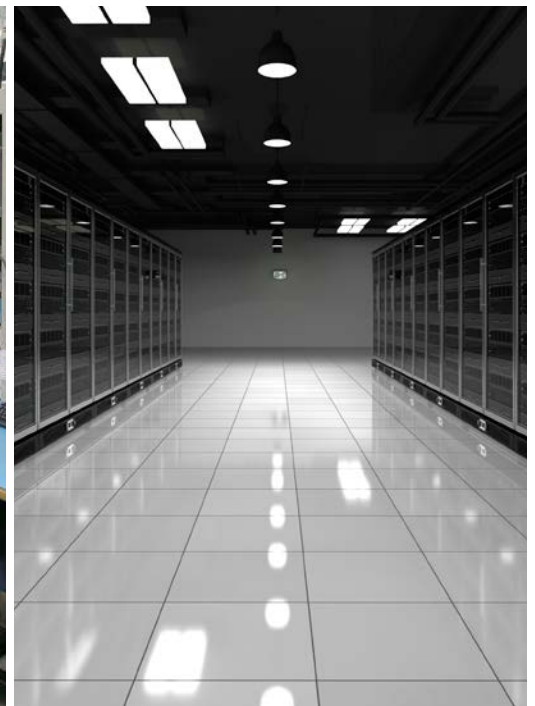




# **INSULATOR™**

## **STATIC DISSIPATIVE FLOOR FINISH**



### ***Insulator is for use on static dissipative and conductive tile.***

Insulator™ Static Dissipative Floor finish utilizes a state of the art, extensively researched and tested “Dissipative Polymer Technology” that is designed for conductive and static dissipative floor care programs.



**Cleaning Innovations That Matter.**

# INSULATOR™

## STATIC DISSIPATIVE FLOOR FINISH

### For use on Static Dissipative & Conductive Tile

- Low Maintenance/High Gloss
- Meets **ASTM F150** for static control flooring
- Meets **Mil-STD-3010B** for electrostatic decay
- Meets **ANSI/ESD STM97.2** for voltage in combination with a person through a floor system
- Betco® Insulator is compliant for ESD flooring as follows as illustrated in Table 1





Available In:  
Case/4 – 1 Gallon (3.78 L):  
Item #63804-00

**TABLE 1 - ESD FLOOR TESTING**

ESD TEST/DESCRIPTION	CONDUCTIVE TILE WITH EPOXY ADHESIVE	CONDUCTIVE TILE WITH LATEX ADHESIVE	STATIC DISSIPATIVE TILE WITH LATEX ADHESIVE	STATIC DISSIPATIVE TILE WITH EPOXY ADHESIVE
<b>ASTM F150</b> Resistance to a Groundable Point (RTG) at 50% Relative Humidity	Conductive	Conductive	Static Dissipative	Static Dissipative
<b>ASTM F150</b> Point to Point Resistance (RTT) at 50% Relative Humidity	Conductive	Static Dissipative	Static Dissipative	Static Dissipative
<b>MIL-STD-3010B</b> Electrostatic Decay at 12% Relative Humidity	<0.2 seconds	<0.2 seconds	<0.2 seconds	<0.2 seconds
<b>ANSI/ESD STM97.2</b> Voltage in Combination with a Person at 12% Relative Humidity	<+/- 100 volts	<+/- 100 volts	<+/- 100 volts	<+/- 100 volts

Insulator on either static dissipative tile or conductive tile passes ASTM F150 for static control flooring, MIL-STD-3010B for electrostatic decay and ANSI/ESD STM97.2 for voltage in combination with a person through a floor system.

## INSULATOR FLOOR CARE PROGRAM

PRODUCT	SKU #	PRODUCT DESCRIPTION	MARKET OPPORTUNITY
	60812-00 60804-00	<b>Easy Task™ - Thermoplastic Spray Buff</b> <ul style="list-style-type: none"> <li>• Effective repair of floor finish</li> <li>• Versatile - The perfect product for use with conventional equipment</li> <li>• Provides excellent lubricity to pad surface for a higher shine</li> </ul>	Ideal for facilities that house high tech electronics such as imaging equipment, computer electronics, diagnostic equipment and robotics in Healthcare and Electronics Manufacturing Industries.
	15004-00 15047-00 15048-00	<b>Top Flite™ - All Purpose Cleaner Concentrate</b> <ul style="list-style-type: none"> <li>• Clean/deodorize hard washable surfaces</li> <li>• Also suitable as a part of a scrub and recoat program</li> <li>• Extremely effective in hard water and will not streak or dull surfaces</li> </ul>	Ideal for facilities that house high tech electronics such as imaging equipment, computer electronics, diagnostic equipment and robotics in Healthcare and Electronics Manufacturing Industries.



Cleaning Innovations That Matter.

888-GO BETCO | betco.com

©2013 Betco Corporation  
All Rights Reserved.

Worldwide Headquarters  
1001 Brown Avenue  
Toledo, Ohio 43607-0127

Item #92178-92

