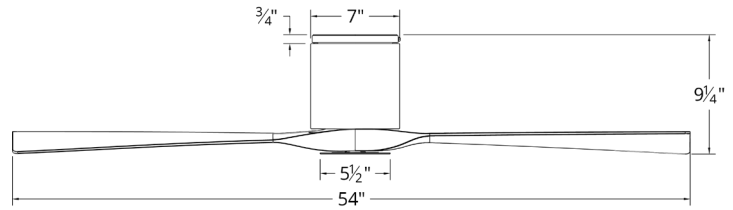


# AVIATOR 54" Flush Mounted Fan

FH-W1811-54

## MODERN FORMS SMART FANS



### PRODUCT DESCRIPTION

Inspired by the golden age of flying, this smart fan takes technology to the next level. Pair it with the exclusive Modern Forms app to save on energy costs and intuitively create schedules that adapt to your behavior. Two simulated wood finishes contrast with the matte black or graphite housings for an understated look in interior or exterior spaces. Available option LED light kit sold separately.

### SPECIFICATIONS

**Construction:** Aluminum  
**Blade:** 13° Pitch, 54" sweep, ABS  
**Lead Wire:** 8"  
**Hanging Weight:** 12.5 lbs  
**Total Power:** 27W  
**Standards:** ETL/cETL Wet Location listed

### FEATURES

- 6 fan speeds through both Summer and Winter Modes
- Silent DC motor
- Optional LED light kit sold separately
- Includes RF wall control
- Additional RF wall control for 3, 4-way control sold separately
- Optional RF remote control with wall cradle sold separately
- Compatible with Modern Forms app

### WIRELESS PERFORMANCE

**RF Pairing Distance:** Up to 30 ft from fan  
**Wi-Fi Range:** Up to 150 ft\*

### ESTIMATED AIR PERFORMANCE

**Airflow:** 6744 cubic ft per minute on high  
**Power:** 27 watts on high  
**Airflow Efficiency:** 246 cubic ft per minute per watt  
**RPM:** 170 RPMs on high

### ORDER NUMBER

Model	Housing		Blade	
FH-W1811-54	<b>GH</b>	<i>Graphite</i>	<b>WG</b>	<i>Weathered Gray</i>
	<b>MB</b>	<i>Matte Black</i>	<b>DK</b>	<i>Distressed Koa</i>

### OPTIONAL LUMINAIRE (Sold Separately)

Model	Finish	
F-1811-LED	<b>GH</b>	<i>Graphite</i>
	<b>MB</b>	<i>Matte Black</i>

Example: FH-W1811-54-GH/DK

\*Results may vary based on application and surroundings.



modernforms.com  
 Phone (866) 810.6615  
 Fax (800) 526.2585

Headquarters/Eastern Distribution Center  
 44 Harbor Park Drive  
 Port Washington, NY 11050

Central Distribution Center  
 1600 Distribution Ct  
 Lithia Springs, GA 30122




Western Distribution Center  
 1750 Archibald Avenue  
 Ontario, CA 91760

# AVIATOR 54" Flush Mounted Fan

FH-W1811-54

## MODERN FORMS SMART FANS

### OPTIONAL ACCESSORIES

<b>RF Wall Control</b> 	<b>F-WC</b>	<b>WT</b> White	Control fan speed, light brightness and switch between Summer and Winter Modes from up to 30 ft away. One RF Wall control comes standard with each Modern Forms Smart fan.
<b>RF Remote Control</b> 	<b>F-RC</b>	<b>WT</b> White	Sold separately. Control fan speed and light brightness, and switch between Summer and Winter Modes from up to 50 ft away. Includes easy-to-install cradle and batteries.
<b>Wi-Fi Touch Panel Wall Control</b> 	<b>F-TS</b>	<b>BK</b> Black <b>WT</b> White	Sold separately. Android tablet comes pre-loaded with Modern Forms app, Wi-Fi range up to 150 ft from router. Results may vary based on application/surroundings.

Examples: RF Wall Control - **F-WC-WT**, RF Remote Control - **F-RC-WT**, Wi-Fi Touch Panel - **F-TS-WT**

modernforms.com  
Phone (866) 810.6615  
Fax (800) 526.2585

Headquarters/Eastern Distribution Center  
44 Harbor Park Drive  
Port Washington, NY 11050

Central Distribution Center  
1600 Distribution Ct  
Lithia Springs, GA 30122

Western Distribution Center  
1750 Archibald Avenue  
Ontario, CA 91760