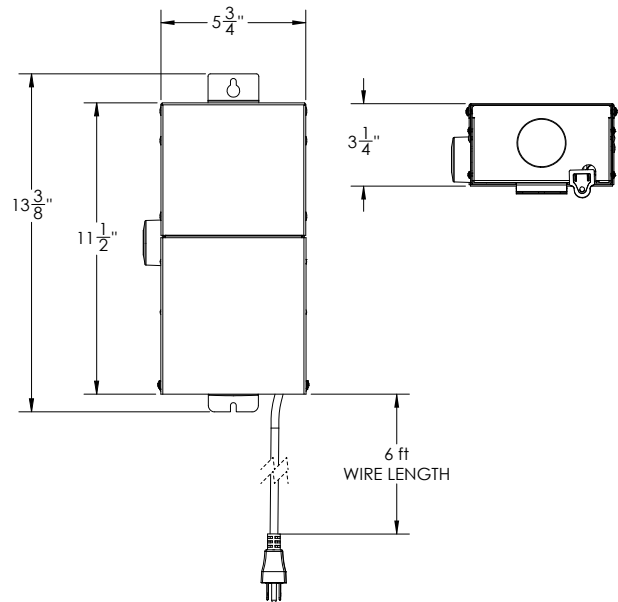


9 SERIES SMART TRANSFORMER (WiFi Enabled)



DIMENSIONS



This Smart Transformer works exclusively with our 9 Series WiFi enabled line of landscape lighting and the Haven smartphone app. It may be mounted indoor or outdoor for easy installation. The transformer plugs into a regular outdoor wall outlet and contains a toroidal core that offers cooler and quieter performance. This unit is easy to hide and packs 150W or 300W of lighting power.

TECHNICAL SPECIFICATIONS

POWER INFORMATION

Voltage: 120V AC




Power Options: 150W, 300W

Output Voltage: 15V AC

Note: This transformer works exclusively with our 9 Series WiFi Enabled Line of lights.

Always disconnect the transformer from the electrical outlet before working on or installing this unit and/or any part of the lighting system.

FEATURES

 Weatherproof	 Smartphone Control	 WiFi Enabled
---	---	---

MODEL NUMBER	FINISH	POWER
9TR150W	Stainless Steel	150W
9TR300W	Stainless Steel	300W