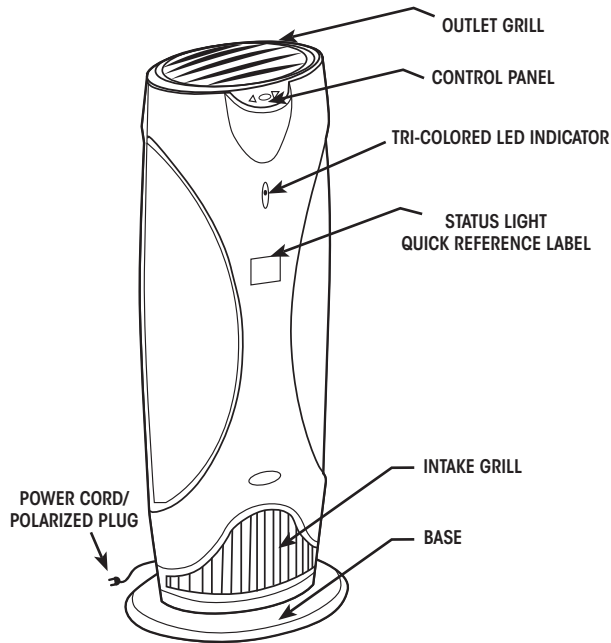


## THE RXAIR® 400 AIR PURIFIER

Thank you for purchasing the RxAir®400 Air Purifier. Use this product with confidence that it is engineered to efficiently kill viruses, bacteria and fungi in your indoor environment. We recommend that you operate your RxAir®400 whenever the property is occupied since indoor air is constantly being contaminated from a variety of sources.

### MAJOR COMPONENTS



The RxAir®400 is a flow-through indoor air purifier system which kills over 99.9% of bacteria and viruses, as well as other contaminants that can cause allergic reactions or respiratory issues. It is appropriate for any residence or commercial establishments concerned about the health issues caused by indoor air pollution.

### BEFORE USE & PLACEMENT

Carefully remove the unit from the box, and set aside all packaging materials.

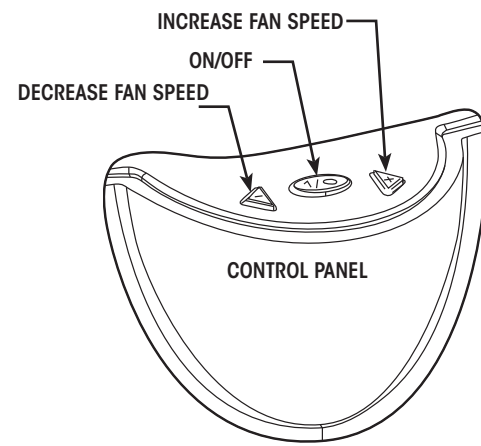
The unit should be placed in a location that pulls the contaminated air away from the living or sleeping space. For example, in a bedroom, the unit should be placed in the corner of the bedroom furthest from the head of the sleeping individual, thus pulling untreated air away from

that person. In commercial businesses, the unit should be placed in the furthest corner from the waiting area or application area. For highest performance and effectiveness, always place the unit furthest from individuals, drawing untreated air away from staff and customers.

### OPERATION OF CONTROLS

All controls for the RxAir® are located near the top of the unit.

- Center button turns unit ON and OFF. Momentarily press this button to turn unit on.
- Press again to turn the unit off.
- Arrow shaped buttons control fan speed. Press the button repeatedly to adjust fan speed to desired level. The left button decreases fan speed while the right button increases fan speed.
- When maximum or minimum speed is reached, unit beeps.
- **WARNING:** To reduce the risk of fire or electric shock, do not use this fan with any solid-state speed control device.



### CHANGING THE FUSE

Grasp the plug and remove from the receptacle or other outlet device. Do not unplug by pulling on cord.

Open fuse cover. Slide open fuse access cover on top of attachment plug towards blades or push on tabs located next to the blades. Remove fuse carefully. Push the fuse from the other side and turn fuseholder over to remove fuse up.

Risk of fire. Replace fuse only with 5 Amp, 125 Volt fuse (provided with product). Close fuse cover. Slide closed the fuse access cover on top of attachment plug or push cover closed so that all tabs latch.

### CHANGING THE CARTRIDGE

The cartridge is engineered as a sealed unit. It is not user serviceable. **NO attempt should be made to remove end caps to get inside the cartridge.** Doing so could pose a health threat and will void the limited warranty. For cartridge replacement see diagram in this pamphlet.

The cartridge should be changed when the indicator turns from **GREEN** to **AMBER** or **STEADY RED**. This occurs typically after one year of daily use. **YOU MUST UNPLUG THE UNIT FOR ONE MINUTE TO ALLOW THE UNIT TO RESET.**

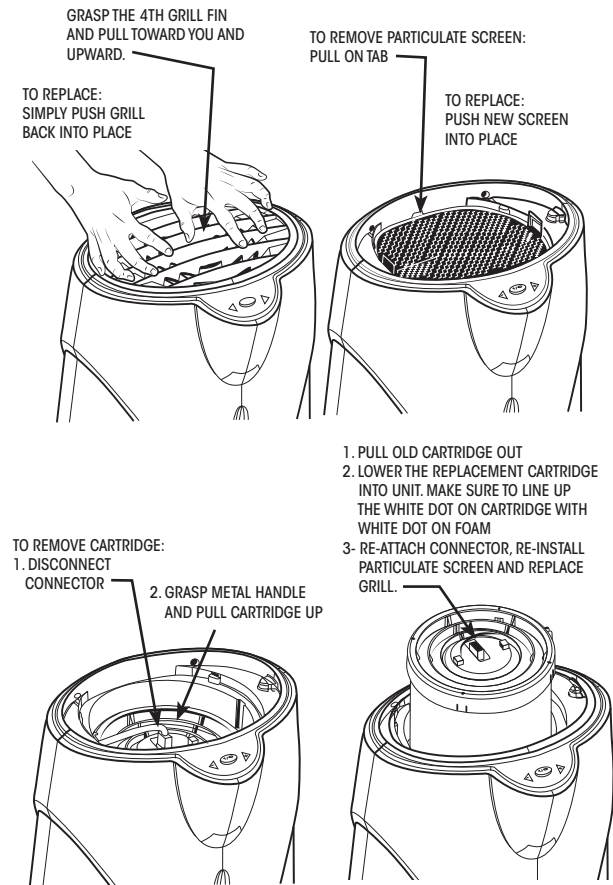
A tri-color LED indicates the effective life of the cartridge. The green light will change to amber with 10% of life left in the cartridge. The amber light will change to solid red and cartridge will need to be replaced.

### CHANGING THE PARTICULATE SCREEN

The particulate screen should be checked every 1-3 months. If there are heavy concentrations of contaminants in your indoor environment, such as pet dander or dust, you need to clean or change the screen periodically. To clean, use a mild detergent, followed by a thorough rinse with hot water, dry and replace. For particulate screen replacement see diagram in this pamphlet.

Replacement cartridges are available where RxAir®400 Air Purifiers are sold. Each replacement cartridge comes with four (4) particulate screens.

\*Please check state and local requirements regarding disposal of the UV Lamp.



**Hg LAMP CONTAINS MERCURY**  
Manage in Accord with Disposal Laws,  
See: [www.lamprecycle.org](http://www.lamprecycle.org) or 1-800-484-9704

## TROUBLESHOOTING

In the event you experience a problem with your air purifier, please check the following:

- Make sure the supply cord is correctly connected to the outlet.
- Make sure there is voltage to the outlet by using another electric device.
- Check the fuse or circuit breaker in your home electrical system.
- Be sure the top grill is properly in place to activate safety interlock switch.
- Check connector from cartridge to housing in the unit to make sure connection is secure. Press ON/OFF switch to ensure unit is switched on.
- Check indicator light on front of the unit to establish if cartridge replacement is necessary or if a problem is indicated. See **SAFETY FEATURES AND WARNINGS** section for a description of indicator lights.
- Unplug unit for one minute to allow the system to reset.
- Check the fuse in the cord.

If none of the above procedures restore operation, contact your distributor or RxAir®400 for repair or return instructions.

**DO NOT ATTEMPT TO REPAIR THE UNIT YOURSELF SINCE IT MAY CAUSE INJURY OR VOID THE LIMITED WARRANTY.**

LED Status	Duration	Failure Cause
Red LED Blinks (0.25s on and 0.25s off one time, pause time 2s)	1 minute	Fan failure
Red LED Blinks (0.25s on and 0.25s off two time, pause time 2s)	1 minute	Lamp or ballast failure
Red LED Blinks (0.25s on and 0.25s off three time, pause time 2s)	1 minute	Eeprom failure
Amber=10% Cartridge life		
Steady red = Replace Cartridge		

## SAFETY FEATURES AND WARNINGS

Your RxAir®400 Air Purifier incorporates a series of safety features for your protection:

- The unit will not operate if the cartridge is improperly installed or missing.
- The system automatically shuts off if: The top grill is removed. Any of the germicidal lamps should fail. The fan or ballast malfunctions.
- A steady **GREEN** light indicates normal operation.
- An **AMBER** light indicates that your cartridge has nearly reached the end of its effective life.
- A **STEADY RED** light will indicate when the cartridge should be changed.
- A **BLINKING RED** light indicates an electrical failure with the unit. Unplug unit. Review troubleshooting section for assistance. If still not functioning, seek service.
- Do not operate any fan with a damaged cord or plug. Discard fan or return to an authorized service facility for examination and/or repair.
- Do not run cord under carpeting. Do not cover cord with throw rugs, runners, or similar coverings. Do not route cord under furniture or appliances. Arrange cord away from area where it could be tripped over.
- Bring unit to room temperature before operation.

## CLEANING AND MAINTENANCE

Clean the outside of the unit with a soft, damp cloth.

Inlet grill may be carefully cleaned with a vacuum cleaner. To clean particulate screen, follow instructions under section titled "Changing Particulate Screen."

### IMPORTANT SAFETY INSTRUCTIONS

Read and save these safety instructions before using this air purifier.

This product employs overload protection (fuse). A blown fuse indicates an overload or short-circuit situation. If the fuse blows, unplug the product from the outlet. Replace the fuse as per the user servicing instructions (follow product marking for proper fuse rating) and check the product. If the replacement fuse blows, a short-circuit may be present and the product should be discarded or returned to an authorized service facility for examination and/or repair.

The RxAir®400 is designed for use on a flat and firm level surface. This air purifier should be placed at least eight (8) inches away from walls and heat sources such as, but not limited to radiators, stoves or heaters.

Always turn the RxAir®400 OFF and unplug from the wall outlet when not in operation or while the screen or cartridge is being changed. Unplugging for one minute allows the unit to reset.

Do not use this air purifier with a damaged cord or plug or if product malfunctions.

The RxAir®400 has a 3-prong plug. This plug will only fit one way into an outlet. If the plug does not fit fully into the outlet, contact a qualified electrician. **DO NOT** attempt to defeat or override this safety feature.

Do not tilt or move the RxAir®400 while it is in operation. Turn the unit OFF and unplug it before moving.

Do not immerse the RxAir®400 in water, expose to rain, use near water, or use in other damp locations.

Do not block air intakes or outlets.



## Owner's Manual

### RxAir®400 Air Purifier

READ AND SAVE THESE INSTRUCTIONS



RxAir®  
725 Southbridge Street  
Worcester, MA 01610  
(800) 484-9704  
www.RxAir.com