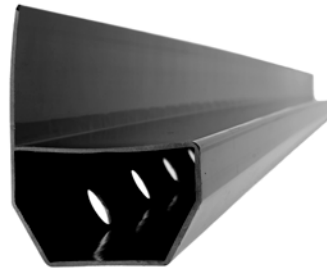


Triton Aquachannel

Drainage conduit for use with cavity drain membrane systems.



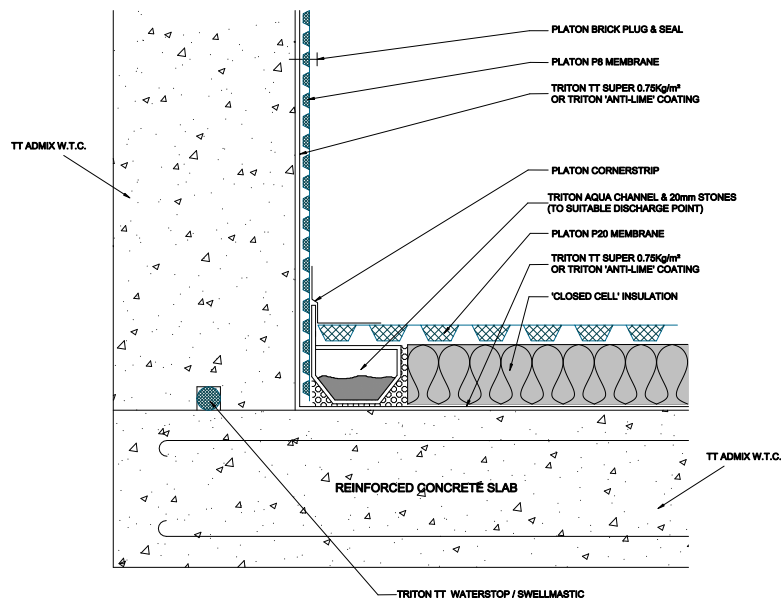
Description

Triton Aquachannel is used in conjunction with Platon cavity drain membranes to provide a reliable and maintainable drainage system as part of an internal waterproofing specification. **Triton Aquachannel** is usually located at the base of earth retaining basement or below ground walls, at the edge of the floor slab, to collect and manage away water which might come in from above, through the wall or via the potentially vulnerable wall to floor junction. **Triton Aquachannel** is moulded from PVC to make an enclosed conduit which allows water to move freely and which is maintainable over the long-term.

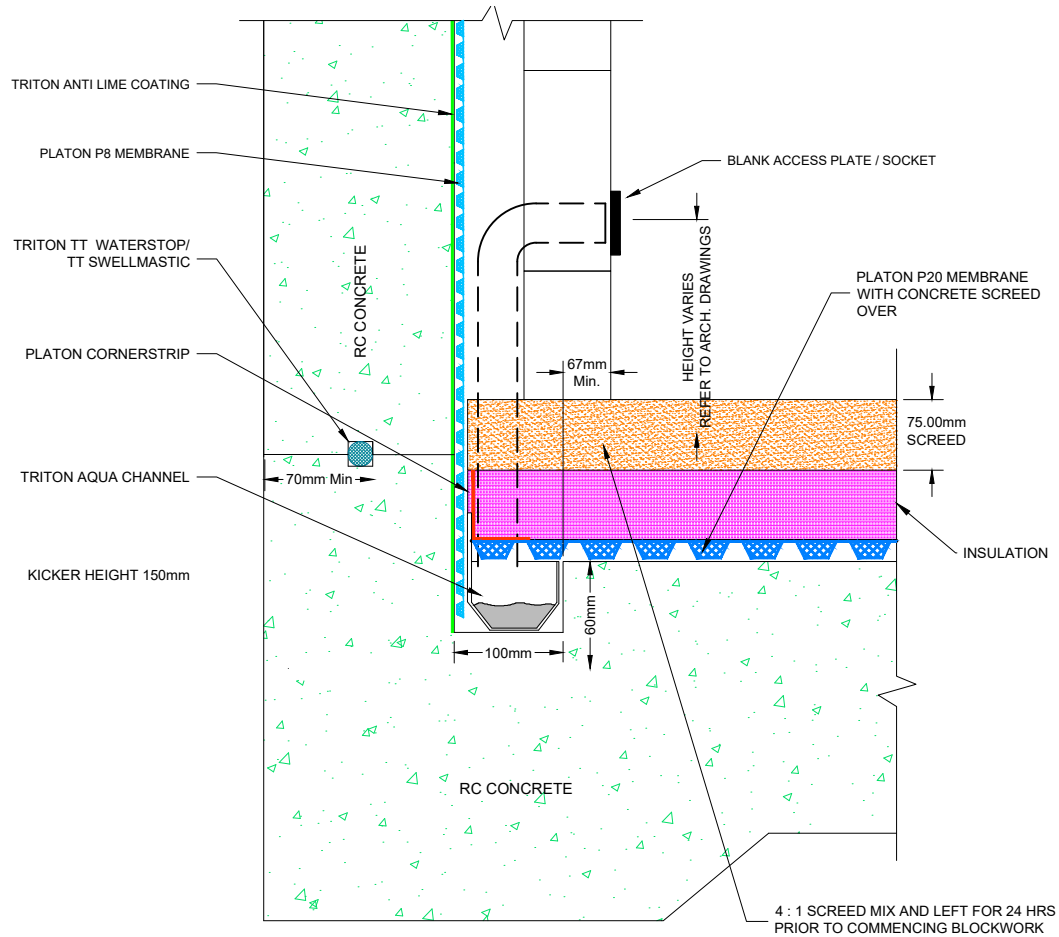
Triton Aquachannel is not a 'gutter' but provides a clear space for water to flow through, connecting directly to sump and pumps or via outlets running from Universal Channel Outlets/Drain Finials or End Outlets (110mm or 50mm). The water enters through 19mm holes in the angled rear face.

Usage

Triton Aquachannel can be used in new-build, conversion or renovation projects. **Triton Aquachannel** is usually placed within a pre-formed recess in the ground-bearing slab or on top of it in conjunction with a layer (50mm min) of sacrificial screed or XPS waterproof insulation. It can also be retained inside a bund - itself sealed with TT55/LPA waterproof slurry coating or TT Vapour Membrane.



TWS-066-1(D)



TWS-022-1(C)

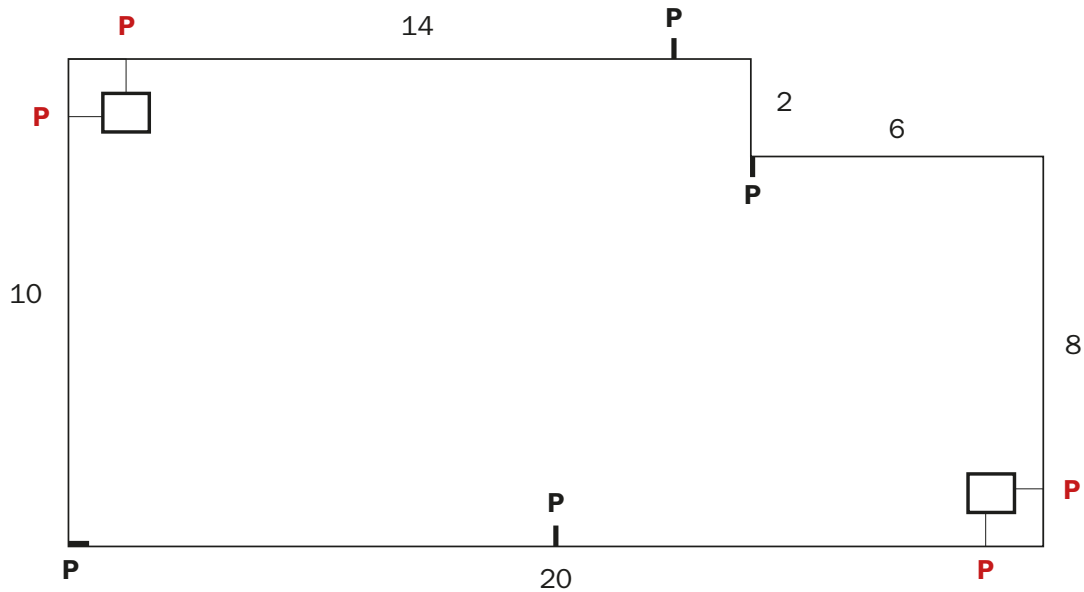
System Components

Aquachannel Conduit:	2m long with upstand – 80mm wide by 50mm high – 105mm to top of upstand. Also available with no upstand.
Aquachannel Corner:	A smooth 90° bend, fully swept, corner connector that ensures water flows easily and smoothly.
Aquachannel 'T':	An in-line connector piece that allows the main run of Aquachannel to connect at right angles to a secondary 'arm' of cross-floor Aquachannel.
Aquachannel In-line Inspection Port:	170mm long channel connector with a moulded opening which accepts 50mm solvent weld ABS waste pipe which can be configured with commonly available elbows, bends and end caps to custom form inspection ports.
Aquachannel Connector:	Quick and simple joining together of sections.
Aquachannel Drain Finial:	Connects to 110mm 'pop-up' pipework running directly to a sump
Aquachannel End Outlet:	Connects 50mm solvent weld ABS pipework to the end of an Aquachannel run.

Installation Requirements


Recess installation:	100mm wide x 60mm deep recess/rebate as a minimum, formed or excavated level, no fall required. Pack with 20mm clean gravel if the recess is larger eg if cut out from an existing floor.
On-slab installation:	50mm (min) depth of conventional screed or closed cell, waterproof XPS insulation (minimum compressive strength 300 kpa).
Outlets from aquachannel to sump:	Two minimum. Maximum linear run of Aquachannel for any one outlet: 25m. Maximum total linear run of Aquachannel for any one sump: 50m.
Distribution of inspection/access ports:	Maximum of 12m apart on straight runs. Also placed at corners to give best coverage, in conjunction with the other ports.

Example



Aquachannel Drain Finial* = **P**

Inspection Access Port = **P**

Sump = 

***Aquachannel drain finial also incorporates an inspection access port**

Before any Platon cavity membrane or Aquachannel is installed, all surfaces must be treated with Triton Anti-Lime Coating or Triton TT Super to control and minimise the movement and leaching out of 'free lime' from the substrate. Concrete which contains Triton TT Admix waterproofing additive does not need to be treated.

TECHNICAL SPECIFICATIONS	
Power Supply	
Rated Current	
Motor Rating	
Frequency	
Revolutions per Minute	
Max. Vertical Output	
Max. Horizontal Output	
Max. Flow Rate	
Max. Liquid Temperature	
Discharge Size	
Cable Length	
Height	
Colour	

SHOULD YOU REQUIRE ANY TECHNICAL ASSISTANCE PLEASE CONTACT OUR HELPDESK ON 01322 318830 OR EMAIL INFO@TRITONSYSTEMS.CO.UK

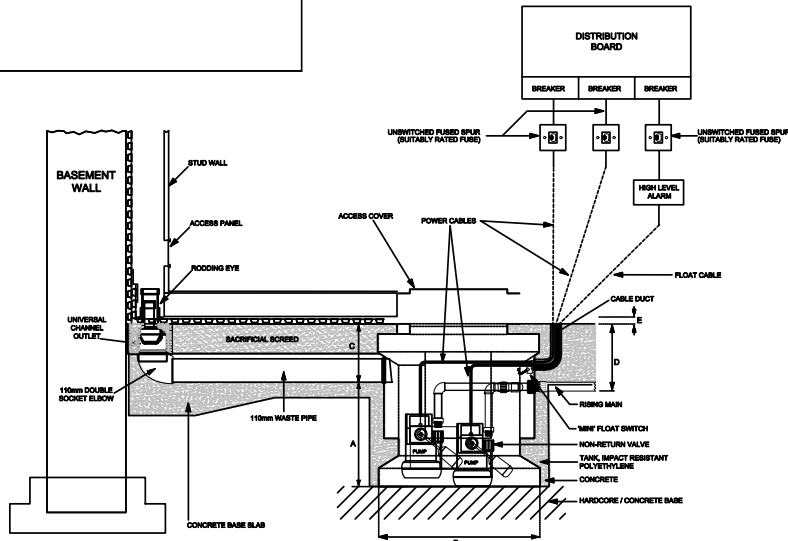
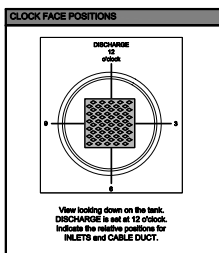
COMMENTS

AQUAPUMP – Technical Drawing

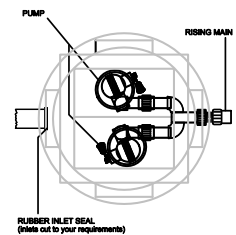
PROJECT DETAILS	
Site Location / Reference	
Bump Type	Pro <input type="checkbox"/> XL <input type="checkbox"/>
No. of Pumps	Single <input type="checkbox"/> Twin <input type="checkbox"/>
Dust Panel	Yes <input type="checkbox"/> No <input type="checkbox"/>
High Level Alarm	Yes <input type="checkbox"/> No <input type="checkbox"/>
Telematic	Yes <input type="checkbox"/> No <input type="checkbox"/>
BBUPS	Yes <input type="checkbox"/> No <input type="checkbox"/>
PowerSafe	Yes <input type="checkbox"/> No <input type="checkbox"/>
Vertical Head	
Horizontal Pipe Run	
No. of Bends	
Pipe Type / ID & OD Diameter	

ACCESS COVER (CLEAR OPENING)		
LENGTH (mm)	WIDTH (mm)	TYPE

FABRICATION SPECIFICATIONS			
ITEM INDEX	DEPTH (mm)	DIAMETER (mm)	CLOCK FACE POSITION
Tank depth A			
Tank diameter B			
Inlet C1			
Inlet C2			
Inlet C3			
Inlet C4			
Discharge D			12
Slab (inc. cover) E			
Cable Duct			

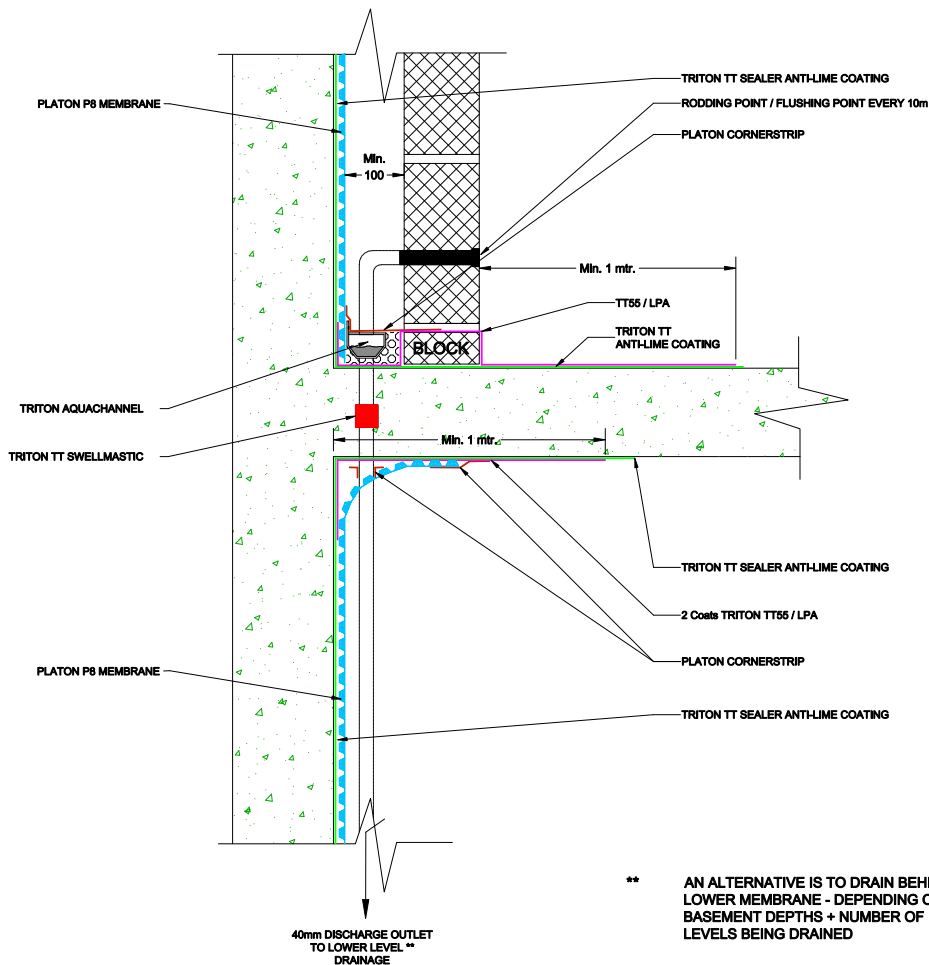


SIDE ELEVATIONS



PLAN VIEW

TWS-055-1(C)



** AN ALTERNATIVE IS TO DRAIN BEHIND LOWER MEMBRANE - DEPENDING ON BASEMENT DEPTHS + NUMBER OF LEVELS BEING DRAINED

TWS-031-1(C)

Triton Aquachannel is used in conjunction with Platon cavity drain membranes to create maintainable internal waterproofing systems (Type C, as described in BS 8102: 2009) which can be used in conjunction with other forms of waterproofing protection to produce combined or dual waterproofing systems. This might include, for example, Triton TT Admix in the reinforced concrete structure (Type B) or Triton TWS-EX100 sheet membrane (Type A).

These combined systems reduce the risk and consequences of failure, again as laid out in BS 8102: 2009 and are recognised by building warranty providers such as NHBC, Premier, LABC, etc. as being the minimum option.

Technical Assistance

Triton provide product specification services, on-site assistance and product training. Technical staff are CSSW qualified. Visit www.tritonsystems.co.uk to access a full range of data sheets, installation guides, typical drawing details and BBA certificates etc.

Related Products

- Platon cavity drain membranes: P8, P20, Plaster Mesh, Plaster Base etc.
- Aqua Pump Pro and XL Sumps and Pumps.
- Triton TT55 and Triton TT Vapour Membrane coatings.

Additional Data

- Platon Installation Manual.
- Aquachannel Accessories Data Sheet.

Triton Contact Details:

Triton Systems
Units 3 – 5 Crayford Commercial Centre, Greyhound Way, Crayford, Kent DA1 4HF

Tel: 01322 318 830
Fax: 01322 524 017
Email: info@tritonsystems.co.uk

www.tritonsystems.co.uk